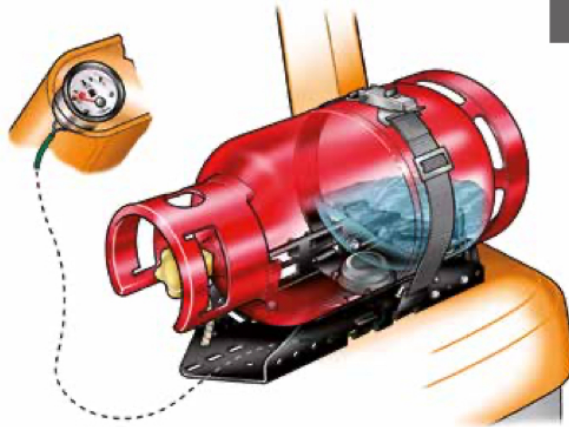


LPG SYSTEM PARTS



TANK ACCESSORIES

TANK ACCESSORIES



Sonatic® Kit
Reliable LPG level measuring

Recover the cost of the Sonatic® kit in less than a year!

Sonatic® Kit ensures a reliable fuel level measuring for your LPG-powered forklift, thanks to a unique ultrasonic technique. Its advantages are numerous:

Technical specifications:

- Accurate measuring, even when the lift truck is in motion
- Gauge is clearly visible for the driver
- Warning LED for minimum level, remaining running time when 'empty': 5 - 20 minutes
- Easily replace bottles by means of straps
- System is very easy to install

Advantages:

- Eliminate operational disruptions
- Optimization of cylinder replacement and fuel consumption
- Prevent carrying of heavy fuel cylinders to increase employee comfort and safety
- 1 year warranty on the product and its components



<p>A loss in working hours costs you: More than € 600 per year per lift truck</p>	<p>A loss of LPG costs you: More than € 500 per year per lift truck</p>
<p>Presumption: · 2 unplanned work interruptions per week · extra loss of time by unexpected gas bottle replacement: approx 10 min · labour cost lift truck driver: € 35 per hour*</p>	<p>Presumption: · 5% remaining volume · € 2 per kg · Consumption: 20 kg per day · 250 working days per year</p>
<p>* Average labour cost in EU</p>	

LPG SYSTEM PARTS



TANK ACCESSORIES

TANK ACCESSORIES



Suitable for commercial LPG cylinders:

- Material: steel and aluminium
- Diameter: from 295 mm to 320 mm
- Maximum weight: up to 40 kg
- Content: propane, butane and their mixtures

Fast and easy to install:

Install your sonatic kit s and st quick and easy. Sonatic kit B takes less than an hour to install and Sonatic Kits S and ST can be installed within 90 minutes.

The Sonatic® Kits can be installed during the routine maintenance by the service technician. All necessary parts are included in the delivery.

Spare part:

REF [165TA8176](#) - Sensor

Kit	Application	Dimensions	Weight	REF
Sonatic® Kit S	Standard	Kit S D300 (ø 295 - 310 mm)	approx 10 kg	125TA4540
		Kit S D310 (ø 307 - 320 mm)		125TA4541
Sonatic® Kit ST	For trucks with swiveling cabs/seats	Kit ST D300 (ø 295 - 310 mm)	approx 15 kg	125TA4542
		Kit ST D310 (ø 307 - 320 mm)		125TA4543
Sonatic® Kit B	In combination with existing bracket*	Kit B D300 (ø 300 - 310 mm)	approx 1 kg	125TA4544
		Kit B D310 (ø 307 - 320 mm)		125TA4545

* Bracket not included

Universally suitable for original equipment and retrofitting***

... as well for forklift trucks with swiveling cabs/seats

Only in combination with existing bracket as shown in picture



Sonatic® Kit S



Versions:

- **Sonatic® Kit S D300 (REF 125TA4540)**
Diameter of the bottle: 295 mm - 310 mm
Dimensions (L x W x H):
630 mm x 307 mm x 390 mm
- **Sonatic® Kit S D310 (REF 125TA4541)**
Diameter of the bottle: 307 mm - 320 mm
Dimensions (L x W x H):
630 mm x 327 mm x 410 mm

Contents

- Complete kit including
- Sonatic® FLT-sensor
 - Universal bracket
 - Fuel gauge
 - Wiring
 - Additional small parts for installation

Sonatic® Kit ST



Versions:

- **Sonatic® Kit ST D300 (REF 125TA4542)**
Diameter of the bottle: 295 mm - 310 mm
Dimensions (L x W x H):
630 mm x 307 mm x 417 mm
- **Sonatic® Kit ST D310 (REF 125TA4543)**
Diameter of the bottle: 307 mm - 320 mm
Dimensions (L x W x H):
630 mm x 327 mm x 437 mm

Contents

- Complete kit including
- Sonatic® Kit S
 - Base plate with tilt device

Sonatic® Kit B *



Versions:

- **Sonatic® Kit B D300 (REF 125TA4544)**
Diameter of the bottle: 300 mm - 310 mm
Dimensions (L x W x H):
280 mm x 143 mm x 10 mm
- **Sonatic® Kit B D310 (REF 125TA4545)**
Diameter of the bottle: 307 mm - 320 mm
Dimensions (L x W x H):
280 mm x 143 mm x 10 mm

Contents

- Complete kit including
- Sonatic® FLT-Sensor
 - Positioning plate
 - Fuel gauge
 - Wiring
 - Additional small parts for installation

LPG SYSTEM PARTS



TANK ACCESSORIES

TANK ACCESSORIES



Plastic case LPG
REF [127TA1036](#)



Aluminium case LPG
REF [107TA9326](#)

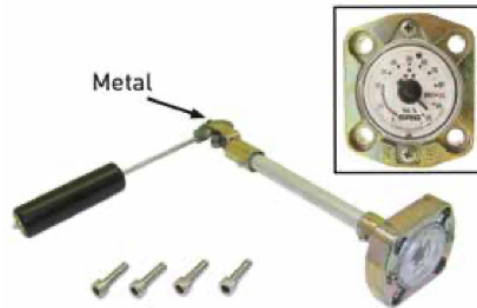


LPG fuel gauge
REF [107TA9319](#) - Degrees: 0°; for tank diameter: 300 mm
REF [107TA9318](#) - Degrees: 52°; for tank diameter: 300 mm
REF [107TA9322](#) - Degrees: 52°; for tank diameter: 320 mm
REF [105TA4831](#) - Degrees: 52°; for tank diameter: 360 mm
REF [107TA9320](#) - Degrees: 75°; for tank diameter: 300 mm
REF [107TA9317](#) - Degrees: 90°; for tank diameter: 270 mm
REF [107TA9321](#) - Degrees: 90°; for tank diameter: 300 mm

Seal REF [128TA4034](#)



REF [107TA9370](#) - Indicator



LPG fuel gauge (SRG)
REF [126TA6142](#) - Degrees: 52°; for tank diameter: 360 mm
REF [136TA3008](#) - Degrees: 90°; for tank diameter: 300 mm



Gauge
REF [126TA6144](#)



Gauge
REF [126TA6143](#)

LPG SYSTEM PARTS



TANK ACCESSORIES

TANK ACCESSORIES



Filler Bajonet 80%
For tanks 40 l, diameter: 300 mm, degrees: 0°
REF [107TA9389](#)



Filler ACME 80%
For tanks 40 l, diameter: 300 mm, degrees: 0°
REF [107TA9355](#)



Bajonet filler 80%
For tanks 36 l, diameter: 300 mm, degrees: 0°
REF [111TA6206](#)



Filler ACME 80%
For tanks 36 l, diameter: 300 mm, degrees: 0°
REF [111TA6207](#)



Bajonet filler - 3/8" NPT
REF [165TA8179](#)



EU filler, W21.8
REF [165TA8180](#)



EU filler, with O-ring for use on 3/8" filler
REF [165TA8181](#)



Bajonet adapter W21.8
REF [165TA8182](#)

LPG SYSTEM PARTS



TANK ACCESSORIES

TANK ACCESSORIES

Coupling REF [126TA6145](#)
Olive seal REF [126TA6146](#)



1/4" NPT
REF [107TA9340](#)



Adapter Total fitting to 1/4" NPT
REF [143TA7663](#)

Seal REF [136TA3176](#)



1/4" NPT Hansen female
REF [106TA2943](#)



1/4" NPT Hansen male
REF [106TA2940](#)



3/4" NPT x 1/2" JIC
REF [105TA4830](#)



1" NPT safety valve for tank 25 Bar
REF [107TA9342](#)



1/4" BSP
REF [144TA3705](#)



1/4" BSP Hansen male
REF [143TA7660](#)

LPG SYSTEM PARTS



TANK ACCESSORIES

TANK ACCESSORIES



Bajonet filler
REF [107TA9390](#)



Adapter Bajonet to fit on
ACME filler plug seal = REF 107TA9393
REF [107TA9388](#)



Adapter to fit ACME filler France / Italy
REF [111TA6209](#)



Electric valve for tanks 12 V
REF [111TA6210](#)



Dust cap for ACME filler
REF [107TA9356](#)



3-way valve 5/16" SAE
REF [143TA7661](#)



Dust cap for Bajonet filler
REF [136TA3014](#)



Safety relief valve 400 psi
REF [107TA9398](#)

LPG SYSTEM PARTS



TANK ACCESSORIES

TANK ACCESSORIES



Dust cap ACME filler
REF [143TA7662](#)



Side filler
REF [143TA7665](#)



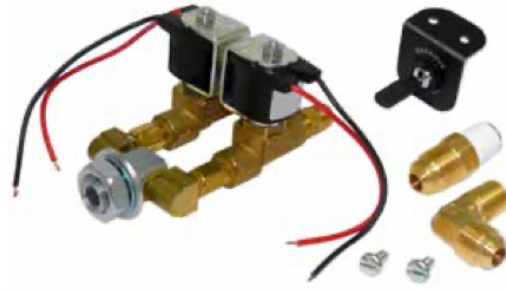
Valve
Used on Toyota
REF [143TA7664](#)



3-way valve
Used on Linde
REF [143TA7667](#)



3-way valve
Used on Linde
REF [143TA7666](#)



3-way valve electric
REF [143TA7711](#)



3-way valve
REF [107TA9391](#)