



**USED ON  
AMA**

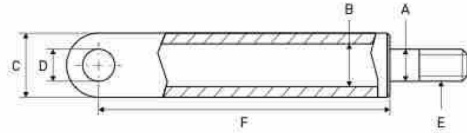
# USED ON AMA



CYLINDERS - VÉRINS/CYLINDRES - ZYLINDER

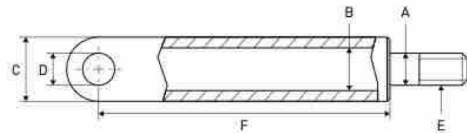
## LIFT CYLINDERS

VÉRINS DE LEVAGE - HUBZYLINDER



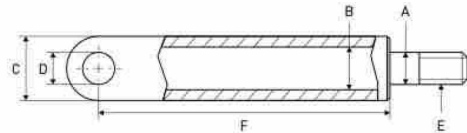
Old type

A mm	B mm	C mm	D mm	E mm	F mm	REF	
						Cylinder	Seal kit
40	70	85	35	M36 x 2	450	111TP1181	111TP1197
40	80	95	35	M36 x 2	450	111TP5391	111TP1199



New type

A mm	B mm	C mm	D mm	E mm	F mm	REF	
						Cylinder	Seal kit
40	70	85	35	M36 x 2	465	111TP1182	111TP1196



New type

A mm	B mm	C mm	D mm	E mm	F mm	REF	
						Cylinder	Seal kit
40	80	95	35	M36 x 2	460	111TP1183	111TP1198

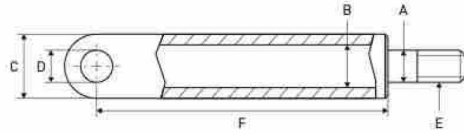
# USED ON AMA



## TILT CYLINDERS

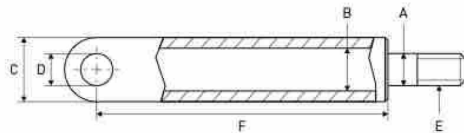
VÉRINS D'INCLINAISON - SCHLIESSZYLINDER

CYLINDERS - VÉRINS/CYLINDRES - ZYLINDER



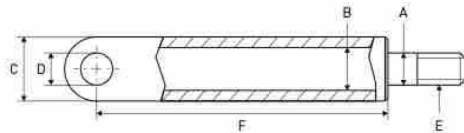
Old type

A mm	B mm	C mm	D mm	E mm	F mm	REF	
						Cylinder	Seal kit
40	70	85	35	M36 x 2	450	<a href="#">111TP1184</a>	<a href="#">111TP1197</a>



New type

A mm	B mm	C mm	D mm	E mm	F mm	REF	
						Cylinder	Seal kit
40	70	85	35	M36 x 2	460	<a href="#">111TP5389</a>	<a href="#">111TP1196</a>
40	80	95	35	M45 x 2	460	<a href="#">111TP5390</a>	<a href="#">111TP1198</a>



New type

A mm	B mm	C mm	D mm	E mm	F mm	REF	
						Cylinder	Seal kit
50	80	95	35	M45 x 2	460	<a href="#">111TP1185</a>	<a href="#">111TP1200</a>

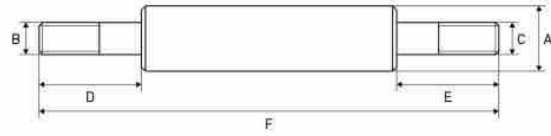
## USED ON AMA



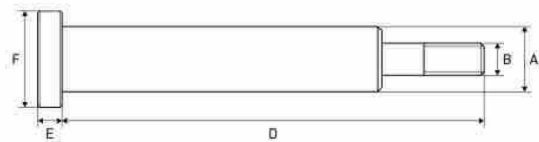
CYLINDER PARTS - PIÈCES DE CYLINDRE - ZYLINDER-ERSATZTEILE

## PISTON RODS

TIGES DE PISTON - KOLBENSTANGEN



A mm	B mm	C mm	D mm	E mm	F mm	Info	REF
40	M34	M36	28	88	485	SKM	111TP1186



A mm	B mm	D mm	E mm	F mm	Info	REF
40	M36	510	35	70	DKD	111TP6541



A mm	B mm	D mm	E mm	F mm	REF
40	M36	510	35	80	111TP1187



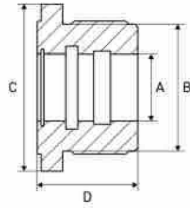
A mm	B mm	D mm	E mm	F mm	REF
40	M36	500	45	80	111TP1188
50	M45	500	45	80	111TP1189

## USED ON AMA



## CYLINDER HEADS

CULASSES - ZYLINDERKÖPFE



	A mm	B mm	C mm	D mm	REF
	40	70	90	50	<a href="#">111TP1190</a>
	40	73	85	48,5	<a href="#">111TP1192</a>
	40	80	100	50	<a href="#">111TP1191</a>
	40	82	93	48,5	<a href="#">111TP1193</a>

CYLINDER PARTS - PIÈCES DE CYLINDRE - ZYLINDER-ERSATZTEILE

# USED ON AMA



CYLINDER PARTS - PIÈCES DE CYLINDRE - ZYLINDER-ERSATZTEILE

## SEAL KITS

KITS DE JOINTS - DICHTUNGSSÄTZE



Diameter: 30/50 mm

**REF 111TP1194**



Diameter: 30/50 mm

**REF 111TP1195**



Diameter: 40/70 mm

**REF 111TP1196**



Diameter: 40/70 mm

**REF 111TP1197**



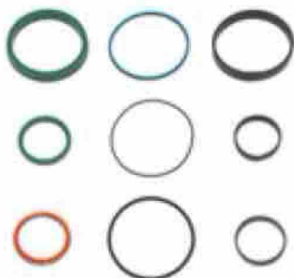
Diameter: 40/80 mm

**REF 111TP1198**



Diameter: 40/80 mm

**REF 111TP1199**



Diameter: 40/80 mm

**REF 111TP1206**



Diameter: 50/80 mm

**REF 111TP1200**

# USED ON AMA



## SEAL KITS

KITS DE JOINTS - DICHTUNGSSÄTZE



Diameter: 50/80 mm

**REF 111TP1201**



Diameter: 55/110 mm

**REF 111TP1202**



Diameter: 55/65 mm

**REF 111TP1203**



Diameter: 69,5/85 mm

**REF 111TP1204**



Diameter: 80/90 mm

**REF 111TP1205**

CYLINDER PARTS - PIÈCES DE CYLINDRE - ZYLINDER-ERSATZTEILE

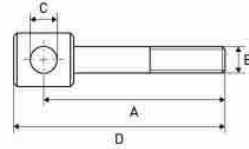
# USED ON AMA



CYLINDER PARTS – PIÈCES DE CYLINDRE – ZYLINDER-ERSATZTEILE

## ROD ENDS

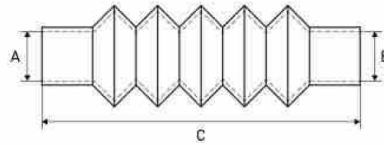
ROTULES – GELENKKÖPFE



A	B	C	D	REF
70	M36	35	100	<a href="#">111TP1207</a>
370	M36	35	400	<a href="#">111TP1208</a>

## DUST COVERS

CACHE-POUSSIÈRE – STAUBKAPPE



Diameter		Length	REF		
A	B	Min – C – max	Cover	Clamp 1	Clamp 2
55	80	115 – 270 – 500	<a href="#">111TP1209</a>	<a href="#">111TP4999</a>	<a href="#">111TP4918</a>



# USED ON AMA



## TANKS & OIL RESERVOIRS

RÉSERVOIRS (D'HUILE) - TANKS & ÖLBEHÄLTER



Length mm	Width mm	Height mm	REF
300	300	300	<b>111TP6641</b>

## SUCTION TUBES

TUBES D'ASPIRATION - SAUGROHRE



- Length: 33,5 mm
- Info: HE6000

**REF 111TP1210**

POWER PACKS & PARTS - GROUPE HYDRAULIQUE & ACCESSOIRES - AGGREGATE & ERSATZTEILE

# USED ON AMA



MOTORS, PUMPS & PARTS - MOTEURS, POMPES & ACCESSOIRES - MOTOREN, PUMPEN & ERSATZTEILE

## ELECTRIC MOTORS

MOTEURS ÉLECTRIQUES - ELEKTROMOTOREN



Voltage	kW	Rotation	REF
12	0,8	CW >>	<a href="#">111TP1211</a>
24	0,8	CW >>	<a href="#">111TP1212</a>



Voltage	kW	Rotation	REF
12	3,0	CW >>	<a href="#">111TP1213</a>
24	3,0	CW >>	<a href="#">111TP1216</a>



Voltage	kW	Rotation	REF
12	2,0	CW >>	<a href="#">111TP1214</a>
24	2,0	CW >>	<a href="#">111TP1215</a>



**HYDEM**

Voltage	kW	Rotation	REF
12	2,0	CW >>	<a href="#">111TP9100</a>
24	2,0	CW >>	<a href="#">111TP9094</a>

See chapter Universal parts on page 735 for more parts.

## HYDRAULIC PUMPS

POMPES HYDRAULIQUES - HYDRAULIKPUMPEN



CC	Rotation	REF
2,5	<< CCW	<a href="#">111TP1217</a>
3,3	<< CCW	<a href="#">111TP1218</a>



CC	Rotation	REF
3,2	<< CCW	<a href="#">111TP1219</a>



CC	Rotation	REF
0,8	<< CCW	<a href="#">111TP1220</a>

See chapter Universal parts on page 699 for more parts.

# USED ON AMA



## SOLENOID SWITCHES/CONTACTORS

SOLÉNOÏDES/CONTACTEURS - MAGNETSCHALTER/SCHÜTZE

	Amperage	REF	
		12 V	24 V
	100	<a href="#">111TP1221</a>	<a href="#">111TP1222</a>

See chapter Universal parts on page 701 for more parts.

## BRUSHES

BALAIS - KOHLEBÜRSTEN



- Voltage: 12/24 V
- Dimensions: 15,8 x 8,9 x 15,8 mm

REF [111TP1223](#)

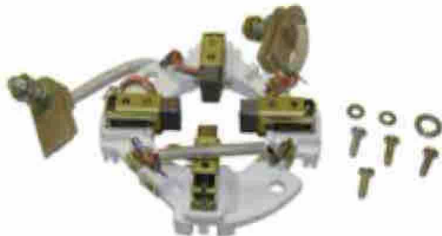


- Voltage: 12/24 V
- Dimensions: 24,8 x 9,9 x 22,9 mm

REF [111TP1224](#)

## BRUSH ROCKERS

COLLIERS PORTE-BALAIS - KOHLENHALTER



Diameter: 105 mm

REF [111TP1225](#)

## BEARINGS

ROULEMENTS - LAGER



Diameter mm	Height mm	REF
12/32	10	<a href="#">111TP1226</a>
17/35	10	<a href="#">111TP1227</a>

See chapter Universal parts on page 735 for more parts.

MOTORS, PUMPS & PARTS - MOTEURS, POMPES & ACCESSOIRES - MOTOREN, PUMPEN & ERSATZTEILE

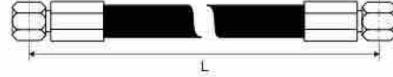
## USED ON AMA



HOSES &amp; FITTINGS - TUYAUX &amp; RACCORDS - SCHLÄUCHE &amp; KUPPLUNGEN

## HOSES

TUYAUX - SCHLÄUCHE



Hose diameter		Length mm	Fitting 1 mm	Fitting 2 mm	Info	REF
Inch	mm					
3/8	9,5	450	M18 x 1,5	M18 x 1,5	-40-100 °C	<a href="#">111TP1228</a>
3/8	9,5	650	M18 x 1,5	M18 x 1,5	-40-100 °C	<a href="#">111TP1229</a>
3/8	9,5	800	M18 x 1,5	M18 x 1,5	-40-100 °C	<a href="#">111TP1230</a>
3/8	9,5	1000	M18 x 1,5	M18 x 1,5	-40-100 °C	<a href="#">111TP1231</a>
3/8	9,5	1200	M18 x 1,5	M18 x 1,5	-40-100 °C	<a href="#">111TP1232</a>


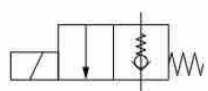

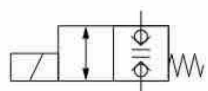


Hose diameter		Length mm	Fitting 1 mm	Fitting 2 mm	Info	REF
Inch	mm					
1/4	6,4	500	Ø 12 - 45°	Ø 12 - 45°	-40-100 °C	<a href="#">111TP1233</a>
1/4	6,4	925	M18 x 1,5	Ø 12	-40-100 °C	<a href="#">111TP1234</a>

## USED ON AMA



<b>SOLENOID VALVES</b> ÉLECTROVANNES - MAGNETVENTILE		Type	Voltage	Diameter mm	Thread mm	REF
		2/2	12	15	M20 x 1,5	<a href="#">111TP1235</a>
		2/2	24	15	M20 x 1,5	<a href="#">111TP1236</a>
		2/2	12	15	M20 x 1,5	<a href="#">111TP1237</a>
		2/2	24	15	M20 x 1,5	<a href="#">111TP1238</a>
		2/2	24	15	M20 x 1,5	<a href="#">111TP1239</a>

<b>CARTRIDGES</b> CARTOUCHES - PATRONEN		Type	Diameter mm	Thread mm	REF
		2/2	15	M20 x 1,5	<a href="#">111TP8462</a>
		2/2	15	M20 x 1,5	<a href="#">111TP8463</a>

COILS &amp; VALVES - BOBINES &amp; SOUPAPES - SPULEN &amp; VENTILE

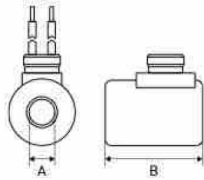
## USED ON AMA



COILS &amp; VALVES - BOBINES &amp; SOUPAPES - SPULEN &amp; VENTILE

## COILS

BOBINES - SPULEN



Voltage	A mm	B mm	Diameter mm	Thread mm	REF
12	18	40	15	M27 x 1	<b>111TP8551</b>
24	18	40	15	M27 x 1	<b>111TP8552</b>

## VALVE BLOCKS

BOÎTIERS À SOUPAPES - STEUERBLÖCKE



- Length: 205 mm
- Height: 49 mm
- Width: 70 mm
- Info: HE6000

**REF 111TP1240**

- Length: 205 mm
- Height: 49 mm
- Width: 70 mm
- Info: HE6000 - 15 l

**REF 111TP1241**

- Length: 205 mm
- Height: 50 mm
- Width: 70 mm
- Info: HE6000 - 20 l

**REF 111TP7143**

- Length: 80 mm
- Height: 50 mm
- Width: 70 mm
- Info: HS

**REF 111TP1242**

- Length: 75 mm
- Height: 30/35 mm
- Width: 65 mm
- Type: 3/2

**REF 111TP1243**

# USED ON AMA



## REGULATING VALVES

SOUPAPES DE RÉGULATION - REGELVENTILE



Length mm	Thread	Info	REF
30	3/8" BSP	15 l/min	<b>111TP1244</b>



Length mm	Thread	Info	REF
30	3/8" BSP	20 l/min	<b>111TP1245</b>

## VALVES & SWITCHES

SOUPAPES & INTERRUPTEURS - VENTILE & SCHALTER



Info: HE6000

**REF 111TP1246**

COILS & VALVES - BOBINES & SOUPAPES - SPULEN & VENTILE

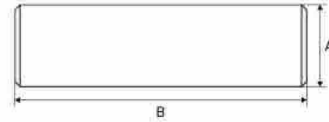
## USED ON AMA



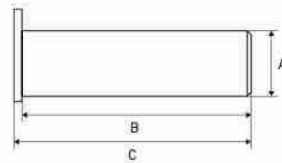
PINS, BUSHINGS &amp; ROLLERS - AXES, BAGUES &amp; GALETS - ACHSEN, BUCHSEN &amp; ROLLEN

## PINS

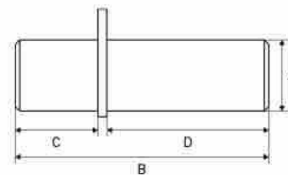
AXES - ACHSEN



A mm	B mm	REF
20	95	<a href="#">111TP1247</a>



A mm	B mm	C mm	Thread mm	REF
35	97	104		<a href="#">111TP5001</a>
35	98	103	M8 x 1	<a href="#">111TP5002</a>
35	108	113	M8 x 1	<a href="#">111TP1248</a>
35	118	123	M8 x 1	<a href="#">111TP1249</a>
35	128	133	M8 x 1	<a href="#">111TP1250</a>
35	157	165	M10 x 1,5	<a href="#">111TP5000</a>
35	250	260	M10 x 1,5	<a href="#">111TP1252</a>
40	115	120	M8 x 1	<a href="#">111TP1253</a>



A mm	B mm	C mm	D mm	Thread mm	REF
35	170	70	95	M10 x 1	<a href="#">111TP7553</a>
35	185	68	112	M10 x 1	<a href="#">111TP1251</a>

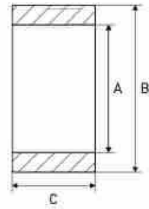


# USED ON AMA



## PLATFORM ROLLERS

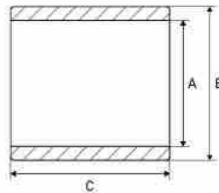
GALETS DE HAYON - PLATTFORMROLLEN



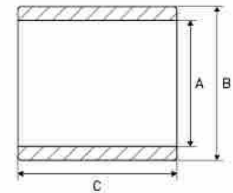
A mm	B mm	C mm	REF
35	90	40	<a href="#">111TP1254</a>

## BUSHINGS

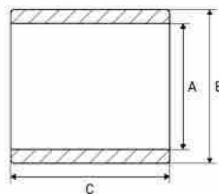
BAGUES - BUCHSEN



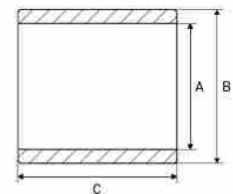
A mm	B mm	C mm	REF
30	36	30	<a href="#">111TP1255</a>
35	42	35	<a href="#">111TP1256</a>
35	42	58	<a href="#">111TP1257</a>



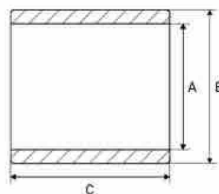
A mm	B mm	C mm	REF
40	50	70	<a href="#">111TP1258</a>



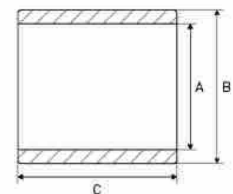
A mm	B mm	C mm	REF
30	36	60	<a href="#">111TP1259</a>



A mm	B mm	C mm	Info	REF
12	14	15	DC	<a href="#">111TP1260</a>



A mm	B mm	C mm	REF
35	42	35	<a href="#">111TP4501</a>



A mm	B mm	C mm	REF
35	42	58	<a href="#">111TP8046</a>

See chapter Universal parts on page 705 for more parts.

PINS, BUSHINGS & ROLLERS - AXES, BAGUES & GALETS - ACHSEN, BUCHSEN & ROLLEN

## USED ON AMA



MECHANICAL PARTS – PIÈCES MÉCANIQUES – MECHANISCHE ERSTATZTEILE

## SPRINGS &amp; GAS SPRINGS

RESSORTS &amp; VÉRINS À GAZ – FEDERN &amp; GASDRUCKFEDERN



Diameter mm	Length mm	Width mm	REF
8	245	38	111TP1317



Diameter mm	Length mm	Width mm	REF
4	85	85	111TP6581



Diameter mm	Length mm	REF
10	1225	111TP1318

See chapter Universal parts on page 707 for more parts.

# USED ON AMA



## PLATFORM PARTS

PIÈCES DE PLATEFORME - PLATTFORMERSATZTEILE



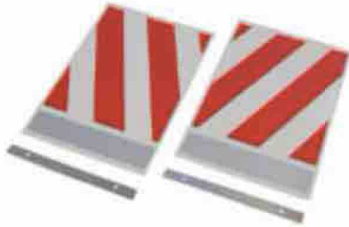
- Length: 400 mm
- Width: 250 mm
- § 53b Abs. 5 StVZO
- TÜV/CE with certificate

**REF 111TP1319**



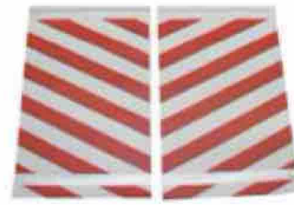
- Length: 400 mm
- Width: 250 mm
- § 53b Abs. 5 StVZO
- TÜV/CE without certificate

**REF 111TP1320**



- Length: 300 mm
- Width: 200 mm

**REF 111TP2930**



- Length: 370 mm
- Width: 240 mm

**REF 111TP1321**



- Length: 355 mm
- Height: 45 mm
- Width: 50 mm
- LH

**REF 111TP8045**



- Length: 355 mm
- Height: 45 mm
- Width: 50 mm
- RH

**REF 111TP8044**



Diameter: 12 x 45 mm

**REF 111TP1322**

See chapter Universal parts on page 708 for more parts.

MECHANICAL PARTS - PIÈCES MÉCANIQUES - MECHANISCHE ERSTATZTEILE

# USED ON AMA



SWITCHES & CONTROLLERS – INTERRUPTEURS & COMMANDES – SCHALTER & BEDIENUNGEN

## JOYSTICKS

LEVIERS DE COMMANDE – JOYSTICKS



- 4 position
- 4 x 2NO

**REF 111TP1323**

## ROTARY/PUSH SWITCHES & PARTS

INTERRUPTEURS ROTATIFS/POUSOIRS & ACCESSOIRES – DREH-/DRUCKSCHALTER & ERSATZTEILE



**REF 111TP1324** – Black  
**REF 111TP1325** – Green  
**REF 111TP1326** – Red



1999–2002

**REF 111TP1327**



3 positions

**REF 111TP1328**

## CONTACT ELEMENTS

BLOCS DE CONTACT – KONTAKTELEMENTE



1 x NO

**REF 111TP1330**



1 x NC

**REF 111TP1331**

# USED ON AMA



## BATTERY/EMERGENCY SWITCHES & PARTS

COUPE BATTERIE/INTERRUPTEURS D'ARRÊT D'URGENCE & ACCESSOIRES - BATTERIE-/NOTSTOPPSCHALTER & ERSATZTEILE



- Amperage: 150/1000 A
- 5 sec

REF [111TP1332](#)



- Diameter: 40 mm
- Length: 35 mm
- Width: 30 mm

REF [111TP1340](#)

## CONTROLLERS

COMMANDES - BEDIENUNGEN



Operate your tail lift with our high-quality hand controls available in 2- or 3-button configurations.

**Your benefits:**

- Maximum comfort, high productivity
- Unique ergonomic design
- Easy push system
- With magnet and ring for easy handling
- Rubber shock absorber
- Usable in cold and wet environments

**Specifications:**

- Protection (IP): IP44 according to EN 60 529
- Contact type: Mafelec (push button)
- Max amperage: 10 A
- Operating temperature: -25 °C up to 60 °C
- Material: ABS plastic with rubber buffer
- Cable: polyurethane 3,5 metres working length

**Applications:**

Tail lifts, winches, cranes to name a few

**Available colours:**

Orange, yellow, green, red and blue

**Available in different colours and in 2- or 3-button configurations. Ask for your quantity discount. All models are equipped with Mafelec switches.**

**2-button hand controls with cable and connector**

Make	Colour	REF
AMA	Green	<a href="#">111TP5188</a>

**3-button hand controls with cable and connector**

Make	Colour	REF
AMA	Green	<a href="#">111TP5200</a>

**2-button hand controls without cable**

Colour	REF
Orange	<a href="#">111TP5214</a>
Blue	<a href="#">111TP5215</a>
Red	<a href="#">111TP5216</a>
Yellow	<a href="#">111TP5217</a>
Green	<a href="#">111TP5218</a>

**3-button hand controls without cable**

Colour	REF
Orange	<a href="#">111TP5219</a>
Blue	<a href="#">111TP5220</a>
Yellow	<a href="#">111TP5221</a>
Red	<a href="#">111TP5222</a>
Green	<a href="#">111TP5223</a>

SWITCHES & CONTROLLERS - INTERRUPTEURS & COMMANDES - SCHALTER & BEDIENUNGEN

# USED ON AMA



SWITCHES & CONTROLLERS – INTERRUPTEURS & COMMANDES – SCHALTER & BEDIENUNGEN

## CONTROLLERS

COANDES - BEDIENUNGEN



- 2 x NO
- Mafelec switch

**REF 111TP8042**



- 1 x NO + 1 x NC
- Mafelec switch

**REF 111TP8043**

See chapter Universal parts on page 712 for more parts.

## FOOT CONTROLLERS & PARTS

COANDES AU PIED & ACCESSOIRES - FUSSSCHALTER & ERSATZTEILE



Length: 2000 mm

**REF 111TP1329**

# USED ON AMA



## KOSTAL CABLES

CÂBLES KOSTAL - KOSTALKABEL



- Length: 4000 mm
- Thread: M24 x 1 mm/M27 x 1 mm

**REF 111TP1336**

CABLES & CONNECTORS - CÂBLES & CONNECTEURS - KABEL & STECKER

# USED ON AMA



ELECTRICAL PARTS - PIÈCES ÉLECTRIQUES - ELEKTRISCHE ERSATZTEILE

## RELAYS

RELAIS - RELAIS



Voltage	Wattage	REF
24	10/110	<b>111TP1337</b>



Voltage	Wattage	REF
24	10/110	<b>111TP9512</b>

See chapter Universal parts on page 727 for more parts.

## FUSE HOLDERS & PARTS

PORTE-FUSIBLES & ACCESSOIRES - SICHERUNGSHALTER & ERSATZTEILE



DIN 72581/med  
**REF 111TP1338**



DIN 72581/med  
**REF 111TP8755**

See chapter Universal parts on page 732 for more parts.