



**USED ON**  
**ANTEO**

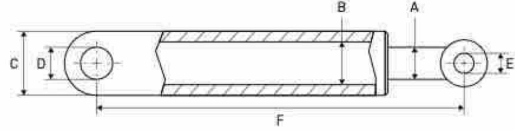
# USED ON ANTEO



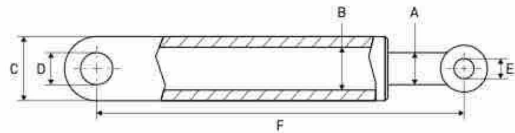
CYLINDERS - VÉRINS/CYLINDRES - ZYLINDER

## LIFT CYLINDERS

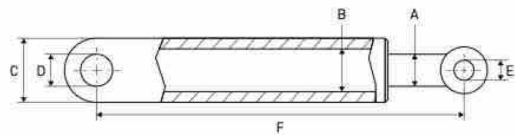
VÉRINS DE LEVAGE - HUBZYLINDER



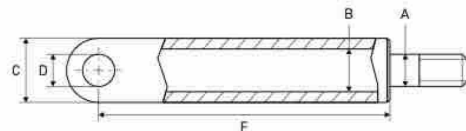
A mm	B mm	C mm	D mm	E mm	F mm	Info	REF	
							Cylinder	Seal kit
35	60	70	30	30	631	Futura	<a href="#">111TP1347</a>	<a href="#">111TP9351</a>



A mm	B mm	C mm	D mm	E mm	F mm	Info	REF	
							Cylinder	Seal kit
35	60	70	30	30	538	Business	<a href="#">111TP1348</a>	<a href="#">111TP9351</a>



A mm	B mm	C mm	D mm	E mm	F mm	Info	REF	
							Cylinder	Seal kit
40	70	80	30	30	548	Left - F3	<a href="#">111TP1349</a>	<a href="#">111TP1354</a>
40	70	80	30	30	548	Right - F3	<a href="#">111TP1350</a>	<a href="#">111TP1354</a>
40	60	70	30	30	590	Left	<a href="#">111TP9884</a>	<a href="#">111TP1358</a>
40	60	70	30	30	590	Right	<a href="#">111TP9883</a>	<a href="#">111TP1358</a>



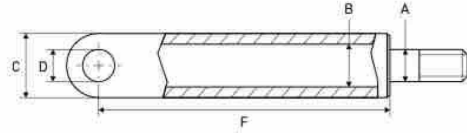
A mm	B mm	C mm	D mm	E mm	F mm	Info	REF	
							Cylinder	Seal kit
50	90	102	30	30	549	REP	<a href="#">111TP1351</a>	<a href="#">111TP9352</a>

# USED ON ANTEO

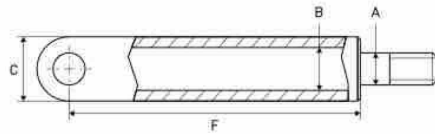


## TILT CYLINDERS

VÉRIN D'INCLINAISON - SCHLIESSZYLINDER



A mm	B mm	C mm	D mm	E mm	F mm	Info	REF	
							Cylinder	Seal kit
40	80	90	30	M38 x 1,5	395	Left - F3	<a href="#">111TP8083</a>	<a href="#">111TP1355</a>
40	80	90	30	M38 x 1,5	395	Right - F3	<a href="#">111TP8084</a>	<a href="#">111TP1355</a>



A mm	B mm	C mm	E mm	F mm	REF	
					Cylinder	Seal kit
35	70	80	M30 x 1,5	550	<a href="#">112TP9925</a>	<a href="#">111TP1355</a>
50	80	90		740	<a href="#">112TP9926</a>	<a href="#">111TP1355</a>

CYLINDERS - VÉRINS/CYLINDRES - ZYLINDER

## USED ON ANTEO



CYLINDER PARTS - PIÈCES DE CYLINDRE - ZYLINDER-ERSATZTEILE

## SEAL KITS

KITS DE JOINTS - DICHTUNGSSÄTZE



- Diameter: 30/55 mm
- Info: F3CL 10

REF 111TP1352



- Diameter: 30/60 mm
- Info: F3CL 10

REF 111TP1356



- Diameter: 30/80 mm
- Info: F3CL 15H / F3CL 15HS / F3CL 20 HS

REF 111TP1353



- Diameter: 35/70 mm
- Info: F3M 075

REF 111TP1357



- Diameter: 40/60 mm
- Info: F3CL 15HS / F3CL 15H

REF 111TP1354



- Diameter: 40/70 mm
- Info: F3CL 20H

REF 111TP1358



- Diameter: 40/80 mm
- Info: F3CL 20H

REF 111TP1355



- Diameter: 45/70 mm
- Info: RCE 20HS

REF 111TP1359



- Diameter: 50/90 mm
- Info: CE 15REP

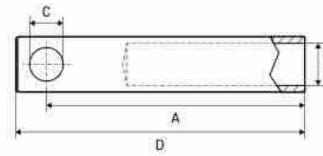
REF 112TP8189

# USED ON ANTEO



## EXTENSIONS

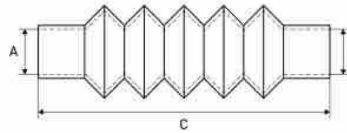
RALLONGES - VERLÄNGERUNG



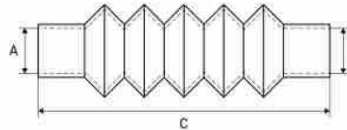
A mm	B mm	C mm	D mm	Info	REF
220	M38	30	245	F3 CHL	<a href="#">111TP1361</a>
370	M38	30	396	H/S	<a href="#">111TP1360</a>

## DUST COVERS

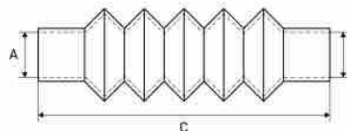
CACHE-POUSSIÈRE - STAUBKAPPE



Diameter		Length		REF		
A mm	B mm	Min - C - max mm	Cover	Clamp 1	Clamp 2	
40	60	70 - 185 - 290	<a href="#">111TP1362</a>	<a href="#">111TP5003</a>	<a href="#">111TP5004</a>	



Diameter		Length		REF		
A mm	B mm	Min - C - max mm	Cover	Clamp 1	Clamp 2	
60	100	75 - 215 - 320	<a href="#">111TP1363</a>	<a href="#">111TP4999</a>	<a href="#">111TP5005</a>	



Diameter		Length		REF		
A mm	B mm	Min - C - max mm	Cover	Clamp 1	Clamp 2	
50	90	70 - 210 - 300	<a href="#">111TP1364</a>	<a href="#">111TP5004</a>	<a href="#">111TP4918</a>	

CYLINDER PARTS - PIÈCES DE CYLINDRE - ZYLINDER-ERSATZTEILE

## USED ON ANTEO



SEALS &amp; RINGS - JOINTS &amp; RONDELLES - DICHTUNGEN &amp; RINGE

## SEALS

JOINTS - DICHTUNGEN



Diameter	Dimensions mm	REF
M18	18,7 x 26 x 1,5	<a href="#">111TP1365</a>

# USED ON ANTEO



## COVERS

COUVERCLES - ABDECKUNGEN



Length mm	Height mm	Width mm	REF
390	280	325	<a href="#">111TP8048</a>



Length mm	Height mm	Width mm	REF
325	305	165	<a href="#">111TP8049</a>



Length mm	Height mm	Width mm	REF
280	345	285	<a href="#">112TP9928</a>



Length mm	Height mm	Width mm	REF
285	285	225	<a href="#">112TP9929</a>



Length mm	Height mm	Width mm	REF
255	490	230	<a href="#">112TP9927</a>

POWER PACKS & PARTS - GROUPE HYDRAULIQUE & ACCESSOIRES - AGGREGATE & ERSATZTEILE

## USED ON ANTEO

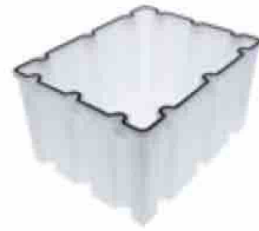


## TANKS &amp; OIL RESERVOIRS

RÉSERVOIRS (D'HUILE) - TANKS &amp; ÖLBEHÄLTER



Length mm	Height mm	Width mm	Volume l	REF
295	150/375	235	6	<a href="#">111TP1366</a>



Length mm	Height mm	Width mm	Volume l	REF
265	160	210	4	<a href="#">111TP8085</a>



HYDEM

Reservoir inox for F3CL and F3RE

Length mm	Height mm	Width mm	Volume l	REF
315	300	270	8	<a href="#">112TP9930</a>

## FILTERS &amp; BREATHERS

FILTRES &amp; RENIFLARDS - FILTER &amp; ENTLÜFTER



Info: F3

REF [111TP8050](#)



# USED ON ANTEO



## LOCKS

SERRURES - VERRIEGELUNGEN



Length: 130 mm

**REF [111TP8051](#)**



Length: 95 mm

**REF [111TP8052](#)**



Length: 160 mm

**REF [112TP5184](#)**



- Rubber hook
- Length: 140 mm

**REF [112TP5123](#)**

POWER PACKS & PARTS - GROUPE HYDRAULIQUE & ACCESSOIRES - AGGREGATE & ERSATZTEILE

## USED ON ANTEO



MOTORS, PUMPS &amp; PARTS - MOTEURS, POMPES &amp; ACCESSOIRES - MOTOREN, PUMPEN &amp; ERSATZTEILE

## ELECTRIC MOTORS

MOTEURS ÉLECTRIQUES - ELEKTROMOTOREN



Voltage	kW	Rotation	REF
12	2	CW >>	<a href="#">111TP1367</a>
24	2	CW >>	<a href="#">111TP1368</a>



Voltage	kW	Rotation	REF
12	2	CW >>	<a href="#">111TP1371</a>
24	2	CW >>	<a href="#">111TP1372</a>



Voltage	kW	Rotation	REF
12	1,5	CW >>	<a href="#">111TP1369</a>
24	2	CW >>	<a href="#">111TP1370</a>

See chapter Universal parts on page 735 for more parts.

# USED ON ANTEO



## HYDRAULIC PUMPS

POMPES HYDRAULIQUES - HYDRAULIKPUMPEN



CC	Rotation	REF
1,1	<< CCW	<a href="#">111TP1373</a>
1,6	<< CCW	<a href="#">111TP1374</a>
2,6	<< CCW	<a href="#">111TP1375</a>



CC	Rotation	REF
1,1	<< CCW	<a href="#">111TP9885</a>
1,6	<< CCW	<a href="#">111TP9886</a>
2,6	<< CCW	<a href="#">111TP9887</a>



CC	Rotation	REF
1,0	<< CCW	<a href="#">111TP8053</a>
1,1	<< CCW	<a href="#">111TP8054</a>



CC	Rotation	REF
1,6	<< CCW	<a href="#">111TP2061</a>



CC	Rotation	REF
250	CW >>	<a href="#">112TP9909</a>

See chapter Universal parts on page 699 for more parts.

MOTORS, PUMPS & PARTS - MOTEURS, POMPES & ACCESSOIRES - MOTOREN, PUMPEN & ERSATZTEILE


# USED ON ANTEO



MOTORS, PUMPS & PARTS - MOTEURS, POMPES & ACCESSOIRES - MOTOREN, PUMPEN & ERSATZTEILE

## SOLENOID SWITCHES/CONTACTORS

SOLÉNOÏDES/CONTACTEURS - MAGNETSCHALTER/SCHÜTZE

	Amperage	REF	
		12 V	24 V
	80	<a href="#">111TP1377</a>	<a href="#">111TP1378</a>
	100	<a href="#">111TP1379</a>	<a href="#">111TP1380</a>
	80	<a href="#">111TP8055</a>	<a href="#">111TP8335</a>
	150	<a href="#">111TP1381</a>	<a href="#">111TP1382</a>

See chapter Universal parts on page 701 for more parts.

## COUPLERS

COUPLEURS - KUPPLUNGEN



Diameter mm	Height mm	REF
18	22	<a href="#">111TP1383</a>



Diameter mm	Height mm	REF
18	41	<a href="#">111TP1384</a>



Diameter mm	Height mm	REF
22	12	<a href="#">111TP1385</a>

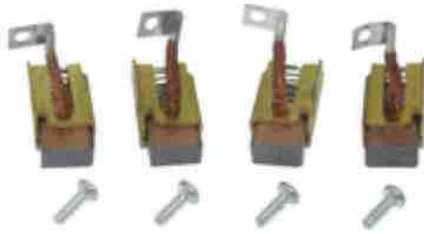
See chapter Universal parts on page 702 for more parts.

# USED ON ANTEO



## BRUSHES

BALAIS - KOHLEBÜRSTEN



- Voltage: 24 V
- Hole: 15,8 x 8,9 x 15,8 mm

REF **111TP1386**

## BRUSH ROCKERS

COLLIERS PORTE-BALAIS - KOHLENHALTER



Diameter: 105 mm

REF **111TP1225**

## BEARINGS

ROULEMENTS - LAGER



Diameter mm	Height mm	REF
12/16	10	<b>111TP1387</b>



Diameter mm	Height mm	REF
12/32	10	<b>111TP1226</b>



Diameter mm	Height mm	REF
20/42	12	<b>111TP1388</b>

See chapter Universal parts on page 735 for more parts.

MOTORS, PUMPS & PARTS - MOTEURS, POMPES & ACCESSOIRES - MOTOREN, PUMPEN & ERSATZTEILE

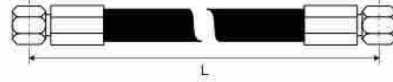
## USED ON ANTEO



HOSES &amp; FITTINGS - TUYAUX &amp; RACCORDS - SCHLÄUCHE &amp; KUPPLUNGEN

## HOSES

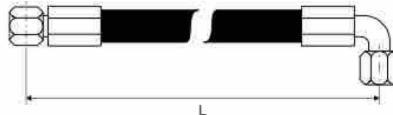
TUYAUX - SCHLÄUCHE



Hose diameter		Length mm	Fitting 1 Inch	Fitting 2 Inch	Info	REF
inch	mm					
1/4	6,4	320	9/16	9/16	-40-100 °C	<a href="#">111TP9889</a>
1/4	6,4	1120	9/16	9/16	-40-100 °C	<a href="#">111TP1389</a>
1/4	6,4	1220	9/16	9/16	-40-100 °C	<a href="#">111TP1390</a>



Hose diameter		Length mm	Fitting 1 Inch	Fitting 2 Inch	Info	REF
inch	mm					
1/4	6,4	980	9/16	9/16	-40-100 °C	<a href="#">111TP1391</a>



Hose diameter		Length mm	Fitting 1 Inch	Fitting 2 Inch	Info	REF
inch	mm					
1/4	6,4	465	9/16	9/16	-40-100 °C	<a href="#">111TP1392</a>
1/4	6,4	560	9/16	9/16	-40-100 °C	<a href="#">111TP1393</a>
1/4	6,4	800	9/16	9/16	-40-100 °C	<a href="#">111TP1394</a>
1/4	6,4	870	9/16	9/16	-40-100 °C	<a href="#">111TP1395</a>
1/4	6,4	920	9/16	9/16	-40-100 °C	<a href="#">111TP1396</a>
1/4	6,4	1250	9/16	9/16	-40-100 °C	<a href="#">111TP1397</a>
1/4	6,4	2000	9/16	9/16	-40-100 °C	<a href="#">111TP1398</a>
3/8	9,5	350	9/16	9/16	-40-100 °C	<a href="#">111TP1399</a>
3/8	9,5	370	9/16	9/16	-40-100 °C	<a href="#">111TP1400</a>
3/8	9,5	465	9/16	9/16	-40-100 °C	<a href="#">111TP1401</a>
3/8	9,5	490	9/16	9/16	-40-100 °C	<a href="#">111TP1402</a>
3/8	9,5	520	9/16	9/16	-40-100 °C	<a href="#">111TP1403</a>
3/8	9,5	615	9/16	9/16	-40-100 °C	<a href="#">111TP1404</a>
3/8	9,5	670	9/16	9/16	-40-100 °C	<a href="#">111TP1405</a>
3/8	9,5	5000	9/16	9/16	-40-100 °C	<a href="#">111TP1406</a>

# USED ON ANTEO



## HOSES

TUYAUX - SCHLÄUCHE



Hose diameter		Length mm	Fitting 1 Inch	Fitting 2 Inch	Info	REF
inch	mm					
1/4	6,4	2000	9/16	9/16	-40-100 °C	<a href="#">111TP1407</a>
3/8	9,5	2700	9/16	9/16	-40-100 °C	<a href="#">111TP1408</a>

## FITTINGS

RACCORDS - KUPPLUNGEN



Thread: male 1/4" BSP - female  
9/16" JIC

REF [111TP9890](#)



Thread: 2 x male 9/16" JIC

REF [111TP9891](#)



- For flexible retour diameter:  
6 mm
- Thread: BJO 1/8"


REF [112TP9946](#)

HOSES & FITTINGS - TUYAUX & RACCORDS - SCHLÄUCHE & KUPPLUNGEN

# USED ON ANTEO



COILS & VALVES - BOBINES & SOUPAPES - SPULEN & VENTILE

<b>SOLENOID VALVES</b> ÉLECTROVANNES - MAGNETVENTILE		Type	Voltage	Diameter nose mm	Diameter core mm	Thread Inch	REF
		3/2	12	15,8-17,4		7/8 UNF	<a href="#">111TP1409</a>
		3/2	24	15,8-17,4		7/8 UNF	<a href="#">111TP1410</a>
		2/2	24	13-15	13 Kostal: M27	3/4-16 UNF	<a href="#">111TP9892</a>
		2/2	24	12,7	13 DIN	3/4-16 UNF	<a href="#">111TP9893</a>
		2/2	24	13		3/4-16 UNF	<a href="#">111TP9894</a>
		2/2	24	13	13 Kostal: M27	3/4-16 UNF	<a href="#">111TP9895</a>
		2/2	24	12,7	13 Kostal: M27	3/4-16 UNF	<a href="#">111TP9896</a>
		2/2	12	13	13 Kostal: M27	3/4-16 UNF	<a href="#">111TP9897</a>
		2/2	24	12,7		3/4-16 UNF	<a href="#">111TP9898</a>
		4/2	24	12,7		3/4-16 UNF	<a href="#">112TP9931</a>



## USED ON ANTEO



<b>CARTRIDGES</b> CARTOUCHES - PATRONEN		Type	Diameter mm	Thread Inch	REF
		2/2	12,7	3/4 UNF	<a href="#">111TP1412</a>
		2/2	12,7	3/4 UNF	<a href="#">111TP1413</a>
		2/2	12,7	3/4 UNF	<a href="#">111TP1414</a>
		2/2	15,8	3/4 UNF	<a href="#">111TP1416</a>
		3/2	15,8-17,4	7/8 UNF	<a href="#">111TP1411</a>
		4/2	15,8-17,4-18,9	7/8 UNF	<a href="#">111TP1415</a>
		4/3	13	3/4 UNF	<a href="#">111TP2632</a>

COILS &amp; VALVES - BOBINES &amp; SOUPAPES - SPULEN &amp; VENTILE

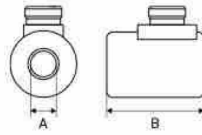
## USED ON ANTEO



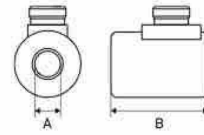
COILS &amp; VALVES – BOBINES &amp; SOUPAPES – SPULEN &amp; VENTILE

## COILS

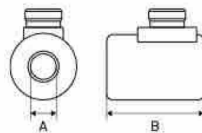
BOBINES – SPULEN



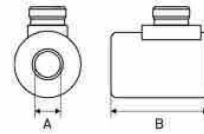
Voltage	Wattage	A mm	B mm	Info	REF
12	18	13	39	DIN	<a href="#">111TP1417</a>
24	18	13	39	DIN	<a href="#">111TP1418</a>



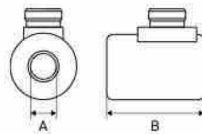
Voltage	Wattage	A mm	B mm	Info	REF
12	18	13	38,5	Kostal M27 x 1 mm	<a href="#">111TP1419</a>
24	18	13	38,5	Kostal M27 x 1 mm	<a href="#">111TP1420</a>



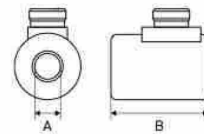
Voltage	A mm	B mm	Info	REF
12	14	40	DIN	<a href="#">111TP1425</a>
24	14	40	DIN	<a href="#">111TP1426</a>



Voltage	Wattage	A mm	B mm	REF
12	27	13	39	<a href="#">111TP1427</a>
24	27	13	39	<a href="#">111TP1428</a>



Voltage	A mm	B mm	Info	REF
12	18	40	Kostal M27 x 1 mm	<a href="#">111TP1423</a>
24	18	40	Kostal M27 x 1 mm	<a href="#">111TP1424</a>



Voltage	Wattage	A mm	B mm	REF
12	26	16	50	<a href="#">111TP1421</a>
24	26	16	50	<a href="#">111TP1422</a>

## VALVE BLOCKS

BOÎTIERS À SOUPAPES – STEUERBLÖCKE



- Type: 4/3
- Max 280 bar

REF [111TP1429](#)

# USED ON ANTEO



## VALVES & SWITCHES

SOUPAPES & INTERRUPTEURS – VENTILE & SCHALTER



- Length: 43,5 mm
- Thread: 3/8" BSP

**REF 111TP8056**



- Length: 30 mm
- Thread: 3/8" BSP

**REF 111TP8057**



- Length: 30 mm
- Thread: 3/8" BSP
- Info: 9 l/min

**REF 111TP8058**



- Length: 30 mm
- Thread: 3/8" BSP
- Info: 12 l/min

**REF 111TP8059**



- Voltage: 250 V
- Amperage: 6 A
- Thread: 1/4" BSP

**REF 111TP1430**

COILS & VALVES – BOBINES & SOUPAPES – SPULEN & VENTILE

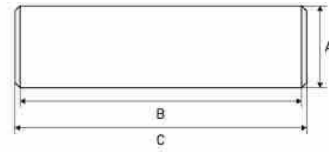
## USED ON ANTEO



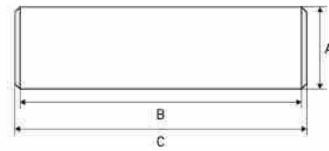
PINS, BUSHINGS &amp; ROLLERS - AXES, BAGUES &amp; GALETS - ACHSEN, BUCHSEN &amp; ROLLEN

## PINS

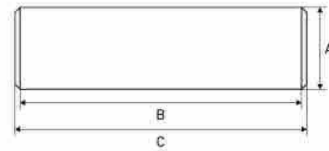
AXES - ACHSEN



A mm	B mm	C mm	REF
30	63	78	<a href="#">111TP1431</a>
30	74	89	<a href="#">111TP1432</a>
30	84	99	<a href="#">111TP1433</a>
30	123	138	<a href="#">111TP1434</a>



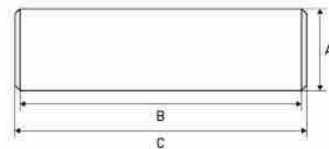
A mm	B mm	C mm	REF
35	119	130	<a href="#">111TP1435</a>



HYDEM

HYDEM version, axe with removable plate

A mm	B mm	C mm	REF
35	122	122	<a href="#">111TP8589</a>



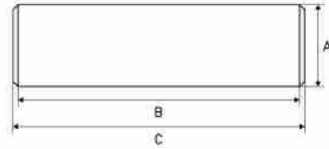
A mm	B mm	C mm	REF
30	123	138	<a href="#">111TP8086</a>

# USED ON ANTEO

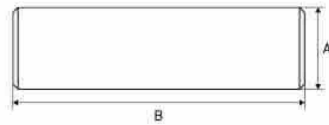


## PINS

AXES - ACHSEN



A mm	B mm	C mm	REF
30	307/M16	370/M10	<a href="#">111TP1346</a>



A mm	B mm	REF
22	152	<a href="#">111TP8060</a>



Diameter mm	Length mm	Info	REF
20	2500	Universal	<a href="#">111TP8592</a>
25	735	Male	<a href="#">111TP8595</a>
30	830	Female	<a href="#">111TP8593</a>

PINS, BUSHINGS & ROLLERS - AXES, BAGUES & GALETS - ACHSEN, BUCHSEN & ROLLEN

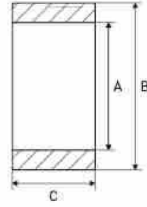
# USED ON ANTEO



PINS, BUSHINGS & ROLLERS - AXES, BAGUES & GALETS - ACHSEN, BUCHSEN & RÖLLEN

## PLATFORM ROLLERS

GALETS DE HAYON = PLATTFORMRÖLLEN



A mm	B mm	C mm	REF
11	61	27	<a href="#">111TP1436</a>
12	50	28	<a href="#">111TP1437</a>
12,5	71	28	<a href="#">111TP1438</a>
12	100	30	<a href="#">111TP1439</a>
25	70	80	<a href="#">111TP1440</a>
26	70	35	<a href="#">111TP1441</a>
31	80	35	<a href="#">111TP1442</a>
35	90	35	<a href="#">111TP1444</a>
30	130	35	<a href="#">111TP1443</a>

## PLATFORM ROLLER SETS

KITS DE GALETS DE HAYON - PLATTFORMRÖLLENSETS

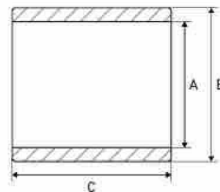


- Diameter axle: 30 mm
- Length: 133 mm
- Diameter wheel: 31/79 mm
- Thickness wheel: 34,5 mm

**REF 111TP8061**

## BUSHINGS

BAGUES - BUCHSEN



A mm	B mm	C mm	Info	REF
30	34	15	DX	<a href="#">111TP1445</a>
30	34	20	DX	<a href="#">111TP1446</a>
30	34	25	DX	<a href="#">111TP1447</a>
30	34	30	DX	<a href="#">111TP1448</a>
30	34	40	DX	<a href="#">111TP1449</a>
35	39	30	DX	<a href="#">111TP1450</a>

See chapter Universal parts on page 705 for more parts.

# USED ON ANTEO



## ROLL STOPS & PARTS

BUTÉES DE ROUES & ACCESSOIRES - ABROLLSICHERUNGEN & ERSATZTEILE



- Set
- Diameter: 12 mm
- Length: 270 mm

**REF 111TP1452**



- F3RE AM
- Length: 78 mm
- Width: 42 mm
- Height: 20 mm
- Hole: 13 mm

**REF 111TP1453**



- Kit roll stop LH + RH
- Length: 800 mm

**REF 112TP9932**

MECHANICAL PARTS - PIÈCES MÉCANIQUES - MECHANISCHE ERSTATZTEILE

## USED ON ANTEO



MECHANICAL PARTS – PIÈCES MÉCANIQUES – MECHANISCHE ERSTATZTEILE

## SPRINGS &amp; GAS SPRINGS

RESSORTS &amp; VÉRINS À GAZ – FEDERN &amp; GASDRUCKFEDERN



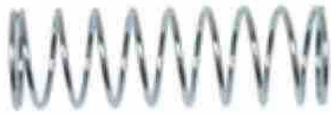
1

2

Diameter mm	Info	REF
60/12	Left	<a href="#">111TP1454</a>
60/12	Right	<a href="#">111TP1455</a>



Diameter mm	Length mm	Thickness mm	REF
16	90	1,5	<a href="#">111TP1456</a>



Diameter mm	Length mm	Thickness mm	REF
30	95	2	<a href="#">111TP1457</a>



Diameter mm	Diameter eye mm	Length mm	Info	REF
10 x 22	8	605	1000 N	<a href="#">111TP1458</a>
10 x 22	8	705	1000 N	<a href="#">111TP1459</a>



Info	REF
Roll stop spring	<a href="#">112TP9933</a>

See chapter Universal parts on page 707 for more parts.



# USED ON ANTEO



## BUMPERS & BUFFERS

PARE-CHOC & BUTOIRS - STOSSDÄMPFER & -PUFFER



**REF 111TP1460** - Diameter: 25 x 15 mm  
**REF 111TP1461** - Diameter: 50 x 20 mm



- Inner: M14
- Outer: M10
- Number of holes: 4

**REF 111TP8062**



Tightening spacer

**REF 112TP9934**



Rack blocking

**REF 112TP9935**



Retractable rack-and-pinion

**REF 111TP9901**



Hydraulic brake jaw (upper element)

**REF 112TP9936**



Hydraulic brake jaw (lower element)

**REF 112TP9937**



Rack fixing kit

**REF 112TP5738**

MECHANICAL PARTS - PIÈCES MÉCANIQUES - MECHANISCHE ERSTATZTEILE

## USED ON ANTEO



MECHANICAL PARTS – PIÈCES MÉCANIQUES – MECHANISCHE ERSTATZTEILE

## SLIDE BLOCKS, ROLLERS &amp; WEAR PLATES

BLOCS DE DÉFILEMENT, GALETS &amp; PLAQUES D'USURE – GLEITBLÖCKE, LAUFROLLEN &amp; VERSCHLEISSPLATTEN



- Length: 139 mm
- Width: 79 mm
- Height: 27 mm

REF [111TP8590](#)

- Length: 88 mm
- Width: 79,5 mm
- Height: 27 mm

REF [111TP9899](#)


Diameter: 54 mm

REF [111TP8591](#)

Slip block

REF [112TP9938](#)

Retraction roller

REF [112TP9939](#)

- Transmission shaft central
- Length: 830 mm

REF [112TP9940](#)

- Transmission shaft outside
- Length: 735 mm

REF [112TP9941](#)

- Retraction tree assembles steel tube
- Diameter: 24 mm
- Finishing white zinc coating

REF [111TP8597](#)

# USED ON ANTEO



## CAPS

BOUCHONS - DECKEL



- Length: 100 mm
- Width: 50 mm

**REF 111TP1462**



Diameter: 100 mm

**REF 111TP1463**



Diameter: 100 mm

**REF 111TP9074**



Diameter: 120 mm

**REF 111TP9900**



1



2

- Length: 144 mm
- Width: 54 mm

1. **REF 111TP8064** - Left
2. **REF 111TP8063** - Right

See chapter Universal parts on page 707 for more parts.

MECHANICAL PARTS - PIÈCES MÉCANIQUES - MECHANISCHE ERSTATZTEILE

## USED ON ANTEO



MECHANICAL PARTS – PIÈCES MÉCANIQUES – MECHANISCHE ERSTATZTEILE

## PLATFORM PARTS

PIÈCES DE PLATEFORME – PLATTFORMERSATZTEILE



- Length: 400 mm
- Width: 250 mm
- § 53b Abs. 5 StVZO
- TÜV/CE with certificate

**REF 111TP1469**

- Length: 400 mm
- Width: 250 mm
- § 53b Abs. 5 StVZO
- TÜV/CE with certificate

**REF 111TP1320****1****2**

Length: 303 mm

1. **REF 111TP1464** – Left
2. **REF 111TP1465** – Right



- Length: 2600 mm
- Width: 40 mm
- Height: 13 mm

**REF 111TP1466**

- Length: 2600 mm
- Width: 35 mm

**REF 111TP8066**

Length: 2700 mm

**REF 111TP1467**

Sold per metre

**REF 111TP1468**

- Length: 800 mm
- Width: 110 mm
- Height: 12 mm

**REF 111TP8065**

See chapter Universal parts on page 708 for more parts.

# USED ON ANTEO



## JOYSTICKS

LEVIERS DE COMMANDE - JOYSTICKS



2 x NO

**REF 111TP1475**



2 x NO - 2 x NC

**REF 111TP1476**

## ROTARY/PUSH SWITCHES & PARTS

INTERRUPTEURS ROTATIFS/POUSOIRS & ACCESSOIRES - DREH-/DRUCKSCHALTER & ERSATZTEILE



Red

**REF 111TP9903** - 1 x NO  
**REF 111TP1477** - 2 x NO



Black

**REF 111TP9904** - 1 x NO  
**REF 111TP1478** - 2 x NO



· 2 positions (0-II)  
· 2 x NO

**REF 111TP1479**



· 3 positions (II-0-I)  
· 2 x NO

**REF 111TP1480**



· 3 positions (I-0-I)  
· 2 x NO

**REF 111TP1481**



· 3 positions (II-0-II)  
· 2 x NO

**REF 111TP1482**

SWITCHES & CONTROLLERS - INTERRUPTEURS & COMMANDES - SCHALTER & BEDIENUNGEN

## USED ON ANTEO



SWITCHES & CONTROLLERS - INTERRUPTEURS & COMMANDES - SCHALTER & BEDIENUNGEN

### ROTARY/PUSH SWITCHES & PARTS

INTERRUPTEURS ROTATIFS/POUSOIRS & ACCESSOIRES - DREH-/DRUCKSCHALTER & ERSATZTEILE



- 3 positions (II-0-II)
- 3 x NO

**REF 111TP8087**



- 4 positions (II-II-0-I)
- 2 x NO

**REF 111TP8088**



- 4 positions (II-II-0-I)
- 2 x NO - 1 x NC

**REF 111TP8089**



- Diameter: 21,5/27/30 mm
- Length: 53 mm

**REF 111TP8072**



- Voltage: 400 V
- Wattage: 3 W
- Length: 59 mm

**REF 111TP8073**

# USED ON ANTEO



## CONTACT ELEMENTS

BLOCS DE CONTACT - KONTAKTELEMENTE



1 x NO

**REF 111TP1486**



1 x NC

**REF 111TP1487**



1 x NO

**REF 111TP9905**



1 x NC

**REF 111TP9906**



1 x NO with holder

**REF 111TP8555**



1 x NC with holder

**REF 111TP8074**



Contact element, base fixation metal

**REF 111TP8554**

SWITCHES & CONTROLLERS - INTERRUPTEURS & COMMANDES - SCHALTER & BEDIENUNGEN

## USED ON ANTEO



SWITCHES & CONTROLLERS - INTERRUPTEURS & COMMANDES - SCHALTER & BEDIENUNGEN

### BATTERY/EMERGENCY SWITCHES & PARTS

COUPE BATTERIE/INTERRUPTEURS D'ARRÊT D'URGENCE & ACCESSOIRES - BATTERIE-/NOTSTOPPSCHALTER & ERSATZTEILE



- Amperage: 100 A
- Thread: M10

**REF 111TP1488**



Used on REF [111TP1488](#)

**REF 111TP1489**



2 functions

**REF 111TP8090**



2 functions

**REF 111TP8556**



2 functions

**REF 111TP9907**

### LIMIT/MICRO SWITCHES

INTERRUPTEURS DE FIN DE COURSE - MICRORUPTEURS - END-/MIKROSCHALTER



- Amperage: 3 A
- Length: 395 mm
- IP67

**REF 111TP8075**

See chapter Universal parts on page 711 for more parts.



# USED ON ANTEO



## SENSORS & SWITCHES

CAPTEURS & INTERRUPTEURS - SENSOREN & SCHALTER



- Length: 2000 mm
- Thread: M18 x 1 mm

**REF 111TP1490**



Length: 2500 mm

**REF 111TP1491**

## CONTROL BOXES & PARTS

BITIERS DE CONTRLE & ACCESSOIRES - BEDIENKÄSTEN & ERSTAZTEILE



- Length: 260 mm
- Width: 150 mm

**REF 111TP8070**



- Length: 250 mm
- Width: 175 mm

**REF 112TP9942**

SWITCHES & CONTROLLERS - INTERRUPTEURS & COMMANDES - SCHALTER & BEDIENUNGEN

# USED ON ANTEO



SWITCHES & CONTROLLERS - INTERRUPTEURS & COMMANDES - SCHALTER & BEDIENUNGEN

## CONTROLLERS

COMMANDES - BEDIENUNGEN



Operate your tail lift with our high-quality hand controls available in 2- or 3-button configurations.

**Your benefits:**

- Maximum comfort, high productivity
- Unique ergonomic design
- Easy push system
- With magnet and ring for easy handling
- Rubber shock absorber
- Usable in cold and wet environments

**Specifications:**

- Protection (IP): IP44 according to EN 60 529
- Contact type: Mafelec (push button)
- Max amperage: 10 A
- Operating temperature: -25 °C up to 60 °C
- Material: ABS plastic with rubber buffer
- Cable: polyurethane 3,5 metres working length

**Applications:**

Tail lifts, winches, cranes to name a few

**Available colours:**

Orange, yellow, green, red and blue

**Available in different colours and in 2- or 3-button configurations. Ask for your quantity discount. All models are equipped with Mafelec switches.**

**2-button hand controls with cable and connector**

Make	Colour	REF
Anteo	Blue	<a href="#">111TP5189</a>

**3-button hand controls with cable and connector**

Make	Colour	REF
Anteo	Blue	<a href="#">111TP5201</a>

**2-button hand controls without cable**

Colour	REF
Orange	<a href="#">111TP5214</a>
Blue	<a href="#">111TP5215</a>
Red	<a href="#">111TP5216</a>
Yellow	<a href="#">111TP5217</a>
Green	<a href="#">111TP5218</a>

**3-button hand controls without cable**

Colour	REF
Orange	<a href="#">111TP5219</a>
Blue	<a href="#">111TP5220</a>
Yellow	<a href="#">111TP5221</a>
Red	<a href="#">111TP5222</a>
Green	<a href="#">111TP5223</a>

## CONTROLLERS

COMMANDES - BEDIENUNGEN



- 2 x NO
- Mafelec switch

**REF [111TP8092](#)**



- 1 x NO + 1 x NC
- Mafelec switch

**REF [111TP8093](#)**

See chapter Universal parts on page 712 for more parts.

# USED ON ANTEO



## FOOT CONTROLLERS & PARTS

COMMANDES AU PIED & ACCESSOIRES - FUSSSCHALTER & ERSATZTEILE



Neutral

REF [111TP1483](#)



Up

REF [111TP1484](#)



Down

REF [111TP1485](#)



Kit

REF [111TP8067](#)



Diameter: 50 mm

REF [111TP9902](#)



Diameter: 22/75 mm - 3 x 5

REF [111TP8068](#)

## KEYS

CLÉS - SCHLÜSSEL



REF [111TP1492](#)

SWITCHES & CONTROLLERS - INTERRUPTEURS & COMMANDES - SCHALTER & BEDIENUNGEN

**USED ON ANTEO**

CABLES &amp; CONNECTORS - CÂBLES &amp; CONNECTEURS - KABEL &amp; STECKER

**KOSTAL CABLES**

CÂBLES KOSTAL - KOSTALKABEL



- Length: 4000 mm
- Thread: M24 x 1 mm/M27 x 1 mm

**REF 111TP1499****CABLES & PARTS**

CÂBLES DE BATTERIE - KABEL &amp; ERSATZTEILE



Length: 6525 mm

**REF 111TP8076**

# USED ON ANTEO



## CONNECTORS & PARTS

CONNECTEURS & ACCESSOIRES – STECKER & ERSATZTEILE



- 7-pole
- DIN 72577-ISO 1724

**REF 111TP1500**



- 7-pole
- DIN 72577-ISO 1724

**REF 111TP1501**



Amperage: 250 A

**REF 111TP8096**



Amperage: 250 A

**REF 111TP8097**



Hirschmann (GSA)

**REF 111TP1502**



Amperage: 250 A

**REF 111TP9838**

See chapter Universal parts on page 719 for more parts.

CABLES & CONNECTORS – Câbles & Connecteurs – Kabel & Stecker

# USED ON ANTEO



ELECTRICAL PARTS - PIÈCES ÉLECTRIQUES - ELEKTRISCHE ERSATZTEILE

## FLASHER LIGHTS & PARTS

LAMPES TORCHES & ACCESSOIRES - BLINKLEUCHTEN & ERSATZTEILE



Voltage: 12/24 V

REF [111TP1505](#)



- Voltage: 12/24 V
- HYDEM version
- Extra mounting plate

REF [111TP8598](#)



Voltage: 12/24 V

REF [111TP8094](#)

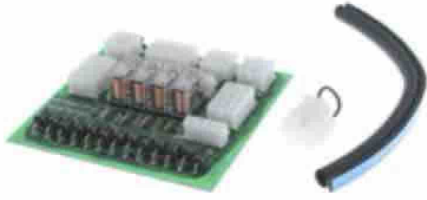
See chapter Universal parts on page 725 for more parts.

# USED ON ANTEO



## PRINTED CIRCUIT BOARDS/CONTROLLERS

CIRCUITS IMPRIMÉS/COMMANDES - LETTERPLATTEN/BEDIENUNGEN



**REF 111TP8077** - Voltage: 12 V  
**REF 111TP8078** - Voltage: 24 V

· Length: 54 mm  
 · Width: 44 mm

**REF 111TP8079**



· Control board 3 relays  
 · Voltage: 24 V

**REF 112TP9943**



Flasher unit

**REF 112TP9944**



· Remote control adapter case  
 · Voltage: 12 V

**REF 112TP9945**

ELECTRICAL PARTS - PIÈCES ÉLECTRIQUES - ELEKTRISCHE ERSATZTEILE

# USED ON ANTEO



ELECTRICAL PARTS - PIÈCES ÉLECTRIQUES - ELEKTRISCHE ERSATZTEILE

## RELAYS

RELAIS - RELAIS



Voltage	Amperage	Info	REF
12	30	NO/NC	<a href="#">111TP1506</a>
24	20	NO/NC	<a href="#">111TP1507</a>



Voltage	Amperage	REF
12	16	<a href="#">111TP8081</a>
24	16	<a href="#">111TP8080</a>

See chapter Universal parts on page 727 for more parts.

## FUSES

FUSIBLES - SICHERUNGEN



For complete range see

Amperage	Colour	Info	REF
100	Yellow	Mega	<a href="#">111TP1508</a>
175	White	Mega	<a href="#">111TP1509</a>
200	Blue	Mega	<a href="#">111TP1510</a>
225	Beige	Mega	<a href="#">111TP1511</a>
250	Black	Mega	<a href="#">111TP8095</a>

See chapter Universal parts on page 728 for more parts.

## FUSE HOLDERS & PARTS

PORTE-FUSIBLES & ACCESSOIRES - SICHERUNGSHALTER & ERSATZTEILE



DIN 72581/med  
REF [111TP1512](#)



DIN 72581/med  
REF [111TP5259](#)

See chapter Universal parts on page 732 for more parts.

## THYRISTORS & DIODES

THYRISTORS & DIODES - THYRISTOREN & DIODEN



Amperage: 6 A

REF [111TP1513](#)