



**USED ON**  
**BÄR CARGOLIFT**

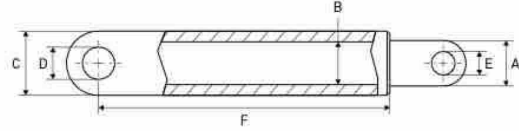
# USED ON BÄR CARGOLIFT



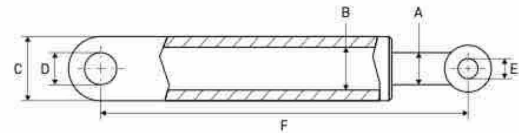
CYLINDERS – VÉRINS/CYLINDRES – ZYLINDER

## LIFT CYLINDERS

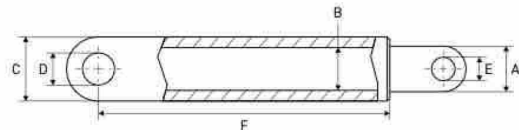
VÉRINS DE LEVAGE – HUBZYLINDER



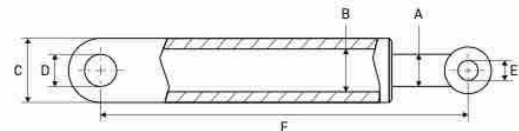
A mm	C mm	D mm	E mm	F mm	Info	REF	
						Cylinder	Seal kit
50	65	30	30	440	BC 1000	111TP1514	112TP9964



A mm	C mm	D mm	E mm	F mm	Info	REF	
						Cylinder	Seal kit
60	80	30	30	460	SX1 – 750/751	111TP1515	111TP1553



A mm	C mm	D mm	E mm	F mm	Info	REF	
						Cylinder	Seal kit
60	75	35	35	540	BC 1500	111TP1516	111TP1552



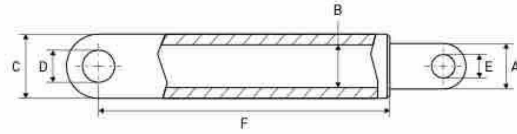
A mm	C mm	D mm	E mm	F mm	Info	REF	
						Cylinder	Seal kit
70	90	35	30	522	SX1 – 1000	111TP1517	112TP9965

# USED ON BÄR CARGOLIFT

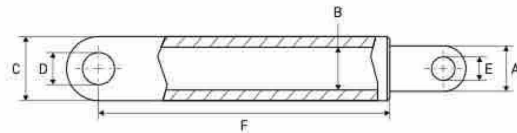


## LIFT CYLINDERS

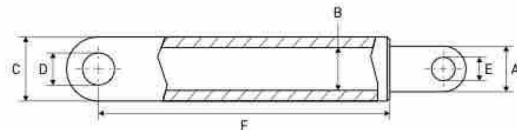
VÉRINS DE LEVAGE - HUBZYLINDER



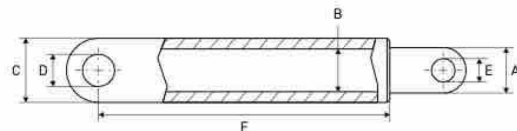
A mm	C mm	D mm	E mm	F mm	Info	REF	
						Cylinder	Seal kit
85	102	40	40	540	BC 1000 - 1500 - 2000	<a href="#">111TP1518</a>	<a href="#">111TP1558</a>



A mm	C mm	D mm	E mm	F mm	Info	REF	
						Cylinder	Seal kit
70	85	35	35	543	BC 2000	<a href="#">111TP1519</a>	<a href="#">111TP1554</a>



A mm	C mm	D mm	E mm	F mm	Info	REF	
						Cylinder	Seal kit
49,5	65	30	30	497	BC 1000S-44	<a href="#">111TP8098</a>	<a href="#">111TP1546</a>



A mm	C mm	D mm	E mm	F mm	Info	REF	
						Cylinder	Seal kit
70	85	35	35	500	BC 2000	<a href="#">111TP1520</a>	<a href="#">111TP1554</a>

CYLINDERS - VÉRINS/CYLINDRES - ZYLINDER

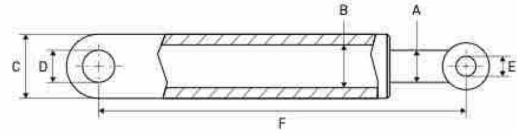
# USED ON BÄR CARGOLIFT



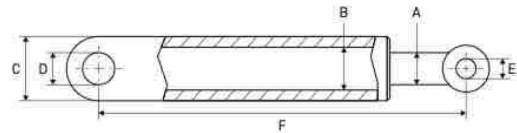
CYLINDERS - VÉRINS/CYLINDRES - ZYLINDER

## TILT CYLINDERS

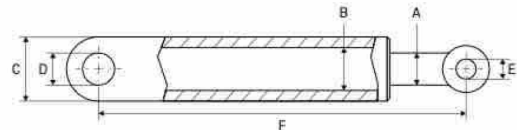
VÉRIN D'INCLINAISON - SCHLISSZYLINDER



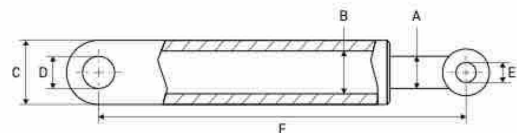
A mm	B mm	C mm	D mm	E mm	F mm	REF	
						Cylinder	Seal kit
36	50	60	30	M33 x 1,5	357	111TP1521	111TP1542



A mm	B mm	C mm	D mm	E mm	F mm	REF	
						Cylinder	Seal kit
40	60	70	35	M38 x 2	372	111TP1522	111TP1543



A mm	B mm	C mm	D mm	E mm	F mm	REF	
						Cylinder	Seal kit
45	80	90	35	M85	640	111TP1523	111TP1557



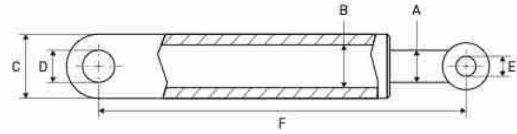
A mm	B mm	C mm	D mm	E mm	F mm	REF	
						Cylinder	Seal kit
50	70	82	35	M48 x 2	420	111TP1524	111TP1548

# USED ON BÄR CARGOLIFT

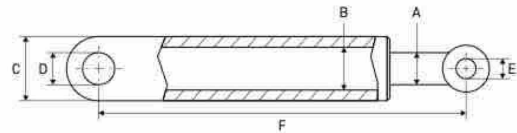


## TILT CYLINDERS

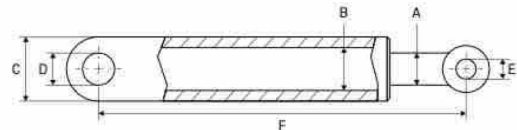
VÉRIN D'INCLINAISON - SCHLISSZYLINDER



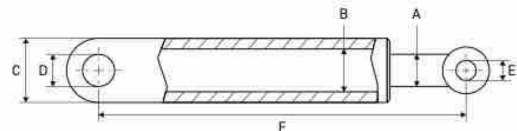
A mm	B mm	C mm	D mm	E mm	F mm	REF	
						Cylinder	Seal kit
50	70	82	35	M48 x 2	470	111TP1525	111TP1548



A mm	C mm	D mm	E mm	F mm	Info	REF	
						Cylinder	Seal kit
49,5	65	30	M36 x 1,5	446	BC 1000S-44	111TP8102	111TP1546



A mm	B mm	C mm	D mm	E mm	F mm	REF	
						Cylinder	Seal kit
40	70	80	30	M30	635	111TP8103	111TP1544



A mm	B mm	C mm	D mm	E mm	F mm	REF	
						Cylinder	Seal kit
50	90	105	40	M48 x 2	695	111TP8104	111TP1551

CYLINDERS - VÉRINS/CYLINDRES - ZYLINDER

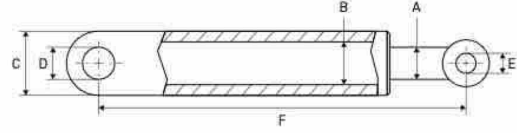
# USED ON BÄR CARGOLIFT



CYLINDERS – VÉRINS/CYLINDRES – ZYLINDER

## FOLD CYLINDERS

VÉRINS DE REPLIAGE – FALTZYLINDER



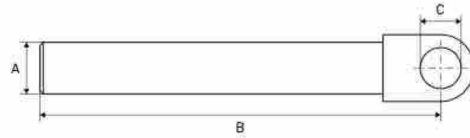
A	C	D	E	F	REF	
mm	mm	mm	mm	mm	Cylinder	Seal kit
32	45	25	M16	319	<a href="#">111TP1526</a>	<a href="#">111TP1541</a>

# USED ON BÄR CARGOLIFT

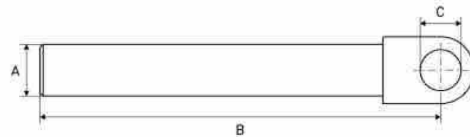


## PISTON RODS

TIGES DE PISTON – KOLBENSTANGEN



A mm	B mm	C mm	Info	REF
36	392	50	Used on cylinder: REF <a href="#">111TP1521</a>	<a href="#">111TP1527</a>
40	424	60	Used on cylinder: REF <a href="#">111TP1522</a>	<a href="#">111TP1528</a>
50	482	70	Used on cylinder: REF <a href="#">111TP1524</a>	<a href="#">111TP1529</a>



A mm	B mm	C mm	Diameter mm	Info	REF
60	383	30	60	Used on cylinder: REF <a href="#">111TP1515</a>	<a href="#">111TP1530</a>



A mm	B mm	C mm	Diameter mm	Info	REF
70	462	30	70	Used on cylinder: REF <a href="#">111TP1517</a>	<a href="#">111TP1531</a>



A mm	B mm	C mm	Info	REF
50	385	30	Used on cylinder: REF <a href="#">111TP1514</a>	<a href="#">111TP1532</a>
60	495	35	Used on cylinder: REF <a href="#">111TP1516</a>	<a href="#">111TP1533</a>
60	540	30		<a href="#">111TP1534</a>
70	500	35	Cylinder used for REF <a href="#">111TP1519</a>	<a href="#">111TP1535</a>

CYLINDER PARTS – PIÈCES DE CYLINDRE – ZYLINDER-ERSATZTEILE

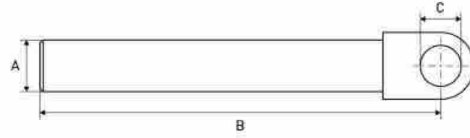
# USED ON BÄR CARGOLIFT



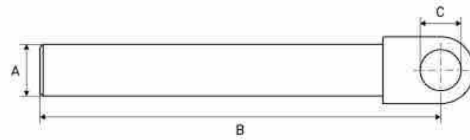
CYLINDER PARTS – PIÈCES DE CYLINDRE – ZYLINDER-ERSATZTEILE

## PISTON RODS

TIGES DE PISTON – KOLBENSTANGEN



A mm	B mm	C mm	Info	REF
49,5	375	M36 x 1,5	Used on cylinder: REF <a href="#">111TP8102</a>	<b>111TP8109</b>



A mm	B mm	C mm	Info	REF
49,5	422	30	Used on cylinder: REF <a href="#">111TP8090</a>	<b>111TP8110</b>



A mm	B mm	C mm	Info	REF
85	471	40	Used on cylinder: REF <a href="#">111TP1518</a>	<b>111TP8111</b>

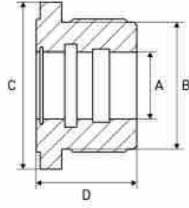


# USED ON BÄR CARGOLIFT



## CYLINDER HEADS

CULASSES - ZYLINDERKÖPFE



	A mm	B mm	C mm	D mm	Info	REF
	36	50	58	46	Used on cylinder: REF <a href="#">111TP1521</a>	<a href="#">111TP1536</a>
	40	60	60	42	Used on cylinder: REF <a href="#">111TP1522</a>	<a href="#">111TP1537</a>
	40	70	80	45	Used on cylinder: REF <a href="#">111TP8103</a>	<a href="#">111TP1538</a>
	45	80	90	63	Used on cylinder: REF <a href="#">111TP1523</a>	<a href="#">111TP1539</a>
	50	70	70	42	Used on cylinder: REF <a href="#">111TP1524</a>	<a href="#">111TP1540</a>

CYLINDER PARTS - PIÈCES DE CYLINDRE - ZYLINDER-ERSATZTEILE

# USED ON BÄR CARGOLIFT



CYLINDER PARTS – PIÈCES DE CYLINDRE – ZYLINDER-ERSATZTEILE

## SEAL KITS

KITS DE JOINTS – DICHTUNGSSÄTZE



Diameter: 32/40 mm

**REF 111TP1541**



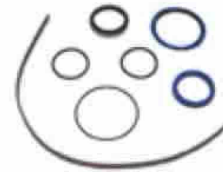
Diameter: 36/50 mm

**REF 111TP1542**



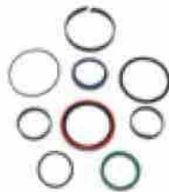
Diameter: 40/60 mm

**REF 111TP1543**



Diameter: 40/70 mm

**REF 111TP1544**



Diameter: 45/80 mm

**REF 111TP1545**



Diameter: 50/60 mm

**REF 111TP1546**



Diameter: 50/60 mm

**REF 111TP1547**



Diameter: 50/70 mm

**REF 111TP1548**



Diameter: 50/70 mm

**REF 111TP1549**



Diameter: 50/80 mm

**REF 111TP1550**

# USED ON BÄR CARGOLIFT



## SEAL KITS

KITS DE JOINTS - DICHTUNGSSÄTZE



Diameter: 50/90 mm

**REF 111TP1551**



Diameter: 60/62 mm

**REF 111TP8112**



Diameter: 60/70 mm

**REF 111TP1552**



Diameter: 60/70 mm

**REF 111TP1553**



Diameter: 70/80 mm

**REF 111TP1554**



Diameter: 70/80 mm

**REF 111TP1555**



Diameter: 70/80 mm

**REF 111TP1556**



Diameter: 70/80 mm

**REF 111TP8113**



Diameter: 80/45 mm

**REF 111TP1557**



Diameter: 85/95 mm

**REF 111TP1558**

CYLINDER PARTS - PIÈCES DE CYLINDRE - ZYLINDER-ERSATZTEILE

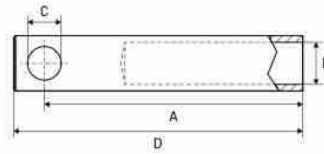
# USED ON BÄR CARGOLIFT



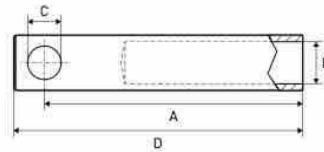
CYLINDER PARTS – PIÈCES DE CYLINDRE – ZYLINDER-ERSATZTEILE

## EXTENSIONS

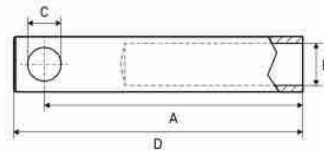
RALLONGES – VERLÄNGERUNG



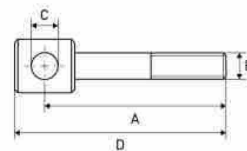
A mm	B mm	C mm	D mm	Info	REF
320	M38	35	356	AL800	<b>111TP1559</b>



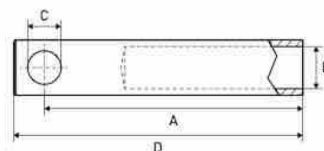
A mm	B mm	C mm	D mm	Info	REF
420	M38	35	456	AL900	<b>111TP1560</b>



A mm	B mm	C mm	D mm	Info	REF
520	M38	35	555	AL1000	<b>111TP1561</b>



A mm	B mm	C mm	D mm	Info	REF
70	M16	17	92	GE17	<b>111TP1562</b>



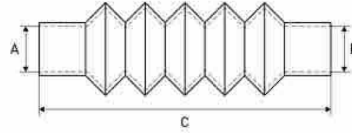
A mm	B mm	C mm	D mm	Info	REF
354	M48	35	390	AL900	<b>111TP8114</b>

# USED ON BÄR CARGOLIFT

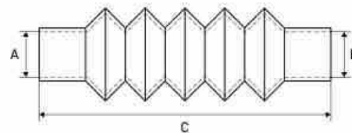


## DUST COVERS

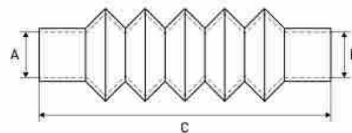
CACHE-POUSSIÈRE - STAUBKAPPE



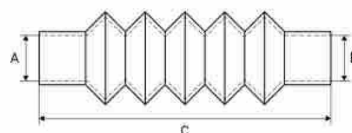
Diameter		Length		REF		
A	B	Min - C - Max	Cover	Clamp 1	Clamp 2	
mm	mm	mm				
50	70	120 - 310 - 500	<a href="#">111TP1563</a>	<a href="#">111TP4916</a>	<a href="#">111TP4918</a>	



Diameter		Length		REF		
A	B	Min - C - Max	Cover	Clamp 1	Clamp 2	
mm	mm	mm				
60	110	230 - 380 - 430	<a href="#">111TP1565</a>	<a href="#">111TP5004</a>	<a href="#">111TP4924</a>	



Diameter		Length		REF		
A	B	Min - C - Max	Cover	Clamp 1	Clamp 2	
mm	mm	mm				
60	80	190 - 440 - 640	<a href="#">111TP1566</a>	<a href="#">111TP5004</a>	<a href="#">111TP5005</a>	



Diameter		Length		REF		
A	B	Min - C - Max	Cover	Clamp 1	Clamp 2	
mm	mm	mm				
70	70	110 - 250 - 450	<a href="#">111TP1567</a>	<a href="#">111TP5005</a>	<a href="#">111TP5005</a>	

CYLINDER PARTS - PIÈCES DE CYLINDRE - ZYLINDER-ERSATZTEILE

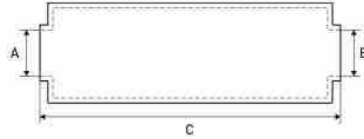
# USED ON BÄR CARGOLIFT



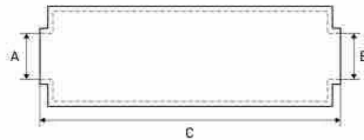
CYLINDER PARTS – PIÈCES DE CYLINDRE – ZYLINDER-ERSATZTEILE

## PROTECTIVE COVERS

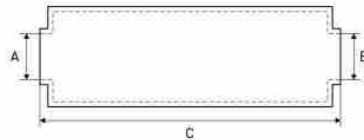
HOUSSES DE PROTECTION – SCHUTZROHRE



Diameter		Length		REF	
A	B	C	Cover	Clamp	
mm	mm	mm			
55	80	320	<a href="#">111TP1568</a>	<a href="#">111TP5004</a>	



Diameter		Length		REF	
A	B	C	Cover	Clamp	
mm	mm	mm			
55	85	180	<a href="#">111TP1569</a>	<a href="#">111TP5004</a>	



Diameter		Length		REF	
A	B	C	Cover	Clamp	
mm	mm	mm			
85	115	300	<a href="#">111TP1571</a>	<a href="#">111TP4999</a>	



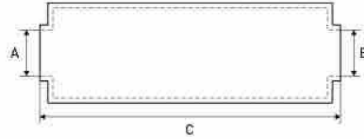
Diameter		Length		REF	
A	B	C	Cover	Clamp	
mm	mm	mm			
70	110	310	<a href="#">111TP1572</a>	<a href="#">111TP5004</a>	

# USED ON BÄR CARGOLIFT



## PROTECTIVE COVERS

HOUSESSE DE PROTECTION - SCHUTZROHRE



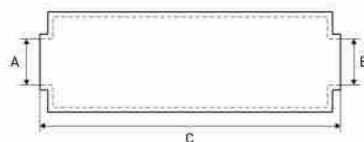
Diameter		Length		REF	
A	B	C	Cover	Clamp	
mm	mm	mm			
85	100	300	111TP1573	111TP5005	



Diameter		Length		REF	
A	B	C	Cover	Clamp	
mm	mm	mm			
70	100	320	111TP8115	111TP5005	



Diameter		Length		REF	
A	B	C	Cover	Clamp	
mm	mm	mm			
70	95	322	111TP8116	111TP5005	



Diameter		Length		REF	
A	B	C	Cover	Clamp	
mm	mm	mm			
50	70	300	111TP8117	111TP5005	

CYLINDER PARTS - PIÈCES DE CYLINDRE - ZYLINDER-ERSATZTEILE

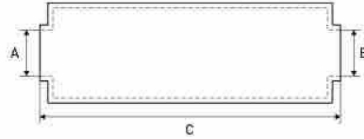
# USED ON BÄR CARGOLIFT



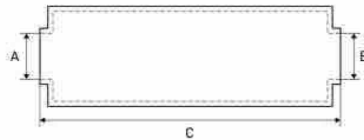
CYLINDER PARTS – PIÈCES DE CYLINDRE – ZYLINDER-ERSATZTEILE

## PROTECTIVE COVERS

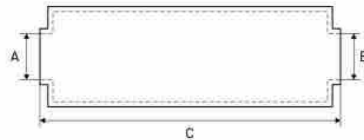
HOUSESSE DE PROTECTION – SCHUTZROHRE



Diameter		Length		REF	
A	B	C	Cover	Clamp	
mm	mm	mm			
65	90	220	<a href="#">111TP8118</a>	<a href="#">111TP5004</a>	



Diameter		Length		REF	
A	B	C	Cover	Clamp	
mm	mm	mm			
85	115	340	<a href="#">111TP8119</a>	<a href="#">111TP5005</a>	



Diameter		Length		REF	
A	B	C	Cover	Clamp	
mm	mm	mm			
50	70	290	<a href="#">111TP8120</a>	<a href="#">111TP5005</a>	



# USED ON BÄR CARGOLIFT



## SEALS

JOINTS – DICHTUNGEN



Thread	Dimensions	REF
M10	10,7 x 16,08 x 1,5 mm	<a href="#">111TP1574</a>



Diameter	Length	REF
4,5 mm	1005 mm	<a href="#">111TP1575</a>

## O-RINGS

JOINTS TORIQUES – O-RINGE



Diameter mm	Thickness mm	REF
9,2	1,7	<a href="#">111TP1576</a>
17	2	<a href="#">111TP1577</a>
17,3	2,4	<a href="#">111TP1578</a>
26	2	<a href="#">111TP1579</a>
28	2	<a href="#">111TP1580</a>
29,8	1,7	<a href="#">111TP1581</a>
30	3,5	<a href="#">111TP1582</a>
33	3,5	<a href="#">111TP1583</a>
34	3	<a href="#">111TP1584</a>
40	1,5	<a href="#">111TP1585</a>
40	2	<a href="#">111TP1586</a>
40,6	5,3	<a href="#">111TP1587</a>
47	5,3	<a href="#">111TP1588</a>
60	3	<a href="#">111TP1589</a>
63	3,5	<a href="#">111TP1590</a>
101,1	3,5	<a href="#">111TP1591</a>
247	2	<a href="#">111TP1592</a>

See chapter Universal parts on page 694 for more parts.

## QUAD RINGS

JOINTS QUADRILOBES – QUAD-RINGE



Diameter mm	Thickness mm	REF
29,5	5,3	<a href="#">111TP1593</a>
29,8	2,6	<a href="#">111TP1594</a>
34,2	5,3	<a href="#">111TP1595</a>
34,5	2,6	<a href="#">111TP1596</a>

SEALS & RINGS – JOINTS & RONDELLES – DICHTUNGEN & RINGE

# USED ON BÄR CARGOLIFT



POWER PACKS & PARTS - GROUPE HYDRAULIQUE & ACCESSOIRES - AGGREGATE & ERSATZTEILE

## DC HYDRAULIC POWER UNITS

GROUPE HYDRAULIQUE DC - DC HYDRAULIKAGGREGAT



Voltage	kW	REF
12	0,8	<a href="#">112TP9812</a>



Voltage	kW	REF
12	1,6	<a href="#">111TP9779</a>
24	2,5	<a href="#">111TP9780</a>

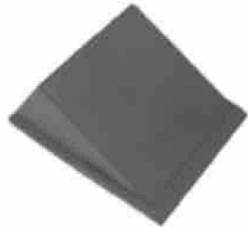


Voltage	kW	REF
12	1,6	<a href="#">111TP9781</a>
24	2,2	<a href="#">111TP9782</a>

See chapter Universal parts on page 697 for more parts.

## COVERS

COUVERCLES - ABDECKUNGEN



Length mm	Height mm	Width mm	REF
315	140	260	<a href="#">111TP1597</a>

# USED ON BÄR CARGOLIFT



## TANKS & OIL RESERVOIRS

RÉSERVOIRS (D'HUILE) – TANKS & ÖLBEHÄLTER



Length mm	Height mm	Width mm	REF
245	147	150	<a href="#">111TP1598</a>



Length mm	Diameter mm	Volume l	REF
200	85	2	<a href="#">111TP8125</a>



Length mm	Diameter mm	Volume l	REF
305	85	2,5	<a href="#">111TP1599</a>



Length mm	Diameter mm	Volume l	REF
325	110	2,9	<a href="#">111TP1600</a>



Length mm	Diameter mm	Volume l	REF
560	110	5,4	<a href="#">111TP1601</a>



Length mm	Diameter mm	Volume l	REF
675	110	6,6	<a href="#">111TP1602</a>



Length mm	Diameter mm	Volume l	REF
895	110	8,9	<a href="#">111TP1603</a>



Length mm	Diameter mm	Volume l	REF
570	120	5,5	<a href="#">111TP1604</a>



Length mm	Diameter mm	Volume l	REF
360	120	3,5	<a href="#">111TP8124</a>

POWER PACKS & PARTS – GROUPE HYDRAULIQUE & ACCESSOIRES – AGGREGATE & ERSATZTEILE

# USED ON BÄR CARGOLIFT



POWER PACKS & PARTS - GROUPE HYDRAULIQUE & ACCESSOIRES - AGGREGATE & ERSATZTEILE

## FILTERS & BREATHERS

FILTRES & RENIFLARDS - FILTER & ENTLÜFTER



- Diameter: 63 mm
- 104 µ

**REF 111TP1605**



- Diameter: 63 mm
- 104 µ

**REF 111TP7738**



- Diameter: 37 mm
- Length: 43 mm

**REF 111TP1606**



- Diameter: 26/47,5 mm
- Thread: 3/4" BSP

**REF 111TP1607**



- Diameter: 21/42 mm
- Thread: 1/2" BSP

**REF 111TP8126**

## DRAIN PLUGS

BOUCHONS DE VIDANGE - ABLASSSCHRAUBEN



Thread: 3/8" BSP

**REF 111TP1608**

# USED ON BÄR CARGOLIFT



## ELECTRIC MOTORS

MOTEURS ÉLECTRIQUES - ELEKTROMOTOREN



Voltage	kW	Rotation	REF
12	0,8	<< CCW	<a href="#">111TP1611</a>
24	1,2	<< CCW	<a href="#">111TP1613</a>



Voltage	kW	Rotation	REF
12	2	<< CCW	<a href="#">111TP1612</a>
24	2	<< CCW	<a href="#">111TP1614</a>



Voltage	kW	Rotation	REF
12	1,7	CW >>	<a href="#">111TP8128</a>
24	2,2	CW >>	<a href="#">111TP1615</a>



Voltage	kW	Rotation	REF
12	1,5	CW >>	<a href="#">111TP8129</a>
24	2,2	CW >>	<a href="#">111TP1616</a>



Voltage	kW	Rotation	REF
24	2,2	CW >>	<a href="#">111TP1617</a>



Voltage	kW	Rotation	REF
24	3	CW >>	<a href="#">111TP1618</a>



Voltage	kW	Rotation	REF
12	2	<< CCW	<a href="#">111TP1619</a>
24	2	<< CCW	<a href="#">111TP1621</a>



Voltage	kW	Rotation	REF
24	2	CW >>	<a href="#">111TP1620</a>



Voltage	kW	Rotation	REF
24	2	<< CCW	<a href="#">111TP8130</a>

See chapter Universal parts on page 735 for more parts.

MOTORS, PUMPS & PARTS - MOTEURS, POMPES & ACCESSOIRES - MOTOREN, PUMPEN & ERSATZTEILE

# USED ON BÄR CARGOLIFT



MOTORS, PUMPS & PARTS - MOTEURS, POMPES & ACCESSOIRES - MOTOREN, PUMPEN & ERSATZTEILE

## HYDRAULIC PUMPS

POMPES HYDRAULIQUES - HYDRAULIKPUMPEN



CC	Rotation	REF
1,2	CW >>	<a href="#">111TP1622</a>
2	CW >>	<a href="#">111TP1623</a>
2,5	CW >>	<a href="#">111TP1624</a>
3,2	CW >>	<a href="#">111TP1625</a>



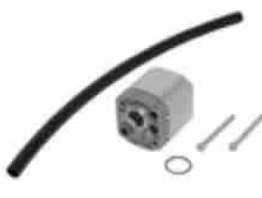
CC	Rotation	REF
1,2	<< CCW	<a href="#">111TP1626</a>
2	<< CCW	<a href="#">111TP1627</a>
2,5	<< CCW	<a href="#">111TP1628</a>



CC	Rotation	REF
1,2	CW >>	<a href="#">111TP1629</a>
2	CW >>	<a href="#">111TP1630</a>
2,5	CW >>	<a href="#">111TP1631</a>



CC	Rotation	REF
0,6	CW >>	<a href="#">111TP8131</a>



CC	Rotation	REF
0,8	CW >>	<a href="#">111TP1632</a>
1	CW >>	<a href="#">111TP1633</a>



CC	Rotation	REF
3	<< CCW	<a href="#">111TP1634</a>



CC	Rotation	REF
2	<< CCW	<a href="#">111TP1635</a>



CC	Rotation	REF
2	<< CCW	<a href="#">111TP1636</a>

# USED ON BÄR CARGOLIFT



## HYDRAULIC PUMPS

POMPES HYDRAULIQUES - HYDRAULIKPUMPEN



CC	Rotation	REF
1,2	<< CCW	<a href="#">111TP1637</a>



CC	Rotation	REF
1,2	<< CCW	<a href="#">111TP1638</a>

See chapter Universal parts on page 699 for more parts.

## ELECTRIC MOTORS WITH PUMP

MOTEURS ÉLECTRIQUES AVEC POMPE - ELEKTROMOTOREN MIT PUMPE



Voltage	kW	CC	REF
24	2	1,2	<a href="#">111TP1653</a>



Voltage	kW	CC	REF
24	2	2	<a href="#">111TP1654</a>



Voltage	kW	CC	REF
24	2,2	1,2	<a href="#">111TP1655</a>



Voltage	kW	CC	REF
24	3	3	<a href="#">111TP1656</a>

See chapter Universal parts on page 700 for more parts.

MOTORS, PUMPS & PARTS - MOTEURS, POMPES & ACCESSOIRES - MOTOREN, PUMPEN & ERSATZTEILE

# USED ON BÄR CARGOLIFT



MOTORS, PUMPS & PARTS - MOTEURS, POMPES & ACCESSOIRES - MOTOREN, PUMPEN & ERSATZTEILE

## SOLENOID SWITCHES/CONTACTORS

SOLÉNOÏDES/CONTACTEURS - MAGNETSCHALTER/SCHÜTZE

	Amperage	REF	
		12 V	24 V
	100	<a href="#">111TP1639</a>	<a href="#">111TP1640</a>
	100	<a href="#">112TP9813</a>	
	100	<a href="#">111TP1641</a>	<a href="#">111TP1642</a>
	150	<a href="#">111TP1643</a>	<a href="#">111TP1644</a>
	150	<a href="#">111TP1645</a>	<a href="#">111TP1646</a>
	150	<a href="#">112TP9814</a>	<a href="#">112TP9815</a>
	100	<a href="#">112TP9816</a>	

See chapter Universal parts on page 701 for more parts.



# USED ON BÄR CARGOLIFT



## COUPLERS

COUPLEURS - KUPPLUNGEN



Diameter mm	Height mm	REF
20	12	<a href="#">111TP1647</a>



Diameter mm	Height mm	REF
14	13	<a href="#">111TP1648</a>



Diameter mm	Height mm	REF
15	37	<a href="#">111TP1649</a>



Diameter mm	Height mm	REF
18	23	<a href="#">111TP8132</a>



Diameter mm	Height mm	REF
18	14,5	<a href="#">112TP9817</a>

See chapter Universal parts on page 702 for more parts.

MOTORS, PUMPS & PARTS - MOTEURS, POMPES & ACCESSOIRES - MOTOREN, PUMPEN & ERSATZTEILE

# USED ON BÄR CARGOLIFT



MOTORS, PUMPS & PARTS - MOTEURS, POMPES & ACCESSOIRES - MOTOREN, PUMPEN & ERSATZTEILE

## BRUSHES

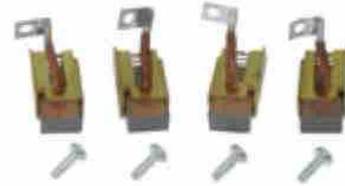
BALAIS - KOHLEBÜRSTEN



Dimensions: 12,5 x 7,3 x 19,2 mm

**REF 111TP1650** - Voltage: 12 V

**REF 111TP1651** - Voltage: 24 V



Dimensions: 15,8 x 8,9 x 15,8 mm

**REF 111TP1223** - Voltage: 24 V



Dimensions: 19,9 x 9,3 x 22 mm

**REF 111TP8133** - Voltage: 12 V



Dimensions: 9,9 x 9,3 x 22 mm

**REF 111TP1652** - Voltage: 12/24 V

## BEARINGS

ROULEMENTS - LAGER



Diameter mm	Height mm	REF
12/32	10	<b>111TP1657</b>
15/35	11	<b>111TP1658</b>

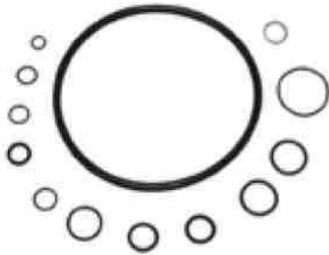
See chapter Universal parts on page 735 for more parts.

# USED ON BÄR CARGOLIFT



## SEAL KITS

KITS DE JOINTS - DICHTUNGSSÄTZE



### Contains:

- 1 x 6,35 mm
- 1 x 9,25 mm
- 1 x 9,5 mm
- 1 x 10 mm
- 1 x 10,6 mm
- 1 x 110,50 mm
- 1 x 12 mm
- 1 x 12,3 mm
- 1 x 16 mm
- 1 x 16,4 mm
- 1 x 28,3 mm

REF **111TP1659**

## GUMMY ELEMENT

ÉLÉMENT CAOUTCHOUC - GUMMIELEMENTE

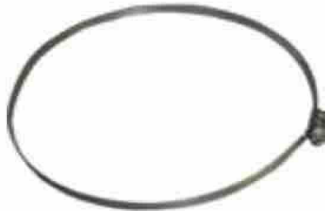


- Diameter: 80/94 mm
- Height: 40 mm

REF **111TP1660**

## CLAMPS

PINGES - KLAMMERN



Diameter mm	Height mm	REF
180	9	<b>111TP1661</b>

See chapter Universal parts on page 704 for more parts.

MOTORS, PUMPS & PARTS - MOTEURS, POMPES & ACCESSOIRES - MOTOREN, PUMPEN & ERSATZTEILE

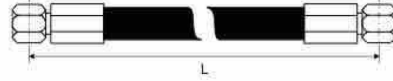
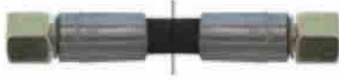
# USED ON BÄR CARGOLIFT



HOSES & FITTINGS - TUYAUX & RACCORDS - SCHLÄUCHE & KUPPLUNGEN

## HOSES

TUYAUX - SCHLÄUCHE



Hose diameter		Length mm	Fitting 1 mm	Fitting 2 mm	Info	REF
Inch	mm					
1/4	6,4	680	M16 x 1,5	M16 x 1,5	-40-100 °C	<a href="#">111TP1662</a>
1/4	6,4	750	M16 x 1,5	M16 x 1,5	-40-100 °C	<a href="#">111TP1663</a>
1/4	6,4	800	M16 x 1,5	M16 x 1,5	-40-100 °C	<a href="#">111TP1664</a>
1/4	6,4	900	M16 x 1,5	M16 x 1,5	-40-100 °C	<a href="#">111TP1665</a>
1/4	6,4	1150	M16 x 1,5	M16 x 1,5	-40-100 °C	<a href="#">111TP1666</a>
1/4	6,4	1500	M16 x 1,5	M16 x 1,5	-40-100 °C	<a href="#">111TP1667</a>
1/4	6,4	1650	M16 x 1,5	M16 x 1,5	-40-100 °C	<a href="#">111TP1668</a>
1/4	6,4	1800	M16 x 1,5	M16 x 1,5	-40-100 °C	<a href="#">111TP1669</a>
1/4	6,4	2000	M16 x 1,5	M16 x 1,5	-40-100 °C	<a href="#">111TP1671</a>
1/4	6,4	682	M18 x 1,5	M18 x 1,5	-40-100 °C	<a href="#">111TP1670</a>



Hose diameter		Length mm	Fitting 1 mm	Fitting 2 mm	Info	REF
Inch	mm					
8	4	700	MSFO - M12 x 1,5	MSFO 90S - M12 x 1,5	-40-100 °C	<a href="#">111TP1672</a>
8	4	800	MSFO - M12 x 1,5	MSFO 90S - M12 x 1,5	-40-100 °C	<a href="#">111TP1673</a>
8	4	900	MSFO - M12 x 1,5	MSFO 90S - M12 x 1,5	-40-100 °C	<a href="#">111TP1674</a>
8	4	930	MSFO - M12 x 1,5	MSFO 90S - M12 x 1,5	-40-100 °C	<a href="#">111TP1675</a>
8	4	1560	MSFO - M12 x 1,5	MSFO 90S - M12 x 1,5	-40-100 °C	<a href="#">111TP1676</a>
8	4	2260	MSFO - M12 x 1,5	MSFO 90S - M12 x 1,5	-40-100 °C	<a href="#">111TP1677</a>



Hose diameter		Length mm	Fitting 1 mm	Fitting 2 mm	Info	REF
Inch	mm					
2	5	520	MSFO - M12 x 1,5	MSFO - M12 x 1,5	-40-100 °C	<a href="#">111TP1678</a>

# USED ON BÄR CARGOLIFT



## HOSES

TUYAUX - SCHLÄUCHE



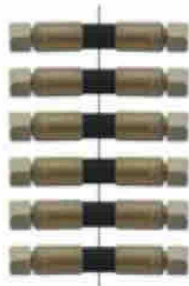
Hose diameter		Length mm	Fitting 1 mm	Fitting 2 mm	Info	REF
Inch	mm					
1/4	6,4	840	M16 x 1,5	M16 x 1,5	-40-100 °C	<a href="#">111TP1679</a>



Hose diameter		Length mm	Fitting 1 mm	Fitting 2 mm	Info	REF
Inch	mm					
1/4	6,4	900	M16 x 1,5	M16 x 1,5	-40-100 °C	<a href="#">111TP1680</a>
1/4	6,4	1000	M16 x 1,5	M16 x 1,5	-40-100 °C	<a href="#">111TP1681</a>
1/4	6,4	1270	M16 x 1,5	M16 x 1,5	-40-100 °C	<a href="#">111TP1682</a>
1/4	6,4	2150	M16 x 1,5	M16 x 1,5	-40-100 °C	<a href="#">111TP1683</a>

## HOSE SETS

KITS DE TUYAUX - SCHLAUCHSETS



Diameter: 1/4"

**Contains:**

- 2 x 1150 mm
- 4 x 900 mm

**REF [111TP1684](#)**

HOSES & FITTINGS - TUYAUX & RACCORDS - SCHLÄUCHE & KUPPLUNGEN

# USED ON BÄR CARGOLIFT



HOSES & FITTINGS – TUYAUX & RACCORDS – SCHLÄUCHE & KUPPLUNGEN

## FITTINGS

RACCORDS – KUPPLUNGEN



- Diameter: 1/4"
- Length: 40 mm
- Thread: M16 x 1,5 mm

**REF [111TP1685](#)**



Thread: M16 x 1,5 mm

**REF [111TP1686](#)**



- Diameter: 1/8" BSP/T
- Thread: M12 x 1,5 mm

**REF [111TP8135](#)**



- Length: 60 mm
- Thread: M16 x 1,5 mm


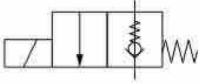

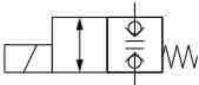

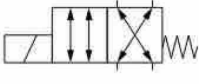
**REF [111TP8136](#)**

# USED ON BÄR CARGOLIFT




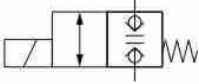

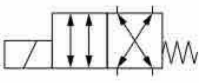

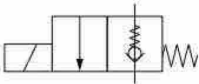
## SOLENOID VALVES

ÉLECTROVANNES - MAGNETVENTILE

	Type	Diameter mm	Thread mm	REF	
				12 V	24 V
 	2/2	15	M20 x 1,5	<a href="#">111TP1687</a>	<a href="#">111TP1688</a>
 	2/2	15	M20 x 1,5	<a href="#">111TP1689</a>	<a href="#">111TP1690</a>
 	4/2	13,8 - 15,3 - 16,8	M20 x 1,5	<a href="#">111TP1691</a>	<a href="#">111TP1692</a>

## CARTRIDGES

CARTOUCHES - PATRONEN

	Type	Diameter mm	Thread mm	REF
 	2/2	15	M20 x 1,5	<a href="#">111TP1693</a>
 	4/2	13,8 - 15,3 - 16,8	M20 x 1,5	<a href="#">111TP1694</a>
 	2/2	15	M20 x 1,5	<a href="#">111TP1695</a>

COILS & VALVES - BOBINES & SOUPAPES - SPULEN & VENTILE

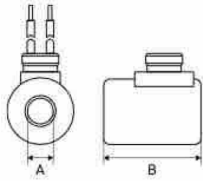
# USED ON BÄR CARGOLIFT



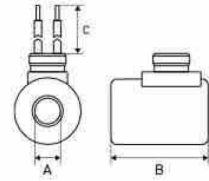
COILS & VALVES – BOBINES & SOUPAPES – SPULEN & VENTILE

## COILS

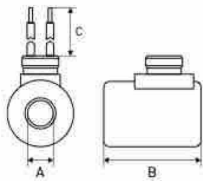
BOBINES – SPULEN



Voltage	A mm	B mm	Thread mm	REF
12	18	40	M27 x 1	<a href="#">111TP1696</a>
24	18	40	M27 x 1	<a href="#">111TP1697</a>



Voltage	A mm	B mm	C mm	REF
12	18	40	3000	<a href="#">111TP1698</a>
24	18	40	3000	<a href="#">111TP1699</a>



Voltage	A mm	B mm	C mm	REF
12	18	40	5500	<a href="#">111TP1700</a>
24	18	40	5500	<a href="#">111TP1701</a>

## VALVE BLOCKS

BOÎTIERS À SOUPAPES – VENTILBLÖCKE



- Length: 90 mm
- Height: 45 mm
- Width: 90 mm

**REF [111TP1609](#)**



- Length: 90 mm
- Height: 45 mm
- Width: 90 mm

**REF [111TP1610](#)**



- Length: 150 mm
- Height: 45 mm
- Width: 120 mm

**REF [111TP8127](#)**



# USED ON BÄR CARGOLIFT



## REGULATING VALVES

SOUPAPES DE RÉGULATION - REGELVENTILE



Diameter Inch	Info	REF
1/4	5,6 l/min	<a href="#">111TP1702</a>

## VALVES & SWITCHES

SOUPAPES & INTERRUPTEURS - VENTILE & SCHALTER



50-250 bar

**REF 111TP1704**



- Length: 310 mm
- NC 5 bar

**REF 111TP1705**



- Thread: M10
- 5 bar

**REF 111TP1706**



- Thread: 1/4" BSP
- 80G

**REF 111TP1707**



- Length: 63 mm
- Thread: M18 x 1,5 mm

**REF 111TP8139**



- Length: 104 mm
- Thread: M10
- X1A - SX1

**REF 111TP1708**

COILS & VALVES - BOBINES & SOUPAPES - SPULEN & VENTILE

# USED ON BÄR CARGOLIFT



COILS & VALVES – BOBINES & SOUPAPES – SPULEN & VENTILE

## SHUTTLE VALVES

VALVE À DEUX VOIES – WECHSELVENTIL



- Diameter: 1/4"
- 5 l/min

REF [112TP9853](#)



2 l/min

REF [112TP9854](#)



Diameter: 1/4"

REF [111TP1703](#)



3 l/min

REF [112TP9855](#)

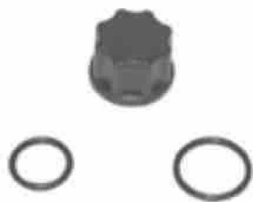


6,6 l/min

REF [112TP9856](#)

## NUTS

ÉCROUS – MUTTERN



Thread: M18 x 1,5 mm

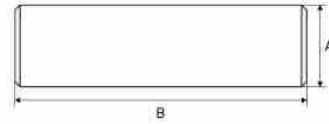
REF [111TP1709](#)

# USED ON BÄR CARGOLIFT



## PINS

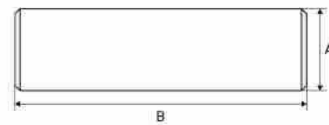
AXES - ACHSEN



A mm	B mm	Thread mm	REF
30	100	M10 x 1	<a href="#">111TP1710</a>
30	103	M10 x 1	<a href="#">111TP8141</a>
30	165	M10 x 1	<a href="#">111TP8142</a>
35	90	M10 x 1	<a href="#">111TP1711</a>
35	100	M10 x 1	<a href="#">111TP1712</a>
35	102	M10 x 1	<a href="#">111TP1713</a>
35	107	M10 x 1	<a href="#">111TP1714</a>



A mm	B mm	Thread mm	REF
30	103	M10 x 1	<a href="#">111TP8144</a>
35	110	M10 x 1	<a href="#">111TP1715</a>
35	112	M10 x 1	<a href="#">111TP1716</a>
35	127	M10 x 1	<a href="#">111TP1717</a>
40	130	M10 x 1	<a href="#">111TP1718</a>



A mm	B mm	REF
30	84	<a href="#">111TP1719</a>
35	129	<a href="#">111TP1720</a>
40	130	<a href="#">111TP1721</a>

PINS, BUSHINGS & ROLLERS - AXES, BAGUES & GALETS - ACHSEN, BUCHSEN & ROLLEN

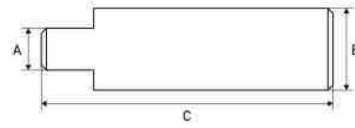
# USED ON BÄR CARGOLIFT



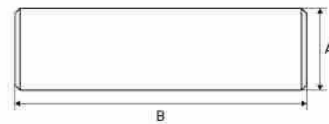
PINS, BUSHINGS & ROLLERS - AXES, BAGUES & GALETS - ACHSEN, BUCHSEN & ROLLEN

## PINS

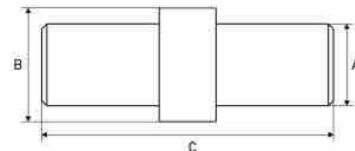
AXES - ACHSEN



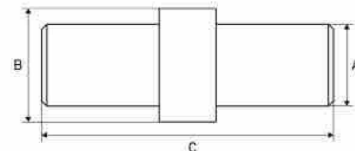
A mm	B mm	C mm	Thread mm	REF
30	35	141	M10 x 1	<a href="#">111TP1722</a>
30	35	145	M10 x 1	<a href="#">111TP1724</a>
30	35	156	M10 x 1	<a href="#">111TP1723</a>
30	40	175	M8 x 1	<a href="#">111TP8143</a>



A mm	B mm	REF
35	82	<a href="#">111TP1725</a>
40	44	<a href="#">111TP1726</a>
40	46	<a href="#">111TP1727</a>



A mm	B mm	C mm	REF
30	35	140	<a href="#">111TP8140</a>



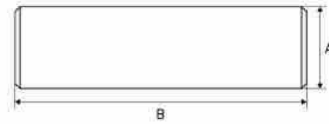
A mm	B mm	C mm	Thread mm	REF
30	35	155	M10 x 1	<a href="#">111TP1728</a>

# USED ON BÄR CARGOLIFT



## PINS

AXES - ACHSEN



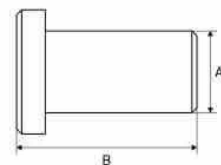
A mm	B mm	REF
30	120	<a href="#">111TP1729</a>
30	125	<a href="#">111TP1730</a>



A mm	B mm	Thread mm	REF
35	180	M10 x 1	<a href="#">111TP1731</a>



A mm	B mm	REF
35	135	<a href="#">111TP1732</a>



A mm	B mm	Thread mm	REF
35/50	233	M16 x 2	<a href="#">111TP1733</a>

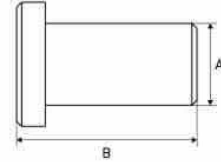
PINS, BUSHINGS & ROLLERS - AXES, BAGUES & GALETS - ACHSEN, BUCHSEN & ROLLEN

# USED ON BÄR CARGOLIFT

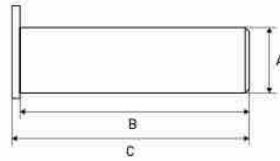


PINS, BUSHINGS & ROLLERS - AXES, BAGUES & GALETS - ACHSEN, BUCHSEN & ROLLEN

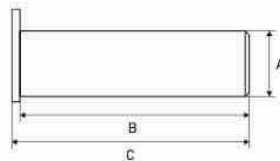
## PINS AXES - ACHSEN



A mm	B mm	Thread mm	REF
35/45	107	M6 x 1	111TP1734



A mm	B mm	REF
30	165	111TP1735
35	125	111TP1736
35	147	111TP1737
35	205	111TP1738



A mm	B mm	REF
30	80	111TP1739
30	139	111TP1740
30	170	111TP1741
35	86	111TP1742
35	172	111TP1743
40	90	111TP1744

# USED ON BÄR CARGOLIFT



## PIN SETS

KITS D'AXES - ACHSENSETS



**Contains:**

- 1 x  $\varnothing$  35 x 113 mm
- 1 x  $\varnothing$  40 x 129 mm

REF **111TP1745**



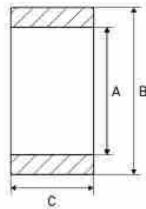
**Contains:**

- 4 x  $\varnothing$  40 x 46 mm
- 4 x  $\varnothing$  35 x 125 mm
- 2 x  $\varnothing$  35 x 95 mm
- 2 x  $\varnothing$  35 x 145 mm
- 2 x  $\varnothing$  35 x 110 mm
- 2 x  $\varnothing$  35 x 112 mm

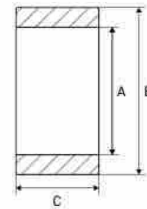
REF **111TP8146**

## PLATFORM ROLLERS

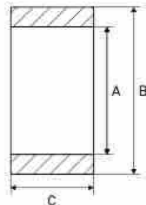
GALETS DE HAYON - PLATTFORMROLLEN



A mm	B mm	C mm	REF
10	80	30	<b>111TP1749</b>



A mm	B mm	C mm	REF
30,5	90	49	<b>111TP1750</b>



A mm	B mm	C mm	REF
30	80	50	<b>111TP1746</b>
30	100	50	<b>111TP1747</b>
35	80	46	<b>111TP1748</b>
45	100	20	<b>111TP5064</b>

PINS, BUSHINGS & ROLLERS - AXES, BAGUES & GALETS - ACHSEN, BUCHSEN & ROLLEN

# USED ON BÄR CARGOLIFT



PINS, BUSHINGS & ROLLERS – AXES, BAGUES & GALETS – ACHSEN, BUCHSEN & ROLLEN

## PLATFORM ROLLER SETS

KITS DE GALETS DE HAYON – PLATTFORMROLLENSETS



**Contains:**

- 2 x Ø 30 x 100 x 50 mm
- 2 x Ø 35 x 112 mm
- 2 x Ø 35 x 145 mm

REF [111TP1751](#)



**Contains:**

- 2 x Ø 30/90 x 45 mm
- 2 x Ø 30 x 139 mm

REF [111TP1752](#)



**Contains:**

- 3 x Ø 35/100 x 20 mm
- 1 x Ø 35 x 84
- 2 x Ø 35 x 180 mm

REF [111TP1753](#)



**Contains:**

- 2 x Ø 100 mm
- 1 x Ø 35 x 113 mm
- 2 x Ø 35 x 156 mm

REF [111TP8145](#)

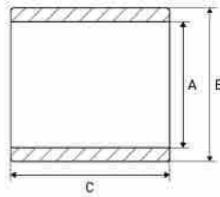


# USED ON BÄR CARGOLIFT

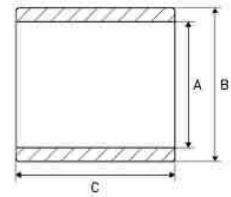


## BUSHINGS

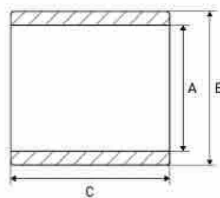
BAGUES - BUCHSEN



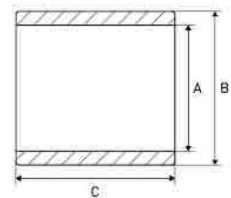
A mm	B mm	C mm	REF
30	35	50	<a href="#">111TP1754</a>
35	39	50	<a href="#">111TP8147</a>
35	42	50	<a href="#">111TP1755</a>



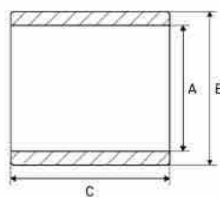
A mm	B mm	C mm	REF
30	35	40	<a href="#">111TP1756</a>
30	35	50	<a href="#">111TP1757</a>
30	35	65	<a href="#">111TP1758</a>
35	40	40	<a href="#">111TP1759</a>
35	40	50	<a href="#">111TP1760</a>
35	40	65	<a href="#">111TP1761</a>



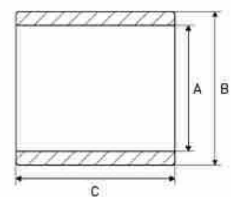
A mm	B mm	C mm	REF
40	45	80	<a href="#">111TP1762</a>



A mm	B mm	C mm	Info	REF
30	34	30	DX	<a href="#">111TP1763</a>
30	34	40	DX	<a href="#">112TP9852</a>
40	44	20	DX	<a href="#">111TP1764</a>
40	44	40	DX	<a href="#">111TP1765</a>



A mm	B mm	C mm	REF
30	36	40	<a href="#">111TP1766</a>
30	38	42	<a href="#">111TP8148</a>



A mm	B mm	C mm	REF
35	42	52,5	<a href="#">111TP1767</a>

See chapter Universal parts on page 705 for more parts.

PINS, BUSHINGS & ROLLERS - AXES, BAGUES & GALETS - ACHSEN, BUCHSEN & ROLLEN

# USED ON BÄR CARGOLIFT



PINS, BUSHINGS & ROLLERS - AXES, BAGUES & GALETS - ACHSEN, BUCHSEN & ROLLEN

## DISTANCE RINGS

BAGUES D'ÉCARTEMENT - ABSTANDSRINGE



- Diameter: 16/45/55 mm
- Thread: 21 mm

REF [111TP1770](#)



Mounting kit

REF [111TP8159](#)

## EYE BOLTS

BOULONS À CEIL - RINGSCHRAUBEN



Diameter mm	Length mm	REF
8	50	<a href="#">111TP8149</a>
8	70	<a href="#">111TP2795</a>
10	50	<a href="#">111TP1771</a>
12	60	<a href="#">111TP1772</a>

## GE BEARINGS

ROULEMENTS AUTO-ALIGNEURS - GELENKLAGER



- Diameter: 17/30 mm
- Thread: 14 mm

REF [111TP1768](#)



- Diameter: 25/42 mm
- Thread: 20 mm

REF [111TP1769](#)

# USED ON BÄR CARGOLIFT



## ROLL STOPS & PARTS

BUTÉES DE ROUES & ACCESSOIRES – ABROLLSICHERUNGEN & ERSATZTEILE



80 x 80 x 4 mm

**REF 111TP3662**



- Length: 2300 mm
- Height: 63 mm
- Width: 87 mm

**REF 111TP1802**



- Length: 849 mm
- Height: 17,5 mm
- Width: 82 mm

**REF 111TP1803**



- Length: 745 mm
- Height: 10 mm
- Width: 70 mm

**REF 111TP1804**



- Length: 800 mm
- Height: 10 mm
- Width: 92 mm

**REF 111TP8163**



Trolley stop RX

**REF 111TP1780**



- Diameter: 12 mm
- Length: 930 mm

**REF 111TP1781**



- Diameter: 12 mm
- Length: 47 mm
- Height: 22 mm

**REF 111TP8161**



- Diameter: 12 mm
- Length: 1100 mm

**REF 111TP8162**

MECHANICAL PARTS – PIÈCES MÉCANIQUES – MECHANISCHE ERSATZTEILE

# USED ON BÄR CARGOLIFT



MECHANICAL PARTS – PIÈCES MÉCANIQUES – MECHANISCHE ERSTATZTEILE

## SPRINGS & GAS SPRINGS

RESSORTS & VÉRINS À GAZ – FEDERN & GASDRUCKFEDERN



Diameter mm	Thickness mm	REF
18	2,3	<a href="#">111TP1782</a>



Diameter mm	Thickness mm	REF
19	3	<a href="#">111TP1783</a>



Diameter mm	Length mm	REF
11	23	<a href="#">112TP9851</a>



Diameter mm	Length mm	Info	REF
20	40	3000N	<a href="#">111TP1784</a>



Diameter mm	Length mm	Info	REF
11	1040	Right	<a href="#">111TP1785</a>



Diameter mm	Dimensions mm	REF
4	85 x 85	<a href="#">111TP3662</a>



Diameter mm	Length mm	REF
44,5	505	<a href="#">111TP8150</a>



Diameter mm	Length mm	REF
38	65	<a href="#">111TP8160</a>

See chapter Universal parts on page 707 for more parts.

# USED ON BÄR CARGOLIFT



## BUMPERS & BUFFERS

PARE-CHOCS & BUTOIRS - STOSSDÄMPFER & -PUFFER



- Diameter: 30 mm
- Length: 36 mm
- Thread: M8

**REF 111TP1786**

## SLIDER BLOCKS, ROLLERS & WEAR PLATES

BLOCS DE DÉFILEMENT, GALETS & PLAQUES D'USURE - GLEITBLÖCKE, LAUFROLLEN & VERSCHLEISSPLATTEN



- Length: 60 mm
- Thread: M16
- Width: 40 mm

**REF 111TP8151**



- Length: 135 mm
- Height: 20 mm
- Width: 60 mm

**REF 111TP8152**



- Length: 135 mm
- Height: 20 mm
- Width: 60 mm

**REF 111TP8153**

MECHANICAL PARTS - PIÈCES MÉCANIQUES - MECHANISCHE ERSTATZTEILE

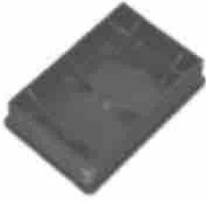
# USED ON BÄR CARGOLIFT



MECHANICAL PARTS – PIÈCES MÉCANIQUES – MECHANISCHE ERSTATZTEILE

## CAPS

BOUCHONS – DECKEL



- Length: 120 mm
- Height: 22 mm
- Width: 80 mm

**REF 111TP1787**



- Length: 175 mm
- Height: 40 mm
- Width: 175 mm

**REF 111TP1788**



- Length: 210 mm
- Height: 40 mm
- Width: 210 mm

**REF 111TP1789**



- REF 111TP1790** – Diameter: 113,5 mm
- REF 111TP1791** – Diameter: 114,3 mm
- REF 111TP1792** – Diameter: 127 mm



- REF 111TP1793** – Diameter: 40 mm
- REF 111TP1794** – Diameter: 80 mm



- Diameter: 30 mm
- Length: 126 mm
- Height: 50 mm
- Width: 115 mm

**REF 111TP8123**



- Length: 650 mm
- Height: 280 mm
- Width: 550 mm

**REF 111TP8154**



- Length: 160 mm
- Height: 105 mm
- Width: 155 mm

**REF 111TP8155**



Length: 395 mm

**REF 111TP8209**

See chapter Universal parts on page 707 for more parts.

# USED ON BÄR CARGOLIFT



## PLATFORM LOCKS

VERROUILLAGE DE PLATEFORME - PLATTFORMVERSCHLÜSSE



Length: 120 mm

REF [111TP1820](#)

## PLATFORM PARTS

PIÈCES DE PLATEFORME - PLATTFORMERSATZTEILE



- Length: 135 mm
- Height: 20 mm
- Width: 60 mm

REF [111TP1799](#)



- Length: 78 mm
- Height: 10 mm
- Width: 50 mm

REF [111TP1795](#)



- Diameter: 20 mm
- Height: 10 mm

REF [111TP1796](#)



- Holes: 4 x Ø 17 mm
- Length: 150 mm
- Height: 147 mm
- Width: 93 mm

REF [111TP1797](#)



- Holes: 6 x Ø 17 mm
- Length: 205 mm
- Height: 108 mm
- Width: 93 mm

REF [111TP1798](#)



- Length: 2770 mm
- Height: 10 mm
- Width: 28 mm

REF [111TP1800](#)

MECHANICAL PARTS - PIÈCES MÉCANIQUES - MECHANISCHE ERSTATZTEILE

# USED ON BÄR CARGOLIFT



MECHANICAL PARTS – PIÈCES MÉCANIQUES – MECHANISCHE ERSTATZTEILE

## PLATFORM PARTS

PIÈCES DE PLATEFORME – PLATTFORMERSATZTEILE



- Length: 2550 mm
- Height: 26 mm
- Width: 65 mm

**REF 111TP1801**



1

- Length: 1508 mm
- Height: 48 mm
- Width: 65 mm

2

1. **REF 111TP1806** – LH
2. **REF 111TP1805** – RH



1



2

- Holes: 17/52 mm

1. **REF 111TP1808** – LH
2. **REF 111TP1807** – RH



- Length: 1150 mm
- 1/2"

**REF 111TP1809**



1/2"

**REF 111TP1810**



BS

**REF 111TP1811**



- Diameter: 30 mm
- Length: 975 mm

**REF 111TP1812**



- Diameter: 20/40 mm
- Length: 75 mm

**REF 111TP1814**



- Diameter: 20/40 mm
- Length: 75 mm

**REF 111TP1815**



Length: 2810 mm

**REF 111TP1816**



# USED ON BÄR CARGOLIFT



## PLATFORM PARTS

PIÈCES DE PLATEFORME – PLATTFORMERSATZTEILE



Length: 2515 mm

**REF 111TP1817**



- Diameter: 6-12 mm
- Length: 85 mm
- Thread: M6 x 1 mm

**REF 111TP8156**



- Diameter: 4 x Ø 12 mm
- Length: 565 mm
- Height: 80 mm
- Width: 120 mm

**REF 111TP8157**



- Diameter: 30/46 mm
- Length: 43,5 mm

**REF 111TP8158**



- Length: 400 mm
- Width: 250 mm
- § 53b Abs, 5 StVZO
- TÜV/CE with certificate

**REF 111TP1319**



- Length: 400 mm
- Width: 250 mm
- § 53b Abs, 5 StVZO
- TÜV/CE with certificate

**REF 111TP1320**



Diameter: 30/46/75 mm

**REF 111TP1818**



- Length: 212 mm
- Height: 25 mm
- Width: 153 mm

**REF 111TP1819**

See chapter Universal parts on page 708 for more parts.

MECHANICAL PARTS – PIÈCES MÉCANIQUES – MECHANISCHE ERSTATZTEILE

# USED ON BÄR CARGOLIFT



MECHANICAL PARTS – PIÈCES MÉCANIQUES – MECHANISCHE ERSTATZTEILE

## GREASE FITTINGS & CAPS

RACCORDS DE GRAISSAGE & BOUCHONS – SCHMIERNIPPEL & SCHUTZKAPPEN



Type thread mm	Info	REF
M10 x 1	90°	<a href="#">111TP1822</a>



Type thread mm	Info	REF
M6 x 1	180°	<a href="#">111TP1821</a>



Type thread mm	Info	REF
M10 x 1	180°	<a href="#">111TP1823</a>



Diameter mm	REF
6	<a href="#">111TP1824</a>

See chapter Universal parts on page 710 for more parts.

# USED ON BÄR CARGOLIFT



## JOYSTICKS

LEVIERS DE COMMANDE - JOYSTICKS



R2

**REF 111TP1825**



L2

**REF 111TP1826**



R4

**REF 111TP1827**



L4

**REF 111TP1828**



Only housing

**REF 111TP1830**



Without contact block

**REF 111TP1829**



Two points

**REF 111TP1872**

SWITCHES & CONTROLLERS - INTERRUPTEURS & COMMANDES - SCHALTER & BEDIENUNGEN

# USED ON BÄR CARGOLIFT



SWITCHES & CONTROLLERS - INTERRUPTEURS & COMMANDES - SCHALTER & BEDIENUNGEN

## ROTARY/PUSH SWITCHES & PARTS

INTERRUPTEURS ROTATIFS/POUSSOIRS & ACCESSOIRES - DREH-/DRUCKSCHALTER & ERSATZTEILE



Voltage: 12/24 V

**REF 111TP1831**



- Voltage: 24 V
- S/S4

**REF 111TP1832**



**REF 111TP8168** - Voltage: 12 V

**REF 111TP1833** - Voltage: 24 V

# USED ON BÄR CARGOLIFT



## CONTACT ELEMENTS

BLOCS DE CONTACT - KONTAKTELEMENTE



11/12/23/24

**REF 111TP1853**



31/32/43/44

**REF 111TP1854**



11/12/23/24

**REF 111TP1855**



51/52/63/64

**REF 111TP1856**



Universal contact block

**REF 111TP8572**



31/32/43/44

**REF 111TP1852**

## LIMIT/MICRO SWITCHES

INTERRUPTEURS DE FIN DE COURSE/MICRORUPTEURS - END-/MIKROSCHALTER



Set

**REF 111TP1857**



IP65

**REF 111TP1858**

See chapter Universal parts on page 711 for more parts.

SWITCHES & CONTROLLERS - INTERRUPTEURS & COMMANDES - SCHALTER & BETRIENUNGEN

# USED ON BÄR CARGOLIFT



SWITCHES & CONTROLLERS - INTERRUPTEURS & COMMANDES - SCHALTER & BEDIENUNGEN

## MICRO SWITCHES WITH CABLE

MICRORUPTEURS AVEC CÂBLE - MIKROSCHALTER MIT KABEL



Voltage	Amperage	Length mm	Info	REF
250	5	500	IP66	<a href="#">111TP1868</a>
250	5	1500	IP66	<a href="#">111TP1869</a>
250	5	3500	IP66	<a href="#">111TP1870</a>

## SENSORS & SWITCHES

CAPTEURS & INTERRUPTEURS - SENSOREN & SCHALTER



- Voltage: 12/24 V
- Length: 2000 mm
- Thread: M12 x 38 mm

**REF 111TP1864**



- Voltage: 10/36 V
- Thread: M12 x 55 mm

**REF 111TP8176** - Length: 3000 mm

**REF 111TP1865** - Length: 6000 mm



- Length: 200 mm
- Width: 80 mm
- BS

**REF 111TP1866**



Length: 550 mm

**REF 111TP1867**



- Voltage: 12/24 V
- Length: 570 mm

**REF 111TP8177**



Length: 4100 mm

**REF 112TP9850**

# USED ON BÄR CARGOLIFT



## CONTROL BOXES & PARTS

BOÎTIERS DE CONTRÔLE & ACCESSOIRES – BEDIENKÄSTEN & ERSATZTEILE



Voltage: 12/24 V

**REF 111TP1860**



Voltage: 12/24 V

**REF 111TP1861**



Used on REF [111TP1861](#)

**REF 111TP1871**



Used on REF [111TP1861](#)

**REF 111TP8173**



Without key switch + jack leg

**REF 111TP8174**



Without key switch right

**REF 111TP8175**



With key switch

**REF 111TP1862**



- Length: 220 mm
- Height: 25 mm
- Width: 120 mm

**REF 111TP1863**



- Length: 220 mm
- Height: 90 mm
- Width: 120 mm
- CP240

**REF 111TP1859**

SWITCHES & CONTROLLERS – INTERRUPTEURS & COMMANDES – SCHALTER & BEDIENUNGEN

# USED ON BÄR CARGOLIFT



SWITCHES & CONTROLLERS - INTERRUPTEURS & COMMANDES - SCHALTER & BEDIENUNGEN

## CONTROLLERS

COMMANDES - BEDIENUNGEN

**HYDEM**



Operate your tail lift with our high-quality hand controls available in 2- or 3-button configurations.

### Your benefits:

- Maximum comfort, high productivity
- Unique ergonomic design
- Easy push system
- With magnet and ring for easy handling
- Rubber shock absorber
- Usable in cold and wet environments

### Specifications:

- Protection (IP): IP44 according to EN 60 529
- Contact type: Mafelec (push button)
- Max amperage: 10 A
- Operating temperature: -25 °C up to 60 °C
- Material: ABS plastic with rubber buffer
- Cable: polyurethane 3,5 metres working length

### Applications:

Tail lifts, winches, cranes to name a few

### Available colours:

Orange, yellow, green, red and blue

**Available in different colours and in 2- or 3-button configurations.  
Ask for your quantity discount. All models are equipped with Mafelec switches.**

### 2-button hand controls with cable and connector

Make	Colour	REF
Bär Cargolift	Green	<a href="#">111TP5190</a>

### 2-button hand controls without cable

Colour	REF
Orange	<a href="#">111TP5214</a>
Blue	<a href="#">111TP5215</a>
Red	<a href="#">111TP5216</a>
Yellow	<a href="#">111TP5217</a>
Green	<a href="#">111TP5218</a>

### 3-button hand controls without cable

Colour	REF
Blue	<a href="#">111TP5220</a>
Green	<a href="#">111TP5223</a>



# USED ON BÄR CARGOLIFT



## CONTROLLERS

COMMANDES - BEDIENUNGEN



2-button controller with cable & 7-pin connector

**REF 112TP6355**



- 2 x NO
- Mafelec switch

**REF 111TP8092**



- 1 x NO + 1 x NC
- Mafelec switch

**REF 111TP8093**



**REF 111TP8181** - 4 x NO, Mafelec  
**REF 111TP8182** - 4 x NO



**REF 111TP8183** - 2 x NO, Mafelec  
**REF 111TP8019** - 2 x NO

See chapter Universal parts on page 712 for more parts.

SWITCHES & CONTROLLERS - INTERRUPTEURS & COMMANDES - SCHALTER & BEDIENUNGEN

# USED ON BÄR CARGOLIFT



SWITCHES & CONTROLLERS - INTERRUPTEURS & COMMANDES - SCHALTER & BEDIENUNGEN

## FOOT CONTROLLERS & PARTS

COMMANDES AU PIED & ACCESSOIRES - FUSSSCHALTER & ERSATZTEILE



- Up
- H

**REF 111TP1834**



- Down
- S

**REF 111TP1835**



- Length: 1500 mm
- Up

**REF 111TP1836**



- Length: 1500 mm
- Down

**REF 111TP1837**



- Length: 500 mm
- Up

**REF 111TP1838**



- Length: 500 mm
- Down

**REF 111TP1839**



Diameter: 41 mm

**REF 111TP1840**



- Diameter: 38 mm
- Hole: 4 x Ø 3 mm

**REF 111TP1841**



- Diameter: 37 x 10 mm
- Thickness: 27 mm

**REF 111TP1842**



Diameter: 14,5/20 mm

**REF 111TP1843**

# USED ON BÄR CARGOLIFT



## FOOT CONTROLLERS & PARTS

COMMANDES AU PIED & ACCESSOIRES - FUSSSCHALTER & ERSATZTEILE



BC750, 751, 1000SX1

**REF 111TP1844**



- Length: 335 mm
- Width: 85 mm

**REF 111TP1845**



0-180°

**REF 111TP1846**



0-180°

**REF 111TP1847**



0-90°

**REF 111TP1848**



0-90°

**REF 111TP1849**



- 0-360°
- BC52, S4, R2T, R21

**REF 111TP8172**



- 0-360°
- BC H42

**REF 111TP8573**



- Length: 880 mm
- Width: 39 mm
- 2-pins

**REF 111TP1850**

SWITCHES & CONTROLLERS - INTERRUPTEURS & COMMANDES - SCHALTER & BETRIEBUNGEN

# USED ON BÄR CARGOLIFT



SWITCHES & CONTROLLERS - INTERRUPTEURS & COMMANDES - SCHALTER & BEDIENUNGEN

## VARIOUS CONTROLLER PARTS

DIVERSES PIÈCES DE COMMANDE - WEITERE BEDIENUNG-ERSATZTEILE



- Diameter: 29/14 mm
- Length: 52 mm
- Used on REF [111TP1860](#)

**REF 111TP1873**

# USED ON BÄR CARGOLIFT



## BATTERY CABLES

CÂBLES DE BATTERIE - BATTERIEKABEL



- Length: 12 000 mm
- Wire size: 25 mm<sup>2</sup>

1. **REF 111TP1874** – Colour: red
2. **REF 111TP1875** – Colour: black
3. **REF 111TP8179** – Kit REF 111TP1874 + 111TP1875



- Length: 1900 mm
- Wire size: 25 mm<sup>2</sup>

**REF 111TP1876**



- Length: 2000 mm
- Wire size: 25 mm<sup>2</sup>
- Negative

**REF 111TP1877**



- Length: 2000 mm
- Wire size: 25 mm<sup>2</sup>
- Positive

**REF 111TP1878**



- Length: 15 000 mm
- Complete

**REF 111TP1879**

See chapter Universal parts on page 717 for more parts.

CABLES & CONNECTORS - CÂBLES & CONNECTEURS - KABEL & STECKER

# USED ON BÄR CARGOLIFT



CABLES & CONNECTORS - CÂBLES & CONNECTEURS - KABEL & STECKER

## KOSTAL CABLES

CÂBLES KOSTAL - KOSTALKABEL



- Length: 4000 mm
- Thread: M24 x 1 mm/M27 x 1 mm

**REF 111TP1880**

## SPIRAL CABLES

CÂBLES SPIRALÉS - SPIRALKABEL



Diameter mm	Wire size mm <sup>2</sup>	REF
4000	4 x 6 + 3 x 1	<b>111TP1881</b>



Diameter mm	REF
3000	<b>111TP8691</b>



Diameter mm	Info	REF
950	Charging cable	<b>112TP9847</b>

See chapter Universal parts on page 718 for more parts.

# USED ON BÄR CARGOLIFT



## CABLES & PARTS

CÂBLES DE BATTERIE - KABEL & ERSATZTEILE



- Voltage: 12 V
- Thread: M24 x 12 mm

**REF 111TP1882**



- Voltage: 12 V
- Thread: M24 x 2 mm

**REF 111TP1883**



Wire size: 5 x 0,75 mm<sup>2</sup>

**REF 111TP1884**



Length: 450 mm

**REF 111TP1885**



- Length: 2700 mm
- Wire size: 8 x 1 mm<sup>2</sup>

**REF 111TP1886**



- Length: 2690 mm
- Wire size: 4 x 1,5 mm<sup>2</sup>

**REF 111TP1888**



Length: 2550 mm

**REF 111TP1889**



- Length: 2700 mm
- Wire size: 25 mm<sup>2</sup>

**REF 111TP1890**



- Length: 1500 mm
- Wire size: 7 x 0,75 mm<sup>2</sup>

**REF 111TP1887**



- Length: 2600 mm
- Wire size: 7 x 0,75 mm<sup>2</sup>

**REF 111TP1891**

CABLES & CONNECTORS - CÂBLES & CONNECTEURS - KABEL & STECKER

# USED ON BÄR CARGOLIFT



CABLES & CONNECTORS - CÂBLES & CONNECTEURS - KABEL & STECKER

## CABLES & PARTS

CÂBLES DE BATTERIE - KABEL & ERSATZTEILE



- Length: 2200 mm
- Wire size: 7 x 0,75 mm<sup>2</sup>

**REF 112TP9849**



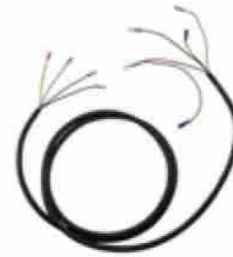
- Length: 643 mm
- Wire size: 4 x 1,5 mm<sup>2</sup>

**REF 111TP8186**



- Length: 2750 mm
- Wire size: 4 x 1,5 mm<sup>2</sup>

**REF 111TP8184**



- Length: 2750 mm
- Wire size: 8 x 1 mm<sup>2</sup>

**REF 111TP8187**



- Length: 3540 mm
- Wire size: 8 x 1 mm<sup>2</sup>

**REF 111TP8185**



- Length: 3040 mm
- Wire size: 7 x 0,75 mm<sup>2</sup>

**REF 111TP8188**



Length: 12 200 mm

**REF 111TP8189**



# USED ON BÄR CARGOLIFT



## CONNECTORS & PARTS

CONNECTEURS & ACCESSOIRES – STECKER & ERSATZTEILE



- 7-pole
- VEHH

**REF 111TP1892**



- 7-pole
- VEHH

**REF 111TP1893**



4-pole

**REF 111TP1894**



4-pole

**REF 111TP1895**



- 3-pole
- CEE

**REF 111TP9787**



- Length: 45 mm
- 7/8" UNS
- 18G

**REF 111TP1896**



- Length: 45 mm
- 7/8" UNS
- 18G

**REF 111TP1897**



- Wire size: 25 mm<sup>2</sup>
- Female

**REF 111TP1898**



- Wire size: 25 mm<sup>2</sup>
- Male

**REF 111TP8192**

See chapter Universal parts on page 719 for more parts.

CABLES & CONNECTORS – Câbles & Connecteurs – Kabel & Stecker

# USED ON BÄR CARGOLIFT



ELECTRICAL PARTS – PIÈCES ÉLECTRIQUES – ELEKTRISCHE ERSATZTEILE

## FLASHER LIGHTS & PARTS

LAMPES TORCHES & ACCESSOIRES – BLINKLEUCHTEN & ERSATZTEILE



Wattage: 5 W

**REF 111TP1899** – Voltage: 12 V

**REF 111TP1900** – Voltage: 24 V



- Length: 180 mm
- LED

**REF 111TP1901** – Voltage: 12 V

**REF 111TP1902** – Voltage: 24 V



- Voltage: 12 V
- Wattage: 4 W
- Length: 2850 mm
- LED

**REF 111TP1903**



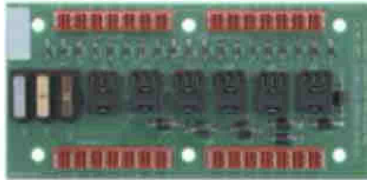
- Voltage: 24 V
- Wattage: 8 W
- Length: 180 mm
- LED

**REF 111TP1904**

See chapter Universal parts on page 725 for more parts.

## PRINTED CIRCUIT BOARDS/CONTROLLERS

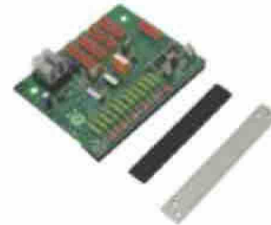
CIRCUITS IMPRIMÉS/COMMANDES – LEITERPLATTEN/BEDIENUNGEN



**REF 111TP8196** – Voltage: 12/24 V – Without relay

**REF 111TP1912** – Voltage: 12 V

**REF 111TP1905** – Voltage: 24 V



**REF 111TP1906** – Voltage: 24 V



**REF 111TP1910** – Voltage: 12 V

**REF 111TP1907** – Voltage: 24 V



**REF 111TP1909** – Voltage: 24 V

# USED ON BÄR CARGOLIFT



## PRINTED CIRCUIT BOARDS/CONTROLLERS

CIRCUITS IMPRIMÉS/COMMANDES - LEITERPLATTEN/BEDIENUNGEN



**REF 111TP1911** - Voltage: 12 V  
**REF 111TP1908** - Voltage: 24 V



**REF 111TP8575** - Voltage: 12 V  
**REF 111TP8198** - Voltage: 24 V



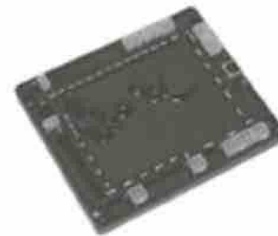
**REF 111TP1913** - Voltage: 12/24 V



**REF 111TP8197** - Voltage: 12/24 V



**REF 111TP8576** - Voltage: 12 V  
**REF 111TP1914** - Voltage: 24 V



**REF 111TP1915** - EBCMINI (without software)  
**REF 111TP8577** - EBCMINI (with software)



**REF 111TP1948** - EBCMAXI (without software)  
**REF 111TP8578** - EBCMAXI (with software)

ELECTRICAL PARTS - PIÈCES ÉLECTRIQUES - ELEKTRISCHE ERSATZTEILE

# USED ON BÄR CARGOLIFT



ELECTRICAL PARTS - PIÈCES ÉLECTRIQUES - ELEKTRISCHE ERSATZTEILE

## CABLE SHOES & BATTERY CLAMPS

CONNECTEURS & PINCES DE BATTERIE - KABELSCHUHE & BATTERIEKLAMMERN



Diameter mm	Length mm	Wire size mm <sup>2</sup>	REF
6	39	25	<a href="#">111TP1919</a>
8	32	25	<a href="#">111TP1920</a>
10	37	25	<a href="#">111TP1921</a>

## RELAYS

RELAIS - RELAIS



Voltage	Amperage	Info	REF
12	20/30	NO/NC	<a href="#">111TP1916</a>
24	10/20	NO/NC	<a href="#">111TP1917</a>



Voltage	Amperage	REF
12	50	<a href="#">111TP1918</a>
24	70	<a href="#">111TP8579</a>

See chapter Universal parts on page 727 for more parts.

# USED ON BÄR CARGOLIFT



## FUSES

FUSIBLES - SICHERUNGEN



DIN 72581/5

Amperage	REF
50	<a href="#">111TP1922</a>
75	<a href="#">111TP1923</a>
100	<a href="#">111TP1924</a>
150	<a href="#">111TP1925</a>
200	<a href="#">111TP1926</a>
250	<a href="#">111TP1927</a>



Amperage	REF
50	<a href="#">111TP8200</a>



Amperage	REF
50	<a href="#">111TP1928</a>



Amperage	REF
100	<a href="#">111TP1929</a>



Amperage	REF
150	<a href="#">111TP1930</a>



Amperage	REF
150	<a href="#">111TP8201</a>



Amperage	REF
200	<a href="#">111TP1931</a>



Amperage	REF
250	<a href="#">111TP1932</a>

See chapter Universal parts on page 728 for more parts.

ELECTRICAL PARTS - PIÈCES ÉLECTRIQUES - ELEKTRISCHE ERSATZTEILE

# USED ON BÄR CARGOLIFT



ELECTRICAL PARTS - PIÈCES ÉLECTRIQUES - ELEKTRISCHE ERSATZTEILE

## FUSE HOLDERS & PARTS

PORTE-FUSIBLES & ACCESSOIRES - SICHERUNGSHALTER & ERSATZTEILE



Mega

**REF 112TP9848**



Thread: M8

**REF 111TP1933**



Thread: M8

**REF 111TP8202**



- Amperage: max 20 A
- DIN 72581/med

**REF 111TP1934**

See chapter Universal parts on page 732 for more parts.

# USED ON BÄR CARGOLIFT



## VARIOUS ELECTRICAL PARTS

DIVERSES PIÈCES ÉLECTRIQUES - WEITERE ELEKTRISCHE ERSATZTEILE



**REF 111TP1935** - PG9  
**REF 111TP1936** - PG11  
**REF 111TP1937** - PG13,5



- Length: 55 mm
- Height: 15 mm
- Width: 3 mm

**REF 111TP1938**



- Length: 120 mm
- Height: 40 mm
- Width: 100 mm

**REF 111TP1939**



- Length: 140 mm
- Height: 50 mm
- Width: 140 mm
- 8-pole

**REF 111TP1940**



- Length: 145 mm
- Height: 56 mm
- Width: 136 mm
- Fuse cover

**REF 111TP8204**

ELECTRICAL PARTS - PIÈCES ÉLECTRIQUES - ELEKTRISCHE ERSATZTEILE

# USED ON BÄR CARGOLIFT



VARIOUS PARTS - DIVERSES PIÈCES - VERSCHIEDENE ERSATZTEILE

## BATTERY COVERS/HOUSINGS

COUVERCLES/LOGEMENTS BATTERIE - BATTERIEKÄSTEN/-DECKEL



- Length: 710 mm
- Height: 270 mm
- Width: 560 mm

**REF 111TP1941**



- Length: 710 mm
- Height: 270 mm
- Width: 640 mm

**REF 111TP1942**



- Length: 645 mm
- Height: 260 mm
- Width: 630 mm

**REF 111TP1943**



- Length: 690 mm
- Height: 260 mm
- Width: 620 mm

**REF 111TP8205**



# USED ON BÄR CARGOLIFT



## DECALS

AUTOCOLLANTS - AUFKLEBER

<ul style="list-style-type: none"> <li>Length: 160 mm</li> <li>Width: 75 mm</li> </ul> <p><b>REF 111TP1944</b></p>	<ul style="list-style-type: none"> <li>Length: 212 mm</li> <li>Width: 112 mm</li> <li>S4-S2</li> </ul> <p><b>REF 111TP1945</b></p>
<ul style="list-style-type: none"> <li>Length: 212 mm</li> <li>Width: 112 mm</li> </ul> <p><b>REF 111TP1946</b></p>	<ul style="list-style-type: none"> <li>Length: 212 mm</li> <li>Width: 112 mm</li> <li>R-42</li> </ul> <p><b>REF 111TP1947</b></p>
<ul style="list-style-type: none"> <li>Length: 100 mm</li> <li>Width: 120 mm</li> <li>Metal</li> </ul> <p><b>REF 111TP8207</b></p>	<ul style="list-style-type: none"> <li>Length: 70 mm</li> <li>Width: 65 mm</li> </ul> <p><b>REF 111TP8208</b></p>

See chapter Universal parts on page 735 for more parts.

VARIOUS PARTS - DIVERSES PIÈCES - VERSCHIEDENE ERSATZTEILE

# USED ON BÄR CARGOLIFT



NOTES – NOTIZEN

A large area of horizontal dotted lines for taking notes.