

**USED ON**  
**BEHRENS EUROLIFT**

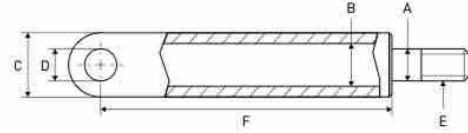
# USED ON BEHRENS EUROLIFT



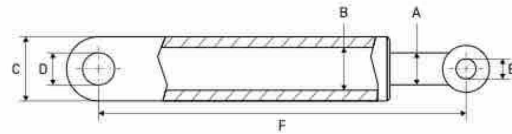
CYLINDERS – VÉRINS/CYLINDRES – ZYLINDER

## TILT CYLINDERS

VÉRIN D'INCLINAISON – SCHLISSZYLINDER



A mm	B mm	C mm	D mm	E mm	F mm	Weight kg	REF	
							Cylinder	Seal kit
45	70	85	30	M36 - Ø 45	500	1000/1500/2000	111TP1949	111TP9367



A mm	B mm	C mm	D mm	E mm	F mm	Weight kg	REF	
							Cylinder	Seal kit
50	55	65	30	30	480	1000/1500/2000	111TP1950	111TP9368
50	55	65	30	30	650	1000/1500/2000	111TP5147	111TP9368

## PRESSURE EXCHANGERS

ÉCHANGERS DE PRESSION – DRUCKÜBERSETZER



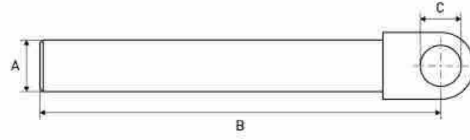
Diameter mm	REF	
	Cylinder	Seal kit
50/70	111TP8212	111TP8435

# USED ON BEHRENS EUROLIFT



## PISTON RODS

TIGES DE PISTON - KOLBENSTANGEN



A mm	B mm	C mm	REF
40	M34	M36	<a href="#">111TP1186</a>

## SEAL KITS

KITS DE JOINTS - DICHTUNGSSÄTZE



Diameter: 45/70 mm

REF [111TP1953](#)



Diameter: 50/60 mm

REF [111TP1954](#)



Diameter: 60/70 mm

REF [111TP8213](#)

CYLINDER PARTS - PIÈCES DE CYLINDRE - ZYLINDER-ERSATZTEILE

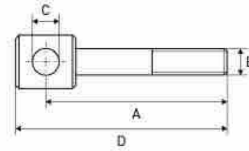
# USED ON BEHRENS EUROLIFT



CYLINDER PARTS – PIÈCES DE CYLINDRE – ZYLINDER-ERSATZTEILE

## ROD ENDS

ROTULES – GELENKKÖPFE



A	B	C	D	REF
mm	mm	mm	mm	
125	M36	30	155	<a href="#">111TP1955</a>
305	M36	30	336	<a href="#">111TP1956</a>

## PROTECTIVE COVERS

HOUSSE DE PROTECTION – SCHUTZROCHRE



Diameter		Length	REF	
A	B	C	Cover	Clamp
mm	mm	mm		
45	85	320	<a href="#">111TP8215</a>	<a href="#">111TP4916</a>
50	70	315	<a href="#">111TP8216</a>	<a href="#">111TP4916</a>
50	70	455	<a href="#">111TP8217</a>	<a href="#">111TP4916</a>

# USED ON BEHRENS EUROLIFT



## COVERS

COUVERCLES - ABDECKUNGEN



Length mm	Height mm	Width mm	REF
456	195	425	<b>111TP8218</b>



Length mm	Height mm	Width mm	REF
420	345	345	<b>111TP3441</b>

## TANKS & OIL RESERVOIRS

RÉSERVOIRS (D'HUILE) - TANKS & ÖLBEHÄLTER



Diameter mm	Volume l	REF
110	6,8	<b>111TP1957</b>



Length mm	Height mm	Width mm	REF
245	145	150	<b>111TP8220</b>

POWER PACKS & PARTS - GROUPE HYDRAULIQUE & ACCESSOIRES - AGGREGATE & ERSATZTEILE

# USED ON BEHRENS EUROLIFT



MOTORS, PUMPS & PARTS - MOTEURS, POMPES & ACCESSOIRES - MOTOREN, PUMPEN & ERSATZTEILE

## HYDRAULIC PUMPS

POMPES HYDRAULIQUES - HYDRAULIKPUMPEN



CC	Rotation	REF
1,7	<< CCW	<b>111TP1958</b>



CC	Rotation	REF
1	CW >>	<b>111TP1959</b>



CC	Rotation	REF
1,6	<< CCW	<b>111TP8221</b>

See chapter Universal parts on page 699 for more parts.

# USED ON BEHRENS EUROLIFT



## HOSES

TUYAUX - SCHLÄUCHE



Hose diameter		Length mm	Fitting 1 mm	Fitting 2 mm	Info	REF
Inch	mm					
1/4	6,4	630	M16 x 1,5 mm	M16 x 1,5 mm	-40-100 °C	<b>111TP1960</b>

HOSES & FITTINGS - TUYAUX & RACCORDS - SCHLÄUCHE & KUPPLUNGEN

**USED ON BEHRENS EUROLIFT**

COILS &amp; VALVES – BOBINES &amp; SOUPAPES – SPULEN &amp; VENTILE

**VALVE BLOCKS**

BOÎTIERS À SOUPAPES – STEUERBLÖCKE

**REF 111TP1961** – Voltage: 12 V**REF 111TP1962** – Voltage: 24 V

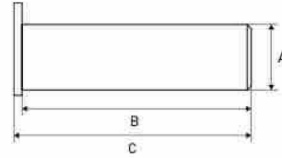


# USED ON BEHRENS EUROLIFT



## PINS

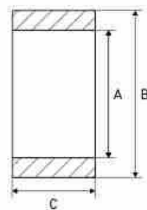
AXES - ACHSEN



A mm	B mm	Thread mm	REF
30	55	M8 x 1	<a href="#">111TP8222</a>
30	65	M8 x 1	<a href="#">111TP1963</a>
30	112	M8 x 1	<a href="#">111TP1964</a>
30	128	M8 x 1	<a href="#">111TP1965</a>
30	153	M8 x 1	<a href="#">111TP1967</a>
40	65	M8 x 1	<a href="#">111TP1966</a>

## PLATFORM ROLLERS

GALETS DE HAYON - PLATTFORMROLLEN



A mm	B mm	C mm	REF
30	90	45	<a href="#">111TP1968</a>

## BUSHINGS

BAGUES - BUCHSEN



Diameter mm	REF
80	<a href="#">111TP8223</a>



A mm	B mm	C mm	Info	REF
30	34	30	DX	<a href="#">111TP1969</a>
40	44	30	DX	<a href="#">111TP1970</a>

See chapter Universal parts on page 705 for more parts.

PINS, BUSHINGS & ROLLERS - AXES, BAGUES & GALETS - ACHSEN, BUCHSEN & ROLLEN

# USED ON BEHRENS EUROLIFT



MECHANICAL PARTS – PIÈCES MÉCANIQUES – MECHANISCHE ERSTATZTEILE

## SPRINGS & GAS SPRINGS

RESSORTS & VÉRINS À GAZ – FEDERN & GASDRUCKFEDERN



Length mm	Width mm	Thickness mm	REF
132	64	4	<a href="#">111TP8224</a>



Diameter mm	Length mm	REF
70	172	<a href="#">111TP8225</a>

See chapter Universal parts on page 707 for more parts.

## PLATFORM PARTS

PIÈCES DE PLATEFORME – PLATTFORMERSATZTEILE



- Length: 400 mm
- Width: 250 mm
- § 53b Abs. 5 StVZO
- TÜV/CE with certificate

**REF 111TP1971**



- Length: 400 mm
- Width: 250 mm
- § 53b Abs. 5 StVZO
- TÜV/CE with certificate

**REF 111TP1320**

See chapter Universal parts on page 708 for more parts.

# USED ON BEHRENS EUROLIFT



## CONTACT ELEMENTS

BLOCS DE CONTACT - KONTAKTELEMENTE



1 x NO

**REF 111TP1976**

## SENSORS & SWITCHES

CAPTEURS & INTERRUPTEURS - SENSOREN & SCHALTER



- Diameter: 18 mm
- Voltage: 12/24 V
- Length: 100 mm

**REF 111TP1977**



- Diameter: 25 mm
- Voltage: 12/24 V
- Length: 100 mm

**REF 111TP1978**

SWITCHES & CONTROLLERS - INTERRUPTEURS & COMMANDES - SCHALTER & BEDIENUNGEN

# USED ON BEHRENS EUROLIFT



SWITCHES & CONTROLLERS - INTERRUPTEURS & COMMANDES - SCHALTER & BEDIENUNGEN

## FOOT CONTROLLERS & PARTS

COMMANDES AU PIED & ACCESSOIRES - FUSSSCHALTER & ERSATZTEILE



Diameter: 30 mm

**REF 111TP1972**



Diameter: 30 mm

**REF 111TP1973**



Diameter: 40 mm

**REF 111TP1974**



Diameter: 40 mm

**REF 111TP1975**



Length: 2100 mm

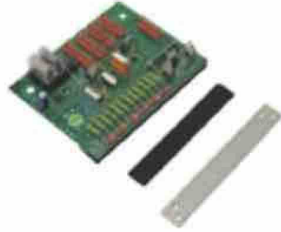
**REF 111TP8228**

# USED ON BEHRENS EUROLIFT



## PRINTED CIRCUIT BOARDS/CONTROLLERS

CIRCUITS IMPRIMÉS/COMMANDES - LEITERPLATTEN/BEDIENUNGEN



Voltage: 24 V

**REF 111TP1979**

## FUSES

FUSIBLES - SICHERUNGEN



DIN 72581/5

Amperage	REF
175	<b>111TP1980</b>
200	<b>111TP1981</b>



DIN 43560/1

Amperage	REF
175	<b>111TP1982</b>
225	<b>111TP1983</b>

See chapter Universal parts on page 728 for more parts.

## FUSE HOLDERS & PARTS

PORTE-FUSIBLES & ACCESSOIRES - SICHERUNGSHALTER & ERSATZTEILE



Thread: M8

**REF 111TP1984**

See chapter Universal parts on page 732 for more parts.

ELECTRICAL PARTS - PIÈCES ÉLECTRIQUES - ELEKTRISCHE ERSATZTEILE

# USED ON BEHRENS EUROLIFT



NOTES – NOTIZEN

A large area of horizontal dotted lines for taking notes.