

**USED ON**  
**DHOLLANDIA**

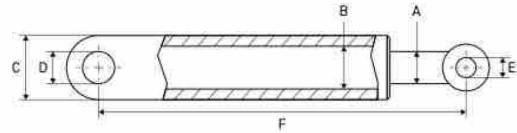
# USED ON DHOLLANDIA



CYLINDERS – VÉRINS/CYLINDRES – ZYLINDER

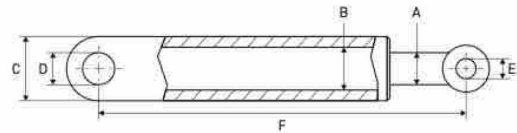
## LIFT CYLINDERS

VÉRINS DE LEVAGE – HUBZYLINDER



OK180

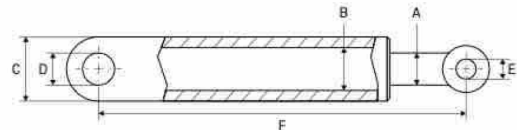
A mm	B mm	C mm	D mm	E mm	F mm	Info	REF	
							Cylinder	Seal kit
35	50	58	25	21	405	Left	111TP2207	111TP9472
35	50	58	25	21	405	Right	112TP9907	111TP9472



**HYDEM**

Left/right – CH14

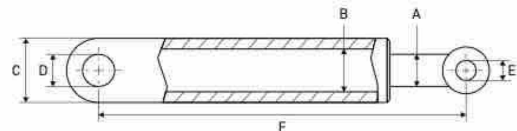
A mm	B mm	C mm	D mm	E mm	F mm	REF	REF	
							Cylinder	Seal kit
40	70	80	30	M33	590	111TP2208	111TP2285	



**HYDEM**

Left/right – CH1401

A mm	B mm	C mm	D mm	E mm	F mm	REF	REF	
							Cylinder	Seal kit
40	60	70	30	M33	560	111TP2209	111TP9821	



CH28 .050.30.0250.L

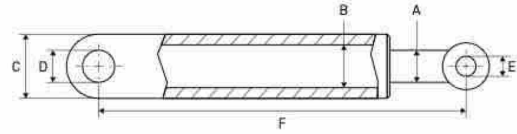
A mm	B mm	C mm	D mm	F mm	REF	REF	
						Cylinder	Seal kit
30	50	58	20	410	111TP8297	111TP9473	

# USED ON DHOLLANDIA



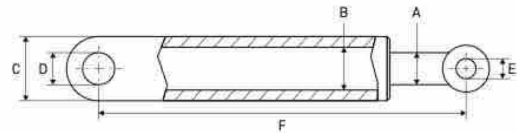
## LIFT CYLINDERS

VÉRINS DE LEVAGE - HUBZYLINDER



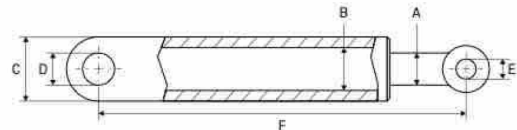
CH28.050.30.0250.R

A mm	B mm	C mm	D mm	F mm	REF	
					Cylinder	Seal kit
30	50	58	20	410	111TP9429	111TP9473



CH28.050.30.0295DL/L  
Left

A mm	B mm	C mm	D mm	E mm	F mm	REF	
						Cylinder	Seal kit
30	50	60	25	27/30	530	111TP2213	111TP2272



CH28.050.30.0295DL/R  
Right

A mm	B mm	C mm	D mm	E mm	F mm	REF	
						Cylinder	Seal kit
30	50	60	25	27/30	590	111TP2214	111TP2272

CYLINDERS - VÉRINS/CYLINDRES - ZYLINDER

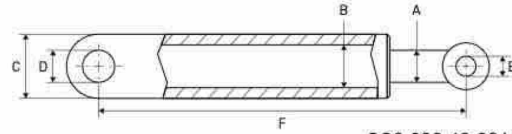
# USED ON DHOLLANDIA



CYLINDERS – VÉRINS/CYLINDRES – ZYLINDER

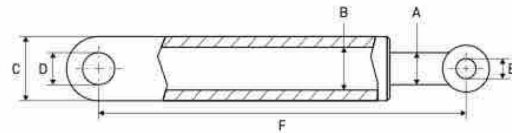
## TILT CYLINDERS

VÉRIN D'INCLINAISON – SCHLISSZYLINDER



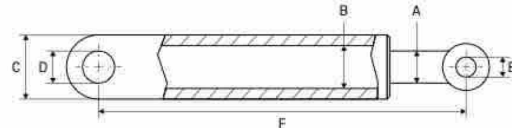
SC8.080.40.236.D.R  
DH-LM 1500/2000  
Right

A mm	B mm	C mm	D mm	E mm	F mm	REF Cylinder	Seal kit
40	80	90	30	M49 x 2	385	111TP2215	111TP9474



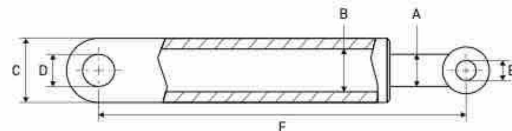
SKS266 SC8 – DH-LM 1500/2000

A mm	B mm	C mm	D mm	E mm	F mm	REF Cylinder	Seal kit
40	80	90	30	M49 x 2	412	111TP2216	111TP9474



HYDEM version, universal for left and right side  
CS3801  
CS38.070.35.0070R

A mm	B mm	C mm	D mm	E mm	F mm	REF Cylinder
35	70	80	30	M30	198	111TP2218



SC10 – DH-LM 1500/2000/2500

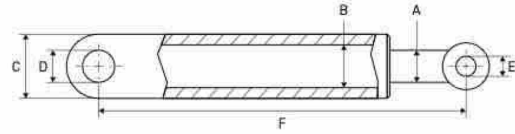
A mm	B mm	C mm	D mm	E mm	F mm	REF Cylinder	Seal kit
40	70	90	30	Ø 37/40	195	111TP2219	111TP8305

# USED ON DHOLLANDIA



## TILT CYLINDERS

VÉRIN D'INCLINAISON - SCHLISSZYLINDER



CS10.070.40.0070 DA

A mm	B mm	C mm	D mm	E mm	F mm	Info	REF	
							Cylinder	Seal kit
40	70	90	30	Ø 37/40	195	M14 x 180 SC10 EDS - DH-LM 1500/2000/2500	<a href="#">111TP2221</a>	<a href="#">111TP8305</a>
						M14 x 150 mm SC10 EDS DH-LM 1500/2000/2500	<a href="#">111TP2220</a>	<a href="#">111TP8305</a>
						M14 x 150 mm DH-LM 1500/2000/2500 HYDEM version, only 1 extension (instead of spacer + extension)	<a href="#">111TP9431</a>	<a href="#">111TP9307</a>

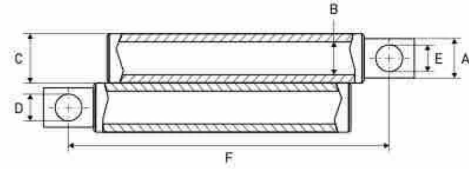
CYLINDERS - VÉRINS/CYLINDRES - ZYLINDER

# USED ON DHOLLANDIA



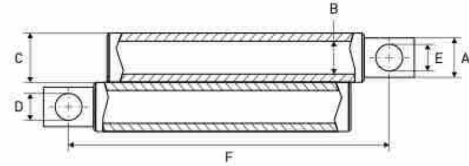
CYLINDERS – VÉRINS/CYLINDRES – ZYLINDER

## RETRACTION CYLINDERS VÉRINS DE RÉTRACTION – ZEICHZYLINDER



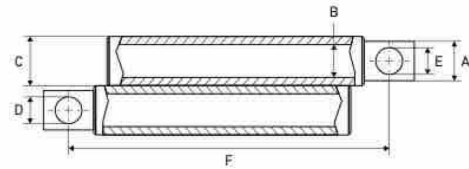
CAD07.050.35.1100

A mm	B mm	C mm	D mm	E mm	F mm	Info	REF	
							Cylinder	Seal kit
35	50	60	17	17	729	With metal pipes	111TP2222	111TP9475
						HYDEM version, with hydraulic hoses	111TP8558	111TP9820



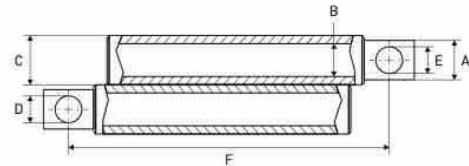
CAD07.050.35.1300

A mm	B mm	C mm	D mm	E mm	F mm	Info	REF	
							Cylinder	Seal kit
35	50	60	17	17	829	DKC 1300 With metal pipes	111TP2223	111TP9475
						HYDEM version, with hydraulic hoses	111TP8559	111TP9820



CAD13.040.30.1100

A mm	B mm	C mm	D mm	E mm	F mm	Info	REF	
							Cylinder	Seal kit
30	40	50	17	17	729	DKB 1100 With metal pipes	111TP8299	111TP9476
						HYDEM version, with hydraulic hoses	111TP8298	111TP9476



CAD13.040.30.1300

A mm	B mm	C mm	D mm	E mm	F mm	Info	REF	
							Cylinder	Seal kit
30	40	50	17	17	829		111TP8300	111TP9476

# USED ON DHOLLANDIA



## PRESSURE EXCHANGERS

ÉCHANGERS DE PRESSION - DRUCKÜBERSETZER



Fig	Diameter mm	Info	REF
1	80/115	GS 100-80	<a href="#">111TP2226</a>
2	80/116	GS 100-80	<a href="#">111TP8301</a>
3	80/120	GS 120-80	<a href="#">111TP2224</a>
4	80/140	GS 140-80	<a href="#">111TP2225</a>

CYLINDERS - VÉRINS/CYLINDRES - ZYLINDER

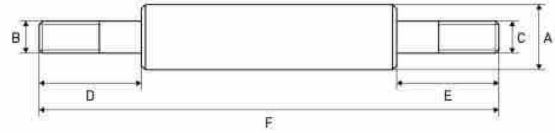
# USED ON DHOLLANDIA



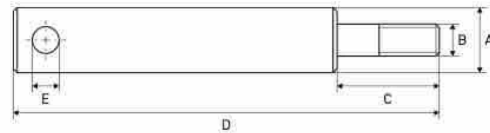
CYLINDER PARTS - PIÈCES DE CYLINDRE - ZYLINDER-ERSATZTEILE

## PISTON RODS

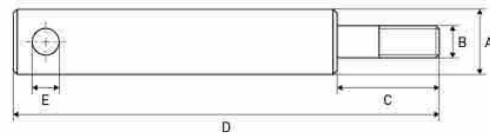
TIGES DE PISTON - KOLBENSTANGEN



A mm	B mm	C mm	D mm	E mm	F mm	Info	REF
30	M20	M27	32	70	372	SKM	<a href="#">111TP2227</a>
35	M20	M20	57	57	660	DKD	<a href="#">111TP2233</a>
35	M33	M24	72	30	361		<a href="#">111TP2236</a>



A mm	B mm	C mm	D mm	Info	REF
40	180	175	355	EDS 150	<a href="#">111TP5139</a>
40	240	175	415	EDS 180	<a href="#">111TP2228</a>
30	25	323	363	OK D50	<a href="#">111TP2229</a>
40	M33	30	435	OK 310	<a href="#">111TP2238</a>



A mm	B mm	C mm	D mm	E mm	F mm	Info	REF
40	M33	46	450	85	65	SKS 236	<a href="#">111TP2237</a>
30	M20	27	670	17		DKB	<a href="#">111TP2230</a>
35	M20	27	670	17		DKC 1100	<a href="#">111TP2232</a>
35	M20	27	770	17		DKC 1300	<a href="#">111TP2231</a>



A mm	D mm	E mm	F mm	Info	REF
35	16	30	435	OK 311	<a href="#">111TP2235</a>
40	24	30	200	SDS	<a href="#">111TP2234</a>

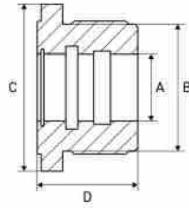



# USED ON DHOLLANDIA



## CYLINDER HEADS

CULASSES - ZYLINDERKÖPFE



	A mm	B mm	C mm	D mm	Info	REF
 	30	40	60	56	HYDEM version	<a href="#">111TP2239</a>
	30	50	50	47		<a href="#">111TP2241</a>
	30	50	70	50		<a href="#">111TP2242</a>
 	35	50	70	50	HYDEM version	<a href="#">111TP2243</a>
	35	60	190	50		<a href="#">111TP2252</a>
	35	65	80	50		<a href="#">111TP8302</a>
 	35	70	90	50	HYDEM version	<a href="#">111TP2246</a>

CYLINDER PARTS - PIÈCES DE CYLINDRE - ZYLINDER-ERSATZTEILE

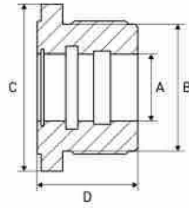
# USED ON DHOLLANDIA



CYLINDER PARTS – PIÈCES DE CYLINDRE – ZYLINDER-ERSATZTEILE

## CYLINDER HEADS

CULASSES – ZYLINDERKÖPFE



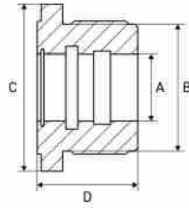
	A mm	B mm	C mm	D mm	Info	REF
	35	75	90	52		<a href="#">111TP2245</a>
	35	35	70	40,2		<a href="#">112TP4512</a>
	35	42	89	52		<a href="#">112TP4514</a>
 	40	60	80	50	HYDEM version	<a href="#">111TP2247</a>
	40	90	100	65		<a href="#">111TP2250</a>
	40	100	128	65		<a href="#">111TP2251</a>




## USED ON DHOLLANDIA



## CYLINDER HEADS

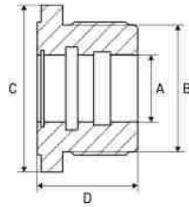
CULASSES - ZYLINDERKÖPFE






	A mm	B mm	C mm	D mm	Info	REF
	40	70	90	65		<a href="#">111TP2248</a>
 	40	65	90	65	HYDEM version, steel	<a href="#">111TP9432</a>

## CYLINDER HEADS

CULASSES - ZYLINDERKÖPFE





	A mm	B mm	C mm	D mm	Info	REF
	40	80	100	65		<a href="#">111TP2249</a>
 	40	80	100	65	HYDEM version, steel	<a href="#">111TP9433</a>

CYLINDER PARTS - PIÈCES DE CYLINDRE - ZYLINDER-ERSATZTEILE

## USED ON DHOLLANDIA



CYLINDER PARTS – PIÈCES DE CYLINDRE – ZYLINDER-ERSATZTEILE

PISTONS			
PISTONS – KOLBEN			
	Diameter mm	Info	REF
	30/50	SA/EW	<a href="#">111TP2260</a>
	30/50	HYDEM version, steel	<a href="#">111TP9436</a>

PISTONS			
PISTONS – KOLBEN			
	Diameter mm	Info	REF
	40	SA/EW – SKSV –...–2009	<a href="#">111TP2267</a>
	40/60	SA/EW	<a href="#">111TP2255</a>
	40/60	HYDEM version, steel	<a href="#">111TP9434</a>

PISTONS			
PISTONS – KOLBEN			
	Diameter mm	Info	REF
	40/80	SA/EW	<a href="#">111TP2257</a>
	40/80	HYDEM version, steel	<a href="#">111TP9435</a>

# USED ON DHOLLANDIA



PISTONS PISTONS - KOLBEN			
	Diameter mm	Info	REF
	35/50	SA/EW	<a href="#">111TP2261</a>
	35/60	HYDEM version, SA/EW	<a href="#">111TP2262</a>
	35/70	HYDEM version, SA/EW	<a href="#">111TP2263</a>
	35/80	SKS	<a href="#">111TP2258</a>
	40	HYDEM version, DA/DW - KID	<a href="#">111TP2259</a>
	40/70	HYDEM version, SA/EW	<a href="#">111TP2256</a>

CYLINDER PARTS - PIÈCES DE CYLINDRE - ZYLINDER-ERSATZTEILE

## USED ON DHOLLANDIA



CYLINDER PARTS – PIÈCES DE CYLINDRE – ZYLINDER-ERSATZTEILE

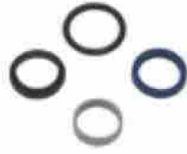
<b>PISTONS</b>			
PISTONS – KOLBEN			
	Diameter mm	Info	REF
	40/90	SA/EW	<a href="#">111TP2265</a>
 	50	HYDEM version, DA/DW – DKC	<a href="#">111TP2254</a>
	50	DA/DW – DK/DKD	<a href="#">111TP2253</a>
	50	SA/EW – SKM	<a href="#">111TP2264</a>
	50	SA/EW – SKM 2010–...	<a href="#">111TP2266</a>

# USED ON DHOLLANDIA



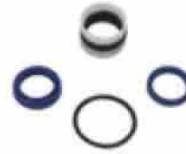
## SEAL KITS

KITS DE JOINTS - DICHTUNGSSÄTZE



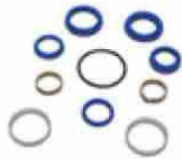
Diameter: 30/38 mm

**REF 111TP2268**



- Diameter: 30/40 mm
- DSD040.30

**REF 111TP2269**



- Diameter: 30/50 mm
- DSE050.30

**REF 111TP2270**



Diameter: 30/50 mm

**REF 111TP2271**



- Diameter: 30/50 mm
- DSE050.30.C

**REF 111TP2272**



Diameter: 30/50 mm

**REF 111TP2273**



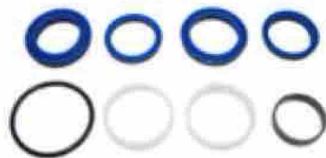
- Diameter: 30/60 mm
- DSE060.30.C

**REF 111TP2274**



Diameter: 34/50 mm

**REF 111TP8303**



Diameter: 35/50 mm

**REF 111TP2275**



- Diameter: 35/50 mm
- DD50

**REF 111TP2276**

CYLINDER PARTS - PIÈCES DE CYLINDRE - ZYLINDER-ERSATZTEILE

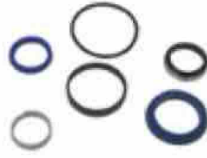
## USED ON DHOLLANDIA



CYLINDER PARTS – PIÈCES DE CYLINDRE – ZYLINDER-ERSATZTEILE

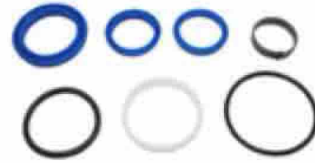
## SEAL KITS

KITS DE JOINTS – DICHTUNGSSÄTZE



Diameter: 35/60 mm

REF 111TP2277



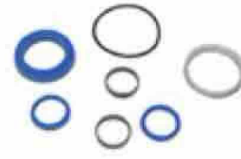
- Diameter: 35/60 mm
- DSE060.35

REF 111TP2278



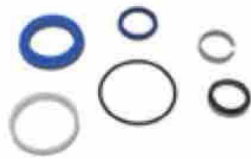
- Diameter: 35/60 mm
- DSED60.35.C

REF 111TP2279



- Diameter: 35/70 mm
- DSE070.35

REF 111TP2280



- Diameter: 35/70 mm
- DSE070.35.B

REF 111TP2281



- Diameter: 35/70 mm
- DSE070.35.C

REF 111TP2282



- Diameter: 40/30 mm
- DD040.TPM

REF 111TP8304



- Diameter: 40/50 mm
- DSD050.40

REF 111TP2283



Diameter: 40/60 mm

REF 111TP2284



HYDEM

- Diameter: 40/60 mm
- DSE060.40

REF 111TP9821

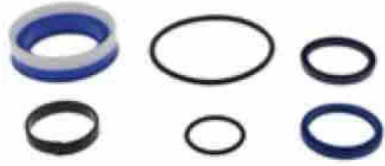


# USED ON DHOLLANDIA



## SEAL KITS

KITS DE JOINTS - DICHTUNGSSÄTZE



- Diameter: 40/70 mm
- DSE070.40

**REF 111TP2285**



Diameter: 40/70 mm

**REF 111TP2286**



- Diameter: 40/70 mm
- DSE070.40

**REF 111TP8305**



- Diameter: 40/80 mm
- DSE080.40

**REF 111TP2287**



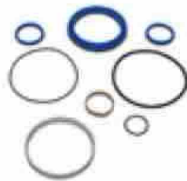
- Diameter: 40/80 mm
- DSE080.40.C

**REF 111TP8306**



- Diameter: 40/90 mm
- DSE090.40

**REF 111TP2288**



Diameter: 40/100 mm

**REF 111TP2289**



Diameter: 55/80 mm

**REF 111TP2290**



- Diameter: 55/90 mm
- DSE090.55

**REF 111TP2291**



Diameter: 40/60 mm

**REF 111TP8307**

CYLINDER PARTS - PIÈCES DE CYLINDRE - ZYLINDER-ERSATZTEILE

# USED ON DHOLLANDIA



CYLINDER PARTS – PIÈCES DE CYLINDRE – ZYLINDER-ERSATZTEILE

## SEAL KITS

KITS DE JOINTS – DICHTUNGSSÄTZE



Diameter: 40/60 mm

**REF 111TP2292**



Diameter: 80/100 mm

**REF 111TP2293**



Diameter: 80/120 mm

**REF 111TP2294**



Diameter: 80/140 mm

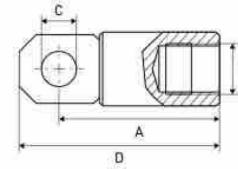
**REF 111TP2295**

# USED ON DHOLLANDIA

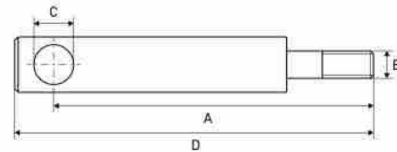


## ROD ENDS

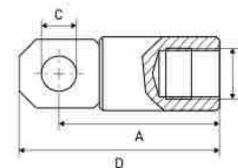
ROTULES - GELENKKÖPFE



A mm	B mm	C mm	D mm	Info	REF
60	M33	25	80	OK 310	111TP2296
120	M33	25	140	OK 310	111TP2298
150	M33	25	170	OK 310	111TP2299
180	M33	25	220	OK 310	111TP2297
210	M33	25	232	OK 310	111TP2301
240	M33	25	262	OK 310	111TP2302



A mm	B mm	C mm	D mm	REF
385	M49	30,2	405	111TP2303



A mm	B mm	C mm	D mm	Info	REF
60	30	21	78		111TP2307
60	35	21	78		111TP2306
70	35	25	90	ARM 25	111TP2304
70	40	25	90	ARM 25	111TP2305
70	35	25	90	ARM 30	111TP5010

CYLINDER PARTS - PIÈCES DE CYLINDRE - ZYLINDER-ERSATZTEILE

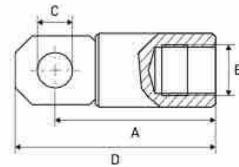
## USED ON DHOLLANDIA



CYLINDER PARTS - PIÈCES DE CYLINDRE - ZYLINDER-ERSATZTEILE

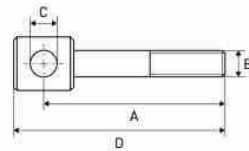
## ROD ENDS

ROTULES - GELENKKÖPFE

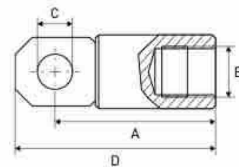


HYDEM

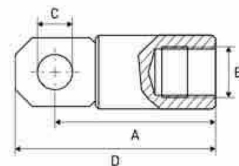
A mm	B mm	C mm	D mm	Info	REF
70	40	25	90	HYDEM version, with thread inside (M33 x 2) Used on cylinder REF 111TP9428	<b>111TP9437</b>



A mm	B mm	C mm	D mm	Info	REF
70	M20	25	87	DK/DKD	<b>111TP2308</b>



A mm	B mm	C mm	D mm	Info	REF
70	M33	25	90	ARM 30	<b>111TP2309</b>



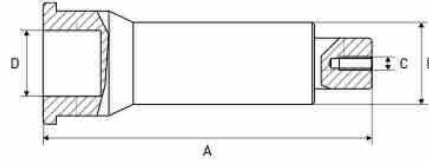
A mm	B mm	C mm	D mm	Info	REF
95	M33	35	120	OK 310	<b>111TP2300</b>

# USED ON DHOLLANDIA



## SUPPORT RODS

TIGES DE SUPPORT – KOLBENSTÜTZE



A mm	B mm	C	D mm	Info	REF
180	49	M12	M30 x 1,5	150 mm – Used on cylinder REF 111TP2220 + 111TP2221	<a href="#">111TP2310</a>
180	49	M12	Ø 40 – conical		<a href="#">111TP5095</a>
240	49	M12	M30 x 1,5	180 mm – Used on cylinder REF 111TP2220 + 111TP2221	<a href="#">111TP2311</a>
240	49	M12	Ø 40 – conical		<a href="#">111TP5096</a>

CYLINDER PARTS – PIÈCES DE CYLINDRE – ZYLINDER-ERSATZTEILE

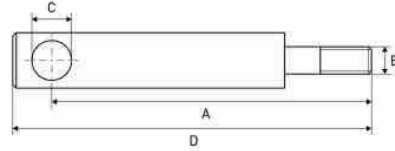
# USED ON DHOLLANDIA



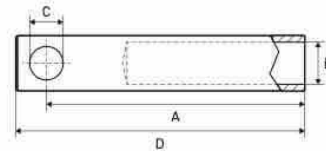
CYLINDER PARTS - PIÈCES DE CYLINDRE - ZYLINDER-ERSATZTEILE

## EXTENSIONS

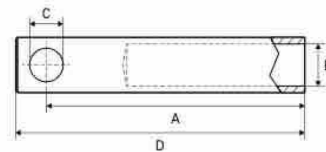
RALLONGES - VERLÄNGERUNG



A mm	B mm	C mm	D mm	REF
325	M49	30	349	<a href="#">111TP2312</a>
325	M49	35	349	<a href="#">111TP2314</a>
445	M49	30	467	<a href="#">111TP2313</a>



A mm	B mm	C mm	D mm	Info	REF
490	55	30	513	ED 150	<a href="#">111TP2315</a>
550	55	30	572	ED 150	<a href="#">111TP2316</a>
610	55	30	633	ED 150	<a href="#">111TP2317</a>
670	55	30	692	ED 150	<a href="#">111TP2318</a>
730	55	30	753	ED 150	<a href="#">111TP2319</a>
830	55	30	853	ED 150	<a href="#">111TP2320</a>



A mm	B mm	C mm	D mm	Info	REF
129	M33	34	145		<a href="#">111TP8308</a>
155	M33	34	177		<a href="#">111TP8309</a>
235	M33	34	257		<a href="#">111TP8310</a>
315	M33	34	338	ED 150	<a href="#">111TP2321</a>
395	M33	34	417		<a href="#">111TP8311</a>
645	M33	30	670		<a href="#">111TP9840</a>
705	M33	30	730		<a href="#">111TP9841</a>

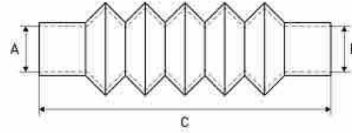
**HYDEM**

# USED ON DHOLLANDIA

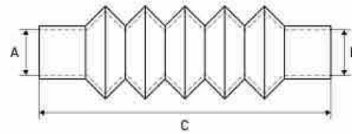


## DUST COVERS

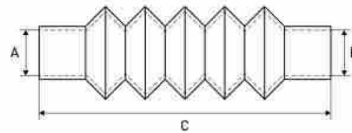
CACHE-POUSSIÈRE - STAUBKAPPE



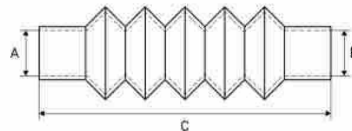
Diameter		Length	REF		
A	B	Min - C - max	Cover	Clamp 1	Clamp 2
mm	mm	mm			
42	60	115 - 160 - 360	111TP9842	111TP4916	111TP4918



Diameter		Length	REF		
A	B	Min - C - max	Cover	Clamp 1	Clamp 2
mm	mm	mm			
55	70	120 - 310 - 500	111TP2322	111TP4916	111TP4918



Diameter		Length	REF		
A	B	Min - C - max	Cover	Clamp 1	Clamp 2
mm	mm	mm			
55	130	140 - 350 - 550	111TP2323	111TP4999	111TP4924



Diameter		Length	REF		
A	B	Min - C - max	Cover	Clamp 1	Clamp 2
mm	mm	mm			
63	90	90 - 160 - 265	111TP2324	111TP5004	111TP5005

CYLINDER PARTS - PIÈCES DE CYLINDRE - ZYLINDER-ERSATZTEILE

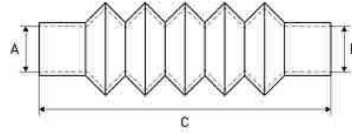
# USED ON DHOLLANDIA



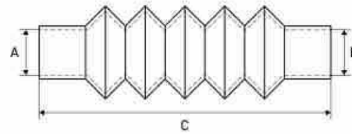
CYLINDER PARTS – PIÈCES DE CYLINDRE – ZYLINDER-ERSATZTEILE

## DUST COVERS

CACHE-POUSSIÈRE – STAUBKAPPE



Diameter		Length	REF		
A mm	B mm	Min – C – max mm	Cover	Clamp 1	Clamp 2
70	70	110 – 250 – 450	<b>111TP2325</b>	<b>111TP4916</b>	<b>111TP5005</b>



Diameter		Length	REF		
A mm	B mm	Min – C – max mm	Cover	Clamp 1	Clamp 2
70	90	125 – 225 – 290	<b>111TP2326</b>	<b>111TP4916</b>	<b>111TP4921</b>

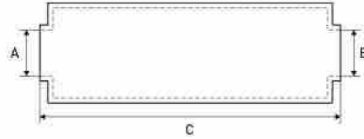


# USED ON DHOLLANDIA

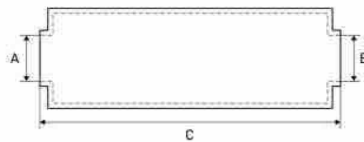


## PROTECTIVE COVERS

HOUSES DE PROTECTION - SCHUTZROHRE



Diameter		Length		REF
A	B	C	Cover	
mm	mm	mm		
55	65	63		<b>111TP2327</b>



Diameter		Length		REF	
A	B	C	Cover	Clamp	
mm	mm	mm			
60	90	120	<b>111TP2328</b>	<b>111TP5004</b>	



Diameter		Length		REF	
A	B	C	Cover	Clamp	
mm	mm	mm			
65	75	380	<b>111TP2329</b>	<b>111TP5004</b>	

CYLINDER PARTS - PIÈCES DE CYLINDRE - ZYLINDER-ERSATZTEILE

## LOCKING RINGS

BAGUES D'ARRÊT - SICHERUNGSRINGE



- Outer diameter: 64,7 mm
- Height: 15,2 mm
- Thread: M49

**REF 111TP2330**

## BRACKETS

SUPPORTS - BÜGEL



- Used on REF 111TP2225
- GS140

**REF 111TP2331**

# USED ON DHOLLANDIA



CYLINDER PARTS – PIÈCES DE CYLINDRE – ZYLINDER-ERSATZTEILE

## ADJUSTABLE BUSHINGS

BAGUES RÉGLABLES – EINSTELLBUCHSEN



- Diameter: 75 mm
- Length: 85 mm

REF [111TP2332](#)

## SUPPORTS

SUPPORTS – STÜTZE



1



2



3

Fig	Length mm	Width mm	Height mm	Info	REF
1	800	143	66	DKD	<a href="#">111TP2333</a>
2	830	252	95	DKC 1300	<a href="#">111TP2334</a>
3	735	250	60	DKC 1100	<a href="#">111TP2886</a>

# USED ON DHOLLANDIA



## SEALS

JOINTS - DICHTUNG



Diameter mm	REF
35	111TP2411



Diameter mm	REF
40	111TP2412



Diameter mm	REF
50	111TP8313



Diameter mm	REF
60	111TP8315



Diameter mm	REF
70	111TP8314



Diameter mm	REF
80	111TP2410

## SEAL RINGS

BAGUES D'ÉTANCHÉITÉ - DICHTRING



Diameter mm	REF
14 x 10 x 1	111TP2402
14 x 10 x 1,5	111TP8312
14 x 10 x 2	111TP2401

SEALS & RINGS - JOINTS & RONDELLES - DICHTUNGEN & RINGE

# USED ON DHOLLANDIA



SEALS & RINGS – JOINTS & RONDELLES – DICHTUNGEN & RINGE

## CU-SEALS

JOINTS CU – CU-DICHTUNG



Diameter	Dimensions mm	REF
M10	10,7 x 16,08 x 1,5	<b>111TP2403</b>
1/4"	13,74 x 20,57 x 2	<b>111TP2404</b>
3/8"	17,28 x 23,8 x 2	<b>111TP2405</b>
M18	18,7 x 26 x 1,5	<b>111TP2406</b>
1/2"	21,54 x 28,58 x 2,5	<b>111TP2407</b>

See chapter Universal parts on page 695 for more parts.

## SCRAPERS

SEGMENTS RACLEURS – ABSTREIFER



Dimensions mm	REF
35 x 43 x 5/7	<b>111TP2408</b>
45 x 53 x 5/7	<b>111TP2409</b>

# USED ON DHOLLANDIA



## COVERS

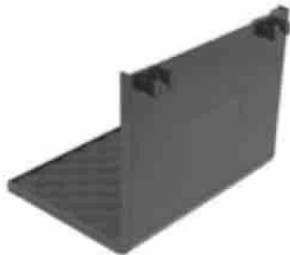
COUVERCLES - ABDECKUNGEN



Length mm	Height mm	Width mm	kW	REF
450	180	235	3	111TP2413



Length mm	Height mm	Width mm	kW	REF
410	230	335	2	111TP2414



Length mm	Height mm	Width mm	kW	REF
325	250	265	2	111TP2415



Length mm	Height mm	Width mm	kW	REF
375	265	280	3	111TP2416



Length mm	Height mm	Width mm	Info	REF
385	295	355	LM4	111TP2418



Length mm	Height mm	Width mm	REF
355	150	285	111TP2417



Length mm	Height mm	Width mm	REF
395	170	310	111TP2419



Length mm	Height mm	Width mm	Info	REF
415	180	320	2010	111TP2420

POWER PACKS & PARTS - GROUPE HYDRAULIQUE & ACCESSOIRES - AGGREGATE & ERSATZTEILE

# USED ON DHOLLANDIA



POWER PACKS & PARTS - GROUPE HYDRAULIQUE & ACCESSOIRES - AGGREGATE & ERSATZTEILE

## COVERS

COUVERCLES - ABDECKUNGEN



Length mm	Height mm	Width mm	REF
415	240	250	111TP2421



Length mm	Height mm	Width mm	Info	REF
388	250	325	LM10 2012-...	111TP2422



HYDEM version, with switch + joystick

Length mm	Height mm	Width mm	REF
385	300	355	111TP9466



HYDEM version, only cover

Length mm	Height mm	Width mm	REF
385	300	355	111TP9467



HYDEM version, with pushbutton + joystick

Length mm	Height mm	Width mm	REF
385	300	355	111TP9468



HYDEM version, with key switch + joystick

Length mm	Height mm	Width mm	REF
385	300	355	111TP9469

## FLANGES

FLASQUES - FLANSCH



1



2

Fig	Info	REF
1	Left	111TP2424
2	Right	111TP2425

# USED ON DHOLLANDIA



## CASES

BOÎTIERS - GEHÄUSE



Fig	Wattage kW	Info	REF
1	2	Left	111TP2426
2	2	Right	111TP2427
3	2	HYDEM version, left/right	111TP8560



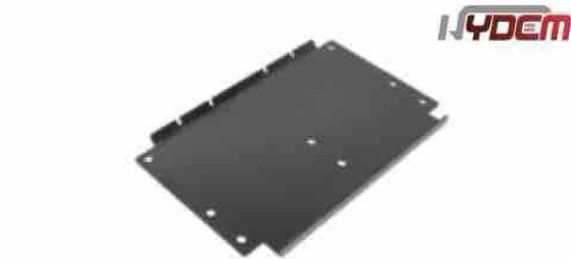
Fig	Wattage kW	Info	REF
1	3	Left	111TP2428
2	3	Right	111TP2429



Fig	Info	REF
1	2008 - SM80, left	111TP2430
2	2008 - SM80, right	111TP2431



Info	REF
LMQ/LM42, right	111TP2432



Info	REF
Mouning plate: 300 mm	111TP9438

POWER PACKS & PARTS - GROUPE HYDRAULIQUE & ACCESSOIRES - AGGREGATE & ERSATZTEILE

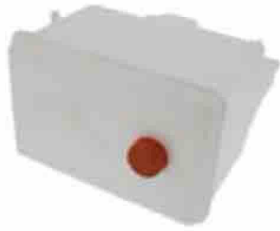
## USED ON DHOLLANDIA



POWER PACKS &amp; PARTS - GROUPE HYDRAULIQUE &amp; ACCESSOIRES - AGGREGATE &amp; ERSATZTEILE

## TANKS &amp; OIL RESERVOIRS

RÉSERVOIRS (D'HUILE) - TANKS &amp; ÖLBEHÄLTER



Length mm	Volume l	Info	REF
310	3,8	Right	<a href="#">111TP2435</a>



Length mm	Volume l	REF
390	6	<a href="#">111TP2436</a>

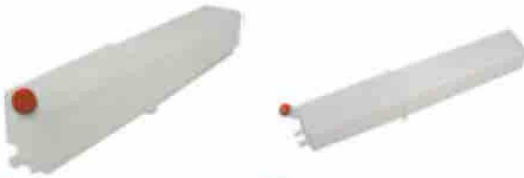


Fig	Length mm	Volume l	Info	REF
1	740	5	Left	<a href="#">111TP8318</a>
2	740	5	Right	<a href="#">111TP2440</a>

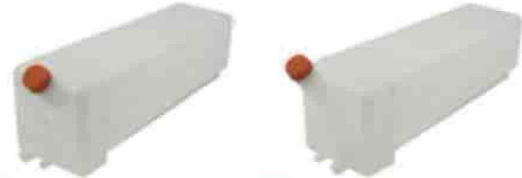


Fig	Length mm	Volume l	Info	REF
1	460	8	Left	<a href="#">111TP8319</a>
2	460	8	Right	<a href="#">111TP8320</a>



Fig	Length mm	Volume l	Adaptable to	REF
1	300	6	Left	<a href="#">111TP2437</a>
2	300	6	Right	<a href="#">111TP2438</a>
3	300	6	Left/right	<a href="#">111TP2439</a>



Fig	Length mm	Volume l	Adaptable to	REF
1	350	10	Left	<a href="#">111TP2433</a>
2	350	10	Right	<a href="#">111TP2434</a>
3	350	10	Left/right	<a href="#">111TP8317</a>



# USED ON DHOLLANDIA



## FILTERS & BREATHERS

FILTRES & RENIFLARDS - FILTER & ENTLÜFTER



- Dimensions: 25 x 43,3 mm
- Thread: 3/8" NPT

**REF 111TP2441**



Dimensions: 29 x 46 x 92 mm

**REF 111TP2442**



Dimensions: 15 x 26 x 47,1 mm

**REF 111TP2443**



- Dimensions: 20 x 36 mm
- Thread: 1/2" BSP

**REF 111TP2444**



- Dimensions: 24 x 63 mm
- 2008

**REF 111TP2445**



Thread: 1/2"

**REF 111TP2446**



Thread: 3/4

**REF 111TP2447**



Thread: M20 + gauge

**REF 111TP2448**

POWER PACKS & PARTS - GROUPE HYDRAULIQUE & ACCESSOIRES - AGGREGATE & ERSATZTEILE

# USED ON DHOLLANDIA



POWER PACKS & PARTS - GROUPE HYDRAULIQUE & ACCESSOIRES - AGGREGATE & ERSATZTEILE

## FILTERS & BREATHERS

FILTRES & RENIFLARDS - FILTER & ENTLÜFTER



Thread: 3/4"

**REF 111TP2450**



Thread: 3/4"

**REF 111TP2451**

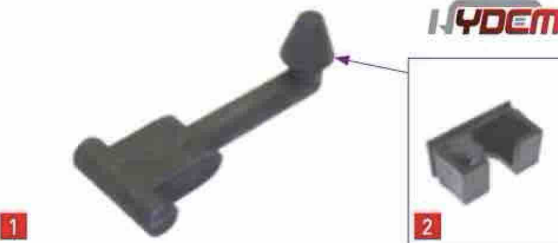


- Used on BOSH P17, P51
- Dimensions: 42 x 42 mm
- Thread: M22 x 1,5 mm.

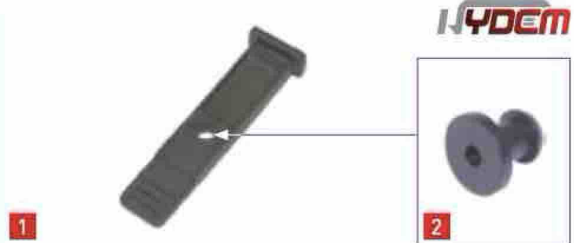
**REF 111TP8322**

## LOCKS

SERRURES - VERRIEGELUNGEN



1. **REF 111TP2452** - Old type
2. **REF 111TP2457** - Used with REF 111TP2452



1. **REF 111TP2453** - New type
2. **REF 111TP2454** - Used with REF 111TP2453 + REF 111TP9439



Height: 150 mm

**REF 111TP2455**

# USED ON DHOLLANDIA



## DRAIN PLUGS

BOUCHONS DE VIDANGE - ABLASSSCHRAUBEN



Thread: 3/8"

**REF 111TP2456**



Thread: 3/4" UNF

**REF 111TP8372**

POWER PACKS & PARTS - GROUPE HYDRAULIQUE & ACCESSOIRES - AGGREGATE & ERSATZTEILE

# USED ON DHOLLANDIA



MOTORS, PUMPS & PARTS - MOTEURS, POMPES & ACCESSOIRES - MOTOREN, PUMPEN & ERSATZTEILE

## ELECTRIC MOTORS

MOTEURS ÉLECTRIQUES - ELEKTROMOTOREN



Voltage	kW	Rotation	REF
12	1,5	CW >>	111TP2458
24	2,2	CW >>	111TP2459



Voltage	kW	Rotation	REF
24	3	CW >>	111TP2461



Voltage	kW	Rotation	REF
12	0,8	<< CCW/CW >>	111TP2460
12	0,8	<< CCW/CW >>	111TP9843
24	0,8	<< CCW/CW >>	111TP2462



Voltage	kW	Rotation	REF
24	3	CW >>	111TP2463



Voltage	kW	Rotation	REF
24	4	CW >>	111TP2464



Voltage	kW	Rotation	REF
24	3	CW >>	111TP8323



Voltage	kW	Rotation	REF
12	0,8	CW >>	111TP9844
24	0,8	CW >>	111TP2465



Voltage	kW	REF
24	0,025	111TP2466



Voltage	kW	REF
12	1,2	111TP8324
24	1,2	111TP8325



HYDEM version, universal for Dhollandia, Erhel Hydris, MBB Palfinger, Zepro

Voltage	kW	Rotation	REF
12	1,5	CW >>	111TP9100
24	2	CW >>	111TP1620

See chapter Universal parts on page 735 for more parts.

# USED ON DHOLLANDIA



## HYDRAULIC PUMPS

POMPES HYDRAULIQUES – HYDRAULIKPUMPEN



CC	Rotation	REF
0,82	<< CCW	<a href="#">111TP2467</a>
1,7	<< CCW	<a href="#">111TP2468</a>
46	<< CCW	<a href="#">111TP2469</a>
15	<< CCW	<a href="#">111TP2470</a>
4,3	<< CCW	<a href="#">111TP2471</a>



CC	Rotation	Remark	REF
2,5	<< CCW	HYDEM version of REF 111TP2469	<a href="#">111TP9845</a>
3,3	<< CCW	HYDEM version of REF 111TP2470	<a href="#">111TP9846</a>
4,3	<< CCW	HYDEM version of REF 111TP2471	<a href="#">111TP9847</a>



CC	Rotation	REF
3,3	<< CCW	<a href="#">111TP2472</a>



CC	Rotation	REF
8	<< CCW	<a href="#">111TP2473</a>



CC	Rotation	Remark	REF
9	<< CCW	HYDEM version of REF 111TP2473	<a href="#">111TP9848</a>



CC	Rotation	REF
1,2	<< CCW	<a href="#">111TP8331</a>
1,7	<< CCW	<a href="#">111TP8561</a>
2,6	<< CCW	<a href="#">111TP8328</a>
3,2	<< CCW	<a href="#">111TP8329</a>



CC	Rotation	REF
0,8	<< CCW	<a href="#">111TP9849</a>

See chapter Universal parts on page 699 for more parts.

MOTORS, PUMPS & PARTS – MOTEURS, POMPES & ACCESSOIRES – MOTOREN, PUMPEN & ERSATZTEILE

# USED ON DHOLLANDIA



MOTORS, PUMPS & PARTS - MOTEURS, POMPES & ACCESSOIRES - MOTOREN, PUMPEN & ERSATZTEILE

## ELECTRIC MOTORS WITH PUMP

MOTEURS ÉLECTRIQUES AVEC POMPE - ELEKTROMOTOREN MIT PUMPE



Voltage	kW	CC	REF
12	2	1,7	111TP2483



Voltage	kW	CC	REF
12	2	2,5	111TP2484



Voltage	kW	CC	REF
24	2	1,7	111TP2485



Voltage	kW	CC	REF
24	2	2,5	111TP5011



Voltage	kW	CC	REF
24	3	3,3	111TP2487



Voltage	kW	CC	REF
24	4,5	2,5	111TP2488

See chapter Universal parts on page 700 for more parts.

## USED ON DHOLLANDIA



<b>SUPPORTS</b>						
SUPPORTS - HALTER						
	Length mm	Height mm	Width mm	Diameter mm	Info	REF
	105	31/43	100		Plastic version	<a href="#">111TP2489</a>
	105	31/43	100		Steel version	<a href="#">111TP8337</a>
	105	38	66		HYDEM version	<a href="#">111TP9441</a>
	100	40/50	75			<a href="#">111TP2490</a>
		121		110		<a href="#">111TP2491</a>
		140		128		<a href="#">111TP2492</a>

MOTORS, PUMPS & PARTS - MOTEURS, POMPES & ACCESSOIRES - MOTOREN, PUMPEN & ERSATZTEILE

# USED ON DHOLLANDIA



MOTORS, PUMPS & PARTS - MOTEURS, POMPES & ACCESSOIRES - MOTOREN, PUMPEN & ERSATZTEILE

## HYDRAULIC MOTORS

MOTEUR HYDRAULIQUES - HYDRAULIKMOTOR



SM8

**REF 111TP2474**



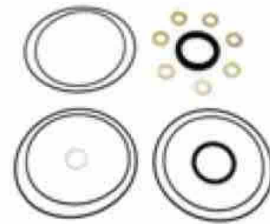
New model

**REF 111TP8332**



Hydem version, same pump as REF 111TP2474 and usable for REF 111TP8332 with extra mounting kit

**REF 111TP8333**



Seal kit for SM8 pump

**REF 111TP9851**



# USED ON DHOLLANDIA



<b>SOLENOID SWITCHES/CONTACTORS</b>				
SOLÉNOÏDES/CONTACTEURS - MAGNETSCHALTER/SCHÜTZE				
	Amperage	Info	REF	
			12 V	24 V
	80		<a href="#">111TP8334</a>	<a href="#">111TP8335</a>
	125		<a href="#">111TP5097</a>	<a href="#">111TP2479</a>
	125	HYDEM version, other bracket		<a href="#">111TP9440</a>
	150	300 A (5 sec)	<a href="#">111TP2475</a>	<a href="#">111TP2476</a>
	150		<a href="#">111TP8562</a>	<a href="#">111TP3120</a>
	200		<a href="#">111TP8336</a>	<a href="#">111TP9852</a>

See chapter Universal parts on page 701 for more parts.

MOTORS, PUMPS & PARTS - MOTEURS, POMPES & ACCESSOIRES - MOTOREN, PUMPEN & ERSATZTEILE

# USED ON DHOLLANDIA



MOTORS, PUMPS & PARTS - MOTEURS, POMPES & ACCESSOIRES - MOTOREN, PUMPEN & ERSATZTEILE

## COUPLERS

COUPLEURS - KUPPLUNGEN



Length mm	Width mm	Height mm	REF
15	13,8	5,6	<b>111TP2480</b>



Diameter mm	Height mm	REF
30	12	<b>111TP2481</b>

See chapter Universal parts on page 702 for more parts.

## BRUSHES

BALAIS - KOHLEBÜRSTEN



- Voltage: 12/24 V
- Dimensions: 15,8 x 15,8 x 8,9 mm

**REF 111TP1223**



Dimensions: 24,9 x 22,9 x 9,9 mm

**REF 111TP2482**

## BRUSH ROCKERS

COLLIERS PORTE-BALAIS - KOHLENHALTER



Diameter: 105 mm

**REF 111TP1225**

## BEARINGS

ROULEMENTS - LAGER



Diameter mm	Height mm	REF
12/32	10	<b>111TP1226</b>
17/35	10	<b>111TP1227</b>

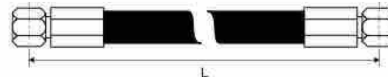
See chapter Universal parts on page 735 for more parts.

# USED ON DHOLLANDIA



## HOSES

TUYAUX - SCHLÄUCHE



Hose diameter		Length mm	Fitting 1 mm	Fitting 2 mm	Info	REF
Inch	mm					
1/4	6,4	345	M18 x 1,5	M18 x 1,5	-40-100 °C	<a href="#">111TP2493</a>
1/4	6,4	350	M18 x 1,5	M18 x 1,5	-40-100 °C	<a href="#">111TP2494</a>
1/4	6,4	500	M18 x 1,5	M18 x 1,5	-40-100 °C	<a href="#">111TP2495</a>
1/4	6,4	600	M18 x 1,5	M18 x 1,5	-40-100 °C	<a href="#">111TP8338</a>
1/4	6,4	650	M18 x 1,5	M18 x 1,5	-40-100 °C	<a href="#">111TP2496</a>
1/4	6,4	800	M18 x 1,5	M18 x 1,5	-40-100 °C	<a href="#">111TP2497</a>
1/4	6,4	1000	M18 x 1,5	M18 x 1,5	-40-100 °C	<a href="#">111TP1231</a>
1/4	6,4	1200	M18 x 1,5	M18 x 1,5	-40-100 °C	<a href="#">111TP2498</a>
1/4	6,4	1300	M18 x 1,5	M18 x 1,5	-40-100 °C	<a href="#">111TP9853</a>



Hose diameter		Length mm	Fitting 1 mm	Fitting 2 mm	Info	REF
Inch	mm					
1/4	6,4	400	Ø 10	Ø 10	-40-100 °C	<a href="#">111TP2499</a>
1/4	6,4	450	Ø 10	Ø 10	-40-100 °C	<a href="#">111TP2500</a>
1/4	6,4	500	Ø 10	Ø 10	-40-100 °C	<a href="#">111TP2501</a>
1/4	6,4	550	Ø 10	Ø 10	-40-100 °C	<a href="#">111TP8341</a>
1/4	6,4	650	Ø 10	Ø 10	-40-100 °C	<a href="#">111TP8342</a>
1/4	6,4	700	Ø 10	Ø 10	-40-100 °C	<a href="#">111TP2502</a>
1/4	6,4	750	Ø 10	Ø 10	-40-100 °C	<a href="#">111TP8343</a>
1/4	6,4	800	Ø 10	Ø 10	-40-100 °C	<a href="#">111TP2503</a>
1/4	6,4	950	Ø 10	Ø 10	-40-100 °C	<a href="#">111TP8344</a>
1/4	6,4	1000	Ø 10	Ø 10	-40-100 °C	<a href="#">111TP8345</a>
1/4	6,4	1000	Banjo BSP 3/8"	Banjo BSP 3/8"	-40-100 °C	<a href="#">111TP5129</a>
1/4	6,4	1100	Ø 10	Ø 10	-40-100 °C	<a href="#">111TP2504</a>
1/4	6,4	1300	Ø 10	Ø 10	-40-100 °C	<a href="#">111TP2505</a>
1/4	6,4	1400	Ø 10	Ø 10	-40-100 °C	<a href="#">111TP2506</a>
1/4	6,4	1600	Ø 10	Ø 10	-40-100 °C	<a href="#">111TP2507</a>
1/4	6,4	1800	Ø 10	Ø 10	-40-100 °C	<a href="#">111TP2508</a>
1/4	6,4	2300	Ø 10	Ø 10	-40-100 °C	<a href="#">111TP2509</a>
1/4	6,4	2500	Banjo 10	Banjo 10	-40-100 °C	<a href="#">111TP2510</a>
1/4	6,4	2700	Ø 10	Ø 10	-40-100 °C	<a href="#">111TP2511</a>
1/4	6,4	2800	Ø 10	Ø 10	-40-100 °C	<a href="#">111TP8346</a>
1/4	6,4	3000	Ø 10	Ø 10	-40-100 °C	<a href="#">111TP2512</a>
1/4	6,4	3250	Ø 10	Ø 10	-40-100 °C	<a href="#">111TP2513</a>
1/4	6,4	3500	Ø 10	Ø 10	-40-100 °C	<a href="#">111TP2514</a>
3/8	9,5	950	BSP 3/8"	Ø 3,8	-40-100 °C	<a href="#">111TP2515</a>
3/8	9,5	1100	Banjo BSP 3/8"	Banjo BSP 3/8"	-40-100 °C	<a href="#">111TP2516</a>
3/8	9,5	1200	Banjo BSP 3/8"	Banjo BSP 3/8"	-40-100 °C	<a href="#">111TP8347</a>
3/8	9,5	1500	Banjo BSP 3/8"	Banjo BSP 3/8"	-40-100 °C	<a href="#">111TP2517</a>
3/8	9,5	1600	Banjo BSP 3/8"	Banjo BSP 3/8"	-40-100 °C	<a href="#">111TP8348</a>
3/8	9,5	2050	Banjo BSP 3/8"	Banjo BSP 3/8"	-40-100 °C	<a href="#">111TP8349</a>
3/8	9,5	2650	Banjo BSP 3/8"	Banjo BSP 3/8"	-40-100 °C	<a href="#">111TP2518</a>
3/8	9,5	2670	Ø 17	Ø 17	-40-100 °C	<a href="#">111TP8355</a>

HOSES & FITTINGS - TUYAUX & RACCORDS - SCHLÄUCHE & KUPPLUNGEN

## USED ON DHOLLANDIA



HOSES &amp; FITTINGS - TUYAUX &amp; RACCORDS - SCHLÄUCHE &amp; KUPPLUNGEN

## HOSES

TUYAUX - SCHLÄUCHE



Hose diameter		Length mm	Fitting 1 mm	Fitting 2 mm	Info	REF
Inch	mm					
1/4	6,4	550	M18 x 1,5	Ø 10	-40-100 °C	111TP2519
1/4	6,4	750	M18 x 1,5 - 90°	Ø 10	-40-100 °C	111TP2521
1/4	6,4	900	M18 x 1,5 - 90°	Ø 10	-40-100 °C	111TP2522
1/4	6,4	1000	M18 x 1,5 - 90°	Ø 10	-40-100 °C	111TP2523
1/4	6,4	1320	M18 x 1,5 - 90°	Ø 10	-40-100 °C	111TP2525
1/4	6,4	1550	M18 x 1,5 - 90°	Ø 10	-40-100 °C	111TP2526
1/4	6,4	1600	M18 x 1,5	Ø 10	-40-100 °C	111TP2527
1/4	6,4	2000	M18 x 1,5 - 90°	Ø 10	-40-100 °C	111TP2529
1/4	6,4	2400	M18 x 1,5	Ø 10	-40-100 °C	111TP2530
1/4	6,4	2500	M18 x 1,5 - 90°	Ø 10	-40-100 °C	111TP2531
1/4	6,4	2600	M18 x 1,5	Ø 10	-40-100 °C	111TP8350
1/4	6,4	2700	M18 x 1,5 - 90°	Ø 10	-40-100 °C	111TP2532
1/4	6,4	2900	M18 x 1,5 - 90°	Ø 10	-40-100 °C	111TP2533
1/4	6,4	3000	M18 x 1,5	Ø 10	-40-100 °C	111TP8351
1/4	6,4	3150	M18 x 1,5 - 90°	Ø 10	-40-100 °C	111TP2534
3/8	9,5	350	M18 x 1,5	M18 x 1,5	-40-100 °C	111TP2539
3/8	9,5	500	M18 x 1,5	M18 x 1,5	-40-100 °C	111TP2540
3/8	9,5	1850	M18 x 1,5	Ø 10	-40-100 °C	111TP2535



Hose diameter		Length mm	Fitting 1 mm	Fitting 2 mm	Info	REF
Inch	mm					
1/4	6,4	400	M18 x 1,5 - 90°	M18 x 1,5 - 90°	-40-100 °C	111TP8352
1/4	6,4	600	M18 x 1,5 - 90°	M18 x 1,5 - 90°	-40-100 °C	111TP2541
1/4	6,4	2100	M18 x 1,5 - 90°	M18 x 1,5 - 90°	-40-100 °C	111TP2542
1/4	6,4	2250	M18 x 1,5 - 90°	M18 x 1,5 - 90°	-40-100 °C	111TP2543
1/4	6,4	2500	M18 x 1,5	M18 x 1,5	-40-100 °C	111TP2544
1/4	6,4	2650	M18 x 1,5 - 90°	M18 x 1,5 - 90°	-40-100 °C	111TP8353

# USED ON DHOLLANDIA



## HOSES

TUYAUX - SCHLÄUCHE



Hose diameter		Length mm	Fitting 1 mm	Fitting 2 mm	Info	REF
Inch	mm					
1/4	6,4	400	M18 x 1,5	M18 x 1,5 - 90°		<a href="#">111TP9854</a>
1/4	6,4	750	R1/4"	R1/4"	-40-100 °C	<a href="#">111TP2547</a>
1/4	6,4	2500	R1/4"	R1/4"	-40-100 °C	<a href="#">111TP2548</a>
3/8	9,5	450	M18 x 1,5	M18 x 1,5 - 90°	-40-100 °C	<a href="#">111TP8354</a>
3/8	9,5	600	M18 x 1,5	M18 x 1,5	-40-100 °C	<a href="#">111TP2549</a>
3/8	9,5	750	M18 x 1,5	M18 x 1,5	-40-100 °C	<a href="#">111TP2550</a>
3/8	9,5	1000	M18 x 1,5	M18 x 1,5	-40-100 °C	<a href="#">111TP2551</a>
3/8	9,5	2500	M18 x 1,5	M18 x 1,5	-40-100 °C	<a href="#">111TP2552</a>
3/8	9,5	4500	M18 x 1,5	M18 x 1,5	-40-100 °C	<a href="#">111TP2554</a>



Hose diameter		Length mm	Fitting 1 mm	Fitting 2 mm	Info	REF
Inch	mm					
1/4	6,4	250	M18 x 1,5	Ø 10	-40-100 °C	<a href="#">111TP2555</a>
1/4	6,4	1200	M18 x 1,5	Ø 3,8	-40-100 °C	<a href="#">111TP2557</a>
3/8	9,5	650	M18 x 1,5	Ø 3,8	-40-100 °C	<a href="#">111TP2558</a>
3/8	9,5	950	M18 x 1,5	Ø 3,8	-40-100 °C	<a href="#">111TP2559</a>
3/8	9,5	1200	M18 x 1,5	Ø 3,8	-40-100 °C	<a href="#">111TP2560</a>

HOSES & FITTINGS - TUYAUX & RACCORDS - SCHLÄUCHE & KUPPLUNGEN

# USED ON DHOLLANDIA



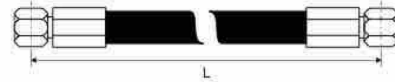
HOSES & FITTINGS – TUYAUX & RACCORDS – SCHLÄUCHE & KUPPLUNGEN

## HOSES

TUYAUX – SCHLÄUCHE



Hose diameter		Length mm	Fitting 1 mm	Fitting 2 mm	Info	REF
Inch	mm					
1/4	6,4	500	M12 x 1,5	Ø 10	-40-100 °C	<a href="#">111TP2561</a>
1/4	6,4	550	M18 x 1,5 - 90°	Ø 10	-40-100 °C	<a href="#">111TP9855</a>
1/4	6,4	700	M12 x 1,5	Ø 10	-40-100 °C	<a href="#">111TP2562</a>
1/4	6,4	750	M18 x 1,5	Ø 10	-40-100 °C	<a href="#">111TP2563</a>
1/4	6,4	900	M12 x 1,5	Ø 10	-40-100 °C	<a href="#">111TP2564</a>
1/4	6,4	1200	M18 x 1,5	Ø 10	-40-100 °C	<a href="#">111TP2565</a>
1/4	6,4	2000	M18 x 1,5	Ø 10	-40-100 °C	<a href="#">111TP2566</a>
3/8	9,5	650	M18 x 1,5	Ø 3/8"	-40-100 °C	<a href="#">111TP2567</a>
3/8	9,5	950	M18 x 1,5	Ø 3/8"	-40-100 °C	<a href="#">111TP2568</a>
3/8	9,5	1200	M18 x 1,5	Ø 3/8"	-40-100 °C	<a href="#">111TP2569</a>
3/8	9,5	2450	M12 x 1,5	M12 x 1,5	-40-100 °C	<a href="#">111TP2570</a>



Hose diameter		Length mm	Info	REF
Inch	mm			
3/8	9,5	230	-40-100 °C	<a href="#">111TP2536</a>
1/2	12,7	260	-40-100 °C	<a href="#">111TP2537</a>



- Diameter: 18 x 24 x 35,5 mm
- Length: 55 mm

**REF 111TP2538**

# USED ON DHOLLANDIA



## FITTINGS

RACCORDS - KUPPLUNGEN



Thread: M10 x 1 mm

**REF 111TP2571**



Thread: 3/8"

**REF 111TP2603**



Thread: 3/8" BSP

**REF 111TP2604**



Thread: M10 x 1 mm

**REF 111TP2605**

**HYDEM**



Diameter: 1,5 mm

**REF 111TP2572**

**HYDEM**



Diameter: 2,5 mm

**REF 111TP2573**

**HYDEM**



Diameter: 3 mm

**REF 111TP2574**



· Length: 8 mm  
· Thread: 3/8" NPT

**REF 111TP2575**



· Thread: 1/2" NPT

**REF 111TP2576**



· Length: 6 mm  
· Thread: 3/8" NPT

**REF 111TP2577**

HOSES & FITTINGS - TUYAUX & RACCORDS - SCHLÄUCHE & KUPPLUNGEN

# USED ON DHOLLANDIA



HOSES & FITTINGS – TUYAUX & RACCORDS – SCHLÄUCHE & KUPPLUNGEN

## FITTINGS

RACCORDS – KUPPLUNGEN



- Thread: 3/8"
- Length: 12-12 mm

**REF 111TP2578**



Thread: T10

**REF 111TP2579**



Thread: T12

**REF 111TP2580**



Thread: T12

**REF 111TP2581**



Thread: M18 x 1,5 mm

**REF 111TP8356**



- Thread: 3/8"
- Length: 12-12 mm

**REF 111TP9856**



Length: 10 mm

**REF 111TP2582**



- Thread: 10 mm
- Length: 10 mm

**REF 111TP2583**



Length: 12 mm

**REF 111TP2584**



Length: 12 mm

**REF 111TP2585**



# USED ON DHOLLANDIA



## FITTINGS

RACCORDS - KUPPLUNGEN



Thread: 1/4"

**REF 111TP2586**



· Thread: 12 mm  
· Length: 12 mm

**REF 111TP2587**



· Thread: 3/8"  
· Length: 12 mm

**REF 111TP2588**



· Thread: 1/4"  
· Length: 10 mm

**REF 111TP2589**



· Thread: 10 mm  
· Length: 10 mm

**REF 111TP2590**



Length: 12 mm

**REF 111TP2591**



· Thread: 1/4"  
· Length: 12 mm

**REF 111TP2592**



· Thread: 1/4"  
· Length: 12 mm

**REF 111TP2593**



· Thread: 1/4"  
· Length: 12 mm

**REF 111TP2594**



· Thread: 12 mm  
· Length: 12 mm

**REF 111TP2595**

HOSES & FITTINGS - TUYAUX & RACCORDS - SCHLÄUCHE & KUPPLUNGEN

# USED ON DHOLLANDIA



HOSES & FITTINGS – TUYAUX & RACCORDS – SCHLÄUCHE & KUPPLUNGEN

## FITTINGS

RACCORDS – KUPPLUNGEN



- Thread: 15 mm
- Length: 12 mm

**REF 111TP2596**



- Thread: 3/8"
- Length: 12 mm

**REF 111TP2597**



- Thread: 3/8"
- Length: 12 mm

**REF 111TP2598**



- Thread: M18 x 1,5 mm – 3/8"
- No return

**REF 111TP2599**



- Thread: M18 x 1,5 mm
- Length: 70 mm

**REF 111TP2600**



Thread: M18 x 1,5 mm

**REF 111TP2601**



Thread: 1/4"

**REF 111TP2602**



- Thread: 1/2" BSP – 3/8" BSP
- Length: 81 mm

**REF 111TP8357**

# USED ON DHOLLANDIA



SOLENOID VALVES ÉLECTROVANNES - MAGNETVENTILE						
	Type	Diameter mm	Thread	REF		
				12 V	24 V	
 	2/2	12,7	3/4" UNF	<a href="#">111TP2606</a>	<a href="#">111TP2607</a>	
 	2/2	12,7	3/4" UNF	<a href="#">111TP2608</a>	<a href="#">111TP2609</a>	
 	2/2	12,7	3/4" UNF	<a href="#">111TP2610</a>	<a href="#">111TP2611</a>	
 	2/2	12,7	3/4" UNF	<a href="#">111TP2612</a>	<a href="#">111TP2613</a>	
 	2/2	12,7	3/4" UNF	<a href="#">111TP2614</a>	<a href="#">111TP2615</a>	
 	2/2	12,7	3/4" UNF	<a href="#">111TP2616</a>	<a href="#">111TP2618</a>	
 	2/2	12,7	3/4" UNF	<a href="#">111TP2619</a>	<a href="#">111TP2617</a>	

COILS & VALVES - BOBINES & SOUPAPES - SPULEN & VENTILE

## USED ON DHOLLANDIA



COILS &amp; VALVES – BOBINES &amp; SOUPAPES – SPULEN &amp; VENTILE

		Type	Diameter mm	Thread	REF	
					12 V	24 V
		2/2	12,7	3/4" UNF	<a href="#">111TP2620</a>	<a href="#">111TP2621</a>
		2/2	12,7	M18 x 1,5 mm	<a href="#">111TP5142</a>	<a href="#">111TP5141</a>
		3/2	15,8-17,4	7/8" UNF	<a href="#">111TP5145</a>	<a href="#">111TP2637</a>
		4/3	12,7-14,2-15,7	3/4" UNF	<a href="#">111TP8358</a>	<a href="#">111TP8359</a>
		2/2	12,7	M18 x 1,5 mm	<a href="#">111TP5143</a>	<a href="#">111TP2624</a>
		2/2	12,7	M18 x 1,5 mm	<a href="#">111TP5140</a>	<a href="#">111TP2623</a>

## USED ON DHOLLANDIA



<b>CARTRIDGES</b> CARTOUCHES - PATRONEN		Type	Diameter mm	Thread	REF
		2/2	12,7	3/4" UNF	<a href="#">111TP2627</a>
		2/2	12,7	3/4" UNF	<a href="#">111TP2628</a>
		2/2	15	M20 x 1,5 mm	<a href="#">111TP2629</a>
		2/2	12,7	3/4" UNF	<a href="#">111TP2630</a>
		2/2	12,7	3/4" UNF	<a href="#">111TP2631</a>
		4/3	12,7-14,2-15,8	3/4" UNF	<a href="#">111TP2632</a>

COILS &amp; VALVES - BOBINES &amp; SOUPAPES - SPULEN &amp; VENTILE

# USED ON DHOLLANDIA



COILS & VALVES – BOBINES & SOUPAPES – SPULEN & VENTILE

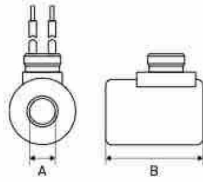
<b>CARTRIDGES</b> CARTOUCHES – PATRONEN		Type	Diameter mm	Thread	REF
		4/3	12,7-14,2-15,2	3/4" UNF	<a href="#">111TP2633</a>
		4/2	15,8-17,4-18,9	7/8" UNF	<a href="#">111TP2634</a>
		2/2	13	M18 x 1,5 mm	<a href="#">111TP2635</a>
		3/2	15,8-17,4	3/4" UNF	<a href="#">111TP2636</a>
		2/2	13	M18 x 1,5 mm	<a href="#">111TP8361</a>

# USED ON DHOLLANDIA



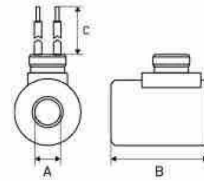
## COILS

BOBINES – SPULEN

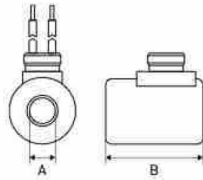


Thread: M24 x 1 mm

Voltage	Wattage	A mm	B mm	REF
12	18	13	39	<a href="#">111TP2638</a>
24	18	13	39	<a href="#">111TP2639</a>

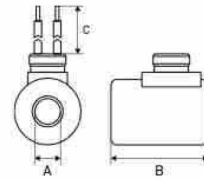


Voltage	Wattage	A mm	B mm	C mm	REF
12	18	13	39	400	<a href="#">111TP2640</a>
24	18	13	39	350	<a href="#">111TP2641</a>

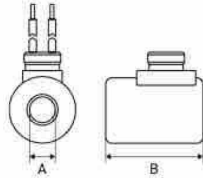


Thread: M24 x 1 mm

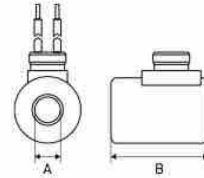
Voltage	A mm	B mm	REF
12	18	40	<a href="#">111TP2642</a>
24	18	40	<a href="#">111TP2643</a>



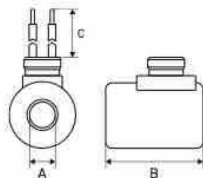
Voltage	A mm	B mm	C mm	REF
12	18	40	420	<a href="#">111TP2644</a>
24	18	40	430	<a href="#">111TP2645</a>



Voltage	A mm	B mm	REF
12	18	40	<a href="#">111TP2646</a>
24	18	40	<a href="#">111TP2647</a>



Voltage	Wattage	A mm	B mm	REF
12	60	22	55	<a href="#">111TP2648</a>
24	60	22	55	<a href="#">111TP2649</a>



Voltage	Wattage	A mm	B mm	C mm	REF
12	36	14	50	1000	<a href="#">111TP2650</a>
24	35	14	50	780	<a href="#">111TP2651</a>

COILS & VALVES – BOBINES & SOUPAPES – SPULEN & VENTILE

# USED ON DHOLLANDIA



COILS & VALVES – BOBINES & SOUPAPES – SPULEN & VENTILE

## VALVE BLOCKS

BOÎTIERS À SOUPAPES – STEUERBLÖCKE



- Length: 40 mm
- Width: 40 mm
- Height: 28/60 mm

1. **REF 111TP2652** – Left
2. **REF 111TP2653** – Right



- Length: 40 mm
- Width: 40 mm
- Height: 25/60 mm

**REF 111TP2654**



- Length: 91 mm
- Width: 30 mm
- Height: 19/33 mm

1. **REF 111TP2656** – Left
2. **REF 111TP2657** – Right



- Length: 91 mm
- Width: 30 mm
- Height: 17/30 mm

**REF 111TP2658**



- Length: 58 mm
- Width: 50 mm
- Height: 26/30 mm

**REF 111TP2659**



Voltage: 24 V

**REF 111TP2660**



Double pilot 1/4"

**REF 111TP2661**



1. **REF 111TP8362** – Voltage: 12 V
2. **REF 111TP2662** – Voltage: 24 V



- REF 111TP8363** – Voltage: 12 V
- REF 111TP2663** – Voltage: 24 V



Single

**REF 111TP2664**



# USED ON DHOLLANDIA



## VALVE BLOCKS

BOÎTIERS À SOUPAPES – STEUERBLÖCKE

Double



**REF 111TP2665**



- Diameter: 17 mm
- Thread: M18 x 1,5 x 11 mm

**REF 111TP2666**



Exit left

- REF 111TP8364** – Voltage: 12 V
- REF 111TP2667** – Voltage: 24 V



Exit right

- REF 111TP8365** – Voltage: 12 V
- REF 111TP2669** – Voltage: 24 V



SMR20

- REF 111TP8366** – Voltage: 12 V
- REF 111TP2668** – Voltage: 24 V



SM8

- REF 111TP8367** – Voltage: 12 V
- REF 111TP2670** – Voltage: 24 V



- Voltage: 24 V
- Right – SM15-X

**REF 111TP2671**



- Voltage: 24 V
- SM8

**REF 111TP9857**



COILS & VALVES – BOBINES & SOUPAPES – SPULEN & VENTILE

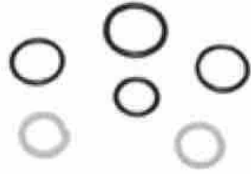
# USED ON DHOLLANDIA



COILS & VALVES – BOBINES & SOUPAPES – SPULEN & VENTILE

## SEAL KITS

KITS DE JOINTS – DICHTUNGSSÄTZE



V070

**REF 111TP2678**



V031 – V007

**REF 111TP3180**



V041 – V042

**REF 111TP8368**

## VALVES & SWITCHES

SOUPAPES & INTERRUPTEURS – VENTILE & SCHALTER



Adjustable

**REF 111TP2672**



Diameter: 4,5 mm

**REF 111TP8369**



Diameter: 18 x 8,5 mm

**REF 111TP2673**



Diameter: 12 mm

**REF 111TP2674**

# USED ON DHOLLANDIA



## VALVES & SWITCHES

SOUPAPES & INTERRUPTEURS – VENTILE & SCHALTER



- Diameter: 12,7 mm
- Thread: 3/4"

**REF 111TP2675**



- Diameter: 12/9,5 mm
- Length: 38,7 mm

**REF 111TP2676**



Thread: 1/4" BSP – M16 x 2 mm

**REF 111TP8370**



Thread: 1/2"

**REF 111TP8371**

COILS & VALVES – BOBINES & SOUPAPES – SPULEN & VENTILE

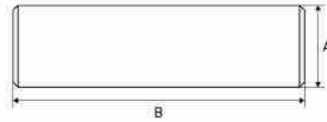
## USED ON DHOLLANDIA



PINS, BUSHINGS & ROLLERS - AXES, BAGUES & GALETS - ACHSEN, BUCHSEN & ROLLEN

## PINS

AXES - ACHSEN

A mm	B mm	Thread mm	REF	
				HYDEM version
20	67		111TP2679	
25	78		111TP8373	
25	87		111TP2680	
25	88	M8 x 1	111TP2681	
25	104	M8 x 1	111TP2682	
25	136	M8 x 1	111TP8374	
25	140		111TP2683	
25	152		111TP2684	
27	182		111TP2685	111TP9882
30	78	M8 x 1	111TP2686	
30	87	M8 x 1	111TP2687	
30	93	M8 x 1	111TP2688	111TP9496
30	97		111TP8375	
30	100		111TP2689	
30	124	M8 x 1	111TP2690	
30	135	M8 x 1	111TP2691	
30	150	M8 x 1,25	111TP2692	
30	158	M8 x 1	111TP2693	111TP9497
30	180	M8 x 1,25	111TP2694	
35	99	M8 x 1	111TP2695	111TP9498
35	124	M8 x 1,25	111TP2696	



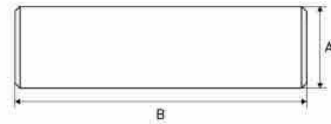
A mm	B mm	REF	
			HYDEM version
30	148	111TP9858	
30	204	111TP9442	111TP9499
35	164	111TP8376	

# USED ON DHOLLANDIA

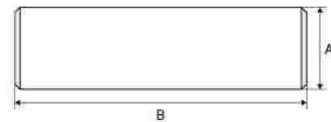


## PINS

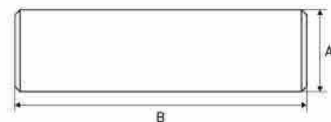
AXES - ACHSEN



A mm	B mm	Thread mm	REF	
				HYDEM version
25	95	M8 x 1,25	111TP2697	
25	129		111TP2698	
30	120	M8 x 1	111TP2699	
30	169	M8 x 1,25	111TP9859	
30	173	M8 x 1,25	111TP9860	
40	104		111TP8378	111TP9500



A mm	B mm	REF
27	125	111TP2700



A mm	B mm	Thread mm	REF
30	245	7/8" NF	111TP2701

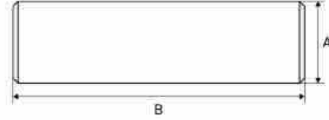
PINS, BUSHINGS & ROLLERS - AXES, BAGUES & GALETS - ACHSEN, BUCHSEN & ROLLEN

# USED ON DHOLLANDIA

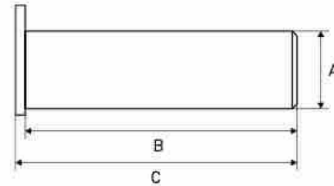


PINS, BUSHINGS & ROLLERS - AXES, BAGUES & GALETS - ACHSEN, BUCHSEN & ROLLEN

## PINS AXES - ACHSEN



A mm	B mm	Thread mm	REF
30	199	M8 x 1 mm	111TP2702
35	209	M8 x 1 mm	111TP2703



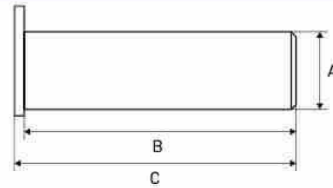
A mm	B mm	Thread mm	REF	
				HYDEM version
25	75		111TP2705	
25	78	M8 x 1,25 mm	111TP2704	111TP9501
25	85	M8 x 1,25 mm	111TP2706	111TP9502
25	100	M8 x 1 mm	111TP2707	
25	128	M8 x 1,25 mm	111TP2708	
25	170	M8 x 1,25 mm	111TP2709	
25	200	M8 x 1 mm	111TP2710	
27	182		111TP2711	
30	65	M8 x 1 mm	111TP2712	
30	77	M8 x 1,25 mm	111TP2713	111TP9503
30	97	M8 x 1,25 mm	111TP2714	
30	115	M8 x 1,25 mm	111TP2715	111TP9504
30	130	M8 x 1 mm	111TP2716	
30	140	M8 x 1,25 mm	111TP8379	
30	150	M8 x 1 mm	111TP2717	111TP9505
30	165	M8 x 1 mm	111TP2718	
30	195	M8 x 1,25 mm	111TP8380	
35	85	M8 x 1,25 mm	111TP2719	
35	100	M8 x 1,25 mm	111TP2720	
35	125	M8 x 1,25 mm	111TP2721	
35	143	M16 x 2 mm	111TP2722	
35	150	M8 x 1,25 mm	111TP2723	
35	169	M8 x 1,25 mm	111TP8381	
35	310		111TP2724	
40	130		111TP2725	
40	150	M8 x 1,25 mm	111TP2726	

# USED ON DHOLLANDIA

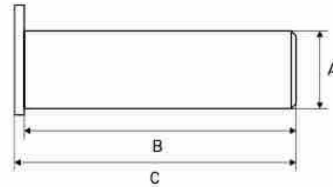


## PINS

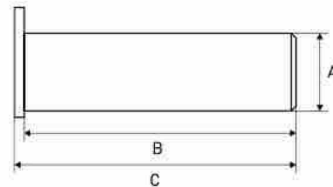
AXES - ACHSEN



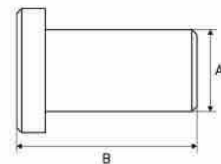
A mm	B mm	Thread mm	REF	
				HYDEM version
25	155	M8 x 1,25 mm	111TP2727	111TP9506
30	173	M8 x 1 mm	111TP2728	
30	189	M8 x 1 mm	111TP2729	111TP9507



A mm	B mm	REF
30/35	203	111TP2730



A mm	B mm	Thread mm	REF
45	126	M16 x 2 mm	111TP2731



A mm	B mm	Thread mm	REF
25	61	M8 x 1 mm	111TP2732

PINS, BUSHINGS & ROLLERS - AXES, BAGUES & GALETS - ACHSEN, BUCHSEN & ROLLEN

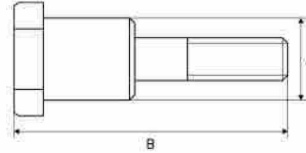
# USED ON DHOLLANDIA



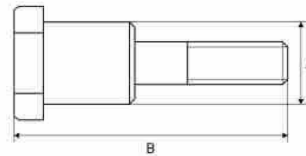
PINS, BUSHINGS & ROLLERS - AXES, BAGUES & GALETS - ACHSEN, BUCHSEN & ROLLEN

## PINS

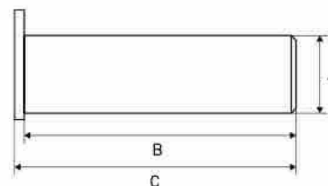
AXES - ACHSEN



A mm	B mm	Thread mm	REF	
				HYDEM version
20	76	M8 x 1 mm	111TP2733	
25	91	M8 x 1,25 mm	111TP2734	111TP9508
30	71	M8 x 1,25 mm	111TP2735	
30	90	M8 x 1 mm	111TP2736	
35	102	M8 x 1,25 mm	111TP2737	
35	122	M8 x 1,25 mm	111TP2738	



A mm	B mm	Thread mm	REF
25/30	109	M8 x 1,25 mm	111TP2739



A mm	B mm	REF	
			HYDEM version
30	64	111TP9443	111TP9509
35	86	111TP8382	
35	210	111TP2740	
40	162	111TP8377	

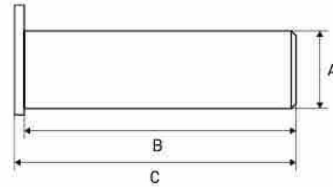


# USED ON DHOLLANDIA

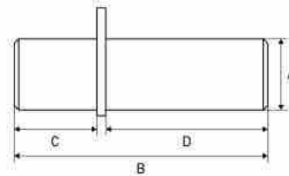


## PINS

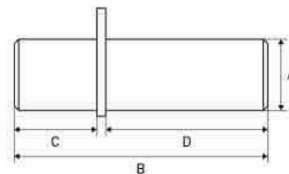
AXES - ACHSEN



A mm	B mm	Thread mm	REF
35	160	M8	<a href="#">111TP8381</a>



A mm	B mm	C mm	D mm	Thread mm	REF
25	187	84	100	M8 x 1,25 mm	<a href="#">111TP2741</a>



A mm	B mm	C mm	D mm	Thread mm	REF
25	189	85	99	M8 x 1,25 mm	<a href="#">111TP2742</a>



Plate for HYDEM axes

**REF 111TP9861**

PINS, BUSHINGS & ROLLERS - AXES, BAGUES & GALETS - ACHSEN, BUCHSEN & ROLLEN

# USED ON DHOLLANDIA



PINS, BUSHINGS & ROLLERS - AXES, BAGUES & GALETS - ACHSEN, BUCHSEN, BUCHSEN & ROLLEN

## PIN SETS

KIT D'AXES - ACHSENSETS



DHSM 5/6

**REF 111TP9862**



DHLM 50 / DHSMR 7 2003/2009

**REF 111TP9483**



DHLM 50 / DHSM 71 2003/2009

**REF 111TP9484**



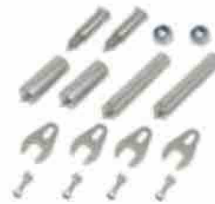
DHLM 50 2003/2009

**REF 111TP9485**



DHLM 50 2003/2009

**REF 111TP9486**



DHLM 50 / DHSM 71A 2003/2009

**REF 111TP9487**



DHSM 71A 2003/2009

**REF 111TP9488**



DHSM 71A 2003/2009

**REF 111TP9489**



DHSM 71A 2003/2009

**REF 111TP9490**



DHSM 80 / DHSMR 80

**REF 111TP9491**

# USED ON DHOLLANDIA



## PLATFORM ROLLERS

GALETS DE HAYON - PLATTFORMROLLEN

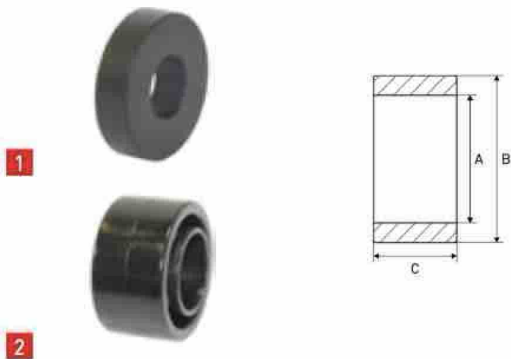


Fig	A mm	B mm	C mm	REF	
					HYDEM version
1	32	75	20	111TP2743	
1	39	75	47	111TP2744	
2	39	73	44		111TP9863
1	40	98	45	111TP2745	

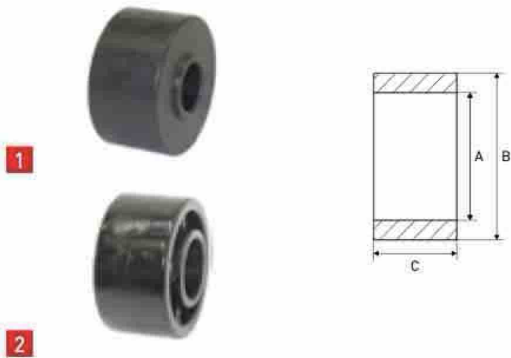


Fig	A mm	B mm	C mm	REF	
					HYDEM version
1	25	75	40	111TP2746	
1	26	75	26	111TP2747	
1	30	75	40	111TP2748	
2	30	75	40		111TP9864
1	30	100	42	111TP2749	
1	35	100	40	111TP2750	



A mm	B mm	C mm	REF
12	60	50	111TP9865



A mm	B mm	C mm	REF
39	100	47	111TP2751

PINS, BUSHINGS & ROLLERS - AXES, BAGUES & GALETS - ACHSEN, BUCHSEN & ROLLEN

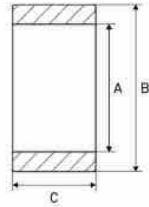
# USED ON DHOLLANDIA



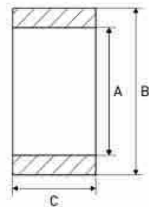
PINS, BUSHINGS & ROLLERS - AXES, BAGUES & GALETS - ACHSEN, BUCHSEN, BUCHSEN & ROLLEN

## PLATFORM ROLLERS

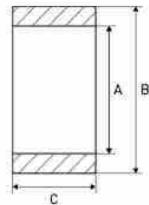
GALETS DE HAYON - PLATTFORMROLLEN



A mm	B mm	C mm	REF
40,5	115	70	<b>111TP2752</b>



A mm	B mm	C mm	REF
39	75	24	<b>111TP2753</b>



REF 111TP9863 + REF 111TP2783

A mm	B mm	C mm	REF
39	75	47	<b>111TP9866</b>

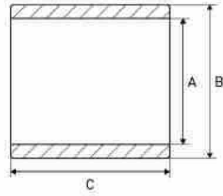
**HYDEM**

# USED ON DHOLLANDIA

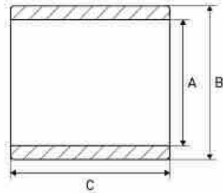


## BUSHINGS

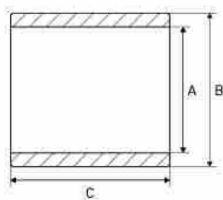
BAGUES - BUCHSEN



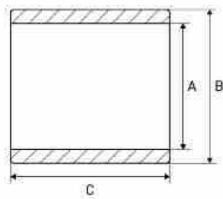
A mm	B mm	C mm	REF
25	30	25	111TP2754
25	30	30	111TP2755
30	35	30	111TP2756
30	35	50	111TP2757
35	40	30	111TP2758



A mm	B mm	C mm	Info	REF
15	17	15	DX	111TP2759
20	23	15	DX	111TP2760
20	23	20	DX	111TP2761
20	23	25	DX	111TP2762
25	28	15	DX	111TP2763
25	28	20	DX	111TP2764
25	28	25	DX	111TP2765
25	28	30	DX	111TP2766
30	34	20	DX	111TP2767
30	34	25	DX	111TP2768
30	34	30	DX	111TP2769
30	34	50	DX	111TP2770
35	39	20	DX	111TP2771
35	39	25	DX	111TP2772
35	39	30	DX	111TP2773
35	39	50	DX	111TP2774
40	44	25	DX	111TP2775
40	44	30	DX	111TP2776
45	50	40	DX	111TP2777
45	56	39	DX	111TP2778



A mm	B mm	C mm	REF
30	40	65	111TP2779



A mm	B mm	C mm	REF
27	30	68	111TP2780

PINS, BUSHINGS & ROLLERS - AXES, BAGUES & GALETS - ACHSEN, BUCHSEN & ROLLEN

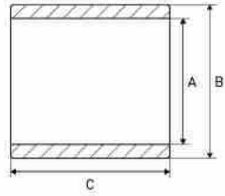
# USED ON DHOLLANDIA



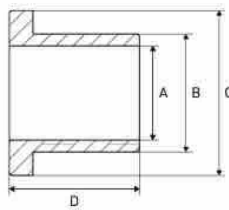
PINS, BUSHINGS & ROLLERS - AXES, BAGUES & GALETS - ACHSEN, BUCHSEN, BUCHSEN & ROLLEN

## BUSHINGS

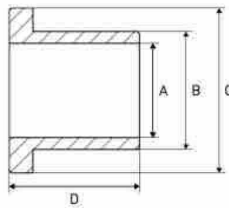
BAGUES - BUCHSEN



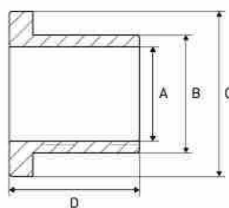
A mm	B mm	C mm	REF
56	69	135	111TP2781



A mm	B mm	C mm	REF
20	31	39/45	111TP2783



A mm	B mm	C mm	REF
26	38	44	111TP2784



A mm	B mm	C mm	REF
30	40	45.5	111TP2785

See chapter Universal parts on page 705 for more parts.

# USED ON DHOLLANDIA



## BUSHING SETS

KIT BAGUES – BUCHSENSETS



DHLM 50 / DHSM 71A 2003/2009

**Dimensions:**

- 2x 25 x 28 x 30 mm
- 4x 30 x 34 x 25 mm
- 16x 30 x 34 x 30 mm
- 2x 35 x 39 x 50 mm

**REF 111TP9492**



DHLM 50 / DHSM 71A 2003/2009

**Dimensions:**

- 4x 30 x 34 x 25 mm
- 8x 30 x 34 x 30 mm

**REF 111TP9493**



DHLM 50 / DHSM 71A 2003/2009

**Dimensions:**

- 4x 30 x 34 x 25 mm
- 8x 30 x 34 x 30 mm
- 2x 35 x 39 x 50 mm

**REF 111TP9494**



DHLM 50 / DHSM 71A 2003/2009

**Dimensions:**

- 4x 30 x 34 x 30 mm
- 2x 25 x 28 x 30 mm
- 2x 35 x 39 x 50 mm

**REF 111TP9495**



DHSM 5/6

**Dimensions:**

- 2x 25 x 28 x 30 mm
- 2x 30 x 34 x 20 mm
- 18x 30 x 34 x 30 mm
- 2x 30 x 34 x 50 mm
- 4x 35 x 39 x 30 mm
- 2x 35 x 39 x 50 mm

**REF 111TP9867**



DHSMR 80

**Dimensions:**

- 2x 25 x 28 x 25 mm
- 18x 30 x 34 x 30 mm
- 2x 35 x 39 x 25 mm

**REF 111TP9868**

PINS, BUSHINGS & ROLLERS – AXES, BAGUES & GALETS – ACHSEN, BUCHSEN & ROLLEN

# USED ON DHOLLANDIA



PINS, BUSHINGS & ROLLERS - AXES, BAGUES & GALETS - ACHSEN, BUCHSEN & ROLLEN

## DISTANCE RINGS

BAGUES D'ÉCARTEMENT - ABSTANDSRINGE



**REF 111TP2786** - Diameter: 25/37 x 17 mm

**REF 111TP2787** - Diameter: 30/42 x 17 mm

**REF 111TP2788** - Diameter: 35/47 x 17 mm



**REF 111TP2789** - Diameter: 27,5/40 x 11 mm

**REF 111TP2790** - Diameter: 31/43 x 9 mm

**REF 111TP2791** - Diameter: 31/44 x 14 mm

**REF 111TP2792** - Diameter: 32/44 x 22,5 mm



· Diameter: 25/50 x 7 mm

· LM2

**REF 111TP2793**



· Diameter: 30,5/44,5 x 3 mm

· DHSM

**REF 111TP2794**

## EYE BOLTS

BOULONS À CEIL - RINGSCHRAUBEN



Diameter mm	Length mm	REF
8	35	<b>111TP8383</b>
8	70	<b>111TP2795</b>
10	70	<b>111TP2796</b>
12	70	<b>111TP2797</b>



# USED ON DHOLLANDIA



## ROLL STOPS & PARTS

BUTÉES DE ROUES & ACCESSOIRES – ABROLLSICHERUNGEN & ERSATZTEILE



- 1  
· Length: 225 mm  
· Width: 110 mm

1. **REF 111TP2811** – Left  
2. **REF 111TP2812** – Right



- 1  
· Length: 1010 mm  
· Width: 110 mm

1. **REF 111TP2813** – Left  
2. **REF 111TP2814** – Right



- 1  
· Length: 1010 mm  
· Width: 105 mm

1. **REF 111TP2820** – Left  
2. **REF 111TP2819** – Right



- 1  
· Length: 1025 mm  
· Width: 155 mm

1. **REF 111TP2822** – Left  
2. **REF 111TP2821** – Right



- Length: 80 mm  
· Width: 35 mm

**REF 111TP2815**



- Length: 115 mm  
· Width: 58 mm

**REF 111TP8384**



- Diameter: 16 x 70 mm

**REF 111TP2816**



- Dimensions: 38 x 10 x NN  
· Length on demand

**REF 111TP2817**

MECHANICAL PARTS – PIÈCES MÉCANIQUES – MECHANISCHE ERSTATZTEILE

# USED ON DHOLLANDIA



MECHANICAL PARTS – PIÈCES MÉCANIQUES – MECHANISCHE ERSTATZTEILE

## ROLL STOPS & PARTS

BUTÉES DE ROUES & ACCESSOIRES – ABROLLSICHERUNGEN & ERSATZTEILE



Thread: M8 x 40 mm

**REF 111TP2818**



- Height: 17 mm
- Thread: M8 x 1,25 mm

**REF 111TP8385**



- Diameter: 3 mm
- Length: 81 mm

**REF 111TP8386**

# USED ON DHOLLANDIA



## SPRINGS & GAS SPRINGS

RESSORTS & VÉRINS À GAZ - FEDERN & GASDRUCKFEDERN



Diameter mm	Dimensions mm	REF
4,5	80 x 41	<a href="#">111TP2823</a>



Diameter mm	Dimensions mm	REF
5	44 x 85	<a href="#">111TP2830</a>



Diameter mm	Length mm	Thickness mm	REF
50	220	8	<a href="#">111TP2824</a>



Diameter mm	Length mm	Thickness mm	REF
55	220	10	<a href="#">111TP2825</a>



Diameter mm	Length mm	Thickness mm	REF
45	530	10,3	<a href="#">111TP2829</a>



Diameter mm	Length mm	Thickness mm	Info	REF
48	250	5,5	LSK/SKM	<a href="#">111TP2831</a>



Diameter mm	Length mm	REF
11,5	1385	<a href="#">111TP2827</a>



Diameter mm	Length mm	REF
13	1380	<a href="#">111TP2828</a>

MECHANICAL PARTS - PIÈCES MÉCANIQUES - MECHANISCHE ERSTATZTEILE

# USED ON DHOLLANDIA



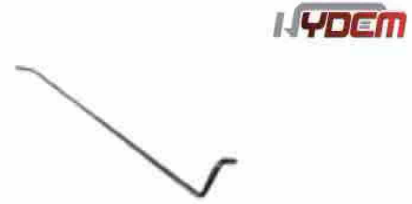
MECHANICAL PARTS – PIÈCES MÉCANIQUES – MECHANISCHE ERSTATZTEILE

## SPRINGS & GAS SPRINGS

RESSORTS & VÉRINS À GAZ – FEDERN & GASDRUCKFEDERN



Diameter mm	Length mm	REF
11	1145	<a href="#">111TP9445</a>



Diameter mm	Length mm	REF
14	1390	<a href="#">111TP9822</a>



Fig	Diameter mm	Width mm	Info	REF
1	11	77	Left	<a href="#">111TP2835</a>
2	11	77	Right	<a href="#">111TP2836</a>
	11	77	Set	<a href="#">111TP2837</a>



Fig	Diameter mm	Width mm	Info	REF
1	12	85	Left	<a href="#">111TP2833</a>
2	12	85	Right	<a href="#">111TP9344</a>
	12	85	Set	<a href="#">111TP2826</a>



Diameter mm	REF
60	<a href="#">111TP2832</a>



Info	REF
1500 Nw	<a href="#">111TP2838</a>

See chapter Universal parts on page 707 for more parts.

# USED ON DHOLLANDIA



## BUMPERS & BUFFERS

PARE-CHOCS & BUTOIRS – STOSSDÄMPFER & -PUFFER



- Diameter: 30 x 30 x 20 mm
- Thread: M8

**REF 111TP2840**



Diameter: 33,4 x 69 x 56 mm

**REF 111TP2841**



- Diameter: 100 mm
- Thickness: 25 mm
- Thread: M10
- DH-SM

**REF 111TP2842**



- Dimensions: 85 x 92 mm
- End stop – steel

**REF 111TP2843**



- Dimensions: 67 x 70 mm
- End stop – alu

**REF 111TP2844**



- AL207/AL208
- End stop front
- Alu

**REF 111TP8387**



AL207/AL208 – end stop

**REF 111TP2845**



Extra surface treatment

**REF 111TP9448**



Used on REF 111TP2843

**REF 111TP2846**



SMR

**REF 111TP2847**

MECHANICAL PARTS – PIÈCES MÉCANIQUES – MECHANISCHE ERSTATZTEILE

# USED ON DHOLLANDIA



MECHANICAL PARTS – PIÈCES MÉCANIQUES – MECHANISCHE ERSTATZTEILE

## BUMPERS & BUFFERS

PARE-CHOCS & BUTOIRS – STOSSDÄMPFER & -PUFFER



**HYDEM**

- SM
- Dimensions: 210 x 206 mm

**REF 111TP2908**



**HYDEM**

- Length: 250 mm
- Width: 210 mm
- Height: 65 mm

**REF 111TP9869**



- Length: 92 mm
- Width: 85 mm
- Height: 25 mm
- End stop – steel
- Used on REF 111TP2839

**REF 111TP2839**



- Length: 200 mm
- Width: 48 mm
- Height: 35 mm

**REF 111TP2850**



**HYDEM**

- Length: 125 mm
- Width: 40 mm
- Height: 45 mm
- Used on REF 111TP2908

**REF 111TP2849**



- Length: 90 mm
- Width: 90 mm
- Height: 30 mm

**REF 111TP8389**



- Diameter: 40 mm
- Height: 20 mm

**REF 111TP8388**



- Diameter: 50 mm
- Height: 40 mm

**REF 111TP8390**



- Diameter: 50 mm
- Height: 30 mm

**REF 111TP2848**

# USED ON DHOLLANDIA



## SLIDER BLOCKS, ROLLERS & WEAR PLATES

BLOCS DE DÉFILEMENT, GALETS & PLAQUES D'USURE - GLEITBLÖCKE, LAUFROLLEN & VERSCHLEISSPLATTEN

 <ul style="list-style-type: none"> <li>Length: 148 mm</li> <li>Width: 26 mm</li> <li>Height: 85 mm</li> </ul> <p><b>REF 111TP2851</b></p>	 <ul style="list-style-type: none"> <li>Length: 148 mm</li> <li>Width: 26 mm</li> <li>Height: 85 mm</li> <li>Slide block without ALU rol – Used on REF 111TP2851</li> </ul> <p><b>REF 111TP2852</b></p> <hr/>  <ul style="list-style-type: none"> <li>Length: 148 mm</li> <li>Width: 26 mm</li> <li>Height: 85 mm</li> <li>Hydem version, improved slide block</li> </ul> <p><b>REF 111TP9450</b></p> <hr/>  <ul style="list-style-type: none"> <li>Inner diameter: 35 mm</li> <li>Outer diameter: 49,7 mm</li> <li>ALU rol – Used on REF 111TP2851</li> </ul> <p><b>REF 111TP9823</b></p>
 <ul style="list-style-type: none"> <li>Diameter: 27,7 x 30,7 mm</li> <li>Length: 69 mm</li> </ul> <p><b>REF 111TP2853</b></p>	 <ul style="list-style-type: none"> <li>Diameter: 86 mm</li> <li>DH-V</li> </ul> <p><b>REF 111TP2854</b></p>
 <ul style="list-style-type: none"> <li>Diameter: 87 mm</li> <li>H-SM</li> </ul> <p><b>REF 111TP2855</b></p>	 <ul style="list-style-type: none"> <li>Diameter: 87 mm</li> <li>HYDEM version, blacked rollers</li> </ul> <p><b>REF 111TP9451</b></p>
 <p>Diameter: 40/85 x 27 mm</p> <p><b>REF 111TP2856</b></p>	

MECHANICAL PARTS – PIÈCES MÉCANIQUES – MECHANISCHE ERSTATZTEILE

## USED ON DHOLLANDIA



MECHANICAL PARTS – PIÈCES MÉCANIQUES – MECHANISCHE ERSTATZTEILE

## CAPS

BOUCHONS – DECKEL



Length mm	Width mm	REF
70	80	<a href="#">111TP2857</a>
100	100	<a href="#">111TP2858</a>
120	120	<a href="#">111TP2859</a>
150	150	<a href="#">111TP2860</a>
180	180	<a href="#">111TP2861</a>



- Length: 100 mm
- Width: 50 mm

REF [111TP2864](#)

1

2

- Length: 100 mm
- Width: 100 mm

1. REF [111TP2862](#) – Left
2. REF [111TP2863](#) – Right



- Length: 100 mm
- Width: 80 mm

REF [111TP2867](#)

1

2

3

- Length: 100 mm
- Width: 50 mm

1. REF [111TP2865](#) – Left
2. REF [111TP2866](#) – Right
3. REF [111TP9453](#) – HYDEM version, left/right



- Length: 90 mm
- Width: 136 mm

REF [111TP2868](#)

- Length: 90 mm
- Width: 103 mm

REF [111TP8391](#)

- Length: 100 mm
- Width: 100 mm

REF [111TP8392](#)

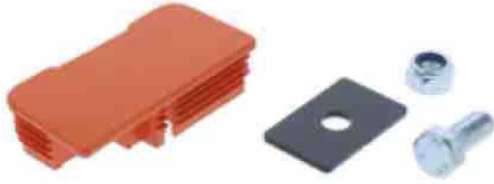


# USED ON DHOLLANDIA



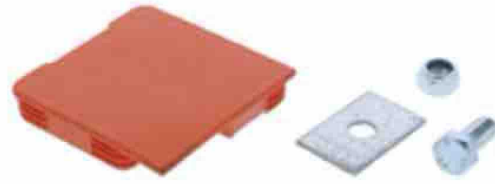
## CAPS

BOUCHONS - DECKEL



- Length: 100 mm
- Width: 50 mm

**REF 111TP8393**



- Length: 100 mm
- Width: 100 mm

**REF 111TP8394**



Diameter: 100 mm

**REF 111TP2869**

See chapter Universal parts on page 707 for more parts.

MECHANICAL PARTS - PIÈCES MÉCANIQUES - MECHANISCHE ERSTATZTEILE

# USED ON DHOLLANDIA



MECHANICAL PARTS – PIÈCES MÉCANIQUES – MECHANISCHE ERSTATZTEILE

## PLATFORM PARTS

PIÈCES DE PLATEFORME – PLATTFORMERSATZTEILE



Length: 650 mm

**REF 111TP2870**



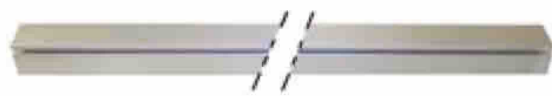
Length: 680 mm

**REF 111TP2871**



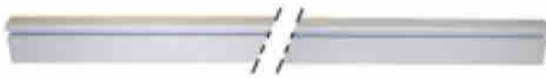
Length: 730 mm

1. **REF 111TP2872** – Left
  2. **REF 111TP2873** – Right
- REF 111TP2874** – Set left/right



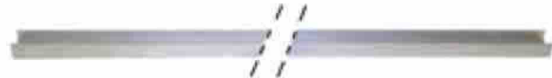
- Length: 2450 mm
- Width: 100 mm
- Height: 100 mm

**REF 111TP2875**



- Length: 2000 mm
- Width: 100 mm
- Height: 50 mm

**REF 111TP2876**



- Length: 1000 mm
- Width: 52 mm
- Height: 57 mm

**REF 111TP2877**



- Length: 1250 mm
- Width: 40 mm

**REF 111TP2878**



- Length: 1450 mm
- Width: 40 mm

**REF 111TP2879**



- Length: 1600 mm
- Width: 40 mm

**REF 111TP9454**



- Width: 50 mm
- Height: 38 mm

**REF 111TP2880**



# USED ON DHOLLANDIA



## PLATFORM PARTS

PIÈCES DE PLATEFORME – PLATTFORMERSATZTEILE



- REF [111TP9824](#) – Length: 1550 mm
- REF [111TP9825](#) – Length: 1650 mm
- REF [111TP9826](#) – Length: 1850 mm
- REF [111TP9827](#) – Length: 2000 mm
- REF [111TP9828](#) – Length: 2250 mm
- REF [111TP9829](#) – Length: 2500 mm



- Width: 25 mm
- Height: 6,5 mm

REF [111TP2882](#)



- Length: 1800 mm
- Width: 25 mm
- Height: 6,5 mm

REF [111TP8395](#)



Length: 2600 mm

REF [111TP8396](#)



Length: 3000 mm

REF [111TP8397](#)



- Length: 400 mm
- Width: 361 mm
- Height: 8 mm
- Standard – LM3

REF [111TP2883](#)



- Length: 270 mm
- Width: 245 mm
- Height: 80 mm

1. REF [111TP2884](#) – Left
2. REF [111TP2885](#) – Right



Length: 435 mm

1. REF [111TP2887](#) – Left
2. REF [111TP2888](#) – Right



- Length: 380 mm
- HYDEM version, universal length

1. REF [111TP9455](#) – Left
2. REF [111TP9456](#) – Right

MECHANICAL PARTS – PIÈCES MÉCANIQUES – MECHANISCHE ERSTATZTEILE

# USED ON DHOLLANDIA



MECHANICAL PARTS – PIÈCES MÉCANIQUES – MECHANISCHE ERSTATZTEILE

## PLATFORM PARTS

PIÈCES DE PLATEFORME – PLATTFORMERSATZTEILE

 <p>1</p> <ul style="list-style-type: none"> <li>Length: 850 mm</li> <li>Alu</li> </ul> <p>2</p> <ul style="list-style-type: none"> <li>1. <b>REF 111TP9830</b> – Left</li> <li>2. <b>REF 111TP9880</b> – Right</li> </ul>	 <ul style="list-style-type: none"> <li>Length: 950 mm</li> <li>Alu</li> </ul> <p>1. <b>REF 111TP9831</b> – Left</p> <p>2. <b>REF 111TP9881</b> – Right</p>
 <p>1</p> <ul style="list-style-type: none"> <li>Length: 950 mm</li> <li>Alu</li> <li>HYDEM version, universal model</li> </ul> <p>2</p> <ul style="list-style-type: none"> <li>1. <b>REF 111TP9832</b> – Left</li> <li>2. <b>REF 111TP9870</b> – Right</li> </ul>	 <p>1</p> <p>2</p> <p>Length: 153 mm</p> <ul style="list-style-type: none"> <li>1. <b>REF 111TP2889</b> – Left</li> <li>2. <b>REF 111TP2890</b> – Right</li> </ul>
 <p>1</p> <ul style="list-style-type: none"> <li>Length: 717 mm</li> <li>Width: 202 mm</li> <li>Height: 36 mm</li> <li>Diameter: 140 mm</li> <li>Without hole</li> </ul> <p>2</p> <ul style="list-style-type: none"> <li>1. <b>REF 111TP2892</b> – Left</li> <li>2. <b>REF 111TP5130</b> – Right</li> </ul>	 <p>1</p> <ul style="list-style-type: none"> <li>Length: 717 mm</li> <li>Width: 202 mm</li> <li>Height: 36 mm</li> <li>Diameter: 140 mm</li> <li>With hole</li> </ul> <p>2</p> <ul style="list-style-type: none"> <li>1. <b>REF 111TP5131</b> – Left</li> <li>2. <b>REF 111TP2891</b> – Right</li> </ul>
 <p>1</p> <ul style="list-style-type: none"> <li>Length: 653,5 mm</li> <li>Width: 171,5 mm</li> <li>Height: 2 mm</li> <li>Left/right</li> </ul> <p>2</p> <ul style="list-style-type: none"> <li>1. <b>REF 111TP2894</b> – Without hole</li> <li>2. <b>REF 111TP2893</b> – With hole</li> </ul>	 <p>1</p> <ul style="list-style-type: none"> <li>Length: 195 mm</li> <li>Width: 93 x 31 mm</li> <li>LM2</li> </ul> <p>2</p> <ul style="list-style-type: none"> <li>1. <b>REF 111TP2895</b> – Left</li> <li>2. <b>REF 111TP2896</b> – Right</li> </ul>
 <ul style="list-style-type: none"> <li>Length: 190 mm</li> <li>Width: 177 mm</li> <li>Height: 63 mm</li> <li>Thread: M20 x 2,5 mm</li> </ul> <p><b>REF 111TP2901</b></p>	 <ul style="list-style-type: none"> <li>Length: 588 mm</li> <li>Width: 225 mm</li> <li>Left/right</li> </ul> <p><b>REF 111TP9459</b></p>

# USED ON DHOLLANDIA



## PLATFORM PARTS

PIÈCES DE PLATEFORME – PLATTFORMERSATZTEILE



Alu – with bushings

**REF 111TP2902**



HYDEM version, with grease nipple

**REF 111TP9460**



Diameter: 12 mm

**REF 111TP2903**



· Length: 166 mm  
· Width: 121 mm

**REF 111TP2904**



Alu

**REF 111TP2905**



**REF 111TP9871** – Length: 1900 mm

**REF 111TP2906** – Length: 2100 mm



· Length: 2000 mm  
· Diameter: 27 mm

**REF 111TP2907**



Length: 1195 mm

**REF 111TP2929**



· Length: 710 mm  
· SM 2004-...

**REF 111TP2942**



· Length: 200 mm  
· Width: 160 mm  
· Height: 145 mm  
· LM40

1. **REF 111TP2897** – Left

2. **REF 111TP2898** – Right

MECHANICAL PARTS – PIÈCES MÉCANIQUES – MECHANISCHE ERSTATZTEILE

# USED ON DHOLLANDIA



MECHANICAL PARTS – PIÈCES MÉCANIQUES – MECHANISCHE ERSTATZTEILE

## PLATFORM PARTS

PIÈCES DE PLATEFORME – PLATTFORMERSATZTEILE



1

- Length: 200 mm
- Width: 135 mm
- Height: 142 mm
- LM42

2

1. **REF 111TP2899** – Left
2. **REF 111TP2900** – Right



SM 2004 – SM 2013

**REF 111TP9461**

Steel cable kit

**REF 111TP9462**

Steel

**REF 111TP2909**

LM50

**REF 111TP2910**

1

LM6

2

1. **REF 111TP2912** – Left
2. **REF 111TP2913** – Right
- REF 111TP2911** – Set



1

LM4/SM4

2

1. **REF 111TP2915** – Left
2. **REF 111TP2916** – Right
- REF 111TP2914** – Set



LM42

**REF 111TP8399**

- LM30
- Centre distance: 280 mm
- Diameter axis: 35/30 mm

**REF 111TP9833**

Diameter: 30 mm

**REF 111TP2917**

# USED ON DHOLLANDIA



## PLATFORM PARTS

PIÈCES DE PLATEFORME – PLATTFORMERSATZTEILE



- Diameter: 40 mm
- Thickness: 5 mm

**REF 111TP2918**



SM80

**REF 111TP2919** – Length: 1500 mm



**REF 111TP8400** – Length: 1700 mm



**REF 111TP2920** – Length: 1900 mm



1



2

Length: 102 mm

1. **REF 111TP2921** – Male
2. **REF 111TP2922** – Female



**HYDEM**

- Length: 102 mm
- HYDEM version, male + female

**REF 111TP9463**



- Width: 20,5 mm
- Height: 32 mm

**REF 111TP2923**



- Length: 2600 mm
- Width: 55 mm

**REF 111TP2924**



Dimensions: 38 x 19,7 x 3,5 mm

**REF 111TP2925**



- Diameter: 55 mm
- Thread: M14 x 2 mm

**REF 111TP2926**

MECHANICAL PARTS – PIÈCES MÉCANIQUES – MECHANISCHE ERSTATZTEILE

## USED ON DHOLLANDIA



MECHANICAL PARTS – PIÈCES MÉCANIQUES – MECHANISCHE ERSTATZTEILE

## PLATFORM PARTS

PIÈCES DE PLATEFORME – PLATTFORMERSATZTEILE



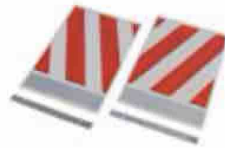
DK/DKD

**REF 111TP2927**

- Width: 250 mm
- Length: 400 mm
- § 53b Abs, 5 StVZO
- TÜV/CE without certificate

**REF 111TP1319**

- Width: 250 mm
- Length: 400 mm
- § 53b Abs, 5 StVZO
- TÜV/CE without certificate

**REF 111TP1320**

- Width: 200 mm
- Length: 300 mm

**REF 111TP2930**

- Width: 400 mm
- Length: 300 mm

**REF 111TP5012**

- Dimensions: 30 x 3000 mm
- Left/right

**REF 111TP2932**

DH-SM

**REF 111TP2934**

DH-SM

**REF 111TP2935**

Thread: M8 x 1,25 mm

**REF 111TP2936**

Alu

**REF 111TP2937**



# USED ON DHOLLANDIA



## PLATFORM PARTS

PIÈCES DE PLATEFORME – PLATTFORMERSATZTEILE



Alu

**REF 111TP2938**



Alu

**REF 111TP2939**



Length: 350 mm

**REF 111TP2940**



DH-SM

**REF 111TP2941**



DH-RM

**REF 111TP9834**



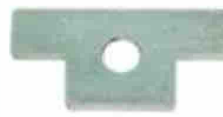
- Diameter: 15/12 mm
- Length: 245 mm
- Thread: M8 x 1,25 mm

**REF 111TP8401**



Dimensions: 100 x 10 mm

**REF 111TP8402**



- Length: 32,5 mm
- Width: 15 mm
- Height: 2 mm
- Diameter hole: 5,5 mm

**REF 111TP2928**

See chapter Universal parts on page 708 for more parts.

MECHANICAL PARTS – PIÈCES MÉCANIQUES – MECHANISCHE ERSTATZTEILE

# USED ON DHOLLANDIA



MECHANICAL PARTS – PIÈCES MÉCANIQUES – MECHANISCHE ERSTATZTEILE

## GREASE FITTINGS & CAPS

RACCORDS DE GRAISSAGE & BOUCHONS – SCHMIERNIPPEL & SCHUTZKAPPEN



Type thread mm	Info	REF
M6 x 1	90°	111TP8403
M6 x 1	180°	111TP2943
M8 x 1	180°	111TP2944
M8 x 1,25	180°	111TP8404



Type thread	Colour	REF
M6	Red	111TP8566
M6	Green	111TP8567
M6	Yellow	111TP8568
M6	Blue	111TP8569



Type thread	Colour	REF
M6	Red	111TP2945
M6	Green	111TP8563
M6	Yellow	111TP8564
M6	Blue	111TP8565

See chapter Universal parts on page 710 for more parts.

# USED ON DHOLLANDIA



## JOYSTICKS

LEVIERS DE COMMANDE - JOYSTICKS



8 x NO

**REF 111TP2957**



- Diameter: 32,5 mm
- Without contacts

**REF 111TP2958**



8 x NO – old version

**REF 111TP2959**



> 2008

**REF 111TP2963**



8 x NO – new version

**REF 111TP2960**



**HYDEM**

- HYDEM version
- 4 functions wired
- Mafelec switch

**REF 111TP9465**



**HYDEM**

- HYDEM version
- 4 functions non wired
- Mafelec switch

**REF 111TP3263**



> 2010

**REF 111TP2961**



**HYDEM**

Metal joystick

**REF 111TP2962**

SWITCHES & CONTROLLERS – INTERRUPTEURS & COMMANDES – SCHALTER & BEDIENUNGEN

# USED ON DHOLLANDIA



SWITCHES & CONTROLLERS - INTERRUPTEURS & COMMANDES - SCHALTER & BEDIENUNGEN

## ROTARY/PUSH SWITCHES & PARTS

INTERRUPTEURS ROTATIFS/POUSSOIRS & ACCESSOIRES - DREH-/DRUCKSCHALTER & ERSATZTEILE



0-II

**REF 111TP2964**



I-0-I

**REF 111TP2965**



II-0-I

**REF 111TP2966**



I-0-I

**REF 111TP2967**



II-0-I

**REF 111TP2968**



I-0-I

**REF 111TP2969**



0-I

**REF 111TP2970**



II-0-I

**REF 111TP2971**

# USED ON DHOLLANDIA



## ROTARY/PUSH SWITCHES & PARTS

INTERRUPTEURS ROTATIFS/POUSSOIRS & ACCESSOIRES - DREH-/DRUCKSCHALTER & ERSATZTEILE



I-0-II

**REF 111TP9872**



I-0-I

**REF 111TP2972**



II-0-I

**REF 111TP2973**



II-0-I - 2 x NO

**REF 111TP2974**



I-0-I - 4 x NO

**REF 111TP2975**



I-0-I - 3 x NO

**REF 111TP9873**



4 x NC

**REF 111TP9874**



TM

**REF 111TP2976**

SWITCHES & CONTROLLERS - INTERRUPTEURS & COMMANDES - SCHALTER & BEDIENUNGEN

# USED ON DHOLLANDIA



SWITCHES & CONTROLLERS - INTERRUPTEURS & COMMANDES - SCHALTER & BEDIENUNGEN

## ROTARY/PUSH SWITCHES & PARTS

INTERRUPTEURS ROTATIFS/POUSSOIRS & ACCESSOIRES - DREH-/DRUCKSCHALTER & ERSATZTEILE



TM

**REF 111TP2977**



1 x NO

**REF 111TP2978**



2 x NO

**REF 111TP2979**



TM

**REF 111TP2980**



TM

**REF 111TP9875**



Thread: M30 x 1,5 mm

**REF 111TP2981**



- Built in diameter: 28,3 mm
- Diameter knob: 40 mm

**REF 112TP9906**

# USED ON DHOLLANDIA



## CONTACT ELEMENTS

BLOCS DE CONTACT - KONTAKTELEMENTE



1 x NO

**REF 111TP2999**



1 x NC

**REF 111TP3000**



2 x NO

**REF 111TP3001**



2 x NC

**REF 111TP3002**



1 x NO - 1 x NC

**REF 111TP3003**



1 x NO

**REF 111TP3009**



1 x NC

**REF 111TP3010**



1 x NO

**REF 111TP3007**

SWITCHES & CONTROLLERS - INTERRUPTEURS & COMMANDES - SCHALTER & BEDIENUNGEN

# USED ON DHOLLANDIA



SWITCHES & CONTROLLERS - INTERRUPTEURS & COMMANDES - SCHALTER & BEDIENUNGEN

## CONTACT ELEMENTS

BLOCS DE CONTACT - KONTAKTELEMENTE



1 x NC

**REF 111TP3008**



1 x NO

**REF 111TP3004**



2 x NO

**REF 111TP3005**



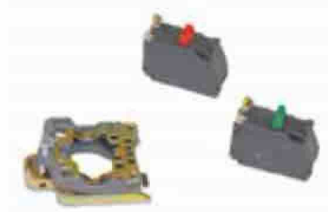
4 x NO

**REF 111TP3006**



1 x NO

**REF 111TP3012**



1 x NO - 1 x NC

**REF 111TP3013**



2 x NO

**REF 111TP3014**



1 x NO - 1 x NC

**REF 111TP8407**



# USED ON DHOLLANDIA



## CONTACT ELEMENTS

BLOCS DE CONTACT - KONTAKTELEMENTE



3 x NO

**REF 111TP3015**



Mounting

**REF 111TP8408**



Mounting

**REF 111TP3070**



Diameter: 30 mm

**REF 111TP3016**



- Voltage: 250 V
- Amperage: 5 A
- IP67

**REF 111TP3017**



- Voltage: 250 V
- Amperage: 5 A
- IP67

**REF 111TP3030**



EA0

**REF 111TP3011**

SWITCHES & CONTROLLERS - INTERRUPTEURS & COMMANDES - SCHALTER & BEDIENUNGEN

# USED ON DHOLLANDIA



SWITCHES & CONTROLLERS – INTERRUPTEURS & COMMANDES – SCHALTER & BEDIENUNGEN

## BATTERY/EMERGENCY SWITCHES & PARTS

COUPE BATTERIE/INTERRUPTEURS D'ARRÊT D'URGENCE & ACCESSOIRES – BATTERIE-/NOTSTOPPSCHALTER & ERSATZTEILE



Amperage: 100/500 A (5 sec)

**REF 111TP3018**



Amperage: 150/1000 A (5 sec)

**REF 111TP3019**



Diameter: 40 mm

**REF 111TP8409**



Two functions – 1-pin and square

**REF 111TP3020**



**HYDEM**

HYDEM version, 1-pin and 2-pin

**REF 111TP8410**



Two functions – 1-pin and square

**REF 111TP3024**



**HYDEM**

HYDEM version, 1-pin and 2-pin

**REF 111TP9471**



Diameter: 30 mm

**REF 111TP3022**



Amperage: 200 A

**REF 111TP3025**



Amperage: 200 A

**REF 111TP3023**

# USED ON DHOLLANDIA



## LIMIT/MICRO SWITCHES

INTERRUPTEURS DE FIN DE COURSE/MICROÏNTERUPTEURS - END-/MIKROSCHALTER



- Amperage: 4 A
- NO/NO

**REF 111TP3026**



- Amperage: 4 A
- NO/NC

**REF 111TP3027**



- Amperage: 1 A
- NO/NC

**REF 111TP3028**



- Amperage: 3 A
- NO/NC

**REF 111TP3029**



- Amperage: 1,5 A
- NO/NC

**REF 111TP3031**

See chapter Universal parts on page 711 for more parts.

## SENSORS & SWITCHES

CAPTEURS & INTERRUPTEURS - SENSOREN & SCHALTER



Length: 450 mm

**REF 111TP8414**



Length: 450 mm

**REF 111TP3059**

SWITCHES & CONTROLLERS - INTERRUPTEURS & COMMANDES - SCHALTER & BEDIENUNGEN

# USED ON DHOLLANDIA



SWITCHES & CONTROLLERS - INTERRUPTEURS & COMMANDES - SCHALTER & BEDIENUNGEN

## CONTROL BOXES & PARTS

BOÎTIERS DE CONTRÔLE & ACCESSOIRES - BEDIENKÄSTEN & ERSATZTEILE



- Length: 350 mm
- Width: 180 mm
- Height: 180 mm

**REF 111TP3032**



- Length: 350 mm
- Width: 180 mm
- Height: 180 mm

**REF 111TP3058**



Used on REF 111TP3058

**REF 111TP3038**



- Length: 315 mm
- Width: 240 mm
- Height: 140 mm

**REF 111TP3033**



- Length: 330 mm
- Width: 185 mm
- Height: 170 mm
- PVC

**REF 111TP3034**



- Length: 310 mm
- Width: 154 mm
- Height: 130 mm

**REF 111TP3035**



- Length: 320 mm
- Width: 120 mm
- Height: 120 mm

**REF 111TP8411**



- Length: 308 mm
- Width: 170 mm
- Height: 157 mm
- 2002

**REF 111TP3036**

# USED ON DHOLLANDIA



## CONTROL BOXES & PARTS

BOÎTIERS DE CONTRÔLE & ACCESSOIRES – BEDIENKÄSTEN & ERSATZTEILE



- Length: 301 mm
- Width: 145 mm
- Height: 145 mm
- 2002

**REF 111TP3037**



- Length: 390 mm
- Width: 390 mm
- Height: 315 mm

**REF 111TP3039**



- Length: 639 mm
- Height: 242 mm
- Alu

**REF 111TP3040**



- Length: 241 mm
- Height: 238 mm

**REF 111TP3041**



- Length: 315 mm
- Height: 240 mm

**REF 111TP3042**



- Length: 325 mm
- Height: 170 mm

**REF 111TP3043**



- Length: 305 mm
- 2002-...

**REF 111TP3044**



- Length: 300 mm
- 2008-...

**REF 111TP3045**

SWITCHES & CONTROLLERS – INTERRUPTEURS & COMMANDES – SCHALTER & BEDIENUNGEN

# USED ON DHOLLANDIA



SWITCHES & CONTROLLERS - INTERRUPTEURS & COMMANDES - SCHALTER & BEDIENUNGEN

## CONTROL BOXES & PARTS

BOÎTIERS DE CONTRÔLE & ACCESSOIRES - BEDIENKÄSTEN & ERSATZTEILE



- Length: 338 mm
- 2009-....

**REF 111TP2423**



- Length: 290 mm
- Width: 135 mm
- 2002-...

**REF 111TP3046**



3-button

**REF 111TP8412**



1-button

**REF 111TP8413**



- Length: 103,5 mm
- Height: 65 mm

**REF 111TP3047**



- Length: 285 mm
- Height: 125 mm
- 2008-...

**REF 111TP3048**



- Length: 320 mm
- Width: 130 mm
- ...-2010

**REF 111TP3049**



- Length: 410 mm
- Width: 54 mm
- Height: 155 mm

**REF 111TP3050**

# USED ON DHOLLANDIA



## CONTROL BOXES & PARTS

BOÎTIERS DE CONTRÔLE & ACCESSOIRES – BEDIENKÄSTEN & ERSATZTEILE



- Length: 306 mm
- Width: 75 mm
- Height: 113 mm

**REF 111TP3051**



- Length: 300 mm
- Lock PVC cover

**REF 111TP3052**



Lock complete – 1992–1995

**REF 111TP3053**



- Diameter: 2 x 5 mm
- Length: 101 mm
- Width: 18 mm
- Height: 10 mm

**REF 111TP3054**



- Length: 300 mm
- Use on PVC cover

**REF 111TP3055**



Thread: M5 x 50 mm

**REF 111TP3056**



- Length: 311 mm
- Width: 111 mm
- Height: 40 mm
- 2008–...

**REF 111TP3057**

SWITCHES & CONTROLLERS – INTERRUPTEURS & COMMANDES – SCHALTER & BEDIENUNGEN

# USED ON DHOLLANDIA



SWITCHES & CONTROLLERS - INTERRUPTEURS & COMMANDES - SCHALTER & BEDIENUNGEN

## CONTROLLERS

COMMANDES - BEDIENUNGEN



Operate your tail lift with our high-quality hand controls available in 2- or 3-button configurations.

**Your benefits:**

- Maximum comfort, high productivity
- Unique ergonomic design
- Easy push system
- With magnet and ring for easy handling
- Rubber shock absorber
- Usable in cold and wet environments

**Specifications:**

- Protection (IP): IP44 according to EN 60 529
- Contact type: Mafelec (push button)
- Max amperage: 10 A
- Operating temperature: -25 °C up to 60 °C
- Material: ABS plastic with rubber buffer
- Cable: polyurethane 3,5 metres working length

**Applications:**

Tail lifts, winches, cranes to name a few

**Available colours:**

Orange, yellow, green, red and blue

**Available in different colours and in 2- or 3-button configurations. Ask for your quantity discount. All models are equipped with Mafelec switches.**

**2-button hand controls with cable and connector**

Make	Colour	REF
Dhollandia	Orange	111TP5193

**3-button hand controls with cable and connector**

Make	Colour	REF
Dhollandia	Orange	111TP5204
Dhollandia passenger lifts	Orange	111TP5205

**2-button hand controls without cable**

Colour	REF
Orange	111TP5214
Blue	111TP5215
Red	111TP5216
Yellow	111TP5217
Green	111TP5218

**3-button hand controls without cable**

Colour	REF
Orange	111TP5219
Blue	111TP5220
Yellow	111TP5221
Red	111TP5222
Green	111TP5223

## CONTROLLERS

COMMANDES - BEDIENUNGEN



- 2 x NO
- Mafelec switch

**REF 111TP8092**



- 1 x NO + 1 x NC
- Mafelec switch

**REF 111TP8093**



# USED ON DHOLLANDIA



## CONTROLLERS

COMMANDES - BEDIENUNGEN



- Complete control
- 2-button
- Mafelec

**REF 111TP8416**



- Complete control
- 3-button
- Mafelec

**REF 111TP8417**



- Length: 115 mm
- Width: 65 mm
- Height: 10 mm

**REF 111TP2946**



- Length: 124 mm
- Width: 36 mm
- Height: 59 mm

**REF 111TP2947**



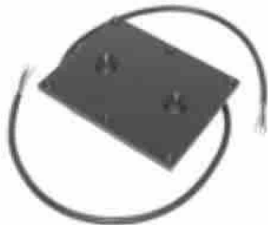
- Length: 155 mm
- Width: 35 mm
- Height: 70 mm

**REF 111TP2948**



- Length: 157 mm
- Width: 60 mm
- Height: 55 mm

**REF 111TP8405**



Button switch for cooled trailer

**REF 111TP2950**



- Voltage: 24 V
- With heating cable

**REF 111TP2951**

See chapter Universal parts on page 712 for more parts.

SWITCHES & CONTROLLERS - INTERRUPTEURS & COMMANDES - SCHALTER & BEDIENUNGEN

# USED ON DHOLLANDIA



SWITCHES & CONTROLLERS – INTERRUPTEURS & COMMANDES – SCHALTER & BEDIENUNGEN

## FOOT CONTROLLERS & PARTS

COMMANDES AU PIED & ACCESSOIRES – FUSSSCHALTER & ERSATZTEILE



Diameter: 87,5 x 46,5 mm

**REF 111TP2984**



Diameter: 46 x 12 mm

**REF 111TP5013**



Diameter: 40 mm

**REF 111TP2986**



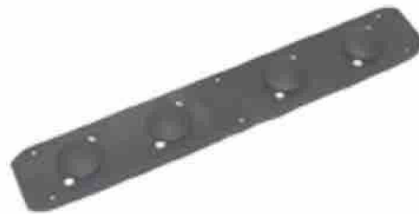
Diameter: 30 mm

**REF 111TP2987**



- Length: 425 mm
- Width: 72 mm

**REF 111TP2985**



- Length: 465 mm
- Width: 75 mm

**REF 111TP2989**



- Length: 530 mm
- Width: 100 mm
- ...-2010 – alu

**REF 111TP2990**



- Length: 450 mm
- Width: 100 mm

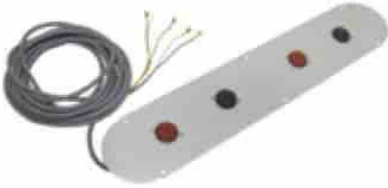
**REF 111TP2991**

# USED ON DHOLLANDIA



## FOOT CONTROLLERS & PARTS

COMMANDES AU PIED & ACCESSOIRES – FUSSSCHALTER & ERSATZTEILE



- Length: 530 mm
- Width: 100 mm
- < 2010 – alu

**REF 111TP5132**



- Length: 450 mm
- Width: 75 mm

**REF 111TP2992**



- Diameter: 4 x 4 mm
- Length: 38 mm
- Width: 37 mm

**REF 111TP2993** – Black  
**REF 111TP2994** – Red



- Diameter: 40,5/61,5 mm
- Thread: M4 x 8 mm

**REF 111TP2995**



- Length: 61 mm
- Width: 34 mm
- Height: 24 mm

**REF 111TP2996**



- Diameter: 2 x 4 mm
- Length: 40 mm
- Width: 39 mm

**REF 111TP2997**



TM

**REF 111TP2998**



For 1 x REF 111TP3030

**REF 111TP2982**

SWITCHES & CONTROLLERS – INTERRUPTEURS & COMMANDES – SCHALTER & BEDIENUNGEN

# USED ON DHOLLANDIA



SWITCHES & CONTROLLERS - INTERRUPTEURS & COMMANDES - SCHALTER & BEDIENUNGEN

## FOOT CONTROLLERS & PARTS

COMMANDES AU PIED & ACCESSOIRES - FUSSSCHALTER & ERSATZTEILE



For 2 x REF 111TP3030

**REF 111TP2983**



- Voltage: 250 V
- Amperage: 5 A
- Length: 500 mm
- IP66

**REF 111TP3060**



- Voltage: 250 V
- Amperage: 4 A
- Length: 500 mm

**REF 111TP3061**



TM 2008-...

**REF 111TP3062**



TM 2008-... - set

**REF 111TP3063**

# USED ON DHOLLANDIA



## VARIOUS CONTROLLER PARTS

DIVERSES PIÈCES DE COMMANDE – WEITERE BEDIENUNG-ERSATZTEILE



- Length: 125 mm
- Width: 80 mm
- Height: 60 mm

**REF 111TP3069**



- Length: 129 mm
- Width: 52 mm
- Height: 53 mm

**REF 111TP3072**



- Diameter: 30 mm
- Used on REF 111TP2981

**REF 111TP3076**



- Diameter: 34 mm
- Thread: M30 x 1,5 mm
- Used on REF 111TP2981

**REF 111TP8418**



Diameter: 28/32 – 16 mm

**REF 111TP3073**



Diameter: 18 x 14 mm

**REF 111TP3074**



Diameter: 32 x 16 mm

**REF 111TP3075**



Diameter: 50 mm

**REF 111TP3078**

SWITCHES & CONTROLLERS – INTERRUPTEURS & COMMANDES – SCHALTER & BEDIENUNGEN

# USED ON DHOLLANDIA



CABLES & CONNECTORS – CÂBLES & CONNECTEURS – KABEL & STECKER

## BATTERY CABLES

CÂBLES DE BATTERIE – BATTERIEKABEL



Wire size: 25 mm<sup>2</sup>

**REF 111TP3079**



Wire size: 35 mm<sup>2</sup>

**REF 111TP3080** – Sold per metre

**REF 111TP3081** – Sold per 9 m

**REF 111TP3082** – Sold per 18 m

**REF 111TP1054** – Sold per 25 m



Wire size: 50 mm<sup>2</sup>

**REF 111TP3083** – Sold per metre

**REF 111TP1055** – Sold per 25 m

See chapter Universal parts on page 717 for more parts.

## KOSTAL CABLES

CÂBLES KOSTAL – KOSTALKABEL



**HYDEM**

- Length: 4000 mm
- Thread: M24 x 1 mm/M27 x 1 mm

**REF 111TP5133**

# USED ON DHOLLANDIA

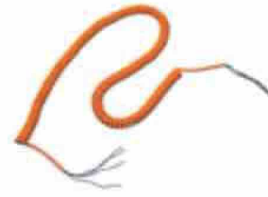


## SPIRAL CABLES

CÂBLES SPIRALÉS - SPIRALKABEL



Diameter mm	Length mm	Wire size mm <sup>2</sup>	REF
10/25	3500	4 x 0,75	<b>111TP9878</b>



Diameter mm	Length mm	Wire size mm <sup>2</sup>	REF
14/25	4500	4 x 0,75	<b>111TP3089</b>



Diameter mm	Length mm	Wire size mm <sup>2</sup>	REF
15/29	2500	5 x 0,75	<b>111TP3088</b>



Diameter mm	Length mm	Wire size mm <sup>2</sup>	REF
15/30	2500	7 x 0,75	<b>111TP3090</b>

See chapter Universal parts on page 718 for more parts.

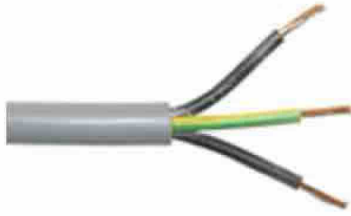
# USED ON DHOLLANDIA



CABLES & CONNECTORS - CÂBLES & CONNECTEURS - KABEL & STECKER

## CABLES & PARTS

CÂBLES DE BATTERIE - KABEL & ERSATZTEILE



Wire size: 3 x 1 mm<sup>2</sup>

**REF 111TP3091**



Wire size: 4 x 1 mm<sup>2</sup>

**REF 111TP3092**



Wire size: 5 x 1 mm<sup>2</sup>

**REF 111TP3093**



Wire size: 9 x 1 mm<sup>2</sup>

**REF 111TP3094**



- Voltage: 24 V
- Wattage: 3,51 W
- Length: 440 mm
- Heating cable for REF 111TP2951

**REF 111TP3095**



# USED ON DHOLLANDIA



## CONNECTORS & PARTS

CONNECTEURS & ACCESSOIRES – STECKER & ERSATZTEILE



- Amperage: 160 A
- Wire size: 35 mm<sup>2</sup>
- SBE160

**REF 111TP3097**



- Amperage: 175 A
- Wire size: 50 mm<sup>2</sup>
- SB175

**REF 111TP3098**



- Amperage: 350 A
- Wire size: 70 mm<sup>2</sup>
- SBX350

**REF 111TP3099**



- Amperage: 250 A
- Wire size: 50 mm<sup>2</sup>
- Rema

**REF 111TP3100**



- Amperage: 250 A
- Wire size: 50 mm<sup>2</sup>
- Rema

**REF 111TP3101**



- Amperage: 250 A
- Wire size: 50 mm<sup>2</sup>
- Ravioli

**REF 111TP9835**



- Amperage: 250 A
- Wire size: 50 mm<sup>2</sup>
- Ravioli

**REF 111TP9836**



- Amperage: 160 A
- HYDEM version

**REF 111TP9837**

CABLES & CONNECTORS – Câbles & Connecteurs – Kabel & Stecker

# USED ON DHOLLANDIA



CABLES & CONNECTORS - CÂBLES & CONNECTEURS - KABEL & STECKER

## CONNECTORS & PARTS

CONNECTEURS & ACCESSOIRES - STECKER & ERSATZTEILE



- Amperage: 250 A
- Wire size: 40 mm<sup>2</sup>
- HYDEM version

**REF 111TP9838**



- Voltage: 220 V
- Length cable: 400 mm

**REF 111TP3102**



Voltage: 220 V

**REF 111TP3103**



- 7-pole
- DIN 72577
- ISO 1724

**REF 111TP3104**



- 7-pole
- DIN 72577
- ISO 1724

**REF 111TP3105**



Hirschmann (GSA)

**REF 111TP3106**

See chapter Universal parts on page 719 for more parts.

# USED ON DHOLLANDIA



## FLASHER LIGHTS & PARTS

LAMPES TORCHES & ACCESSOIRES – BLINKLEUCHTEN & ERSATZTEILE



- Voltage: 12/24 V
- LED

**REF 111TP3107**



- Voltage: 12/24 V
- LED mini

**REF 111TP8420**



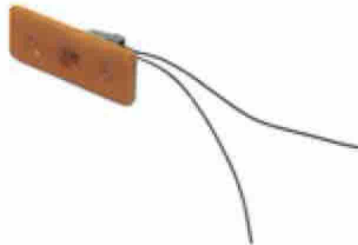
- Voltage: 12/24 V
- Universal

**REF 111TP4572**



Diameter: 64 x 42 mm

**REF 111TP3108**



- Length: 120 mm
- Width: 45 mm
- DHV

**REF 111TP3109**

See chapter Universal parts on page 725 for more parts.

ELECTRICAL PARTS – PIÈCES ÉLECTRIQUES – ELEKTRISCHE ERSATZTEILE

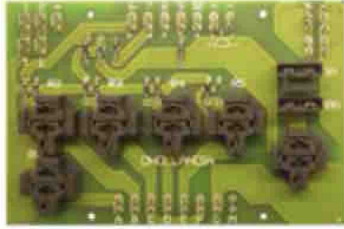
# USED ON DHOLLANDIA



ELECTRICAL PARTS – PIÈCES ÉLECTRIQUES – ELEKTRISCHE ERSATZTEILE

## PRINTED CIRCUIT BOARDS/CONTROLLERS

CIRCUITS IMPRIMÉS/COMMANDES – LEITERPLATTEN/BEDIENUNGEN



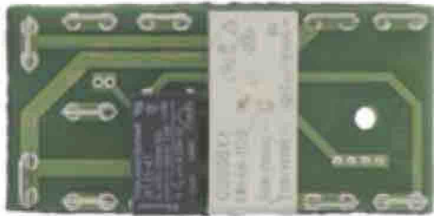
1992-...

**REF 111TP3110**



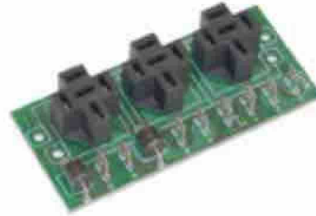
1992-...

**REF 111TP3111**



Voltage: 12V

**REF 111TP8421**



Used on REF 111TP2946

**REF 111TP3112**



New model

**REF 111TP8422**



Complete DH-SM

**REF 111TP3113**

## USED ON DHOLLANDIA



## CABLE SHOES &amp; BATTERY CLAMPS

CONNECTEURS &amp; PINCES DE BATTERIE - KABELSCHUHE &amp; BATTERIEKLAMMERN



Diameter mm	REF
17,5 (+)	<a href="#">111TP3121</a>
115,7 (-)	<a href="#">111TP3122</a>



Diameter mm	Wire size mm <sup>2</sup>	REF
6	25	<a href="#">111TP3123</a>
10	35	<a href="#">111TP3124</a>
10	50	<a href="#">111TP3125</a>



Diameter mm	Length mm	Colour	Info	REF
24	4500	Black	(-)	<a href="#">111TP3096</a>
24	4500	Red	(+)	<a href="#">111TP988</a>

ELECTRICAL PARTS - PIÈCES ÉLECTRIQUES - ELEKTRISCHE ERSATZTEILE

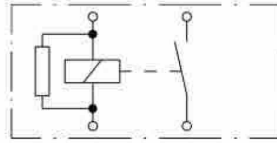
# USED ON DHOLLANDIA



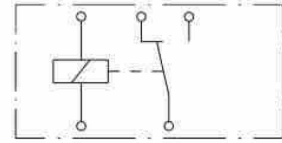
ELECTRICAL PARTS – PIÈCES ÉLECTRIQUES – ELEKTRISCHE ERSATZTEILE

## RELAYS

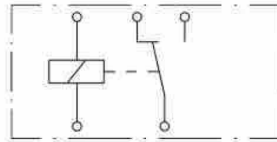
RELAIS – RELAIS



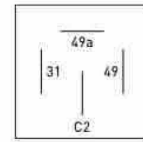
Voltage	Amperage	REF
12	30	<a href="#">111TP3114</a>



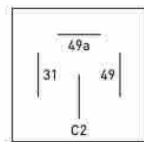
Voltage	Amperage	REF
12	30	<a href="#">111TP3115</a>



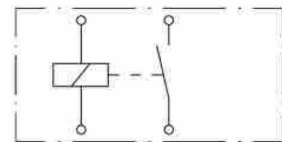
Voltage	Amperage	REF
24	20	<a href="#">111TP3116</a>



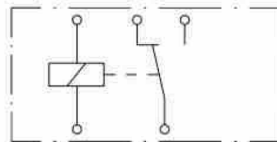
Voltage	Info	REF
12	Wattage: 170 max	<a href="#">111TP3117</a>



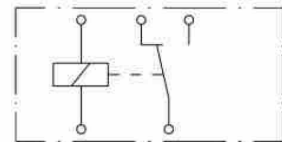
Voltage	Info	REF
24	Wattage: 170 max	<a href="#">111TP3118</a>



Voltage	Amperage	REF
24	22	<a href="#">111TP3119</a>



Voltage	REF
12	<a href="#">111TP8580</a>



Voltage	REF
12	<a href="#">111TP8581</a>

See chapter Universal parts on page 727 for more parts.

# USED ON DHOLLANDIA



## FUSES

FUSIBLES - SICHERUNGEN



DIN 72581/2

- REF 111TP3126** - Amperage: 75 A
- REF 111TP3127** - Amperage: 100 A
- REF 111TP3128** - Amperage: 200 A
- REF 111TP3129** - Amperage: 300 A



- REF 111TP3130** - Amperage: 100 A
- 111TP3131** - Amperage: 200 A
- REF 111TP9879** - Amperage: 250 A
- REF 111TP3132** - Amperage: 300 A



Mega

- REF 111TP3133** - Amperage: 100 A, black\*
- REF 111TP8423** - Amperage: 150 A, orange\*
- REF 111TP8424** - Amperage: 175 A, white\*
- REF 111TP8000** - Amperage: 200 A, blue\*
- REF 111TP3134** - Amperage: 250 A, pink\*



- Dimensions: 19 x 20 mm
- DIN 72581/med

- REF 111TP3136** - Amperage: 3 A, pink
- REF 111TP3137** - Amperage: 15 A, blue
- REF 111TP3138** - Amperage: 30 A, green



- Amperage: 80 A
- DIN 72581/2

**REF 111TP3139**



- Amperage: 250 A
- DIN 43560/1

**REF 111TP3135**

See chapter Universal parts on page 728 for more parts.

ELECTRICAL PARTS - PIÈCES ÉLECTRIQUES - ELEKTRISCHE ERSATZTEILE

\*The colour codes are not always correct, this is just an indication.

# USED ON DHOLLANDIA



ELECTRICAL PARTS – PIÈCES ÉLECTRIQUES – ELEKTRISCHE ERSATZTEILE

## FUSE HOLDERS & PARTS

PORTE-FUSIBLES & ACCESSOIRES – SICHERUNGSHALTER & ERSATZTEILE



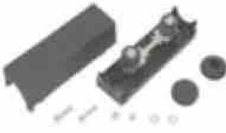
DIN 72581/med

**REF 111TP3140**



Thread: M10

**REF 111TP3145**



- DIN 43560/1
- Mega
- CNN/ANN

**REF 111TP3141**



- HYDEM version
- DIN 43560/1
- Mega
- CNN/ANN

**REF 111TP9470**



DIN 72581/med

**REF 111TP3142**



DIN 72581/med

**REF 111TP3143**



Mega

**REF 111TP3144**



Thread: M8

**REF 111TP3146**



- Length: 32,5 mm
- Width: 19 mm
- Height: 17 mm

**REF 111TP3147**

See chapter Universal parts on page 732 for more parts.



# USED ON DHOLLANDIA



## THYRISTORS & DIODES

THYRISTORS & DIODES – THYRISTOREN & DIODEN



- Amperage: 70 A
- Length: 120 mm
- Width: 100 mm
- Height: 65 mm

**REF 111TP3148**



- Voltage: 1000 V
- Amperage: 3 A

**REF 111TP3149**



Diameter: 12 mm

**REF 111TP3150**



Diameter: 18 mm

**REF 111TP3151**



Diameter: 21 mm

**REF 111TP3152**



Length: 35 mm

**REF 111TP3157**



- Metric cable gland and nut
- With extra reducing seal
- Used on cables with smaller outer diameter

**REF 111TP3153** – Thread: M20 x 1,5 mm

**REF 111TP3154** – Thread: M25 x 1,5 mm

**REF 111TP3155** – Thread: PG11

**REF 111TP3156** – Thread: PG13,5



Length: 30 mm

**REF 111TP3158**



Dimensions: 17,7 x 17,7 mm

**REF 111TP3159**

ELECTRICAL PARTS – PIÈCES ÉLECTRIQUES – ELEKTRISCHE ERSATZTEILE

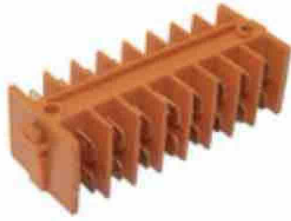
# USED ON DHOLLANDIA



ELECTRICAL PARTS - PIÈCES ÉLECTRIQUES - ELEKTRISCHE ERSATZTEILE

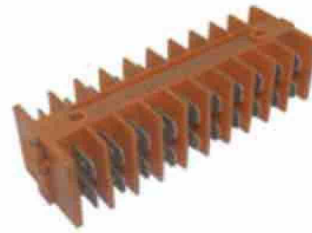
## VARIOUS ELECTRICAL PARTS

DIVERSES PIÈCES ÉLECTRIQUES - WEITERE ELEKTRISCHE ERSATZTEILE



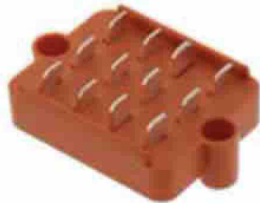
8-pole

**REF 111TP3160**



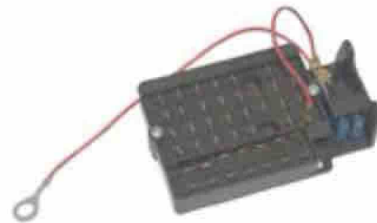
10-pole

**REF 111TP3161**



2008-...

**REF 111TP8425**



2010-

**REF 111TP3162**



8-pole

**REF 111TP3163**



Female

**REF 111TP3164**



- Voltage: 24 V
- Amperage: 5 A

**REF 111TP3165**



Voltage: 12 V

**REF 111TP8168**

# USED ON DHOLLANDIA



## VARIOUS ELECTRICAL PARTS

DIVERSES PIÈCES ÉLECTRIQUES - WEITERE ELEKTRISCHE ERSATZTEILE



Voltage: 24 V

**REF 111TP8426**



- Diameter: 1,5 mm
- Length: 12 mm
- Width: 7,5 mm

**REF 111TP3166**



Voltage: 24 V

**REF 111TP9839**

ELECTRICAL PARTS - PIÈCES ÉLECTRIQUES - ELEKTRISCHE ERSATZTEILE

## USED ON DHOLLANDIA



VARIOUS PARTS - DIVERSES PIÈCES - VERSCHIEDENE ERSATZTEILE

## BATTERY COVERS/HOUSINGS

COUVERCLES/LOGEMENTS BATTERIE - BATTERIEKÄSTEN/-DECKEL



- Length: 580 mm
- Width: 500 mm
- Height: 260 mm

REF 111TP3167



- Length: 640 mm
- Width: 545 mm
- Height: 200 mm
- ...-1992

REF 111TP3168

## DECALS

AUTOCOLLANTS - AUFKLEBER



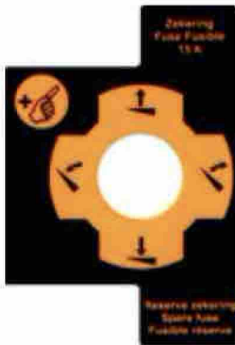
- Length: 131 mm
- Height: 78 mm
- Dutch

REF 111TP3169



- Length: 300 mm
- Height: 138

REF 111TP3170



- Length: 86 mm
- Height: 225 mm
- 2002

REF 111TP3171



- Length: 130,5 mm
- Height: 43,3 mm
- 2002

REF 111TP3172



- Length: 130,5 mm
- Height: 43,5 mm
- 2002

REF 111TP3173



- Length: 56 mm
- Height: 125 mm
- CE 2002

REF 111TP3174

# USED ON DHOLLANDIA



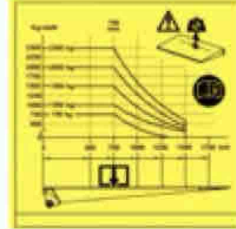
## DECALS

AUTOCOLLANTS – AUFKLEBER



- Length: 70 mm
- Height: 70 mm

**REF 111TP3175**



- Length: 115 mm
- Height: 115 mm

**REF 111TP3176**



- Length: 60 mm
- Height: 60 mm

**REF 111TP8427**



- Length: 150 mm
- Height: 150 mm

**REF 111TP8428**



- Length: 301 mm
- Height: 139 mm

**REF 111TP3177**

See chapter Universal parts on page 735 for more parts.

VARIOUS PARTS – DIVERSES PIÈCES – VERSCHIEDENE ERSATZTEILE

# USED ON DHOLLANDIA



NOTES – NOTIZEN

A large area of horizontal dotted lines for taking notes.