



**USED ON
DAUTEL**

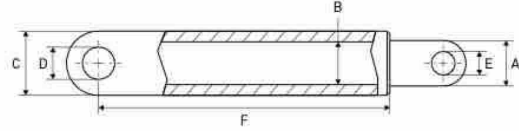
USED ON DAUTEL



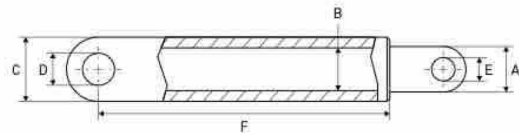
CYLINDERS - VÉRINS/CYLINDRES - ZYLINDER

LIFT CYLINDERS

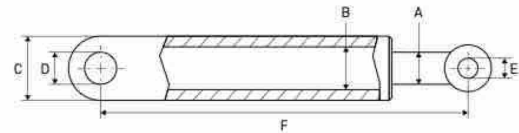
VÉRINS DE LEVAGE - HUBZYLINDER



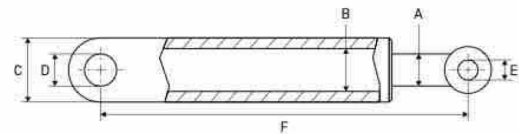
A mm	B mm	C mm	D mm	E mm	F mm	Info	REF	
							Cylinder	Seal kit
40	60	55	30	30	328	DLB36	111TP1985	111TP2009



A mm	B mm	C mm	D mm	E mm	F mm	Info	REF	
							Cylinder	Seal kit
55	30	90	30	30	486	DLB44 - 1500	111TP1986	111TP9364
70	50	90	30	30	499	DLB44 - 2000	111TP8229	111TP9364



A mm	B mm	C mm	D mm	E mm	F mm	Info	REF	
							Cylinder	Seal kit
55	53	70	35	35	595	DLB47	111TP1987	111TP2018
60	60	75	35	35	596	DLB47	111TP1988	111TP2019
70	60	85	35	35	596	DLB47	111TP1989	111TP2022
75	60	90	35	35	596	DLB47	111TP8230	111TP2024



A mm	B mm	C mm	D mm	E mm	F mm	Info	REF	
							Cylinder	Seal kit
30	55	70	30	30	520	DLB45	111TP1990	111TP2006
35	70	85	30	30	561,5	DLB45	111TP8231	111TP2007
35	80	95	30	30	566,5	DLB45	111TP8232	111TP2008

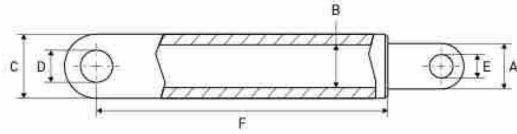
USED ON DAUTEL



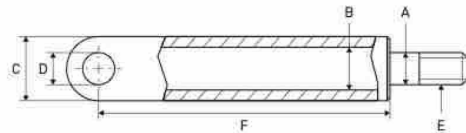
TILT CYLINDERS

VÉRIN D'INCLINAISON - SCHLIESSZYLINDER

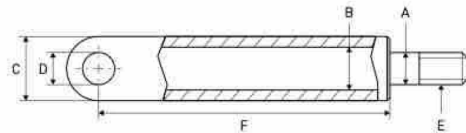
CYLINDERS - VÉRINS/CYLINDRES - ZYLINDER



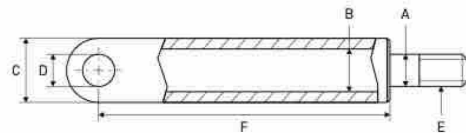
A mm	B mm	C mm	D mm	E mm	F mm	Info	REF	
							Cylinder	Seal kit
63	30	80	30	M38 x 2	415	DLB36	111TP8233	111TP2020



A mm	B mm	C mm	D mm	E mm	F mm	Info	REF	
							Cylinder	Seal kit
50	70	90	30	M48 x 1,5	535	DLB45	111TP1991	111TP9365



A mm	B mm	C mm	D mm	E mm	F mm	Info	REF	
							Cylinder	Seal kit
40	63	73	35	M36 - Ø 23	427	DLB47	111TP1992	111TP2012
45	70	80	35	M42 - Ø 28	470	DLB47	111TP1993	111TP2013
50	75	85	35	M48 - Ø 28	515	DLB47	111TP1994	111TP2017



A mm	B mm	C mm	D mm	E mm	F mm	Info	REF	
							Cylinder	Seal kit
40	63	75	30	M38 x 2	460	DLB45	111TP1995	111TP9366

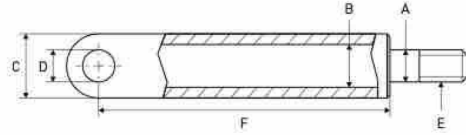
USED ON DAUTEL



CYLINDERS – VÉRINS/CYLINDRES – ZYLINDER

TILT CYLINDERS

VÉRIN D'INCLINAISON – SCHLISSZYLINDER



A mm	B mm	C mm	D mm	E mm	F mm	Info	REF	
							Cylinder	Seal kit
50	70	90	30	M48 x 1,5	665	DLB44/45 - 1500	111TP8234	111TP9365
50	70	90	30	M48 x 1,5	642	DLB44 - 2000	111TP8235	111TP9365

PRESSURE EXCHANGERS

ÉCHANGUERS DE PRESSION – DRUCKÜBERSETZER



1

2

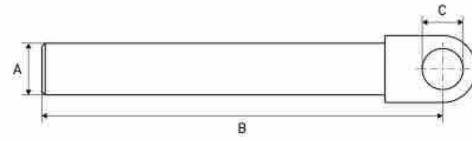
Fig	Diameter mm	Info	REF	
			Cylinder	Seal kit
1	40/55	DLB47	111TP8236	111TP2010
2	50/70	DLB47	111TP8238	111TP2016

USED ON DAUTEL

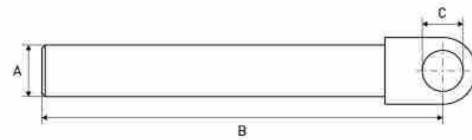


PISTON RODS

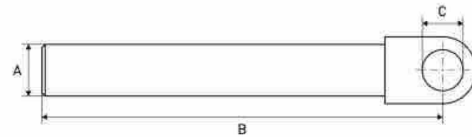
TIGES DE PISTON - KOLBENSTANGEN



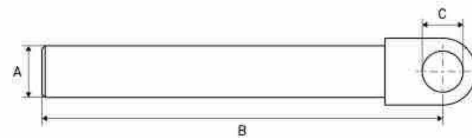
A mm	B mm	C mm	Info	REF
55	535	35	DLB47	111TP1996
60	530	35	DLB47	111TP1997
70	533	35	DLB47	111TP1998
75	545	35	DLB47	111TP1999



A mm	B mm	C mm	Info	REF
70	455	30	DLB44	111TP2001
70	474	30	DLB44	111TP2000



A mm	B mm	C mm	Info	REF
70	456	30	DLB46	111TP8239



A mm	B mm	C mm	Info	REF
40	305	30	DLB36 - used on REF 111TP1985	111TP2002

CYLINDER PARTS - PIÈCES DE CYLINDRE - ZYLINDER-ERSATZTEILE

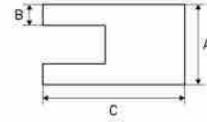
USED ON DAUTEL



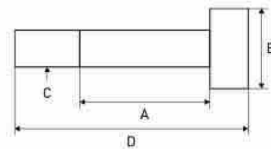
CYLINDER PARTS – PIÈCES DE CYLINDRE – ZYLINDER-ERSATZTEILE

PISTON RODS

TIGES DE PISTON – KOLBENSTANGEN



A mm	B mm	C mm	Info	REF
70	M48 x 1,5	200	DLB46	111TP8240



A mm	B mm	C mm	D mm	REF
50	70	M48 x 1,5	545	111TP2003
50	70	M48 x 1,5	554	111TP2004

USED ON DAUTEL



SEAL KITS

KITS DE JOINTS – DICHTUNGSSÄTZE



- Diameter: 30/50 mm
- DLB45

REF 111TP2006



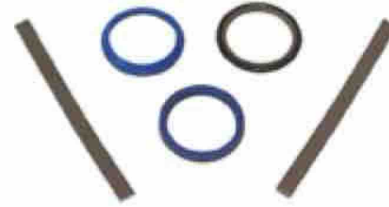
- Diameter: 35/70 mm
- DLB45

REF 111TP2007



- Diameter: 35/80 mm
- DLB45

REF 111TP2008



- Diameter: 40/48 mm
- DLB36

REF 111TP2009



- Diameter: 40/55 mm
- DLB47

REF 111TP2010



- Diameter: 40/63 mm
- DLB45

REF 111TP2011



- Diameter: 40/63 mm
- DLB47

REF 111TP2012



Diameter: 40/70 mm

REF 111TP8242

CYLINDER PARTS – PIÈCES DE CYLINDRE – ZYLINDER-ERSATZTEILE

USED ON DAUTEL



CYLINDER PARTS – PIÈCES DE CYLINDRE – ZYLINDER-ERSATZTEILE

SEAL KITS

KITS DE JOINTS – DICHTUNGSSÄTZE



- Diameter: 45/70 mm
- DLB47

REF 111TP2013



- Diameter: 45/70 mm
- HZ/NZ

REF 111TP2014



- Diameter: 45/70 mm
- DLB27

REF 111TP8243



- Diameter: 50/70 mm
- DLB44/45

REF 111TP2015



- Diameter: 50/70 mm
- DLB47

REF 111TP2016



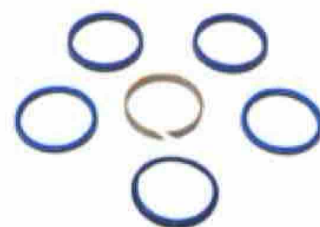
- Diameter: 50/75 mm
- DLB47

REF 111TP2017



- Diameter: 55/65 mm
- DLB47

REF 111TP2018



- Diameter: 60/67 mm
- DLB47

REF 111TP2019

USED ON DAUTEL



SEAL KITS

KITS DE JOINTS - DICHTUNGSSÄTZE



- Diameter: 63/75 mm
- DLB36

REF 111TP2020



- Diameter: 63/75 mm
- DLB44

REF 111TP2021



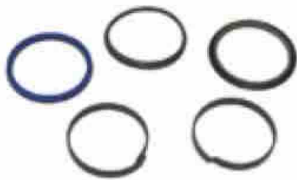
- Diameter: 70/80 mm
- DLB47

REF 111TP2022



- Diameter: 70/82 mm
- DLB44/46

REF 111TP2023



- Diameter: 75/85 mm
- DLB47

REF 111TP2024



- Diameter: 50 mm
- Length: 168 mm
- Width: 14,7 mm
- DLB36

REF 111TP8241

CYLINDER PARTS - PIÈCES DE CYLINDRE - ZYLINDER-ERSATZTEILE

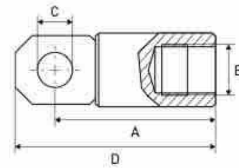
USED ON DAUTEL



CYLINDER PARTS - PIÈCES DE CYLINDRE - ZYLINDER-ERSATZTEILE

EXTENSIONS

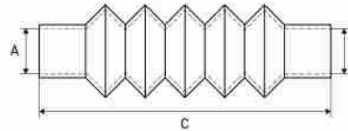
RALLONGES - VERLÄNGERUNG



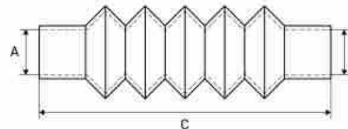
A mm	B	C mm	D mm	REF
305	M48	30	330	111TP2005

DUST COVERS

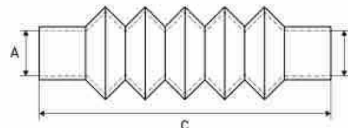
CACHE-POUSSIÈRE - STAUBKAPPE



Diameter		Length Min - C - Max mm	REF		
A mm	B mm		Cover	Clamp 1	Clamp 2
55	75	150 - 280 - 330	111TP8245	111TP4916	111TP4918



Diameter		Length Min - C - Max mm	REF		
A mm	B mm		Cover	Clamp 1	Clamp 2
50	70	120 - 310 - 500	111TP2025	111TP4916	111TP4918



Diameter		Length Min - C - Max mm	REF		
A mm	B mm		Cover	Clamp 1	Clamp 2
55	80	115 - 270 - 500	111TP2026	111TP4999	111TP4999

USED ON DAUTEL



PROTECTIVE COVERS

HOUSESSE DE PROTECTION - SCHUTZROHRE



Diameter		Length		REF	
A	B	C	Cover	Clamp	
mm	mm	mm			
90	90	325	111TP2027	111TP4999	



Diameter		Length		REF	
A	B	C	Cover	Clamp	
mm	mm	mm			
55	85	335	111TP2028	111TP4999	



Diameter		Length		REF	
A	B	C	Cover	Clamp	
mm	mm	mm			
60	95	330	111TP2029	111TP5004	



Diameter		Length		REF	
A	B	C	Cover	Clamp	
mm	mm	mm			
70	105	310	111TP2030	111TP5004	

CYLINDER PARTS - PIÈCES DE CYLINDRE - ZYLINDER-ERSATZTEILE

USED ON DAUTEL



CYLINDER PARTS – PIÈCES DE CYLINDRE – ZYLINDER-ERSATZTEILE

PROTECTIVE COVERS

HOUSES DE PROTECTION – SCHUTZROHRE



Diameter		Length		REF	
A	B	C	Cover	Clamp	
mm	mm	mm			
65	105	360	111TP2031	111TP5004	



Diameter		Length		REF	
A	B	C	Cover	Clamp	
mm	mm	mm			
100	100	275	111TP2032	111TP5004	



Diameter		Length		REF	
A	B	C	Cover	Clamp	
mm	mm	mm			
45	75	235	111TP2033	111TP5004	



Diameter		Length		REF	
A	B	C	Cover	Clamp	
mm	mm	mm			
75	90	335	111TP8246	111TP5004	

USED ON DAUTEL



COVERS

COUVERCLES - ABDECKUNGEN



Length mm	Height mm	Width mm	REF
370	180	325	111TP2035



Length mm	Height mm	Width mm	REF
340	130	295	111TP2036



Length mm	Height mm	Width mm	REF
435	195	305	111TP2037



Length mm	Height mm	Width mm	REF
890	150	255	111TP8247



Length mm	Height mm	Width mm	REF
343	94	160	111TP8248



Length mm	Width mm	REF
630	300	111TP8249



Length mm	Height mm	Width mm	REF
620	132	255	111TP8250

POWER PACKS & PARTS - GROUPE HYDRAULIQUE & ACCESSOIRES - AGGREGATE & ERSATZTEILE

USED ON DAUTEL



POWER PACKS & PARTS - GROUPE HYDRAULIQUE & ACCESSOIRES - AGGREGATE & ERSATZTEILE

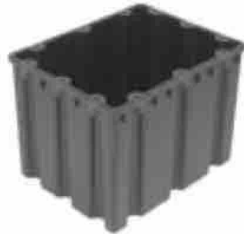
TANKS & OIL RESERVOIRS RÉSERVOIRS (D'HUILE) - TANKS & ÖLBEHÄLTER



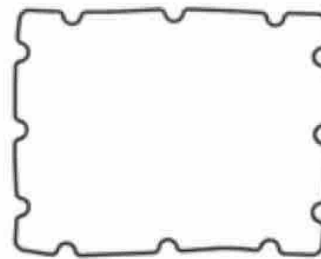
Length mm	Height mm	Width mm	REF
245	147	150	111TP2038



Length mm	Width mm	REF
247	2	111TP2034



Length mm	Height mm	Width mm	REF
265	195	210	111TP2039



Length mm	Width mm	REF
265	210	111TP8257



Length mm	Height mm	Width mm	REF
326	144	150	111TP8254



Length mm	Diameter mm	REF
305	105	111TP8255



Length mm	Height mm	Width mm	REF
285	190	210	111TP8256



Length mm	Height mm	Width mm	Diameter mm	Info	REF
200	165	175	188	X1A	111TP9510

USED ON DAUTEL



FILTERS & BREATHERS

FILTRES & RENIFLARDS - FILTER & ENTLÜFTER



Length: 430 mm

REF 111TP2040



Length: 305 mm

REF 111TP2041



Diameter: 15,3 x 63 mm

REF 111TP8259

DRAIN PLUGS

BOUCHONS DE VIDANGE - ABLASSSCHRAUBEN



- Thread: 3/8"
- BSP

REF 111TP2042

POWER PACKS & PARTS - GROUPE HYDRAULIQUE & ACCESSOIRES - AGGREGATE & ERSATZTEILE

USED ON DAUTEL



MOTORS, PUMPS & PARTS - MOTEURS, POMPES & ACCESSOIRES - MOTOREN, PUMPEN & ERSATZTEILE

ELECTRIC MOTORS

MOTEURS ÉLECTRIQUES - ELEKTROMOTOREN



Voltage	kW	Rotation	REF
12	2,0	CW >>	111TP2043
24	2,0	CW >>	111TP2044



Voltage	kW	Rotation	REF
12	0,8	<< CCW	111TP2045
24	1,2	<< CCW	111TP2046



Voltage	kW	Rotation	REF
24	3,0	CW >>	111TP2047



Voltage	kW	Rotation	REF
24	3,0	CW >>	111TP2048



Voltage	kW	Rotation	REF
24	3,0	<< CCW	111TP2049



Voltage	kW	Rotation	REF
24	3,0	CW >>	111TP2050



Voltage	kW	Rotation	REF
12	2,0	<< CCW	111TP2051
24	2,0	<< CCW	111TP2052



Voltage	kW	Rotation	REF
12	2,0	CW >>	111TP2053
24	2,0	CW >>	111TP2054



Voltage	kW	Rotation	REF
24	3,0	CW >>	111TP2055

See chapter Universal parts on page 735 for more parts.

USED ON DAUTEL



HYDRAULIC PUMPS

POMPES HYDRAULIQUES - HYDRAULIKPUMPEN



CC	Rotation	REF
1,2	CW >>	111TP2056
2,0	CW >>	111TP2057
2,5	CW >>	111TP2058

CC	Rotation	REF
1,7	<< CCW	111TP2060
2,1	<< CCW	111TP2059
2,6	<< CCW	111TP2061

See chapter Universal parts on page 699 for more parts.

SOLENOID SWITCHES/CONTACTORS

SOLÉNOÏDES/CONTACTEURS - MAGNETSCHALTER/SCHÜTZE

	Amperage	Info	REF	
			12 V	24 V
	80		111TP2062	111TP2063
	100		111TP2064	111TP2065
	150		111TP2066	
	100		111TP2067	111TP2068
	150	300 A [5 sec]	111TP2071	111TP2072

See chapter Universal parts on page 701 for more parts.

MOTORS, PUMPS & PARTS - MOTEURS, POMPES & ACCESSOIRES - MOTOREN, PUMPEN & ERSATZTEILE

USED ON DAUTEL



MOTORS, PUMPS & PARTS - MOTEURS, POMPES & ACCESSOIRES - MOTOREN, PUMPEN & ERSATZTEILE

COUPLERS

COUPLEURS - KUPPLUNGEN



Diameter mm	Height mm	REF
18	25	111TP8260

See chapter Universal parts on page 702 for more parts.

BRUSHES

BALAIS - KOHLEBÜRSTEN



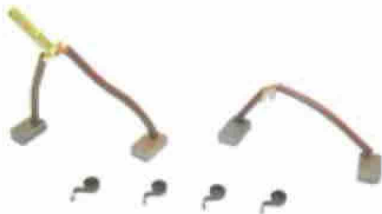
- Voltage: 24 V
- Dimensions: 15,8 x 8,9 x 15,8 mm

REF 111TP2073



Dimensions: 24,8 x 9,9 x 22,9 mm

REF 111TP1224



- Voltage: 24 V
- Dimensions: 12,5 x 7,3 x 19,2 mm

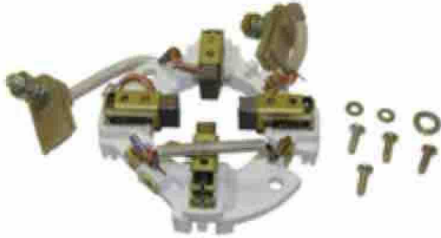
REF 111TP2074

USED ON DAUTEL



BRUSH ROCKERS

COLLIERS PORTE-BALAIS - KOHLENHALTER



Diameter: 105 mm

REF **111TP1225**

BEARINGS

ROULEMENTS - LAGER



Diameter mm	Height mm	REF
12/32	10	111TP1226
17/35	10	111TP1227
20/42	10	111TP1388



Diameter mm	Height mm	REF
12/32	10	111TP2075

See chapter Universal parts on page 735 for more parts.

BACK BEARING COVERS

COUVERCLES DE ROULEMENT ARRIÈRE - LAGERDECKEL HINTEN



Diameter: 125 mm

REF **111TP2076**

MOTORS, PUMPS & PARTS - MOTEURS, POMPES & ACCESSOIRES - MOTOREN, PUMPEN & ERSATZTEILE

USED ON DAUTEL



HOSES & FITTINGS - TUYAUX & RACCORDS - SCHLÄUCHE & KUPPLUNGEN

HOSES

TUYAUX - SCHLÄUCHE



Hose diameter		Length mm	Fitting 1 mm	Fitting 2 mm	Info	REF
Inch	mm					
1/4	6,4	500	M16 x 1,5	M16 x 1,5	-40-100 °C	111TP8262
1/4	6,4	650	M16 x 1,5	M16 x 1,5	-40-100 °C	111TP2077
1/4	6,4	800	M16 x 1,5	M16 x 1,5	-40-100 °C	111TP1664
1/4	6,4	650	M16 x 1,5	M16 x 1,5	-40-100 °C	111TP2078
1/4	6,4	750	M16 x 1,5	M16 x 1,5	-40-100 °C	111TP2079
1/4	6,4	820	M16 x 1,5	M16 x 1,5	-40-100 °C	111TP2080



Hose diameter		Length mm	Fitting 1 mm	Fitting 2 mm	Info	REF
Inch	mm					
1/4	6,4	350	M16 x 1,5	M16 x 1,5	-40-100 °C	111TP2081

FITTINGS

RACCORDS - KUPPLUNGEN



- Length: 30 mm
- Thread: 1/4" BSP - M16 x 1,5 mm


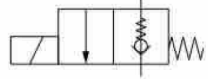

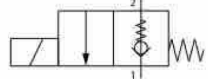
REF [111TP8263](#)

USED ON DAUTEL



SOLENOID VALVES

ÉLECTROVANNES - MAGNETVENTILE

	Type	Voltage	Diameter mm	Thread mm	REF
 	2/2	12	15	M20 x 1,5	111TP2082
 	2/2	24	15	M20 x 1,5	111TP2083

CARTRIDGES

CARTOUCHES - PATRONEN

	Type	Diameter mm	Thread	REF
 	2/2	12,7	3/4" UNF	111TP2084
 	2/2	15	M20 x 1,5 mm	111TP2085
 	4/2	15,8-17,4-18,9	7/8" UNF	111TP2086
 	2/2	15	M20 x 1,5 mm	111TP2087

COILS & VALVES - BOBINES & SOUPAPES - SPULEN & VENTILE

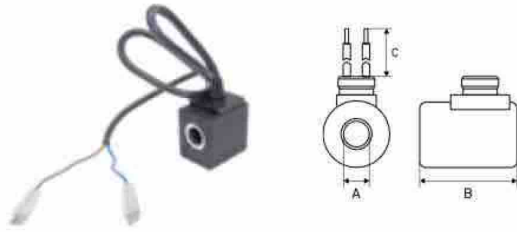
USED ON DAUTEL



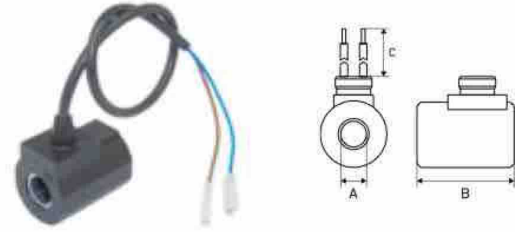
COILS & VALVES – BOBINES & SOUPAPES – SPULEN & VENTILE

COILS

BOBINES – SPULEN



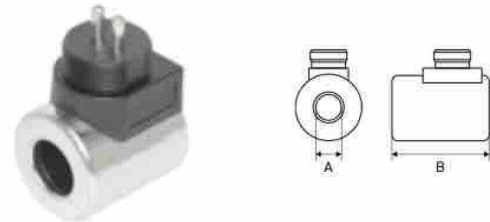
Voltage	Wattage	A mm	B mm	C mm	REF
12	18	13	39	600	111TP2088
12	18	13	39	3450	111TP2089



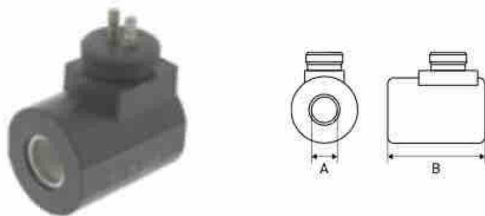
Voltage	Wattage	A mm	B mm	C mm	REF
24	26	16	50	400	111TP2090
24	26	16	50	600	111TP2091



Voltage	Wattage	A mm	B mm	C mm	REF
12	26	18	40	3000	111TP2092
24	26	18	40	3000	111TP2093



Voltage	Wattage	A mm	B mm	Thread mm	REF
12	18	18	40	M27 x 1	111TP2094
24	18	18	40	M27 x 1	111TP2095



Voltage	Wattage	A mm	B mm	Thread mm	REF
26	26	16	50	M27 x 1	111TP2096

VALVE BLOCKS

BOÎTIERS À SOUPAPES – STEUERBLÖCKE



- Length: 122 mm
- Height: 50 mm
- Width: 120 mm
- DLB45

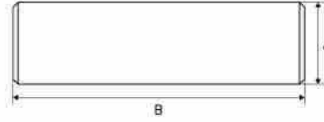
REF [111TP2097](#)

USED ON DAUTEL

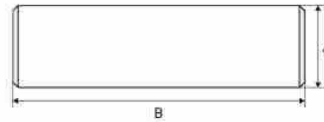


PINS

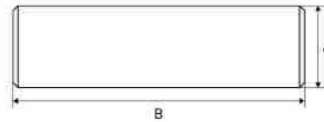
AXES - ACHSEN



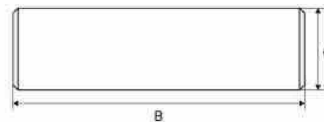
A mm	B mm	Thread	REF
30	93	1/8" BSP	111TP2098
30	110	1/8" BSP	111TP2099
30	125	1/8" BSP	111TP2100
35	140	1/8" BSP	111TP2101



A mm	B mm	Thread	REF
30	77	M10	111TP8264
30	93	M10	111TP2102
30	107	M10	111TP2103
30	125	M10	111TP2104



A mm	B mm	Thread mm	REF
30	270	M10 x 1,5	111TP2105



A mm	B mm	Thread	REF
35	187	M10	111TP8265

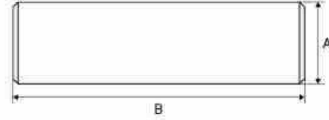
PINS, BUSHINGS & ROLLERS - AXES, BAGUES & GALETS - ACHSEN, BUCHSEN & ROLLEN

USED ON DAUTEL

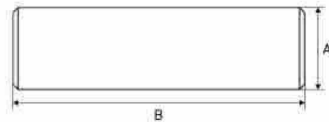


PINS, BUSHINGS & ROLLERS - AXES, BAGUES & GALETS - ACHSEN, BUCHSEN & ROLLEN

PINS AXES - ACHSEN



A mm	B mm	Thread	REF
35	178	M10	111TP2106



A mm	B mm	Thread mm	REF
35	82	M10 x 1	111TP2107
35	92	M10 x 1	111TP2108
35	102	M10 x 1	111TP2109
35	112	M10 x 1	111TP2110
35	160	M10 x 1	111TP2111



A mm	B mm	REF
35	82	111TP2112
35	92	111TP2113
35	102	111TP2114
35	112	111TP2115
35	160	111TP2116



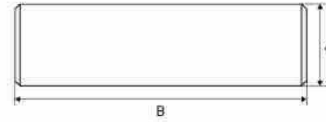
A mm	B mm	Thread	REF
35	175	M10 x 1	111TP2117
35	178	M10 x 1	111TP2118

USED ON DAUTEL

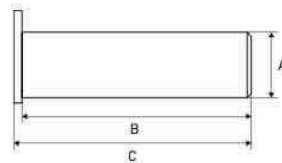


PINS

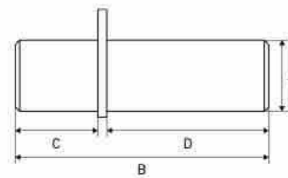
AXES - ACHSEN



A mm	B mm	Thread	REF
30	163	M10	111TP8267



A mm	B mm	C mm	Thread	REF
30	81	88	3/8" NF	111TP2119
30	86	93	3/8" NF	111TP2120
30	104	110	M10 x 1	111TP2121
30	140	146	M10 x 1	111TP8266
35	155	165	M8 x 1	111TP2122



A mm	B mm	C mm	D mm	REF
30	176	82	88	111TP2123
30	185	77	100	111TP8268

PIN HOLDERS

VERROUILLAGE D'AXE - BOLZENSICHERUNGEN



- Diameter: 10,5 mm
- Length: 34 mm
- Height: 15 mm
- Width: 25 mm

REF [111TP2142](#)

PINS, BUSHINGS & ROLLERS - AXES, BAGUES & GALETS - ACHSEN, BUCHSEN & ROLLEN

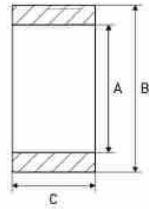
USED ON DAUTEL



PINS, BUSHINGS & ROLLERS – AXES, BAGUES & GALETS – ACHSEN, BUCHSEN & ROLLEN

PLATFORM ROLLERS

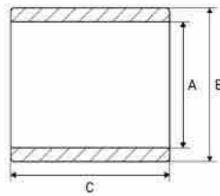
GALETS DE HAYON – PLATTFORMROLLEN



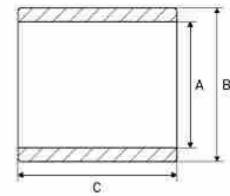
A mm	B mm	C mm	REF
22	100	45	111TP2124
30	90	57	111TP2125
30	120	57	111TP2126
36	90	57	111TP2127
36	120	57	111TP2128

BUSHINGS

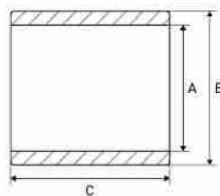
BAGUES – BUCHSEN



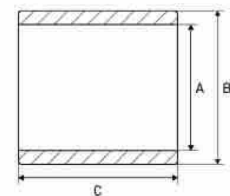
A mm	B mm	C mm	REF
30	36	30	111TP2129
30	36	40	111TP2130
35	41	30	111TP2131



A mm	B mm	C mm	REF
30	36	30	111TP2132
30	36	40	111TP2133



A mm	B mm	C mm	REF
30	36	30	111TP2134
30	36	40	111TP2135
35	41	25	111TP8270
35	41	25	111TP8270
35	41	30	111TP2136
35	41	32,5	111TP2137
35	41	35	111TP2138
35	41	40	111TP2139



A mm	B mm	C mm	REF
35	41	25	111TP8271
30	36	40	111TP8272

See chapter Universal parts on page 705 for more parts.

USED ON DAUTEL**EYE BOLTS**

BOULONS À CEIL - RINGSCHRAUBEN



Diameter mm	Length mm	REF
10	60	111TP2140
12	62	111TP2141

PINS, BUSHINGS & ROLLERS - AXES, BAGUES & GALETS - ACHSEN, BUCHSEN & ROLLEN

USED ON DAUTEL



MECHANICAL PARTS – PIÈCES MÉCANIQUES – MECHANISCHE ERSTATZTEILE

ROLL STOPS & PARTS

BUTÉES DE ROUES & ACCESSOIRES – ABROLLSICHERUNGEN & ERSATZTEILE



1

2

1. REF 111TP2145 – Left
2. REF 111TP2146 – Right

SPRINGS & GAS SPRINGS

RESSORTS & VÉRINS À GAZ – FEDERN & GASDRUCKFEDERN



Diameter mm	Length mm	REF
11/2	68	111TP2147



Diameter mm	Length mm	REF
2 x 30	585	111TP8274



1

2

Diameter mm	Length mm	Info	REF
11	1040	Left	111TP2149
11	1040	Right	111TP2150



Length mm	Info	REF
439	1800N – HZH	111TP2148



Length mm	Height mm	Width mm	REF
54	20,5	25	111TP2151

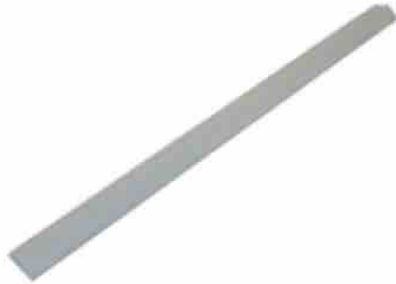
See chapter Universal parts on page 707 for more parts.

USED ON DAUTEL



SLIDER BLOCKS, ROLLERS & WEAR PLATES

BLOCS DE DÉFILEMENT, GALETS & PLAQUES D'USURE - GLEITBLÖCK, LAUFROLLEN & VERSCHLEISSPLATTEN



Length: 400 mm

REF 111TP8275

CAPS

BOUCHONS - DECKEL



Diameter: 114,3 mm

REF 111TP2152



Diameter: 92 mm

REF 111TP2153



1

2

Length: 210 mm

1. **REF 111TP8276** - Left
2. **REF 111TP8277** - Right

See chapter Universal parts on page 707 for more parts.

PLATFORM LOCKS

VERROUILLAGE DE PLATEFORME - PLATTFORMVERSCHLÜSSE



Thread: 2 x M5

REF 111TP2154

MECHANICAL PARTS - PIÈCES MÉCANIQUES - MECHANISCHE ERSTATZTEILE

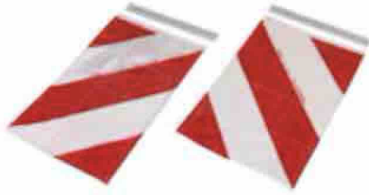
USED ON DAUTEL



MECHANICAL PARTS – PIÈCES MÉCANIQUES – MECHANISCHE ERSTATZTEILE

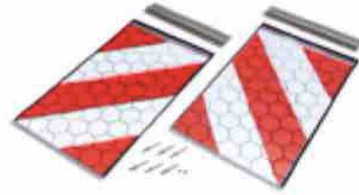
PLATFORM PARTS

PIÈCES DE PLATEFORME – PLATTFORMERSATZTEILE



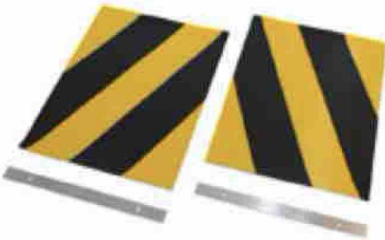
- Length: 400 mm
- Width: 250 mm
- § 53b Abs. 5 StVZO
- TÜV/CE with certificate

REF 111TP2155



- Length: 400 mm
- Width: 250 mm
- § 53b Abs. 5 StVZO
- TÜV/CE with certificate

REF 111TP1320



- Length: 340 mm
- Width: 250 mm

REF 111TP2156



- Length: 360 mm
- Width: 250 mm

REF 111TP8280



- Length: 270 mm
- Width: 65 mm

REF 111TP8281



- Length: 40 mm
- Width: 26 mm

REF 111TP8278



DLB45

REF 111TP8279

See chapter Universal parts on page 708 for more parts.

USED ON DAUTEL



TOGGLE SWITCHES

INTERRUPTEURS À LEVIER - KIPPSCHALTER



2 x NO

REF 111TP2202



2 x NO (I-O-I)

REF 111TP2203



1 x NO (I-O-I)

REF 111TP2204



1 x NO (I-O-I)

REF 111TP2205

BATTERY/EMERGENCY SWITCHES & PARTS

COUPE BATTERIE/INTERRUPTEURS D'ARRÊT D'URGENCE & ACCESSOIRES - BATTERIE-/NOTSTOPPSCHALTER & ERSATZTEILE



Used on REF 111TP2202 +
111TP2204 + 111TP2205

REF 111TP8295



Diameter: 21,6 mm

REF 111TP2170

SWITCHES & CONTROLLERS - INTERRUPTEURS & COMMANDES - SCHALTER & BEDIENUNGEN

USED ON DAUTEL



SWITCHES & CONTROLLERS – INTERRUPTEURS & COMMANDES – SCHALTER & BEDIENUNGEN

SENSORS & SWITCHES

CAPTEURS & INTERRUPTEURS – SENSOREN & SCHALTER



- Voltage: 10/36 V
- Length: 6000 mm
- Thread: M12 x 54 mm
- IP67

REF 111TP2172



- Length: 5000 mm
- Thread: M12 x 1 x 55 mm

REF 111TP2175



Length: 500 mm

REF 111TP8283



Length: 1000 mm

REF 111TP2174



Length: 1600 mm

REF 111TP2176



Length: 1690 mm

REF 111TP8284



Length: 3250 mm

REF 111TP2173

USED ON DAUTEL



CONTROL BOXES & PARTS

BOÎTIERS DE CONTRÔLE & ACCESSOIRES – BEDIENKÄSTEN & ERSATZTEILE



- Length: 340 mm
- Width: 125 mm

REF 111TP2171

CONTROLLERS

COMMANDES – BEDIENUNGEN



Operate your tail lift with our high-quality hand controls available in 2- or 3-button configurations.

Your benefits:

- Maximum comfort, high productivity
- Unique ergonomic design
- Easy push system
- With magnet and ring for easy handling
- Rubber shock absorber
- Usable in cold and wet environments

Specifications:

- Protection (IP): IP44 according to EN 60 529
- Contact type: Mafelec (push button)
- Max amperage: 10 A
- Operating temperature: -25 °C up to 60 °C
- Material: ABS plastic with rubber buffer
- Cable: polyurethane 3,5 metres working length

Applications:

Tail lifts, winches, cranes to name a few

Available colours:

Orange, yellow, green, red and blue

Available in different colours and in 2- or 3-button configurations. Ask for your quantity discount. All models are equipped with Mafelec switches.

2-button hand controls with cable and connector

Make	Colour	REF
Dautel 3-pin	Green	111TP5191
Dautel 7-pin	Green	111TP5192

3-button hand controls with cable and connector

Make	Colour	REF
Dautel	Green	111TP5203

2-button hand controls without cable

Colour	REF
Orange	111TP5214
Blue	111TP5215
Red	111TP5216
Yellow	111TP5217
Green	111TP5218

3-button hand controls without cable

Colour	REF
Orange	111TP5219
Blue	111TP5220
Yellow	111TP5221
Red	111TP5222
Green	111TP5223

SWITCHES & CONTROLLERS – INTERRUPTEURS & COMMANDES – SCHALTER & BEDIENUNGEN

USED ON DAUTEL



SWITCHES & CONTROLLERS – INTERRUPTEURS & COMMANDES – SCHALTER & BEDIENUNGEN

CONTROLLERS

COMMANDES – BEDIENUNGEN



- 2 x NO
- Mafelec switch

REF 111TP8092



- 1 x NO + 1 x NC
- Mafelec switch

REF 111TP8093

See chapter Universal parts on page 712 for more parts.

FOOT CONTROLLERS & PARTS

COMMANDES AU PIED & ACCESSOIRES – FUSSSCHALTER & ERSATZTEILE



- Length: 500 mm
- Lift

REF 111TP2159



- Length: 500 mm
- Lower

REF 111TP2160



- Length: 6000 mm
- Lift

REF 111TP2161



- Length: 6000 mm
- Lower

REF 111TP2162



- Length: 500 mm
- Neutral

REF 111TP2163



- Length: 500 mm
- Lift

REF 111TP2164

USED ON DAUTEL



FOOT CONTROLLERS & PARTS

COMMANDES AU PIED & ACCESSOIRES - FUSSSCHALTER & ERSATZTEILE



- Length: 500 mm
- Lower

REF 111TP2165



Length mm	Info	REF
750	Up	111TP2166
750	Lower	111TP2167
	Up - H (only housing)	111TP2177
	Down - S (only housing)	111TP2178



Diameter: 70 mm

REF 111TP2169

SWITCHES & CONTROLLERS - INTERRUPTEURS & COMMANDES - SCHALTER & BEDIENUNGEN

USED ON DAUTEL



CABLES & CONNECTORS - CÂBLES & CONNECTEURS - KABEL & STECKER

BATTERY CABLES

CÂBLES DE BATTERIE - BATTERIEKABEL



- Length: 10 m
- Wire size: 25 mm²

REF 111TP2181



- Length: 10 m
- Wire size: 50 mm²

REF 111TP2182

KOSTAL CABLES

CÂBLES KOSTAL - KOSTALKABEL

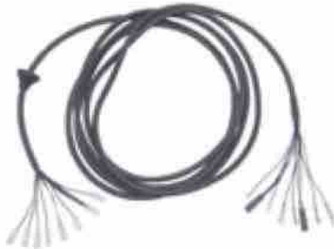


- Length: 4000 mm
- Thread: M24 x 1 mm/M27 x 1 mm

REF 111TP2183

CABLES & PARTS

CÂBLES DE BATTERIE - KABEL & ERSATZTEILE



Length: 5150 mm

REF 111TP2184



REF 111TP8168 - Voltage: 12 V

REF 111TP8557 - Voltage: 24 V



Length: 4120 mm

REF 111TP8286

See chapter Universal parts on page 717 for more parts.

USED ON DAUTEL



CONNECTORS & PARTS

CONNECTEURS & ACCESSOIRES - STECKER & ERSATZTEILE



3-pole

REF 111TP2185



3-pole

REF 111TP2186



Male

REF 111TP2187



Female

REF 111TP2188

See chapter Universal parts on page 719 for more parts.

CABLES & CONNECTORS - CÂBLES & CONNECTEURS - KABEL & STECKER

USED ON DAUTEL



ELECTRICAL PARTS - PIÈCES ÉLECTRIQUES - ELEKTRISCHE ERSATZTEILE

FLASHER LIGHTS & PARTS

LAMPES TORCHES & ACCESSOIRES - BLINKLEUCHTEN & ERSATZTEILE



LED

REF 111TP2189 - Voltage: 12 V
REF 111TP2190 - Voltage: 24 V



Used on REF 111TP2189 + 111TP2190

REF 111TP8287



LED

REF 111TP2191 - Voltage: 12 V
- Wattage: 4 W
REF 111TP2192 - Voltage: 24 V
- Wattage: 8 W

See chapter Universal parts on page 725 for more parts.

PRINTED CIRCUIT BOARDS/CONTROLLERS

CIRCUITS IMPRIMÉS/COMMANDES - LEITERPLATTEN/BEDIENUNGEN



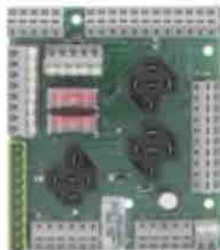
DLB47

REF 111TP2193



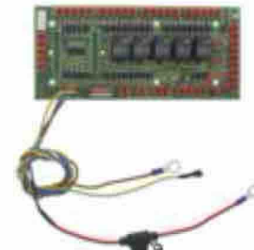
DLB45

REF 111TP2194



DLB36

REF 111TP8288



DS48

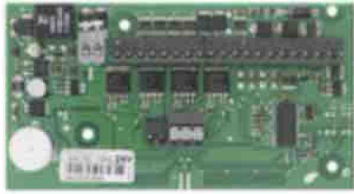
REF 111TP8289

USED ON DAUTEL



PRINTED CIRCUIT BOARDS/CONTROLLERS

CIRCUITS IMPRIMÉS/COMMANDES - LEITERPLATTEN/BEDIENUNGEN



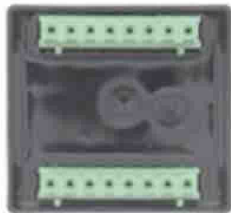
DLB45

REF **111TP8292**



DS48

REF **111TP8290**

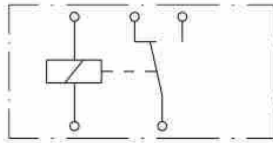


DLB50

REF **111TP8291**

RELAYS

RELAIS - RELAIS



Voltage	Wattage	Info	REF
12	20/30	NO/NC	111TP8294
24	20/30	NO/NC	111TP1917

See chapter Universal parts on page 727 for more parts.

ELECTRICAL PARTS - PIÈCES ÉLECTRIQUES - ELEKTRISCHE ERSATZTEILE

USED ON DAUTEL



ELECTRICAL PARTS – PIÈCES ÉLECTRIQUES – ELEKTRISCHE ERSATZTEILE

FUSES

FUSIBLES – SICHERUNGEN



DIN 72581/5

Amperage	REF
125	111TP2195
150	111TP1925
200	111TP1926
250	111TP1927



DIN 43560/1

Amperage	REF
100	111TP2196
135	111TP2197
200	111TP2198



Amperage	Remark	REF
150/200	Universal	111TP2199

See chapter Universal parts on page 728 for more parts.

FUSE HOLDERS & PARTS

PORTE-FUSIBLES & ACCESSOIRES – SICHERUNGSHALTER & ERSATZTEILE



Thread: M8

[REF 111TP2200](#)



Thread: M8

[REF 111TP2201](#)

See chapter Universal parts on page 732 for more parts.

BATTERY COVERS/HOUSINGS

COUVERCLES/LOGEMENTS BATTERIE – BATTERIEKÄSTEN/-DECKEL



- Length: 713 mm
- Width: 550 mm

[REF 111TP2206](#)