



USED ON
ERHEL HYDRIS

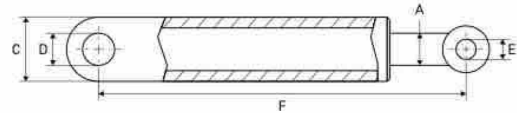
USED ON ERHEL HYDRIS



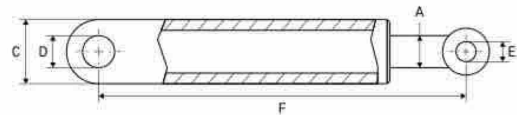
CYLINDERS – VÉRINS/CYLINDRES – ZYLINDER

LIFT CYLINDERS

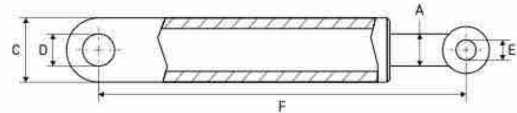
VÉRINS DE LEVAGE – HUBZYLINDER



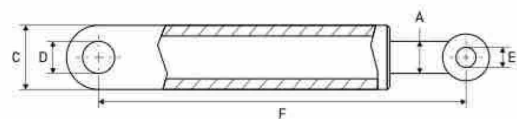
A mm	B mm	C mm	D mm	E mm	F mm	Info	REF	
							Cylinder	Seal kit
60	80	80	25	25	385	Light NI/NE	111TP3181	111TP3186



A mm	B mm	C mm	D mm	E mm	F mm	Info	REF	
							Cylinder	Seal kit
35	60	70	30	30	525	2000K Gamme IV	111TP3182	112TP9857



A mm	B mm	C mm	D mm	E mm	F mm	Info	REF	
							Cylinder	Seal kit
45	90	100	30	30	535	City 1500	111TP9267	112TP9858



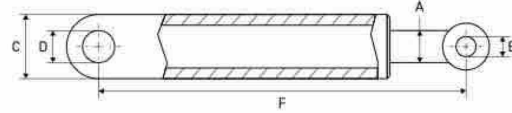
A mm	B mm	C mm	D mm	E mm	F mm	Info	REF	
							Cylinder	Seal kit
55	55	60/70	25	20	510	ZOOM P 1506	111TP9270	112TP9859

USED ON ERHEL HYDRIS

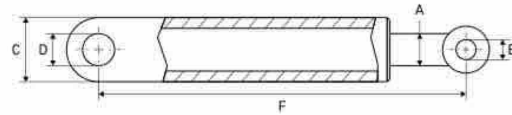


LIFT CYLINDERS

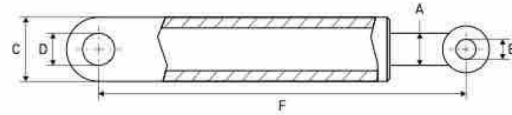
VÉRINS DE LEVAGE - HUBZYLINDER



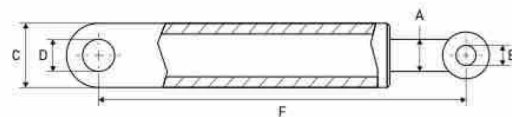
A mm	B mm	C mm	D mm	E mm	F mm	Info	REF	
							Cylinder	Seal kit
40	70	80	30	30	625	ZOOM SR 2504.90 Gamme IV	111TP9271	112TP9860



A mm	B mm	C mm	D mm	E mm	F mm	Info	REF	
							Cylinder	Seal kit
45	90	10	35	35	505	Classic 1502 2G	111TP9272	112TP9858



A mm	B mm	C mm	D mm	E mm	F mm	Info	REF	
							Cylinder	Seal kit
45	80	90	35	35	505	Classic 2000 ZOOM 2000	111TP9273	112TP9861



A mm	B mm	C mm	D mm	E mm	F mm	Info	REF	
							Cylinder	Seal kit
35	60	70	35	35	505	ZOOM P 1505	111TP9274	112TP9857

CYLINDERS - VÉRINS/CYLINDRES - ZYLINDER

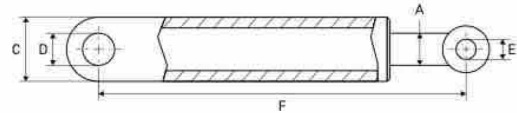
USED ON ERHEL HYDRIS



CYLINDERS – VÉRINS/CYLINDRES – ZYLINDER

LIFT CYLINDERS

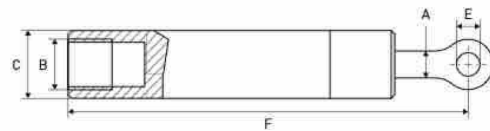
VÉRINS DE LEVAGE – HUBZYLINDER



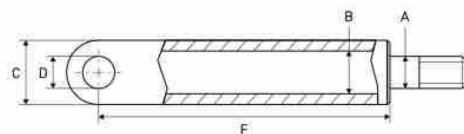
A mm	B mm	C mm	D mm	E mm	F mm	Info	REF	
							Cylinder	Seal kit
45	90	100	35	35	655	RL 1501	111TP9266	112TP9858

TILT CYLINDERS

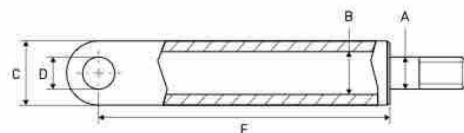
VÉRIN D'INCLINAISON – SCHLISSZYLINDER



A mm	B mm	C mm	D mm	E mm	F mm	Info	REF	
							Cylinder	Seal kit
30	60	70	M30	25	219	Light NI/NE 1G	111TP3183	111TP3185



A mm	B mm	C mm	D mm	E mm	F mm	Info	REF	
							Cylinder	Seal kit
45	80	90	30	M38	235	Classic 2504.90 Classic 3004.70	111TP3184	112TP9862



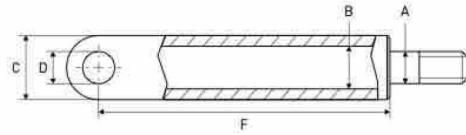
A mm	B mm	C mm	D mm	F mm	Info	REF	
						Cylinder	Seal kit
35	60	70	30	230	Classic 1504.65	111TP9260	112TP9857

USED ON ERHEL HYDRIS

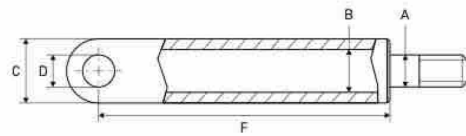


TILT CYLINDERS

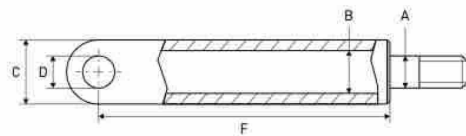
VÉRIN D'INCLINAISON - SCHLISSZYLINDER



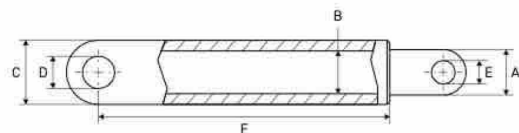
A mm	B mm	C mm	D mm	F mm	Info	REF	
						Cylinder	Seal kit
60	70	80	30	60	ZOOM P ZOOM SR 1504.65	111TP9262	111TP3186



A mm	B mm	C mm	D mm	F mm	Info	REF	
						Cylinder	Seal kit
45	70	80	30	285	CLASSIC 1504.90 2004.70	111TP9263	111TP9313



A mm	B mm	C mm	E mm	F mm	Info	REF	
						Cylinder	Seal kit
45	80	90	30	70	ZOOM SR 2004.70	111TP9265	111TP9316



A mm	B mm	C mm	D mm	E mm	F mm	Info	REF	
							Cylinder	Seal kit
50	90	100	35	35	725	Classic 1502	111TP9266	112TP9858

CYLINDERS - VÉRINS/CYLINDRES - ZYLINDER

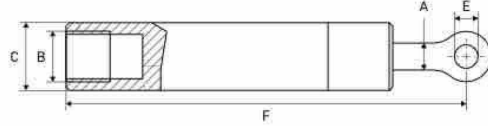
USED ON ERHEL HYDRIS



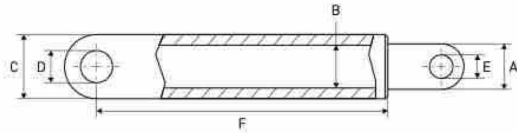
CYLINDERS – VÉRINS/CYLINDRES – ZYLINDER

TILT CYLINDERS

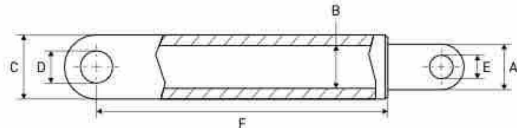
VÉRIN D'INCLINAISON – SCHLISSZYLINDER



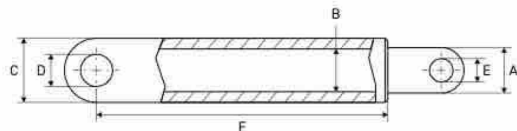
A mm	B mm	C mm	E mm	F mm	Info	REF	
						Cylinder	Seal kit
30	60	70	25	270	Classic 1506 2G	111TP9268	112TP9863



A mm	B mm	C mm	D mm	E mm	F mm	Info	REF	
							Cylinder	Seal kit
45	90	100	35	35	845	Retract EH 2G	111TP9275	112TP9858



A mm	C mm	E mm	F mm	Info	REF	
					Cylinder	Seal kit
40	70	20	225	RL 501/751 2G	111TP9276	112TP9864



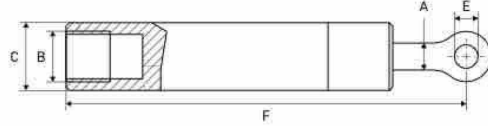
A mm	B mm	C mm	D mm	E mm	F mm	Info	REF	
							Cylinder	Seal kit
45	80	90	35	35	406	Classic 2000 2G	111TP9277	112TP9861

USED ON ERHEL HYDRIS

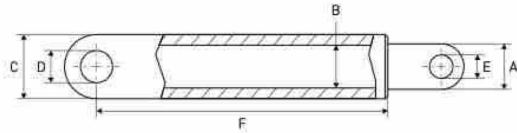


TILT CYLINDERS

VÉRIN D'INCLINAISON - SCHLISSZYLINDER



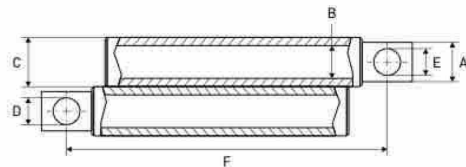
A mm	B mm	C mm	E mm	F mm	Info	REF	
						Cylinder	Seal kit
30	60	70	25	219	Light NI/NE 1G	111TP9279	111TP3185



A mm	B mm	C mm	D mm	E mm	F mm	Info	REF	
							Cylinder	Seal kit
45	90	100	35	35	845	Retract RL 1G	111TP9281	112TP9858

RETRACTION CYLINDERS

VÉRINS DE RÉTRACTION - ZEICHZYLINDER



A mm	B mm	C mm	D mm	E mm	F mm	Info	REF	
							Cylinder	Seal kit
30	50	60	16	16	600	Retract EH	111TP9278	112TP9865

CYLINDERS - VÉRINS/CYLINDRES - ZYLINDER

USED ON ERHEL HYDRIS



CYLINDER PARTS - PIÈCES DE CYLINDRE - ZYLINDER-ERSATZTEILE

SEAL KITS

KITS DE JOINTS - DICHTUNGSSÄTZE



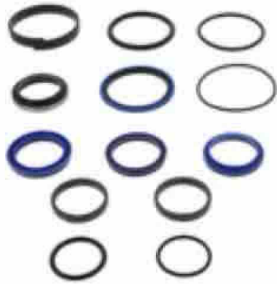
Diameter: 30/40 mm

REF 111TP3185



Diameter: 30/60 mm

REF 111TP9314



Diameter: 35/60 mm

REF 111TP9307



Diameter: 40/40 mm

REF 111TP9306



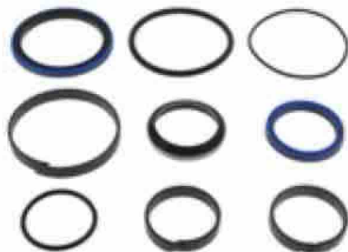
Diameter: 45/55 mm

REF 111TP9315



Diameter: 45/70 mm

REF 111TP9313



Diameter: 45/80 mm

REF 111TP9311



Diameter: 45/80 mm

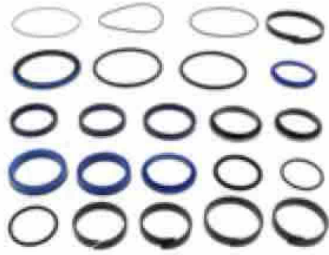
REF 111TP9316

USED ON ERHEL HYDRIS



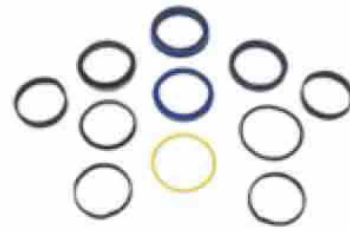
SEAL KITS

KITS DE JOINTS – DICHTUNGSSÄTZE



Diameter: 45/90 mm

REF 111TP9309



Diameter: 50/50 mm

REF 111TP9308

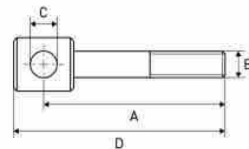


Diameter: 60/70 mm

REF 111TP3186

EXTENSIONS

RALLONGES – VERLÄNGERUNG



A mm	B mm	C mm	D mm	REF
195	M42	30	220	111TP9238
260	M30 x 200	30	285	111TP9293
295	M38	30	320	111TP3188
370	M30 x 200	30	395	111TP9255



A mm	B mm	C mm	D mm	REF
195	M30 x 200	25	215	111TP9337

CYLINDER PARTS – PIÈCES DE CYLINDRE – ZYLINDER-ERSATZTEILE

USED ON ERHEL HYDRIS



CYLINDER PARTS - PIÈCES DE CYLINDRE - ZYLINDER-ERSATZTEILE

BRACKETS

SUPPORTS - BÜGEL



Dimensions: 40 x 40 x 155 mm

REF 111TP9331



For type Gamme IV

REF 111TP9334



- Thickness: 5 mm
- Dimensions: 160 x 100 x 40 mm

REF 111TP9338

USED ON ERHEL HYDRIS



DC HYDRAULIC POWER UNITS

GROUPE HYDRAULIQUE DC - DC HYDRAULIKAGGREGAT



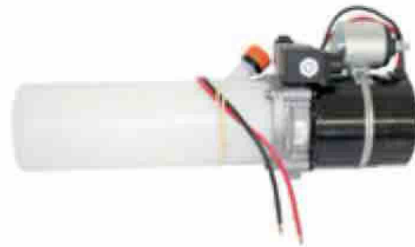
Voltage	kW	CC	Info l	REF
24	1,5	2,0	6 - 4/2 vert	111TP9194



Voltage	kW	CC	Info l	REF
24	2,2	3,0	6 - 4/2 vert	111TP9196



Voltage	kW	CC	REF
24	1,2	0,75	112TP9866



Voltage	kW	CC	REF
24	1,2	0,75	111TP9186



Voltage	kW	CC	Info l	REF
12	1,5	2,0	10	111TP9198



CC	Length mm	Thread	Info	REF
3,0	360	9/16 UNF	Vertical	111TP9193
2,0	370	M10 x 1,5 mm	Vertical	111TP9192

See chapter Universal parts on page 697 for more parts.

POWER PACKS & PARTS - GROUPE HYDRAULIQUE & ACCESSOIRES - AGGREGATE & ERSATZTEILE

USED ON ERHEL HYDRIS



POWER PACKS & PARTS - GROUPE HYDRAULIQUE & ACCESSOIRES - AGGREGATE & ERSATZTEILE

COVERS

COUVERCLES - ABDECKUNGEN



Length mm	Height mm	Width mm	REF
290	255	265	111TP3190



Length mm	Height mm	Width mm	REF
395	330	175	111TP9068



Length mm	Height mm	Width mm	REF
485	200	200	111TP9069



Length mm	Height mm	Width mm	REF
438	140	25	111TP9070



Length mm	Height mm	Width mm	REF
445	335	155	111TP9071



Length mm	Height mm	Width mm	REF
532	244	234	111TP9072



Length mm	Height mm	Width mm	REF
405	200	200	111TP9075



Length mm	REF
320	111TP9076



Length mm	Height mm	Width mm	REF
285	245	272	111TP9077



Length mm	Height mm	Width mm	REF
470	200	200	111TP9078

USED ON ERHEL HYDRIS



CASES

BOÎTIERS - GEHÄUSE



Length mm	Width mm	REF
275	225	111TP9189

POWER PACKS & PARTS - GROUPE HYDRAULIQUE & ACCESSOIRES - AGGREGATE & ERSATZTEILE

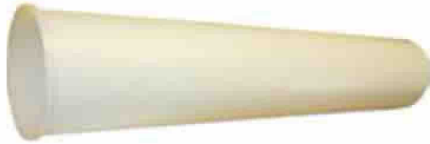
USED ON ERHEL HYDRIS



POWER PACKS & PARTS - GROUPE HYDRAULIQUE & ACCESSOIRES - AGGREGATE & ERSATZTEILE

TANKS & OIL RESERVOIRS

RÉSERVOIRS (D'HUILE) - TANKS & ÖLBEHÄLTER



Length mm	Diameter mm	Volume l	REF
625	125	6	111TP9185



Length mm	Diameter mm	Volume l	REF
300	80	3	111TP9188



Length mm	Diameter mm	Volume l	REF
280	90	1,7	111TP9190



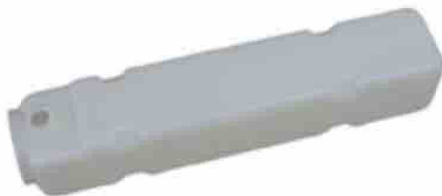
Length mm	Diameter mm	Volume l	REF
660	125	10	111TP9195



Length mm	Diameter mm	Volume l	REF
280	125	3	111TP9199



Length mm	Diameter mm	Volume l	REF
195	125	2	111TP9201



Length mm	Diameter mm	Volume l	REF
660	110	10	111TP9202



Length mm	Diameter mm	Volume l	REF
165	95	1,8	112TP9867

USED ON ERHEL HYDRIS



FILTERS & BREATHERS

FILTRES & RENIFLARDS - FILTER & ENTLÜFTER



- Diameter: 80 mm
- Thread: 3/8"
- Thickness: 35 mm

REF 111TP9361



104 μ

REF 111TP9128



Thread: 3/4"

REF 111TP3454



Thread: 3/8"

REF 111TP9324



Thread: 1/2"

REF 111TP9325

POWER PACKS & PARTS - GROUPE HYDRAULIQUE & ACCESSOIRES - AGGREGATE & ERSATZTEILE

USED ON ERHEL HYDRIS



POWER PACKS & PARTS - GROUPE HYDRAULIQUE & ACCESSOIRES - AGGREGATE & ERSATZTEILE

LOCKS

SERRURES - VERRIEGELUNGEN



RH

REF 111TP9215



RH

REF 111TP9219



Lock kit universal

REF 111TP9220



REF 111TP9294



Rubber lock

REF 111TP9297



REF 111TP9296

USED ON ERHEL HYDRIS



GASKETS

JOINTS - DICHTUNGEN



- Thickness: 10 mm
- Dimensions: 150 x 150 mm

REF 111TP9161



Joint JE

REF 111TP9162



- Diameter: 90 mm
- Ø 3 tor.

REF 111TP9163

POWER PACKS & PARTS - GROUPE HYDRAULIQUE & ACCESSOIRES - AGGREGATE & ERSATZTEILE

USED ON ERHEL HYDRIS



MOTORS, PUMPS & PARTS - MOTEURS, POMPES & ACCESSOIRES - MOTOREN, PUMPEN & ERSATZTEILE

ELECTRIC MOTORS

MOTEURS ÉLECTRIQUES - ELEKTROMOTOREN



Voltage	kW	Rotation	REF
24	2,0	CW >>	111TP3191
24	2,2	CW >>	111TP3192



Voltage	kW	Rotation	REF
12	2,1	<< CCW	111TP3195
24	2,1	<< CCW	111TP3194



Voltage	kW	Rotation	REF
12	1,6	CW >>	111TP3199
24	2,2	CW >>	111TP3200



Voltage	kW	Rotation	REF
12	2,0	CW >>	111TP3201
24	3,0	CW >>	111TP3202



Voltage	kW	Rotation	REF
12	0,9	<< CCW	112TP5783
24	1,2	<< CCW	111TP3198



Voltage	kW	Rotation	Info	REF
24	1,2	<< CCW	Improved version of REF 111TP3198	111TP9081



Voltage	kW	Rotation	REF
12	0,9	<< CCW	111TP3193
24	1,0	<< CCW	111TP9095



Voltage	kW	Rotation	REF
12	0,8	<< CCW	111TP9087



Voltage	kW	Rotation	REF
24	2,2	CW >>	111TP9089



Voltage	kW	Rotation	REF
24	2,0	<< CCW	111TP9092

USED ON ERHEL HYDRIS



ELECTRIC MOTORS

MOTEURS ÉLECTRIQUES - ELEKTROMOTOREN



Voltage	kW	Rotation	REF
24	3,0	CW >>	111TP9101



Voltage	kW	Rotation	REF
12	1,6	CW >>	111TP9085



Voltage	kW	Rotation	REF
24	2,2	<< CCW	111TP9088



Voltage	kW	Rotation	REF
24	1,0	<< CCW	111TP9091



Voltage	kW	Rotation	REF
24	2,2	CW >>	111TP9094



Voltage	kW	Rotation	REF
24	1,2	<< CCW	111TP9099



Voltage	kW	Rotation	REF
24	3,0	<< CCW	111TP9103



Voltage	kW	Rotation	REF
12	1,1	<< CCW	111TP9097

See chapter Universal parts on page 735 for more parts.

MOTORS, PUMPS & PARTS - MOTEURS, POMPES & ACCESSOIRES - MOTOREN, PUMPEN & ERSATZTEILE

USED ON ERHEL HYDRIS



MOTORS, PUMPS & PARTS – MOTEURS, POMPES & ACCESSOIRES – MOTOREN, PUMPEN & ERSATZTEILE

HYDRAULIC PUMPS

POMPES HYDRAULIQUES – HYDRAULIKPUMPEN



CC	Rotation	REF
1,7	<< CCW	111TP3203



CC	Rotation	REF
2,5	<< CCW	111TP3204



CC	Rotation	REF
0,75	<< CCW	111TP3207



CC	Rotation	REF
2,0	<< CCW	111TP9208



CC	Rotation	REF
2,7	<< CCW	111TP9209



CC	Rotation	REF
2,0	CW >>	111TP9211

See chapter Universal parts on page 699 for more parts.

HYDRAULIC MOTORS

MOTEUR HYDRAULIQUES – HYDRAULIKMOTOR



For gamma IV retractable lift

REF 111TP9203

USED ON ERHEL HYDRIS



SOLENOID SWITCHES/CONTACTORS				
SOLÉNOÏDES/CONTACTEURS - MAGNETSCHALTER/SCHÜTZE				
	Amperage	Info	REF	
			12 V	24 V
	80		111TP9067	
	80		111TP9289	111TP9290
	80		111TP9065	111TP8335
	100			111TP9425
	150	350 A (5 sec)	111TP3209	111TP3210
	150		111TP9304	

See chapter Universal parts on page 701 for more parts.

MOTORS, PUMPS & PARTS - MOTEURS, POMPES & ACCESSOIRES - MOTOREN, PUMPEN & ERSATZTEILE

USED ON ERHEL HYDRIS



MOTORS, PUMPS & PARTS – MOTEURS, POMPES & ACCESSOIRES – MOTOREN, PUMPEN & ERSATZTEILE

COUPLERS

COUPLEURS – KUPPLUNGEN



Diameter mm	Height mm	Info	REF
20	35	M/F	111TP9247



Diameter mm	Height mm	Info	REF
18	21	M/F	111TP9248



Diameter mm	Height mm	Info	REF
19/25	20	F/F	111TP9249



Diameter mm	Height mm	Info	REF
18	48	F/F	111TP9250



Diameter mm	Height mm	Info	REF
18	32	F/F	111TP9251



Diameter mm	Height mm	REF
14	11,5	112TP6249

See chapter Universal parts on page 702 for more parts.

USED ON ERHEL HYDRIS



BRUSHES

BALAIS - KOHLEBÜRSTEN



Dimensions: 16 x 9 x 18 mm

REF 111TP9231



Dimensions: 20 x 9 x 22 mm

REF 111TP9232



Dimensions: 13 x 9 x 25 mm

REF 111TP9233



Dimensions: 12 x 7 x 21 mm

REF 111TP9234



Dimensions: 13 x 9 x 25 mm

REF 111TP9235

MOTORS, PUMPS & PARTS - MOTEURS, POMPES & ACCESSOIRES - MOTOREN, PUMPEN & ERSATZTEILE

USED ON ERHEL HYDRIS



HOSES & FITTINGS - TUYAUX & RACCORDS - SCHLÄUCHE & KUPPLUNGEN

HOSES

TUYAUX - SCHLÄUCHE



Length mm	Info	REF
800	HP - 1/4 ETM10 + BJ14	111TP9168
1830	HP - 1/4 ETM10 + 1BJ12	111TP9178



Length mm	Info	REF
465	HP - 1/4 ETM10 + ETM10 90°	111TP9172
600	HP - 1/4 ETM10 + ETM10 90°	111TP9181
800	HP - 1/4 ETM10 + ETM10 90°	111TP9180
900	HP - 1/4 ETM10 + ETM10 90°	111TP9169
1000	HP - 1/4 ETM10 + ETM10 90°	111TP9184
1250	HP - 1/4 ETM10 + ETM10 90°	111TP9179



Length mm	Info	REF
950	HP - 1/4 2ETM10 90°	111TP9170

USED ON ERHEL HYDRIS



HOSES

TUYAUX - SCHLÄUCHE



Length mm	Info	REF
600	HP - 1/4 ETM10 + BJ14	111TP9182
1250	HP - 1/4 ETM10 90° + BJ1/4	111TP9171
1600	HP - 1/4 BJ14 + ETM10 90°	111TP9183



Length mm	Info	REF
1650	HP - 1/4 2ETM10	111TP9175



Length mm	Info	REF
900	HP - 1/4 BJ14	111TP9177

HOSES & FITTINGS - TUYAUX & RACCORDS - SCHLÄUCHE & KUPPLUNGEN

USED ON ERHEL HYDRIS



HOSES & FITTINGS - TUYAUX & RACCORDS - SCHLÄUCHE & KUPPLUNGEN

FITTINGS

RACCORDS - KUPPLUNGEN

HYDEM



- Diameter: 1,25 mm
- Length: 46 mm
- Thread: 3/8"

REF 111TP9134



Thread: M14 x 150 mm

REF 111TP9140

HYDEM



- Diameter: 3 mm
- Length: 46 mm
- Thread: 3/8"

REF 111TP9142

HYDEM



- Diameter: 3,3 mm
- Length: 46 mm
- Thread: 3/8"

REF 111TP9144

HYDEM



- Diameter: 2,25 mm
- Length: 46 mm
- Thread: 3/8"

REF 111TP9145

HYDEM



- Diameter: 1,75 mm
- Length: 46
- Thread: 3/8"

REF 111TP9146



Thread: M14 x 150 mm

REF 111TP9135



- Thread: M16 x 150 mm
- T10

REF 111TP9129

USED ON ERHEL HYDRIS



FITTINGS

RACCORDS - KUPPLUNGEN



- Thread: M14 x 150 mm
- 10 l DIN conical male

REF 111TP9130



- Thread: 1/4"
- 10 l cylindrical gas

REF 111TP9131



- Thread: M16 x 150 mm
- 10 l

REF 111TP9133



- Thread: M14 x 150 mm + M16 x 150 mm
- 8 l x 10 l

REF 111TP9136



- Thread: M16 x 150 mm
- 10 l

REF 111TP9137



- Thread: M16 x 150 mm + 1/4"
- 10 l + male gas conical

REF 111TP9138



- Thread: M16 x 150 mm
- T 10 l

REF 111TP9139



- M16 x 150 mm
- T 10 l

REF 111TP9143

HOSES & FITTINGS - TUYAUX & RACCORDS - SCHLÄUCHE & KUPPLUNGEN

USED ON ERHEL HYDRIS



COILS & VALVES – BOBINES & SOUPAPES – SPULEN & VENTILE

SOLENOID VALVES ÉLECTROVANNES – MAGNETVENTILE				
	Type	Voltage	Diameter mm	REF
	4/2	12	12,5	111TP3223
 	4/2	24	15,8	111TP3224
	2/2	24	15	111TP9113
	4/2	12	18	111TP9126
	4/2	24	18	111TP9124

USED ON ERHEL HYDRIS



SOLENOID VALVES ÉLECTROVANNES – MAGNETVENTILE				
	Type	Voltage	Diameter mm	REF
	2/2	24	14	112TP3088
 	2/2	12	18	111TP1235
 	2/2	24	18	111TP1236
	2/2	12	18	112TP2141

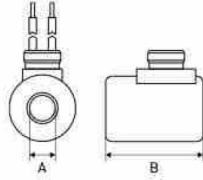
COILS & VALVES – BOBINES & SOUPAPES – SPULEN & VENTILE

USED ON ERHEL HYDRIS

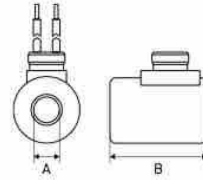


COILS & VALVES - BOBINES & SOUPAPES - SPULEN & VENTILE

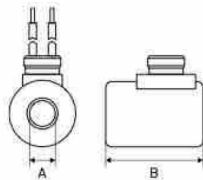
COILS BOBINES - SPULEN



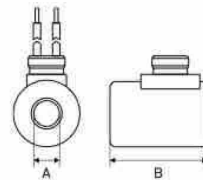
Voltage	A mm	B mm	REF
24	16	50	111TP9104



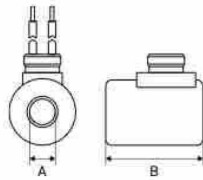
Voltage	A mm	B mm	REF
12	16	50	111TP9106



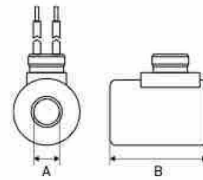
Voltage	A mm	B mm	REF
24	18	40	111TP9108



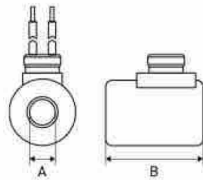
Voltage	A mm	B mm	REF
12	13	42	111TP9426



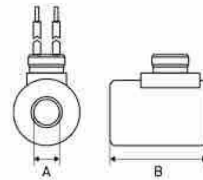
Voltage	A mm	B mm	REF
12	13	38	111TP9116



Voltage	A mm	B mm	REF
24	60	70	111TP2647



Voltage	A mm	B mm	REF
24	13	38	111TP9121



Voltage	A mm	B mm	REF
24	16,2	51	111TP9123

USED ON ERHEL HYDRIS



VALVE BLOCKS

BOÎTIERS À SOUPAPES – STEUERBLÖCKE



- Voltage: 24 V
- Thread: M20 x 150 mm
- Hole: 16

REF 111TP9109



- Voltage: 12 V
- Thread: M18 x 150 mm
- Hole: 13

REF 111TP9111



- Voltage: 24 V
- Thread: M18 x 150 mm
- Hole: 13

REF 111TP3225



- Voltage: 24 V
- Thread: M18 x 150 mm
- Hole: 13

REF 111TP3226



- Voltage: 12 V
- Thread: M20 x 150 mm
- Hole: 16

REF 111TP3227



- Voltage: 24 V
- Thread: M20 x 150 mm
- Hole: 16
- Kostal M27

REF 111TP9122



- Thread: M18 x 150 mm
- Dimensions: 60 x 47 x 30 mm

REF 111TP3228



- Thread: M20 x 150 mm
- Dimensions: 60 x 47 x 30 mm

REF 111TP9117

COILS & VALVES – BOBINES & SOUPAPES – SPULEN & VENTILE

USED ON ERHEL HYDRIS



COILS & VALVES - BOBINES & SOUPAPES - SPULEN & VENTILE

VALVE BLOCKS

BOÎTIERS À SOUPAPES - STEUERBLÖCKE



HYDEM

- Thread: M18 x 150 mm + 2 x 14/150 mm
- Dimensions: 50 x 50 x 30 mm

REF 111TP9120



- Voltage: 24 V
- Thread: 4/2" - 7/8"
- 2 wire

REF 111TP9346



- Rotation: CW >>
- CC: 1,1
- City 1001.60, City 1500.60

REF 111TP9204



- Rotation: CW >>
- CC: 1,1
- Hydraulic tank: 1,7 l

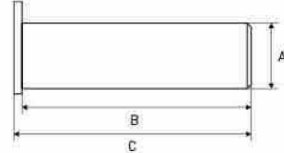
REF 111TP9205

USED ON ERHEL HYDRIS

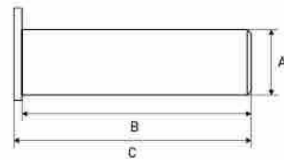


PINS

AXES - ACHSEN



A mm	B mm	REF
25	91	111TP3232
30	45	111TP9040



A mm	B mm	REF
20	60	111TP3229
25	90	111TP9028
25	103	111TP3230
25	110	111TP3231
30	81	111TP9026
30	95	111TP9166
30	102	111TP9021
30	170	111TP9043
30	145	111TP9041
35	72	111TP9031
35	113	111TP9030

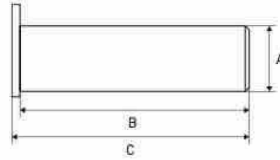
PINS, BUSHINGS & ROLLERS - AXES, BAGUES & GALETS - ACHSEN, BUCHSEN & ROLLEN

USED ON ERHEL HYDRIS

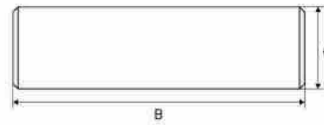


PINS, BUSHINGS & ROLLERS - AXES, BAGUES & GALETS - ACHSEN, BUCHSEN & ROLLEN

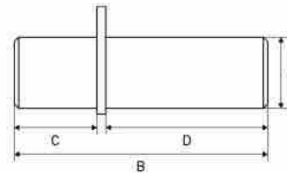
PINS AXES - ACHSEN



A mm	B mm	REF
30	105	111TP3234
30	255	111TP3233
35	98	111TP3235
35	107	111TP3236
35	122	111TP3237
35	148	111TP3238
35	158	111TP3239



A mm	B mm	REF
20/30	335	111TP3240
25	200	111TP9018
25	350	111TP9019



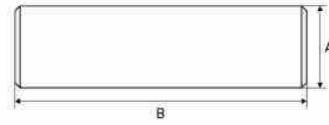
A mm	B mm	C mm	D mm	REF
20/25	116	45	67	111TP3241
20/25	130	45	80	111TP3242
28/30	160	46	105	111TP9038

USED ON ERHEL HYDRIS

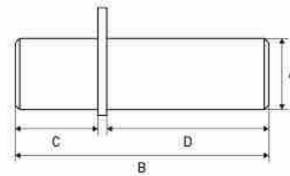


PINS

AXES - ACHSEN



A mm	B mm	REF
30	119	111TP9024



A mm	B mm	C mm	D mm	REF
35	201	66	135	111TP9017

PIN SETS

KITS D'AXES - ACHSENSETS



Light 750/500 NI NE

REF **112TP9868**



94 = Classic 1504.65

REF **112TP9869**



98 = Classic 1504.90

REF **112TP9870**



City (n° 122/123)

REF **111TP9020**

PINS, BUSHINGS & ROLLERS - AXES, BAGUES & GALETS - ACHSEN, BUCHSEN & ROLLEN

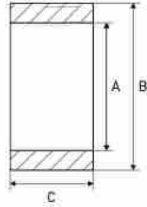
USED ON ERHEL HYDRIS



PINS, BUSHINGS & ROLLERS – AXES, BAGUES & GALETS – ACHSEN, BUCHSEN & ROLLEN

PLATFORM ROLLERS

GALETS DE TRANSPALETTE – PLATTFORMROLLEN



A mm	B mm	C mm	REF
20,5	70	35/40	111TP3243
28	85	35/44	111TP9362
35	110	50	111TP9349

BUSHINGS

BAGUES – BUCHSEN



A mm	B mm	C mm	REF
20	23	20	111TP3244
20	23	25	111TP3245
25	28	20	111TP3246
25	28	30	111TP3247
30	34	20	111TP3248
30	34	25	111TP3249
30	34	30	111TP3250
30	34	40	111TP3251
35	39	30	111TP3252
35	39	50	111TP3253
40	44	30	111TP3254



A mm	B mm	C mm	REF
72	60	40	111TP9046

See chapter Universal parts on page 705 for more parts.

USED ON ERHEL HYDRIS



BUSHING SETS

KITS DE BAGUES - BUCHSENSETS



Light 500/750 NE/NI

REF 112TP9872



94 = Classic 1504.65

REF 112TP9873



G4 (Range "IV")

REF 112TP9874



City 1985<->2005

REF 111TP9045

PINS, BUSHINGS & ROLLERS - AXES, BAGUES & GALETS - ACHSEN, BUCHSEN & ROLLEN

USED ON ERHEL HYDRIS



MECHANICAL PARTS – PIÈCES MÉCANIQUES – MECHANISCHE ERSTATZTEILE

ROLL STOPS & PARTS

BUTÉES DE ROUES & ACCESSOIRES – ABROLLSICHERUNGEN & ERSATZTEILE



Length: 798 mm

REF 111TP9057



Length: 920 mm

REF 111TP9058



- Dimensions: 92 x 22 x 22 mm
- 2G – EA 70 mm

REF 111TP9329

SPRING & GAS SPRING

RESSORTS & VÉRIN À GAZ – FEDERN & GASDRUCKFEDERN



Info	REF
Simple spring	111TP9342



Fig	Diameter mm	Info	REF
1	13	City 3G – LH	111TP9343
2	13	City 3G – RH	111TP9344

See chapter Universal parts on page 707 for more parts.

USED ON ERHEL HYDRIS



SLIDER BLOCKS, ROLLERS & WEAR PLATES

BLOCS DE DÉFILEMENT, GALETS & PLAQUES D'USURE - GLEITBLÖCKE, LAUFROLLEN & VERSCHLEISSPLATTEN



Dimensions: 210 x 50 x 55 mm

REF 111TP9295



Dimensions: 90 x 35 x 15 mm

REF 111TP9291



- Diameter: 35 mm
- Thickness: 15 mm
- For Light

REF 111TP9318

CAPS

BOUCHONS - DECKEL



Diameter: 100 mm

REF 111TP3256



Diameter: 127 mm

REF 111TP9326



Diameter: 140 mm

REF 111TP9328



Dimensions: 60 x 120 mm

REF 111TP9327

See chapter Universal parts on page 707 for more parts.

MECHANICAL PARTS - PIÈCES MÉCANIQUES - MECHANISCHE ERSTATZTEILE

USED ON ERHEL HYDRIS



MECHANICAL PARTS – PIÈCES MÉCANIQUES – MECHANISCHE ERSTATZTEILE

PLATFORM PARTS

PIÈCES DE PLATEFORME – PLATTFORMERSATZTEILE



REF 111TP9216



For foldable

REF 111TP9335



1



2

Gamme IV – 2000 to 3000 kg

1. **REF 111TP9217** – LH
2. **REF 112TP9871** – RH



1



2

Gamme IV – 1000 to 1500 kg

1. **REF 111TP9363** – LH
2. **REF 111TP9333** – RH



Steel

REF 111TP9221



- Height: 1610 mm
- Thread: 3/4"
- 84 links

REF 111TP3257



- Height: 610 mm
- Thread: 3/4"
- 32 links

REF 111TP3258



26 links

REF 111TP9240

USED ON ERHEL HYDRIS



PLATFORM PARTS

PIÈCES DE PLATEFORME – PLATTFORMERSATZTEILE



Fast link

REF 111TP9226



Thread: M12 x 75 mm

REF 111TP3260



For ZOOM P

REF 111TP9330



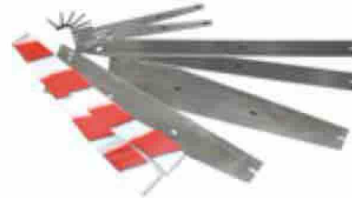
For ZOOM P 1504.65, ZOOM P 2504.90

REF 111TP9339



For ZOOM SR

REF 111TP9340



Thickness: 50 mm

REF 111TP9360 – Height: 1500 mm

REF 111TP9059 – Height: 1660 mm

REF 111TP9060 – Height: 1770 mm



11 teeth

REF 112TP6198



17 teeth

REF 111TP9341

See chapter Universal parts on page 708 for more parts.

MECHANICAL PARTS – PIÈCES MÉCANIQUES – MECHANISCHE ERSTATZTEILE

USED ON ERHEL HYDRIS



SWITCHES & CONTROLLERS – INTERRUPTEURS & COMMANDES – SCHALTER & BEDIENUNGEN

JOYSTICKS

LEVIERS DE COMMANDE – JOYSTICKS



Mafelec

REF 111TP9213



- 4 x 2 NC
- Mafelec

REF 111TP3263



- 4 x 2 NC + 2 x 2 NC
- Mafelec

REF 111TP9214



2 x 2 NC

REF 112TP6537

USED ON ERHEL HYDRIS



ROTARY/PUSH SWITCHES & PARTS

INTERRUPTEURS ROTATIFS/POUSSOIRS & ACCESSOIRES – DREH-/DRUCKSCHALTER & ERSATZTEILE



- Dimensions: $\pm 66,5 \times 47,5$ mm
- 3 pos. 1 x 2 NC

REF 111TP3264



- Dimensions: $\pm 66 \times 29 \times 47$ mm
- 3 pos. 1 x 2 NC

REF 111TP9323



- Dimensions: $\pm 67 \times 48$ mm
- 3 pos. 1 x 2 NO

REF 111TP3265



- Diameter: 30 mm
- Dimensions: $\pm 53 \times 50$ mm
- 1 x 2 NO

REF 111TP3266



- Diameter: 30 mm
- 1 x 1 NO
- 1 x 1 NC

REF 111TP9319

SWITCHES & CONTROLLERS – INTERRUPTEURS & COMMANDES – SCHALTER & BEDIENUNGEN

USED ON ERHEL HYDRIS



SWITCHES & CONTROLLERS – INTERRUPTEURS & COMMANDES – SCHALTER & BEDIENUNGEN

BATTERY/EMERGENCY SWITCHES & PARTS

COUPE BATTERIE/INTERRUPTEURS D'ARRÊT D'URGENCE & ACCESSOIRES – BATTERIE-/NOTSTOPPSCHALTER & ERSATZTEILE



Amperage: 150/1000 A (5 sec)

REF 111TP9301



- Amperage: 100 A
- M10

REF 111TP3267



2-in-1

REF 111TP3268



2-in-1

REF 111TP8090

SENSORS & SWITCHES

CAPTEURS & INTERRUPTEURS – SENSOREN & SCHALTER



Length: 2700 mm

REF 111TP9317

CONTROL BOXES & PARTS

BOÎTIERS DE CONTRÔLE & ACCESSOIRES – BEDIENKÄSTEN & ERSATZTEILE



- Type: steel
- Dimensions: 440 x 120 x 160 mm

REF 111TP3269



- Type: plastic
- Dimensions: 310 x 140 x 180 mm

REF 111TP9299

USED ON ERHEL HYDRIS



CONTROLLERS

COMMANDES - BEDIENUNGEN



Operate your tail lift with our high-quality hand controls available in 2- or 3-button configurations.

Your benefits:

- Maximum comfort, high productivity
- Unique ergonomic design
- Easy push system
- With magnet and ring for easy handling
- Rubber shock absorber
- Usable in cold and wet environments

Specifications:

- Protection (IP): IP44 according to EN 60 529
- Contact type: Mafelec (push button)
- Max amperage: 10 A
- Operating temperature: -25 °C up to 60 °C
- Material: ABS plastic with rubber buffer
- Cable: polyurethane 3,5 metres working length

Applications:

Tail lifts, winches, cranes to name a few

Available colours:

Orange, yellow, green, red and blue

Available in different colours and in 2- or 3-button configurations. Ask for your quantity discount. All models are equipped with Mafelec switches.

2-button hand controls with cable and connector

Make	Colour	REF
Erhel Hydris	Red	111TP5194
Erhel Hydris City	Red	111TP5195

3-button hand controls with cable and connector

Make	Colour	REF
Erhel Hydris	Red	111TP5207

2-button hand controls without cable

Colour	REF
Orange	111TP5214
Blue	111TP5215
Red	111TP5216
Yellow	111TP5217
Green	111TP5218

3-button hand controls without cable

Colour	REF
Orange	111TP5219
Blue	111TP5220
Yellow	111TP5221
Red	111TP5222
Green	111TP5223

SWITCHES & CONTROLLERS - INTERRUPTEURS & COMMANDES - SCHALTER & BEDIENUNGEN

USED ON ERHEL HYDRIS



SWITCHES & CONTROLLERS – INTERRUPTEURS & COMMANDES – SCHALTER & BEDIENUNGEN

CONTROLLERS

COMMANDES – BEDIENUNGEN



2 x NO

REF 111TP8092



1 x NO + 1 x NC

REF 111TP8093



Galvanized steel

REF 111TP9336



Support CAD

REF 112TP6182

See chapter Universal parts on page 712 for more parts.

FOOT CONTROLLERS & PARTS

COMMANDES AU PIED & ACCESSOIRES – FUSSSCHALTER & ERSATZTEILE



- Colour: black
- Neutral position

REF 111TP9300



- Colour: blue
- Mounted cycle

REF 112TP2165



- Colour: blue
- Downhill cycle

REF 112TP2166

USED ON ERHEL HYDRIS



BATTERY CABLES

CÂBLES DE BATTERIE - BATTERIEKABEL



- Wire size: 35 mm²
- Black
- Sold per metre

REF 111TP9044

See chapter Universal parts on page 717 for more parts.

KOSTAL CABLES

CÂBLES KOSTAL - KOSTALKABEL



- Length: 4000 mm
- Thread: M24 x 1 mm/M27 x 1 mm

REF 111TP3272



- Length: 3600 mm
- Wire size: 2 x 1 mm²

REF 111TP3275

SPIRAL CABLES

CÂBLES SPIRALÉS - SPIRALKABEL



Diameter mm	Length mm	Wire size mm ²	REF
22/35	3500	5 x 1	111TP9080

See chapter Universal parts on page 718 for more parts.

CABLES & CONNECTORS - CÂBLES & CONNECTEURS - KABEL & STECKER

USED ON ERHEL HYDRIS



CABLES & CONNECTORS – Câbles & Connecteurs – Kabel & Stecker

CONNECTORS & PARTS

CONNECTEURS & ACCESSOIRES – STECKER & ERSATZTEILE



- Amperage: 160 A
- Wire size: 35 mm²
- SBE160

REF 111TP9282



- Amperage: 250 A
- For wire sizes: 35, 40 and 50 mm²

REF 111TP3276



- Amperage: 250 A
- For wire sizes: 35, 40 and 50 mm²

REF 111TP3277



- Amperage: 150 A
- Length: 3500 mm
- Wire size: 40 mm²

REF 111TP9837



- Amperage: 150 A
- Length: 3500 mm
- Wire size: 40 mm²

REF 112TP9875



- Amperage: 250 A
- Length: 3500 mm
- Wire size: 40 mm²

REF 111TP9838



- 7-pole
- DIN 72577
- ISO 1724
- Metal

REF 111TP3278



- 7-pole
- DIN 72577
- ISO 1724
- Metal

REF 111TP3279

USED ON ERHEL HYDRIS



CONNECTORS & PARTS

CONNECTEURS & ACCESSOIRES – STECKER & ERSATZTEILE



- 7-pole
- DIN 72577
- ISO 1724
- Plastic

REF 111TP9427



- 7-pole
- DIN 72577
- ISO 1724
- Plastic

REF 111TP9223



Hirschmann (GSA)

REF 111TP3280



Diameter: 35 mm

REF 111TP9242

See chapter Universal parts on page 719 for more parts.

CABLES & CONNECTORS – Câbles & Connecteurs – Kabel & Stecker

USED ON ERHEL HYDRIS



ELECTRICAL PARTS – PIÈCES ÉLECTRIQUES – ELEKTRISCHE ERSATZTEILE

FLASHER LIGHTS & PARTS

LAMPES TORCHES & ACCESSOIRES – BLINKLEUCHTEN & ERSATZTEILE



- Voltage: 12/24 V
- Dimensions: 85 x 27 x 25 mm

REF 111TP9244



- Length: 50 mm
- Ø 20 x Ø 16 mm

REF 111TP9245



Voltage: 12/24 V

REF 111TP9254



- Built-in LED platform light
- Wireless fire with 6 leds (3 on 2 sides)
- Protective shell made of zamak
- IP68

REF 112TP9833

See chapter Universal parts on page 725 for more parts.

PRINTED CIRCUIT BOARDS/CONTROLLERS

CIRCUITS IMPRIMÉS/COMMANDES – LEITERPLATTEN/BEDIENUNGEN



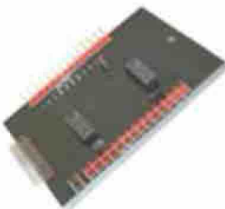
- Voltage: 12/24 V
- Dimensions: 170 x 97 x 23 mm
- SX-X1A

REF 111TP3283



- Voltage: 24 V
- Dimensions: 128 x 85 x 25 mm
- ATS (IAS) 1G

REF 111TP9285



- Voltage: 24 V
- Dimensions: 188 x 126 x 33 mm
- ATS (IAS) except for Gamme IV

REF 111TP9286



- Voltage: 12 V
- Dimensions: 128 x 85 x 25 mm
- ATS (IAS) 1G

REF 111TP9287

USED ON ERHEL HYDRIS



FUSES

FUSIBLES - SICHERUNGEN



DIN 72581/5

REF 111TP3284 - Amperage: 100 A
REF 111TP3285 - Amperage: 200 A
REF 111TP3286 - Amperage: 300 A



DIN 43560/1

REF 111TP3287 - Amperage: 100 A
REF 111TP3288 - Amperage: 200 A
REF 111TP9151 - Amperage: 400 A



Amperage: 15 A

REF 111TP9152 - Diameter: 5 mm, length: 20 mm
REF 111TP9156 - Diameter: 6,5 mm, length: 32 mm



REF 111TP3289 - Amperage: 100 A
REF 111TP9158 - Amperage: 200 A
REF 111TP9879 - Amperage: 250 A
REF 112TP2687 - Amperage: 300 A



- Amperage: 15 A
- DIN 72581/med
- Dimensions: 19 x 20 mm

REF 111TP3137

See chapter Universal parts on page 728 for more parts.

ELECTRICAL PARTS - PIÈCES ÉLECTRIQUES - ELEKTRISCHE ERSATZTEILE

USED ON ERHEL HYDRIS



ELECTRICAL PARTS – PIÈCES ÉLECTRIQUES – ELEKTRISCHE ERSATZTEILE

FUSE HOLDERS & PARTS

PORTE-FUSIBLES & ACCESSOIRES – SICHERUNGSHALTER & ERSATZTEILE



Amperage: 200 A

REF 111TP9147



Amperage: 100 A

REF 111TP9150



- Amperage: 20 A max
- DIN 72581/med

REF 111TP3290



Length: 58,7 mm

REF 111TP9148

See chapter Universal parts on page 732 for more parts.

USED ON ERHEL HYDRIS



DECALS

AUTOCOLLANTS - AUFKLEBER

HYDEM



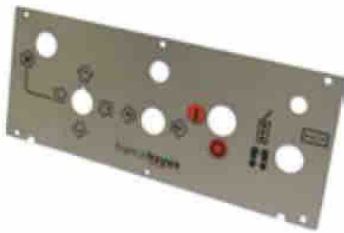
Length: 2100 mm

REF 111TP9079



Dimensions: 405 x 105 mm

REF 111TP9236



Dimensions: 300 x 120 mm

REF 111TP9237

See chapter Universal parts on page 735 for more parts.

ELECTRICAL PARTS - PIÈCES ÉLECTRIQUES - ELEKTRISCHE ERSATZTEILE

USED ON ERHEL HYDRIS



NOTES – NOTIZEN

A large area of horizontal dotted lines for taking notes.