



USED ON
**MBB PALFINGER/
PALGATE/INTERLIFT**

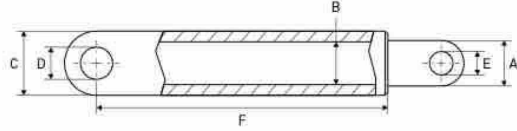
USED ON MBB PALFINGER/PALGATE/INTERLIFT



CYLINDERS – VÉRINS/CYLINDRES – ZYLINDER

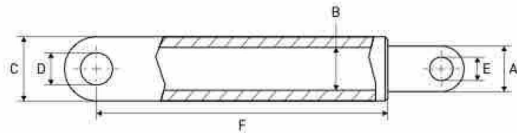
LIFT CYLINDERS

VÉRINS DE LEVAGE – HUBZYLINDER



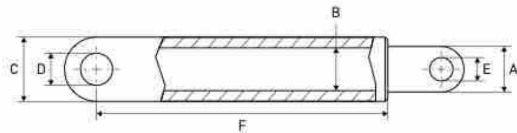
500K/750K/750KSP/750KUZ/750KUZF/1000AQ/1000KL

| A mm | B mm | C mm | D mm | E mm | F mm | REF | |
|---------|---------|---------|---------|---------|---------|-----------|-----------|
| | | | | | | Cylinder | Seal kit |
| 45 | 50 | 60 | 25 | 25 | 350 | 111TP3341 | 111TP9479 |



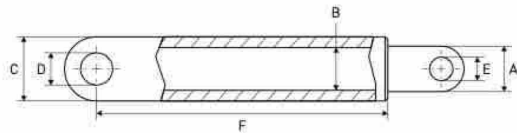
1000K/1000KF/1000KUZ/1000KUZF/1500KF/1500KL/
1500KLUZ/1500KLUZF

| A mm | B mm | C mm | D mm | E mm | F mm | REF | |
|---------|---------|---------|---------|---------|---------|-----------|-----------|
| | | | | | | Cylinder | Seal kit |
| 55 | 60 | 75 | 28 | 28 | 498 | 111TP3342 | 111TP3386 |
| 55 | 60 | 75 | 28 | 28 | 565 | 111TP9369 | 111TP3386 |



500K/2000K-700/2000KK-700/1500KUZ-700/1500KUZF-
700/2000KUZ-700/2000KUZF-700/2000KUZK-700

| A mm | B mm | C mm | D mm | E mm | F mm | REF | |
|---------|---------|---------|---------|---------|---------|-----------|-----------|
| | | | | | | Cylinder | Seal kit |
| 70 | 75 | 90 | 36 | 36 | 390 | 111TP3343 | 111TP3390 |



1500K/1500KUZ/1500KUZF/2000K/2000KK/2000KUZ/
2000KUZF/2000KUZF

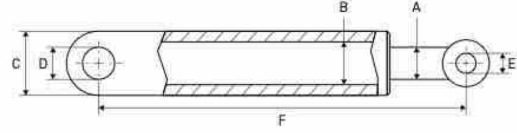
| A mm | B mm | C mm | D mm | E mm | F mm | REF | |
|---------|---------|---------|---------|---------|---------|-----------|-----------|
| | | | | | | Cylinder | Seal kit |
| 70 | 75 | 90 | 36 | 36 | 572 | 111TP3344 | 111TP3390 |
| 70 | 75 | 90 | 36 | 36 | 630 | 111TP9370 | 111TP9372 |

USED ON MBB PALFINGER/PALGATE/INTERLIFT



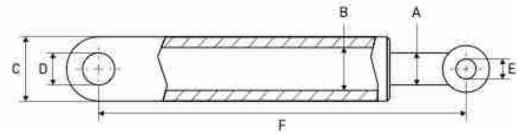
LIFT CYLINDERS

VÉRINS DE LEVAGE - HUBZYLINDER



PBS 1010

| A mm | B mm | C mm | D mm | E mm | F mm | REF Cylinder |
|---------|---------|---------|---------|---------|---------|---------------------------|
| 60 | 70 | 80 | 35 | 30 | 410 | 111TP3345 |



PBS 500/750/1000/1500

| A mm | B mm | C mm | D mm | E mm | F mm | REF | |
|---------|---------|---------|---------|---------|---------|---------------------------|---------------------------|
| | | | | | | Cylinder | Seal kit |
| 50 | 55 | 65 | 30 | 30 | 410 | 111TP3346 | 111TP9368 |
| 50 | 55 | 65 | 30 | 30 | 550 | 111TP5148 | 111TP9368 |

CYLINDERS - VÉRINS/CYLINDRES - ZYLINDER

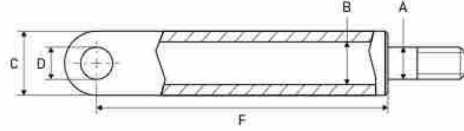
USED ON MBB PALFINGER/PALGATE/INTERLIFT



CYLINDERS – VÉRINS/CYLINDRES – ZYLINDER

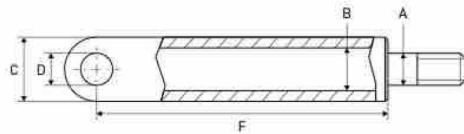
TILT CYLINDERS

VÉRIN D'INCLINAISON – SCHLISSZYLINDER



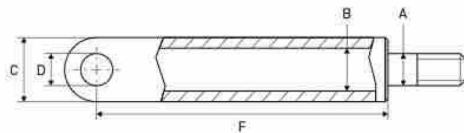
500K/750K/750KSP/750KUZ/750KUZF/1000AQ/1000KL

| A mm | B mm | C mm | D mm | E mm | F mm | REF | |
|---------|---------|---------|---------|---------|---------|-----------|-----------|
| | | | | | | Cylinder | Seal kit |
| 32 | 55 | 65 | 25 | M30 x 2 | 425 | 111TP3347 | 111TP9480 |



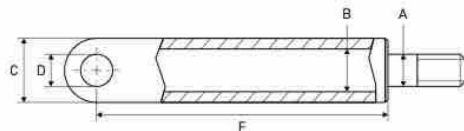
1000K/1000KF/1000KUZ/1000KUZF/1500KF/1500KL/
1500KLUZ/1500KLUZF

| A mm | B mm | C mm | D mm | E mm | F mm | REF | |
|---------|---------|---------|---------|---------|---------|-----------|-----------|
| | | | | | | Cylinder | Seal kit |
| 40 | 70 | 80 | 28 | M38 x 2 | 500 | 111TP3348 | 111TP9481 |



1500K/1500KUZ/1500KUZF/2000K/2000KK/2000KUZ/
2000KUZF/2000KUZK

| A mm | B mm | C mm | D mm | E mm | F mm | REF | |
|---------|---------|---------|---------|---------|---------|-----------|-----------|
| | | | | | | Cylinder | Seal kit |
| 45 | 80 | 95 | 36 | M44 x 2 | 495 | 111TP3349 | 111TP3384 |



PBS 500/750/1000/1500

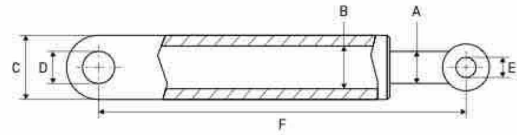
| A mm | B mm | C mm | D mm | E mm | F mm | REF | |
|---------|---------|---------|---------|------------|---------|-----------|-----------|
| | | | | | | Cylinder | Seal kit |
| 45 | 70 | 82 | 30 | M36 - Ø 45 | 545 | 111TP3350 | 111TP9367 |

USED ON MBB PALFINGER/PALGATE/INTERLIFT



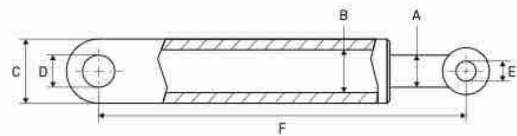
TILT CYLINDERS

VÉRIN D'INCLINAISON - SCHLISSZYLINDER



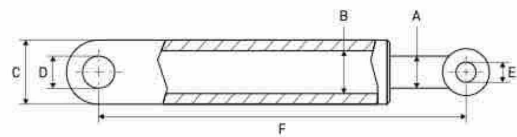
500K/750K/750KSP/750KUZ/750KUZH/1000AQ/1000KL

| A mm | B mm | C mm | D mm | E mm | F mm | Length mm | REF | |
|---------|---------|---------|---------|---------|---------|--------------|-----------|-----------|
| | | | | | | | Cylinder | Seal kit |
| 32 | 55 | 65 | 25 | 25 | 565 | 600 | 111TP3351 | 111TP9480 |
| 32 | 55 | 65 | 25 | 25 | 665 | 700 | 111TP3352 | 111TP9480 |
| 32 | 55 | 65 | 25 | 25 | 765 | 800 | 111TP3353 | 111TP9480 |



1000K/1000KF/1000KUZ/1000KUZF/1500KF/1500KL/
1500KLUZ/1500KLUZF

| A mm | B mm | C mm | D mm | E mm | F mm | Length mm | REF | |
|---------|---------|---------|---------|---------|---------|--------------|-----------|-----------|
| | | | | | | | Cylinder | Seal kit |
| 40 | 70 | 80 | 28 | 28 | 665 | 700 | 111TP3354 | 111TP9481 |
| 40 | 70 | 80 | 28 | 28 | 765 | 800 | 111TP3355 | 111TP9481 |
| 40 | 70 | 80 | 28 | 28 | 865 | 900 | 111TP3356 | 111TP9481 |



1500K/1500KUZ/1500KUZF/2000K/2000KK/2000KUZ/
2000KUZF/2000KUZK

| A mm | B mm | C mm | D mm | E mm | F mm | Length mm | REF | |
|---------|---------|---------|---------|---------|---------|--------------|-----------|-----------|
| | | | | | | | Cylinder | Seal kit |
| 45 | 80 | 95 | 36 | 36 | 653 | 700 | 111TP3357 | 111TP3384 |
| 45 | 80 | 95 | 36 | 36 | 753 | 800 | 111TP3358 | 111TP3384 |
| 45 | 80 | 95 | 36 | 36 | 853 | 900 | 111TP3359 | 111TP3384 |
| 45 | 80 | 95 | 36 | 36 | 953 | 1000 | 111TP3360 | 111TP3384 |
| 45 | 80 | 95 | 36 | 36 | 993 | 1040 | 111TP8433 | 111TP3384 |
| 45 | 80 | 95 | 36 | 36 | 1053 | 1100 | 111TP3361 | 111TP3384 |

CYLINDERS - VÉRINS/CYLINDRES - ZYLINDER

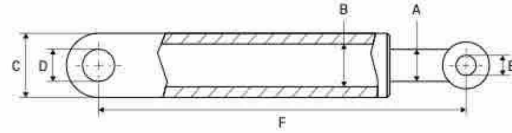
USED ON MBB PALFINGER/PALGATE/INTERLIFT



CYLINDERS – VÉRINS/CYLINDRES – ZYLINDER

FOLD CYLINDERS

VÉRINS DE REPLIAGE – FALTZYLINDER

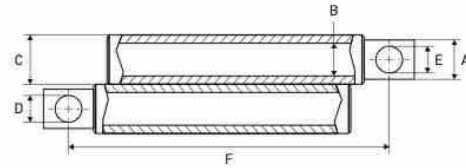


2000KUZF

| A mm | B mm | C mm | D mm | E mm | F mm | REF | |
|---------|---------|---------|---------|---------|---------|-----------|-----------|
| 30 | 40 | 45 | 20 | 20 | 360 | Cylinder | Seal kit |
| | | | | | | 111TP3364 | 111TP9377 |

RETRACTION CYLINDERS

VÉRINS DE RÉTRACTION – ZEICHZYLINDER



1000KUZF/1500KUZF/2000HUZF

| A mm | B mm | C mm | D mm | E mm | F mm | Length mm | REF | |
|---------|---------|---------|---------|---------|---------|--------------|-----------|-----------|
| 30 | 50 | 60 | 15 | 15 | 820 | 2 x 500 | Cylinder | Seal kit |
| | | | | | | | 111TP5015 | 111TP9482 |
| 30 | 50 | 60 | 15 | 15 | 820 | 2 x 600 | 111TP3362 | 111TP9482 |
| 30 | 50 | 60 | 15 | 15 | 920 | 2 x 700 | 111TP3363 | 111TP9482 |

PRESSURE EXCHANGERS

ÉCHANGERS DE PRESSION – DRUCKÜBERSETZER



| Diameter mm | Length mm | REF | |
|----------------|--------------|-----------|-----------|
| 50/70 | 180 | Cylinder | Seal kit |
| | | 111TP8212 | 111TP8435 |

USED ON MBB PALFINGER/PALGATE/INTERLIFT**HYDRAULIC LOCK**

VERROU HYDRAULIQUE - HYDRAULISCHE VERRIEGELUNG



- Diameter: 25/45 mm
- Thread: M45 x 1,5 mm

REF 111TP9371

CYLINDERS - VÉRINS/CYLINDRES - ZYLINDER

USED ON MBB PALFINGER/PALGATE/INTERLIFT

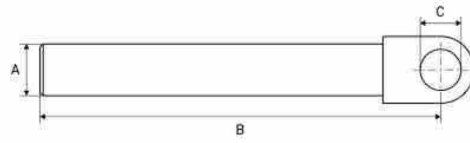


CYLINDER PARTS - PIÈCES DE CYLINDRE - ZYLINDER-ERSATZTEILE

PISTON RODS

TIGES DE PISTON - KOLBENSTANGEN

HYDEM



1

2

| Fig | A mm | B mm | C mm | Used on | REF |
|-----|---------|---------|---------|---------------|------------------|
| 1 | 45 | 350 | 25 | REF 111TP3341 | 111TP3365 |
| 2 | 55 | 450 | 28 | REF 111TP3342 | 111TP3366 |
| 1 | 70 | 390 | 36 | REF 111TP3343 | 111TP3367 |
| 1 | 70 | 460 | 36 | REF 111TP5016 | 111TP3368 |
| 1 | 70 | 505 | 36 | REF 111TP3344 | 111TP3369 |



| A mm | B mm | C mm | D mm | E mm | F mm | REF |
|---------|---------|---------|---------|---------|---------|------------------|
| 32 | M30 x 2 | 50 | 330 | 38 | 55 | 111TP3370 |
| 40 | M38 x 2 | 70 | 370 | 48 | 70 | 111TP8434 |
| 45 | M44 x 2 | 80 | 420 | 48 | 80 | 111TP3371 |

NUTS

ÉCROUS - MUTTERN



| Thread | REF |
|--------|------------------|
| M30 | 111TP3372 |
| M38 | 111TP3373 |
| M44 | 111TP3374 |

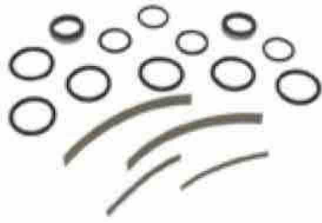
| Thread | REF |
|--------|------------------|
| M45 | 112TP2565 |

USED ON MBB PALFINGER/PALGATE/INTERLIFT



SEAL KITS

KITS DE JOINTS - DICHTUNGSSÄTZE



Diameter: 30/50 mm

REF 111TP3375



Diameter: 30/50 mm

REF 111TP3376



Diameter: 30/55 mm

REF 112TP6016



Diameter: 32/55 mm

REF 111TP3377



- Diameter: 32/55 mm
- Type 2

REF 111TP3378



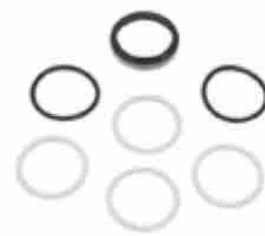
- Diameter: 40/70 mm
- Type 1

REF 111TP3379



- Diameter: 40/70 mm
- Type 2

REF 111TP3380



Diameter: 45/55 mm

REF 111TP3381

CYLINDER PARTS - PIÈCES DE CYLINDRE - ZYLINDER-ERSATZTEILE



USED ON MBB PALFINGER/PALGATE/INTERLIFT



CYLINDER PARTS - PIÈCES DE CYLINDRE - ZYLINDER-ERSATZTEILE

SEAL KITS

KITS DE JOINTS - DICHTUNGSSÄTZE



- Diameter: 45/55 mm
- Type 2

REF 111TP3382



Diameter: 45/70 mm

REF 111TP3383



Diameter: 45/80 mm

REF 111TP3384



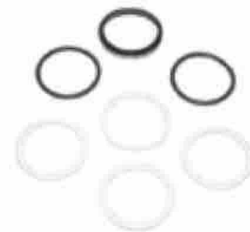
Diameter: 50/60 mm

REF 111TP3385



Diameter: 55 mm

REF 112TP3825



- Diameter: 55/65 mm
- HYDEM version, kit for HYDEM + OEM

REF 111TP3386



- Diameter: 55/65 mm
- Minifix

REF 111TP3387



- Diameter: 55/65 mm
- Type 2

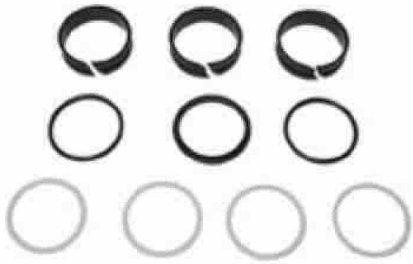
REF 111TP3388

USED ON MBB PALFINGER/PALGATE/INTERLIFT



SEAL KITS

KITS DE JOINTS - DICHTUNGSSÄTZE



Diameter: 63 mm

REF 111TP3389



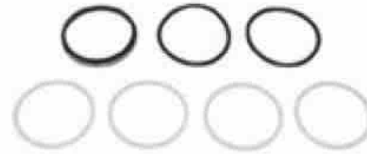
Diameter: 70/80 mm

REF 111TP3390



- Diameter: 70/80 mm
- HYDEM version, kit for HYDEM + OEM

REF 111TP9372



Diameter: 75/85 mm

REF 111TP3391



Diameter: 50/63 mm

REF 111TP8435



Diameter: 65/70 mm

REF 111TP8436



Diameter: 60/70 mm

REF 111TP8437

CYLINDER PARTS - PIÈCES DE CYLINDRE - ZYLINDER-ERSATZTEILE

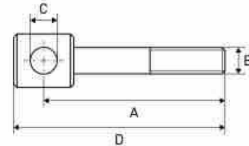
USED ON MBB PALFINGER/PALGATE/INTERLIFT



CYLINDER PARTS - PIÈCES DE CYLINDRE - ZYLINDER-ERSATZTEILE

ROD ENDS

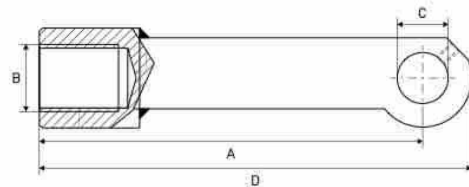
ROTULES - GELENKKÖPFE



| A mm | B mm | C mm | D mm | REF |
|---------|---------|---------|---------|---------------------------|
| 125 | M36 | 30 | 155 | 111TP3403 |
| 190 | M36 | 30 | 219 | 111TP3404 |
| 305 | M36 | 30 | 336 | 111TP3405 |

EXTENSIONS

RALLONGES - VERLÄNGERUNG



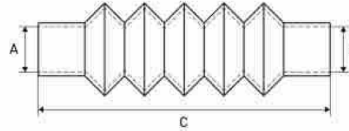
| A mm | B mm | C mm | D mm | Height mm | REF |
|---------|---------|---------|---------|--------------|---------------------------|
| 106 | M30 | 25 | 136 | 600 | 111TP3392 |
| 205 | M30 | 25 | 240 | 700 | 111TP3393 |
| 300 | M30 | 25 | 334 | 800 | 111TP3394 |
| 122 | M38 | 28 | 162 | 700 | 111TP3395 |
| 220 | M38 | 28 | 260 | 800 | 111TP3396 |
| 324 | M38 | 28 | 362 | 900 | 111TP3397 |
| 125 | M44 | 36 | 170 | 700 | 111TP3398 |
| 225 | M44 | 36 | 270 | 800 | 111TP3399 |
| 323 | M44 | 36 | 369 | 900 | 111TP3400 |
| 425 | M44 | 36 | 470 | 1000 | 111TP3401 |
| 462 | M44 | 36 | 505 | 1040 | 111TP8438 |
| 522 | M44 | 36 | 570 | 1100 | 111TP3402 |

USED ON MBB PALFINGER/PALGATE/INTERLIFT

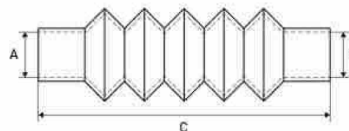


DUST COVERS

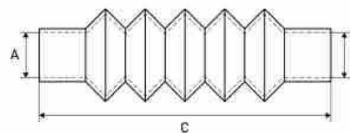
CACHE-POUSSIÈRE - STAUBKAPPE



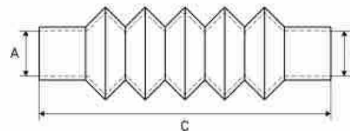
| Diameter | | Length | | REF | |
|----------|----|----------------|-----------|-----------|--|
| A | B | Min - C - max | Cover | Clamp | |
| mm | mm | mm | | | |
| 50 | 60 | 85 - 180 - 280 | 111TP8439 | 111TP4999 | |



| Diameter | | Length | | REF | |
|----------|----|---------------|-----------|-----------|--|
| A | B | Min - C - max | Cover | Clamp | |
| mm | mm | mm | | | |
| 65 | 45 | 165 - 195 | 111TP8440 | 111TP4999 | |



| Diameter | | Length | | REF | | |
|----------|----|-----------------|-----------|-----------|-----------|--|
| A | B | Min - C - max | Cover | Clamp 1 | Clamp 2 | |
| mm | mm | mm | | | | |
| 50 | 70 | 120 - 310 - 500 | 111TP3406 | 111TP4916 | 111TP4918 | |



| Diameter | | Length | | REF | | |
|----------|----|-----------------|-----------|-----------|-----------|--|
| A | B | Min - C - max | Cover | Clamp 1 | Clamp 2 | |
| mm | mm | mm | | | | |
| 75 | 60 | 110 - 250 - 450 | 111TP3407 | 111TP5005 | 111TP5005 | |

CYLINDER PARTS - PIÈCES DE CYLINDRE - ZYLINDER-ERSATZTEILE

USED ON MBB PALFINGER/PALGATE/INTERLIFT



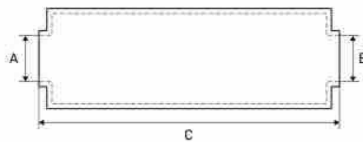
CYLINDER PARTS – PIÈCES DE CYLINDRE – ZYLINDER-ERSATZTEILE

PROTECTIVE COVERS

HOUSES DE PROTECTION – SCHUTZROHRE



| Diameter | | Length | | REF | |
|----------|----|--------|---------------------------|---------------------------|--|
| A | B | C | Cover | Clamp | |
| mm | mm | mm | | | |
| 45 | 60 | 265 | 111TP3408 | 111TP4999 | |
| 45 | 70 | 270 | 112TP5472 | 111TP4999 | |



| Diameter | | Length | | REF | |
|----------|----|--------|---------------------------|---------------------------|--|
| A | B | C | Cover | Clamp | |
| mm | mm | mm | | | |
| 45 | 65 | 315 | 111TP8441 | 111TP4999 | |



| Diameter | | Length | | REF | |
|----------|----|--------|---------------------------|---------------------------|--|
| A | B | C | Cover | Clamp | |
| mm | mm | mm | | | |
| 50 | 70 | 455 | 111TP8442 | 111TP4999 | |



| Diameter | | Length | | REF | |
|----------|----|--------|---------------------------|---------------------------|--|
| A | B | C | Cover | Clamp | |
| mm | mm | mm | | | |
| 45 | 85 | 320 | 111TP3409 | 111TP4916 | |

USED ON MBB PALFINGER/PALGATE/INTERLIFT



PROTECTIVE COVERS HOUSES DE PROTECTION - SCHUTZROHRE



| Diameter | | Length | | REF | |
|----------|----|--------|-----------|-----------|--|
| A | B | C | Cover | Clamp | |
| mm | mm | mm | | | |
| 55 | 80 | 320 | 111TP3410 | 111TP4999 | |



| Diameter | | Length | | REF | |
|----------|----|--------|-----------|-----------|--|
| A | B | C | Cover | Clamp | |
| mm | mm | mm | | | |
| 53 | 85 | 345 | 111TP9373 | 111TP4999 | |



| Diameter | | Length | | REF | |
|----------|----|--------|-----------|-----------|--|
| A | B | C | Cover | Clamp | |
| mm | mm | mm | | | |
| 60 | 93 | 265 | 111TP3411 | 111TP5003 | |



| Diameter | | Length | | REF | |
|----------|-----|--------|-----------|-----------|--|
| A | B | C | Cover | Clamp | |
| mm | mm | mm | | | |
| 65 | 105 | 360 | 111TP3412 | 111TP5003 | |

CYLINDER PARTS - PIÈCES DE CYLINDRE - ZYLINDER-ERSATZTEILE

USED ON MBB PALFINGER/PALGATE/INTERLIFT



CYLINDER PARTS - PIÈCES DE CYLINDRE - ZYLINDER-ERSATZTEILE

GUIDE RINGS

BAGUES DE GUIDAGE - FÜHRUNGSRINGE



| Diameter mm | Height mm | REF |
|----------------|--------------|------------------|
| 70/78 | 21 | 111TP3413 |
| 55/63,8 | 21 | 112TP3833 |
| 45/52 | 15 | 112TP3835 |

USED ON MBB PALFINGER/PALGATE/INTERLIFT



O-RINGS

JOINTS TORIQUES – O-RINGE



| Diameter mm | Info | REF |
|----------------|------|---------------------------|
| 8 x 2 | | 111TP3414 |
| 9,25 x 1,78 | | 111TP3415 |
| 12,5 x 1,5 | | 111TP3416 |
| 14 x 1,5 | | 111TP3417 |
| 14 x 1,7 | | 111TP3418 |
| 15,6 x 1,78 | | 111TP3419 |
| 24 x 4 | | 111TP3420 |
| 27 x 4 | | 111TP3421 |
| 28 x 3 | | 111TP3422 |
| 28 x 4 | | 111TP3423 |
| 30 x 4 | | 111TP3424 |
| 30,2 x 3 | | 111TP3425 |
| 32 x 3 | | 111TP3426 |
| 32 x 4 | | 111TP3427 |
| 36 x 3 | | 111TP3428 |
| 36 x 4 | | 111TP3429 |
| 40 x 5 | 70° | 111TP3430 |
| 45 x 4 | 70° | 111TP3431 |
| 45 x 5 | | 111TP3432 |
| 55 x 5 | | 111TP3433 |
| 60 x 3 | | 111TP3434 |
| 60 x 5 | 70° | 111TP3435 |
| 64 x 3 | | 111TP3436 |
| 108 x 3 | | 111TP3437 |
| 110,72 x 3,53 | 70° | 111TP3438 |
| 112 x 3 | | 111TP3439 |
| 215 x 5 | | 111TP3440 |

See chapter Universal parts on page 694 for more parts.

SEALS & RINGS – JOINTS & RONDELLES – DICHTUNGEN & RINGE

USED ON MBB PALFINGER/PALGATE/INTERLIFT



POWER PACKS & PARTS - GROUPE HYDRAULIQUE & ACCESSOIRES - AGGREGATE & ERSATZTEILE

COVERS

COUVERCLES - ABDECKUNGEN



| Length mm | Height mm | Width mm | REF |
|--------------|--------------|-------------|---------------------------|
| 490 | 140 | 345 | 111TP3441 |



| Length mm | Height mm | Width mm | REF |
|--------------|--------------|-------------|---------------------------|
| 456 | 195 | 425 | 111TP8218 |



| Length mm | Height mm | Width mm | REF |
|--------------|--------------|-------------|---------------------------|
| 300 | 165 | 255 | 111TP3443 |



| Length mm | Height mm | Width mm | REF |
|--------------|--------------|-------------|---------------------------|
| 315 | 130 | 272 | 111TP8444 |



| Length mm | Width mm | Info | REF |
|--------------|-------------|-----------|---------------------------|
| 540 | 210 | 2000 KUZK | 111TP3442 |

CASES

BOÎTIERS - GEHÄUSE



| Length mm | Height mm | Width mm | Thread | Info | REF |
|--------------|--------------|-------------|--------|----------|---------------------------|
| 530 | 200 | 205 | 2 x M8 | 1999-... | 111TP3444 |

USED ON MBB PALFINGER/PALGATE/INTERLIFT

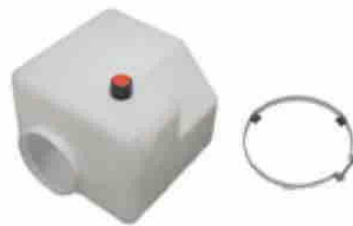


TANKS & OIL RESERVOIRS

RÉSERVOIRS (D'HUILE) - TANKS & ÖLBEHÄLTER



| Length mm | Height mm | Width mm | REF |
|-----------|-----------|----------|---------------------------|
| 245 | 147 | 150 | 111TP3445 |



| Length mm | Height mm | Width mm | Diameter mm | REF |
|-----------|-----------|----------|-------------|---------------------------|
| 230 | 140 | 190 | 109 | 111TP3447 |



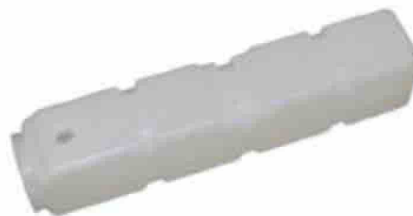
| Length mm | Width mm | Diameter mm | Volume l | REF |
|-----------|----------|-------------|----------|---------------------------|
| 250 | 245 | 110 | 6,8 | 111TP3452 |



| Length mm | Diameter mm | Volume l | REF |
|-----------|-------------|----------|---------------------------|
| 450 | 80 | 2,5 | 111TP3446 |



| Length mm | Diameter mm | REF |
|-----------|-------------|---------------------------|
| 650 | 110 | 111TP3449 |



| Length mm | Diameter mm | REF |
|-----------|-------------|---------------------------|
| 660 | 120 | 111TP3450 |



| Length mm | Diameter mm | REF |
|-----------|-------------|---------------------------|
| 280 | 130 | 111TP3451 |



| Length mm | Diameter mm | REF |
|-----------|-------------|---------------------------|
| 330 | 110 | 111TP3448 |

POWER PACKS & PARTS - GROUPE HYDRAULIQUE & ACCESSOIRES - AGGREGATE & ERSATZTEILE

USED ON MBB PALFINGER/PALGATE/INTERLIFT



POWER PACKS & PARTS – GROUPE HYDRAULIQUE & ACCESSOIRES – AGGREGATE & ERSATZTEILE

TANKS & OIL RESERVOIRS

RÉSERVOIRS (D'HUILE) – TANKS & ÖLBEHÄLTER



| Length mm | Height mm | Width mm | Diameter mm | REF |
|--------------|--------------|-------------|----------------|------------------|
| 230 | 165 | 190 | 110 | 111TP8446 |



| Length mm | Height mm | Width mm | REF |
|--------------|--------------|-------------|------------------|
| 300 | 160 | 300 | 111TP5377 |



| Diameter clamp mm | O-ring mm | REF |
|----------------------|--------------|------------------|
| 115 | 110 x 3,5 | 111TP8447 |

FILTERS & BREATHERS

FILTRES & RENIFLARDS – FILTER & ENTLÜFTER



- Diameter: 50 mm
- Height: 23 mm

REF 111TP3453



- Diameter: 53 mm
- Height: 38 mm

REF 111TP3454



- Diameter: 26,5 mm
- Length: 102 mm

REF 111TP3455



- Diameter: 80 mm
- Height: 34,5 mm
- Thread: M16 x 1,5 mm

REF 111TP8448

USED ON MBB PALFINGER/PALGATE/INTERLIFT



LOCKS

SERRURES - VERRIEGELUNGEN

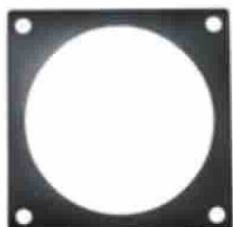


Length: 68 mm

REF 111TP3456

GASKETS

JOINTS - DICHTUNGEN



- Diameter: 82 mm
- Length: 100 mm
- Width: 100 mm

REF 111TP3457

SUCTION TUBES

TUBES D'ASPIRATION - SAUGROHRE



- Diameter: 26,5 mm
- Length: 33,5 mm
- HE6000

REF 111TP3458

HYDEM

POWER PACKS & PARTS - GROUPE HYDRAULIQUE & ACCESSOIRES - AGGREGATE & ERSATZTEILE

USED ON MBB PALFINGER/PALGATE/INTERLIFT



MOTORS, PUMPS & PARTS - MOTEURS, POMPES & ACCESSOIRES - MOTOREN, PUMPEN & ERSATZTEILE

ELECTRIC MOTORS

MOTEURS ÉLECTRIQUES - ELEKTROMOTOREN



| Voltage | kW | Rotation | REF |
|---------|-----|----------|-----------|
| 24 | 2,0 | CW >> | 111TP3460 |



| Voltage | kW | Rotation | REF |
|---------|-----|----------|-----------|
| 12 | 0,8 | << CCW | 111TP9843 |



| Voltage | kW | Rotation | REF |
|---------|-----|----------|-----------|
| 12 | 1,5 | CW >> | 111TP8129 |
| 24 | 2,0 | CW >> | 111TP3462 |



| Voltage | kW | Rotation | REF |
|---------|-----|----------|-----------|
| 24 | 3,0 | CW >> | 111TP3463 |



| Voltage | kW | Rotation | REF |
|---------|-----|----------|-----------|
| 24 | 3,0 | CW >> | 111TP3464 |



| Voltage | kW | Rotation | REF |
|---------|-----|----------|-----------|
| 12 | 1,2 | CW >> | 111TP8449 |
| 24 | 1,2 | CW >> | 111TP3465 |



| Voltage | kW | Rotation | REF |
|---------|-----|----------|-----------|
| 12 | 2,0 | CW >> | 111TP3466 |
| 24 | 2,0 | CW >> | 111TP3467 |



| Voltage | kW | Rotation | REF |
|---------|-----|----------|-----------|
| 12 | 1,7 | CW >> | 111TP3468 |
| 24 | 2,0 | CW >> | 111TP3469 |

USED ON MBB PALFINGER/PALGATE/INTERLIFT



ELECTRIC MOTORS

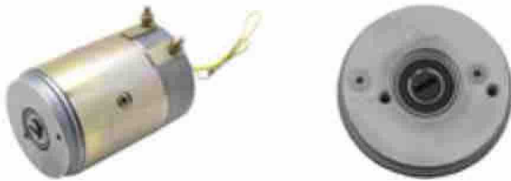
MOTEURS ÉLECTRIQUES - ELEKTROMOTOREN



| Voltage | kW | Rotation | REF |
|---------|-----|----------|-----------|
| 12 | 0,8 | CW >> | 111TP3470 |
| 24 | 0,8 | CW >> | 111TP3471 |



| Voltage | kW | Rotation | REF |
|---------|-----|----------|-----------|
| 12 | 0,8 | << CCW | 111TP3472 |
| 24 | 1,2 | << CCW | 111TP3473 |



| Voltage | kW | Rotation | REF |
|---------|-----|----------|-----------|
| 24 | 1,5 | | 112TP9961 |
| 24 | 2,0 | CW >> | 111TP8450 |



| Voltage | kW | Rotation | REF |
|---------|-----|----------|-----------|
| 24 | 2,2 | << CCW | 111TP8451 |



| Voltage | kW | Rotation | REF |
|---------|-----|----------|-----------|
| 12 | 1,5 | CW >> | 111TP8452 |



| Voltage | kW | Rotation | REF |
|---------|-----|----------|-----------|
| 12 | 2,0 | << CCW | 111TP8453 |
| 24 | 2,0 | << CCW | 111TP9092 |



HYDEM version, universal for Dhollandia, Erhel Hydris, MBB Palfinger, Zepro

| Voltage | kW | Rotation | REF |
|---------|-----|----------|-----------|
| 12 | 1,5 | CW >> | 111TP9100 |
| 24 | 2,0 | CW >> | 111TP9094 |



| Voltage | kW | Rotation | REF |
|---------|-----|----------|-----------|
| 12 | 1,1 | << CCW | 111TP9097 |

See chapter Universal parts on page 735 for more parts.

MOTORS, PUMPS & PARTS - MOTEURS, POMPES & ACCESSOIRES - MOTOREN, PUMPEN & ERSATZTEILE

USED ON MBB PALFINGER/PALGATE/INTERLIFT



MOTORS, PUMPS & PARTS - MOTEURS, POMPES & ACCESSOIRES - MOTOREN, PUMPEN & ERSATZTEILE

HYDRAULIC PUMPS

POMPES HYDRAULIQUES - HYDRAULIKPUMPEN



| CC | Rotation | REF |
|-----|----------|-----------|
| 1,2 | << CCW | 111TP3474 |
| 2,0 | << CCW | 111TP3475 |
| 2,5 | << CCW | 111TP3476 |



| CC | Rotation | REF |
|-----|----------|-----------|
| 1,1 | << CCW | 111TP3477 |
| 2 | << CCW | 111TP3478 |
| 3,3 | << CCW | 111TP3479 |



| CC | Rotation | REF |
|-----|----------|-----------|
| 1,2 | CW >> | 111TP3480 |



| CC | Rotation | REF |
|------|----------|-----------|
| 0,75 | << CCW | 111TP3481 |



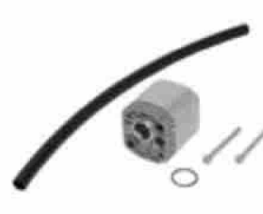
| CC | Rotation | REF |
|-----|----------|-----------|
| 2,0 | << CCW | 111TP3482 |



| CC | Rotation | REF |
|-----|----------|-----------|
| 1,0 | CW >> | 111TP3483 |



| CC | Rotation | REF |
|-----|----------|-----------|
| 1,2 | << CCW | 111TP3484 |



| CC | Rotation | REF |
|-----|----------|-----------|
| 0,8 | CW >> | 112TP9804 |
| 1,1 | CW >> | 111TP9885 |

USED ON MBB PALFINGER/PALGATE/INTERLIFT



HYDRAULIC PUMPS

POMPES HYDRAULIQUES - HYDRAULIKPUMPEN



| CC | Rotation | REF |
|-----|----------|-----------|
| 3,0 | << CCW | 112TP9805 |



| CC | REF |
|-----|-----------|
| 3,2 | 112TP6511 |



| CC | REF |
|-----|-----------|
| 2,6 | 112TP6124 |

See chapter Universal parts on page 699 for more parts.

HYDRAULIC MOTORS

MOTEUR HYDRAULIQUES - HYDRAULIKMOTOR



MP 160C

REF 112TP6131

MOTORS, PUMPS & PARTS - MOTEURS, POMPES & ACCESSOIRES - MOTOREN, PUMPEN & ERSATZTEILE

USED ON MBB PALFINGER/PALGATE/INTERLIFT



MOTORS, PUMPS & PARTS - MOTEURS, POMPES & ACCESSOIRES - MOTOREN, PUMPEN & ERSATZTEILE

| SOLENOID SWITCHES/CONTACTORS | | | | |
|---|----------|---------------|---------------------------|---------------------------|
| SOLÉNOÏDES/CONTACTEURS - MAGNETSCHALTER/SCHÜTZE | | | | |
| | Amperage | Info | REF | |
| | | | 12 V | 24 V |
|  | 80 | | 111TP8454 | |
|  | 100 | | 111TP3485 | 111TP3486 |
|  | 100 | | 111TP9425 | |
|  | 150 | 350 A (5 sec) | 111TP3492 | 111TP3487 |
|  | 150 | | 111TP3488 | 111TP3489 |

USED ON MBB PALFINGER/PALGATE/INTERLIFT



| SOLENOID SWITCHES/CONTACTORS | | | | |
|---|----------|------|---------------------------|---------------------------|
| SOLÉNOÏDES/CONTACTEURS - MAGNETSCHALTER/SCHÜTZE | | | | |
| | Amperage | Info | REF | |
| | | | 12 V | 24 V |
|  | 150 | | 112TP9806 | 112TP9807 |
|  | 100 | | 111TP3490 | 111TP3491 |
|  | 180 | | 111TP8455 | |
|  | 100 | | 111TP8456 | |
|  | 225 | | 112TP7231 | |
| See chapter Universal parts on page 701 for more parts. | | | | |

MOTORS, PUMPS & PARTS - MOTEURS, POMPES & ACCESSOIRES - MOTOREN, PUMPEN & ERSATZTEILE

USED ON MBB PALFINGER/PALGATE/INTERLIFT



MOTORS, PUMPS & PARTS – MOTEURS, POMPES & ACCESSOIRES – MOTOREN, PUMPEN & ERSATZTEILE

COUPLERS

COUPLEURS – KUPPLUNGEN



| Diameter mm | Height mm | REF |
|----------------|--------------|-----------|
| 20 | 12 | 111TP3493 |



| Diameter mm | Height mm | REF |
|----------------|--------------|-----------|
| 15 | 37 | 111TP3494 |



| Diameter mm | Height mm | REF |
|----------------|--------------|-----------|
| 18 | 48 | 111TP3495 |



| Diameter mm | Height mm | REF |
|----------------|--------------|-----------|
| 18 | 22 | 111TP3496 |



| Diameter mm | Height mm | REF |
|----------------|--------------|-----------|
| 21 | 42 | 111TP8457 |



| Diameter mm | Height mm | REF |
|----------------|--------------|-----------|
| 22 | 13 | 111TP3497 |

See chapter Universal parts on page 702 for more parts.

USED ON MBB PALFINGER/PALGATE/INTERLIFT



BRUSHES

BALAIS - KOHLEBÜRSTEN



- Voltage: 24 V
- Dimensions: 15,8 x 8,9 x 15,8 mm

REF 111TP3498



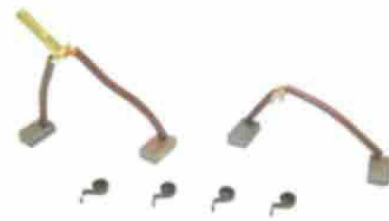
Dimensions: 24,8 x 9,9 x 22,9 mm

REF 111TP3499



Dimensions: 13 x 9 x 25 mm

REF 111TP3500



- Voltage: 24 V
- Dimensions: 12,5 x 7,3 x 19,2 mm

REF 111TP3501

BRUSH ROCKERS

COLLIERS PORTE-BALAIS - KOHLENHALTER



- Diameter: 79 mm
- Dimensions: 11,7 x 5,9 x 11,3 mm

REF 111TP3502



Diameter: 105 mm

REF 111TP3503

MOTORS, PUMPS & PARTS - MOTEURS, POMPES & ACCESSOIRES - MOTOREN, PUMPEN & ERSATZTEILE

USED ON MBB PALFINGER/PALGATE/INTERLIFT



MOTORS, PUMPS & PARTS - MOTEURS, POMPES & ACCESSOIRES - MOTOREN, PUMPEN & ERSATZTEILE

BEARINGS

ROULEMENTS - LAGER



| Diameter mm | Height mm | REF |
|-------------|-----------|-----------|
| 12/16 | 10 | 111TP3504 |



| Diameter mm | Height mm | REF |
|-------------|-----------|-----------|
| 12/32 | 10 | 111TP3505 |



| Diameter mm | Height mm | Info | REF |
|-------------|-----------|------|-----------|
| 12/32 | 10 | | 111TP3506 |
| 12/32 | 10 | C3 | 111TP3507 |
| 15/35 | 10 | | 111TP3508 |
| 17/35 | 10 | | 111TP3509 |
| 20/42 | 10 | | 111TP3510 |



| Diameter mm | Height mm | REF |
|-------------|-----------|-----------|
| 40/95 | 20 | 111TP9388 |



| Diameter mm | Height mm | REF |
|-------------|-----------|-----------|
| 40/88 | 20 | 111TP9389 |

See chapter Universal parts on page 735 for more parts.

USED ON MBB PALFINGER/PALGATE/INTERLIFT



BACK BEARING COVERS

COUVERCLES DE ROULEMENT ARRIÈRE - LAGERDECKEL HINTEN



Diameter: 125 mm

REF 111TP3511

CLAMPS

PINGES - KLAMMERN



| Length mm | REF |
|--------------|-----------|
| ± 900 | 111TP9388 |



| Diameter mm | Height mm | REF |
|----------------|--------------|-----------|
| 125 | 16 | 111TP9388 |

See chapter Universal parts on page 704 for more parts.

MOTORS, PUMPS & PARTS - MOTEURS, POMPES & ACCESSOIRES - MOTOREN, PUMPEN & ERSATZTEILE

USED ON MBB PALFINGER/PALGATE/INTERLIFT



HOSES & FITTINGS - TUYAUX & RACCORDS - SCHLÄUCHE & KUPPLUNGEN

HOSES

TUYAUX - SCHLÄUCHE



| Hose diameter | | Length mm | Fitting 1 mm | Fitting 2 mm | Info | REF |
|---------------|-----|--------------|-----------------|-----------------|------------|-----------|
| Inch | mm | | | | | |
| 13/64 | 2 | 380 | M12 x 1,5 | M12 x 1,5 | -40-100 °C | 111TP3523 |
| 13/64 | 2 | 620 | M12 x 1,5 | M12 x 1,5 | -40-100 °C | 111TP3524 |
| 5/16 | 4 | 2080 | M12 x 1,5 | M12 x 1,5 | -40-100 °C | 111TP3525 |
| 1/4 | 6,4 | 630 | M16 x 1,5 | M16 x 1,5 | -40-100 °C | 111TP3513 |
| 1/4 | 6,4 | 700 | M16 x 1,5 | M16 x 1,5 | -40-100 °C | 111TP3514 |
| 1/4 | 6,4 | 850 | M16 x 1,5 | M16 x 1,5 | -40-100 °C | 111TP3515 |
| 1/4 | 6,4 | 1400 | M16 x 1,5 | M16 x 1,5 | -40-100 °C | 111TP3516 |
| 1/4 | 6,4 | 1525 | M16 x 1,5 | M16 x 1,5 | -40-100 °C | 111TP3517 |
| 1/4 | 6,4 | 1650 | M16 x 1,5 | M16 x 1,5 | -40-100 °C | 111TP3518 |
| 1/4 | 6,4 | 2000 | M16 x 1,5 | M16 x 1,5 | -40-100 °C | 111TP3519 |
| 1/4 | 6,4 | 2200 | M16 x 1,5 | M16 x 1,5 | -40-100 °C | 111TP3520 |
| 1/4 | 6,4 | 2400 | M16 x 1,5 | M16 x 1,5 | -40-100 °C | 111TP3521 |
| 1/4 | 6,4 | 3000 | M16 x 1,5 | M16 x 1,5 | -40-100 °C | 111TP3522 |



| Hose diameter | | Length mm | Fitting 1 inch | Fitting 2 mm | Info | REF |
|---------------|-----|--------------|-------------------|------------------|------------|-----------|
| Inch | mm | | | | | |
| 1/4 | 6,4 | 2000 | BC90K - 1/4" BSP | MSFO - M16 x 1,5 | -40-100 °C | 111TP3526 |



| Hose diameter | | Length mm | Fitting 1 mm | Fitting 2 mm | Info | REF |
|---------------|-----|--------------|-----------------|-----------------|------------|-----------|
| Inch | mm | | | | | |
| 1/4 | 6,4 | 750 | M16 x 1,5 | M16 x 1,5 | -40-100 °C | 111TP3527 |

USED ON MBB PALFINGER/PALGATE/INTERLIFT



HOSES

TUYAUX - SCHLÄUCHE



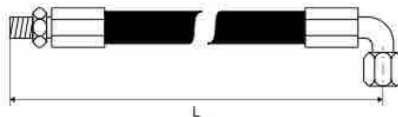
| Hose diameter | | Length mm | Fitting 1 mm | Fitting 2 mm | Info | REF |
|---------------|-----|--------------|-----------------|-----------------|------------|------------------|
| Inch | mm | | | | | |
| 1/4 | 6,4 | 850 | M16 x 1,5 | M16 x 1,5 | -40-100 °C | 111TP3528 |



| Hose diameter | | Length mm | Fitting 1 mm | Fitting 2 mm | Info | REF |
|---------------|-----|--------------|-----------------|-----------------|------------|------------------|
| Inch | mm | | | | | |
| 1/4 | 6,4 | 850 | M16 x 1,5 | M16 x 1,5 | -40-100 °C | 111TP3529 |



| Hose diameter | | Length mm | Fitting 1 mm | Fitting 2 mm | Info | REF |
|---------------|-----|--------------|-----------------|-----------------|------------|------------------|
| Inch | mm | | | | | |
| 1/4 | 6,4 | 600 | 10 | 10 | -40-100 °C | 111TP3530 |



| Hose diameter | | Length mm | Fitting 1 mm | Fitting 2 mm | Info | REF |
|---------------|-----|--------------|-----------------|-----------------|------------|------------------|
| Inch | mm | | | | | |
| 1/4 | 6,4 | 2000 | M16 x 1,5 | M16 x 1,5 | -40-100 °C | 111TP3531 |

HOSES & FITTINGS - TUYAUX & RACCORDS - SCHLÄUCHE & KUPPLUNGEN

USED ON MBB PALFINGER/PALGATE/INTERLIFT



HOSES & FITTINGS – TUYAUX & RACCORDS – SCHLÄUCHE & KUPPLUNGEN

HOSES

TUYAUX – SCHLÄUCHE



| Hose diameter | | Length mm | Fitting 1 mm | Fitting 2 mm | Info | REF |
|---------------|-----|--------------|-----------------|-----------------|------------|------------------|
| Inch | mm | | | | | |
| 1/4 | 6,4 | 600 | M16 x 1,5 | M16 x 1,5 | -40-100 °C | 111TP3532 |
| 1/4 | 6,4 | 1000 | M16 x 1,5 | M16 x 1,5 | -40-100 °C | 111TP3533 |



| Hose diameter | | Length mm | Fitting 1 mm | Fitting 2 mm | Info | REF |
|---------------|-----|--------------|-----------------|-----------------|------------|------------------|
| Inch | mm | | | | | |
| 1/4 | 6,4 | 600 | M16 x 1,5 | M16 x 1,5 | -40-100 °C | 112TP6230 |
| 1/4 | 6,4 | 680 | M16 x 1,5 | M16 x 1,5 | -40-100 °C | 112TP9351 |
| 1/4 | 6,4 | 740 | M16 x 1,5 | M16 x 1,5 | -40-100 °C | 112TP9349 |

HOSE SETS

KITS DE TUYAUX – SCHLAUCHSETS



- Diameter: 1/4"
- Length: 6 x 850 mm
- Thread: M16 x 1,5 mm
- Kit

REF 111TP3534



- Amperage: 2 x 15 A
- 1 x 200
- Length: 850 mm
- Thread: M16 x 1,5 mm
- Kit

REF 111TP8458



- Length: 4400 mm
- Kit

REF 111TP9374



USED ON MBB PALFINGER/PALGATE/INTERLIFT



| SOLENOID VALVES | | | | | | |
|---|---|-------------|--------------------|-----------|---------------------------|---------------------------|
| ÉLECTROVANNES - MAGNETVENTILE | | | | | | |
| | Type | Diameter mm | Thread | REF | | |
| | | | | 12 V | 24 V | |
|  |  | 2/2 | 15 | M20 x 1,5 | 111TP3535 | 111TP3536 |
|  |  | 2/2 | 15 | M20 x 1,5 | 111TP3537 | 111TP3538 |
|  |  | 4/2 | 13,8 x 15,3 x 16,8 | M20 x 1,5 | 111TP3539 | 111TP3540 |
|  |  | 4/2 | 15,8 x 17,4 x 18,9 | 7/8" UNF | 111TP3541 | 111TP3542 |
|  |  | 4/2 | | M20 x 1,5 | 111TP8459 | 111TP8460 |
|  |  | 2/2 | 15 | M20 x 1,5 | 112TP5528 | 112TP9962 |
|  |  | 2/2 | 14 | 3/4 16UNF | 112TP6319 | |
|  |  | 2/2 | 14 | M20 x 1,5 | 112TP9809 | 112TP6011 |
|  |  | 2/2 | 14 | M18 x 1,5 | 112TP6013 | 112TP9810 |


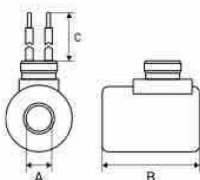
COILS & VALVES - BOBINES & SOUPAPES - SPULEN & VENTILE

USED ON MBB PALFINGER/PALGATE/INTERLIFT



COILS & VALVES – BOBINES & SOUPAPES – SPULEN & VENTILE

| CARTRIDGES CARTOUCHES – PATRONEN | | | | | |
|---|---|------|----------------|-----------|---------------------------|
| | | Type | Diameter mm | Thread | REF |
|  |  | 4/2 | 18 | 3/4" UNF | 111TP8461 |
|  |  | 2/2 | 18 | M20 x 1,5 | 111TP8462 |
|  |  | 4/2 | 18 | M20 x 1,5 | 111TP8463 |
|  |  | 4/2 | 18 | M20 x 1,5 | 111TP8464 |
|  |  | 4/2 | 18 | M20 x 1,5 | 111TP8465 |

| COILS BOBINES – SPULEN | | | |
|---|---|-----------------|---------------------------|
|  |  | | |
| Voltage | A mm | B mm | REF |
| 12 | 18 | 50 | 111TP3543 |
| 24 | 18 | 50 | 111TP3544 |

USED ON MBB PALFINGER/PALGATE/INTERLIFT



VALVE BLOCKS

BOÎTIERS À SOUPAPES – STEUERBLÖCKE



Voltage: 12 V

REF 111TP3545



Voltage: 24 V

REF 111TP3546



- Voltage: 24 V
- 2-positions

REF 112TP6142



- Length: 195 mm
- Height: 75,3 mm
- Width: 89,5 mm

REF 111TP3547



- Diameter: 3 x 1/4"
- Length: 62 mm
- Height: 24,5 mm
- Width: 40 mm

REF 111TP8466



- Length: 95 mm
- Height: 48 mm
- Width: 95 mm

REF 111TP8443



- Length: 89 mm
- Height: 75 mm
- Width: 89 mm

REF 111TP8467

COILS & VALVES – BOBINES & SOUPAPES – SPULEN & VENTILE

USED ON MBB PALFINGER/PALGATE/INTERLIFT



COILS & VALVES – BOBINES & SOUPAPES – SPULEN & VENTILE

REGULATING VALVES

SOUPAPES DE RÉGULATION – REGELVENTILE



| Info | REF |
|-------------|------------------|
| 1 litre/min | 111TP3549 |



| Info | REF |
|-------------|------------------|
| 3 litre/min | 111TP3550 |



| Info | REF |
|-------------|------------------|
| 4 litre/min | 111TP8468 |

VALVES & SWITCHES

SOUPAPES & INTERRUPTEURS – VENTILE & SCHALTER



2,6 bar – NC

REF 111TP3551



4–4,5 bar – NO

REF 111TP3552



Cap: REF 111TP3551

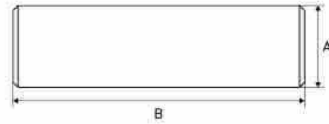
REF 111TP8469

USED ON MBB PALFINGER/PALGATE/INTERLIFT

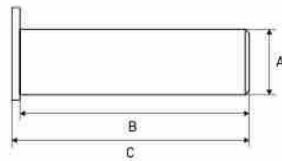


PINS

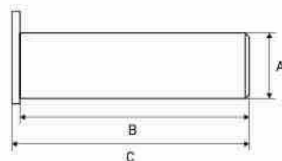
AXES - ACHSEN



| A mm | B mm | Thread mm | REF |
|---------|---------|--------------|-----------|
| 25 | 82 | M12 x 1 | 111TP3553 |



| A mm | B mm | Thread mm | REF |
|---------|---------|--------------|-----------|
| 30 | 62 | M8 x 1 | 111TP8470 |



| A mm | B mm | Thread mm | REF |
|---------|---------|--------------|-----------|
| 30 | 66 | M8 x 1 | 111TP3554 |
| 30 | 95 | M8 x 1 | 111TP3555 |
| 30 | 113 | M8 x 1 | 111TP3556 |
| 30 | 128 | M8 x 1 | 111TP3557 |
| 30 | 153 | M8 x 1 | 111TP3558 |
| 40 | 65 | M8 x 1 | 111TP3559 |

PINS, BUSHINGS & ROLLERS - AXES, BAGUES & GALETS - ACHSEN, BUCHSEN & ROLLEN

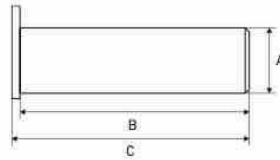
USED ON MBB PALFINGER/PALGATE/INTERLIFT



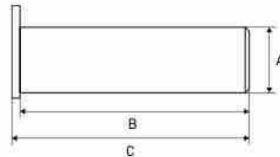
PINS, BUSHINGS & ROLLERS - AXES, BAGUES & GALETS - ACHSEN, BUCHSEN & ROLLEN

PINS

AXES - ACHSEN



| A mm | B mm | Thread mm | REF |
|---------|---------|--------------|---------------------------|
| 25 | 48 | M10 x 1 | 111TP3570 |
| 25 | 55 | M10 x 1 | 111TP3560 |
| 25 | 114 | M10 x 1 | 111TP3561 |
| 28 | 58 | M10 x 1 | 111TP3562 |
| 28 | 74 | M10 x 1 | 111TP3563 |
| 28 | 98 | M10 x 1 | 111TP3564 |
| 28 | 108 | M10 x 1 | 111TP3565 |
| 28 | 115 | M10 x 1 | 111TP3566 |
| 28 | 120 | M10 x 1 | 111TP3567 |
| 28 | 445 | M10 x 1 | 111TP3568 |
| 36 | 105 | M10 x 1 | 111TP8471 |
| 36 | 170 | M10 x 1 | 111TP3569 |



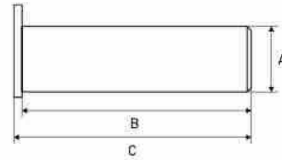
| A mm | B mm | REF | |
|---------|---------|---------------------------|---------------------------|
| | | | HYDEM version |
| 25 | 99 | 111TP3571 | |
| 25 | 114 | 111TP3572 | |
| 28 | 48 | 111TP3573 | |
| 28 | 56 | 111TP3574 | |
| 28 | 72 | 111TP8472 | |
| 28 | 90 | 111TP3575 | 111TP9385 |
| 28 | 119 | 111TP3576 | 111TP9386 |
| 28 | 155 | 111TP3577 | |
| 36 | 80 | 111TP3578 | |
| 36 | 81 | 111TP3579 | 111TP9387 |
| 36 | 92 | 111TP3580 | |
| 36 | 105 | 111TP3581 | |
| 36 | 106 | 111TP3582 | |
| 36 | 120 | 111TP3583 | |
| 40 | 85 | 111TP3584 | |
| 40 | 105 | 111TP3585 | |
| 40 | 145 | 111TP3586 | |
| 50 | 125 | 111TP3587 | |

USED ON MBB PALFINGER/PALGATE/INTERLIFT

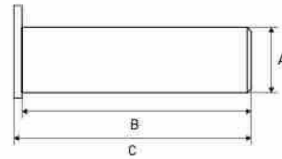


PINS

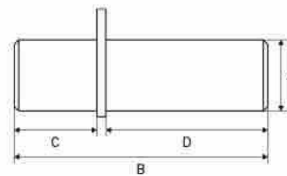
AXES - ACHSEN



| A mm | B mm | REF | |
|---------|---------|-----------|------------------|
| | | | HYDEM version |
| 25 | 169 | 111TP3588 | |
| 28 | 170 | 111TP3589 | 111TP9382 |
| 36 | 198 | 111TP3590 | |



| A mm | B mm | REF | |
|---------|---------|-----------|------------------|
| | | | HYDEM version |
| 28 | 125 | 111TP3591 | |
| 36 | 198 | 111TP3592 | 111TP9383 |
| 40 | 185 | 111TP3593 | |



| A mm | B mm | C mm | D mm | Thread mm | REF |
|---------|---------|---------|---------|--------------|-----------|
| 28 | 168 | 64 | 89 | M10 x 1 | 111TP3594 |
| 28 | 187 | 64 | 109 | M10 x 1 | 111TP3595 |
| 36 | 205 | 90 | 100 | M10 x 1 | 111TP3596 |
| 36 | 213 | 92 | 106 | M10 x 1 | 111TP3597 |
| 36 | 222 | 91 | 116 | M10 x 1 | 111TP3598 |

PINS, BUSHINGS & ROLLERS - AXES, BAGUES & GALETS - ACHSEN, BUCHSEN & ROLLEN

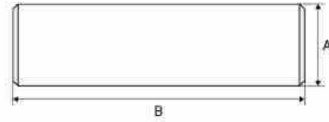
USED ON MBB PALFINGER/PALGATE/INTERLIFT



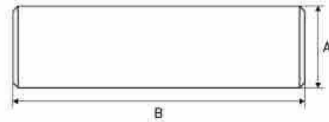
PINS, BUSHINGS & ROLLERS - AXES, BAGUES & GALETS - ACHSEN, BUCHSEN & ROLLEN

PINS

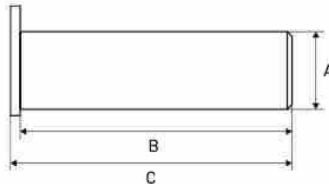
AXES - ACHSEN



| A mm | B mm | REF |
|---------|---------|-----------|
| 30 | 90 | 112TP6162 |



| A mm | B mm | REF |
|---------|---------|-----------|
| 36 | 80 | 112TP6373 |
| 40 | 94 | 112TP9627 |
| 36 | 210 | 112TP6374 |



| A mm | B mm | REF |
|---------|---------|-----------|
| 30 | 179 | 112TP6166 |



Diameter: 30 mm

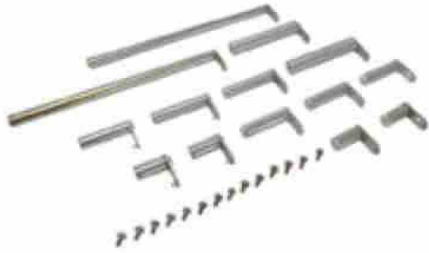
REF 112TP6152

USED ON MBB PALFINGER/PALGATE/INTERLIFT



PIN SETS

KITS D'AXES - ACHSENSETS



HFL

REF 111TP3599



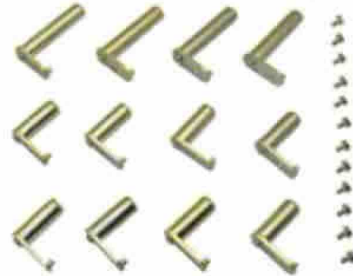
500 Minifix

REF 111TP3600



750K

REF 111TP3601



500-750K/KSP - 1000KL/AQ

REF 111TP3602



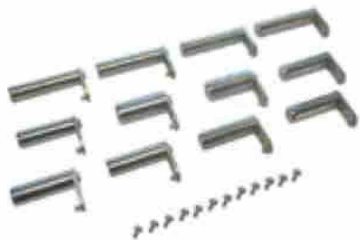
1000 Athlet

REF 111TP3603



1000K

REF 111TP3604



1000K - 1500KL - Alu

REF 111TP3605

REF 111TP9378 - HYDEM version



1000K - 1500KL - steel

REF 111TP3606

PINS, BUSHINGS & ROLLERS - AXES, BAGUES & GALETS - ACHSEN, BUCHSEN & ROLLEN

USED ON MBB PALFINGER/PALGATE/INTERLIFT



PINS, BUSHINGS & ROLLERS - AXES, BAGUES & GALETS - ACHSEN, BUCHSEN & ROLLEN

PIN SETS

KITS D'AXES - ACHSENSETS



1500-2000K/KK/KUZ/KUZK

REF 111TP3607



1500K/700 - 2000K/700

REF 111TP3608



2000 KUZF/BDF

REF 111TP3609



2000K/800-1100

REF 111TP3610



3000K

REF 111TP3611



3000K - 3000KUZ

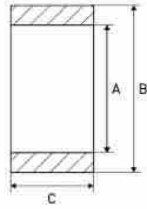
REF 111TP3612

USED ON MBB PALFINGER/PALGATE/INTERLIFT

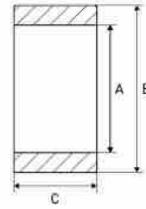


PLATFORM ROLLERS

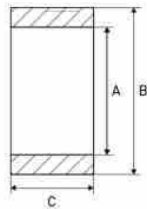
GALETS DE HAYON - PLATTFORMROLLEN



| A mm | B mm | C mm | REF |
|---------|---------|---------|------------------|
| 25 | 80 | 52 | 111TP3613 |
| 29 | 100 | 53 | 111TP3614 |
| 36,5 | 110 | 74 | 111TP3615 |



| A mm | B mm | C mm | REF |
|---------|---------|---------|------------------|
| 31 | 90 | 45 | 111TP3616 |
| 41 | 115 | 60 | 111TP3617 |



| A mm | B mm | C mm | REF |
|---------|---------|---------|------------------|
| 12,8 | 100 | 40 | 112TP5399 |

PINS, BUSHINGS & ROLLERS - AXES, BAGUES & GALETS - ACHSEN, BUCHSEN & ROLLEN

USED ON MBB PALFINGER/PALGATE/INTERLIFT



PINS, BUSHINGS & ROLLERS - AXES, BAGUES & GALETS - ACHSEN, BUCHSEN & ROLLEN

PLATFORM ROLLER SETS

KITS DE GALETS DE HAYON - PLATTFORMROLLENSETS



- Diameter: 25/80 x 50 mm
- Length: 170 mm

REF 111TP3618



- Diameter: 28/100 x 50 mm
- Length: 155 mm

REF 111TP3619



- Diameter: 25/80 x 50 mm
- Length: 168 mm

REF 111TP3620



- Diameter: 28/100 x 49 mm
- Length: 170 mm
- 1000K

REF 111TP3621

REF 111TP9379 - HYDEM version



- Diameter: 28/100 x 50 mm
- Length: 187 mm

REF 111TP3622



- Diameter: 36/110 x 74 mm
- Length: 197 mm

REF 111TP3623

REF 111TP9384 - HYDEM version



- Diameter: 36/110 x 74 mm
- Length: 205 mm

REF 111TP3624



- Diameter: 36/110 x 74 mm
- Length: 213 mm

REF 111TP3625



- Diameter: 36/110 x 74 mm
- Length: 222 mm

REF 111TP3626



- Diameter: 41/115 x 60 mm
- Length: 185 mm
- 1000K

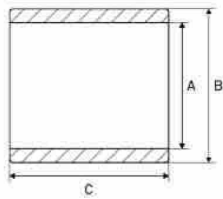
REF 111TP3627

USED ON MBB PALFINGER/PALGATE/INTERLIFT

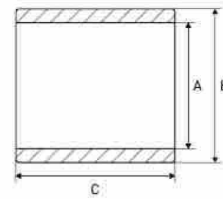


BUSHINGS

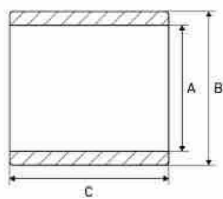
BAGUES - BUCHSEN



| A mm | B mm | C mm | Info | REF |
|------|------|------|------|---------------------------|
| 25 | 28 | 15 | DX | 111TP3629 |
| 30 | 34 | 15 | DX | 111TP3630 |
| 30 | 34 | 20 | DX | 111TP3631 |
| 30 | 34 | 30 | DX | 111TP3632 |
| 30 | 34 | 40 | DX | 111TP3633 |
| 35 | 39 | 20 | DX | 111TP3634 |
| 40 | 44 | 30 | DX | 111TP3635 |



| A mm | B mm | C mm | REF |
|------|------|------|---------------------------|
| 25 | 29 | 31 | 111TP3636 |
| 28 | 32 | 31 | 111TP3637 |
| 28 | 32 | 36 | 111TP3638 |
| 28 | 32 | 48 | 111TP3639 |
| 36 | 40 | 36 | 111TP3640 |
| 36 | 40 | 39 | 111TP3641 |
| 36 | 40 | 41 | 111TP3642 |
| 40 | 44 | 41 | 111TP3643 |
| 50 | 55 | 41 | 111TP3644 |
| 36 | 40 | 50 | 111TP3628 |



| A mm | B mm | C mm | REF |
|------|------|------|---------------------------|
| 25 | 28 | 20 | 111TP8473 |

See chapter Universal parts on page 705 for more parts.

PINS, BUSHINGS & ROLLERS - AXES, BAGUES & GALETS - ACHSEN, BUCHSEN & ROLLEN

USED ON MBB PALFINGER/PALGATE/INTERLIFT



PINS, BUSHINGS & ROLLERS - AXES, BAGUES & GALETS - ACHSEN, BUCHSEN & ROLLEN

BUSHING SETS

KITS DE BAGUES - BUCHSENSETS



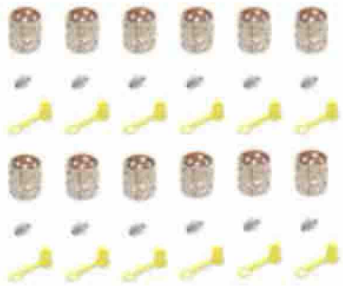
HFL

REF 111TP3645



500 Minifix

REF 111TP3646



500-750K/KSP - 1000KL

REF 111TP3647



1000 Athlet

REF 111TP3648



1000K/1500KL/1000KUZ/1500KLUZ

REF 111TP3649



1500-2000K/KK/KUZ/KUZK

REF 111TP3650



3000K/3000KZ

REF 111TP3651

USED ON MBB PALFINGER/PALGATE/INTERLIFT



ROLL STOPS & PARTS

BUTÉES DE ROUES & ACCESSOIRES – ABROLLSICHERUNGEN & ERSATZTEILE



- Length: 25 mm
- Width: 22 mm

REF 111TP3660

SPRINGS & GAS SPRINGS

RESSORTS & VÉRINS À GAZ – FEDERN & GASDRUCKFEDERN



| Diameter mm | Length mm | REF |
|----------------|--------------|------------------|
| 69 | 171 | 111TP8226 |



| Diameter mm | Length mm | REF |
|----------------|--------------|------------------|
| 59 | 224 | 111TP8227 |



| Diameter mm | Length mm | REF |
|----------------|--------------|------------------|
| 59 | 224 | 111TP8474 |



| Diameter mm | Length mm | Width mm | REF |
|----------------|--------------|-------------|------------------|
| 3,5 | 127 | 43 | 111TP3661 |



| Diameter mm | Length mm | Width mm | REF |
|----------------|--------------|-------------|------------------|
| 4 | 85 | 85 | 111TP3662 |



| Diameter mm | Length mm | Width mm | REF |
|----------------|--------------|-------------|------------------|
| 13,2 | 1140 | 270 | 111TP8475 |



| Diameter mm | Length mm | REF |
|----------------|--------------|------------------|
| 20 | 2500 | 111TP8592 |

See chapter Universal parts on page 707 for more parts.

MECHANICAL PARTS – PIÈCES MÉCANIQUES – MECHANISCHE ERSTATZTEILE

USED ON MBB PALFINGER/PALGATE/INTERLIFT



MECHANICAL PARTS - PIÈCES MÉCANIQUES - MECHANISCHE ERSTATZTEILE

BUMPERS & BUFFERS

PARE-CHOCS & BUTOIRS - STOSSDÄMPFER & -PUFFER



- Diameter: 50 x 20 mm
- Thread: M12

REF 111TP3663



- Length: 210 mm
- Height: 50 mm
- Width: 55 mm

REF 111TP3664



- Diameter: 50 x 21 mm
- Length: 140 mm
- Thread: M12

REF 111TP8476

CAPS

BOUCHONS - DECKEL



1

Length: 280 mm

1. **REF 111TP3665** - LH
2. **REF 111TP3666** - RH



2



1

Length: 380 mm

1. **REF 111TP3667** - LH
2. **REF 111TP3668** - RH



2



- REF 111TP3670** - Dimensions (L x W): 100 x 50 mm
REF 111TP3669 - Dimensions (L x W): 120 x 60 mm



- REF 111TP3671** - Diameter: 42 mm
REF 111TP3672 - Diameter: 45 mm
REF 111TP3673 - Diameter: 70 mm
REF 111TP3674 - Diameter: 102 mm

USED ON MBB PALFINGER/PALGATE/INTERLIFT



CAPS

BOUCHONS - DECKEL



- REF 111TP3675** - Dimensions (L x W): 100 x 100 mm
- REF 111TP3677** - Dimensions (L x W): 130 x 123 mm
- REF 111TP3678** - Dimensions (L x W): 180 x 180 mm



1

2

Length: 137 mm

- 1. **REF 111TP3681** - LH
- 2. **REF 111TP3683** - RH



1

2

Length: 137 mm

- 1. **REF 111TP3684** - LH
- 2. **REF 111TP3682** - RH



1

2

Length: 177 mm

- 1. **REF 111TP3688** - LH
- 2. **REF 111TP3687** - RH



REF 111TP8477 - Dimensions (L x W): 215 x 195 mm



REF 111TP3680 - With support sensor

See chapter Universal parts on page 707 for more parts.

MECHANICAL PARTS - PIÈCES MÉCANIQUES - MECHANISCHE ERSTATZTEILE

USED ON MBB PALFINGER/PALGATE/INTERLIFT



MECHANICAL PARTS – PIÈCES MÉCANIQUES – MECHANISCHE ERSTATZTEILE

PLATFORM PARTS

PIÈCES DE PLATEFORME – PLATTFORMERSATZTEILE



1. REF 111TP8478 – LH
2. REF 111TP8479 – RH



- Diameter distance: 6,7 mm
- 4 holes

REF 111TP8480



- Length: 195 mm
- Height: 21 mm
- Width: 195 mm

REF 111TP8481



Length: 355 mm

1. REF 111TP3685 – LH
2. REF 111TP3686 – RH



Length: 450 mm

1. REF 111TP3689 – LH
2. REF 111TP3690 – RH



Length: 800 mm

REF 112TP6117



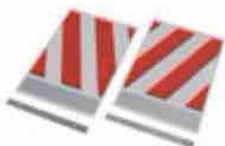
- Length: 400 mm
- Width: 250
- § 53b Abs. 5 StVZO
- TÜV/CE with certificate

REF 111TP3691



- Length: 400 mm
- Width: 250
- § 53b Abs. 5 StVZO
- TÜV/CE with certificate

REF 111TP1320



- Length: 300 mm
- Width: 200 mm

REF 111TP3692



- Handle
- Dimensions: 78 x 21 mm

REF 112TP5330

See chapter Universal parts on page 708 for more parts.

USED ON MBB PALFINGER/PALGATE/INTERLIFT



GREASE FITTINGS & CAPS

RACCORDS DE GRAISSAGE & BOUCHONS – SCHMIERNIPPEL & SCHUTZKAPPEN



| Type thread mm | Info | REF |
|-------------------|------|------------------|
| M10 x 1 | 180° | 111TP3693 |



| Type thread mm | Info | REF |
|-------------------|----------|------------------|
| M10 x 1 | With cap | 111TP3694 |



| Type thread mm | REF |
|-------------------|------------------|
| M6 | 111TP3695 |

See chapter Universal parts on page 710 for more parts.

MECHANICAL PARTS – PIÈCES MÉCANIQUES – MECHANISCHE ERSTATZTEILE

USED ON MBB PALFINGER/PALGATE/INTERLIFT



SWITCHES & CONTROLLERS – INTERRUPTEURS & COMMANDES – SCHALTER & BEDIENUNGEN

JOYSTICKS

LEVIERS DE COMMANDE – JOYSTICKS



I-O-II

REF 111TP3700



- Length: 430 mm
- 6-pole

REF 111TP3828



2 x NC

REF 112TP6537



REF 112TP6175

USED ON MBB PALFINGER/PALGATE/INTERLIFT



ROTARY/PUSH SWITCHES & PARTS

INTERRUPTEURS ROTATIFS/POUSOIRS & ACCESSOIRES - DREH-/DRUCKSCHALTER & ERSATZTEILE



3-positions

REF 111TP3701



2-positions

REF 111TP3702



K - new version

REF 111TP3703



- Length: 70 mm
- Height: 36 mm
- Width: 45 mm

REF 111TP8482



Lever contactor + hood

REF 112TP6252



- Inverter 2 positions
- 2 fixed positions

REF 112TP8299



- Black pusher, push button head
- IP66

REF 112TP6253

SWITCHES & CONTROLLERS - INTERRUPTEURS & COMMANDES - SCHALTER & BEDIENUNGEN

USED ON MBB PALFINGER/PALGATE/INTERLIFT



SWITCHES & CONTROLLERS - INTERRUPTEURS & COMMANDES - SCHALTER & BEDIENUNGEN

CONTACT ELEMENTS

BLOCS DE CONTACT - KONTAKTELEMENTE



2 x NO

REF 111TP3715



2 x NO

REF 111TP3716



1 x NC

REF 111TP3717



1 x NO

REF 111TP8483

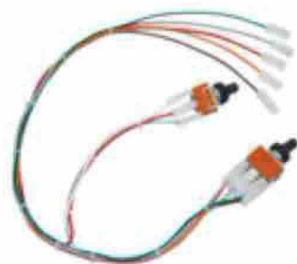


1 x NO

REF 111TP8484

TOGGLE SWITCHES

INTERRUPTEURS À LEVIER - KIPPSCHALTER



- Voltage: 250 V
- Amperage: 15 A

REF 111TP3789

USED ON MBB PALFINGER/PALGATE/INTERLIFT



BATTERY/EMERGENCY SWITCHES & PARTS

COUPE BATTERIE/INTERRUPTEURS D'ARRÊT D'URGENCE & ACCESSOIRES - BATTERIE-/NOTSTOPPSCHALTER & ERSATZTEILE



Amperage: 150/1000 A (5 sec)

REF 111TP2931



1 x NC

REF 111TP3718



1 x NC

REF 112TP9811



Diameter: 11 mm

REF 111TP8485



- Diameter: 22 mm
- E23

REF 111TP3721



- Length: 30,5 mm
- Width: 25 mm
- 4 contacts

REF 111TP3720



- Diameter: 22 mm
- 4 contacts

REF 111TP3722



- Diameter: 14 mm
- 3 contacts

REF 111TP8486

SWITCHES & CONTROLLERS - INTERRUPTEURS & COMMANDES - SCHALTER & BEDIENUNGEN

USED ON MBB PALFINGER/PALGATE/INTERLIFT



SWITCHES & CONTROLLERS – INTERRUPTEURS & COMMANDES – SCHALTER & BEDIENUNGEN

MICRO SWITCHES WITH CABLE

MICRORUPTEURS AVEC CÂBLE – MIKROSCHALTER MIT KABEL



| Voltage | Amperage | Length mm | IP | REF |
|---------|----------|-----------|----|------------------|
| 250 | 5 | 500 | 66 | 111TP3748 |



| Voltage | Amperage | Length mm | IP | REF |
|---------|----------|-----------|----|------------------|
| 250 | 5 | 1500 | 66 | 111TP3749 |

SENSORS & SWITCHES

CAPTEURS & INTERRUPTEURS – SENSOREN & SCHALTER



- Length: 5500 mm
- B15

REF 111TP3729



- Length: 4000 mm
- B16

REF 111TP3730



- Length: 2900 mm
- B16

REF 111TP8488



- Length: 4000 mm
- B16

REF 111TP3731



- Length: 5500 mm
- B16

REF 111TP3732



- Length: 2900 mm
- B16

REF 111TP8492

USED ON MBB PALFINGER/PALGATE/INTERLIFT



SENSORS & SWITCHES

CAPTEURS & INTERRUPTEURS – SENSOREN & SCHALTER



- Length: 3100 mm
- B13 – K+H1+K1+

REF 111TP3737



- Length: 2700 mm
- B13 – Athlet

REF 111TP3738



- Length: 300 mm
- B13 – H

REF 111TP3739



- Length: 3100 mm
- B13

REF 111TP8489



- Length: 2000 mm
- B13

REF 111TP3741



- Length: 3100 mm
- B13

REF 111TP8490



- Length: 5130 mm
- B13

REF 111TP8493



- Length: 2100 mm
- B16

REF 111TP8494

SWITCHES & CONTROLLERS – INTERRUPTEURS & COMMANDES – SCHALTER & BEDIENUNGEN

USED ON MBB PALFINGER/PALGATE/INTERLIFT



SWITCHES & CONTROLLERS – INTERRUPTEURS & COMMANDES – SCHALTER & BEDIENUNGEN

SENSORS & SWITCHES

CAPTEURS & INTERRUPTEURS – SENSOREN & SCHALTER



Length: 4500 mm

REF 111TP3740



Length: 1400 mm

REF 111TP3742



- Length: 480 mm
- Dimensions: 73 x 29.5 x 18,3 mm

REF 111TP3747



- Voltage: 10/36 VDC
- Length: 2000 mm
- NO – PUR

REF 111TP3733



- Voltage: 10/36 VDC
- Length: 2000 mm
- NC – PUR

REF 111TP3734



- Voltage: 12/24 V
- Length: 2500 mm
- IP67

REF 111TP3735



- Voltage: 10/55 VDC
- Length: 6000 mm
- NO/NC – programmable – PUR

REF 111TP3736



- Length: 68 mm
- Width: 37 mm
- B8

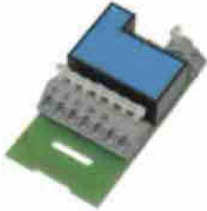
REF 111TP3744

USED ON MBB PALFINGER/PALGATE/INTERLIFT



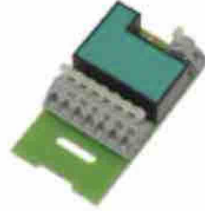
SENSORS & SWITCHES

CAPTEURS & INTERRUPTEURS – SENSOREN & SCHALTER



- Length: 68 mm
- Width: 37 mm
- B9

REF 111TP3743



- Length: 68 mm
- Width: 37 mm
- B10

REF 111TP3745



Length: 2070 mm

REF 111TP3746



Length: 3100 mm

REF 111TP8491



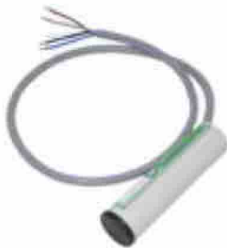
- Diameter: 25 x 99 mm
- Voltage: 12/24 V
- Length: 560 mm

REF 111TP8495



- Diameter: 18 x 100 mm
- Voltage: 12/24 V
- Length: 670 mm

REF 111TP3836



- Diameter: 25 x 100 mm
- Voltage: 12/24 V
- Length: 550 mm

REF 111TP1978

SWITCHES & CONTROLLERS – INTERRUPTEURS & COMMANDES – SCHALTER & BEDIENUNGEN

USED ON MBB PALFINGER/PALGATE/INTERLIFT



SWITCHES & CONTROLLERS – INTERRUPTEURS & COMMANDES – SCHALTER & BEDIENUNGEN

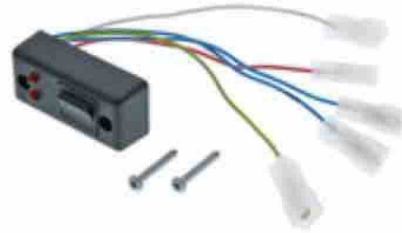
CONTROL BOXES & PARTS

BOÎTIERS DE CONTRÔLE & ACCESSOIRES – BEDIENKÄSTEN & ERSATZTEILE



Voltage: 12/24 V

REF 111TP3723



Voltage: 12/24 V

REF 111TP3724



- Length: 405 mm
- Width: 170 mm
- Height: 125 mm

REF 111TP3725



- Length: 300 mm
- Width: 190 mm
- Height: 130 mm
- K+

REF 111TP3726



- Length: 405 mm
- Width: 170 mm
- Height: 125 mm
- K+

REF 111TP3727



- Length: 300 mm
- Width: 175 mm
- Height: 130 mm
- K+

REF 111TP3728



- Length: 300 mm
- Width: 160 mm
- Height: 110 mm
- K+

REF 111TP8487

USED ON MBB PALFINGER/PALGATE/INTERLIFT



CONTROLLERS

COMMANDES - BEDIENUNGEN



HYDEM

Operate your tail lift with our high-quality hand controls available in 2- or 3-button configurations.

Your benefits:

- Maximum comfort, high productivity
- Unique ergonomic design
- Easy push system
- With magnet and ring for easy handling
- Rubber shock absorber
- Usable in cold and wet environments

Specifications:

- Protection (IP): IP44 according to EN 60 529
- Contact type: Mafelec (push button)
- Max amperage: 10 A
- Operating temperature: -25 °C up to 60 °C
- Material: ABS plastic with rubber buffer
- Cable: polyurethane 3,5 metres working length

Applications:

Tail lifts, winches, cranes to name a few

Available colours:

Orange, yellow, green, red and blue

Available in different colours and in 2- or 3-button configurations. Ask for your quantity discount. All models are equipped with Mafelec switches.

2-button hand controls with cable and connector

| Make | Colour | REF |
|---------------|--------|-----------|
| MBB Hubfix | Yellow | 111TP5196 |
| MBB Palfinger | Green | 111TP5225 |

3-button hand controls with cable and connector

| Make | Colour | REF |
|---------------|--------|-----------|
| MBB Palfinger | Green | 111TP5212 |

2-button hand controls without cable

| Colour | REF |
|--------|-----------|
| Orange | 111TP5214 |
| Blue | 111TP5215 |
| Red | 111TP5216 |
| Yellow | 111TP5217 |
| Green | 111TP5218 |

3-button hand controls without cable

| Colour | REF |
|--------|-----------|
| Orange | 111TP5219 |
| Blue | 111TP5220 |
| Yellow | 111TP5221 |
| Red | 111TP5222 |
| Green | 111TP5223 |

CONTROLLERS

COMMANDES - BEDIENUNGEN



- 2 x NO
- Mafelec switch

REF 111TP8092



- 1 x NO + 1 x NC
- Mafelec switch

REF 111TP8093

See chapter Universal parts on page 712 for more parts.

SWITCHES & CONTROLLERS - INTERRUPTEURS & COMMANDES - SCHALTER & BEDIENUNGEN

USED ON MBB PALFINGER/PALGATE/INTERLIFT



SWITCHES & CONTROLLERS – INTERRUPTEURS & COMMANDES – SCHALTER & BEDIENUNGEN

FOOT CONTROLLERS & PARTS

COMMANDES AU PIED & ACCESSOIRES – FUSSSCHALTER & ERSATZTEILE



Length: 2100 mm

REF 111TP3704



Length: 2100 mm

REF 111TP3705 – Lift
REF 111TP3706 – Lower



Length: 2000 mm

REF 111TP3707



Diameter: 79 x 35 mm

REF 111TP3708



Diameter: 79 mm

REF 111TP3709



Diameter: 30 mm

REF 111TP3710



Diameter: 30 mm

REF 111TP3711



Diameter: 40 mm

REF 111TP3713



Diameter: 40 mm

REF 111TP3714



Diameter: 40 mm

REF 111TP3712

USED ON MBB PALFINGER/PALGATE/INTERLIFT



VARIOUS CONTROLLER PARTS

DIVERSES PIÈCES DE COMMANDE - WEITERE BEDIENUNG-ERSATZTEILE



Diameter: 32 mm

REF 111TP3750

SWITCHES & CONTROLLERS - INTERRUPTEURS & COMMANDES - SCHALTER & BEDIENUNGEN

USED ON MBB PALFINGER/PALGATE/INTERLIFT



CABLES & CONNECTORS - CÂBLES & CONNECTEURS - KABEL & STECKER

KOSTAL CABLES

CÂBLES KOSTAL - KOSTALKABEL



- Length: 4000 mm
- Thread: M24 x 1 mm/M27 x 1 mm

REF 111TP3761



Length: 4050 mm

REF 111TP8496

CABLES & PARTS

CÂBLES DE BATTERIE - KABEL & ERSATZTEILE



Length: 3160 mm

REF 111TP8497

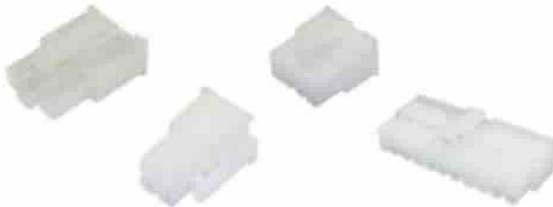


Length: 3660 mm

REF 111TP8498

CONNECTORS & PARTS

CONNECTEURS & ACCESSOIRES - STECKER & ERSATZTEILE



- REF 111TP8582** - 2-pole
- REF 111TP8583** - 4-pole
- REF 111TP3763** - 6-pole
- REF 111TP8584** - 8-pole
- REF 111TP8585** - 10-pole
- REF 111TP8586** - 12-pole
- REF 111TP8587** - 14-pole
- REF 111TP8588** - 16-pole



Wire size: 1,5 mm²

REF 111TP3764

See chapter Universal parts on page 719 for more parts.

USED ON MBB PALFINGER/PALGATE/INTERLIFT



FLASHER LIGHTS & PARTS

LAMPES TORCHES & ACCESSOIRES - BLINKLEUCHTEN & ERSATZTEILE



- Voltage: 12/24 V
- LED - EU

REF 111TP8500



- Voltage: 12/24 V
- LED - EU

REF 111TP3766



- Voltage: 12/24 V
- LED - type 2007

REF 111TP3765



Voltage: 12/24 V

REF 111TP8499

See chapter Universal parts on page 725 for more parts.

ELECTRICAL PARTS - PIÈCES ÉLECTRIQUES - ELEKTRISCHE ERSATZTEILE

USED ON MBB PALFINGER/PALGATE/INTERLIFT



ELECTRICAL PARTS - PIÈCES ÉLECTRIQUES - ELEKTRISCHE ERSATZTEILE

PRINTED CIRCUIT BOARDS/CONTROLLERS

CIRCUITS IMPRIMÉS/COMMANDES - LEITERPLATTEN/BEDIENUNGEN



- Length: 165 mm
- Width: 85 mm
- 1000 Athlet

REF 111TP3770 - Voltage: 12 V

REF 111TP3769 - Voltage: 24 V



- Length: 150 mm
- Width: 126 mm
- PREMIUM M.PROGR.E, KUZF-BDF

REF 111TP3771



- Length: 150 mm
- Width: 126 mm
- PLUS M.PROGR.A3, B13, B15, 2xB15

REF 111TP3772



- Length: 150 mm
- Width: 126 mm
- M. PROGR.B2, B13, B15 ODER 2xB15

REF 111TP8501



- Length: 150 mm
- Width: 126 mm
- ECO M.PROGR.M, B13, B16

REF 111TP3774



- Length: 150 mm
- Width: 126 mm
- KUZ M. EASY MOVE

REF 111TP8504



- Voltage: 12/24 V
- Length: 360 mm
- Width: 120 mm
- A3, B13-B15/2 x B15

REF 111TP3776



- Voltage: 12/24 V
- Length: 350 mm
- Width: 40 mm
- B1, KUZ, B13, B15

REF 111TP8502

USED ON MBB PALFINGER/PALGATE/INTERLIFT



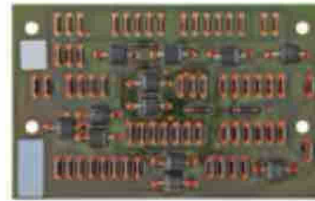
PRINTED CIRCUIT BOARDS/CONTROLLERS

CIRCUITS IMPRIMÉS/COMMANDES - LEITERPLATTEN/BEDIENUNGEN



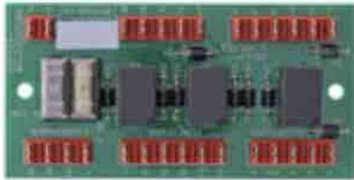
- Voltage: 24 V
- Length: 150 mm
- Width: 135 mm
- Height: 25 mm

REF 112TP5668



- Length: 135 mm
- Width: 85 mm

REF 111TP8503



- Voltage: 24 V
- Length: 140 mm
- Width: 70 mm

REF 111TP8505



- Length: 164 mm
- Width: 75 mm

REF 111TP8506 - Voltage: 12 V

REF 111TP8507 - Voltage: 24 V



- Voltage: 12 V
- Length: 142 mm
- Width: 71 mm

REF 111TP8508



Voltage: 12/24 V

REF 111TP8509

ELECTRICAL PARTS - PIÈCES ÉLECTRIQUES - ELEKTRISCHE ERSATZTEILE

USED ON MBB PALFINGER/PALGATE/INTERLIFT



ELECTRICAL PARTS - PIÈCES ÉLECTRIQUES - ELEKTRISCHE ERSATZTEILE

RELAYS

RELAIS - RELAIS



| Voltage | REF |
|---------|------------------|
| 24 | 111TP3777 |



| Info | REF |
|---------------------------------|------------------|
| Electronic card 24 V - 6-relays | 112TP8338 |



| Voltage | REF |
|---------|------------------|
| 24 | 111TP3778 |



| Voltage | REF |
|---------|------------------|
| 9/30 | 111TP3779 |



| Height mm | REF |
|--------------|------------------|
| 305 | 111TP3780 |

See chapter Universal parts on page 727 for more parts.

USED ON MBB PALFINGER/PALGATE/INTERLIFT



FUSES

FUSIBLES - SICHERUNGEN



DIN 72581/5

- REF 111TP3781** - Amperage: 100 A
- REF 111TP3782** - Amperage: 125 A
- REF 111TP3783** - Amperage: 150 A
- REF 111TP3784** - Amperage: 200 A



- REF 111TP3785** - Amperage: 100 A
- REF 111TP3786** - Amperage: 150 A
- REF 111TP3787** - Amperage: 200 A



REF 111TP8510 - Amperage: 80 A

See chapter Universal parts on page 728 for more parts.

FUSE HOLDERS & PARTS

PORTE-FUSIBLES & ACCESSOIRES - SICHERUNGSHALTER & ERSATZTEILE



- Amperage: 250 A
- DIN 43560/1

REF 111TP9376



- Diameter: 25 mm
- Thread: M8

REF 111TP3788



5 x 20 mm

REF 112TP3079

See chapter Universal parts on page 732 for more parts.

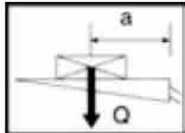
ELECTRICAL PARTS - PIÈCES ÉLECTRIQUES - ELEKTRISCHE ERSATZTEILE

USED ON MBB PALFINGER/PALGATE/INTERLIFT



VARIOUS PARTS – DIVERSES PIÈCES – VERSCHIEDENE ERSATZTEILE

DECALS AUTOCOLLANTS – AUFKLEBER

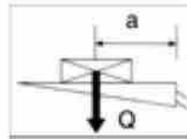


Q max. 750 Kg

| a (mm) | Q (Kg) |
|--------|--------|
| 600 | 750 |
| 700 | 650 |
| 820 | 550 |
| 1120 | 400 |
| 1800 | 250 |

- Length: 65 mm
- Width: 39 mm
- Max 750 kg

REF 111TP3790



Q max. 2500 Kg

| a (mm) | Q (Kg) |
|--------|--------|
| 750 | 2500 |
| 900 | 2050 |
| 1100 | 1700 |
| 1600 | 1150 |
| 2400 | 750 |

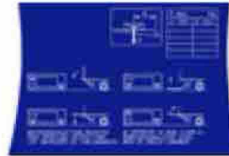
- Length: 65 mm
- Width: 39 mm
- Max 2500 kg

REF 111TP3791



- Length: 194 mm
- Width: 93,5 mm
- Athlet

REF 111TP3792



- Length: 180 mm
- Width: 120 mm

REF 111TP9778 – New model
REF 111TP3793 – Old model



- Length: 185 mm
- Width: 94 mm

REF 111TP8511

See chapter Universal parts on page 735 for more parts.