



USED ON
RATCLIFF

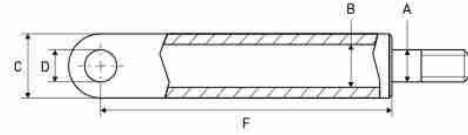
USED ON RATCLIFF



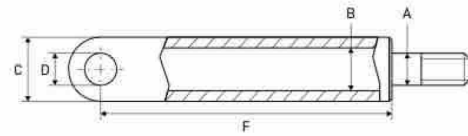
CYLINDERS – VÉRINS/CYLINDRES – ZYLINDER

LIFT CYLINDERS

VÉRINS DE LEVAGE – HUBZYLINDER



A mm	B mm	C mm	D mm	F mm	REF
28	35	45	20	825	111TP5126
28	35	45	20	736	111TP5127



A mm	B mm	C mm	D mm	F mm	REF
20	40	65	20	925	111TP7758
20	40	75	20	970	111TP7759

USED ON RATCLIFF



SEAL KITS

KITS DE JOINTS - DICHTUNGSSÄTZE



Diameter: 35/25 mm

REF 111TP7761



Diameter: 55/44 mm

REF 111TP7762



Diameter: 65/55 mm

REF 111TP7760

CYLINDER PARTS - PIÈCES DE CYLINDRE - ZYLINDER-ERSATZTEILE

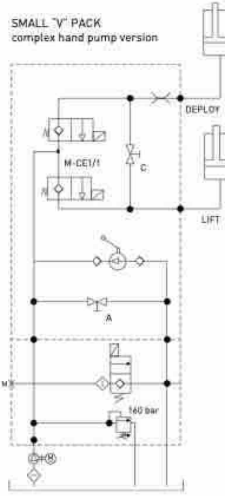
USED ON RATCLIFF



POWER PACKS & PARTS - GROUPE HYDRAULIQUE & ACCESSOIRES - AGGREGATE & ERSATZTEILE

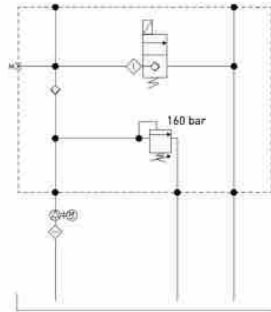
DC HYDRAULIC POWER UNITS

GROUPE HYDRAULIQUE DC - DC HYDRAULIKAGGREGAT



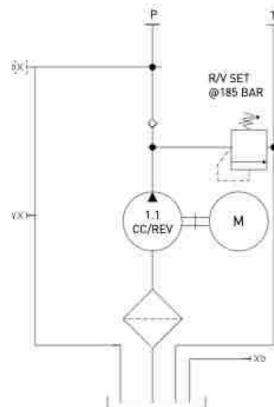
- Electric motor: 0,5 kW
- Pump size: 0,5 CC/rev
- Tank volume: ± 2,6 liter
- Working pressure: 160 bar

REF 111TP7763 - Voltage: 12 VDC
REF 111TP7768 - Voltage: 24 VDC



- Electric motor: 0,8 kW
- Voltage: 12 VDC
- Pump size: 0,5 CC/rev
- Tank volume: ± 2,6 liter
- Working pressure: 160 bar

REF 111TP7766



- Electric motor: 2,2 kW
- Voltage: 24 VDC
- Pump size: 1,1 CC/rev
- Tank volume: 4,3 liter
- Working pressure: 145 bar

REF 111TP7767

See chapter Universal parts on page 697 for more parts.

USED ON RATCLIFF



COVERS

COUVERCLES - ABDECKUNGEN



Length mm	Width mm	REF
335	285	111TP7769



Length mm	Width mm	REF
302	205	111TP7770



Length mm	Width mm	REF
300	288	111TP7771



Length mm	Width mm	REF
395	345	111TP7772



1



2

Fig	Length mm	Width mm	Info	REF
1	235	160	LH	111TP7773
2	235	160	RH	111TP7774



Length mm	Width mm	REF
967	75	111TP7775

POWER PACKS & PARTS - GROUPE HYDRAULIQUE & ACCESSOIRES - AGGREGATE & ERSATZTEILE

USED ON RATCLIFF



POWER PACKS & PARTS – GROUPE HYDRAULIQUE & ACCESSOIRES – AGGREGATE & ERSATZTEILE

LOCKS

SERRURES – VERRIEGELUNGEN



Clip kit

REF 111TP7776

VARIOUS PARTS

PIÈCES VARIÉES – VERSCHIEDENE TEILE



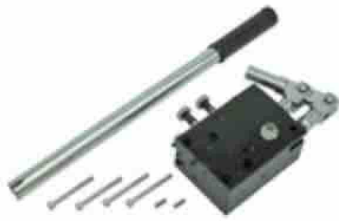
- Length: 105 mm
- Width: 35 mm

REF 111TP7777



- Length: 455 mm
- Diameter: 25 mm

REF 111TP7778



Hand pump

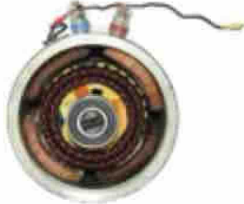
REF 111TP7779

USED ON RATCLIFF



ELECTRIC MOTORS

MOTEURS ÉLECTRIQUES - ELEKTROMOTORE N



Voltage	kW	Rotation	REF
12	1,6	CW >>	111TP3846



Voltage	kW	Rotation	REF
24	2,2	CW >>	111TP7780



Voltage	kW	Rotation	REF
12	0,8	CW >>	111TP3847
24	0,8	CW >>	111TP5356



Voltage	kW	Rotation	REF
12	1,6	CW >>	111TP3848



Voltage	kW	Rotation	REF
24	0,5	CW >>	111TP3849



Voltage	kW	Rotation	REF
12	1,4	CW >>	111TP8016
24	1,8	CW >>	111TP3850



Voltage	kW	Rotation	REF
12	0,8	CW >>	111TP7781
24	0,8	CW >>	111TP7782



Voltage	kW	Rotation	REF
12	2	CW >>	111TP7783
24	2	CW >>	111TP7784



Voltage	kW	Rotation	REF
12	0,5	<< CCW/CW >>	111TP2460
24	0,5	<< CCW/CW >>	111TP2462

See chapter Universal parts on page 735 for more parts.

MOTORS, PUMPS & PARTS - MOTEURS, POMPES & ACCESSOIRES - MOTOREN, PUMPEN & ERSATZTEILE

USED ON RATCLIFF



MOTORS, PUMPS & PARTS - MOTEURS, POMPES & ACCESSOIRES - MOTOREN, PUMPEN & ERSATZTEILE

SOLENOID SWITCHES/CONTACTORS

SOLÉNOÏDES/CONTACTEURS - MAGNETSCHALTER/SCHÜTZE

	Amperage	REF	
		12 V	24 V
	80	111TP7786	
	100	111TP7997	111TP7998
	100		111TP7785
	150	111TP3851	111TP3852
	150		111TP3874

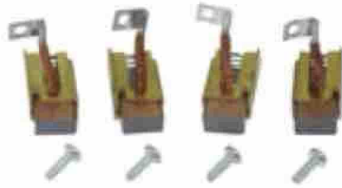
See chapter Universal parts on page 701 for more parts.

USED ON RATCLIFF



BRUSHES

BALAIS - KOHLEBÜRSTEN



Dimensions: 16 x 9 x 16 mm

REF 111TP3853



Dimensions: 13 x 9 x 25,5 mm

REF 111TP3854

BEARINGS

ROULEMENTS - LAGER



Diameter mm	Height mm	REF
12/32	10	111TP3855



Diameter mm	Height mm	REF
12/32	10	111TP3856
15/35	11	111TP3857



Diameter mm	Height mm	REF
15/42	13	111TP3863

See chapter Universal parts on page 735 for more parts.

MOTORS, PUMPS & PARTS - MOTEURS, POMPES & ACCESSOIRES - MOTOREN, PUMPEN & ERSATZTEILE

USED ON RATCLIFF



MOTORS, PUMPS & PARTS - MOTEURS, POMPES & ACCESSOIRES - MOTOREN, PUMPEN & ERSATZTEILE

ROLLERS

GALET DE GUIDAGE - LEITERROLLE



- Length: 33 mm
- Diameter: 40/16/10 mm

REF 111TP7789



Info: M10 x 1,5 x 40 mm

REF 111TP7790



Diameter: 54 mm

REF 111TP7839



Diameter: 35 mm

REF 111TP7791



Diameter: 106/45 mm

REF 111TP7787

USED ON RATCLIFF



HOSES

TUYAUX - SCHLÄUCHE



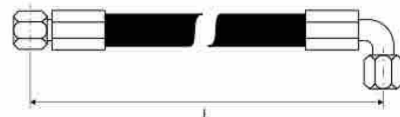
Hose dia		Length mm	Fitting 1 Inch	Fitting 2 Inch	Info	REF
Inch	mm					
1/4	6,4	650	9/16	9/16	-40-100 °C	111TP7793
1/4	6,4	5100	9/16	9/16	-40-100 °C	111TP7794



Hose dia		Length mm	Fitting 1 Inch	Fitting 2	Info	REF
Inch	mm					
1/4	6,4	2000	9/16	Nut 10L	-40-100 °C	111TP7800



Hose dia		Length mm	Fitting 1 Inch	Fitting 2 Inch	Info	REF
Inch	mm					
1/4	6,4	2000	9/16	Nut 10L - 90°	-40-100 °C	111TP7795



Hose dia		Length mm	Fitting 1 Inch	Fitting 2 Inch	Info	REF
Inch	mm					
1/4	6,4	2000	9/16	9/16 - 90°	-40-100 °C	111TP7798
1/4	6,4	2000	3/4	9/16 - 90°	-40-100 °C	111TP7799

HOSES & FITTINGS - TUYAUX & RACCORDS - SCHLÄUCHE & KUPPLUNGEN

USED ON RATCLIFF



HOSES & FITTINGS – TUYAUX & RACCORDS – SCHLÄUCHE & KUPPLUNGEN

HOSES

TUYAUX – SCHLÄUCHE



Hose dia		Length mm	Fitting 1 Inch	Fitting 2 Inch	Info	REF
Inch	mm					
1/4	6,4	2000	Nut 8L	Nut 8L – 90°	–40–100 °C	111TP7796
1/4	6,4	2100	Nut 8L	Nut 8L – 90°	–40–100 °C	111TP7797



Hose dia		Length mm	Fitting 1 Inch	Fitting 2 Inch	Info	REF
Inch	mm					
1/4	6,4	2100	9/16	9/16	–40–100 °C	111TP7801

USED ON RATCLIFF



FITTINGS

RACCORDS - KUPPLUNGEN



- Height: 7 mm
- Diameter: 13/10 mm

REF 111TP7802



- Height: 13
- Diameter: 17 mm
- Thread: 9/16" x 1 mm

REF 111TP7803



- Height: 20 mm
- Thread: 1/4" BSP

REF 111TP7806



- Height: 35 mm
- Thread: 9/16" x 1 mm

REF 111TP7805



- Height: 49 mm
- Diameter: 10 mm
- Thread: 9/16" x 1 mm

REF 111TP7804

HOSES & FITTINGS - TUYAUX & RACCORDS - SCHLÄUCHE & KUPPLUNGEN

USED ON RATCLIFF



COILS & VALVES - BOBINES & SOUPAPES - SPULEN & VENTILE

CARTRIDGES

CARTOUCHES - PATRONEN

	Type	Diameter mm	Length mm	Thread	REF
	2/2	13	76	SLW7/8	111TP7810

COILS

BOBINES - SPULEN

Voltage	A mm	B mm	C mm	REF
12	16	50	500	111TP3858
24	16	52	380	111TP3859

Voltage	A mm	B mm	C mm	REF
12	13	38	460	111TP7813
24	13	38	460	111TP7814

Voltage	A mm	B mm	REF
12	14	37,5	111TP7811
24	14	37,5	111TP7812

Voltage	A mm	B mm	REF
12	10	28	111TP8014
24	10	28	111TP7817

REGULATING VALVES

SOUPAPES DE RÉGULATION - REGELVENTILE

Length mm	Thread	Info	REF
46	3/8" BSP	3 l/min	111TP7818
60	3/8" BSP	8 l/min	111TP7819
60	3/8" BSP	10 l/min	111TP7820
60	3/8" BSP	16 l/min	111TP7821

USED ON RATCLIFF



MAGNET VALVES

ÉLECTROVANNES - MAGNETVENTILE



Voltage: 24 V

REF 111TP7808



Voltage: 24 V

REF 111TP7807



REF 111TP7815 - Voltage: 12 V
REF 111TP7816 - Voltage: 24 V



Voltage: 24 V

REF 111TP7809

COILS & VALVES - BOBINES & SOUPAPES - SPULEN & VENTILE

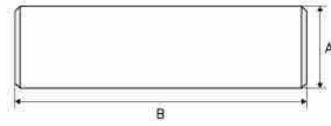
USED ON RATCLIFF



PINS, BUSHINGS & ROLLERS - AXES, BAGUES & GALETS - ACHSEN, BUCHSEN & ROLLEN

PINS

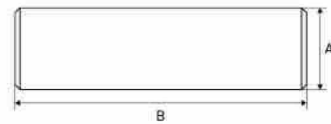
AXES - ACHSEN



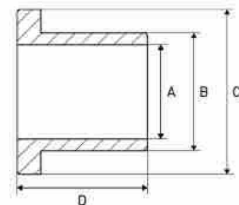
A mm	B mm	REF
20	42	111TP7824
20	47	111TP7825
20	51	111TP7826
20	71	111TP7827



A mm	B mm	REF
20	38	111TP7828
20	60	111TP7829
20	84	111TP7831



A mm	B mm	REF
30	56	111TP7834



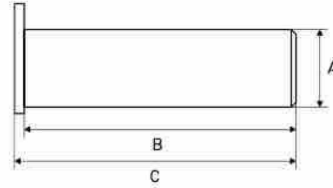
A mm	B mm	C mm	D mm	REF
16/12	24	22	24	111TP7792

USED ON RATCLIFF

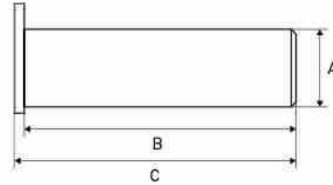


PINS

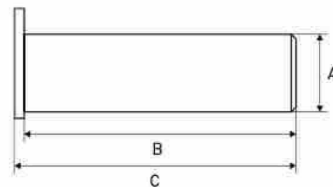
AXES - ACHSEN



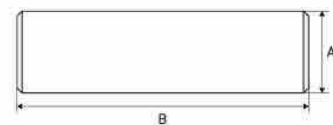
A mm	B mm	C mm	REF
20	59	67	111TP7822
20	69	76	111TP7823



A mm	B mm	C mm	REF
25	57	62	111TP7835



A mm	B mm	C mm	REF
20	56	66	111TP7832
30	56	66	111TP7833



A mm	B mm	REF
25	63	111TP7838

PINS, BUSHINGS & ROLLERS - AXES, BAGUES & GALETS - ACHSEN, BUCHSEN & ROLLEN

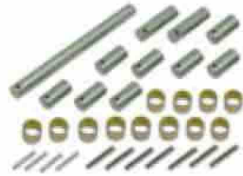
USED ON RATCLIFF



PINS, BUSHINGS & ROLLERS - AXES, BAGUES & GALETS - ACHSEN, BUCHSEN & ROLLEN

PIN SETS

KIT D'AXES - ACHSENSETS



- Pivot pin & bush kit
- Diameter: 20 mm

REF 111TP7836



- Length: 100 mm
- Diameter: 10 mm

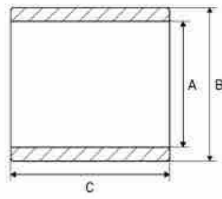
REF 111TP7837

USED ON RATCLIFF

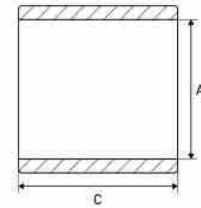


BUSHINGS

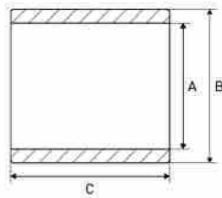
BAGUES - BUCHSEN



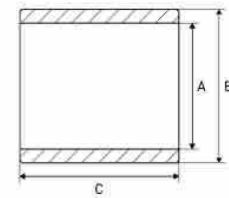
A mm	B mm	C mm	Info	REF
20	23	20	DX	111TP3860
25	28	25	DX	111TP3861
25	34	25	DX	111TP3862



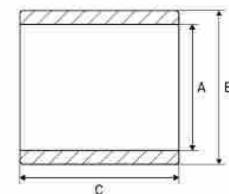
A mm	C mm	REF
8	8	111TP7841
10	10	111TP7840



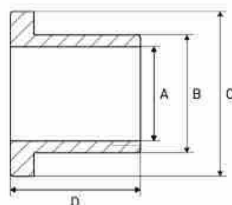
A mm	B mm	C mm	REF
15	12	15	111TP7842
15	14	15	111TP5288
20	14	20	111TP7843
20	18	20	111TP7844
25	18	25	111TP7845
10	23	10	111TP7846
15	23	15	111TP7847
20	23	20	111TP7848
25	23	25	111TP7849
15	28	15	111TP7850
25	28	25	111TP7851
20	34	20	111TP7852
25	34	25	111TP7853
30	34	30	111TP5291



A mm	B mm	C mm	REF
10	14	10	111TP7854



A mm	B mm	C mm	REF
10	12	10	111TP7855
42	34	42	20 111TP7856



A mm	B mm	C mm	D mm	REF
40	32	40	20	111TP7788

See chapter Universal parts on page 705 for more parts.

PINS, BUSHINGS & ROLLERS - AXES, BAGUES & GALETS - ACHSEN, BUCHSEN & ROLLEN

USED ON RATCLIFF



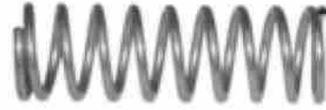
MECHANICAL PARTS – PIÈCES MÉCANIQUES – MECHANISCHE ERSTATZTEILE

SPRINGS & GAS SPRINGS

RESSORTS & VÉRINS À GAZ – FEDERN & GASDRUCKFEDERN



Diameter mm	Length mm	REF
7	45	111TP7867



Diameter mm	Length mm	REF
15	46	111TP7866



Diameter mm	Length mm	REF
19	100,5	111TP7868



Diameter mm	Length mm	REF
21	44	111TP7869



Diameter mm	Length mm	REF
16	14	111TP7870



Length mm	Thread	REF
977	M10	111TP7871



Length mm	Thread	REF
1077	M10	111TP7872



Length mm	Thread	REF
625	M10	111TP7866



Length mm	Thread	REF
195	M10	111TP7867

See chapter Universal parts on page 707 for more parts.

USED ON RATCLIFF



BUMPERS & BUFFERS

PARE-CHOCS & BUTOIRS - STOSSDÄMPFER & -PUFFER



- Length: 111 mm
- Width: 25 mm

REF 111TP7875



- REF 111TP7876** - Diameter: 20 mm - M6
- REF 111TP7877** - Diameter: 30 mm - M8

SLIDER BLOCKS, ROLLERS & WEAR PLATES

BLOCS DE DÉFILEMENT, GALETS & PLAQUES D'USURE - GLEITBLÖCKE, LAUFROLLEN & VERSCHLEISSPLATTEN



- Length: 100 mm
- Width: 50 mm

REF 111TP7878



- Length: 45,5 mm
- Width: 40,5 mm
- Hole: M16

REF 111TP7879



- Length: 750 mm
- Width: 48 mm

REF 111TP7880



- Length: 500 mm
- Width: 50 mm

REF 111TP7881

MECHANICAL PARTS - PIÈCES MÉCANIQUES - MECHANISCHE ERSTATZTEILE

USED ON RATCLIFF



MECHANICAL PARTS - PIÈCES MÉCANIQUES - MECHANISCHE ERSTATZTEILE

TORSION BARS + PARTS

BARRE DE TORSION + PIÈCES - DREHSTÄBE + ZUBEHÖR

Our torsion bars are made from a high grade spring steel 50CrV4. The square bars are tempered and get a shot-peening treatment on top of that. This gives the bars a very high fatigue strength and protects them against stress and cracking. Each bar is torsion tested through 90 degrees. The bars are sand blasted and get a black powder coat finish



Length mm	Colour	Info	REF
1860	White	7/16"	111TP7886
1860	Green	17/32"	111TP7888
1860	Black	9/16"	111TP7889
1860	Red	19/32"	111TP7890
1980	Blue	1/2"	111TP7887
1980	Black	5/8"	111TP7891



Info	REF
1/2"	111TP3864
17/32"	111TP3865
7/16"	111TP3866



Info	REF
1/2"	111TP3867
17/32"	111TP3868
7/16"	111TP3869



Length mm	Width mm	Info	REF
119	49	Hexagon	111TP7882



Length mm	Width mm	REF
118	48	111TP7883



Length mm	Width mm	REF
85	58	111TP7884



Info	REF
Small	111TP7892
Large	111TP7893



Length mm	Width mm	Height mm	REF
64,5	30	5	111TP7894

USED ON RATCLIFF



LSD PARTS (LOAD SAFETY DEVICES)

PIÈCES DE LSD (DISPOSITIFS DE SÉCURITÉ DE CHARGE) - LSD-TEILE (LADEN-SICHERHEITS-LICHTSCHRANKEN)



1



2

- Length: 109 mm
- Width: 38 mm
- Diameter: 8 mm

1. REF 111TP7896 - LH
2. REF 111TP7897 - RH



- Length: 109 mm
- Width: 38 mm
- Diameter: 8 mm
- RH

REF 111TP7898



- Length: 32 mm
- Thread: M6

REF 111TP7899



- Length: 875 mm
- Diameter: 12 mm

REF 111TP7900



- Length: 1288 mm
- Diameter: 12 mm

REF 111TP7901



- Length: 140 mm
- Width: 60 mm
- Height: 45,6 mm

REF 111TP7902



- Length: 121 mm
- Width: 58 mm

REF 111TP7903



- Length: 63 mm
- Width: 41 mm

REF 111TP7904

MECHANICAL PARTS - PIÈCES MÉCANIQUES - MECHANISCHE ERSTATZTEILE

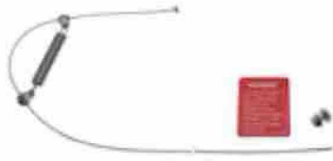
USED ON RATCLIFF



MECHANICAL PARTS – PIÈCES MÉCANIQUES – MECHANISCHE ERSTATZTEILE

WIRE ROPES

CÂBLES MÉTALLIQUES – DRAHTSEILE



With special locking nut (not standard)

Diameter mm	Length mm	REF
2	1570	111TP7905



Diameter mm	Length mm	REF
8	4000	111TP7906
8	4500	111TP7907
8	6000	111TP7908
8	6500	111TP7909
8	7000	111TP7910
8	7500	111TP7911



Diameter mm	Length mm	REF
8	7000	111TP7912

PULLEYS

POULIES – RIEMENSCHNITTEN



Diameter mm	REF
94,5	111TP7913
119	111TP7914
125	111TP7915
178	111TP7916



Diameter mm	Weight kg	REF
80	1000	111TP7917
121	1000	111TP7918
80	1500	111TP7919
121	1500	111TP7920

CAPS

BOUCHONS – DECKEL



- Diameter outer: 100 mm
- Diameter inner: 83 mm
- Height: 34,4 mm

REF 111TP7921

See chapter Universal parts on page 707 for more parts.

USED ON RATCLIFF



PLATFORM PARTS

PIÈCES DE PLATEFORME – PLATTFORMERSATZTEILE



REF 111TP7922 – Length: 31 mm – small
REF 111TP7923 – Length: 35 mm – big



Diameter: 25 mm

REF 111TP7924 – Length: 29,5 mm



Diameter: 6 mm

REF 111TP7925 – Length: 33 mm
REF 111TP7926 – Length: 39 mm
REF 111TP7927 – Length: 40 mm



REF 111TP7928 – 1500 kg – LH
REF 111TP7929 – 1500 kg – RH



REF 111TP7930 – 1000 kg – LH
REF 111TP7931 – 1000 kg – RH
REF 111TP7932 – 1500 kg – LH
REF 111TP7933 – 1500 kg – RH



Anti-corrosion chain

REF 111TP7934 – 1000 kg – P/MTR – 5/8" – 3 x 4000 mm
REF 111TP7935 – 1000 kg – GM – 5/8" – 3 x 4000 mm
REF 111TP7936 – 1500 kg – P/MTR – 5/8" – 4 x 6000 mm
REF 111TP7937 – 1500 kg – GM – 5/8" – 4 x 6000 mm



REF 111TP7938 – P/MTR – DIN: 1/2" – single
REF 111TP7939 – P/MTR – ANSI: 5/8" – single
REF 111TP7940 – 6,40 m – ANSI: 5/8" – single



· Anti-corrosion chain
 · ANSI: 5/8"

REF 111TP7941

MECHANICAL PARTS – PIÈCES MÉCANIQUES – MECHANISCHE ERSTATZTEILE

USED ON RATCLIFF



MECHANICAL PARTS – PIÈCES MÉCANIQUES – MECHANISCHE ERSTATZTEILE

PLATFORM PARTS

PIÈCES DE PLATEFORME – PLATTFORMERSATZTEILE



ANSI: 5/8"

REF 111TP7942



Diameter: 4,5 mm

REF 111TP7943



Chain anchor kit

REF 111TP7944



- Length: 125 mm
- Thread: M12

REF 111TP7945



Length: 181 mm

1. **REF 111TP7947** - LH
2. **REF 111TP7946** - RH



- Diameter: 13/18/25 mm
- Length: 70 mm
- Width: 30 mm
- Height: 20 mm

REF 111TP7948



- Diameter: 10 mm
- Length: 170 mm

REF 111TP7949



- Diameter: 10 mm
- Length: 170 mm

REF 111TP7950

USED ON RATCLIFF



PLATFORM PARTS

PIÈCES DE PLATEFORME – PLATTFORMERSATZTEILE



- Length: 67 mm
- Width: 67 mm

REF 111TP7951



1



2

- Length: 80 mm
- Width: 80 mm

1. **REF 111TP7953** – LH
2. **REF 111TP7952** – RH



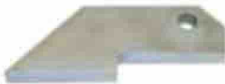
- Length: 80 mm
- Width: 80 mm

REF 111TP7965 – (kit REF 111TP7953 + 111TP7879) LH
REF 111TP8033 – (kit REF 111TP7952 + 111TP7879) RH



Handle

REF 111TP7955



- Length: 115 mm
- Width: 40 mm
- Diameter hole: 10 mm

REF 111TP7956



- Length: 117 mm
- Width: 37 mm
- LH/RH

REF 111TP7954



- Length: 117 mm
- Width: 37 mm

REF 111TP7957



- Length: 96,5 mm
- Thread: 56,5 mm
- Thread: M8

REF 111TP7958

MECHANICAL PARTS – PIÈCES MÉCANIQUES – MECHANISCHE ERSTATZTEILE

USED ON RATCLIFF



MECHANICAL PARTS – PIÈCES MÉCANIQUES – MECHANISCHE ERSTATZTEILE

PLATFORM PARTS

PIÈCES DE PLATEFORME – PLATTFORMERSATZTEILE



- Diameter: 10 mm
- Length: 121 mm

REF 111TP7967



Complete kit

REF 111TP7959



- Length: 120 mm
- Width: 69 mm

REF 111TP7960



- Length: 300 mm
- Width: 51 mm

REF 111TP7961



- Length: 126 mm
- Width: 100 mm

REF 111TP7962



- Length: 67 mm
- Width: 67 mm

REF 111TP7963



- Length: 73 mm
- Diameter: 6 mm

REF 111TP7964



- Length: 110 mm
- Width: 55 mm

REF 111TP7966

USED ON RATCLIFF



PLATFORM PARTS

PIÈCES DE PLATEFORME – PLATTFORMERSATZTEILE



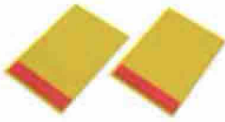
- Length: 400 mm
- Width: 250
- § 53b Abs. 5 StVZO
- TÜV/CE with certificate

REF 111TP3870



- Length: 400 mm
- Width: 250 mm
- § 53b Abs. 5 StVZO
- TÜV/CE with certificate

REF 111TP1320



- Length: 300 mm
- Width: 200 mm

REF 111TP7970

See chapter Universal parts on page 708 for more parts.

MECHANICAL PARTS – PIÈCES MÉCANIQUES – MECHANISCHE ERSTATZTEILE

USED ON RATCLIFF



SWITCHES & CONTROLLERS – INTERRUPTEURS & COMMANDES – SCHALTER & BEDIENUNGEN

ROTARY/PUSH SWITCHES & PARTS

INTERRUPTEURS ROTATIFS/POUSSOIRS & ACCESSOIRES – DREH-/DRUCKSCHALTER & ERSATZTEILE



24 V LED rocker switch kit

REF 111TP7989

CONTACT ELEMENTS

BLOCS DE CONTACT – KONTAKTELEMENTE



1 x NO

REF 111TP7975



1 x NC

REF 111TP8017



1 x NO

REF 111TP7976



1 x NC

REF 111TP7977

USED ON RATCLIFF



MAIN/EMERGENCY SWITCHES & PARTS

COMMUTATEURS DE MAIN/URGENCE & PIÈCES – MAIN/NOTFALL-SCHALTER & TEILE

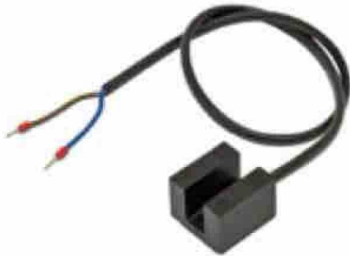


- Amperage: 100/500 A (5 sec)
- 1-pole (2 connections)
- M10

REF 111TP7978

TILT SWITCHES & SENSORS

CAPTEURS & INTERRUPTEURS – SENSOREN & SCHALTER



- Dashboard knob
- Length: 560 mm

REF 111TP7988

SWITCHES & CONTROLLERS – INTERRUPTEURS & COMMANDES – SCHALTER & BEDIENUNGEN

USED ON RATCLIFF



SWITCHES & CONTROLLERS – INTERRUPTEURS & COMMANDES – SCHALTER & BEDIENUNGEN

CONTROL BOXES & PARTS

BOÎTIERS DE CONTRÔLE & ACCESSOIRES – BEDIENKÄSTEN & ERSATZTEILE



2-button

REF 111TP7979



3-button

REF 111TP7985



2-button

REF 111TP7983



3-button

REF 111TP7984



2 x NO – 1 x NC

REF 111TP7980



2 x NO – 1 x NC/1 x NO – 2 x NO

REF 111TP7987



Black button down

REF 111TP7982



White button up

REF 111TP7981



2-position switch

REF 111TP7986

USED ON RATCLIFF



CONTROLLERS

COMMANDES - BEDIENUNGEN



3 x NO - 1 x NC

REF 111TP7972



3-button with changeover switch

REF 111TP7973 - 1 x NO +
1 x NO -
1 x NO +
1 x NC -
Mafelec

REF 111TP7974 - 1 x NO +
1 x NC -
2 x NO +
2 x NO

See chapter Universal parts on page 712 for more parts.

SWITCHES & CONTROLLERS - INTERRUPTEURS & COMMANDES - SCHALTER & BEDIENUNGEN

USED ON RATCLIFF



CABLES & CONNECTORS – CÂBLES & CONNECTEURS – KABEL & STECKER

SPIRAL CABLES

CÂBLES SPIRALÉS – SPIRALKABEL



Length mm	Wire size mm ²	REF
1070	3 x 1	111TP7993

See chapter Universal parts on page 718 for more parts.

CONNECTORS & PARTS

CONNECTEURS & ACCESSOIRES – STECKER & ERSATZTEILE



- 7-pole
- DIN 72577
- ISO 1724

REF 111TP939



- 7-pole
- DIN 72577
- ISO 1724

REF 111TP947



- Wire size: 35 mm²
- Amperage: 160 A
- SBE160

REF 111TP4588



- Length: 85 mm
- Width: 84 mm
- Height: 53 mm

REF 111TP7990

See chapter Universal parts on page 719 for more parts.

USED ON RATCLIFF



FUSES

FUSIBLES - SICHERUNGEN



Mega

Amperage	Colour	REF
100	Black	111TP4729
125	Black	111TP4730
150	White	111TP4731
175	White	111TP4732
200	Blue	111TP4733
225	Beige	111TP4734
250	Black	111TP4735

See chapter Universal parts on page 728 for more parts.

FUSE HOLDERS & PARTS

PORTE-FUSIBLES & ACCESSOIRES - SICHERUNGSHALTER & ERSATZTEILE



Amperage: 200 A

REF [111TP8001](#)



· Length: 32 mm
· Width: 6,3 mm

REF [111TP8002](#)

See chapter Universal parts on page 732 for more parts.

THYRISTORS & DIODES

THYRISTORS & DIODES - THYRISTOREN & DIODEN



6 CC

REF [111TP8004](#)

PLASTIC ENERGY CHAIN

CHAÎNE ENERGÉTIQUE EN PLASTIQUE - KUNSTSTOFF ENERGIEKETTE



Length: 1900 mm

REF [111TP7996](#)

ELECTRICAL PARTS - PIÈCES ÉLECTRIQUES - ELEKTRISCHE ERSATZTEILE

USED ON RATCLIFF



VARIOUS PARTS – DIVERSES PIÉCES – VERSCHIEDENE ERSATZTEILE

DECALS

AUTOCOLLANTS – AUFKLEBER



REF **111TP8011** – 200 kg
 REF **111TP8007** – 300 kg
 REF **111TP8008** – 500 kg
 REF **111TP8009** – 1000 kg
 REF **111TP8010** – 1500 kg



REF **111TP8012** – 350 kg

TAKE CARE WHEN OPENING PLATFORM
 Read Safety Instructions Before Operating Lift

Dimensions: 109 x 29,5 mm

REF **111TP8013**

See chapter Universal parts on page 735 for more parts.