



USED ON
SÖRENSEN

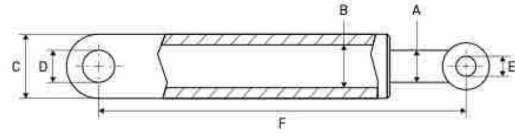
USED ON SÖRENSEN



CYLINDERS – VÉRINS/CYLINDRES – ZYLINDER

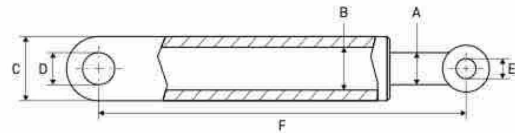
LIFT CYLINDERS

VÉRINS DE LEVAGE – HUBZYLINDER



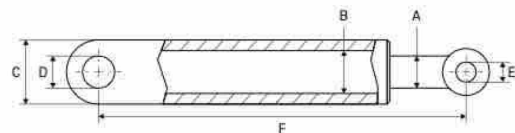
SX1-750/751

A mm	B mm	C mm	D mm	E mm	F mm	REF	
						Cylinder	Seal kit
60	70	80	30	30	460	111TP3876	111TP9353



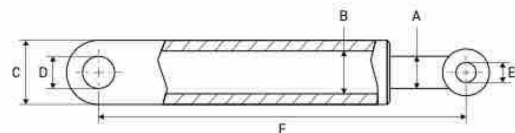
X1-1000

A mm	B mm	C mm	D mm	E mm	F mm	REF	
						Cylinder	Seal kit
63	70	80	35	35	518	111TP3878	111TP3891



X1-1000

A mm	B mm	C mm	D mm	E mm	F mm	REF	
						Cylinder	Seal kit
70	80	90	35	30	522	111TP3877	111TP9354



X1-1501

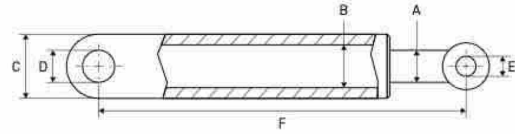
A mm	B mm	C mm	D mm	E mm	F mm	REF	
						Cylinder	Seal kit
80	90	100	40	40	512	111TP8512	111TP9355

USED ON SÖRENSEN



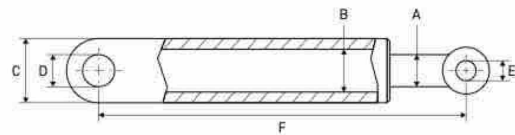
TILT CYLINDERS

VÉRIN D'INCLINAISON - SCHLISSZYLINDER



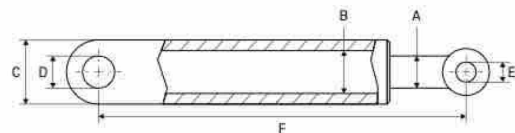
X1-750

A mm	B mm	C mm	D mm	E mm	F mm	REF	
						Cylinder	Seal kit
40	67	80	30	M30	635	111TP8514	111TP9358



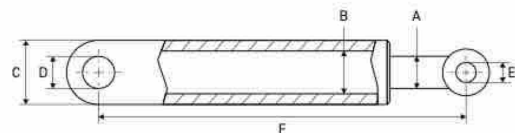
SX1-1001

A mm	B mm	C mm	D mm	E mm	F mm	REF	
						Cylinder	Seal kit
45	80	90	35	35	640	111TP3879	111TP1557



X1-1000

A mm	B mm	C mm	D mm	E mm	F mm	REF	
						Cylinder	Seal kit
45	70	80	35	35	640	111TP3880	111TP9356



X1-1500

A mm	B mm	C mm	D mm	E mm	F mm	REF	
						Cylinder	Seal kit
45	80	90	35	35	640	111TP3881	111TP9357

CYLINDERS - VÉRINS/CYLINDRES - ZYLINDER

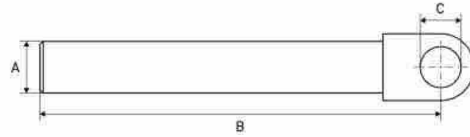
USED ON SÖRENSEN



CYLINDER PARTS - PIÈCES DE CYLINDRE - ZYLINDER-ERSATZTEILE

PISTON RODS

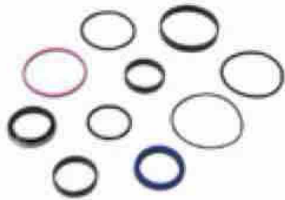
TIGES DE PISTON - KOLBENSTANGEN



A mm	B mm	C mm	Info	REF
63	418	35	Used on cylinder REF 111TP3878	111TP3882
70	440	30	Used on cylinder REF 111TP3877	111TP3883

SEAL KITS

KITS DE JOINTS - DICHTUNGSSÄTZE



Diameter: 40/70 mm

REF 111TP3884



Diameter: 40/70 mm

REF 111TP3885



Diameter: 45/70 mm

REF 111TP3886



Diameter: 45/80 mm

REF 111TP3887



Diameter: 50/60 mm

REF 111TP3888



Diameter: 60/70 mm

REF 111TP3889

USED ON SÖRENSEN



SEAL KITS

KITS DE JOINTS – DICHTUNGSSÄTZE



Diameter: 63/73 mm

REF 111TP3890



Diameter: 63/75 mm

REF 111TP3891



Diameter: 70/80 mm

REF 111TP3892



Diameter: 70/80 mm

REF 111TP3893



Diameter: 80/45 mm

REF 111TP3894



Diameter: 55/90 mm

REF 111TP9925



Diameter: 45/90 mm

REF 112TP5912



Diameter: 40/70 mm

REF 112TP9427

CYLINDER PARTS – PIÈCES DE CYLINDRE – ZYLINDER-ERSATZTEILE

USED ON SÖRENSEN



SEALS & RINGS – JOINTS & RONDELLES – DICHTUNGEN & RINGE

O-RINGS

JOINTS TORIQUES – O-RINGE



Diameter mm	REF
40,64 x 5,33	111TP3895
47 x 5,33	111TP3896



Diameter mm	REF
77,5 x 2,62	111TP8515

See chapter Universal parts on page 694 for more parts.

CU-SEALS

JOINTS CU – CU-DICHTUNGEN



Diameter mm	For thread	REF
14,7 x 22 x 1,5	M14	111TP3898
16,7 x 24 x 1,5	M16	111TP3899
18,7 x 26 x 1,5	M19	111TP3900

See chapter Universal parts on page 695 for more parts.

USED ON SÖRENSEN



COVERS

COUVERCLES - ABDECKUNGEN



Length mm	Height mm	Width mm	kW	REF
290	275	255	3	111TP3901



Length mm	Height mm	Width mm	REF
315	140	255	111TP3902



Length mm	Height mm	Width mm	Info	REF
210	170	160	X1-1000	111TP3903



Info	REF
X1-FAX1000	112TP8991



Length mm	Height mm	Width mm	REF
290	255	265	112TP4776

POWER PACKS & PARTS - GROUPE HYDRAULIQUE & ACCESSOIRES - AGGREGATE & ERSATZTEILE

USED ON SÖRENSEN



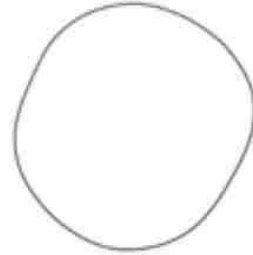
POWER PACKS & PARTS – GROUPE HYDRAULIQUE & ACCESSOIRES – AGGREGATE & ERSATZTEILE

TANKS & OIL RESERVOIRS

RÉSERVOIRS (D'HUILE) – TANKS & ÖLBEHÄLTER



Length mm	Height mm	Width mm	REF
245	150	150	111TP3904



Diameter mm	REF
247 x 2	111TP3897



Length mm	Height mm	Width mm	Diameter mm	Info	REF
200	175	165	188	X1A	111TP3905



Length mm	Diameter mm	REF
212	82	111TP9926



Info	REF
FAS 1000	112TP8629



Info	REF
Oil level stick with pipeline	111TP8517

USED ON SÖRENSEN



FILTERS & BREATHERS

FILTRES & RENIFLARDS - FILTER & ENTLÜFTER



- Diameter: 63 mm
- 104 µ

REF 111TP8518



Diameter: 66,5 mm

REF 111TP8519

DRAIN PLUGS

BOUCHONS DE VIDANGE - ABLASSSCHRAUBEN



Thread: 3/8"

REF 111TP3906

POWER PACKS & PARTS - GROUPE HYDRAULIQUE & ACCESSOIRES - AGGREGATE & ERSATZTEILE

USED ON SÖRENSEN



MOTORS, PUMPS & PARTS - MOTEURS, POMPES & ACCESSOIRES - MOTOREN, PUMPEN & ERSATZTEILE

ELECTRIC MOTORS

MOTEURS ÉLECTRIQUES - ELEKTROMOTOREN



Voltage	kW	Rotation	REF
12	0,8	<< CCW	111TP3907
24	1,2	<< CCW	111TP3908



Voltage	kW	Rotation	REF
12	2,0	<< CCW	111TP3909
24	2,0	<< CCW	111TP3910



Voltage	kW	Rotation	REF
24	2,0	<< CCW	111TP3911



Voltage	kW	Rotation	REF
24	2,0	<< CCW	111TP8521



Voltage	kW	Rotation	REF
24	2,0	<< CCW	111TP8522



Voltage	kW	Rotation	REF
24	2,1	<< CCW	111TP8523



Voltage	kW	Rotation	REF
24	2	CW >>	111TP8524



Voltage	kW	Rotation	REF
24	1,8	<< CCW	111TP8525

See chapter Universal parts on page 735 for more parts.

USED ON SÖRENSEN



HYDRAULIC PUMPS

POMPES HYDRAULIQUES – HYDRAULIKPUMPEN



CC	Rotation	REF
0,8	CW >>	111TP3912



CC	Rotation	Info	REF
1	CW >>		111TP3913
1,2	CW >>		111TP3914
2	CW >>		111TP3915
1,7	CW >>	HYDEM version	111TP9927



CC	Rotation	REF
1,25	CW >>	111TP9211
2,5	CW >>	112TP4094

See chapter Universal parts on page 699 for more parts.

MOTORS, PUMPS & PARTS – MOTEURS, POMPES & ACCESSOIRES – MOTOREN, PUMPEN & ERSATZTEILE



USED ON SÖRENSEN



MOTORS, PUMPS & PARTS – MOTEURS, POMPES & ACCESSOIRES – MOTOREN, PUMPEN & ERSATZTEILE

SOLENOID SWITCHES/CONTACTORS

SOLÉNOÏDES/CONTACTEURS – MAGNETSCHALTER/SCHÜTZE

	Amperage	REF	
		12 V	24 V
	80		111TP2063
	100	111TP3916	111TP3917
	200	111TP3919	111TP3920
	150		111TP3918

See chapter Universal parts on page 701 for more parts.

COUPLERS

COUPLEURS – KUPPLUNGEN



Diameter mm	Height mm	REF
18	14,5	111TP9928

See chapter Universal parts on page 702 for more parts.

USED ON SÖRENSEN



BRUSHES

BALAIS - KOHLEBÜRSTEN



Dimensions: 12,8 x 7,3 x 19,2 mm

REF 111TP5051 - Voltage: 12 V

REF 111TP3921 - Voltage: 24 V

GUMMY ELEMENT

ÉLÉMENT CAOUTCHOUC - GUMMIELEMENTE



- Diameter: 80/94 mm
- Height: 40 mm

REF 111TP3922

MOTORS, PUMPS & PARTS - MOTEURS, POMPES & ACCESSOIRES - MOTOREN, PUMPEN & ERSATZTEILE

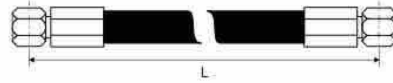
USED ON SÖRENSEN



HOSES & FITTINGS - TUYAUX & RACCORDS - SCHLÄUCHE & KUPPLUNGEN

HOSES

TUYAUX - SCHLÄUCHE



Hose diameter		Length mm	Fitting 1 mm	Fitting 2 mm	Info	REF
Inch	mm					
3/8	9,5	450	M18 x 1,5	M18 x 1,5	-40-100 °C	111TP8526
3/8	9,5	750	M18 x 1,5	M18 x 1,5	-40-100 °C	111TP3923
3/8	9,5	800	M18 x 1,5	M18 x 1,5	-40-100 °C	111TP3924
3/8	9,5	900	M18 x 1,5	M18 x 1,5	-40-100 °C	111TP3925
3/8	9,5	2000	M18 x 1,5	M18 x 1,5	-40-100 °C	111TP3926



Hose diameter		Length mm	Fitting 1 mm	Fitting 2 mm	Info	REF
Inch	mm					
1/4	6,4	450	M18 x 1,5	M18 x 1,5	-40-100 °C	111TP8354
3/8	9,5	2000	M18 x 1,5	M18 x 1,5	-40-100 °C	111TP3927
5/16	7,9	2150	ETM 12	ETM 12	-40-100 °C	11231716
1/4	6,4	1280			-40-100 °C	11231206
3/8	9,5	2000			-40-100 °C	1123119

USED ON SÖRENSEN





SOLENOID VALVES

ÉLECTROVANNES - MAGNETVENTILE

	Type	Diameter nose mm	Thread	REF	
				12 V	24 V
	4/2	13,8	M20 x 1,5	111TP3928	111TP3929
	2/2	15	M20 x 1,5	111TP3930	111TP3931
	4/2	14	M20 x 1,5	111TP9929	111TP9929
	3/4	12,7		112TP9303	

CARTRIDGES

CARTOUCHES - PATRONEN

	Type	Diameter nose mm	Thread	REF
	4/2	13,8-15,3-16,9	M20 x 1,5	111TP8464
	2/2	15	M20 x 1,5	111TP8463

COILS & VALVES - BOBINES & SOUPAPES - SPULEN & VENTILE

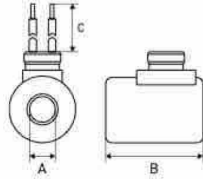
USED ON SÖRENSEN



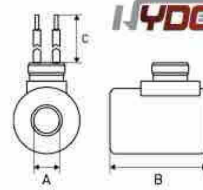
COILS & VALVES – BOBINES & SOUPAPES – SPULEN & VENTILE

COILS

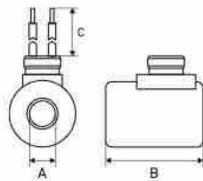
BOBINES – SPULEN



Voltage	A mm	B mm	C mm	REF
12	18	40	3000	111TP3932
24	18	40	3000	111TP3933



Voltage	A mm	B mm	C mm	Info	REF
12	18	40	4000	Removable cable	111TP8527
24	18	40	4000	Removable cable	111TP8528



Voltage	A mm	B mm	C mm	REF
12	18	40	420	111TP3934
24	18	40	420	111TP3935

VALVE BLOCKS

BOÎTIERS À SOUPAPES – VENTILBLÖCKE



- Length: 90 mm
- Width: 90 mm

1. REF **111TP8520** – X1-750
2. REF **111TP8529** – X1-1000



- Length: 186 mm
- Width: 49 mm

REF **111TP8530**

VALVES & SWITCHES

SOUPAPES & INTERRUPTEURS – VENTILE & SCHALTER



- Length: 3000 mm
- Thread: M10 x 1 mm
- X1A – SX1

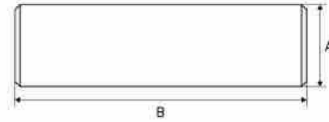
REF **111TP3936**

USED ON SÖRENSEN

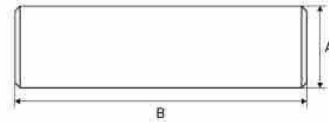


PINS

AXES - ACHSEN



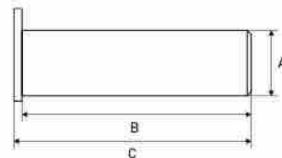
A mm	B mm	REF
30	100	111TP3937
35	117	111TP3938



A mm	B mm	REF
30	95	112TP8590
30	115	112TP5872
30	125	111TP3939



A mm	B mm	REF
35	135	111TP3940



A mm	B mm	REF
30	165	111TP3941
35	125	111TP3942
35	130	111TP3943
35	185	111TP3944

PINS, BUSHINGS & ROLLERS - AXES, BAGUES & GALETS - ACHSEN, BUCHSEN & ROLLEN

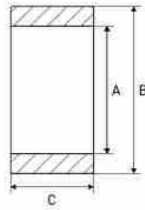
USED ON SÖRENSEN



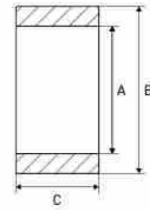
PINS, BUSHINGS & ROLLERS - AXES, BAGUES & GALETS - ACHSEN, BUCHSEN & ROLLEN

PLATFORM ROLLERS

GALETS DE HAYON - PLATTFORMROLLEN



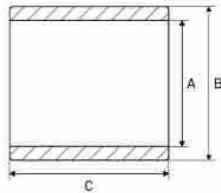
A mm	B mm	C mm	REF
30	80	45	111TP3945
45	80	46	111TP3946



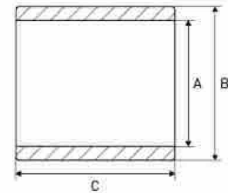
A mm	B mm	C mm	REF
20	78	25/28	111TP3947

BUSHINGS

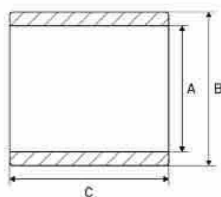
BAGUES - BUCHSEN



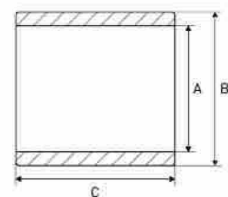
A mm	B mm	C mm	REF
30	35	40	111TP3948
30	35	50	111TP3949
30	35	65	111TP3950
35	40	40	111TP3951
35	40	50	111TP3952
35	40	65	111TP3953



A mm	B mm	c mm	REF
41,5	40	19	112TP5817



A mm	B mm	C mm	REF
35	40	65	112TP5817
40	45	80	111TP3954
41,5	30	30	112TP4846



A mm	B mm	C mm	REF
16	20	32	111TP3955

See chapter Universal parts on page 705 for more parts.

USED ON SÖRENSEN



SPRINGS & GAS SPRINGS

RESSORTS & VÉRINS À GAZ - FEDERN & GASDRUCKFEDERN



Diameter mm	Dimensions mm	REF
4	64 x 132	111TP3957

See chapter Universal parts on page 707 for more parts.

CAPS

BOUCHONS - DECKEL



Diameter: 114,3 mm

REF **111TP3958**



Diameter: 83 mm

REF **111TP3959**



REF **112TP3951**

See chapter Universal parts on page 707 for more parts.

PLATFORM PARTS

PIÈCES DE PLATEFORME - PLATTFORMERSATZTEILE



- Dimensions: 250 x 400 mm
- § 53b Abs, 5 StVZO
- TÜV/CE with certificate

REF **111TP3960**



- Dimensions: 250 x 400 mm
- § 53b Abs, 5 StVZO
- TÜV/CE with certificate

REF **111TP1320**

See chapter Universal parts on page 708 for more parts.

MECHANICAL PARTS - PIÈCES MÉCANIQUES - MECHANISCHE ERSTATZTEILE

USED ON SÖRENSEN



SWITCHES & CONTROLLERS – INTERRUPTEURS & COMMANDES – SCHALTER & BEDIENUNGEN

ROTARY/PUSH SWITCHES & PARTS

INTERRUPTEURS ROTATIFS/POUSSOIRS & ACCESSOIRES – DREH-/DRUCKSCHALTER & ERSATZTEILE



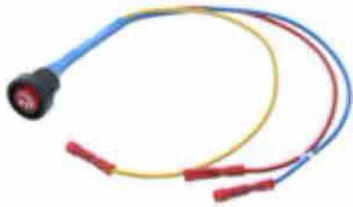
Voltage: 12 V

REF 111TP8168



- Voltage: 24 V
- S4/SX1

REF 111TP5018



Length: 325 mm

REF 111TP8532

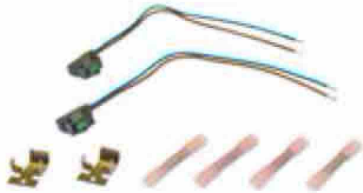


Dimensions: 35 x 22 mm

REF 111TP8533

LIMIT/MICRO SWITCHES

INTERRUPTEURS DE FIN DE COURSE/MICROINTERRUPTEURS – END-/MIKROSCHALTER



REF 111TP3969

See chapter Universal parts on page 711 for more parts.

USED ON SÖRENSEN



MICROSWITCHES WITH CABLE

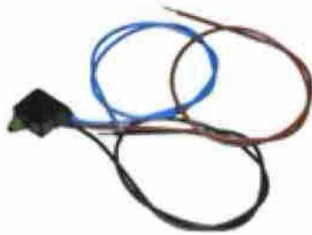
MICRORUPTEURS AVEC CÂBLE - MIKROSCHALTER MIT KABEL



Voltage	Amperage	Length mm	IP	REF
250	5	500	66	111TP8544



Voltage	Amperage	Length mm	IP	REF
250	5	1500	66	111TP3974



Voltage	Amperage	Length mm	REF
250	5	300	111TP3975

SWITCHES & CONTROLLERS - INTERRUPTEURS & COMMANDES - SCHALTER & BEDIENUNGEN

USED ON SÖRENSEN



SWITCHES & CONTROLLERS - INTERRUPTEURS & COMMANDES - SCHALTER & BEDIENUNGEN

SENSORS & SWITCHES

CAPTEURS & INTERRUPTEURS - SENSOREN & SCHALTER



- Height: 4100 mm
- X1

REF 111TP3973



X1 - 1000

REF 111TP8543



4-wire tilt sensor

REF 112TP8536



- Inclination sensor tray
- 4-wire harness
- X1A0750 - X1A750

REF 112TP8591



- 5-wire platform sensor
- X1A750-X1A750

REF 112TP6224

USED ON SÖRENSEN



CONTROL BOXES & PARTS

BOÎTIERS DE CONTRÔLE & ACCESSOIRES - BEDIENKÄSTEN & ERSATZTEILE



Voltage: 12/24 V

REF 111TP3970



X1A serie - 6

REF 111TP3971 - Voltage: 12 V

REF 111TP3972 - Voltage: 24 V



X1A serie - 7

REF 111TP9930 - Voltage: 12 V

REF 111TP9931 - Voltage: 24 V



With key

REF 111TP8534 - Voltage: 12 V

REF 111TP8535 - Voltage: 24 V



Voltage: 12/24 V

REF 111TP8536



Voltage: 12/24 V

REF 111TP8537



- Voltage: 12/24 V
- With key

REF 111TP8538



- With key
- X1 Serie - 10

REF 111TP8539

SWITCHES & CONTROLLERS - INTERRUPTEURS & COMMANDES - SCHALTER & BEDIENUNGEN

USED ON SÖRENSEN



SWITCHES & CONTROLLERS – INTERRUPTEURS & COMMANDES – SCHALTER & BEDIENUNGEN

CONTROL BOXES & PARTS

BOÎTIERS DE CONTRÔLE & ACCESSOIRES – BEDIENKÄSTEN & ERSATZTEILE



- Voltage: 12/24 V
- X1 – 1000

REF 112TP5018



- Voltage: 12 V
- X1A0500/75

REF 112TP5618



- Voltage: 12/24 V
- K1

REF 112TP8599



X1FA

REF 112TP6110



Voltage: 24 V

REF 112TP5843



- Voltage: 24 V
- UA/UAM

REF 112TP6112



Serie 9

REF 112TP8595



DHSMR 80

REF 112TP6338



- Length: 50 mm
- Width: 43 mm
- Height: 130 mm

REF 111TP8540



- Diameter: 12 x 18 mm
- Thread: SLW 17

REF 111TP8542

USED ON SÖRENSEN



CONTROLLERS

COMMANDES - BEDIENUNGEN



Operate your tail lift with our high-quality hand controls available in 2-button configuration.

Your benefits:

- Maximum comfort, high productivity
- Unique ergonomic design
- Easy push system
- With magnet and ring for easy handling
- Rubber shock absorber
- Usable in cold and wet environments

Specifications:

- Protection (IP): IP44 according to EN 60 529
- Contact type: Mafelec (push button)
- Max amperage: 10 A
- Operating temperature: -25 °C up to 60 °C
- Material: ABS plastic with rubber buffer
- Cable: polyurethane 3,5 metres working length

Applications:

Tail lifts, winches, cranes to name a few

Available colours:

Orange, yellow, green, red and blue

Available in different colours and in 2-button configuration. Ask for your quantity discount. All models are equipped with Mafelec switches.

2-button hand controls with cable and connector

Make	Colour	REF
Sörensen	Green	111TP5198

2-button hand controls without cable

Colour	REF
Orange	111TP5214
Blue	111TP5215
Red	111TP5216
Yellow	111TP5217
Green	111TP5218

CONTROLLERS

COMMANDES - BEDIENUNGEN



- 2 x NO
- Mafelec switch

REF 111TP8092



- 1 x NO + 1 x NC
- Mafelec switch

REF 111TP8093

See chapter Universal parts on page 712 for more parts.

SWITCHES & CONTROLLERS - INTERRUPTEURS & COMMANDES - SCHALTER & BEDIENUNGEN

USED ON SÖRENSEN



SWITCHES & CONTROLLERS – INTERRUPTEURS & COMMANDES – SCHALTER & BEDIENUNGEN

FOOT CONTROLLERS & PARTS

COMMANDES AU PIED & ACCESSOIRES – FUSSSCHALTER & ERSATZTEILE



- Length: 500 mm
- Lift

REF 111TP3964



- Length: 500 mm
- Lower

REF 111TP3965



Dimensions: 315 x 64 mm

REF 111TP3966



Service kit foot control unit

REF 111TP3967



Diameter: 32 x 15 mm

REF 111TP3968



Diameter: 37 mm

REF 111TP8531



1 key

REF 111TP8545



1 key + pendant

REF 111TP9359

USED ON SÖRENSEN



VARIOUS CONTROLLER PARTS

DIVERSES PIÈCES DE COMMANDE - WEITERE BEDIENUNG-ERSATZTEILE



- Diameter: 29 mm
- Length: 52 mm

REF 111TP3976



Magnetic contact holder
(U-shaped key)

REF 112TP5625

SWITCHES & CONTROLLERS - INTERRUPTEURS & COMMANDES - SCHALTER & BEDIENUNGEN

USED ON SÖRENSEN



CABLES & CONNECTORS - CÂBLES & CONNECTEURS - KABEL & STECKER

CABLES & PARTS

CÂBLES DE BATTERIE - KABEL & ERSATZTEILE



Length: 2100 mm

REF 111TP8548



Length: 5030 mm

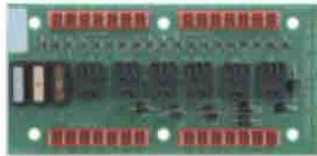
REF 111TP8549

USED ON SÖRENSEN



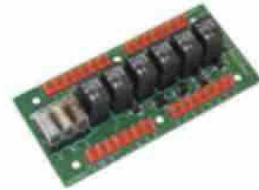
PRINTED CIRCUIT BOARDS/CONTROLLERS

CIRCUITS IMPRIMÉS/COMMANDES - LEITERPLATTEN/BEDIENUNGEN



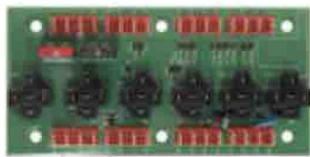
Voltage: 12/24 V

REF 111TP8196



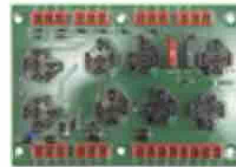
REF 111TP1912 - Voltage: 12 V

REF 111TP3978 - Voltage: 24 V



- X1
- 750 kg

REF 111TP3980



AST 1508-5008

REF 111TP3981



AST 1008

REF 111TP8546



REF 111TP8547



REF 111TP3979



UA/UAM

REF 112TP5761



UA/UAM

REF 112TP5906



Switch service board

REF 112TP5622

ELECTRICAL PARTS - PIÈCES ÉLECTRIQUES - ELEKTRISCHE ERSATZTEILE

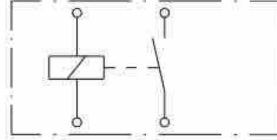
USED ON SÖRENSEN



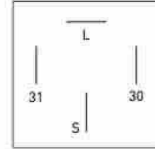
ELECTRICAL PARTS – PIÈCES ÉLECTRIQUES – ELEKTRISCHE ERSATZTEILE

RELAYS

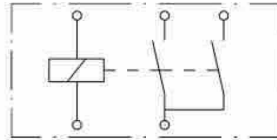
RELAIS – RELAIS



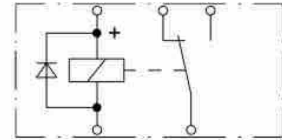
Voltage	Amperage	REF
12	20	111TP3982
24	20	111TP3983



Voltage	Amperage	REF
12/24	30	111TP3984



Voltage	Amperage	REF
24	15	111TP3985



Voltage	Amperage	REF
24	20	111TP3986

See chapter Universal parts on page 727 for more parts.

USED ON SÖRENSEN



DECALS

AUTOCOLLANTS - AUFKLEBER



- Length: 160 mm
- Width: 75 mm

REF 111TP3987

See chapter Universal parts on page 735 for more parts.

VARIOUS PARTS - DIVERSES PIÈCES - VERSCHIEDENE ERSATZTEILE

USED ON SÖRENSEN



NOTES – NOTIZEN

A large area of horizontal dotted lines for taking notes.