



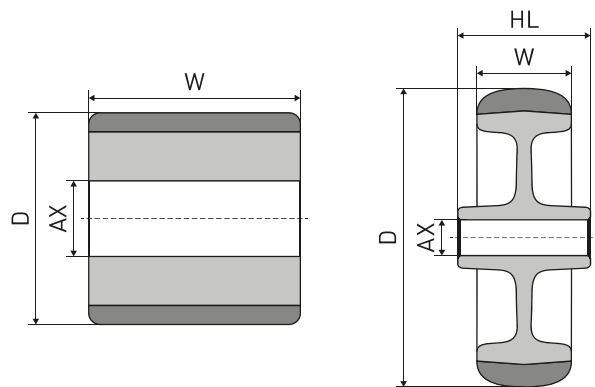
1

ROLLERS

FOR PALLET TRUCKS AND
HANDLING EQUIPMENT



NYLON ROLLERS WITH FULL-BORE

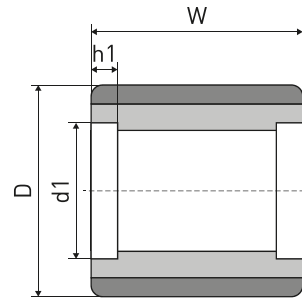


D x W	HL	AX	REF
20 x 10	12,5	9	147TA4637
20 x 16	17,5	9	147TA4638
20 x 30	30	7	147TA4639
25 x 15	15	8	129TA9159
27 x 20	20	10,4	129TA9161
30 x 9,5	9,5	10	129TA9162
30 x 20	20	10,4	147TA4640
32 x 20	24	10	129TA9503
32 x 30	30	8,8	147TA4641
34 x 34	38	8	139TA7657
34 x 50	50	20,5	129TA9163
34 x 54	54	20	128TA4404
37 x 20	20	11,2	147TA4642
38 x 36	36	11	129TA9167
38 x 46	46	17,3	107TA6772
38 x 47	47	20,5	129TA9168
38 x 62	62	20,25	147TA4643
39 x 37	37	17,5	129TA9169
40 x 16	16	20	147TA4644
40 x 36	38	11,5	129TA9172
40 x 63	63	20	105TA2327
41 x 25	25	20	129TA9177
42,5 x 39	39	12,3	129TA9178
44 x 17,5	18,3	18,7	138TA4546
44 x 20	20	19	147TA4645
45 x 18	18	14	107TA2885
45 x 19	20	13	139TA5205
45 x 33	33	19,5	129TA9181
45 x 45	40	12,8	140TA7660
46 x 20	20	15	107TA2886
47 x 29	36,5	12	107TA6922
49 x 24	25	15,4	124TA6768
49,5 x 36	36,5	8,2	129TA9183
50 x 10	10	6	147TA4646
50 x 22	22	8,5	147TA4647

D x W	HL	AX	REF
50 x 26	28	8,5	124TA5629
50 x 30	36	6,5	147TA4648
50 x 32	34	14	107TA2890
50 x 35	50	18,2	129TA9512
60 x 27	38	6	147TA4649
60 x 110	110	20	129TA9191
63 x 33	36	22,2	139TA1841
66 x 53	53	20,5	129TA9197
75 x 25	25	26	147TA4650
75 x 40	45	25	147TA4651
75 x 40	45	30	147TA4652
75 x 103	103	30	147TA4653
76 x 32	35	20	107TA3146
76 x 47	47	40	124TA6960
78 x 100	100	13	139TA8149
80 x 20	10	16,5	139TA7659
80 x 35	35	30	147TA4654
80 x 50	53	25	147TA4655
80 x 56	56	35	147TA4656
81 x 35	35	34	147TA4657
82 x 60	60	44	108TA8502
85 x 30	30	55	147TA4658
85 x 75	75	42	107TA7831
85 x 100	100	42	105TA4633
90 x 45	45	30	147TA4659
90 x 57	57	30	147TA4660
90 x 57	57	35	147TA4661
93 x 30	30	55	147TA4662
93 x 50	50	55	131TA9230
98 x 45	45	39	124TA6962
100 x 27	27	12	147TA4663
100 x 42	46,5	30	147TA4664
100 x 49	53	28	147TA4665
120 x 58	58	30	147TA4666



NYLON ROLLERS WITHOUT BEARINGS



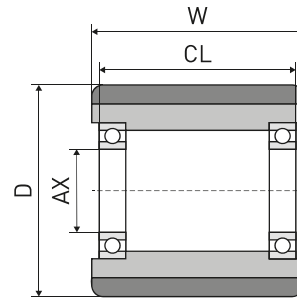
D x W	d1 x h1	Remark	REF
35 x 60	28 x 16		147TA4667
50 x 30	35 x 10		147TA4668
50 x 62	35 x 13		107TA2892
55 x 70	40 x 15		107TA2894
57 x 67	35 x 13		107TA2896
58 x 70	42 x 12		129TA9188
60 x 78	42 x 12		147TA4669
70 x 70	47 x 14		147TA4670
74 x 70	47 x 14		144TA8906
74 x 93	47 x 14		147TA4671
75 x 50	47 x 14		129TA9203
75 x 65	47 x 14		107TA2902
75 x 67	47 x 14		147TA4672
75 x 73	47 x 14		110TA8519
75 x 75	47 x 16		129TA9209
75 x 90	47 x 14		147TA4673
75 x 94	47 x 14		110TA8520
77 x 60	47 x 22		129TA9217
78 x 70	47 x 23	R	107TA6928
78 x 72	47 x 24	R	139TA9790
78 x 94	47 x 25	R	107TA6910
80 x 50	47 x 14		107TA2904
80 x 54	47 x 14		107TA2905
80 x 55	47 x 22		147TA4674
80 x 70	47 x 14		147TA4675
80 x 80	47 x 16		129TA9239
80 x 93	47 x 14		129TA9242
80 x 98	47 x 14		122TA8892
82 x 60	47 x 14		147TA4676
82 x 60	47 x 16		115TA5847
82 x 62	47 x 13		107TA2906
82 x 64	47 x 14		124TA2245
82 x 67	47 x 14		147TA4677

D x W	d1 x h1	Remark	REF
82 x 69	47 x 12		129TA9283
82 x 70	47 x 14		107TA2907
82 x 72	47 x 12		107TA2908
82 x 72	47 x 14		147TA4678
82 x 75	42 x 21	INS	124TA6773
82 x 78	47 x 22		107TA2910
82 x 86	47 x 14		129TA9293
82 x 90	47 x 14		129TA9296
82 x 91	47 x 12,5		147TA4679
82 x 96	52 x 14		147TA4680
82 x 98	47 x 12		147TA4681
82 x 100	47 x 12		147TA4682
82 x 100	47 x 14		147TA4683
82 x 100	47 x 16		128TA4344
82 x 105	47 x 14		121TA1018
83 x 98	42 x 22	INS	129TA9328
83 x 115	62 x 17		107TA7826
84 x 75	42 x 12		124TA2426
84 x 90	42 x 12,5		124TA2396
85 x 60	47 x 12		107TA7828
85 x 68	47 x 14		129TA9366
85 x 70	47 x 14		107TA7841
85 x 75	42 x 23		107TA7830
85 x 75	47 x 14		107TA2909
85 x 75	47 x 32		107TA7832
85 x 80	47 x 14		107TA7833
85 x 85	47 x 14		147TA4684
85 x 85	52 x 15		107TA7835
85 x 90	47 x 14		107TA7836
85 x 95	47 x 15		129TA9420
85 x 110	47 x 32		107TA7838
100 x 70	42 x 24		107TA7839

For bearings see page 275



NYLON ROLLERS WITH BEARINGS

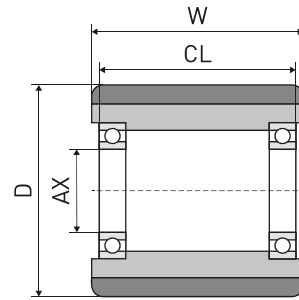


D x W	CL	AX	Bearing	Remark	REF
40 x 19	19	10	6000-		147TA4686
50 x 62	63,5	10	6003-	BS	129TA9185
50 x 70	70	17	6003-	4L	147TA4687
55 x 58	58	20	6204-		147TA4688
55 x 70	63	17	6203-		124TA6934
57 x 67	69	12,5	6003-	BS	129TA9186
58 x 64	67	19	6204-RSE		147TA4689
58 x 70	70	20	6004-		124TA6966
59 x 104	83,8	20	6004-		147TA4690
60 x 78	78	20	6004-		129TA9190
61 x 59	49	20	6204-		129TA9192
66 x 47	47	15	6303-		147TA4691
70 x 70	70	20	6204-		147TA4692
73 x 96	96	20	6204-		123TA8515
74 x 70	70	20	6204-(SS)	SSB	147TA4693
74 x 93	93	20	6204-(SS)	SSB	147TA4694
75 x 65	61	20	6204-		107TA2915
75 x 67	67	20	6204-		147TA4695
75 x 70	70	20	6204-		129TA9207
75 x 73	75	20	6204-		123TA8528
75 x 74	77	17	6303-ZV		107TA2916
75 x 75	71	17	6303-		129TA9210
75 x 75	76	17	6303-ZV(SS)	SSB	129TA9211
75 x 75	75	20	6204-		139TA9539
75 x 90	90	20	6204-		147TA4696
75 x 98	101	17	6303-ZV		107TA2917
77 x 60	44	20	6204-		129TA5612
78 x 70	58	20	6204-	R	129TA9218
80 x 50	50	20	6204-		107TA2918
80 x 54	60	20	6204-ZV		129TA9226
80 x 70	70	20	6204-		129TA9235
80 x 80	79	20	6204-		129TA9220
80 x 86	88	20	6204-		147TA4697
80 x 90	95	20	6204-ZV		107TA2919
80 x 90	90	20	6204-(SS)	SSB	147TA4698
80 x 98	103	17	S6303-ZV	SSB	129TA9244
82 x 59	59	20	6204-		147TA4699
82 x 59	59	20	6204-(SS)	SSB	147TA4700
82 x 59	59	20	6204-		147TA4701
82 x 60	56	20	6204-		124TA6765
82 x 60	60	20	6204-		129TA9260
82 x 60	60	20	6204-		147TA4702

D x W	CL	AX	Bearing	Remark	REF
82 x 64	64	20	6204-		107TA2921
82 x 64	64	20	6204-		107TA6860
82 x 64	64	20	6204-(SS)	SSB	129TA9263
82 x 65	69	20	6204-		147TA4703
82 x 67	67	20	6204-		124TA5642
82 x 67	67	20	6204-		124TA5640
82 x 68	66	20	6204-		147TA4704
82 x 68	66	20	6204-(SS)	SSB	147TA4705
82 x 69	73	20	6204-		129TA9273
82 x 69	69	20	6204-		129TA9271
82 x 69	62	20	6204-		147TA4706
82 x 70	70	17	6303-		107TA2923
82 x 70	70	20	6204-		107TA2924
82 x 70	64	20	6204-		119TA9891
82 x 70	74	20	6204-ZV		124TA5729
82 x 70	70	20	6204-(SS)	SSB	147TA4707
82 x 70	68	25	6005-		107TA2925
82 x 72	78	20	6204-ZV		107TA2926
82 x 82	82	20	6204-		129TA9292
82 x 82	82	20	6204-		147TA4248
82 x 83	83	20	6204-		139TA9587
82 x 86	86	20	6204-		129TA9294
82 x 90	92	20	6204-ZV		128TA4390
82 x 90	90	20	6204-		147TA4708
82 x 91	96	20	6204-ZV		147TA4709
82 x 98	101	17	6303-ZV	INS	107TA2928
82 x 98	104	20	6204-ZV		147TA4710
82 x 98	98	20	6005-	BS	107TA6853
82 x 98	98	20	6204-		124TA8619
82 x 100	102	17	22053-(BT)	INS	107TA2940
82 x 100	100	20	6204-		107TA2929
82 x 100	105,5	20	6204-ZV		129TA9317
82 x 100	104	20	6204-ZV		107TA2930
82 x 100	100	25	6005-		107TA2931
82 x 105	105	20	6204-(SS)	SSB	107TA2932
82 x 105	105	20	6204-		147TA4711
83 x 63	70	20	6204-ZV		147TA4712
82,5 x 90,5	94,5	20	6204-		129TA9326
84 x 56	60	20	6204-ZV		147TA4713
84 x 73	77	17	6303-ZV(SS)	SSB	129TA9333
85 x 60	64	20	6204-		107TA2933
85 x 60	65	25	6005-ZV		107TA2934



NYLON ROLLERS WITH BEARINGS

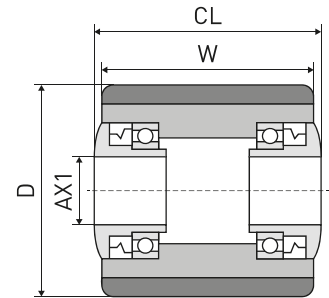


D x W	CL	AX	Bearing	Remark	REF
85 x 68	68	20	6204-		147TA4714
85 x 70	70	20	6204-		147TA4715
85 x 75	77	17	22053-(BT)		129TA9391
85 x 75	75	20	6204-		129TA9392
85 x 80	80	20	6204-		124TA6761
85 x 80	72	25	6205-		147TA4716
85 x 85	85	20	6204-		107TA2938
85 x 90	90	17	6303-		119TA9898
85 x 90	90	20	6204-		107TA2939

D x W	CL	AX	Bearing	Remark	REF
85 x 90	90	20	6204-		147TA4717
85 x 95	100	20	6204-ZV		107TA2942
85 x 100	102	17	22053-(BT)SS	SSB+INS	129TA9430
85 x 102	102	20	6204-		139TA9808
85 x 120	124	25	Not spec.		129TA9441
86 x 70	75	20	6204-ZV		107TA2941
98 x 82	80	30	6206-		147TA4718
100 x 50	54	20	6204-ZV		107TA3162



NYLON ROLLERS WITH SEALED BEARINGS

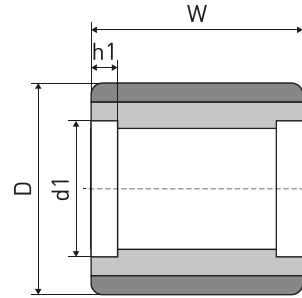


D x W	CL	AX	Bearing	Remark	REF
55 x 75	77	20	WP		124TA6760
55 x 100	102	20	OTS		147TA4719
78 x 70	72	20	WP		139TA9807
78 x 94	77	20	OTS		126TA6225
82 x 60	64	20	WP		129TA9258
82 x 65	70	20	WP		129TA9266
82 x 97	100	17	WP		139TA9733
82 x 98	104	20	WP	BS	129TA9318

D x W	CL	AX	Bearing	Remark	REF
82 x 100	104	20	OTS		107TA6776
84 x 68	74,5	20	WP		139TA9799
84 x 70	75,5	20	WP	BS	129TA9332
84 x 75	80	20	OTS		147TA4720
85 x 59	61	17	L		129TA9349
85 x 65	70	20	L		107TA2922
85 x 75	78	17	L		107TA2936
100 x 50	56	20	WP		129TA9458



POLYURETHANE ROLLERS WITHOUT BEARINGS

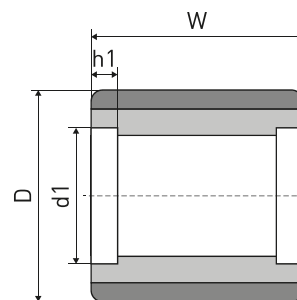


MAT	D x W	d1 x h1	Remark	REF
PU	50 x 60	35 x 10		129TA9184
PU	60 x 60	30 x 11		107TA2453
PU	70 x 60	42 x 13		107TA2454
PU	70 x 66	40 x 15		107TA2455
PU	70 x 70	35 x 11		107TA2456
PU	70 x 70	47 x 14		107TA2457
PU-Soft	74 x 70	47 x 14		147TA4721
PU	75 x 32	47 x 12		107TA2460
PU	75 x 40	47 x 14		129TA9202
PU	75 x 50	47 x 14		147TA4722
PU	75 x 62	47 x 15		129TA9204
PU	75 x 70	47 x 14		129TA9205
PU	75 x 75	47 x 14		107TA2466
U-92	75 x 75	47 x 14		145TA2482
PU	75 x 80	47 x 14		129TA9213
PU	75 x 88	47 x 15		145TA7703
PU	75 x 95	47 x 14		107TA2468
PU	76 x 32	47 x 14		129TA9215
U-XL	76 x 89	47 x 14		147TA4723
U-92	76 x 95	42 x 11		139TA9703
PU	78 x 70	47 x 23	R	107TA6930
PU	78 x 78	47 x 14		107TA2472
PU	78 x 78	47 x 16		107TA2473
PU	78 x 94	47 x 25	R	107TA6912
PU	80 x 28	47 x 14	R	129TA9221
PU	80 x 30	32 x 12		107TA2475
PU	80 x 38	52 x 17		107TA2477
PU	80 x 40	47 x 14		107TA2479
PU	80 x 50	47 x 14		147TA4724
PU	80 x 54	47 x 14		107TA2481
VU	80 x 54	47 x 14		129TA9224
VU	80 x 55	47 x 16		129TA9227
PU	80 x 55	47 x 22		147TA4725
PU	80 x 56	47 x 14		129TA9228
PU	80 x 60	47 x 22		145TA7702
PU	80 x 62	47 x 18		107TA2484
PU	80 x 68	47 x 21		107TA2485
PU	80 x 70	47 x 14		107TA2486
Pu-TS	80 x 70	47 x 14		147TA4726
PU	80 x 70	47 x 19		147TA4727
PU	80 x 74	42 x 14		107TA2490
PU	80 x 75	47 x 14		147TA4728

MAT	D x W	d1 x h1	Remark	REF
PU	80 x 80	47 x 14		107TA2491
PU	80 x 80	52 x 22		147TA4729
PU	80 x 82	47 x 22		147TA4730
PU	80 x 85	52 x 30		107TA2492
PU	80 x 88	47 x 18		107TA2493
PU	80 x 90	47 x 14		107TA2494
Pu-TS	80 x 93	47 x 14		129TA9241
PU	80 x 95	42 x 14	INS	107TA2495
PU	80 x 95	47 x 18		107TA2496
PU	80 x 121	52 x 25		147TA4731
PU	81 x 153	52 x 15		124TA6758
PU	82 x 28	32 x 11		108TA4067
PU	82 x 34	32 x 11	(FA)	129TA9247
PU	82 x 40	52 x 15		147TA4732
PU	82 x 45	47 x 14		147TA4733
PU	82 x 50	47 x 13		107TA2501
PU	82 x 50	47 x 17		107TA2502
PU	82 x 50	52 x 15		107TA2503
PU	82 x 55	40 x 21		107TA2480
PU	82 x 58	47 x 25		107TA2506
PU	82 x 60	47 x 13		107TA2507
PU	82 x 60	47 x 14		141TA1077
PU	82 x 60	47 x 16		107TA2508
VU	82 x 60	55 x 20		147TA4734
PU	82 x 62	47 x 13		107TA6858
PU	82 x 65	47 x 14		107TA2512
PU	82 x 65	47 x 15		107TA2513
Pu-TS	82 x 70	47 x 12		107TA2514
PU	82 x 70	47 x 13		107TA2515
PU	82 x 70	47 x 14		107TA2516
PU	82 x 70	47 x 16		107TA2517
PU	82 x 70	47 x 18		107TA2518
PU	82 x 72	47 x 14		107TA2519
PU	82 x 73	52 x 16		107TA2521
PU	82 x 76	42 x 15		129TA9286
PU	82 x 78	47 x 16		107TA2524
PU	82 x 78	47 x 20		147TA4735
PU	82 x 78	52 x 18		107TA2525
PU	82 x 83	52 x 15		107TA2526
VU	82 x 83	52 x 15		147TA4736
PU	82 x 85	47 x 14		147TA4737
PU	82 x 89	47 x 25		107TA2527



POLYURETHANE ROLLERS WITHOUT BEARINGS

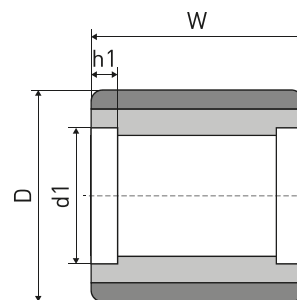


MAT	D x W	d1 x h1	Remark	REF
PU	82 x 90	47 x 16		147TA4738
PU	82 x 96	52 x 14		107TA6850
PU	82 x 98	47 x 12		107TA2530
PU	82 x 98	47 x 16		107TA2531
PU	82 x 100	47 x 12		107TA2533
PU	82 x 100	47 x 14		105TA4624
PU	82 x 100	47 x 16		107TA2535
VU	82 x 100	47 x 16		147TA4739
PU	82 x 100	52 x 15		107TA2536
VU	82 x 100	55 x 20		147TA4740
PU	82 x 105	47 x 14		107TA2538
VU	82 x 112	55 x 20		129TA9319
PU	82 x 114	40 x 14		107TA2539
PU	82 x 114	52 x 18		129TA9330
PU	82 x 115	52 x 16		107TA2540
PU	82 x 152	52 x 21		107TA2545
VU	82 x 152	52 x 30		147TA4741
VU	83 x 70	47 x 17		147TA4742
PU	83 x 74	50 x 30		107TA2549
PU	83 x 76	52 x 15		107TA2550
U-92	83 x 80	52 x 19		147TA4743
U-92	83 x 83	52 x 15		147TA4744
VU-HD	83 x 83	52 x 15		147TA4745
U-92	83 x 83	52 x 21		147TA4746
PU	83 x 95	62 x 20		107TA2553
PU	83 x 98	47 x 15		139TA9673
PU	83 x 102	52 x 18		107TA2554
PU	83 x 107	52 x 15		147TA4747
PU	83 x 107	52 x 30		147TA4748
U-HL	83 x 114	55 x 0		147TA4749
U-92	83 x 114	55 x 13		147TA4750
PU-TS	83 x 115	62 x 16		107TA2557
PU	83 x 127	52 x 16		107TA2559
U-92	83 x 149	52 x 30		124TA6762
U-92	83 x 150	52 x 16		147TA4751
U-XL	83 x 150	52 x 30		147TA4752
U-92	83 x 152	52 x 32		147TA4753
PU	83 x 165	50 x 30		107TA2562
U-92	83 x 165	52 x 36		115TA5834
U-HL	83 x 165	52 x 36		124TA6764
PU	84 x 100	47 x 19		129TA9340
PU	85 x 45	47 x 15		129TA9343

MAT	D x W	d1 x h1	Remark	REF
PU	85 x 45	52 x 15		129TA9344
PU	85 x 48	47 x 16		147TA4754
PU	85 x 50	52 x 15		129TA9345
PU	85 x 53	42 x 12		107TA2566
PU	85 x 60	40 x 21		147TA4755
PU	85 x 60	47 x 14		107TA2568
PU	85 x 60	47 x 20		107TA2569
PU	85 x 62	35 x 11		107TA2570
PU	85 x 62	47 x 14		129TA9360
PU	85 x 65	47 x 14		147TA4756
VU	85 x 66	52 x 25		147TA4757
PU	85 x 70	47 x 14		107TA2577
PU	85 x 70	47 x 15		124TA6767
PU	85 x 70	47 x 18		107TA2578
VU	85 x 70	47 x 32		129TA9367
PU	85 x 70	52 x 23		107TA2579
VU	85 x 70	52 x 25		147TA4758
PU	85 x 74	42 x 15		129TA9378
PU	85 x 75	42 x 24		110TA8509
VU	85 x 75	42 x 24		129TA9379
PU	85 x 75	47 x 14		129TA9384
PU	85 x 75	47 x 15		107TA2582
PU	85 x 75	47 x 24		147TA4759
PU	85 x 75	47 x 32		107TA2584
PU	85 x 78	47 x 14		115TA5835
PU	85 x 78	47 x 15		147TA4760
PU	85 x 80	47 x 14		107TA2587
PU	85 x 80	47 x 15		107TA2588
PU	85 x 80	47 x 17		147TA4761
PU	85 x 80	47 x 20		147TA4762
PU	85 x 80	47 x 25		107TA2589
PU	85 x 80	47 x 32		107TA2591
VU	85 x 80	52 x 19		147TA4763
PU	85 x 80	52 x 21		129TA9399
PU	85 x 80	52 x 22		107TA2595
PU	85 x 85	40 x 21		107TA2596
PU	85 x 85	47 x 14		107TA2597
PU	85 x 85	52 x 16		147TA4764
VU	85 x 86,5	40 x 21		107TA2598
PU	85 x 86,5	47 x 14		147TA4765
PU	85 x 90	47 x 14		107TA2601
PU	85 x 90	47 x 18		129TA9408



POLYURETHANE ROLLERS WITHOUT BEARINGS

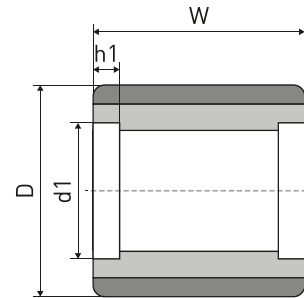


MAT	D x W	d1 x h1	Remark	REF
VU	85 x 90	52 x 25		129TA9405
PU	85 x 95	47 x 13		107TA2604
PU	85 x 95	47 x 14		107TA2605
PU	85 x 95	47 x 15		129TA9418
PU	85 x 95	47 x 20		129TA9419
PU	85 x 95	47 x 24		147TA4766
PU	85 x 95	47 x 32		107TA2608
PU	85 x 100	40 x 21		129TA9425
PU	85 x 100	47 x 14		129TA9426
PU	85 x 100	47 x 15		107TA2611
VU	85 x 100	47 x 15		147TA4767
PU	85 x 100	52 x 25		107TA2613
PU	85 x 105	47 x 15		107TA2614
PU	85 x 110	47 x 13		107TA2615
VU	85 x 110	47 x 14		107TA2616
PU	85 x 110	47 x 32		107TA2618
PU	85 x 110	52 x 15		107TA2619
VU	85 x 110	55 x 20		147TA4768
PU	85 x 115	47 x 13		107TA2620
VU	85 x 115	62 x 16		129TA9440
PU	85 x 120	47 x 14		107TA2621
PU	85 x 140	52 x 17		107TA2622
PU	86 x 40	47 x 14		147TA4769
PU	86 x 70	52 x 15		147TA4770
VU	86 x 90	42 x 12		124TA2397
PU	86 x 100	42 x 24		107TA2626
U-92	86 x 100	42 x 24		139TA9791
PU	89 x 48	47 x 21		147TA4771
U-92	89 x 73	47 x 14		129TA9447
PU	90 x 42	47 x 15		107TA2628
PU	90 x 48	47 x 20		147TA4772
VU	90 x 50	47 x 14		147TA4773
PU	90 x 50	47 x 15		107TA2629
PU	90 x 50	55 x 21		129TA9448
PU	95 x 54	62 x 54	R	129TA9455
PU	100 x 45	47 x 12		147TA4774
VU	100 x 45	55 x 13		129TA9536
PU	100 x 50	47 x 14		107TA2975
VU	100 x 50	47 x 14		139TA9369
PU	100 x 50	47 x 20		107TA2643
PU	100 x 60	47 x 14		129TA9459
PU	100 x 70	47 x 14		129TA9538

MAT	D x W	d1 x h1	Remark	REF
U-92	101 x 51	52 x 15		107TA2646
U-92	101 x 51	52 x 15		147TA4775
VU	101 x 73	55 x 21		147TA4776
PU	102 x 64	52 x 15		126TA6246
U-92	102 x 64	52 x 15		147TA4777
U-HL	102 x 64	52 x 15		147TA4778
U-92	102 x 64	52 x 19		147TA4779
U-92	102 x 67	62 x 20		107TA2647
PU	102 x 70	62 x 20		107TA2649
U-92	102 x 73	52 x 15		107TA2644
U-HL	102 x 73	52 x 15		147TA4780
U-SP	102 x 73	52 x 15		147TA4781
U-92	102 x 73	59 x 21		129TA9463
U-92	102 x 73	62 x 20		147TA4782
PU	102 x 92	52 x 16		107TA2651
U-92	102 x 105	52 x 19		129TA9464
PU	108 x 56	62 x 19		107TA2653
PU	108 x 57	52 x 19		107TA2652
PU	108 x 73	52 x 20		129TA9466
PU	110 x 50	47 x 16		107TA2655
VU	114 x 51	62 x 16-24		129TA9469
PU	115 x 51	52 x 15		129TA9470
PU	115 x 55	52 x 20	∅ core: 90 mm	147TA4783
PU	115 x 55	52 x 20	∅ core: 80 mm	147TA4784
PU	120 x 75	52 x 15		107TA2658
VU	125 x 150	52 x 18	R	129TA9475
PU	127 x 67	72 x 20		107TA2663
PU	127 x 73	52 x 15		124TA6899
U-92	127 x 73	80 x 25		107TA2662
U-HL	127 x 73	80 x 25		129TA9477
U-92	127 x 76	72 x 18		129TA9478
U-HL	127 x 89	62 x 21		147TA4785
U-HL	127 x 90	62 x 14		147TA4786
U-92	127 x 92	62 x 17		129TA9579
U-92	127 x 92	72 x 20		107TA2667
U-92	127 x 95	72 x 19		124TA6907
U-92	127 x 98	52 x 16		124TA6913
U-92	127 x 102	62 x 21		107TA2668
U-92	127 x 105	62 x 14		126TA6223
U-92	127 x 105	62 x 16	INS	129TA9480
U-HL	127 x 105	62 x 16	INS	129TA9481
PU	127 x 105	80 x 25	INS	126TA6222



POLYURETHANE ROLLERS WITHOUT BEARINGS



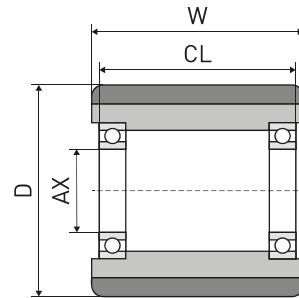
MAT	D x W	d1 x h1	Remark	REF
U-HL	128 x 73	62 x 16		147TA4787
PU	128 x 73	62 x 17	INS	129TA9482
U-HL	128 x 73	62 x 17		147TA4788
PU	128 x 73	62 x 20		129TA9483
U-HL	128 x 73	62 x 20	INS	129TA9485
PU	150 x 90	72 x 16	INS	129TA9487
PU	150 x 120	75 x 24		129TA9489
U-HL	152 x 70	80 x 22		129TA9643
U-SP	152 x 92,5	62 x 17		147TA4789

MAT	D x W	d1 x h1	Remark	REF
VU	152 x 92,5	62 x 17		129TA9491
U-92	152 x 100	72 x 31		124TA6900
PU	152 x 102	80 x 29		147TA4790
U-HL	152 x 105	80 x 25		129TA9494
PU	152 x 108	80 x 21	INS	129TA9495
U-HL	152 x 108	80 x 21		147TA4791
U-92	153 x 105	80 x 21		129TA9497
VU	180 x 100	62 x 16		147TA4792

For bearings see page 275



POLYURETHANE ROLLERS WITH BEARINGS

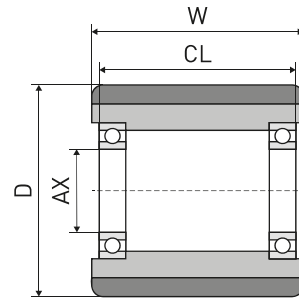


MAT	D x W	CL	AX	Bearing	Remark	REF
PU	40 x 20	20	10	6000-		107TA3045
PU	50 x 18	10	17	6003-	R+1L	147TA4793
PU	50 x 70	70	17	6003-		147TA4794
PU-Soft	50 x 70	73	17	6003-		128TA4450
PU	50 x 93	91	17	6003-		147TA4795
PU	55 x 65	65	15	6002-		139TA9728
PU	60 x 35	35	12	6201-		129TA9189
PU	64 x 52	47	19	RoI-r-Br		129TA9193
PU	70 x 60	60	20	6304-		107TA2677
PU	70 x 66	60	17	6203-		107TA2678
PU	70 x 70	70	15	6202-		107TA2679
PU	70 x 70	70	20	6204-		147TA4796
PU	70 x 70	71	20	6204-ZV		124TA6772
VU	70 x 78	70	20	6004-		147TA4797
PU	70 x 78	78	20	6204-		107TA2680
PU	70 x 100	96	20	6204-		107TA2681
PU	70 x 105	105	20	6204-		107TA2682
PU	73 x 98	98	20	6204-		147TA4798
PU	74 x 70	70	20	6204-		147TA4799
PU	74 x 93	93	20	6204-		147TA4800
PU	75 x 40	40	20	6204-		147TA4801
PU	75 x 50	50	20	6204-		147TA4802
PU	75 x 60	60	20	6204-		107TA2683
PU	75 x 62	62	17	6303-		107TA2684
PU	75 x 62	60	20	6004-		107TA2685
PU	75 x 62	64	20	6204-		147TA4803
PU	75 x 62	58	25	6005-		107TA2686
PU	75 x 70	70	20	6204-		129TA9206
PU	75 x 75	75	17	6303-		107TA2687
PU	75 x 75	75	20	6204-		107TA2688
PU	75 x 76	72	17	6203-		107TA2689
PU	75 x 76	76	20	6004-		129TA9212
PU	75 x 80	78	17	6203-		107TA2691
PU	75 x 80	80	20	6204-		107TA2692
PU	75 x 88	86	20	6204-		145TA7699
PU	75 x 90	90	20	6204-		147TA4804
PU	75 x 95	93	17	6203-		107TA2693
PU	75 x 95	95	20	6204-		107TA2694
VU	76 x 30	42	8	6201-	BS	147TA4805
U-92	76 x 50	50	19	Z9504RST		147TA4806
U-92	78 x 60	60	20	6204-		147TA4807
PU	78 x 70	73	20	6204-		107TA6927

MAT	D x W	CL	AX	Bearing	Remark	REF
PU	78 x 78	78	20	6204-		107TA2697
PU	80 x 30	30	8	6201-	BS	129TA9222
PU	80 x 30	40	12	6201-		147TA4808
PU	80 x 45	49	20	6204-		129TA9223
PU	80 x 50	50	20	6204-		107TA2698
PU	80 x 54	59	12	6303-	BS	107TA2705
PU	80 x 54	54	17	6303-		107TA2706
PU	80 x 54	52	20	6004-		129TA9225
PU	80 x 54	54	20	6204-		107TA2704
PU	80 x 54	50	25	6005-		107TA2703
PU	80 x 55	53	25	6005-		107TA2707
PU	80 x 60	58	20	6204-		147TA4809
PU	80 x 60	60	20	6204-		147TA4810
PU	80 x 62	54	20	6204-		107TA2710
PU	80 x 63	63	20	6204-		129TA9230
PU	80 x 65	63	17	6303-		107TA2713
PU	80 x 65	63	25	6005-		107TA2712
PU	80 x 70	63	17	6303-		107TA2716
PU	80 x 70	70	20	6204-		147TA4811
Pu-TS	80 x 70	70	20	6204-		147TA4812
PU	80 x 70	70	20	6204-		147TA4813
VU-AS	80 x 70	70	20	6204-		147TA4814
PU	80 x 70	72	20	6204-		134TA9138
PU	80 x 75	79	20	6204-ZV		147TA4815
PU	80 x 75	73	25	6005-		107TA2718
PU	80 x 79	73	20	6204-		107TA2719
PU	80 x 80	80	20	6204-		129TA9238
PU	80 x 80	76	25	6005-		147TA4816
PU	80 x 82	67	20	6204-		147TA4817
PU	80 x 88	80	20	6204-		107TA2721
PU	80 x 90	90	17	6303-		119TA9897
PU	80 x 90	90	20	6204-		129TA9240
PU	80 x 91	81	17	6203-		107TA2723
Pu-TS	80 x 93	93	17	6303-		147TA4818
PU	80 x 93	93	20	6204-		147TA4819
Pu-TS	80 x 93	93	20	6204-		128TA4518
PU	80 x 95	95	17	6303-		107TA2724
PU	80 x 95	86	20	6204-		107TA2726
PU	80 x 95	93	25	6005-		107TA2725
PU	82 x 34	32	12	6201-		129TA9248
VU	82 x 34	35	17	6303-		129TA9249
PU	82 x 40	40	25	6205-		147TA4820



POLYURETHANE ROLLERS WITH BEARINGS

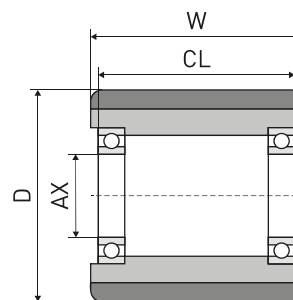


MAT	D x W	CL	AX	Bearing	Remark	REF
PU	82 x 50	48	17	6203-		124TA6771
PU	82 x 50	48	20	6304-		107TA2765
PU	82 x 50	50	25	6205-		107TA2728
PU	82 x 55	60	20	6204-ZV		147TA4821
PU	82 x 58	40	20	6204-		107TA2729
PU	82 x 60	58	17	6303-		107TA2708
PU	82 x 60	56	20	Not spec.		129TA9254
PU	82 x 60	60	20	6204-		129TA9253
PU	82 x 60	62	20	6204-ZV		147TA4822
PU	82 x 60	64	20	6204-ZV		129TA9357
PU	82 x 60	60	25	6005-		129TA9256
PU	82 x 62	64	20	6204-		107TA6859
PU-Soft	82 x 62	64	20	6204-		147TA4823
PU	82 x 62	66	20	6204-ZV		129TA9261
PU	82 x 65	63	20	6204-		107TA2714
PU	82 x 65	65	20	6204-		129TA9265
PU	82 x 66	71	20	6204-ZV		129TA9267
VU	82 x 66	71	20	6204-ZV		124TA1591
PU	82 x 68	68	20	6204-		124TA5641
PU	82 x 68	74	20	6204-ZV		129TA9269
VU	82 x 69	62	20	6204-		129TA9272
PU	82 x 70	81	12	6303-	BS	129TA9276
PU	82 x 70	66	17	6303-		129TA9277
PU	82 x 70	70	17	6303-		119TA9892
PU	82 x 70	62	20	6204-		147TA4824
PU	82 x 70	62	20	6004-		129TA9278
PU	82 x 70	66	20	6204-		129TA9281
PU	82 x 70	68	20	6204-ZV		147TA4825
PU	82 x 70	70	20	6204-		147TA4826
VU	82 x 70	70	20	6204-		147TA4827
Pu-TS	82 x 70	70	20	6204-		128TA4336
PU	82 x 70	72	20	6204-ZV		129TA9280
PU	82 x 70	74	20	6204-ZV		147TA4828
VU	82 x 70	74	20	6204-ZV		147TA4829
PU	82 x 70	70	25	6005-		107TA2734
PU	82 x 72	74	20	6204-ZV		124TA2618
PU	82 x 75	75	20	6204-		128TA4342
PU	82 x 76	70	20	6004-		107TA2740
PU	82 x 78	72	20	6304-		147TA4830
PU	82 x 78	74	20	6204-		107TA2742
PU	82 x 78	78	20	6204-		107TA2741
PU	82 x 78	84	20	6204-ZV		129TA9287

MAT	D x W	CL	AX	Bearing	Remark	REF
PU	82 x 78	78	25	6205-		107TA2743
PU	82 x 80	82	20	6204-ZV		125TA7059
VU	82 x 82	86	20	6204-ZV		129TA9291
PU	82 x 83	82	20	6304-		107TA2744
PU	82 x 85	85	20	6204-		107TA2746
VU-AS	82 x 85	90	20	6204-ZV		147TA4831
PU	82 x 89	67	20	6204-		107TA2749
VU	82 x 89	82	20	6204-		129TA9295
PU	82 x 90	90	20	6204-		107TA2750
PU	82 x 90	96	20	6204-ZV		124TA1579
PU	82 x 91	96	20	6204-ZV		129TA9297
PU	82 x 96	98	20	6205-	Spe- cial-BS	147TA3702
PU	82 x 96	98	20	6304-		107TA2752
PU	82 x 98	98	20	6204-		107TA2753
PU	82 x 100	96	17	6303-		107TA2756
PU	82 x 100	95	20	6204-		129TA9309
PU	82 x 100	96	20	6204-		129TA9314
Pu-TS	82 x 100	100	20	6204-		128TA4339
PU	82 x 100	104	20	6204-		129TA9312
PU	82 x 100	106	20	6204-ZV		129TA9311
PU	82 x 100	100	25	6205-		107TA2757
PU	82 x 100	100	25	6005-		107TA2754
PU	82 x 127	120	25	6205-		129TA9321
PU	82 x 127	127	25	6205-		107TA2758
U-92	83 x 73	73	20	6204-		147TA4832
PU	83 x 82	83	25	6205-		147TA4833
VU-HD	83 x 83	83	25	6205-		129TA9325
U-92	83 x 114	114	30	6006-		129TA9331
U-92	83 x 165	165	25	6205-	4L	147TA4834
U-HL	83 x 165	165	25	6205-	4L	147TA4835
U-HL	83 x 165	170	25	8505/18Z	4L	147TA4836
PU	84 x 93	93	20	6204-		147TA4837
PU	85 x 30	32	12	6005-	BS	147TA4838
PU	85 x 40	40	20	6204-		107TA2759
VU	85 x 41	42	17	22053- (BT)	INS	147TA4839
VU	85 x 43	43	20	6204-		124TA6766
PU	85 x 45	43	20	6204-		107TA2762
PU	85 x 45	43	25	6005-		107TA2760
PU	85 x 46	50	20	6204-ZV		107TA2763
PU	85 x 50	48	20	6204-		107TA2768



POLYURETHANE ROLLERS WITH BEARINGS

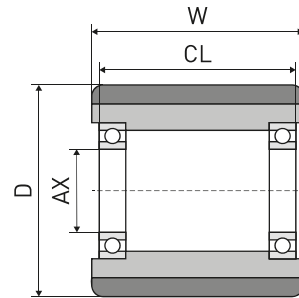


MAT	D x W	CL	AX	Bearing	Remark	REF
PU	85 x 50	50	25	6205-		107TA2769
VU	85 x 53	53	20	6004-		129TA9347
PU	85 x 55	55	20	6204-		107TA2772
PU	85 x 55	55	25	6005-		129TA9348
PU	85 x 60	60	17	6303-		107TA2777
PU	85 x 60	60	20	6204-		129TA9356
VU	85 x 60	62	20	6204-ZV		129TA9350
PU	85 x 60	66	20	6204-ZV		147TA4840
PU	85 x 60	58	25	6005-		107TA2775
PU	85 x 60	62	25	6005-ZV		107TA2711
PU	85 x 62	62	25	6205-		107TA2780
PU	85 x 65	65	20	6204-		129TA9364
PU	85 x 65	63	25	6005-		107TA2781
PU	85 x 68	70	20	6204-		147TA4841
PU	85 x 70	62	17	6303-		147TA4842
PU	85 x 70	70	17	6303-		129TA8330
PU	85 x 70	70	20	6204-		107TA2785
PU	85 x 70	54	25	6205-		107TA2787
PU	85 x 70	70	25	6005-		107TA2784
PU	85 x 75	75	17	6303-		107TA2790
PU	85 x 75	77	17	6303-ZV	INS	107TA2788
PU-Soft	85 x 75	77	17	6303-ZV	INS	147TA4843
VU	85 x 75	77	17	6303-ZV		147TA4844
PU	85 x 75	79	17	22053-(BT)		129TA9385
PU	85 x 75	61	20	6004-		129TA9386
PU	85 x 75	75	20	6204-		147TA4845
VU	85 x 75	75	20	6204-		147TA4846
PU	85 x 75	71	25	6005-		129TA9390
PU	85 x 78	78	17	6303-		107TA2799
PU	85 x 78	76	20	6204-		107TA2793
PU	85 x 78	74	25	6005-		107TA2796
PU	85 x 78	78	25	6005-		107TA2792
PU	85 x 80	80	20	6204-		129TA9402
PU	85 x 80	80	25	6005-		147TA4847
PU	85 x 85	85	17	6303-		107TA2802
PU	85 x 85	85	20	6204-		107TA2803
PU	85 x 85	85	25	6005-		107TA2801
PU	85 x 86,5	86,5	20	6204-		107TA2806
VU	85 x 86,5	88,5	20	6204-ZV		147TA4848
PU	85 x 86,5	84,5	25	6005-		107TA2805
PU	85 x 90	83	17	6303-		107TA2810

MAT	D x W	CL	AX	Bearing	Remark	REF
PU	85 x 90	82	20	6204-		129TA9412
VU	85 x 90	83	20	6204-		147TA4849
PU	85 x 90	90	20	6204-		147TA4850
VU	85 x 90	90	20	6204-	4L	129TA9407
PU	85 x 90	94	20	6204-ZV		129TA9411
PU	85 x 90	96	20	6204-ZV		129TA9444
PU	85 x 90	78	25	6005-		107TA2811
PU	85 x 90	88	25	6005-		107TA2808
PU	85 x 95	93	17	6303-		107TA2815
PU	85 x 95	95	20	6204-		107TA2814
PU	85 x 95	93	25	6005-		107TA2813
VU	85 x 98	101	17	6303-ZV		107TA6668
PU	85 x 100	98	17	6303-		107TA2820
PU-Soft	85 x 100	100	17	6303-		147TA4851
PU	85 x 100	101	17	6303-		107TA2816
PU	85 x 100	101	17	6303-ZV	INS	129TA9427
PU	85 x 100	100	20	6204-		107TA2817
PU	85 x 100	84	25	6205-		129TA9429
PU	85 x 100	96	25	6005-		147TA4852
PU	85 x 100	100	25	6005-		147TA4853
PU	85 x 100	104	25	6005-ZV		147TA4854
PU	85 x 105	103	20	6204-		107TA2822
PU	85 x 110	103	17	6303-		107TA2825
PU	85 x 110	108	20	6204-		107TA2824
VU	85 x 110	114	25	6005-ZV		129TA9439
PU	85 x 115	113	25	6005-		107TA2826
PU	85 x 115	115	30	6206-		147TA4855
PU	85 x 118	116	20	6204-		107TA2829
PU	85 x 118	116	25	6005-		107TA2828
PU	85 x 138	138	20	6304-		107TA2830
PU	85,5 x 90	90	17	6303-		119TA9899
PU	86 x 100	102	17	22053-(BT)		129TA9445
PU	86 x 110	112	25	6005-ZV	4L	147TA4856
PU	90 x 50	50	20	6204-		129TA9449
VU	90 x 50	52	20	6204-ZV		147TA4857
PU	90 x 50	54	20	6204-ZV		129TA9451
VU	90 x 50	48	25	6205-		147TA4858
PU	95 x 50	42	17	6303-		124TA6940
PU	95 x 54	54	30	6206-	R	129TA9456
PU	100 x 40	40	25	6205-		147TA4859



POLYURETHANE ROLLERS WITH BEARINGS

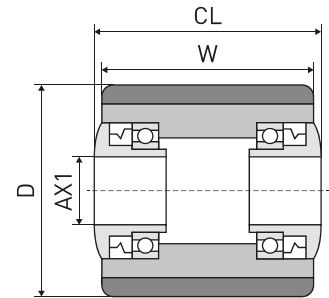


MAT	D x W	CL	AX	Bearing	Remark	REF
PU	100 x 45	54	10	22053-(BT)	BS	107TA3055
PU	100 x 45	38	20	6204-		147TA4860
VU	100 x 45	32,5	30	6006-		147TA4861
PU	100 x 50	50	20	6204-		129TA9537
PU	100 x 50	54	20	6204-ZV		107TA3051
VU	100 x 50	54	20	6204-ZV		147TA4862
VU	100 x 50	54	25	6005-ZV		129TA9457
VU	100 x 50	52	40	6008-		147TA4863
VU	100 x 76	58	25	6305-		129TA9539
PU	101 x 70	70	20	6204-		147TA4864
VU	102 x 45	45	20	6004-		147TA4865
U-92	102 x 51	51	25	6205-		108TA8508
PU	102 x 64	64	25	6205-		129TA9461
U-92	102 x 64	70	25	91107-		147TA4866

MAT	D x W	CL	AX	Bearing	Remark	REF
PU	110 x 60	50	20	6304-		129TA9468
VU	120 x 40	31	35	6007-		147TA4867
PU	122 x 60	65	12	6205-	BS	124TA6929
VU	125 x 150	144	25	6205-		129TA9476
U-HL	127 x 73	73	35	6307-		147TA4868
VU	140 x 73	73	30	6206-		147TA4869
PU	150 x 100	100	30	6206-		108TA8510
VU	150 x 100	100	30	6206-	R&T	147TA4870
VU	150 x 102	88	40	6008-		107TA3097
VU	150 x 130	135	25	6307-	BS	129TA9490
VU	150 x 130	130	30	6206-		107TA3098
U-92	152 x 51	51	35	6307-		147TA4871
VU	152 x 92,5	92,5	25	6305-		129TA9492
U-HL	152 x 108	108	31	6307-		147TA4872



POLYURETHANE ROLLERS WITH WATERPROOF SEALS (WP)

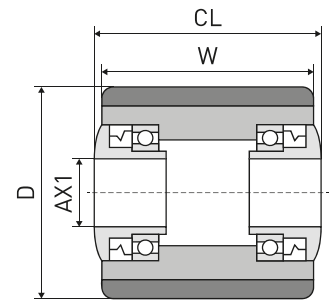


MAT	D x W	CL	AX	Remark	REF
PU	71 x 60	65	12	BS	147TA4873
PU	71 x 95	100	12	BS	129TA9200
VU	75 x 100	104	20		147TA4874
PU	77 x 45	50	12		147TA4875
PU	77 x 70	75	12		147TA4876
PU	78 x 70	72	20		107TA6926
VU	80 x 70	75	20		107TA2832
PU	80 x 74	76	13	BS	147TA4877
VU	80 x 74	76	13	BS	147TA4878
VU	80 x 80	85	12		147TA4879
PU	80 x 95	97	20		116TA5064
VU	80 x 95	97	20		147TA4880
VU	80 x 95	100	20		115TA5836
PU	80 x 105	110	12		147TA4881
PU	82 x 58	63	20		129TA9251
PU	82 x 58	67	20		129TA9250
PU	82 x 60	65	12		129TA9252
VU	82 x 60	64,4	20		147TA4882
VU	82 x 60	63	25		129TA9255
PU	82 x 65	70	20		129TA9264
PU	82 x 68	75	20		129TA9268
PU-Soft	82 x 70	74	20		147TA4883
VU	82 x 70	74	20		147TA4884
VU	82 x 82	87,4	12		147TA4885
VU	82 x 82	86	20		147TA4886
VU	82 x 90	95	20		147TA4887
PU	82 x 95	99,7	12,2	BS	129TA9298
VU	82 x 95	100	20		147TA4888
PU-Soft	82 x 100	104,7	20		147TA4889
VU	82 x 100	106	25		129TA9304
VU	82 x 110	114	25		147TA4890
VU	82 x 110	116	30	4L	147TA4891
VU	82 x 112	116	30		129TA9320
PU	82 x 114	119	17		147TA4892
PU	83 x 79	83	20		147TA4893
VU	84 x 95	97	25		143TA7777
PU	84 x 95	97	25		147TA4894
PU	84 x 100	104	25		129TA9341
PU	85 x 44	49	12		107TA2833
PU-Soft	85 x 44	46	25		147TA4895
PU	85 x 45	50	20		107TA2835
VU	85 x 50	55	12	BS	147TA4896

MAT	D x W	CL	AX	Remark	REF
PU	85 x 50	55	20		107TA2838
PU	85 x 50	55	25		129TA9346
PU	85 x 55	60	17		107TA2840
PU	85 x 55	60	20		107TA2841
PU	85 x 55	60	25		107TA2842
VU	85 x 60	65	12	BS	116TA5217
PU	85 x 60	65	17		107TA2844
PU	85 x 60	65	20		129TA9354
VU	85 x 60	65	25		107TA2846
PU-Soft	85 x 63	68	20		147TA4897
VU	85 x 65	70	20		107TA2848
PU	85 x 65	70	25		107TA2849
VU	85 x 66	70	17	BS	129TA9365
PU	85 x 70	75	12		107TA2850
PU	85 x 70	75	17		107TA2851
PU	85 x 70	70	20		129TA9373
PU	85 x 70	75	20		105TA4622
VU	85 x 70	75	20		129TA9369
VU	85 x 70	75	20	BS	129TA9368
PU	85 x 70	75	25		107TA2853
PU	85 x 73	78	20		129TA9376
VU-AS	85 x 73	78	20		129TA9375
VU	85 x 74	76	13	BS	129TA9377
PU	85 x 74	76	20		128TA4341
VU	85 x 75	80	12		129TA9380
PU	85 x 75	76	13	BS	147TA4898
PU	85 x 75	80	17		107TA2854
PU	85 x 75	80	20		107TA2855
VU	85 x 75	80	25		129TA9389
PU	85 x 80	85	12	BS	107TA2857
VU	85 x 80	85	12	BS	129TA9393
PU-Soft	85 x 80	85	12		147TA4899
VU-HD	85 x 80	85	12	BS	129TA9397
PU	85 x 80	82	17		108TA4140
PU	85 x 80	85	17		107TA2858
VU	85 x 80	85	17		147TA4900
PU	85 x 80	85	20		107TA2859
VU	85 x 80	83	25		129TA9395
PU	85 x 80	85	25		107TA2860
VU	85 x 80	85	25		129TA9396
VU-HD	85 x 85	90	12		147TA4901
PU	85 x 85	90	12,5	BS	116TA5218



POLYURETHANE ROLLERS WITH WATERPROOF SEALS (WP)

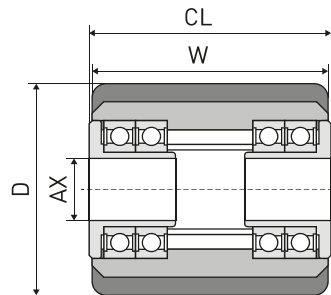


MAT	D x W	CL	AX	Remark	REF
VU	85 x 85	90	12,5	BS	147TA4902
PU	85 x 85	90	17		107TA2862
PU	85 x 85	90	20		129TA9403
VU	85 x 85	90	20		147TA4903
VU	85 x 85	89,7	25	2Rol+4L	108TA8577
PU	85 x 85	90	25		107TA2864
VU	85 x 85	90	25		128TA4343
PU	85 x 90	95	17		107TA2865
PU	85 x 90	90	20		129TA9410
VU	85 x 90	94	20		129TA9406
PU	85 x 90	95	20		107TA2866
PU	85 x 90	95	25		107TA2867
VU	85 x 90	95	25		147TA4904
PU	85 x 95	100	17		107TA2868
VU	85 x 95	100	20		129TA9414
PU	85 x 95	100	20		107TA2869
PU	85 x 95	100	25		107TA2870
VU	85 x 95	100	25		147TA4905
VU	85 x 98	102,5	20	BS	129TA9421
PU	85 x 100	105	17		107TA2871
PU	85 x 100	104	20		107TA2872
VU	85 x 100	105	20		129TA9424

MAT	D x W	CL	AX	Remark	REF
VU	85 x 100	102	25	SSB	147TA4906
PU	85 x 100	102	25		147TA4907
PU	85 x 100	104,5	25		107TA2873
PU	85 x 105	110	12	BS	107TA2874
VU	85 x 105	110	12	BS	147TA4908
PU-Soft	85 x 105	110	12		147TA4909
PU	85 x 105	110	20		107TA2876
PU	85 x 105	110	25		107TA2877
PU	85 x 110	115	17		107TA2878
PU	85 x 110	115	20		107TA2879
PU	85 x 110	114	25		129TA9437
VU	85 x 110	114	25		129TA9435
PU	85 x 110	115	25		107TA2880
PU	85 x 110	115	25	2Rol+4L	108TA8576
VU	85 x 110	115	25		129TA9436
VU	85 x 140	145	25		147TA4910
PU	90 x 50	52	20		135TA9974
VU	90 x 108	110	25		129TA9454
VU	100 x 73	77	20		147TA4911
VU	101 x 51	56	19		147TA4912
VU	101 x 73	75	25		147TA4913
VU	110 x 50	55	20		107TA2881



POLYURETHANE ROLLERS WITH HEAVY-DUTY SHIELDS (HDS)

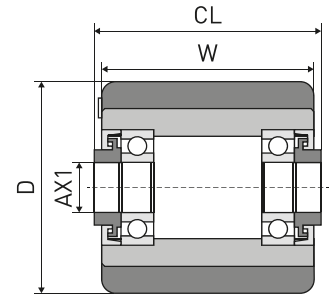


MAT	D x W	CL	AX	Remark	REF
VU	82 x 68	73,5	12		147TA4914
VU	84 x 90	95	12	BS	129TA9337
VU	85 x 41	47	12		129TA9342
VU	85 x 60	65	25	BS+4L	129TA9358
VU	85 x 75	79	12,5	Inox BS	147TA4915
VU	85 x 79	80	25	4L	115TA5850
VU	85 x 80	81,5	17	4L+BS	129TA9400
VU-HD	85 x 80	85	25		129TA9398
VU	85 x 85	85	25	BS+4L	108TA8578
VU	85 x 87	89,5	12		147TA4916
PU	85 x 95	100	17		147TA4917
VU-AS	85 x 95	99,7	25		147TA4918
VU	85 x 100	102	12,5	4L	129TA9422

MAT	D x W	CL	AX	Remark	REF
VU	85 x 100	102	17	4L	129TA9423
VU-HD	85 x 100	102	17	4L	147TA4919
VU	85 x 100	104,8	25	4L	147TA4920
VU-HD	85 x 105	110	12	BS	147TA4921
VU	85 x 108	110	25	4L+BS	129TA9433
VU	85 x 110	115	12	BS	129TA9434
VU	85 x 110	115	25		147TA4922
VU	90 x 88	92	12	4L	129TA9452
VU-HD	90 x 88	92	12	4L	129TA9453
VU	90 x 95	97	12,5		147TA4923
VU	90 x 100	104	12	4L	147TA4924
VU	150 x 100	109	16		147TA4925
VU	170 x 152	156	40		124TA6953



POLYURETHANE ROLLERS WITH LABYRINTH SEALS

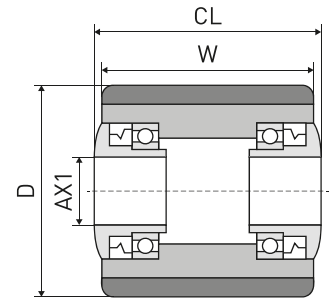


MAT	D x W	CL	AX	REF
PU	81 x 53	55	17	129TA9245
VU	81 x 65	67	20	129TA9246
PU	82 x 70	75	20	129TA9279
PU	82 x 74	78	20	129TA9285
PU	82 x 100	105	20	129TA9307
VU	84 x 55	60	20	116TA5227
PU	84 x 100	101	20	116TA5031
PU	85 x 60	61,5	17	108TA4139
VU	85 x 60	65	20	129TA9355
PU	85 x 65	70	17	129TA9363
PU	85 x 70	74	20	129TA9372

MAT	D x W	CL	AX	REF
VU	85 x 75	80	20	116TA5106
PU	85 x 75	80	25	107TA2856
VU	85 x 80	82	17	147TA4926
VU-AS	85 x 80	82	17	147TA4927
PU	85 x 80	85	20	129TA9401
PU	85 x 86,5	89	17	108TA4141
PU	85 x 100	102	17	108TA4142
VU	85 x 100	102	25	116TA4556
VU-AS	85 x 100	102	25	147TA4928
VU	85 x 105	110	20	116TA5107
VU	85 x 105	110	25	129TA9432



POLYURETHANE ROLLERS WITH SPECIAL SEALS

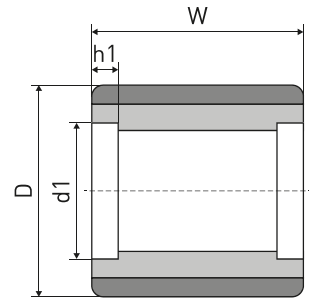


MAT	D x W	CL	AX	Remark	REF
PU	78 x 94	72	20	CLP	107TA6909
PU	78 x 94	72	20	CLP	129TA9219
PU	80 x 60	65	20		145TA7690
PU	80 x 74	76	13	Caps+BS	116TA5059
VU	80 x 74	76	13	Caps+BS	147TA4929
PU	80 x 120	120	20		147TA4930
PU	82 x 78	78	20		129TA9288
VU	82 x 89	96	20		147TA4931

MAT	D x W	CL	AX	Remark	REF
PU	82 x 98	98	20		129TA9301
PU	83 x 95	96	20	Caps	129TA9327
PU	83 x 100	102	15		129TA9329
VU	85 x 74	76	13	Caps+BS	147TA4932
PU	85 x 74	76	13	Caps+BS	147TA4933
PU	85 x 75	77	20		129TA9387
PU	95 x 50	50	17		129TA9517
VU	100 x 73	78	20		107TA3056



POLYURETHANE + NYLON CORE ROLLERS WITHOUT BEARINGS



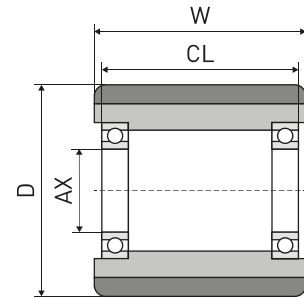
D x W	d1 x h1	Remark	REF
78 x 94	47 x 25	CLP	107TA6909
78 x 94	47 x 25		129TA9219
78 x 98	47 x 14		107TA2474
82 x 70	47 x 16		147TA4934
82 x 98	47 x 14		129TA9315
82 x 100	47 x 23		147TA4935

D x W	d1 x h1	Remark	REF
84 x 75	42 x 12		124TA2428
85 x 75	42 x 23	INS	108TA8540
85 x 89	47 x 14		147TA4936
85 x 89	47 x 18		147TA4937
85 x 90	42 x 22		124TA2398
85 x 100	42 x 23	INS	107TA6676

For bearings see page 275



POLYURETHANE + NYLON CORE ROLLERS WITH BEARINGS

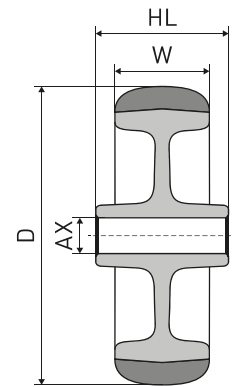
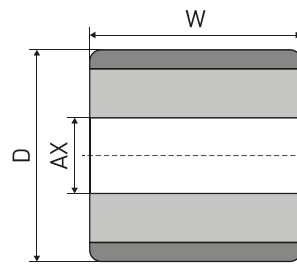


D x W	CL	AX	Bearing	Remark	REF
74 x 97	101,5	17	6303-ZV(SS)	SSB	147TA4938
75 x 67	67	20	6204-		147TA4939
75 x 75	75	20	6204-		108TA8541
75 x 98	101	17	6303-ZV		110TA8523
76 x 98	98	20	6204-		123TA8514
80 x 60	60	20	6204-		147TA4940
80 x 65	65	20	6204-(SS)	SSB	147TA4941
80 x 90	88	20	6204-		147TA4942
80 x 94	94	20	6204-		147TA4943
82 x 50	50	20	6204-		147TA4944
82 x 65	63	20	6204-		108TA8545
82 x 65	65	20	6204-(SS)	SSB	147TA4945
82 x 70	70	20	6204-(SS)	SSB	108TA8543
82 x 70	70	20	6204-		147TA4946
82 x 70	74	20	6204-ZV		108TA8544
82 x 78	78	20	6204-		147TA4947
82 x 90	90	20	6204-		108TA8547

D x W	CL	AX	Bearing	Remark	REF
82 x 91	95	20	6204-ZV		108TA8548
82 x 98	98	20	6204-		123TA9594
82 x 100	82	20	6204-		147TA4948
82 x 100	98	20	6204-		108TA8542
82 x 105	105	20	6204-(SS)	SSB	121TA1057
82 x 105	105	20	6204-		108TA8549
83 x 74	70	20	6204-		129TA9324
84 x 100	101	17	6303-ZV	INS	107TA6667
84 x 100	101	17	6303-SS	SSB	147TA4949
85 x 74	77	17	6303-ZV	INS	107TA6683
85 x 74	75	20	6204-		108TA8551
85 x 75	77	17	22053-(BT)	INS	108TA8550
85 x 89	89	20	6204-		147TA4950
85 x 90	82	20	6204-(SS)	SSB	147TA4951
85 x 100	101	17	22053-(BT)		107TA6665
86 x 70	63	20	6204-(SS)	SSB	147TA4952



STEEL ROLLERS WITH FULL-BORE

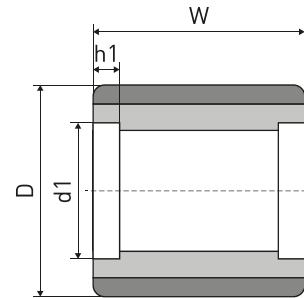


D x W	HL	AX	REF
24 x 40	40	12	124TA9152
24 x 40	40	14	131TA5498
25 x 31	31	14	107TA6947
32 x 24	28	18	147TA4953
34 x 9,5	11	20,1	147TA4954
35 x 25	21	19	147TA4955
36 x 10	10	20	129TA9164
36 x 10	10	20,5	106TA7045
38 x 16	16	16	129TA9165
38 x 50	50	20	147TA4956

D x W	HL	AX	REF
40 x 30	30	20	147TA4957
40 x 45	45	18	129TA9175
40 x 45	45	20	129TA9176
40 x 66	66	20	129TA9196
45 x 102	102	22	147TA4958
50 x 20	20	20	129TA9182
72 x 50	50	24	147TA4959
76 x 32	35	20	107TA2903
78 x 38	36	20	147TA4960
100 x 76	76	52	129TA9540



STEEL ROLLERS WITHOUT BEARINGS



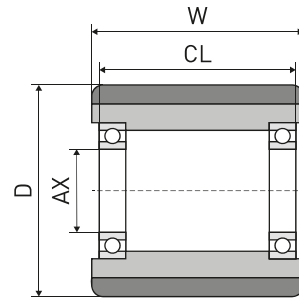
D x W	d1 x h1	REF
40 x 45	23 x 16	129TA9174
40 x 66	23 x 16	129TA9195
55 x 60	35 x 11,5	147TA4961
70 x 79	20	129TA9199
80 x 62	47 x 17	107TA2946
80 x 70	47 x 16	129TA9232
80 x 88	47 x 17	107TA2950
80 x 93	47 x 15	107TA2952
82 x 28	32 x 11	147TA4962
82 x 34	32 x 11	107TA2954
82 x 62	52 x 15	111TA1204

D x W	d1 x h1	REF
82 x 66	47 x 12,5	147TA4963
82 x 73	47 x 16	147TA4964
82 x 100	47 x 16	107TA6777
83 x 70	47 x 18	107TA2956
83 x 75	42 x 21	107TA2957
85 x 80	40 x 21	147TA4965
85 x 80	47 x 16	107TA2965
85 x 90	47 x 18	107TA2967
85 x 95	47 x 15	147TA4966
100 x 75	62 x 16	147TA4967
100 x 75	62 x 26	147TA4968

For bearings see page 275



STEEL ROLLERS WITH BEARINGS



D x W	CL	AX	Bearing	REF
40 x 20	20	10	6000-	129TA9171
50 x 75	75	20	OTS	124TA6936
80 x 70	66	20	6204-	129TA9233
80 x 100	100	20	6204-	107TA6775
82 x 62	64	20	6304-	129TA9262
82 x 73	68	20	6204-	124TA5720

D x W	CL	AX	Bearing	REF
82 x 98	94	20	6204-	147TA4969
82 x 100	96	20	6204-	129TA9316
83 x 70	62	20	6204-	147TA4970
84 x 75	76,5	17	6303-ZV	123TA6149
84 x 75	80	20	OTS	129TA9335
100 x 85	100	17	6303-ZV	107TA6666