



USED ON  
**DINOLIFT**

# USED ON DINOLIFT



JOYSTICKS & CONTROL BOXES

## ELECTRONIC JOYSTICKS



Dual-axis

Used on 125T, 150T, 180T, 230T, 180XT, 210XT

REF [147TA5965](#)



Dual-axis, 4-way

Used on 105T, 125T, 150ZX

REF [164TA9756](#)



- CAN bus output J1939
- Address 0 x 34
- Circle axes
- Left-hand sided

Used on 260XTD

REF [147TA5970](#)



- CAN bus output J1939
- Address 0 x 33
- Circle axes
- Right-hand sided

Used on 260XTD

REF [147TA5968](#)



Left-hand sided, dual-axis

Used on 260XT

REF [147TA5969](#)



- Circle axis xy
- Analog output
- For control panel on the right side

Used on 205RXT, 240RXT

REF [147TA5966](#)



Right-hand side, dual-axis

Used on 135T, 150T, 180T, 230T, 160XT, 180XT, 210XT, 205RXT, 240RXT

REF [147TA5967](#)

# USED ON DINOLIFT



## PRINTED CIRCUIT BOARDS



Circuit board

Used on 180XT, 210XT



Processor card

Used on 180XT, 210XT



Timer card

Used on 135T, 150T, 180T, 160XT, 180XT, 210XT

Although these electronic cards may resemble the one fitted on your mobile elevating work platform there can be a big difference. Therefore we always ask you to supply us with part number or full vehicle details before ordering a similar unit.

This is just a small selection of our electronic boards. For all other types, please feel free to call us!

CONTROLLERS & PRINTED CIRCUIT BOARDS

## CONTROL CARD



Used on 125T, 135T, 150T, 180T, 230T, 160XT, 180XT, 210XT

REF [147TA6038](#)

# USED ON DINOLIFT



## ELECTRICAL PARTS

### POWER SUPPLY



- Minimum voltage: 115 V
- Type of voltage: AC
- Outgoing voltage: 13,7 V
- Number of terminals: 10

Used on 105T, 135T, 230T, 150T, 180T, 160XT, 180XT, 210XT

REF [147TA5924](#)

### BUTTON



- Diameter: 22 mm
- Length: 30 mm

Used on 135T, 150T, 180T, 230T, 160XT, 180XT, 210XT, 205RXT, 240RXT

REF [147TA6097](#)

### BATTERY CHARGER



- Input: 230 VAC, 50/60 Hz
- Output 12 VDC, 4 A
- Dimensions: 110 x 78 mm

Used on 135T, 150T, 180T, 230T, 160XT, 180XT, 210XT, 260XT, 205RXT, 240 RXT

REF [147TA6007](#)

### CABLE AND CONNECTOR



- Cable type: cables < 6 mm<sup>2</sup>
- Type of loom: multiple cables
- Total length of the cables: 10 m
- Number of plugs: 1

REF [147TA5989](#)

### CONDENSERS



- Capacity: 4700 µF
- Tolerance: 20%
- Voltage: 40 V

Used on 105T, 125T, 150T, 180T, 230T, 260XT, 205RXT, 240RXT, 150ZX

REF [147TA6090](#)



- Capacity: 30 µF
- Tolerance: ± 5%
- Voltage: 400/450 VAC
- Frequency: 50 Hz

REF [147TA5920](#)

# USED ON DINOLIFT



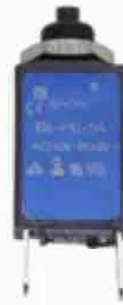
## AUTOMATIC FUSES



- Type of fuse: fault current safety switch
- Voltage: 230 VAC
- Current: 40 A

Used on 125T, 135T, 150T, 180T, 230T, 160XT, 180XT, 210XT, 260XT, 150ZX

REF [146TA8809](#)



- Type of fuse: fuse with push button
- Voltage: 240 VAC/48 VDC
- Current: 5 A

Used on 125T, 135T, 150T, 180T, 230T, 160XT, 180XT, 210XT, 260XT, 205RXT, 240RXT, 150ZX

REF [147TA5939](#)

## RELAYS



- Type of relay: contactor
- Voltage: 12 V
- Type of voltage: DC
- Current: 20 A

Used on 105T, 125T, 135T, 150T, 180T, 230T, 160XT, 180XT, 210XT, 260XT, 205RXT, 240RXT

REF [147TA5921](#)



- Type of relay: contactor
- Voltage: 12 V
- Type of voltage: DC
- Current: 20 A

Used on 105T, 125T, 135T, 150T, 180T, 160XT, 180XT, 210XT, 150ZX

REF [147TA6046](#)



- Type of relay: emergency stop relay
- Voltage: 12 V
- Type of voltage: DC
- Current: 6 A

Used on 105T, 125T, 135T, 150T, 180T, 230T, 160XT, 180XT, 210XT, 260XT, 205RXT, 240RXT, 150ZX

REF [147TA6050](#)



- Type of relay: mini-relay
- Voltage: 24 V
- Type of voltage: DC
- Current: 40/30 A

Used on 105T, 125T, 150T, 180T, 210XT, 160XT, 180XT, 205RXT, 240RXT, 150ZX

REF [147TA6049](#)



- Type of relay: printed circuit board
- Voltage: 12 V
- Type of voltage: DC
- Current: 12 A

Used on 135T, 150T, 180T, 230T, 260XT, 205RXT, 240RXT

REF [147TA6047](#)



- Type of relay: printed circuit board
- Voltage: 12 V
- Type of voltage: DC
- Current: 12 A

Used on 135T, 150T, 180T, 230T, 160XT, 180XT, 210XT, 260XT, 205RXT, 240RXT

REF [147TA6048](#)

# USED ON DINOLIFT



## ELECTRICAL PARTS

### RELAY, HEAD



- Type of relay: mounting bracket
- Voltage: 250 V
- Current: 10 A

Used on 260XT

**REF [147TA6052](#)**

### HEAT-SHRINK TUBING



- Length: 1020 mm
- Width: 84 mm

Used on 125T, 135T, 150T, 180T, 230T, 160XT, 180XT, 210XT, 260XT, 205RXT, 240RXT, 150ZX

**REF [147TA5940](#)**

### SIGNAL LAMPS



- Length: 46 mm
- Built-in diameter: 14 mm

Used on 125T, 135T, 150T, 180T, 230T, 160XT, 180XT, 210XT, 260XT, 150ZX

**REF [164TA9755](#)** - Red  
**REF [147TA5923](#)** - Green

### ELECTRIC MOTOR



- Minimum voltage: 220 V
- Current: 9,9 A
- Revolutions/minute: 1400 rpm
- Power: 1,5 kW

Used on 105T, 180XT, 160XT, 210XT

**REF [147TA5937](#)**

### LINEAR ACTUATORS



Voltage: 12 VDC

Used on 125T, 135T, 150T, 230T, 160XT, 180XT, 210XT, 205RXT, 240RXT

**REF [147TA5902](#)**



Voltage: 12 VDC

Used on 125T, 150T, 180T, 230T, 180XT, 210XT, 260XT, 150ZX

**REF [147TA6035](#)**

# USED ON DINOLIFT



SWITCHES

## ACTUATOR LIMIT SWITCHES



Head actuator (with roller lever)  
for limit switch series ZCK-D

Used on 105T, 125T, 135T, 150T,  
180T, 230T, 160XT, 180XT, 210XT,  
260XT, 205RXT, 240RXT, 150ZX

REF [146TA8798](#)



Momentary actuator for limit  
switch series ZCE

Used on 105T, 160XT, 180XT

REF [147TA6096](#)

## BATTERY DISCONNECT SWITCHES



- Voltage: 24 V
- Current: 100 A
- Quantity of poles: 1
- Auxiliary switch present: no

Used on 160XT

REF [147TA6068](#)



- Voltage: 24 V
- Current: 75 A
- Quantity of poles: 1
- Auxiliary switch present: no

Used on 180XT, 135T, 150ZX,  
205RXT, 150T, 160XT, 180T,  
240RXT, 125T, 260XT, 210XT

REF [147TA6069](#)

## CONTACT BLOCKS



- Voltage: 240 VAC/125 VDC
- Current: 0,55 A
- Number of NO contacts: 1
- Number of NC contacts: 0

Used on 105T, 125T, 135T,  
150T, 180T, 230T, 160XT, 180XT,  
205RXT, 240RXT, 210XT, 260XT,  
150ZX

REF [146TA8810](#)



- Voltage: 600 VAC
- Current: 10 A
- Number of NO contacts: 0
- Number of NC contacts: 1

Used on 180XT, 135T, 150ZX,  
230T, 150T, 160XT, 180T, 205RXT,  
240RXT, 125T, 260XT, 105T,  
210XT

REF [147TA6064](#)



- Voltage: 250 V
- Current: 10 A
- Number of NO contacts: 1
- Number of NC contacts: 1

Used on 105T, 125T, 150ZX

REF [147TA6067](#)

# USED ON DINOLIFT



SWITCHES

## RUBBER COVER

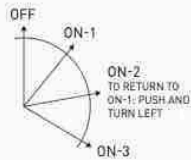


Diameter: 16 mm

Used on 180XT, 135T, 230T, 150T, 160XT, 180T, 205RXT, 240RXT, 125T, 260XT, 210XT, 150ZX

REF [147TA6099](#)

## IGNITION SWITCH



- Number of connections: 12
- Number of positions: 4
- Built-in diameter: 22 mm
- Total length: 86 mm

Used on 180XT, 135T, 150ZX, 230T, 150T, 160XT, 180T, 125T, 260XT, 105T, 210XT

REF [147TA6006](#)

### Spare part key



Used on 125T, 150T, 180T, 180XT, 210XT, 150ZX

REF [147TA6091](#)

## INCHING SWITCH



- Number of connections: 3
- Number of CO contacts: 1
- Number of connection holes: 2
- Current: 3 A

Used on 135T, 150T, 180T, 230T, 160XT, 180XT, 210XT

REF [147TA6071](#)

## LEVER SWITCH



- Positions: on-off-on
- Number of connections: 6
- Voltage: 250 V
- Current: 10 A

Used on 180XT, 135T, 150ZX, 230T, 150T, 160XT, 180T, 205RXT, 240RXT, 125T, 260XT, 105T, 210XT

REF [146TA8814](#)



# USED ON DINOLIFT



SWITCHES

## LIMIT SWITCHES



Head for limit switch series ZCKD (steel)

Used on 125T, 135T, 150T, 180T, 230T, 160XT, 180XT, 210XT, 260XT, 205RXT, 240RXT, 150ZX

REF [146TA8800](#)



- Number of NO contacts: 0
- Number of NC contacts: 2
- Current: 1,5 A

Used on 105T, 125T, 135T, 150T, 180T, 230T, 160XT, 180XT, 210XT, 260XT, 150ZX

REF [146TA8808](#)



- Number of NO contacts: 0
- Number of NC contacts: 2
- Current: 1,5 A

Used on 105T, 160XT, 180XT

REF [147TA6065](#)



- Number of NO contacts: 1
- Number of NC contacts: 1
- Current: 3 A

Used on 180XT, 135T, 240RXT, 210XT, 150ZX, 205RXT, 230T, 150T, 160XT, 180T, 125T, 260XT, 105T

REF [146TA8802](#)



- Number of NO contacts: 1
- Number of NC contacts: 1
- Current: 3 A

Used on 135T, 150T, 180T, 230T, 160XT, 180XT, 210XT, 260XT, 205RXT, 240RXT, 150ZX

REF [146TA8801](#)

## TURN SWITCH



- Number of positions: 2 x 90°
- Built-in diameter: 22 mm

Used on 180XT, 210XT

REF [147TA6100](#)

# USED ON DINOLIFT



## SENSORS

### HIT BLOCK STOP



Diameter: 43 mm

Used on 125T, 135T, 150T, 180T, 230T, 160XT, 180XT, 210XT, 260XT, 205RXT, 240RXT, 150ZX

**REF [147TA6084](#)**

### CIRCULAR BUBBLE LEVEL



- Diameter: 43 mm
- Height: 11 mm
- Sensitivity: 35 minutes per mm<sup>2</sup>

Used on 105T, 125T, 135T, 150T, 180T, 160XT, 180XT, 210XT, 150ZX

**REF [147TA6085](#)**

### TILT SENSOR



Dimensions: 95 x 90 mm

Used on 125T, 135T, 150T, 180T, 160XT, 180XT, 210XT

**REF [147TA6083](#)**

# USED ON DINOLIFT



## HOUR METER



- Voltage: 12-48 VDC
- Width: 28 mm
- Length: 32 mm
- Number of digits: 6

Used on 125T, 135T, 150T, 180T,  
230T, 160XT, 180XT, 210XT,  
260XT, 150ZX

**REF [147TA6029](#)**

# USED ON DINOLIFT

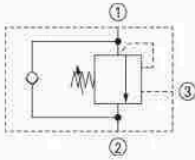


HYDRAULIC PARTS

## CARTRIDGE VALVES



- Thread: M20 x 1,5 mm
- Length: 91 mm

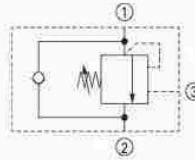


Used on 135T, 230T, 160XT, 180XT, 210XT, 260XT, 205RXT, 240RXT

**REF [147TA6123](#)**



- Thread: M20 x 1,5 mm
- Length: 87 mm



Used on 105T, 125T, 135T, 150T, 180T, 230T, 160XT, 180XT, 210XT, 260XT, 205RXT, 240RXT, 180XTB, 150ZX

**REF [147TA6117](#)**

## CETOP VALVE



- Voltage: 12 VDC
- Length: 240 mm

Used on 160XT, 180XT, 210XT

**REF [164TA9758](#)**

## COUPLINGS



- Height: 12 mm
- Diameter: 16 mm

**REF [147TA6026](#)**



- Height: 12 mm
- Outer diameter: 44 mm
- Inner diameter: 24 mm

Used on 105T, 205RXT

**REF [147TA6022](#)**



Height: 30,4 mm

Used on 205RXT, 240RXT

**REF [147TA6027](#)**

# USED ON DINOLIFT



## HYDRAULIC MOTORS



- Thread connections: 1/2" BSP
- Total length: 249 mm

Used on 125T, 135T, 150T, 160XT, 180T, 150ZX

**REF [147TA5958](#)**



- Thread connections: 1/2" BSP
- Total length: 256 mm

Used on 180XT, 210XT

**REF [147TA5957](#)**



- Thread connections: 3/4" BSP
- Total length: 335 mm

Used on 260XT

**REF [147TA5960](#)**



- Thread connections: 3/8" BSP
- Total length: 150 mm

Used on 105T, 125T, 135T, 150T, 180T, 230T, 160XT, 180XT, 210XT, 260XT, 205RXT, 240RXT, 150ZX

**REF [147TA5959](#)**

## HYDRAULIC PUMPS



- Total length of the pump: 118 mm
- Neck diameter: 30 mm
- Direction of rotation: CCW
- Material of the housing: aluminium

Used on 135T, 150T, 180T

**REF [147TA5961](#)**



- Total length of the pump: 96,6 mm
- Neck diameter: 32 mm
- Direction of rotation: CCW
- Material of the housing: aluminium

Used on 160XT, 180XT, 210XT

**REF [147TA5962](#)**

## USED ON DINOLIFT



ENGINE PARTS

## ALTERNATOR



- Voltage: 12 V
- Centre distance: 150 mm
- Mounting hole diameter: 10,25 mm
- Type of thread: M8
- With internal cooling
- With regulator

**REF [147TA5907](#)**

# USED ON DINOLIFT



## PLATFORM SUPPORT



- Number of holes: 11
- Material: metal

Used on 125T, 135T, 150T, 180T, 230T, 160XT, 180XT, 210XT

**REF [147TA6101](#)**

## LOCK CATCH



- Biggest inner length: 62 mm
- Biggest inner diameter of the bottom: 55 mm
- Total height: 125 mm

Used on 160XT

**REF [164TA9760](#)**

## CAPSULE



- Length: 46,5 mm
- Diameter: 25,5 mm

**REF [147TA5979](#)**

## CAPSULE HINGE



Dimensions: 48 x 43 mm

Used on 230T, 160XT, 260XT, 205RXT, 240RXT

**REF [147TA5977](#)**

## CABLE GUIDE



- Outside dimensions: 53 x 35 mm
- Inside dimensions: 38 x 25 mm
- Material: plastic

Used on 180T, 230T, 260XT

**REF [147TA5981](#)**

## COVER



- Length: 330 mm
- Material: aluminium

Used on 125T, 150T, 180T, 180XT, 210XT

**REF [147TA5932](#)**

## COVER FOR CYLINDER



- Length: 462 mm
- Width: 85 mm
- Height: 20 mm

Used on 125T, 135T, 150T, 180T, 230T, 160XT, 180XT, 260XT

**REF [147TA5930](#)**

# USED ON DINOLIFT



## BODY & CHASSIS PARTS

### WEAR BLOCKS



- Length: 120 mm
- Material: plastic

Used on 135T, 150T, 180T, 230T, 160XT, 180XT, 210XT, 260XT, 205RXT, 240RXT

**REF [147TA5904](#)**



- Length: 20 mm
- Outer diameter: 40 mm
- Material: plastic

Used on 125T, 135T, 150T, 180T, 230T, 160XT, 180XT, 210XT, 260XT, 205RXT, 240RXT

**REF [147TA5941](#)**



- Length: 70 mm
- Material: plastic

Used on 125T, 135T, 150T, 180T, 230T, 160XT, 180XT, 210XT, 260XT, 205RXT, 240RXT

**REF [147TA5903](#)**

### DOOR HANDLES



Length: 147 mm

Used on 160XT

**REF [147TA5973](#)**



- Length: 54 mm
- Width: 21 mm

Used on 105T, 125T, 135T, 150T, 180T, 230T, 180XT, 210XT, 260XT, 150ZX

**REF [147TA5974](#)**



Handle [key locked] for control panel

Used on 105T, 125T, 135T, 150T, 180T, 230T, 180XT, 210XT, 260XT, 150ZX

**REF [147TA5976](#)**



Length: 40 mm

Used on 160XT, 180XT, 210XT

**REF [164TA9759](#)**



# USED ON DINOLIFT



## TENSION ROD END ASSEMBLY



- Type of rod end: without groove
- Length: 44 mm
- Thread: M12, RH thread

Used on 125T, 135T, 150T, 180T, 230T, 160XT, 180XT, 210XT, 205RXT, 240RXT

**REF [147TA6060](#)**

## HOLDER FOR PANEL, LH



- Number of holes: 8
- Material: aluminium

Used on 160XT

**REF [147TA6103](#)**

## OUTRIGGER



- Length: 1590 mm
- Width: 110 mm
- Height: 258 mm

**REF [147TA6113](#)**

## HOLDER FOR PANEL, RH



- Number of holes: 8
- Material: aluminium

Used on 160XT

**REF [147TA6102](#)**

## CONTROL LEVER KNOB



- Diameter: 32 mm
- Thread: M10 x 1,5 mm

Used on 125T, 135T, 150T, 180T, 160XT, 150ZX

**REF [147TA6020](#)**

## LADDER



- Height: 560 mm
- Width: 390 mm

Used on 135T, 150T, 180T, 230T, 160XT, 180XT, 210XT, 205RXT, 240RXT

**REF [147TA5917](#)**

## COVER SPACER



- Length: 44,5 mm
- Width: 20 mm
- Height: 8 mm
- Dimension biggest hole: 9 mm
- Dimension smallest hole: 7 mm
- Material: aluminium

Used on 125T, 135T, 150T, 180T, 230T, 160XT, 180XT, 260XT, 210XT, 205RXT, 240RXT, 150ZX

**REF [147TA5946](#)**

# USED ON DINOLIFT



BODY & CHASSIS PARTS

## MARKER LIGHTS



- Length: 113 mm
- Width: 46 mm
- Height: 30 mm
- Bulb included

Used on 105T, 125T, 135T, 150T, 180T, 230T, 160XT, 180XT, 210XT, 260XT, 150ZX

**REF 147TA6014**

**E-approved**



- Length: 113,5 mm
- Width: 45 mm
- Height: 30 mm
- Bulb included

Used on 105T, 125T, 135T, 180XT, 150T, 180T, 230T, 160XT, 210XT, 230T, 260XT, 150ZX

**REF 147TA6015**

**E-approved**

## REAR LIGHTS



- Length: 100 mm
- Width: 94 mm
- Height: 42 mm
- Voltage: 12-24 V
- Bulb not included

Used on 105T, 125T, 150T, 180T, 180XT, 210XT, 150ZX

**REF 147TA6013** - Rear light  
**REF 151TA5944** - Bulb 12 V (1x)  
**REF 103TA4421** - Bulb 12 V (1x)

**E-approved**



- Length: 237 mm
- Width: 137 mm
- Height: 66 mm
- Voltage: 12 V
- Bulb included

Used on 125T, 135T, 150T, 180T, 230T, 160XT, 180XT, 210XT, 260XT, 150ZX

**REF 147TA6012**

**E-approved**



- Length: 371 mm
- Width: 130 mm
- Height: 118 mm
- Voltage: 12 V
- Bulb included

Used on 160XT

**REF 147TA6011**

**E-approved**



- Length: 371 mm
- Width: 130 mm
- Height: 118 mm
- Voltage: 12 V
- Bulb included

Used on 160XT

**REF 147TA6016**

**E-approved**

# USED ON DINOLIFT



## REAR LIGHT BAR MOUNTING BRACKETS



- Number of holes: 32
- Material: aluminium

Used on 125T, 135T, 150T, 180T, 230T, 160XT, 180XT, 210XT, 150ZX

**REF [147TA5919](#)**



- Number of holes: 42
- Material: aluminium

Used on 160XT, 180XT

**REF [147TA6107](#)**



- Number of holes: 7
- Material: metal
- LH

Used on 125T, 135T, 160XT, 180XT

**REF [147TA6108](#)**



- Number of holes: 7
- Material: metal
- RH

Used on 125T, 135T, 160XT, 180XT

**REF [147TA6109](#)**

## SUPPORTS



- Number of holes: 1
- Material: aluminium

**REF [147TA6110](#)**

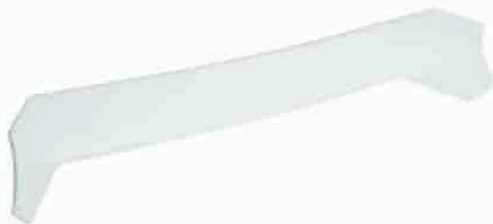


- Number of holes: 2
- Material: metal

Used on 125T, 150T, 180T, 150ZX

**REF [147TA6104](#)**

## PLEXIGLASS COVER



- Length: 891,22 mm
- Width: 158,5 mm
- Material: polycarbonate

Used on 135T, 150T, 180T, 230T, 160XT, 180XT, 210XT, 205RXT, 240RXT

**REF [147TA5928](#)**

# USED ON DINOLIFT



BODY & CHASSIS PARTS

## RUBBER BUMPER



- Type: pad with 1 x outer thread
- Diameter: 31,5 mm
- Thread: M8
- Overall length: 29,6 mm

Used on 125T, 135T, 150T, 180T, 230T, 260XT, 150ZX

**REF [147TA6089](#)**

## CHAIN LINK



- Length: 44 mm
- Width: 34 mm

Used on 125T, 135T, 150T, 180T, 230T, 160XT, 180XT, 210XT, 260XT, 150ZX

**REF [147TA5985](#)**

## WORM GEARS



Type: MI80BFP614

Used on 105T

**REF [147TA6044](#)**



Type: MI80V/FP15

Used on 125T, 135T, 150T, 180T, 230T, 160XT, 180XT, 210XT, 260XT, 150ZX

**REF [147TA6043](#)**

## USED ON DINOLIFT



### BONNET CATCH



- Length: 125 mm
- Width: 36,5 mm

Used on 125T, 150T, 180T, 230T, 205RXT, 150ZX

REF [147TA5972](#)

### GAS SPRINGS



- Type of gas spring: push type
- Centre distance: 595 mm

REF [164TA9761](#)



- Type of gas spring: push type
- Force: 150 N
- Centre distance: 265 mm

Used on 105T, 125T, 135T, 150T, 180T, 230T, 160XT, 180XT, 210XT, 260XT, 205RXT, 240RXT

REF [147TA5943](#)



- Type of gas spring: push type
- Force: 300 N
- Centre distance: 248 mm

Used on 125T, 135T, 150T, 180T, 160XT, 180XT, 205RXT, 240RXT, 150ZX

REF [147TA5942](#)

## USED ON DINOLIFT



## DECALS

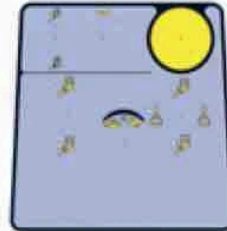
## DECALS

LIFT THE FRONT  
WHEEL TO ITS UPMOST  
POSITION FOR  
TRANSPORTATION !

DEN STÜTZRAD FÜR DEN  
TRANSPORT IN OBERSTE  
POSITION AUFHEBEN !

- Length: 119,5 mm
- Height: 20 mm

REF [138TA1812](#)



- Length: 196 mm
- Height: 196 mm

REF [147TA6003](#)



- Length: 317 mm
- Height: 173 mm

Used on 135T, 150T, 180T, 160XT,  
180XT, 210XT

REF [147TA5993](#)



- Length: 320 mm
- Height: 175 mm

Used on 135T, 150T, 180T, 160XT,  
180XT, 210XT

REF [138TA2225](#)

250 kPa  
2,5 bar  
35 psi

- Length: 65 mm
- Height: 28 mm

Used on 160XT

REF [138TA1818](#)



- Length: 69 mm
- Height: 59 mm

Used on 160XT

REF [138TA1810](#)

## USED ON DINOLIFT



## WHEELS



- Nose wheel: Ø 60 mm
- Dimensions: 260 x 85 mm
- Double pneumatic tyres heavy-duty

Used on 125T, 135T, 150T, 180T, 230T, 160XT, 180XT, 210XT, 260XT, 150ZX

REF [151TA3799](#)



- Type: pneumatic tyre
- Dimensions: 290 x 20 mm
- Ply rating: 4.00x4-4PR

Used on 125T, 135T, 180T, 160XT, 180XT, 210XT, 260XT, 150ZX

REF [139TA9487](#)

WHEELS &amp; TYRES

## TOWBAR COUPLING



Used on 125T, 135T, 150T, 180T, 160XT

REF [147TA5975](#)

## USED ON DINOLIFT



HARDWARE

## PINS



- Diameter: 12 mm
- Total length: 60 mm
- Centre distance: 53,4 mm
- Material: steel

Used on 125T, 135T, 150T,  
180T, 230T, 160XT, 180XT,  
210XT, 205RXT, 240RXT, 150ZX,  
DH2000, DH2500, DHS2000,  
ERGO800B-BT-H-HT, GX1200

**REF [147TA5909](#)**



- Diameter: 16 mm
- Total length: 51 mm
- Internal thread: M8
- Material: steel

Used on 135T, 150T, 230T, 160XT,  
180XT, 210XT, 205RXT, 240RXT

**REF [147TA5913](#)**



- Diameter: 20 mm
- Total length: 60 mm
- Internal thread: 1/8" BSP
- Material: steel

Used on 125T, 135T, 150T, 180T,  
230T, 160XT, 180XT, 210XT,  
260XT, 240RXT, 150ZX

**REF [147TA5912](#)**