

# USED ON GENIE



HYDRAULIC PARTS

## ACCUMULATOR KIT



- Volume: 0,08 l
- Permissible operating pressure: 260 bar
- Oil port: 9/16" UNF
- Precharge pressure: 12,4 bar

Used on GS-2032, GS-1530 from serial n° 00001 to 75999, GS-2046

**REF [161TA1851](#)**

## ACCUMULATORS



- Volume: 0,08 l
- Permissible operating pressure: 260 bar
- Oil port: 9/16" UNF
- Precharge pressure: 34,5 bar

Used on S-100, S-120, Z-80/60

**REF [161TA5037](#)**



- Volume: 0,74 l
- Permissible operating pressure: 260 bar
- Oil port: 5/16"
- Precharge pressure: 12,4 bar

Used on GS1530 to GS 4047

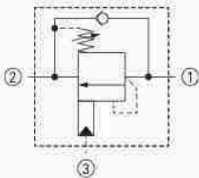
**REF [128TA3222](#)**

## CARTRIDGE VALVES



- Width across flats: 22 mm
- Length: 86,5 mm
- Diameter nose: 19 mm

Used on Z-45/25IC from serial n° 9996 to 99999, Z-45/25, Z-51/30J, Z-45/25DC from serial n° 9996 to 99999, Z-45/25J, Z-33/18, Z-62/40

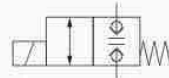


**REF [160TA9743](#)**



- Width across flats: 22 mm
- Length: 98,5 mm
- Diameter nose: 12,7 mm

Used on TMZ-34/19, GS-3390, GS-2668 RT, GS-3384, GS-84, TZ-50, TZ-34/20, GS-2669BE, GS-2668RT, GS-2669DC, GS-2668

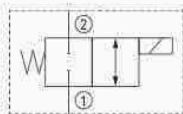


**REF [131TA9074](#)**



- Width across flats: 22,2 mm
- Length: 90,9 mm
- Diameter nose: 12,8 mm

Used on Z-45/25, Z-45/25J, GS-3390, GS-84, Z-45/25DC from serial n° 9996 to 99999, GS-2668 RT, S-100, S-120, GTH-844, Z-80/60, GS-2668RT, GTH-636, GS-2668, GS-3384

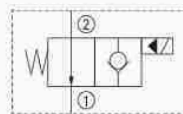


**REF [160TA9885](#)**



- Width across flats: 22,4 mm
- Length: 103,9 mm
- Diameter nose: 13 mm

Used on Z-45/25, CWP-8S, IWP SUPER SERIES, Z-45/25DC from serial n° 9996 to 99999, Z-45/25J, CWP SUPER SERIES, GS-4047



**REF [139TA5137](#)**

# USED ON GENIE

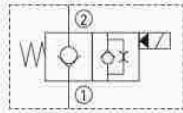


HYDRAULIC PARTS

## CARTRIDGE VALVES



- Width across flats: 22,4 mm
- Length: 110,2 mm
- Diameter: 10,9 mm

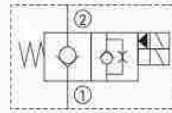


Used on GS-30, DPL-25S, GS-1530 from serial n° 00001 to 75999, AWP SUPER SERIES, GS-2646, GS-2032, GS-2046, GS-2646 AV

REF [161TA1921](#)



- Width across flats: 22,4 mm
- Length: 110,2 mm
- Diameter nose: 10,9 mm

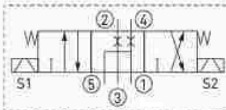


Used on GS-2668 RT, GS-2668 DC, GS-2668DC, GS-2669 DC, GS-2669BE, GS-2668RT, GS-2669DC, GS-2668

REF [160TA8335](#)



- Width across flats: 25,4 mm
- Length: 224,3 mm
- Diameter nose: 15,9 mm

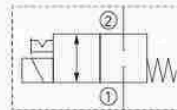


Used on GS-30

REF [161TA1762](#)



- Width across flats: 25,4 mm
- Length: 110,5 mm
- Diameter nose: 16 mm

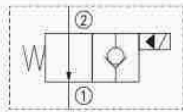


Used on GS-2668 DC, GS-2668 RT, GS-3390, GS-1530 from serial n° 00001 to 75999, GS-2668DC, GS-2668RT, GS-2668

REF [161TA3713](#)



- Width across flats: 25,4 mm
- Length: 122,2 mm
- Diameter nose: 15,8 mm

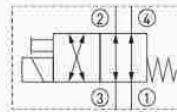


Used on GS-2668 DC, GS-2668 RT, GS-3390, GS-84, GS-2668DC, GS-2668RT, GS-2668, GS-3384

REF [160TA6370](#)



- Width across flats: 25,4 mm
- Length: 122,45 mm
- Diameter nose: 16 mm

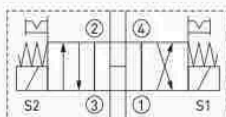


Used on GS-2046, GS-1530 from serial n° 00001 to 75999, GS-30, GS-2668 DC, GR-12, GS-2668 RT, GS-2032, GRC-12, QS-12R, GS-2668DC, GS-2668RT, GS-4047, GS-2668, GS-2646 AV

REF [161TA1793](#)



- Width across flats: 25,4 mm
- Length: 208,2 mm
- Diameter nose: 15,9 mm

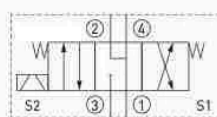


Used on GS-2046, GS-1530 from serial n° 00001 to 75999, GR-12, GS-2032, GS-30, GS-2668 RT, GRC-12, QS-12R, GS-2668RT, GS-2668

REF [160TA8829](#)



- Width across flats: 25,4 mm
- Length: 208,6 mm
- Diameter nose: 15,9 mm



Used on S-100, S-120, GTH-1048, S-3800, GTH-1056, SX-180

REF [126TA5608](#)

# USED ON GENIE

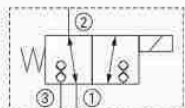


HYDRAULIC PARTS

## CARTRIDGE VALVES



- Width across flats: 31,8 mm
- Length: 130,2 mm
- Diameter nose: 16 mm

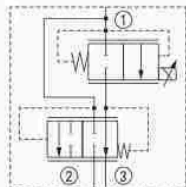


Used on Z-45/25, Z-45/25DC from serial n° 9996 to 99999, Z-45/25J

**REF 160TA9871**



- Width across flats: 31,8 mm
- Length: 156,2 mm
- Diameter nose: 20,4 mm

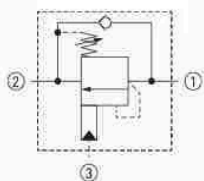


Used on GS-3390, GS-3384, GS-84

**REF 161TA1080**



- Width across flats: 22,2 mm
- Length: 85 mm
- Diameter nose: 19 mm

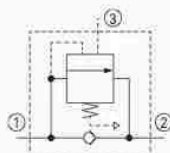


Used on Z-45/25IC from serial n° 9996 to 99999, Z-40/23N, Z-45/25, TZ-50, Z-135/70, Z-51/30J, Z-45/25DC from serial n° 9996 to 99999, Z-45/25J, ZX-135/70, Z-40/23 N

**REF 140TA9735**



- Width across flats: 22,2 mm
- Length: 105 mm
- Diameter nose: 15 mm



Used on S40/45, S80/85, S60/65(X)(XC)(HC)(TRAX), Z60/34

**REF 139TA1852**

## CETOP VALVES



Voltage: 12 VDC

Used on S-40, S-80, Z-60/34, S-60

**REF 161TA1105**



Voltage: 24 VDC

Used on S-100, GS-3390, S-120, GS-3384, GS-84, GTH-1048, S-3800, GTH-1056, GTH-844, GTH-636

**REF 160TA7931**



# USED ON GENIE



## HYDRAULIC PARTS

### PRESSURE VALVES (FLOW)



- Check valve, pilot operated
- Thread: M16 x 1,5 mm
- Length: 63 mm

Used on GS-2046, Z-25/8, GS-1530 from serial n° 00001 to 75999, GS-2668 DC, GS-2668 RT, GS-2032, GS-2668DC, GS-2668RT

REF [160TA9529](#)



- Check valve
- Thread: 7/8" UNF
- Length: 100 mm

Used on GS-2046, S-100, Z-45/25IC from serial n° 9996 to 99999, GS-1530 from serial n° 00001 to 75999, GS-2668 DC, GS-2668 RT, GS-3390, GS-2032, S-120, GS-3384, Z-51/30J, GS-84, S-3800, Z-45/25, GS-2668DC, GS-2668RT, GS-2668

REF [160TA8258](#)



- Flow divider
- Thread: M36 x 2 mm
- Length: 117 mm

Used on Z-135/70, ZX-135/70

REF [160TA8002](#)



- Flow divider
- Thread: 1 5/16" UNF
- Length: 117 mm

Used on S-60, S-80, Z-60/34, S-40, Z-45/22, Z-45/25IC from serial n° 9996 to 99999, Z-45/25, S-100, S-120, Z-80/60, Z-51/30J, S-3800, S-80X

REF [161TA1623](#)



- Flow regulator valve
- Thread: 3/4" UNF
- Length: 47,6 mm

Used on Z-45/25IC from serial n° 9996 to 99999, Z-45/25, Z-135/70, Z-51/30J, Z-45/25DC from serial n° 9996 to 99999, Z-45/25J, ZX-135/70

REF [160TA8861](#)



- Flow regulator valve
- Thread: 3/4" UNF
- Length: 47,6 mm

Used on Z-135/70, S-100, Z-45/25IC from serial n° 9996 to 99999, S-120, Z-51/30J, GTH-1048, S-3800, GTH-1056, Z-45/25, ZX-135/70, SX-180

REF [160TA9404](#)



- Counterbalance valve 2500 psi
- Thread: M36 x 2 mm
- Length: 140,5 mm

Used on Z-135/70, ZX-135/70

REF [160TA6793](#)



- Counterbalance valve 2900 psi
- Thread: M20 x 1,5 mm
- Length: 106 mm

Used on GS-3390, GS-3384, GS-84

REF [160TA9906](#)



## USED ON GENIE



## PRESSURE VALVES (FLOW)



- Counterbalance valve 3000 psi
- Thread: M20 x 1,5 mm
- Length: 86,5 mm

Used on S-60, TZ-34/20,  
Z-135/70, Z-60/34, ZX-135/70,  
TZ-50

REF [161TA1107](#)



- Counterbalance valve 3200 psi
- Thread: M20 x 1,5 mm
- Length: 85 mm

Used on Z-30/20N, Z-34/22N,  
Z-34/22IC, S-60, Z-34/22 IC,  
Z34/22 DC

REF [160TA6306](#)



- Counterbalance valve 3300 psi
- Thread: SLW 22 mm
- Length: 65,8 mm

Used on S-100, Z-34/22N,  
Z-60/34, Z-30/20N, Z-45/25,  
Z-45/25IC from serial n°  
9996 to 99999, S-80, S-40,  
Z-40/23N, Z-34/22IC, TZ-50,  
S-60, S-120, Z-80/60, Z-135/70,  
Z-51/30J, Z-34/22, S-3800,  
Z-45/25J, Z-34/22 IC, Z34/22 DC,  
ZX-135/70, S-80X, Z-40/23 N,  
Z-62/40, SX-1

REF [161TA2080](#)



- Counterbalance valve 3500 psi
- Thread: M20 x 1,5 mm
- Length: 85,3 mm

Used on S-60, S-120, S-100,  
Z-80/60, Z-135/70, S-3800,  
ZX-135/70, Z-62/40, SX-180

REF [160TA9046](#)



- Counterbalance valve 3800 psi
- Thread: M20 x 1,5 mm
- Length: 85 mm

Used on Z-45/25IC from  
serial n° 9996 to 99999,  
Z-45/25, Z-51/30J, Z-45/25DC  
from serial n° 9996 to 99999,  
Z-45/25J, Z-40/23N, Z-80/60,  
Z-40/23 N, Z-33/18

REF [161TA1963](#)



- Valve differential sensing  
150 psi
- Thread: 7/8" UNF
- Length: 65 mm

Used on Z-60/34, S-60, S-40,  
S-80, Z-45/25IC from serial n°  
9996 to 99999, Z-45/22, Z-80/60,  
Z-135/70, Z-45/25, Z-45/22IC,  
ZX-135/70

REF [160TA9348](#)



- Relief valve 3200 psi
- Thread: 3/4" UNF
- Length: 84,9 mm

Used on Z-45/25IC from  
serial n° 9996 to 99999,  
Z-45/25, Z-51/30J, Z-45/25DC  
from serial n° 9996 to 99999,  
Z-45/25J

REF [160TA9539](#)



- Relief valve 3700 psi
- Thread: 3/4" UNF
- Length: 84,7 mm

Used on GS-30, GR-12, GS-1530  
from serial n° 00001 to 75999,  
GS-2046, GS-2032, GRC-12,  
QS-12R, GS-4047, GS-2646 AV

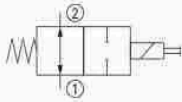
REF [160TA9878](#)

# USED ON GENIE



HYDRAULIC PARTS

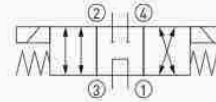
## ELECTRIC CARTRIDGES



- Voltage: 10 VDC
- Thread: 3/4" UNF
- Diameter nose: 12,7 mm

Used on Z-60/34, S-40, S-80

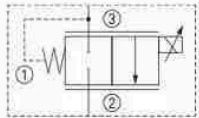
**REF 160TA9366**



- Voltage: 24 VDC
- Thread: 3/4" UNF
- Diameter nose: 12,7 – 14,2 – 15,75 mm

Used on Z-80/60, Z-135/70

**REF 160TA7912**

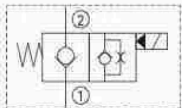


- Voltage: 24 VDC
- Thread: 7/8" UNF
- Diameter nose: 16 mm

Used on Z-45/25, Z-45/25DC from serial n° 9996 to 99999, Z-45/25J

**REF 160TA8656**

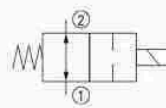
## CARTRIDGES WITH COIL



- Voltage 20 V
- AC/DC: DC
- Resistance: 25,4 Ω
- Diameter 1: 33,5 mm
- Diameter 2: 13 mm
- Length: 50,8 mm

Used on GS2032/3246, GS1530/1532/1930, GS30/32/46, GS1530/1930, GS2646/35AV

**REF 139TA1857**



- Voltage: 10 V
- AC/DC: DC
- Resistance: 6,3 Ω
- Diameter: 12,8 mm
- Length: 86 mm

Used on Z-60/34, S-40, S-80

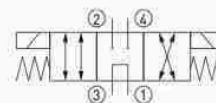
**REF 160TA9370**



- Voltage: 12 V
- AC/DC: DC
- Resistance: 5,4 Ω
- Diameter 1: 45 mm
- Diameter 2: 22 mm
- Length: 165 mm

Used on Z-135/70, ZX-135/70

**REF 160TA9372**



- Voltage: 20 V
- AC/DC: DC
- Resistance: 23,8 Ω
- Diameter: 13 mm
- Length: 144 mm

Used on Z-34/22N, Z-25/8, Z-30/20N, Z-34/22 BI-ENERGY, Z-34/22, Z-45/25 BI-ENERGY, Z34/22 DC

**REF 160TA9542**

# USED ON GENIE

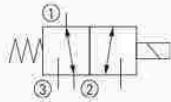


HYDRAULIC PARTS

## CARTRIDGES WITH COIL



- Voltage: 10 V
- AC/DC: DC
- Resistance: 6,3 Ω
- Diameter: 12,8 mm
- Length: 89,3 mm



Used on Z-45/25IC from serial n° 9996 to 99999, S-80, Z-80/60, Z-51/30J, S-40, Z-60/34, S-3800, Z-45/25

**REF 160TA9584**



- Voltage: 12 V
- AC/DC: DC
- Resistance: 5,4 Ω
- Diameter 1: 45 mm
- Diameter 2: 22 mm
- Length: 165 mm

Used on Z-135/70, ZX-135/70

**REF 160TA9883**



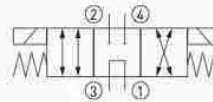
- Voltage: 12 V
- AC/DC: DC
- Resistance: 5,4 Ω
- Diameter 1: 45 mm
- Diameter 2: 22 mm
- Length: 165 mm

Used on Z-135/70, ZX-135/70, S-80X

**REF 161TA1083**



- Voltage: 10 V
- AC/DC: DC
- Resistance: 6,5 Ω
- Diameter: 13 mm
- Length: 190 mm



Used on Z-45/25IC from serial n° 9996 to 99999, Z-45/25

**REF 161TA1424**



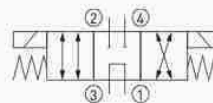
- Voltage: 12 V
- AC/DC: DC
- Resistance: 5,4 Ω
- Diameter 1: 45 mm
- Diameter 2: 22 mm
- Length: 146,5 mm

Used on S-60, Z-135/70, ZX-135/70, S-80X

**REF 161TA1426**



- Voltage: 10 V
- AC/DC: DC
- Resistance: 6,3 Ω
- Diameter: 12,8 mm
- Length: 144 mm

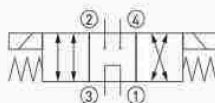


Used on Z-80/60, Z-60/34, S-80, Z-45/25IC from serial n° 9996 to 99999, S-60, S-40, Z-45/25

**REF 161TA1850**



- Voltage: 10 V
- AC/DC: DC
- Resistance: 6,5 Ω
- Diameter: 13 mm
- Length: 144 mm



Used on Z-34/22IC, Z-45/25IC from serial n° 9996 to 99999, Z-45/25, Z-34/22 IC

**REF 161TA1906**

Cartridges exist in a variety of dimensions and wiring diagrams. When placing an order, always provide the necessary info with regard to the wiring diagram, as cartridges may have identical dimensions yet be connected in different ways.

Diameter D1 is the nose of the cartridge. Diameter D2 is the diameter of the cartridge end on which the coil is mounted.



## USED ON GENIE



## HYDRAULIC PARTS

COILS							
	Voltage V	AC/DC	Resistance $\Omega$	Height mm	Diameter mm	Used on	REF
	10	DC	5,4	39,3	13	Z-60/34, S-80, ZX-135/70, S-80X, S-40, SX-180	<a href="#">161TA1334</a>
	10	DC	6,4	41,4	12,8	Z-60/34, S-80, S-40, Z-45/25IC from serial n° 9996 to 99999, S-60, Z-80/60, Z-51/30J, S-3800, Z-45/25	<a href="#">161TA2068</a>
	10	DC	6,3	52	16	Z-80/60, S-80, S-60, S-40, Z-135/70, Z-60/34, S-80X	<a href="#">161TA1802</a>
	10	DC	6,4	41,2	13	S-40, S-80, S-60, Z-45/25IC from serial n° 9996 to 99999, Z-45/25	<a href="#">131TA8098</a>
	10	DC	6,6	41	13,5	S-40, Z-60/34, S-80, S-60, Z-45/22, Z-45/22IC, GTH-644	<a href="#">161TA2066</a>
	10	DC	6,8	36,3	36,2	S-100, S-120, Z-60/34, Z-80/60, SX-180	<a href="#">161TA4661</a>
	12	DC	5,8	50	45	GS-3390, Z-45/25IC from serial n° 9996 to 99999, S-60, GS-3384, Z-51/30J, GS-84, Z-45/25	<a href="#">161TA1719</a>
	12	DC	6	51	45	GS-2668 DC, GS-2668 RT, GS-3390, GS-3384, GS-84, GTH-1048, GTH-1056, GS-2668DC, GR-12, GS-2668RT, GS-2668	<a href="#">131TA8291</a>
	12	DC	7,3	51,5	44	GS-2668 DC, GS-2668 RT, GS-3390, GS-3384, GS-2668DC, GS-2668RT	<a href="#">160TA8540</a>

## USED ON GENIE



COILS							
	Voltage V	AC/DC	Resistance $\Omega$	Height mm	Diameter mm	Used on	REF
	12	DC	7,6	50	47	GS-3390, GS-2668 RT, Z-135/70, GS-3384, GS-84, GTH-1048, S-120, S-100, GTH-1056, ZX-135/70, S-3800, GS-2668RT, SX-180, GS-2668	<a href="#">131TA8398</a>
	12	DC	7,7	51	43,6	S-100, S-120, S-3800	<a href="#">126TA4792</a>
	12	DC	9,2	36	36	GTH-1048, S-100, Z-45/25IC from serial n° 9996 to 99999, GS-3390, GS-2668 RT, Z-135/70, GS-84, Z-51/30J, S-120, S-60, S-40, GTH-1056, Z-45/25, ZX-135/70, S-3800, GTH-844, Z-60/34, Z-62/40, GS-2668RT, GTH-636, GS-2668, GS-3384	<a href="#">131TA8400</a>
	12	DC	9,2	37,4	13,5	GS-2668 RT, GS-2668RT, GS-2668	<a href="#">160TA6756</a>
	20	DC	19,4	51	43,6	GS-2046, GS-2032, GS-1530 from serial n° 00001 to 75999	<a href="#">131TA8239</a>
	20	DC	19,7	51	44	Z-45/25, GS-30, GR-12, GS-1530 from serial n° 00001 to 75999, Z-45/25DC from serial n° 9996 to 99999, GRC-12, QS-12R, Z-45/25J, GS-2032, GS-4047, GS-2646 AV	<a href="#">131TA8381</a>
	20	DC	23,8	41	13	Z-34/22N, Z-25/8, Z-30/20N, Z-45/22, Z-34/22 BI-ENERGY, Z-34/22, Z-45/25DC from serial n° 9996 to 99999, Z-45/22DC, Z-45/25 BI-ENERGY, Z34/22 DC	<a href="#">161TA1833</a>
	20	DC	24,2	37,4	13	GS-2668 DC, GS-2032, GS-1530 from serial n° 00001 to 75999, GS-30, GS-2046, GS-2669 DC, GS-2668DC, GR-8, GRC-12, GR-12, QS-12R, GS-2669BE, GS-2669DC	<a href="#">161TA2013</a>

HYDRAULIC PARTS

# USED ON GENIE



HYDRAULIC PARTS

## ROTARY HEAD



Used on Z-45/251C from serial n° 9996 to 99999, Z-34/22N, Z-40/23N, Z-30/20N, Z-45/25, Z-51/30J, Z34/22 DC, Z-60/34, GS-30, GS-2668 RT, S-60, Z-40/23 N, Z-33/18, Z-62/40, GS-2668RT, SX-180, GS-2668

REF [160TA7041](#)

## HYDRAULIC INTEGRATED CIRCUITS WITH CARTRIDGE



- Length: 89 mm
- Width: 76 mm

Used on Z-30/20N, Z-25/8, Z-40/23N, Z-34/221C, Z-45/25, Z-34/22N, Z-60/34, Z-34/22, Z-45/251C from serial n° 9996 to 99999, Z-45/25J, Z-34/22 IC, Z34/22 DC, TZ-50, Z-40/23 N

REF [160TA6480](#)



- Length: 88 mm
- Width: 75 mm

Used on S-100, Z-60/34, Z-45/25, S-80, S-40, Z-45/251C from serial n° 9996 to 99999, S-60, S-120, Z-80/60, Z-135/70, Z-51/30J, S-3800, Z-45/25J, ZX-135/70, S-80X, Z-62/40, SX-180

REF [161TA1437](#)

## HYDRAULIC BRAKES



- Kit of 2 pieces
- Diameter: 240 mm

Used on GS2032/3246, GS1530/1532/1930, GS30/32/46, GS1530/1930, GS2646/35AV

REF [139TA1884](#)



Diameter: 101,6 mm

Used on Z34/22(N/DC/BI-ENERGY)Z34/22N-Z34/22DC, Z30/20N(RJ)

REF [161TA2079](#)



# USED ON GENIE



HYDRAULIC PARTS

## BRAKE PARTS



Kit for Mico brake

Used on S-60, Z-60/34, S-40, Z-34/22IC, S-80, Z-34/22, Z-45/25IC from serial n° 9996 to 99999, Z-34/22G, Z-34/22 IC, Z-45/25

**REF [160TA6708](#)**



Kit for Ausco brake

Used on Z-34/22IC, GS-3390, Z-45/25IC from serial n° 9996 to 99999, Z-45/25, Z-34/22 IC

**REF [128TA2950](#)**



Lining kit

Used on Z-30/20N, Z-34/22N, Z-45/25, Z-45/25DC from serial n° 9996 to 99999, Z-45/25J

**REF [160TA6627](#)**

# USED ON GENIE



## HYDRAULIC PARTS

### HYDRAULIC CYLINDERS



- Steering cylinder
- Total measured length: 580 mm
- Diameter tube: 60,4 mm
- Diameter rod: 25 mm

Used on GS2669/3369/4069DC, GS2669/3369/4069R, S40/45, GS84/90, Z1/30J, Z45/25(J)

**REF [128TA3207](#)**



- Steering cylinder
- Total measured length: 980 mm
- Diameter tube: 73 mm
- Diameter rod: 45 mm
- Piston shaft stroke: 670 mm

Used on Z51/30J, Z45/25(J), Z45/25IC-Z45/25J IC, Z45/25(J/DC/BI-ENERGY), Z40/23N(RJ)

**REF [161TA1791](#)**



- Steering cylinder
- Total measured length: 308 mm
- Diameter tube: 60,7 mm
- Diameter rod: 19 mm
- Piston shaft stroke: 66 mm

Used on GS-2046, GS-2032, GS-1530 from serial n° 00001 to 75999

**REF [160TA7983](#)**



- Tilt cylinder or double-acting
- Total measured length: 820 mm
- Diameter tube: 86 mm
- Diameter rod: 40 mm

Used on Z-34/22N, Z-34/22IC, Z-30/20N, Z-34/22, Z-34/22 IC, Z-45/25 BI-ENERGY, Z34/22 DC

**REF [160TA8493](#)**



- Steering cylinder
- Total measured length: 465 mm
- Diameter tube: 60 mm
- Diameter rod: 25,4 mm

Used on Z45/25IC-Z45/25J IC, Z51/30J, S34/22IC, Z51/30J

**REF [161TA2012](#)**

# USED ON GENIE

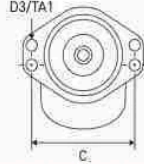
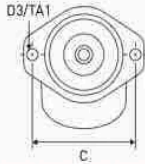


HYDRAULIC PARTS

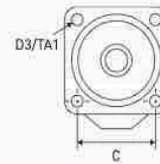
## HYDRAULIC MOTORS

### Type of flange

Type A



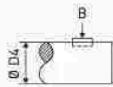
Type C



Type S  
Special shape,  
none of the  
previous types

### Type of shaft

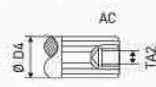
Type A



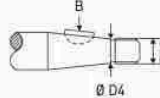
Type B



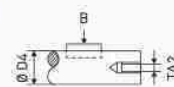
Type C



Type E



Type F



	Thread connections inch	Type of flange	Type of shaft	Total length mm	Used on	REF
	9/16" UNF	C	E	279	GS1530/1532/1930/1932, GS1530/3246, GS30/32/46	<a href="#">161TA1680</a>
	9/16" UNF	C	A	305	GS2668/3268RT	<a href="#">161TA1875</a>
	7/16" UNF	C	E	335	GS2668/3268RT	<a href="#">161TA1516</a>
	9/16" UNF	C	E	291	GS-4047	<a href="#">160TA7889</a>
	7/16" UNF	C	E	325	GS2668/3268DC, GS2668/3268RT	<a href="#">128TA3138</a>



# USED ON GENIE

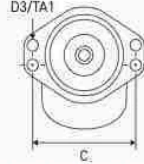
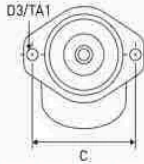


HYDRAULIC PARTS

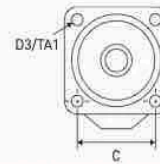
## HYDRAULIC MOTORS

### Type of flange

Type A



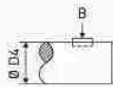
Type C



Type S  
Special shape,  
none of the  
previous types

### Type of shaft

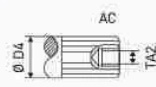
Type A



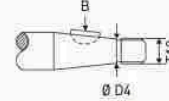
Type B



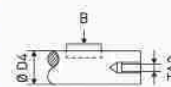
Type C



Type E



Type F



	Thread connections inch	Type of flange	Type of shaft	Total length mm	Used on	REF
	7/8" UNF	C	E	220	GRC-12, GR-12, RUNABOUT, GR-8, QS-12R	<a href="#">160TA6698</a>
	7/8" UNF	C	E	285	GS-2032, GS-2046	<a href="#">131TA9504</a>
	9/16" UNF + 9/16" UNF	S	E	285	GS-30, GS-1530 from serial n° 00001 to 75999, GS-2032, GS-2046	<a href="#">161TA1951</a>
	9/16" UNF	C	E	276	GS-1530 from serial n° 00001 to 75999	<a href="#">160TA7811</a>
	9/16" UNF	C	E	297	GS2668/3268DC, GS2668/3268RT	<a href="#">131TA6872</a>

# USED ON GENIE

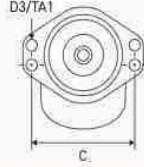
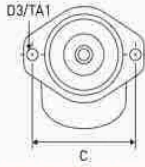


HYDRAULIC PARTS

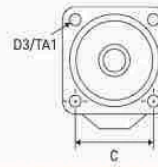
## HYDRAULIC MOTORS

### Type of flange

Type A



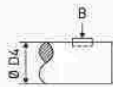
Type C



Type S  
Special shape,  
none of the  
previous types

### Type of shaft

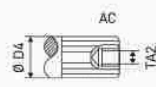
Type A



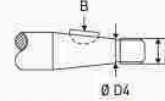
Type B



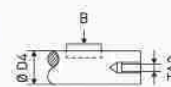
Type C



Type E



Type F



	Thread connections inch	Type of flange	Type of shaft	Total length mm	Used on	REF
	9/16" UNF	A	C	291	Z-45/25, Z-45/25IC from serial n° 9996 to 99999, Z-45/25DC from serial n° 9996 to 99999, Z-45/25J	<a href="#">160TA9028</a>
	7/8" UNF	A	A	184	Z-45/22, Z-30/20N, Z-34/22N, Z-34/22IC, Z-34/22 BI-ENERGY, Z-34/22, Z-45/25DC from serial n° 9996 to 99999, Z-34/22G, Z-34/22 IC, Z-45/22DC, Z-45/25 BI-ENERGY, Z-45/22IC, Z34/22 DC, Z-45/22 MP	<a href="#">131TA6880</a>
	7/16" UNF	S	B	431	Z51/30J, Z45-25(J), A45/25(IC POWER), Z40/23N-Z40-23N RJ, Z45/25(J/DC/BI-ENERGY)	<a href="#">161TA5030</a>
	7/8" UNF	A	F	207	Z-60/34, S-40	<a href="#">161TA1001</a>

# USED ON GENIE



HYDRAULIC PARTS

## PART HYDRAULIC MOTOR



- Length: 210 mm
- Diameter of the hole: 15,7 mm

Used on GS-2668 DC, GS-2668DC, GS-2668RT, GS-2668

REF [160TA9544](#)

## HYDRAULIC OIL TANKS



- Length: 405 mm
- Width: 305 mm
- Height: 240 mm

Used on GS30/32/46, GS1530/3246,  
GS1530/1532/1930/1932, GS2646AV/35

REF [161TA1366](#)



- Kit
- Length: 320 mm
- Width: 240 mm
- Height: 420 mm

Used on Z-45/25 BI-ENERGY, Z-34/22N, Z-30/20N, Z-34/22

REF [161TA1375](#)



## USED ON GENIE



## HYDRAULIC PUMPS



- Total length: 119 mm
- Neck diameter: 82,5 mm
- Direction of rotation: CCW
- Material of housing: aluminium

REF [160TA8999](#)

- Kit hydraulic tank
- Total length: 119 mm
- Neck diameter: 82,5 mm
- Direction of rotation: CCW
- Material of housing: aluminium

Used on GS-2046, GS-1530 from serial n° 00001 to 75999, GS-2032

REF [161TA1180](#)

- Total length: 119 mm
- Neck diameter: 82,5 mm
- Direction of rotation: CCW
- Material of housing: aluminium

Used on GS-2669 DC, GS-2669BE, GS-2669DC

REF [161TA4344](#)

- Total length: 131 mm
- Neck diameter: 82,5 mm
- Direction of rotation: CW
- Material of housing: aluminium

Used on GS-2668 DC, GS-2668DC

REF [160TA9764](#)

- Total length: 132 mm
- Neck diameter: 82,5 mm
- Direction of rotation: CW
- Material of housing: aluminium

Used on Z-45/25IC from serial n° 9996 to 99999, Z-45/25, Z-45/22IC

REF [161TA1484](#)

- Total length: 138 mm
- Neck diameter: 82,5 mm
- Direction of rotation: CW
- Material of housing: aluminium

Used on Z-45/25IC from serial n° 9996 to 99999, Z-51/30J, Z-45/25, GS-3384

REF [161TA1471](#)

- Total length: 150 mm
- Neck diameter: 82,5 mm
- Direction of rotation: CW
- Material of housing: metal

Used on S-60

REF [160TA8957](#)

- Total length: 152 mm
- Neck diameter: 82,5 mm
- Direction of rotation: CW
- Material of housing: aluminium

Used on S-80, S-40, S-60

REF [160TA8810](#)

# USED ON GENIE



## HYDRAULIC PARTS

### HYDRAULIC PUMPS



- Total length: 152 mm
- Neck diameter: 82,55 mm
- Direction of rotation: CW
- Material of housing: aluminium

Used on S-80, S-40, S-60

**REF [161TA1904](#)**



- Total length: 196 mm
- Neck diameter: 82,5 mm
- Direction of rotation: CW
- Material of housing: aluminium

Used on GS-2668 DC, GS-2668 RT, GS-2668DC, GS-2668RT

**REF [160TA9949](#)**



- Total length: 212 mm
- Neck diameter: 82,5 mm
- Direction of rotation: CW
- Material of housing: aluminium + metal

Used on S-60

**REF [160TA9484](#)**



- Total length: 212 mm
- Neck diameter: 82,5 mm
- Direction of rotation: CW
- Material of housing: aluminium + metal

Used on S-60

**REF [161TA1543](#)**



- Total length: 225 mm
- Neck diameter: 82,5 mm
- Direction of rotation: CW
- Material of housing: aluminium

Used on S-80, S-60

**REF [139TA1871](#)**



- Total length: 235 mm
- Neck diameter: 82,5 mm
- Direction of rotation: CW
- Material of housing: aluminium

Used on Z-60/34, S-40

**REF [160TA6751](#)**



- Total length: 78 mm
- Neck diameter: 45,2 mm
- Direction of rotation: CW
- Material of housing: metal

Used on Z-34/22N, Z-25/8, Z-45/25, Z-30/20N, Z-45/22, Z-40/23N, Z-34/22 BI-ENERGY, Z-34/22, Z-45/25DC from serial n° 9996 to 99999, Z-45/22DC, Z-45/25J, Z-45/25 BI-ENERGY, Z34/22 DC, Z-40/23 N

**REF [128TA3125](#)**



- Total length: 88,3 mm
- Neck diameter: 32 mm
- Direction of rotation: CCW
- Material of housing: aluminium

Used on TZ-34/20

**REF [160TA9488](#)**

# USED ON GENIE



## HYDRAULIC PUMP GROUPS

HYDRAULIC PARTS



- Total length: 253 mm
- Direction of rotation motor: CCW
- Voltage: 12 V

Used on S-80, S-60, S-40, S-80X, Z-62/40

**REF 160TA9545**



- Total length: 256 mm
- Direction of rotation motor: CCW
- Voltage: 12 V

Used on GS84/90, GS3390/5390, GS3390/4390/53, Z34/22IC, Z45/25(IC POWER)

**REF 161TA1753**



- Total length: 303 mm
- Direction of rotation motor: CW
- Voltage: 12 V

Used on S-120, S-100, Z-80/60, S-3800

**REF 161TA1491**



- Total length: 211 mm
- Direction of rotation motor: CW
- Voltage: 24 V

Used on Z30/20N, Z40/23N(RJ), Z34/22(N/DC/BI-ENERGY), Z45/25(J/DC/BI-ENERGY)

**REF 161TA2035**



- Total length: 277 mm
- Direction of rotation motor: CW
- Voltage: 24 V

Used on Z-135/70, ZX-135/70, SX-180

**REF 160TA7995**



- Total length: 688 mm
- Direction of rotation motor: CW
- Voltage: 24 V

Used on GR-20J

**REF 160TA5930**

# USED ON GENIE



HYDRAULIC PARTS

## BRAKE REGULATOR/DISTRIBUTOR



Service kit brake release

Used on GS-2668 DC, GS-2032, GS-2668 RT, GS-1530 from serial n° 00001 to 75999, GS-2046, GS-2668DC, GS-2668RT, GS-30, GS-2668

**REF [161TA1173](#)**

## PART OF VALVE



- Hand pump valve
- Length: 134 mm

Used on GS-2046, Z-25/8, GS-1530 from serial n° 00001 to 75999, GS-2668 DC, GS-2668 RT, GS-2032, GS-2668DC, GS-2668RT

**REF [160TA9982](#)**



- Hand pump valve
- Length: 153 mm

Used on GS-30, GR-12, GS-1530 from serial n° 00001 to 75999, GS-2668 DC, GS-2032, GS-2668 RT, GRC-12, QS-12R, GS-2668DC, GS-2668RT, GS-4047, GS-2668, GS-2646 AV

**REF [161TA1889](#)**



Pilot valve

Used on GS-30, GR-12, GS-1530 from serial n° 00001 to 75999, GS-2668 DC, GS-2032, GS-2668 RT, GRC-12, QS-12R, GS-2668DC, GS-2668RT, GS-4047, GS-2668, GS-2646 AV

**REF [161TA1650](#)**