



USED ON
SNORKEL

USED ON SNORKEL



JOYSTICKS & CONTROL BOXES

ELECTRONIC JOYSTICKS



Dual-axis

Used on SL15, SL20, SL25

REF [165TA4411](#)

Single-axis

Used on S1930E, S1932E

REF [145TA3100](#)

Single-axis

Used on SL15, SL19, SL20,
SL25, S2033, S2545REF [145TA3094](#)

Single-axis

Used on SL26SL, SL30SL, A38E,
X26N, M2032, M2639-J, AB38REF [161TA2140](#)

Single-axis

Used on S3370BE, S2770RT,
SR2770, SRT2670, SR2584,
SR3284, SR4084, SLH2584HD,
SLH3284HD, SLH40REF [145TA3092](#)

Single-axis

Used on S1930, SL19E, S2646,
S3246REF [164TA5323](#)

Single-axis

Used on TB37

REF [165TA4412](#)

Lift swing

Used on PRO100, PRO126,
TB120, TB100J, TB126JREF [165TA4413](#)

USED ON SNORKEL



ELECTRONIC JOYSTICKS

JOYSTICKS & CONTROL BOXES



Controller

REF [165TA4414](#)



Controller extend and retract

Used on PRO100, PRO126, TB120, TB100J, TB126J

REF [165TA4417](#)



Single-axis

REF [126TA5262](#)

Depends on type and serial n°, for more info contact your sales advisor.



Single-axis

Used on A46JRT

REF [165TA4418](#)



Dual-axis

Used on TB80, TB80J, TB85J, TBA60, TB60, PRO66, TB66J, ATB60, AB60J, PRO100, PRO126, TB120, TB100J, TB 126J, SP17, SP18

REF [165TA4415](#)



Dual-axis

Used on ATB42, ATB50, ATB46E, ATB46N, AB46J, AB50J

REF [145TA3110](#)



Dual-axis

Used on ATB42, ATB50, ATB46E, ATB46N, AB46J, AB50J

REF [165TA4416](#)

USED ON SNORKEL



JOYSTICKS & CONTROL BOXES

CONTROL BOXES



Upper control box
Used on SL15, SL19, SL20, SL25
REF [165TA4419](#)



Lower control panel
Used on A38E, X26N, AB38
REF [165TA4421](#)



Upper control box
Used on S2646, S3246
REF [165TA4420](#)

USED ON SNORKEL



MOTOR CONTROLLERS



- Voltage: 24 V
- Current: 360 A

Used on S2646, S3246

REF [165TA4422](#)



- Voltage: 24 V
- Current: 360 A
- With extra relay

Used on S1930, SL19E

REF [165TA4424](#)



- Voltage: 24–36 V
- Current: 275 A

Used on X26N

REF [161TA2059](#)



- Voltage: 48 V (pump controller)
- Current: 600 A

Used on AB46E, A46JE

REF [165TA4425](#)



- Voltage: 24–48 VDC (motor controller)
- Current: 275 A

Used on AB38, AB38E

REF [164TA7465](#)



- Voltage: 48 V (motor controller)
- Current: 500 A

Used on AB46E, A46JE

REF [165TA4426](#)



- Voltage: 24–48 V (Sevcon controller)
- Current: 270 A

Used on SEC153, SE133/SE153

REF [165TA4423](#)

CONTROLLERS & PRINTED CIRCUIT BOARDS

USED ON SNORKEL



CONTROLLERS & PRINTED CIRCUIT BOARDS

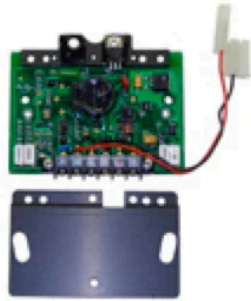
PRINTED CIRCUIT BOARDS



Overload module CE



Circuit board



Circuit board



Control card



Dampner



ECU box (with printed circuit board)



EV10 traction panel



LCD screen pgrtronix

USED ON SNORKEL



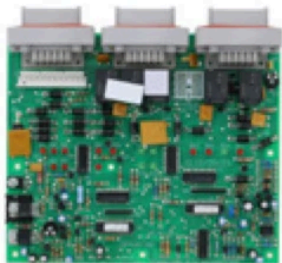
PRINTED CIRCUIT BOARDS



Module control



Printed circuit board assy (platform controller)



Resistor module dual



Matrix module



Circuit board

Although these electronic cards may resemble the one fitted on your mobile elevating work platform there can be a big difference. Therefore we always ask you to supply us with part number or full vehicle details before ordering a similar unit.

This is just a small selection of our electronic boards. For all other types, please feel free to call us!

CONTROLLERS & PRINTED CIRCUIT BOARDS

USED ON SNORKEL



ELECTRICAL PARTS

AUTOMATIC FUSES



- Type fuse: with push button
- Voltage: 32 VDC
- Current: 25 A

REF [141TA1427](#)



- Type fuse: with push button
- Voltage: 50 VDC
- Current: 10 A

REF [122TA7782](#)



- Type fuse: with push button
- Voltage: 50 VDC
- Current: 15 A

REF [122TA7783](#)



- Type fuse: with push button
- Voltage: 50 VDC
- Current: 20 A

Used on S3370BE/S2770RT, SR2584/SR3284/SR4084, SLH2584HD/SLH3284HD/SLH40, MHP15/44, MHP13/35, EPV12J, MHP15J, SR2770, MHP16/47

REF [122TA7784](#)



- Type fuse: with push button
- Voltage: 50 VDC
- Current: 3 A

Used on AB85RJ, AB60JRT, AB80J-AB85®J-A80J-A, TBA50RD, SL A27/A35, TB80

REF [151TA2026](#)

USED ON SNORKEL



RELAYS



- Type of relay: general purpose and power relay
- Voltage: 12 V
- Type of voltage: DC
- Current: 10 A

Used on A46JRT

REF [124TA4686](#)



- Type of relay: general purpose and power relay
- Voltage: 12 V
- Type of voltage: DC
- Current: 10 A

Used on A46JE, A46JRT

REF [122TA7891](#)



- Type of relay: general purpose and power relay
- Voltage: 12 V
- Type of voltage: DC
- Current: 10 A

Used on S3370BE/S2770RT, SR2584/SR3284/SR4084, SLH2584HD/SLH3284HD/SLH40, SR2770, SRT2670

REF [128TA3014](#)



- Type of relay: general purpose and power relay
- Voltage: 12 V
- Type of voltage: DC
- Current: 10 A

Used on TBA50RD, SL A27/35, UN033D/G 4X4, UN041D/G

REF [122TA7898](#)



- Type of relay: mini-relay
- Voltage: 12 V
- Type of voltage: DC
- Current: 40/30 A

Used on AB80J-AB85(R) J-A80J-A, A46JRT, TBA50RD, SL A27/A35, ATB60

REF [116TA5661](#)



- Type of relay: mini-relay
- Voltage: 12 V
- Type of voltage: DC
- Current: 40/30 A

Used on SS370BE/S2770RT, SR2584/SR3284/SE4084, SLH2584HD/SLH3284HD/SLH40, S2646/S3246, S1930, ATB42-50, ATB46E

REF [136TA8355](#)



- Type of relay: mini-relay
- Voltage: 12 V
- Type of voltage: DC
- Current: 70 A

Used on AB50JRT, ATB42-50, UN033D/G 4X4, UN033/UN041G, TBA80, UN041D/G 4X4

REF [131TA2657](#)

USED ON SNORKEL



ELECTRICAL PARTS

CONTACTORS						
	Voltage V	Maximum current uninterrupted A	Magnetic blowouts	Dust cover	Used on	REF
	24		Yes		WILDCAT 300SE, BARECAT SERIES, SL15, SL20, SL25	103TA1619
	24		Yes		UN041E, UN033E, SL25	111TA3539
	24	120	No		A38E, AB38	152TA2169
	24	200	No	Enclosed version	S3370BE/ S2770RT, S1930E/ S1932E, S2646/S3246	111TA4054
	36-48		No		UN041E, UN033E	106TA2088
	48		No		A38E, A38	164TA7104
	24	200	Not specified	Enclosed version	S1930, SL19E	106TA1645

ENCODER



- Shaft length: 13 mm
- Number of pins: 2

Used on A38E, AB38

REF [164TA7446](#)

USED ON SNORKEL



CABLE LOOMS



- Cable type: < 6 mm²
- Type of loom: multiple cables
- Total length: 12 m
- Number of plugs: 4

REF [164TA7334](#)



- Cable type: < 6 mm²
- Type of loom: multiple cables
- Total length: 11,4 m
- Number of plugs: 2

Used on SL20, SL19, S2033

REF [165TA4428](#)



- Cable type: < 6 mm²
- Type of loom: multiple cables
- Total length: 670 mm
- Number of plugs: 6

Used on S1930E/S1932E

REF [165TA4427](#)



- Cable type: < 6 mm²
- Type of loom: multiple cables
- Total length: 1870 mm
- Number of plugs: 2

Used on SL26SL/SL30SL

REF [165TA4429](#)



- Cable type: < 6 mm²
- Type of loom: multiple cables
- Total length: 2550 mm
- Number of plugs: 6

Used on TM12, M1230E

REF [164TA7335](#)

CONTROL CABLE



- Cable type: < 6 mm²
- Type of loom: multiple cables
- Total length: 3100 mm
- Number of plugs: 3

REF [165TA4430](#)

USED ON SNORKEL



ELECTRICAL PARTS

HORNS



- Volume: 112 dB
- Voltage: 24 V
- Type of mounting: straight bracket
- Diameter: 90 mm

Used on SPM20, X26N, TM12, M2032/2639-J, M1230E

REF [126TA6165](#)

E-approved



- Volume: 114 dB
- Voltage: 36-38 V
- Type of mounting: straight bracket
- Diameter: 90 mm

Used on A38E, AB38

REF [111TA3928](#)

E-approved

BUZZERS/BACK-UP ALARMS



- Voltage: 12 V
- Volume: 102 dB

Used on SL15, SL25, SL20

REF [164TA7086](#)

SAE-approved



- Voltage: 12-48 V
- Volume: 80 dB

Used on S1930E/S1932E, S2646/S3246, S1930, SL19E

REF [139TA5212](#)



- Voltage: 6-30 V
- Volume: 90 dB

Used on SL26SL/SL30SL, SPM20, A38E, X26N, TM12, M2032/2639-J, M1230E

REF [128TA3427](#)



- Voltage: 9-48 V
- Volume: 97 dB

Used on AB50JRT, AB46E, AB46RT, A46JE, ATB42-50, UNO33D/G 4X4, UNO41D/G

REF [145TA4432](#)

HOUSING CONNECTORS



- Biggest diameter: 31 mm
- Smallest diameter: 28 mm
- Height: 38 mm
- Number of connecting holes: 14 female

REF [165TA4431](#)



- Biggest diameter: 42 mm
- Smallest diameter: 39 mm
- Height: 42 mm
- Number of connecting holes: 14 female

Used on S1930E/S1932E, SL15, SL19, SL20, SL5, SL19E, S2033, S2545

REF [165TA4046](#)

USED ON SNORKEL



ELECTRICAL PARTS

ELECTRIC MOTORS						
	Minimum voltage V	Current A	Revolutions/ minute Rpm	Power kW	Used on	REF
	24	162	3600	3,1	SL15, SL25	165TA4433
	24	162	3600	3	SL19, SL19E, SL20, SL25, S1930	165TA4434
	48				A38E, AB38	164TA7129
	24	162	3600	3,09	SL20	150TA9959
	48		1000	4	A38E, AB38	164TA7130
	24	162	3600	3,1	SL15	122TA7776

USED ON SNORKEL



ELECTRICAL PARTS

ELECTRIC MOTORS

	Minimum voltage V	Current A	Revolutions/ minute Rpm	Power kW	Used on	REF
	48	108	2700	5,45		164TA7128
	24	180	3100	3	TM12, M1230e	165TA4435
	48	40	2700	1,6	UN041E, UN033E	122TA7775

REDUCTOR HUBS



Diameter: 242 mm

Used on A46JRT

REF [165TA4436](#)

Diameter: 242 mm

Used on A38E, AB38

REF [164TA7496](#)

USED ON SNORKEL



SWITCHES

BATTERY DISCONNECT SWITCHES



- Voltage: 6 – 36 VDC
- Current: 800 A
- Quantity of poles: 2

Used on SL26SL/SL30SL,
S3370BE/S2770RT,
AB80J-AB85(R)J-A80J-A,
A46JRT, SR3370/SR2770,
S1930E/S1932E

REF [146TA9930](#)



- Voltage: 6 – 12 – 24 – 36 VDC
- Current: 175 A
- Quantity of poles: 2

Used on A46JRT, UNO41E,
UNO33E, AB38J, PRO100,
PRO126, TB120

REF [165TA4437](#)

MUSHROOMHEAD PUSH BUTTONS



- Built-in diameter: 22 mm
- Diameter knob: 40 mm

Used on AB46E, AB46RT,
S3370BE/S2770RT, A46JE,
A46JRT, WILDCAT 3000SE,
BARECAT SERIES, SL15

REF [160TA3323](#)



- Built-in diameter: 22 mm
- Diameter knob: 40 mm

Used on AB46E, A46JE,
S1930E/S1932E

REF [164TA7628](#)

PUSH BUTTON



- Diameter: 39 mm
- Length: 28 mm
- Button colour: black

Used on S3370BE/S2770RT,
SR2584/SR3284/SR4084,
SLH2584HD/SLH3284HD/
SLH40, SL19, SL20, SL25,
S2033

REF [138TA7153](#)

CONTACT BLOCK



- Voltage: 600 VDC
- Current: 10 A
- Number of NO contacts: 2

Used on Barecat, S1930E/
S1932E, SL15, SL19, SL20,
SL25, TV15/TV20/TV25, S2646/
S3246, S2545

REF [146TA7892](#)

ROTARY SWITCH



- Number of positions: 2
- Voltage: 240 V
- Current: 10 A
- Built-in dimensions: 40 x 30 mm

Used on S3370BE/S2770RT,
SR2584/SR3284/SR4084,
SLH2584HD/SLH3284HD/
SLH40, SR2770, SRT2670

REF [164TA7616](#)

USED ON SNORKEL



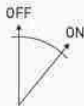
SWITCHES

IGNITION SWITCHES



- Number of connections: 2
- Number of positions: 2
- Built-in diameter: 19 mm

Used on Barecat, S1930E/S1932E, SL15, SL19, SL20, SL25, TV15/TV20/TV25, S2646/S3246, S2545

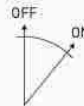


REF 165TA4438



- Number of connections: 3
- Number of positions: 2
- Built-in diameter: 17 mm

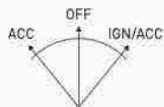
Used on X26N, M-2032/2639-J, A38E, AB38



REF 164TA7402



- Number of connections: 3
- Number of positions: 3
- Built-in diameter: 19 mm

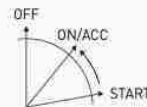


REF 141TA2635



- Number of connections: 3
- Number of positions: 3
- Built-in diameter: 20 mm

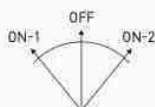
Used on S3370BE/S2770RT, AB80J-AB85(R)J-A80J-A, SR2584/SR3284/SR4084, SLH2584HD/SLH3284HD/SLH40, ATB60, ATB42-50, UNO33D/G 4X4, UNO33D/G, UNO41D/G



REF 141TA2560



- Number of connections: 4
- Number of positions: 3
- Built-in diameter: 21,5 mm



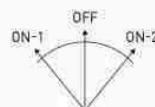
Used on S1930E/S1932E

REF 165TA4439



- Number of connections: 4
- Number of positions: 3
- Built-in diameter: 22 mm

Used on PRO100/PRO126, ATB60, TB60, TB60, A46JE, A46JRT, S1930E/S1932E

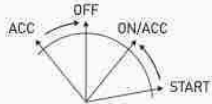


REF 110TA3077



- Number of connections: 4
- Number of positions: 4
- Built-in diameter: 19 mm

Used on AB80J-AB85(R) J-A80J-A, A46JRT, TBA50RD, SL A27/A35, UNO41 4X4, UNO33D/G 4X4, UNO41D/G

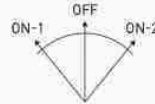


REF 126TA5997



- Number of connections: 4
- Number of positions: 3
- Built-in diameter: 22 mm

Used on S3370BE/S2770RT, SL20, S2646/S3246, SR2770



REF 165TA4440

USED ON SNORKEL



SWITCHES

KEYS



- Key number: 231
- Number of supplied keys: 2

Used on S1930E/S1932E

REF [165TA4441](#)



- Key number: 455
- Number of supplied keys: 1

REF [110TA3210](#)



- Key number: 001
- Number of supplied keys: 1

Used on X26N, M-2032/2639-J

REF [164TA7595](#)



- Key number: 523
- Number of supplied keys: 1

Used on SR2584/SR3284/
SR4084, SLH2584HD/
SLH3284HD/SLH40, UN033D/G
4X4, UN041D/G, TB80J/TB85J

REF [165TA4442](#)

USED ON SNORKEL



SWITCHES

LIMIT SWITCHES



- Number of CO contacts: 2
- Current: 10 A

Used on AB80J-AB85(R)
J-A80J-A, A46JE, TB80J/TB85J,
TBA60, TB42/TB50, TB66J,
PR066

REF [146TA9939](#)



- Number of CO contacts: 2
- Current: 3 A

Used on ATB60, UNO-41 4X4,
UNO33D/UNO33G, UNO33G/
UNO41G, UNO41D/G, UNO41E

REF [147TA5763](#)



- Number of NO contacts: 1
- Number of CO contacts: 1
- Current: 6 A

Used on S3370BE/S2770RT,
EPV16, MHP15/44, MHP13/35,
SR3370/SR2770

REF [147TA2178](#)



- Number of NO contacts: 1
- Number of CO contacts: 1
- Current: 10 A

Used on AB80J-AB85(R)
J-A80J-A, A46JE, A46JRT, SL20,
ATB42-50, AB38J, ATB46E

REF [147TA1774](#)



- Number of NO contacts: 1
- Number of CO contacts: 1
- Current: 3 A

Used on S1930E/S1932E,
S2646/S3246, S1930

REF [147TA5255](#)

PRESSURE CONTACT



- Thread: 1/8" BSP conical
- Connection: fixed fiche
- Switch mode: normally closed
- Pressure range: 0,6 bar
- Length: 63 mm

Used on SL26SL/SL30SL

REF [165TA4443](#)

KNOB



- Diameter: 39,2 mm
- Length: 40,5 mm
- Height: 20,8 mm

Used on A46JE, A46JRT

REF [165TA4444](#)

USED ON SNORKEL



SWITCHES

TOGGLE SWITCHES



- Number of connections: 12
- Voltage: 125/277 V
- Current: 15 A

Used on AB80J-AB85(R)
J-A80J-A, SL15, SL A27/A35,
SL25

REF [146TA5684](#)



- Number of connections: 3
- Voltage: 125/250 V
- Current: 12 A

Used on AB85RJ,
AB80J-AB85(R)J-A80J-A,
S3370BE/S2770RT, WILDCAT
3000SE

REF [106TA1443](#)



- Number of connections: 4
- Voltage: 125/250 V
- Current: 10 A

Used on ATB46E, AB46J

REF [146TA9933](#)



- Number of connections: 6
- Voltage: 125/250 V
- Current: 12 A

Used on SL15, SL20, ATB42-50,
ATB46N

REF [146TA9934](#)



- Number of connections: 6
- Voltage: 125/250 V
- Current: 12 A

Used on EPV16, AB80J-AB85(R)
J-A80J-A, ATB60, ATB42-50,
UN041 4X4, UN033D/G 4X4

REF [128TA3038](#)



- Number of connections: 6
- Voltage: 125/250 V
- Current: 12 A

REF [126TA5388](#)



- Number of connections: 6
- Voltage: 125/277 V
- Current: 10 A

Used on S3370BE/S2770RT,
EPV16, A46JE, A46JRT,
TBA50RD, SL15

REF [127TA2721](#)



- Number of connections: 6
- Voltage: 125/277 V
- Current: 10 A

Used on UN041 4X4, UN033D/G
4X4, UN041D/G, UN041E,
UN033E

REF [146TA5677](#)

USED ON SNORKEL



SWITCHES

TOGGLE SWITCHES



- Number of connections: 6
- Voltage: 125/277 V
- Current: 15 A

Used on S3370BE/S2770RT, EPV16, SL15, SR2584/SR3284/SR4084, SLH2584HD, SLH3284HD, SLH40

REF [128TA3039](#)



- Number of connections: 3
- Voltage: 125/277 V
- Current: 10 A

Used on A38E, AB80J-AB85(R) J-A80J-A, A46JE, A46JRT, TB80, TBA50RD, TB80J/TB85J

REF [123TA7602](#)



- Number of connections: 3
- Voltage: 125/250 V
- Current: 12 A

Used on S1930E/S1932E, SL15, SL20, SL25

REF [146TA1783](#)



- Number of connections: 6
- Voltage: 125/250 V
- Current: 10 A

Used on AB80J-AB85(R) J-A80J-A, TBA50RD, SR2584/SR3284/SR4084, SLH2584HD/SLH3284HD/SLH40, ATB60, SL A27/A35, UNO41 4X4, UNO33D/G 4X4

REF [151TA2426](#)

SWITCH ROCKER



- Number of connections: 4
- Total length: 115 mm
- Width: 36 mm

Used on A38E, 2032/2639-J, AB38

REF [127TA2750](#)

SWITCH ACCESSORY



Cover toggle switch

Used on S3370BE/S2770RT, SL15, SR2584/SR3284/SR4084, SLH2584HD/SLH3284HD/SLH40, SLH SERIES

REF [151TA2363](#)

FOOT SWITCH



Used on AB80J-AB85(R) J-A80J-A, EPV16, A46JE, A46JRT, SL A27/A35, SL25, UNO41 4X4

REF [165TA4445](#)

USED ON SNORKEL



SENSORS

LEVEL SENSOR



- Diameter: 43 mm
- Height: 12,7 mm

Used on TV15/TV20/TV25, SR2584/SR3284/SR4084, SLH2584HD/SLH3284HD/SLH40

REF [161TA2024](#)

TILT SENSORS



- Diameter: 96,8 mm
- Height: 116,8 mm
- Voltage: 7-48 VDC
- Detection: 2°

Used on SL15, SL19, SL20

REF [160TA3914](#)



- Diameter: 96,8 mm
- Height: 116,8 mm
- Voltage: 7-48 VDC
- Detection: 2°

Used on SL19E, SL20, SL25

REF [165TA4446](#)



- Diameter: 84 mm
- Height: 60 mm
- Voltage: 24 V
- Detection: 3°

Used on A38E

REF [164TA7572](#)

LOAD CELL



- Length cable: 3000 mm
- Length: 145 mm
- Width: 25 mm
- Diameter holes: 11 mm

Used on AB80J-AB85(R) J-A80J-A

REF [164TA7565](#)

ANGLE SENSOR



- Length: 103 mm
- Width: 32 mm
- Height: 37,5 mm

Used on S1930E/S1932E, S2646/S3246, SL26SL/SL30SL, X26N

REF [164TA7125](#)

USED ON SNORKEL



SENSORS

PROXIMITY SENSORS



- Length: 82 mm
- Height: 19 mm
- Voltage: 250/300 V

Used on X26N, M2032/2639-J, S1930E/S1932E

REF [164TA7586](#)



- Length: 54 mm
- Height: 32 mm
- Voltage: 100 V

Used on S3370BE/S2770RT, SR2584/SR3284/SR4084, SLH284HD/SLH3284HD/SLH40, SR2770, SRT2670, SP17/SP18

REF [164TA7569](#)

PRESSURE CONTACT



- Thread: 9/16" UNF
- Connection: 2 x screw connection
- Switch mode: multiple, different or with signal
- Pressure range: 20-100 bar
- Length: 68 mm

Used on TB80J/TB85J, PRO100, PRO126, TB80, TB100J, TB120, TB126

REF [165TA4447](#)

USED ON SNORKEL



BATTERY DISCHARGE INDICATORS

CURTIS 



- Voltage: 24 V
- Built-in diameter: 52 mm

Used on S1930E/S1932E, SL15, SL20, SL25, S2646/S3246

REF [165TA4448](#)



- Voltage: 48 V
- Built-in diameter: 51,5 mm

Used on UN041E, UN033E

REF [165TA4449](#)

INDICATORS & HOUR METERS

METER DASHBOARD



- Ammeter: 0-30 A
- Built-in diameter: 50,5 mm

Used on SL15, SL19, SL19E, S2033, S2545

REF [161TA1555](#)

USED ON SNORKEL



HYDRAULIC PARTS

CARTRIDGES WITH COIL



- Voltage: 18 V
- AC/DC: DC
- Resistance: 15,5 Ω
- Diameter: 13,3 mm

Used on TM12, M2032/2639-J, M1230E

REF [165TA4450](#)



- Voltage: 24 V
- AC/DC: DC
- Thread: 1" SLW
- Length: 120 mm

Used on S1930E/S1932E, S1930, SL19E

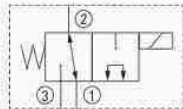
REF [165TA4452](#)

Cartridges exist in a variety of dimensions and wiring diagrams. When placing an order, always provide the necessary info with regard to the wiring diagram, as cartridges may have identical dimensions yet be connected in different ways.

CARTRIDGE VALVES



- Width across flats: 22,2 mm
- Length: 107 mm
- Diameter: 13 mm

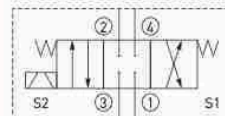


Used on TB42/TB50, TB37, ATB60

REF [165TA4451](#)



- Width across flats: 22,2 mm
- Length: 140 mm
- Diameter: 16 mm

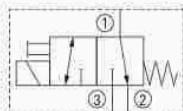


Used on TB42/TB50, TB37, ATB60

REF [165TA4453](#)



- Width across flats: 22,4 mm
- Length: 106,1 mm
- Diameter: 15,8 mm



Used on AB80J-AB85(R) J-A80J-A, UN041D/UN041G, UN033D/G 4X4, UN041D/G, UN033D/G, TB80J/TB85J, TBA60

REF [139TA5139](#)

USED ON SNORKEL



VALVE



- Thread: 1" SLW
- Length: 81,5 mm

Used on TB80J/TB85J, TBA60, TB42/TB50, TB60, PRO66

REF [165TA4454](#)

PRESSURE VALVES (FLOW)



- Thread: M20 x 1,5 mm
- Length: 87 mm

Used on A38E, M2032/2639-J, A38E, AB38

REF [164TA7704](#)



- Thread: 1 5/16" UNF
- Length: 57 mm

Used on UN033D/G 4X4, UN041D/G 4X4, AB80J-AB85(R) J-A80J-A, TB80J/TB85J, TBA60, TB60, PRO66, TB66J

REF [165TA4455](#)

EMERGENCY VALVES



- Thread: 3/4" UNF
- Length: 24 mm

Used on A38E, M2032/2639-J, A38E, AB38

REF [164TA7703](#)



- Thread: 3/4" UNF
- Length: 66,6 mm

REF [165TA4456](#)

USED ON SNORKEL



HYDRAULIC PARTS

COIL CARTRIDGE VALVES



- Voltage: 10 V
- AC/DC: DC
- Resistance: 7,3 Ω
- Diameter: 33 mm

Used on AB60JRT, UNO41D/G, UNO33D/G, TB80J/TB85J, TBA60

REF [131TA8387](#)



- Voltage: 12 V
- AC/DC: DC
- Resistance: 5,3 Ω
- Diameter: 24 mm

Used on ATB42-50, UNO33D/G 4X4, UNO41D/G, UNO41E, TBA60,0TB60, PRO66

REF [165TA4460](#)



- Voltage: 12 V
- AC/DC: DC
- Resistance: 9,4 Ω
- Diameter: 36 mm

Used on AB46E, AB46RT, A46JE, A46JRT

REF [165TA4457](#)



- Voltage: 24 V
- AC/DC: DC
- Resistance: 29,1 Ω
- Diameter: 43,8 mm

Used on S1930, SL19E

REF [165TA4461](#)

FITTINGS FOR HYDRAULIC CIRCUITS



- Male and female
- Elbow 90°
- Inner thread: 9/16" JIC
- Outer thread: 9/16" JIC

Used on AB80J-AB85[R] J-A80J-A, A46JRT, S1930E/S1932E

REF [165TA4458](#)



- Straight male
- Thread: 9/16" JIC-9/16" UNF

Used on TM12, M1230E, AB80J-AB85[R]J-A80J-A, EPV16

REF [107TA3668](#)

CARTRIDGE VALVE



Used on TB80J/TB85J, TBA60, PRO66, PRO100, TB66J, TB60, TB80, ATB60, AB60J

REF [165TA4459](#)

USED ON SNORKEL



HYDRAULIC PARTS

HYDRAULIC CYLINDERS



- Steer/brake cylinder
- Total measured length: 248 mm
- Diameter tube: 65,4 mm
- Diameter rod: 20 mm

Used on M1230E

REF [165TA4468](#)



- Steer cylinder
- Total measured length: 510 mm
- Diameter tube: 48 mm
- Diameter rod: 16 mm

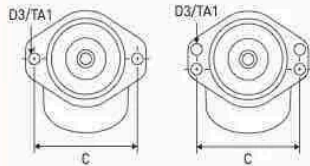
Used on S2646/S3246

REF [165TA4469](#)

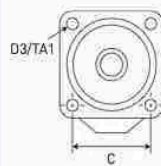
HYDRAULIC MOTORS

Type of flange

Type A



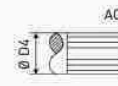
Type C



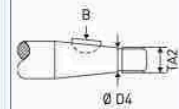
Type S
Special shape,
none of the
previous types

Type of shaft

Type B



Type E



	Thread connection Inch	Type of flange	Type of shaft	Total length mm	Used on	REF
	1 1/16 UNF + 7/16 UNF	C	E	389	SR3370/SR2770, S3370BE/S2770RT	165TA4462
	1 1/16 UNF + 9/16 UNF	A	B	305	TBA60, TB42/TB50, PRO66, TB37, TBA50RD	165TA4463
	1 1/16 UNF	C	E	335	S3370BE/S2770RT, S3370/S2770	165TA4464

USED ON SNORKEL

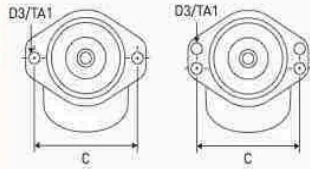


HYDRAULIC PARTS

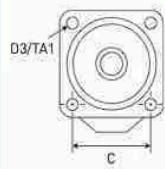
HYDRAULIC MOTORS

Type of flange

Type A



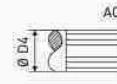
Type C



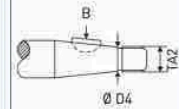
Type S
Special shape,
none of the
previous types

Type of shaft

Type B



Type E



	Thread connection Inch	Type of flange	Type of shaft	Total length mm	Used on	REF
	7/8 UNF	C	E	319		131TA6819
	7/8 UNF	C	E	205	S1930E/S1932E, SL19E, S1930	165TA4465
	9/16 UNF	S	E	205	TM12, M1230E	164TA7258
	7/8 UNF	C	E	299	S2646/S3246	165TA4466
	7/16 UNF	S	B	431	A46JE, A46JRT	165TA4467

USED ON SNORKEL



HYDRAULIC PARTS

HYDRAULIC PUMPS						
	Total length	Neck diameter	Direction of rotation	Material of housing	Used on	REF
	mm	mm				
	121	45,2	CCW	Aluminium	S1930E/S1932E	165TA4470
	164	82,5	CW	Aluminium	A46JRT	165TA4471
	79	32	CW	Aluminium		165TA4472
	96	51	CW	Aluminium	SL15, SL25, ATB44E, ATB33/ATB38	165TA4473
	119,5	50,8	CW	Aluminium	S1930	165TA4474
	103	45,2	CCW	Aluminium	TM12, M1230E	165TA4475

USED ON SNORKEL



HYDRAULIC PARTS

HYDRAULIC PUMP GROUPS				
	Electric motor VDC	Power kW	Used on	REF
	12	0,24	TB37, PR0126	165TA4476
	12	0,24	TB66J, ATB60, TB60, TB00J, TB126J	165TA4477
	24		S1930/S1932E	165TA4478
	24		TM12, M1230E	165TA4479

USED ON SNORKEL



ENGINE STOP SOLENOIDS



- Voltage: 12 V
- Type of current: DC
- Function: pull
- Mounting side: both sides
- Length: 245 mm

Used on UNO41D/G, UNO33D/G,
TBA40/TBA40N, TB80J/TB85J,
TBA80, TBA60

REF [165TA4480](#)



- Voltage: 12 V
- Type of current: DC
- Function: pull
- Mounting side: both sides
- Length: 135 mm

REF [165TA4481](#)



- Voltage: 12 V
- Type of current: DC
- Function: pull
- Mounting side: both sides
- Length: 160,5 mm

REF [122TA7873](#)



- Voltage: 12 V
- Type of current: DC
- Function: pull
- Mounting side: both sides
- Length: 196 mm

Used on TB80J/TB85J

REF [122TA7879](#)

STARTER



- Voltage: 12 V
- Power: 2,7 kW
- Number of teeth: 11

REF [160TA4078](#)

USED ON SNORKEL



BODY & CHASSIS PARTS

BALL JOINT



- Type of rod end: inner thread
- Length: 32 mm
- Thread: 1/4" UNF
- RH/LH thread: RH

REF [105TA1476](#)

BALL JOINT ROD ENDS



- Outer diameter: 18,7 mm
- Inner diameter: 6,4 mm
- Height: 22 mm

Used on A46JRT

REF [164TA7513](#)



- Outer diameter: 19,2 mm
- Inner diameter: 6,3 mm
- Height: 30,3 mm

Used on SL26SL/SL30SL,
S3370BE/S2770RT, SR2584/
SR3284/SR4084, SLH2584HD/
SLH3284HD/SLH40, SL25

REF [160TA9198](#)

HUB WHEEL



- Total height: 37 mm
- Conical mounting holes:
diameter 27-31 mm
- Number of holes: 5

Used on S1930E/S1932E

REF [165TA4482](#)

HYDRAULIC BRAKE CALIPER



Used on UN033E, UN041E

REF [165TA4483](#)

USED ON SNORKEL



DOOR HANDLES



- Length: 125 mm
- Width: 41,5 mm
- Height: 20 mm

Used on A38E, AV38.

REF [164TA7301](#)



- Length: 93 mm
- Width: 47 mm
- Height: 58 mm

Used on AB80J-AB85(R)
J-A80J-A, S1930E/S1932E,
SL19E, SL20, S2646/S3246,
S1930

REF [126TA5894](#) - RH



- Length: 95 mm
- Width: 42 mm
- Height: 60 mm

Used on AB80J-AB85(R)
J-A80J-A, S1930E/S1932E,
SL19E, SL20, S2646/S3246,
S1930

REF [127TA2695](#) - LH



- Length: 120 mm
- Width: 30 mm
- Height: 60 mm

Used on SL26SL/SL30SL,
S3370BE/S2770RT, S3370BE/
S2770RT, SR3370/SR2770,
SP17/SP18, SRT2670

REF [164TA7290](#)



- Length: 84 mm
- Width: 67 mm

Used on TM12, M1230E

REF [164TA7298](#)



- Length: 93 mm
- Width: 69,5 mm

Used on S1930E/S1932E

REF [165TA4484](#)



Length: 102 mm

Used on TM12, M1230E

REF [164TA7296](#)

USED ON SNORKEL



BODY & CHASSIS PARTS

HINGES



- Length: 77 mm
- Width: 70 mm
- Height: 29 mm
- Diameter holes: 3/16"

Used on S3370BE/S2770RT,
SR3370/SR2770, SRT2670

REF [165TA4485](#)



- Length: 71 mm
- Width: 78 mm
- Height: 24 mm
- Diameter holes: 3/16"

Used on S1930E/S1932E

REF [164TA7305](#)

STOP LEVER



- Length: 127 mm
- Width: 39 mm
- Height: 41 mm

Used on X26N, S1930E/S1932E

REF [164TA7094](#)

PULLEY MOUNTS



- Number of holes: 2
- Total length: 386 mm
- Material: metal

Used on S1930, S2646/S3246,
SL19E

REF [165TA4486](#)



- Number of holes: 3
- Total length: 716 mm
- Material: metal

Used on S1930E/S1932E

REF [165TA4487](#)




- Number of holes: 2
- Total length: 663 mm
- Diameter: 35 mm
- Material: metal

Used on A38E

REF [164TA7011](#)

USED ON SNORKEL



WEAR PADS				
	Length mm	Material	Used on	REF
	152,5	Plastic	TB80J/TB85J, TB42/TB50, TB60, PRO66, TB66J	165TA4488
	152,5	Plastic	TB50RD, TB120, TB37, ATB60, TBA80, TBA60, TBA42/TBA50	165TA4489
	127	Plastic	TM12, M1230E	164TA7195

CABLE GUIDE



- Outside dimensions: 90 x 35 mm
- Inside dimensions: 77 x 26 mm
- Material: plastic

Used on UN033D/G 4X4, UN041E, UN033E, TB42/TB50,
TB60, PRO66, TB66J

REF [165TA4490](#)

USED ON SNORKEL



BODY & CHASSIS PARTS

CONTROL CABLES					
	Cable length mm	Diameter cable mm	Length sleeve mm	Used on	REF
	2800	2	2640	SL20, SL25, S2033, S2545	165TA4491
	2170	2	2030	SL26SL/SL30SL	164TA7313
	2230	2	2180	S3370BE/S2770RT	165TA4492
	2354	2	2315	S3370BE/S2770RT, SR3370/SR2770	165TA4493
	7050	2	6970	S3370BE/S2770RT, SR3370/SR2770	165TA4494

CAP



- Vented
- For fuel tank

Used on SL26SL/SL30SL,
S3370BE/S2770RT, SR2584/
SR3284/SR4084

REF [165TA4495](#)

USED ON SNORKEL



DECALS

DECALS



- Length: 101 mm
- Height: 36 mm

Used on S1930E/S1932E, S1930, SL15, SL20, SL25

REF [163TA5555](#)

- Length: 108 mm
- Height: 118,5 mm

Used on S3370BE/S2770RT, EPV16, AB80J-AB85(R), J-A80J-A, SR3370/SR2770, MHP41, MHP33, UN033E

REF [165TA4498](#)

- Length: 116 mm
- Height: 68 mm

Used on SL26SL/SL30SL, X26N, TM12, M1230E

REF [164TA7369](#)

- Length: 117 mm
- Height: 52 mm

Used on X26N, TM12, M1230E

REF [164TA7371](#)

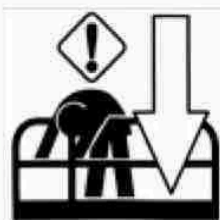
- Length: 119,5 mm
- Height: 31,5 mm

Used on SL26SL/SL30SL, S3370BE/S2770RT, S1930E/S1932E

REF [165TA4496](#)

- Length: 62 mm
- Height: 25 mm

Used on SL15, SL20, SL25, S2646/S3246, S1930E/S1932E

REF [165TA4497](#)

- Length: 120 mm
- Height: 109 mm

Used on TL34, SL26SL, A38E, X26N

REF [163TA2885](#)

- Length: 149 mm
- Height: 259 mm

Used on A38E, M2032/2639-J

REF [163TA7769](#)

USED ON SNORKEL



DECALS

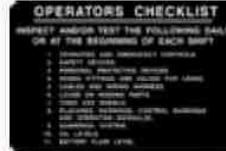
DECALS



- Length: 150 mm
- Height: 63 mm

Used on SL26SL/SL30SL, A38E, TM12, M2032/2639-J

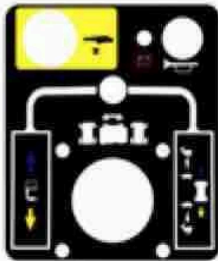
REF [138TA2758](#)



- Length: 167 mm
- Height: 107,5 mm

Used on A38E, X26N, TM12, M2032/2639-J, EPV16

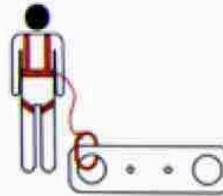
REF [163TA4279](#)



- Length: 162 mm
- Height: 188 mm

Used on TM12, M1230E

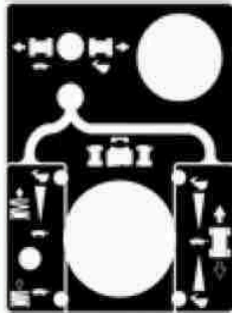
REF [163TA7504](#)



- Length: 50 mm
- Height: 50 mm

Used on SL26SL/SL30SL, A38E, X26N, TM12

REF [138TA2779](#)



- Length: 250 mm
- Height: 296 mm

Used on S1930E/S1932E

REF [165TA4499](#)



- Length: 342 mm
- Height: 115 mm

Used on AB80J-AB85(R)J-A80J-A, TBA50RD, TBA80, TB80

REF [162TA8784](#)



- Length: 551 mm
- Height: 246 mm

Used on TB80J/TB85J

REF [163TA5249](#)



- Length: 595 mm
- Height: 251 mm

Used on PRO66, TB66J

REF [165TA4500](#)

USED ON SNORKEL



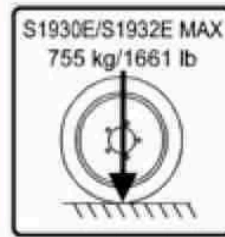
DECALS



- Length: 597 mm
- Height: 252 mm

Used on AB60JRT, ATB60, AB60J

REF [162TA8789](#)



- Length: 50 mm
- Height: 50 mm

Used on S1930E/S1932E

REF [165TA4501](#)

DECALS

USED ON SNORKEL



WHEELS & TYRES

PNEUMATIC TYRE



- Dimensions: 950 x 16,5
- Ply rating: 10 PR
- Quality: tubeless

Used on UN033D/G, UN033E

REF [164TA7024](#)

SOLID TYRE



- Dimensions: 16 x 5 x 8
- Rim width: 8"
- Non-marking

Used on SL25

REF [165TA4505](#)

TRACTION WHEELS



- Diameter wheel: 305 mm
- Number of bolt holes: 5
- Width wheel: 100 mm
- Diameter shaft: 86 mm

Used on SL15, SL19, SL19E, S1930, TM12, M1230E, S1930E/S1932E

REF [165TA4502](#)



- Diameter wheel: 406,4 mm
- Number of bolt holes: 5
- Width wheel: 127 mm
- Diameter shaft: 86 mm

Used on SL20, S2033

REF [164TA7724](#)



- Diameter wheel: 406,4 mm
- Number of bolt holes: 5
- Width wheel: 127 mm
- Diameter shaft: 86 mm

Used on S2646/S3246

REF [165TA4503](#)



- Diameter wheel: 305 mm
- Number of bolt holes: 5
- Width wheel: 102 mm

REF [165TA4506](#)



- Diameter wheel: 304,8 mm
- Number of bolt holes: 2
- Width wheel: 101,6 mm
- Diameter shaft: 33,5 mm

Used on S1930E/S1932E

REF [165TA4504](#)



- Diameter wheel: 305 mm
- Number of bolt holes: 0
- Width wheel: 76 mm
- Diameter shaft: 27 mm

Used on M1230E

REF [145TA9136](#)

USED ON SNORKEL



HUB CAP



- Total length: 11,2 mm
- Inner diameter: 12 mm
- Outer diameter: 59,5 mm

Used on TM12, M1230E

REF [164TA7090](#)

WHEEL BOLT



- Length: 38,3 mm
- Thread type: 1/2" UNF
- Imperial pitch: 20 Pi
- RH/LH: RH

REF [164TA7733](#)

WHEEL NUT



- Type: cone head
- Thread: 9/16" UNF
- RH/LH: RH
- Pitch: 18 Pi
- Wrench opening: 1"

Used on ATB42-50, UN033D/G
4X4, UN041D/G, TB42/TB50,
TB60, PR066,

REF [104TA9936](#)

USED ON SNORKEL



HARDWARE

AXLES/PINS					
	Diameter mm	Total length mm	Hardened	Used on	REF
	12,5	40,2	No	WILDCAT 3000E, BARECAT SERIES, SL15, SL19, SL20, SL25	165TA4507
	15	56	Yes	S3370BE/S2770RT, SR3370/SR2770, SR2770	165TA4508
	15,7	62,3	No	TM12, M1230E	165TA4509
	19,1	127	No	M1230E	165TA4510
	22	80,8	No	TM12, M1230E	164TA6995
	22	110	No	TM12, M1230E	164TA7014

CASTELLATED NUT



- RH/LH thread: RH
- Thread type: 1" UNF
- Pitch: 20 Pi
- Number of slots: 6

Used on TM12, M1230E

REF [165TA4511](#)

USED ON SNORKEL



LOCKING PINS



- Diameter pin: 9,3 mm
- Length without cable: 72,5 mm
- Total length: 275 mm

Used on S3370BE/S2770RT,
AB80J-AB85(R)J-A80J-A,
S1930E/S1932E, SR3370/
SR2770, SL25, S2646/S3246

REF 164TA7208



- Diameter pin: 9,5 mm
- Total length: 72 mm

Used on TB120, TB37, SL20

REF 165TA4512

HARDWARE

USED ON SNORKEL



OTHER PARTS

SERVICE HAND CONSOLE



Calibration/diagnostic tool

Used on TM12, M1230E

REF 165TA4513