

USED ON JLG



HYDRAULIC PARTS

ACTUATORS/POSITION TRANSDUCERS



Voltage: 24 VDC

Used on 25RTS, 120HX, 100SX, 400RTS, 450A, 600A from serial n° 0300000000 to 0300099999, 800A, 450AJ, 800S, 600S, 680S, 601S



REF [165TA4095](#)



Voltage: 11-32 VDC

Used on 450A, 400S, 510AJ



REF [165TA4097](#)



Voltage: 11-32 VDC

Used on 450AJ, 400S, 450A, 600A from serial n° 0300000000 to 0300099999, 800A, E600, 600S, 510AJ, 601S



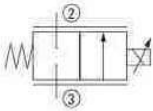
REF [139TA5136](#)

ELECTRIC CARTRIDGES



- Voltage: 12 VDC
- Diameter nose: 19,35 mm

Used on 1250AJP

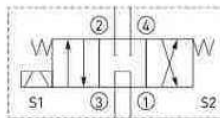


REF [165TA4096](#)



- Voltage: 20 VDC
- Diameter nose: 13 mm

Used on 260MRT, 450A, 450AJ, 510AJ



REF [139TA1802](#)

USED ON JLG



HYDRAULIC PARTS

PRESSURE VALVES (FLOW)



- Thread: M20
- Length: 89,5 mm

Used on 260MRT, 3394RT

REF 165TA4098



- Thread: 1 1/8"
- Length: 81,3 mm

Used on 450A, 450AJ

REF 126TA5598



- Thread: 1 1/16" UNF
- Length: 106 mm

Used on TOUCAN800A,
TOUCAN1210, TOUCAN1010,
TOUCAN861, TOUCAN 870,
TOUCAN1310

REF 126TA5564



- Thread: M27
- Length: 106 mm

Used on 450A, 600A from
serial n° 0300000000 to
0300099999, 800A, 450AJ

REF 126TA5599



- Thread: M20
- Length: 85 mm

Used on 1250AJP, E400A

REF 126TA5600



- Thread: 15/16" SLW
- Length: 105 mm

REF 128TA3185



- Thread: M20
- Length: 86,6 mm

Used on 450A, 510AJ, T350

REF 165TA4099



- Thread: 7/8" SLW
- Length: 108 mm

Used on 400/450A/AJ/AJP
NARROW, E300A/AJ/AJP,
(N)30/35/40/45E

REF 126TA5612

USED ON JLG



PRESSURE VALVES (FLOW)



- Thread: 7/8"
- Length: 86 mm

Used on 450A, 1200SJP, 1250AJP, 510AJ, 1500SJ, 1100S, 1850SJ, 1100SB

REF [138TA7293](#)



- Thread: 1" SLW
- Length: 77,8 mm

Used on 450A, 1200SJP, E600, 1250AJP, 800S, 400S, E300A, E400A, 510AJ, 340AJ, 680S, 600S, 4017, 3507, 400SC

REF [165TA4100](#)



- Thread: M20 x 1,5 mm
- Length: 66 mm

REF [154TA8450](#)

HYDRAULIC PARTS

USED ON JLG



HYDRAULIC PARTS

CARTRIDGE VALVES



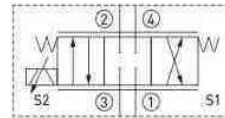
- Width across flats: 15,8 mm
- Length: 117 mm
- Diameter nose: 24 mm

Used on T350, 450A

REF 139TA5142

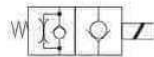


- Width across flats: 22 mm
- Length: 140 mm
- Diameter nose: 12,7 mm



Used on 600S, 25RTS, 450A, 600A from serial n° 0300000000 to 0300099999, 800A, E600, 450AJ, 800S, 400S, 510AJ, 680S, 601S

REF 165TA4104



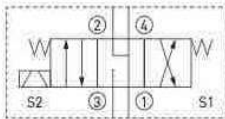
- Width across flats: 7/8"
- Length: 82,7 mm
- Diameter nose: 12,6 mm

Used on 260MRT, 67SL, 26MRT, 100SX, 330CRT, 400RTS, 450A, 600A from serial n° 0300000000 to 0300099999, 800A, 1200SJP, 3369LE, E600, E45A, E400A, 450AJ, 600SC, 800S, 600S, E300A, 400S, G5-18A, 1500SJ, 340AJ, 1100S, 510AJ, 1850SJ, 680S, 644E-42, 3394RT, 1100SB, 601S

REF 165TA4103



- Width across flats: 7/8"
- Length: 140 mm
- Diameter nose: 13 mm



Used on 260MRT, 450A, 330CRT, E300A, 600A from serial n° 0300000000 to 0300099999, 600SC, E45A, E400A, 450AJ, 400S, 600S, 26MRT, 510AJ, 67SL, 601S

REF 165TA4101



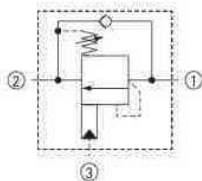
- Width across flats: 7/8"
- Length: 75,5 mm
- Diameter nose: 12,6 mm

Used on SL153-12E, 67SL

REF 165TA4105



- Width across flats: 7/8"
- Length: 86 mm
- Diameter nose: 17,5 mm



Used on 1532E3 from serial n° 0200000000 to 0200999999, 3246E2, 1532E, 1532E2

REF 165TA4102



- Width across flats: 7/8"
- Length: 156 mm
- Diameter nose: 13 mm



Used on 1532E3 from serial n° 0200000000 to 0200999999, 3246E2, 330CRT, 1532E, 3369LE, 1532E2

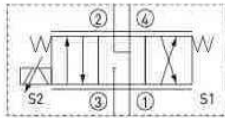
REF 165TA4106

USED ON JLG



HYDRAULIC PARTS

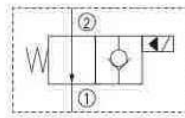
CARTRIDGE VALVES



- Width across flats: 7/8"
- Length: 140 mm
- Diameter nose: 12,7 mm

Used on E300A, 450A, E45A, E400A, 450AJ

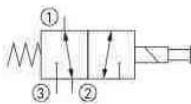
REF 161TA1296



- Width across flats: 7/8"
- Length: 84 mm
- Diameter nose: 12,7 mm

Used on 1930ES

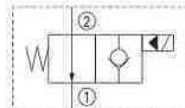
REF 139TA5137



- Width across flats: 7/8"
- Length: 98,4 mm
- Diameter nose: 12,7 mm

Used on 30E, 30 Electric

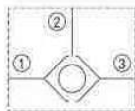
REF 126TA5609



- Width across flats: 7/8"
- Length: 104 mm
- Diameter nose: 15,8 mm

Used on 330CRT, 260MRT, 3369LE

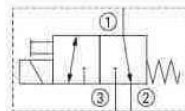
REF 160TA6370



- Width across flats: 7/8"
- Length: 50 mm
- Diameter nose: 50 mm

Used on 120HX, 100SX, 100HX, 400RTS, 534D-9, 544D, G6-42P, 3394RT

REF 165TA4107



- Width across flats: 7/8"
- Length: 91 mm
- Diameter nose: 12,8 mm

Used on 450A, 510AJ

REF 139TA5139

USED ON JLG



HYDRAULIC PARTS

CARTRIDGES WITH COIL								
	Voltage V	AC/DC	Resistance Ω	Diameter 1 mm	Diameter 2 mm	Length mm	Used on	REF
 	10	DC	7,3	33	13	37,2	TOUCAN1210, TOUCAN1310	165TA4108
	12	DC	5,1	44,2	20,5	61,4	25RTS, 400RTS	139TA5141
 	12	DC	8,4	36,2	18,2	40	1250AJP	138TA7284
	12	DC	7,7	43,6	16,4	51	800S, 3394RT, 680S	126TA5576
 	12	DC	7,7	43,6	16,4	51	800S, 680S	165TA4109

USED ON JLG



HYDRAULIC PARTS

CARTRIDGES WITH COIL								
	Voltage V	AC/DC	Resistance Ω	Diameter 1 mm	Diameter 2 mm	Length mm	Used on	REF
	12	DC	27			39	1250AJP	165TA4110
	24	DC	29,4	43,6	16,4	51	1532/2658E, 1532/3246E2, 1532/2658E3, 1532/1932/2033/ 2046/2646/ 2658E, 1532/1932/2032/ 2632/2646/ 3246E2	126TA5575
	24	DC	28,7			47,3		139TA5140
	36	DC	90,5	33	13	37,5	1930ES	126TA5604

Cartridges exist in a variety of dimensions and wiring diagrams. When placing an order, always provide the necessary info with regard to the wiring diagram, as cartridges may have identical dimensions yet be connected in different ways.

Diameter D1 is the nose of the cartridge.
Diameter D2 is the diameter of the cartridge end on which the coil is mounted.

USED ON JLG



HYDRAULIC PARTS

CARTRIDGE VALVE COILS



- Voltage: 20 V
- AC/DC: DC
- Resistance: 24,4 Ω
- Diameter: 13 mm
- Height: 41,2 mm

Used on 1532/3246E2, 1532/1932/2032/2632/2646/3246E2

REF [126TA5596](#)

- Voltage: 12 V
- AC/DC: DC
- Resistance: 10,4 Ω
- Diameter: 33 mm
- Height: 37,5 mm

Used on 1930ES

REF [139TA5133](#)

- Voltage: 12 V
- AC/DC: DC
- Resistance: 10,7 Ω
- Diameter: 33 mm
- Height: 37,4 mm

Used on 600A from serial n° 0300000000 to 0300099999, 600SC, 600S, 26MRT, 400S, 800A, 800S, 400RTS, 1200SJP, E600, 1250AJP, 1500SJ, 1100S, 1100SB, MMV, 601S

REF [139TA5134](#)

- Voltage: 12 V
- AC/DC: DC
- Resistance: 5,1 Ω
- Diameter: 44,2 mm
- Height: 61,4 mm

Used on 160/180ATJ[S][2] E3[RC], 160ATJ PLUS[RC], 450A/AJ, 33/4394RT, 510AJ, 3369/4069LEM3369/M4069

REF [126TA5590](#)

- Voltage: 12 V
- AC/DC: DC
- Resistance: 5,7 Ω
- Diameter: 45 mm
- Height: 51 mm

Used on VM2639E, TOUCAN1210, TOUCAN1010, TOUCAN870, TOUCAN1310, TOUCAN800, TOUCAN910, V2039E, V2642E, VM3242E, TOUCAN800A, TOUCAN 870

REF [139TA5135](#)

- Voltage: 12 V
- AC/DC: DC
- Resistance: 7,6 Ω
- Diameter: 43,5 mm
- Height: 51,1 mm

Used on E400A, E300A, E600, E45A

REF [126TA5594](#)

- Voltage: 12 V
- AC/DC: DC
- Resistance: 7,7 Ω
- Diameter: 43,6 mm
- Height: 51 mm

Used on 1532E3 from serial n° 0200000000 to 0200999999, 3246E2, 1532E, 1532E2

REF [126TA4792](#)

- Voltage: 12 V
- AC/DC: DC
- Resistance: 8 Ω
- Diameter: 44,8 mm
- Height: 36,5 mm

Used on 1930ES

REF [126TA5597](#)

USED ON JLG



CARTRIDGE VALVE COILS

HYDRAULIC PARTS



- Voltage: 24 V
- AC/DC: DC
- Resistance: 20,5 Ω
- Diameter: 45 mm
- Height: 50 mm

Used on 1532/2658E3, 1532/1932/2032/2632/2646/3246E2, 1532/2658E3

REF [126TA5591](#)



- Voltage: 24 V
- AC/DC: DC
- Resistance: 20,8 Ω
- Diameter: 16 mm
- Height: 50 mm

Used on 1930ES

REF [165TA4112](#)



- Voltage: 24 V
- AC/DC: DC
- Resistance: 20,8 Ω
- Diameter: 16 mm
- Height: 50 mm

Used on 260MRT, 800S, 450A, 120HX, 100SX, 330CRT, 400RTS, 1250AJP, 800A, 3369LE, E600, 450AJ, 400S, 600A from serial n° 0300000000 to 0300099999, 600S, 3394RT, 510AJ, 680S

REF [131TA8333](#)



- Voltage: 24 V
- AC/DC: DC
- Resistance: 25,5 Ω
- Diameter: 13 mm
- Height: 38,5 mm

Used on 1532E3 from serial n° 0200000000 to 0200999999, 3246E2, 1532E, 67SL, 1532E2

REF [165TA4113](#)



- Voltage: 24 V
- AC/DC: DC
- Resistance: 25,7 Ω
- Diameter: 13 mm
- Height: 38,5 mm

Used on 67SL, 1532E3 from serial n° 0200000000 to 0200999999, 1532E

REF [165TA4111](#)



- Voltage: 24 V
- AC/DC: DC
- Resistance: 29,4 Ω
- Diameter: 43,6 mm
- Height: 51 mm

Used on LIFTLUX 203-24, 80SL, 1532/2658E2

REF [160TA4763](#)



- Voltage: 24 V
- AC/DC: DC
- Resistance: 39,8 Ω
- Diameter: 33 mm
- Height: 37,5 mm

Used on LIFTLUX 203-24, 80SL, 1532/2658E2

REF [155TA1598](#)

USED ON JLG



HYDRAULIC PARTS

COUPLINGS



- Height: 34 mm
- Outer diameter: 216 mm
- Inner diameter: 25,8 mm

Used on TOUCAN800A, TOUCAN1010

REF [126TA4811](#)



- Height: 68 mm
- Outer diameter: 19 mm
- Inner diameter: 6,5 mm

Used on 260MRT, 800S, 26MRT, 25RTS, 400RTS, 600A from serial n° 0300000000 to 0300099999, 450A, 600SC, 800A, 1200SJP, 3369LE, E600, 1250AJP, 450AJ, 400S, 600S, E400A, 3394RT, 510AJ, 1500SJ, 340AJ, 1100S, G9-43A, 534D-9, 544D, 680S, G6-42P, G6-42A, G10-55A, 1100SB, TF6-42, 601S, 400SC

REF [165TA4114](#)

USED ON JLG



HYDRAULIC INTEGRATED CIRCUITS WITH CARTRIDGE



- Length: 89 mm
- Width: 76 mm
- Height: 31 mm

Used on 3369ELECTRIC, E300A, E45A, E400A, 800S, 400S, E600

REF [139TA5143](#)



- Length: 90 mm
- Width: 80 mm
- Height: 49,5 mm

Used on SL153-12E

REF [165TA4118](#)



- Length: 230 mm
- Width: 60 mm
- Height: 30 mm

Used on 1930ES

REF [165TA4115](#)



- Length: 83 mm
- Width: 75 mm
- Height: 63 mm

Used on 450A, E45A, E400A, 450AJ, T350, 800A

REF [165TA4119](#)



- Length: 155 mm
- Width: 63,8 mm
- Height: 51 mm

Used on 600S, 150HAX, 30E, E300A, 450A, 600A from serial n° 0300000000 to 0300099999, 600SC, 800A, 1200SJP, E600, E45A, E400A, 450AJ, 800S, 400S, 30electric, 680S, 601S

REF [165TA4116](#)

HYDRAULIC BRAKES



- Neck diameter: 101,5 mm
- Axle diameter: 41,3 mm
- Number of teeth: 13

Used on E600

REF [165TA4117](#)



- Neck diameter: 101,5 mm
- Axle diameter: 22 mm
- Number of teeth: 13

Used on CM1432, 30E, 3369ELECTRIC, 30electric, CM2033

REF [165TA4120](#)

HYDRAULIC PARTS

USED ON JLG



HYDRAULIC PARTS

HYDRAULIC CYLINDERS



- Steering cylinder
- Total measured length: 472 mm
- Diameter tube: 70 mm
- Diameter rod: 35 mm

Used on 600S, 600A from serial n° 0300000000 to 0300099999

REF 165TA4121



- Steering cylinder
- Total measured length: 580 mm
- Diameter tube: 86 mm
- Diameter rod: 38 mm
- Piston shaft stroke: 272 mm

Used on TOUCAN1210, TOUCAN1010, TOUCAN870, TOUCAN800A, TOUCAN1310, TOUCAN800, TOUCAN910, V2642E, TOUCAN 870

REF 165TA4125



- Steering cylinder
- Total measured length: 800 mm
- Diameter tube: 76,5 mm
- Diameter rod: 44,45 mm

Used on EM450A/AJ, Z/M400/450A/AJ/AJP/NARROW

REF 165TA4122



- Steering cylinder
- Total measured length: 570 mm
- Diameter tube: 73 mm
- Diameter rod: 32 mm

Used on E400A, E45A

REF 165TA4126



- Steering cylinder
- Total measured length: 660 mm
- Diameter tube: 82 mm
- Diameter rod: 44,45 mm

Used on 1930ES

REF 165TA4123



- Tilt cylinder or double acting
- Total measured length: 405 mm
- Diameter tube: 48 mm
- Diameter rod: 19 mm
- Piston shaft stroke: 157 mm

Used on 800A, 800S, 680S

REF 165TA4127

PART OF HYDRAULIC CYLINDER



- Diameter: 228 mm
- Width: 66,5 mm

REF 165TA4124

HYDRAULIC HOSE



- Length: 4950 mm
- Pressure: 3250 bar

Used on E600

REF 165TA4128

USED ON JLG

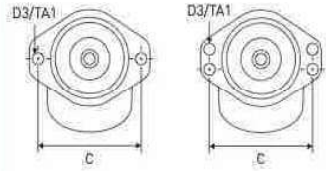


HYDRAULIC PARTS

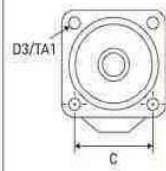
HYDRAULIC MOTORS

Type of flange

Type A

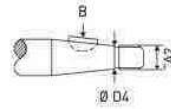


Type C

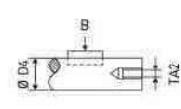


Type of shaft

Type E



Type F



	Thread connections	Type of flange	Type of shaft	Total length mm	Used on	REF
	1/2" BSP + 1/4" BSP	C	E	300	3246E2, 1532E3 from serial n° 0200000000 to 0200999999, 1532E2	151TA1080
	7/8" UNF	A	F	181	1532E3 from serial n° 0200000000 to 0200999999	165TA4129
	7/8" UNF	C	E	235	3246E2, 1532E3 from serial n° 0200000000 to 0200999999, 1532E2	124TA5518
	7/8" UNF	C	F	270	25RTS, 400RTS, 450A, 450AJ	131TA6886
	9/16" UNF	C	E	223	450A, 450AJ	131TA6835
	9/16" UNF	C	E	269	450A, E400A	165TA4130
	9/16" UNF	C	E	271	TOUCAN870, TOUCAN800A, TOUCAN800, TOUCAN861, TOUCAN 870	165TA4131

USED ON JLG



HYDRAULIC PARTS

HYDRAULIC PUMPS



- Total length: 125 mm
- Neck diameter: 82,5 mm
- Direction of rotation: CCW
- Material of housing: aluminium

Used on 3369ELECTRIC

REF 165TA4132



- Total length: 210 mm
- Neck diameter: 82,5 mm
- Direction of rotation: CW
- Material of housing: aluminium

Used on 30E, 30electric, 15DVL, 10VP

REF 165TA4135



- Total length: 308 mm
- Neck diameter: 101,5 mm
- Direction of rotation: CW
- Material of housing: metal

Used on 1930ES

REF 165TA4133



- Total length: 308 mm
- Neck diameter: 101,6 mm
- Direction of rotation: CW
- Material of housing: metal

Used on 740AJ, 800A/800AJ, 800S/860SJ, 680S

REF 165TA4136



- Total length: 72,2 mm
- Neck diameter: 32 mm
- Direction of rotation: CCW
- Material of housing: aluminium

Used on 25RTS, 120HX, 100SX, 400RTS, 450A, 600A from serial n° 0300000000 to 0300099999, 450AJ, 600S, 601S

REF 118TA5574



- Total length: 83,5 mm
- Neck diameter: 45,2 mm
- Direction of rotation: CCW
- Material of housing: metal

Used on E300A, E45A, E400A

REF 139TA5120



- Total length: 87,4 mm
- Neck diameter: 52 mm
- Direction of rotation: CCW
- Material of housing: aluminium

Used on 450A, 800A, 400S, 600SC, 800S, 510AJ, 680S

REF 139TA5119



- Total length: 87,8 mm
- Direction of rotation: CW
- Material of housing: aluminium

Used on TOUCAN800A, 67SL, TOUCAN1210, TOUCAN1100A, TOUCAN1010, TOUCAN861, TOUCAN 870, TOUCAN1310

REF 165TA4137



- Total length: 92,5 mm
- Neck diameter: 32 mm
- Direction of rotation: CW
- Material of housing: aluminium

Used on 450A, 510AJ

REF 165TA4134



- Total length: 258 mm
- Neck diameter: 101,6 mm
- Direction of rotation: CW
- Material of housing: metal

Used on 1250 AJP, 1500 SJ, 1200 SJP, 1350 SJP, 1100SB, 1100 SJ, 1100 SJP

REF 165TA4138

USED ON JLG



HYDRAULIC PARTS

REPAIR KITS HYDRAULIC PUMP



Used on VM2639E, TOUCAN1010, TOUCAN910, TOUCAN870, TOUCAN800A, TOUCAN800, TOUCAN DUO, V2039E, V2642E, VM3242E, TOUCAN 870, 13MSPT

REF [160TA9903](#)



Used on 1500SJ, 1100S, 1850SJ, 1200SJP, 1100SB

REF [160TA9603](#)

HYDRAULIC PUMP GROUPS

	Electric motor VDC	Power kW	Used on	REF
	24	0,8	VM2639E, TOUCAN1210, TOUCAN1100, TOUCAN1310, TOUCAN800, V2039E, VM3242E, TOUCAN860, TOUCAN1100A, TOUCAN861	139TA5118
	24	0,8	120HX, 100SX, 600A from serial n° 0300000000 to 0300099999, 600SC, 3369ELECTRIC, 600S, 1500SJ, 1850SJ, 1200SJP, 1100SB, 601S, 400SC	165TA4139
	24	1	TOUCAN JUNIOR 6/8B, 13MSPT/TOUCAN DUO, TOUCAN JUNIOR 6, TOUCAN JUNIOR 8	165TA4140

USED ON JLG



HYDRAULIC PARTS

HYDRAULIC PUMP GROUPS				
	Electric motor VDC	Power kW	Used on	REF
	48	1,6	(N)30/35/40/45E	165TA4141
	24	3	TOUCAN800A, TOUCAN1010, TOUCAN 870	139TA5117
	24	3	E300A	105TA2721
	48	3,9	600S	165TA4142

HYDRAULIC OIL TANK



- Overall length: 345 mm
- Outer diameter: 120 mm

Used on 1930ES

REF [165TA4143](#)

USED ON JLG



HYDRAULIC VALVES



- Number of elements: 1
- Number of plungers: 1
- Length: 142,5 mm
- Diameter plungers: 15,87 mm

Used on 800A

REF 126TA4791



- Number of elements: 1
- Number of plungers: 1
- Length: 32 mm
- Diameter plungers: 16 mm

Used on E300A, 450A, 600A from serial n° 0300000000 to 0300099999, 450AJ, 1500SJ, 1850SJ

REF 165TA4145



- Number of elements: 1
- Number of plungers: 1
- Length: 60 mm

Used on 600S, 150HAX, 26MRT, 100HX, 100SX, 400RTS, 30E, 600A from serial n° 0300000000 to 0300099999, E300A, 450A, 600SC, 800A, 1532E, 1200SJP, E600, E45A, E400A, 1250AJP, 450AJ, 800S, 400S, 30electric, 1500SJ, 1100S, 1100SB, 601S

REF 165TA4144

HYDRAULIC PARTS

SHAFT PISTONS



- Inner thread - pistonhead - outer thread
- Length: 660 mm
- Diameter: 44,5 mm

Used on 30E, 3369ELECTRIC, 30electric

REF 126TA5614



- Outer thread - eye
- Length: 503 mm
- Diameter: 31,75 mm

Used on 450A, 510AJ

REF 165TA4146



- Outer thread - eye
- Length: 545 mm
- Diameter: 32 mm

Used on 510AJ, 450A/AJ, 450A/AJ SERIES II

REF 139TA5145