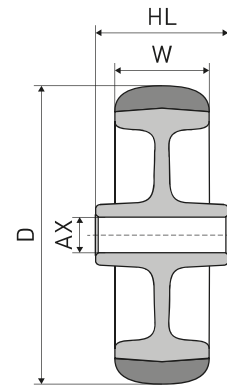
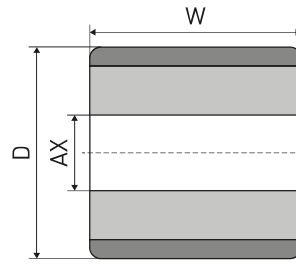




NYLON ROLLERS WITH FULL-BORE

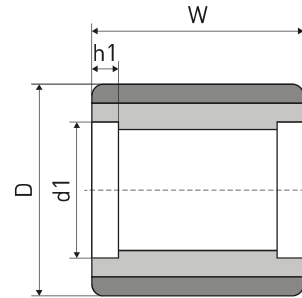


D x W	HL	AX	REF
20 x 10	12,5	9	147TA4637
20 x 16	17,5	9	147TA4638
20 x 30	30	7	147TA4639
25 x 15	15	8	129TA9159
27 x 20	20	10,4	129TA9161
30 x 9,5	9,5	10	129TA9162
30 x 20	20	10,4	147TA4640
32 x 20	24	10	129TA9503
32 x 30	30	8,8	147TA4641
34 x 34	38	8	139TA7657
34 x 50	50	20,5	129TA9163
34 x 54	54	20	128TA4404
37 x 20	20	11,2	147TA4642
38 x 36	36	11	129TA9167
38 x 46	46	17,3	107TA6772
38 x 47	47	20,5	129TA9168
38 x 62	62	20,25	147TA4643
39 x 37	37	17,5	129TA9169
40 x 16	16	20	147TA4644
40 x 36	38	11,5	129TA9172
40 x 63	63	20	105TA2327
41 x 25	25	20	129TA9177
42,5 x 39	39	12,3	129TA9178
44 x 17,5	18,3	18,7	138TA4546
44 x 20	20	19	147TA4645
45 x 18	18	14	107TA2885
45 x 19	20	13	139TA5205
45 x 33	33	19,5	129TA9181
45 x 45	40	12,8	140TA7660
46 x 20	20	15	107TA2886
47 x 29	36,5	12	107TA6922
49 x 24	25	15,4	124TA6768
49,5 x 36	36,5	8,2	129TA9183
50 x 10	10	6	147TA4646
50 x 22	22	8,5	147TA4647

D x W	HL	AX	REF
50 x 26	28	8,5	124TA5629
50 x 30	36	6,5	147TA4648
50 x 32	34	14	107TA2890
50 x 35	50	18,2	129TA9512
60 x 27	38	6	147TA4649
60 x 110	110	20	129TA9191
63 x 33	36	22,2	139TA1841
66 x 53	53	20,5	129TA9197
75 x 25	25	26	147TA4650
75 x 40	45	25	147TA4651
75 x 40	45	30	147TA4652
75 x 103	103	30	147TA4653
76 x 32	35	20	107TA3146
76 x 47	47	40	124TA6960
78 x 100	100	13	139TA8149
80 x 20	10	16,5	139TA7659
80 x 35	35	30	147TA4654
80 x 50	53	25	147TA4655
80 x 56	56	35	147TA4656
81 x 35	35	34	147TA4657
82 x 60	60	44	108TA8502
85 x 30	30	55	147TA4658
85 x 75	75	42	107TA7831
85 x 100	100	42	105TA4633
90 x 45	45	30	147TA4659
90 x 57	57	30	147TA4660
90 x 57	57	35	147TA4661
93 x 30	30	55	147TA4662
93 x 50	50	55	131TA9230
98 x 45	45	39	124TA6962
100 x 27	27	12	147TA4663
100 x 42	46,5	30	147TA4664
100 x 49	53	28	147TA4665
120 x 58	58	30	147TA4666



NYLON ROLLERS WITHOUT BEARINGS



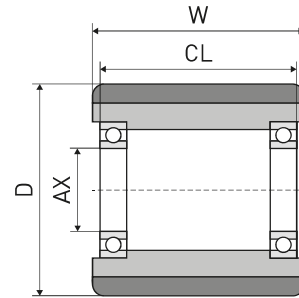
D x W	d1 x h1	Remark	REF
35 x 60	28 x 16		147TA4667
50 x 30	35 x 10		147TA4668
50 x 62	35 x 13		107TA2892
55 x 70	40 x 15		107TA2894
57 x 67	35 x 13		107TA2896
58 x 70	42 x 12		129TA9188
60 x 78	42 x 12		147TA4669
70 x 70	47 x 14		147TA4670
74 x 70	47 x 14		144TA8906
74 x 93	47 x 14		147TA4671
75 x 50	47 x 14		129TA9203
75 x 65	47 x 14		107TA2902
75 x 67	47 x 14		147TA4672
75 x 73	47 x 14		110TA8519
75 x 75	47 x 16		129TA9209
75 x 90	47 x 14		147TA4673
75 x 94	47 x 14		110TA8520
77 x 60	47 x 22		129TA9217
78 x 70	47 x 23	R	107TA6928
78 x 72	47 x 24	R	139TA9790
78 x 94	47 x 25	R	107TA6910
80 x 50	47 x 14		107TA2904
80 x 54	47 x 14		107TA2905
80 x 55	47 x 22		147TA4674
80 x 70	47 x 14		147TA4675
80 x 80	47 x 16		129TA9239
80 x 93	47 x 14		129TA9242
80 x 98	47 x 14		122TA8892
82 x 60	47 x 14		147TA4676
82 x 60	47 x 16		115TA5847
82 x 62	47 x 13		107TA2906
82 x 64	47 x 14		124TA2245
82 x 67	47 x 14		147TA4677

D x W	d1 x h1	Remark	REF
82 x 69	47 x 12		129TA9283
82 x 70	47 x 14		107TA2907
82 x 72	47 x 12		107TA2908
82 x 72	47 x 14		147TA4678
82 x 75	42 x 21	INS	124TA6773
82 x 78	47 x 22		107TA2910
82 x 86	47 x 14		129TA9293
82 x 90	47 x 14		129TA9296
82 x 91	47 x 12,5		147TA4679
82 x 96	52 x 14		147TA4680
82 x 98	47 x 12		147TA4681
82 x 100	47 x 12		147TA4682
82 x 100	47 x 14		147TA4683
82 x 100	47 x 16		128TA4344
82 x 105	47 x 14		121TA1018
83 x 98	42 x 22	INS	129TA9328
83 x 115	62 x 17		107TA7826
84 x 75	42 x 12		124TA2426
84 x 90	42 x 12,5		124TA2396
85 x 60	47 x 12		107TA7828
85 x 68	47 x 14		129TA9366
85 x 70	47 x 14		107TA7841
85 x 75	42 x 23		107TA7830
85 x 75	47 x 14		107TA2909
85 x 75	47 x 32		107TA7832
85 x 80	47 x 14		107TA7833
85 x 85	47 x 14		147TA4684
85 x 85	52 x 15		107TA7835
85 x 90	47 x 14		107TA7836
85 x 95	47 x 15		129TA9420
85 x 110	47 x 32		107TA7838
100 x 70	42 x 24		107TA7839

For bearings see page 275



NYLON ROLLERS WITH BEARINGS

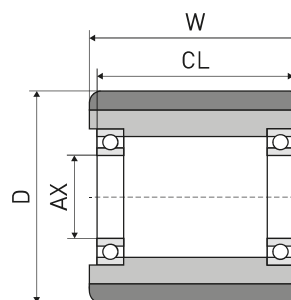


D x W	CL	AX	Bearing	Remark	REF
40 x 19	19	10	6000-		147TA4686
50 x 62	63,5	10	6003-	BS	129TA9185
50 x 70	70	17	6003-	4L	147TA4687
55 x 58	58	20	6204-		147TA4688
55 x 70	63	17	6203-		124TA6934
57 x 67	69	12,5	6003-	BS	129TA9186
58 x 64	67	19	6204-RSE		147TA4689
58 x 70	70	20	6004-		124TA6966
59 x 104	83,8	20	6004-		147TA4690
60 x 78	78	20	6004-		129TA9190
61 x 59	49	20	6204-		129TA9192
66 x 47	47	15	6303-		147TA4691
70 x 70	70	20	6204-		147TA4692
73 x 96	96	20	6204-		123TA8515
74 x 70	70	20	6204-(SS)	SSB	147TA4693
74 x 93	93	20	6204-(SS)	SSB	147TA4694
75 x 65	61	20	6204-		107TA2915
75 x 67	67	20	6204-		147TA4695
75 x 70	70	20	6204-		129TA9207
75 x 73	75	20	6204-		123TA8528
75 x 74	77	17	6303-ZV		107TA2916
75 x 75	71	17	6303-		129TA9210
75 x 75	76	17	6303-ZV(SS)	SSB	129TA9211
75 x 75	75	20	6204-		139TA9539
75 x 90	90	20	6204-		147TA4696
75 x 98	101	17	6303-ZV		107TA2917
77 x 60	44	20	6204-		129TA5612
78 x 70	58	20	6204-	R	129TA9218
80 x 50	50	20	6204-		107TA2918
80 x 54	60	20	6204-ZV		129TA9226
80 x 70	70	20	6204-		129TA9235
80 x 80	79	20	6204-		129TA9220
80 x 86	88	20	6204-		147TA4697
80 x 90	95	20	6204-ZV		107TA2919
80 x 90	90	20	6204-(SS)	SSB	147TA4698
80 x 98	103	17	S6303-ZV	SSB	129TA9244
82 x 59	59	20	6204-		147TA4699
82 x 59	59	20	6204-(SS)	SSB	147TA4700
82 x 59	59	20	6204-		147TA4701
82 x 60	56	20	6204-		124TA6765
82 x 60	60	20	6204-		129TA9260
82 x 60	60	20	6204-		147TA4702

D x W	CL	AX	Bearing	Remark	REF
82 x 64	64	20	6204-		107TA2921
82 x 64	64	20	6204-		107TA6860
82 x 64	64	20	6204-(SS)	SSB	129TA9263
82 x 65	69	20	6204-		147TA4703
82 x 67	67	20	6204-		124TA5642
82 x 67	67	20	6204-		124TA5640
82 x 68	66	20	6204-		147TA4704
82 x 68	66	20	6204-(SS)	SSB	147TA4705
82 x 69	73	20	6204-		129TA9273
82 x 69	69	20	6204-		129TA9271
82 x 69	62	20	6204-		147TA4706
82 x 70	70	17	6303-		107TA2923
82 x 70	70	20	6204-		107TA2924
82 x 70	64	20	6204-		119TA9891
82 x 70	74	20	6204-ZV		124TA5729
82 x 70	70	20	6204-(SS)	SSB	147TA4707
82 x 70	68	25	6005-		107TA2925
82 x 72	78	20	6204-ZV		107TA2926
82 x 82	82	20	6204-		129TA9292
82 x 82	82	20	6204-		147TA4248
82 x 83	83	20	6204-		139TA9587
82 x 86	86	20	6204-		129TA9294
82 x 90	92	20	6204-ZV		128TA4390
82 x 90	90	20	6204-		147TA4708
82 x 91	96	20	6204-ZV		147TA4709
82 x 98	101	17	6303-ZV	INS	107TA2928
82 x 98	104	20	6204-ZV		147TA4710
82 x 98	98	20	6005-	BS	107TA6853
82 x 98	98	20	6204-		124TA8619
82 x 100	102	17	22053-(BT)	INS	107TA2940
82 x 100	100	20	6204-		107TA2929
82 x 100	105,5	20	6204-ZV		129TA9317
82 x 100	104	20	6204-ZV		107TA2930
82 x 100	100	25	6005-		107TA2931
82 x 105	105	20	6204-(SS)	SSB	107TA2932
82 x 105	105	20	6204-		147TA4711
83 x 63	70	20	6204-ZV		147TA4712
82,5 x 90,5	94,5	20	6204-		129TA9326
84 x 56	60	20	6204-ZV		147TA4713
84 x 73	77	17	6303-ZV(SS)	SSB	129TA9333
85 x 60	64	20	6204-		107TA2933
85 x 60	65	25	6005-ZV		107TA2934



NYLON ROLLERS WITH BEARINGS

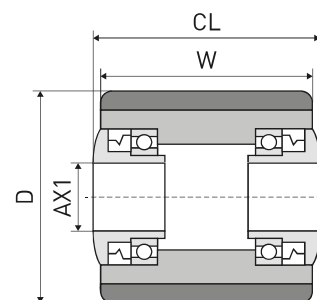


D x W	CL	AX	Bearing	Remark	REF
85 x 68	68	20	6204-		147TA4714
85 x 70	70	20	6204-		147TA4715
85 x 75	77	17	22053-(BT)		129TA9391
85 x 75	75	20	6204-		129TA9392
85 x 80	80	20	6204-		124TA6761
85 x 80	72	25	6205-		147TA4716
85 x 85	85	20	6204-		107TA2938
85 x 90	90	17	6303-		119TA9898
85 x 90	90	20	6204-		107TA2939

D x W	CL	AX	Bearing	Remark	REF
85 x 90	90	20	6204-		147TA4717
85 x 95	100	20	6204-ZV		107TA2942
85 x 100	102	17	22053-(BT)SS	SSB+INS	129TA9430
85 x 102	102	20	6204-		139TA9808
85 x 120	124	25	Not spec.		129TA9441
86 x 70	75	20	6204-ZV		107TA2941
98 x 82	80	30	6206-		147TA4718
100 x 50	54	20	6204-ZV		107TA3162



NYLON ROLLERS WITH SEALED BEARINGS



D x W	CL	AX	Bearing	Remark	REF
55 x 75	77	20	WP		124TA6760
55 x 100	102	20	OTS		147TA4719
78 x 70	72	20	WP		139TA9807
78 x 94	77	20	OTS		126TA6225
82 x 60	64	20	WP		129TA9258
82 x 65	70	20	WP		129TA9266
82 x 97	100	17	WP		139TA9733
82 x 98	104	20	WP	BS	129TA9318

D x W	CL	AX	Bearing	Remark	REF
82 x 100	104	20	OTS		107TA6776
84 x 68	74,5	20	WP		139TA9799
84 x 70	75,5	20	WP	BS	129TA9332
84 x 75	80	20	OTS		147TA4720
85 x 59	61	17	L		129TA9349
85 x 65	70	20	L		107TA2922
85 x 75	78	17	L		107TA2936
100 x 50	56	20	WP		129TA9458