

USED ON HAULOTTE



HYDRAULIC PARTS

ACTUATORS/POSITION TRANSDUCERS



- Voltage: 11-32 VDC
- Total length: 117 mm
- Length: 92 mm
- Width: 45 mm
- Height: 107 mm

Used on HA16PXNT, HA18PXNT, H43TPX, HTB180, H21TX, HA16PX, HA16SPX, HA16X, HA20PX, HA41PX-NT

REF 138TA7301



- Voltage: 11-32 VDC
- Total length: 120 mm
- Length: 92 mm
- Width: 45 mm
- Height: 107 mm

Used on HA16DX

REF 138TA7302



- Voltage: 11-32 VDC
- Total length: 120 mm
- Length: 92 mm
- Width: 45 mm
- Height: 107 mm

Used on JLG4013PS

REF 138TA7304



Voltage: 12 VDC

Used on HA16PXNT, HA18PXNT, P90

REF 160TA4052

SPOOL



- Length: 159 mm
- Diameter: 18 mm

Used on HA18PX, HA51SJRT, HT43RTJPRO, HT132RT, HA16/18SPX, HA46/51S, HA16/18PX, HA46/51J, HA18(X), HA51RJT, HA16P(X/D/N), HA46JRT, HA51X

REF 160TA2300

ELECTRIC CARTRIDGES



Voltage: 12 VDC

Used on H21TX, HA16PX, HA16SPX, HA16X, HA20PX

REF 160TA1514



Voltage: 24 VDC

Used on HA16DX, HA16D 4X4, HA16D

REF 138TA7288

USED ON HAULOTTE

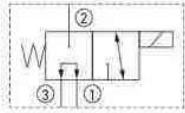


HYDRAULIC PARTS

CARTRIDGE VALVES



- Width across flats: 25,4 mm
- Length: 117 mm
- Diameter nose: 12,7 mm

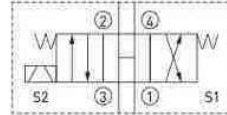


Used on COMPACT12, COMPACT8W, COMPACT8, COMPACT10

REF 160TA3298



- Width across flats: 25,4 mm
- Length: 175 mm
- Diameter nose: 16 mm

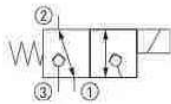


Used on COMPACT8W/2047E/12/3, COMPACT8/10N/2032E/26, COMPACT10/2747E, COMPACT10

REF 138TA7298



- Width across flats: 24 mm
- Length: 125 mm
- Diameter nose: 19 mm

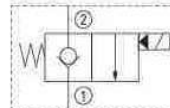


Used on STAR 8

REF 160TA3128



- Width across flats: 22,2 mm
- Length: 106 mm
- Diameter nose: 12,7 mm

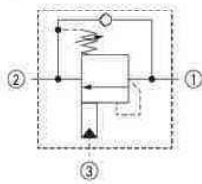


Used on COMPACT8, COMPACT8W, COMPACT10, COMPACT10RTE, COMPACT12, COMPACT10N

REF 138TA7295



- Width across flats: 22,2 mm
- Length: 86 mm
- Diameter nose: 21,7 mm

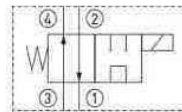


Used on HA16SPX, HA12PX, HA15X, HA16PX, HA18PXNT, HA18PX, HA16PXNT, HA16P, HA18P, HA20PX, H16TPX, HA26PX, HA12IP, HA15IP, HA12CJ, HTB180, H21TX, HA16X

REF 138TA7296



- Width across flats: 1"
- Length: 122,5 mm
- Diameter nose: 18,9 mm



Used on COMPACT12, COMPACT8W, COMPACT8, COMPACT10

REF 160TA3857

USED ON HAULOTTE



CETOP VALVES



- Length: 124 mm
- Width: 44,5 mm
- Height: 40,2 mm

Used on HA16PXNT, HA18PXNT

REF 160TA3497



- Voltage: 24 V
- Length: 207 mm

Used on HM8, HA12I, HA20P, H960E

REF 138TA7289



- Length: 83 mm
- Width: 44 mm
- Height: 38,6 mm

Used on HA26PX, HA80JRT, HA61JRT, HA26P, HA20P, HA18PXNT, HA51JRT, HA16PXNT, HA46JRT

REF 165TA3965



- Length: 78 mm
- Width: 45,8 mm
- Height: 52 mm
- Total length: 222 mm

REF 131TA9520

PRESSURE VALVES (FLOW)



- Thread: 7/8"
- Length: 85,7 mm

Used on HA18PX, HA51SJRT, HA20RTJ, HA20RTJP, HA16/18SPX, HA46/51S, HA14X-16TPX, HB40-4, HA120PX, HA12IP, HA16X, HA46RT, HA16/18PX, HA46/51J, HA51I, HA43E, HA15IP, HA16DX, HA16D, HA16D 4X4, HA15I, HA33JE, HA16TPX, HB44J, HA26PX, HA80JRT, HA20PX, HA61JRT, HA26P, HA20P, HA18P(X), HA16(X/D/N), HA46RTJ, HA15X

REF 160TA4059



- Thread: 7/8"
- Length: 65,3 mm

Used on HA16SPX, HA12PX, HA15X, HA16PX, HA18PXNT, HA18PX, HA16PXNT, HA16P, HA18P, HA12IP, HA15IP, HA12CJ, H43TPX, HTB180, H21TX, HA20PX, HA41PX-NT

REF 138TA7291



- Thread: 1 5/16" UNF
- Length: 104,8 mm

REF 160TA3192

USED ON HAULOTTE



HYDRAULIC PARTS

PRESSURE VALVES (FLOW)



- Thread: 1 5/16" UNF
- Length: 130,6 mm

Used on HA20PX

REF 138TA7297



- Thread: 3/8"
- Length: 138 mm

Used on HA15IP, HA16PX, H21TX, HA16SPX, HA16X, HA20PX, HA12IP

REF 160TA3173



- Thread: 1/2"
- Length: 132 mm

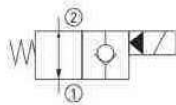
Used on HA32PX, HA41PX-NT

REF 160TA2788

CARTRIDGES WITH COIL



- Voltage: 12 V
- AC/DC: DC
- Resistance: 8,5 Ω
- Diameter1: 12,6 mm
- Diameter2: 12,6 mm
- Length: 91 mm

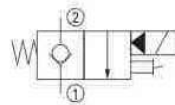


Used on HA16PXNT, HA18PXNT, H43TPX, HTB180, H21TX, HA16PX, HA16SPX, HA16X, HA20PX, HA41PX-NT

REF 138TA7282



- Voltage: 24 V
- AC/DC: DC
- Resistance: 28,7 Ω
- Diameter1: 12,6 mm
- Diameter2: 12,6 mm
- Length: 126 mm

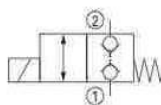


Used on COMPACT8, COMPACT10, COMPACT14

REF 138TA7283



- Voltage: 12 V
- AC/DC: DC
- Resistance: 8,4 Ω
- Diameter1: 17,9 mm
- Diameter2: 12,6 mm
- Length: 90 mm



Used on HA41PX-NT

REF 138TA7284

Cartridges exist in a variety of dimensions and wiring diagrams. When placing an order, always provide the necessary info with regard to the wiring diagram, as cartridges may have identical dimensions yet be connected in different ways.

Diameter D1 is the nose of the cartridge. Diameter D2 is the diameter of the cartridge end on which the coil is mounted.

USED ON HAULOTTE



CARTRIDGE VALVE COILS							
	Voltage V	AC/DC	Resistance Ω	Diameter mm	Height mm	Used on	REF
	24	DC	29,4	43,6	51	COMPACT8, COMPACT10, COMPACT12	160TA4763
	10	DC	7,3	33	37,5	HA16PX, HA20PX	160TA3521
	12	DC	4,7	45,8	56,5	COMPACT10DX, COMPACT12DX	160TA3378
	12	DC	5	45	52	HA18PXNT, HA16PXNT, HA16PX	131TA8236
	12	DC	5	45,3	56	H21TX, HA16SPX, HA16X, HA20PX	160TA2729
	12	DC	5,7	45	51	STAR12, STAR11, STAR9	138TA7306
	12	DC	8,4	36,2	40	COMPACT10DX	131TA8058

HYDRAULIC PARTS

USED ON HAULOTTE



HYDRAULIC PARTS

CARTRIDGE VALVE COILS							
	Voltage V	AC/DC	Resistance Ω	Diameter mm	Height mm	Used on	REF
	14	DC	8,1	45	51,8	STAR12, STAR11, HA16X, HA16SPX, HA20PX, H12SX	138TA7309
	24	DC	29,4	43,6	51	COMPACT12, COMPACT8W, COMPACT8, COMPACT10	165TA3966
	28	DC	23	40,5	38,8	STAR8, STAR10	160TA3860
	24	DC	28,7		38,5	STAR8(22J), STAR10(26J)	138TA7308
	24	DC	19,2		50	STAR 8	160TA3575
	24	DC	25,4		51	COMPACT8W/2047E/12/3, COMPACT8/10N/2032E/26, COMPACT10/2747E, COMPACT10, COMPACT14, COMPACT3	131TA9561

USED ON HAULOTTE



FITTINGS FOR HYDRAULIC CIRCUITS

HYDRAULIC PARTS



Adapter 1/4" BSP

Used on LPE/LPMSTAR6P,
STAR6, STAR8[22J], STAR10[26J]

REF [160TA2542](#)

Adapter 3/4" JIC

Used on HA12I, HA15I, H21T,
HA18PXNT, HA16PXNT, HA16P,
HA16DX, HA26PX, HA20P,
HA26P, H23T, H25TP, HA260PX,
HA16D 4X4, HA16D, H21TX, P90

REF [124TA3671](#)

Adapter 7/16" JIC

Used on HM8, HM10P,
HA120PX, HA12IP, HA33JE,
COMPACT10-12/2668-336,
HA18PX, HA51SJER,
STAR8/22J/1026J, HA16/18SPX,
HA46/51S, H14TX-16TPX,
HB40-4, HA16/18PX, HA46/51J,
HA20/260PX, HA61/80J,
HA120PX, STAR8/10, HA12IP,
H21TX/23/25TPX/HB62/68

REF [160TA1765](#)

Adapter 9/16" JIC

Used on HA16SPX, COMPACT12,
H12SX, HA12I, COMPACT10,
COMPACT8, STAR10,
COMPACT8W, H12SD, HA12PX,
HA15I, HA15D, HA16PX,
HA18PX, HA16PXNT, HA16P,
HA16DX, HA18P, HA20P,
H16TPX, H18DX, COMPACT12DX,
H15SD, COMPACT8DX,
COMPACT10DX

REF [124TA3668](#)

Adapter 9/16-18" JIC

Used on HA16SPX, COMPACT10,
COMPACT8W, H12SX,
COMPACT10N, COMPACT12,
HA12I, STAR10, COMPACT8,
H12SD, OPTIMUM6, HA12PX,
HA15I, HA15D, H21T, HA15X,
HA16PX, HA18PX, HA16PXNT,
HA18PXNT, HA16P, HA16DX,
HA20P, HA18P, HA26PX,
HA20PX, HA26P, H16TPX

REF [160TA3162](#)

USED ON HAULOTTE



HYDRAULIC PARTS

HYDRAULIC INTEGRATED CIRCUIT WITH CARTRIDGES



- Total length: 91,9 mm
- Width: 50 mm
- Height: 27,9 mm

Used on HA12I, HA15D, H21T, HA15X, HA16PXNT, HA18PXNT, HA16P, HA16DX, HA20P, HA18P, HA26P, HA20PX, H16TPX, HA26PX, H23T, H25TP, HA12IP, HA15I, HA16D 4X4, HA16D, HA12PX, HA16PX, HA18PX, HA32P, HA15IP

REF [138TA7299](#)



- Voltage: 12 V
- Total length: 185 mm
- Width: 62,8 mm
- Height: 87 mm

Used on H21TX

REF [160TA3519](#)



- Voltage: 24 VDC
- Length: 90 mm
- Width: 60 mm
- Height: 30 mm

Used on STAR10

REF [160TA3766](#)



- Voltage: 24 VDC
- Length: 80 mm
- Width: 60 mm
- Height: 30 mm

Used on STAR 8/225, STAR 10/266J, STAR 10

REF [165TA3967](#)

USED ON HAULOTTE



HYDRAULIC CYLINDERS



- Lift cylinder or single-acting
- Total measured length: 575 mm
- Diameter tube: 95 mm
- Diameter rod: 40 mm
- Piston shaft stroke: 313 mm

Used on HA16PX, HA16SPX, HA16X, HA12IP

REF 160TA3244



- Special cylinder
- Total measured length: 338 mm
- Diameter tube: 42 mm
- Diameter rod: 20 mm
- Piston shaft stroke: 85 mm

Used on COMPACT10N, COMPACT8, COMPACT12, COMPACT10RTE, COMPACT10, OPTIMUM6, COMPACT8W, OPTIMUM8, COMPACT12EN 280

REF 160TA3933



- Special cylinder
- Total measured length: 490 mm
- Diameter tube: 125 mm
- Diameter rod: 75 mm
- Piston shaft stroke: 215 mm

Used on HA20P, HA26PX, HA20PX, HA26P, H23T, H25TP, H21TX

REF 160TA1762



- Special cylinder
- Total measured length: 635 mm
- Diameter tube: 90 mm
- Diameter rod: 55 mm

Used on HA20P, HA26PX, HA20PX, HA260PX

REF 160TA2359



- Steering cylinder
- Total measured length: 667 mm
- Diameter tube: 73,3 mm
- Diameter rod: 45 mm

Used on HA12IP, HA15IP

REF 160TA3063



- Special type cylinder
- Total measured length: 810 mm
- Diameter tube: 90 mm
- Diameter rod: 55 mm
- Piston shaft stroke: 520 mm

Used on H12SX(L), HS5388RT(XL), H18SX, HS5388RT

REF 160TA4028

HYDRAULIC HOSES



- Length: 8950 mm
- Pressure: 3260 bar

Used on HA15X, HA16PX, HA18PX, HA16PXNT, HA18PXNT, HA16P, HA18P, HA16SPX, HA16X

REF 160TA1807



- Length: 8950 mm
- Pressure: 3260 bar

Used on HA16PX, HA16PXNT, HA16P, HA12IP, HA16SPX

REF 160TA2940

USED ON HAULOTTE



HYDRAULIC PARTS

HYDRAULIC MOTORS

Type of flange

<p>Type A</p>	<p>Type C</p>	<p>Type D Number of holes is not important for this type</p>	<p>Type S Special shape, none of the previous types</p>
			<p>Type Z Without flange</p>

Type of shaft

<p>Type B</p>	<p>Type E</p>	<p>Type F</p>	<p>Type S Special type</p>
----------------------	----------------------	----------------------	---------------------------------------

	Thread connection	Type of flange	Type of shaft	Total length mm	Used on	REF
	1/2" BSP	A	F	194	H21T, HA16DX, HA20P, HA26PX, HA20PX, HA26P, H16TPX, H23T, H25TP, HA260PX, HA16D 4X4, HA16D, H21TX	131TA6855
	1/2" BSP	A	F	195	HA15X, HA16PX, HA18PX, HA16PXNT, HA18PXNT, HA16P, HA18P, HA16X	131TA9754
	1/2" BSP	C	E	219	OPTIMUM6, OPTIMUM8	138TA7250
	1/2" BSP	C	E	243	COMPACT12	160TA5011

USED ON HAULOTTE



HYDRAULIC PARTS

HYDRAULIC MOTORS

Type of flange

<p>Type A</p>	<p>Type C</p>	<p>Type D Number of holes is not important for this type</p>	<p>Type S Special shape, none of the previous types</p> <p>Type Z Without flange</p>
----------------------	----------------------	---	--

Type of shaft

<p>Type B</p>	<p>Type E</p>	<p>Type F</p>	<p>Type S Special type</p>
----------------------	----------------------	----------------------	---------------------------------------

	Thread connection	Type of flange	Type of shaft	Total length mm	Used on	REF
	1/2" BSP	D	B	145	H12SX, H12SD, HA15D, HA15X, HA16P, HA16DX, HA20P, H16TPX, H18DX, H15SD, H18SX, H15SX, HA16D	131TA6848
	1/2" BSP	D	B	151	HA12PX, H21T, HA16PX, HA18PX, HA18PXNT, HA16PXNT, HA16P, HA18P, HA26PX, HA20PX, HA20P, H23T, H25TP, HA260PX, HA16X, H21TX, HA16SPX	138TA7251
	1/2" BSP	S	S	150	HA16RTJ, HA46RTJP, H12SX(L), HS5388RT(XL)	160TA4703
	3/4" BSP	C	E	383	COMPACT10DX, COMPACT12DX, COMPACT12DX, COMPACT3368RT, COMPACT10DX, COMPACT2668RT, COMPACT8DX	138TA7254

USED ON HAULOTTE



HYDRAULIC PARTS

HYDRAULIC MOTORS

Type of flange

<p>Type A</p>	<p>Type C</p>	<p>Type D Number of holes is not important for this type</p>	<p>Type S Special shape, none of the previous types</p>
			<p>Type Z Without flange</p>

Type of shaft

<p>Type B</p>	<p>Type E</p>	<p>Type F</p>	<p>Type S Special type</p>
----------------------	----------------------	----------------------	---------------------------------------

	Thread connection	Type of flange	Type of shaft	Total length mm	Used on	REF
	3/4" NPT + 3/8" BSP	C	E	383	COMPACT10DX	160TA3341
	3/8" BSP	Z	F	150	STAR9, STAR12, STAR11	138TA7248
	7/8" UNF	C	E	229	COMPACT12EN 280, COMPACT8W, COMPACT2247E, COMPACT10RTE, COMPACT2668L, COMPACT10N, COMPACT2632E, COMPACT8, COMPACT2032E, COMPACT12, COMPACT8, COMPACT12, COMPACT2277E, COMPACT3347E, COMPACT12, COMPACT10	131TA6833

HYDRAULIC MOTORS



- Kit of 2 pieces
- Thread connection: 1/2" BSP
- Type of flange: C
- Type of shaft: E
- Total length: 243 mm

Used on COMPACT8

REF 160TA4000

USED ON HAULOTTE



HYDRAULIC PUMPS						
	Total length mm	Neck diameter mm	Direction of rotation	Material of housing	Used on	REF
	84	32	CCW	Aluminium	HA16PX, HA16SPX, HA16X, HA41PX-NT	106TA5591
	85,5	32	CW	Aluminium	LPE/STAR6P	160TA2215
	87,4	52	CCW	Aluminium	HA15IP, HA43JE, COMPACT10-12/2668-336, HA12IP, HA33JE, HA15IP	138TA7263
	92,7	32	CCW	Aluminium	STAR 8	160TA3362
	98	85	CW	Aluminium	COMPACT8, COMPACT10, COMPACT12	160TA3451
	99,5	45,2	CCW	Aluminium	OPTIMUM8	160TA3201
	100	45,2	CCW	Aluminium		165TA3968

HYDRAULIC PARTS

USED ON HAULOTTE



HYDRAULIC PARTS

HYDRAULIC PUMPS						
	Total length mm	Neck diameter mm	Direction of rotation	Material of housing	Used on	REF
	102	32	CCW	Aluminium	STAR8, STAR10	138TA7264
	107,4	31,7	CW	Aluminium	HA12CJ(+)/32CJ(+)/33CJ	165TA3969
	110	31,7	CW	Aluminium	HA12CJ(+)/32CJ(+)/33CJ(+)	160TA2751
	121	45,2	CCW	Aluminium		147TA6760
	191	82,5	CCW	Aluminium	COMPACT12DX, COMPACT8DX, COMPACT10DX	160TA2984
	215	101,5	CW	Aluminium		160TA3506
	233	101,5	CW	Aluminium + metal	H12SX	138TA7265

USED ON HAULOTTE



HYDRAULIC PARTS

HYDRAULIC PUMPS						
	Total length mm	Neck diameter mm	Direction of rotation	Material of housing	Used on	REF
	260	101,6	CW	Metal	H21T, HA15X, HA16PX, HA18PX, HA16PXNT, HA18PXNT, HA16P, HA20P, HA18P, HA26P, HA20PX, H16TPX, HA26PX, H23T, H25TP, HA32PX, H43TPX, HA41PX-NT	138TA7252
	260	101,5	CW	Aluminium	HA16DX, HA16D	165TA3970
	250	101,6	CW	Metal	HA188PX, HA51SJRT, HA16/18SPX, HA46/51S, HA14TX-16TPX, HA40-4, HA20/260PX, HA61/80J, H21TX/23/25TPX/HB6268	160TA3801

HYDRAULIC HAND PUMP KIT



Used on HA16SPX, STAR10, H12SX, HA12PX, HA15I, HA15D, HA16P, HA18P, HA12I, STAR8, HA12IP, HA15IP, H15SX, H18SX, HTB180

REF [138TA7269](#)

USED ON HAULOTTE



HYDRAULIC PARTS

HYDRAULIC PUMP GROUPS				
	Electric motor V	Power kW	Used on	REF
	12 DC	1,6	HA26PX, HA16PXNT, HA18PXNT, HA20PX, HA32PX, HA16PX, HA16SPX, HA16X, HA41PX-NT	138TA7258
	12 DC	2,1	HT/28/85(RTJ0)/(PRO), HB86TJ+/H25TJ+, HA26RTJ O/HA80RTJ PRO, HA20RTJ/ HA61 RTJ PRO, HT43/132 RTJ PRO	160TA3897
	24	3	COMPACT12, COMPACT8W, COMPACT8, COMPACT10, OPTIMUM8, OPTIMUM6	139TA5117
	24	3	H960E	138TA7256
	24	3	STAR12, STAR9, STAR11, STAR10	160TA3678
	24 DC	3	STAR 8	160TA1516

USED ON HAULOTTE



HYDRAULIC PUMP GROUPS				
	Electric motor V	Power kW	Used on	REF
	24 DC	3	OPTIMUM6, COMPACT8W, COMPACT8, COMPACT10N, COMPACT12, COMPACT10RTE, COMPACT10, OPTIMUM8, COMPACT12EN 280	138TA7260
	24 DC	3	HM8/HM10P, STAR 8, STAR 10, HM8	138TA7262
	24 DC	4,5	OPTIMUM6, OPTIMUM8	138TA7255
	48 DC	3,7	HA12IP, HA33JE, HA15I, HA43E, HA16P(X/D/N), HA46JRT	138TA7259
	48 DC	3,7	HA15IP, HA43JE, HA33JE	160TA2800
	24 DC	4,5	STAR10	160TA3829

HYDRAULIC PARTS

USED ON HAULOTTE



HYDRAULIC PARTS

HYDRAULIC OIL TANK



- Length: 765 mm
- Width: 255 mm
- Height: 250 mm

Used on COMPACT8,
COMPACT18W,
COMPACT10N, COMPACT12,
COMPACT10RTE, COMPACT10,
COMPACT12EN 280

REF [160TA3332](#)

HYDRAULIC SERVO BRAKE



- Height: 184 mm
- Diameter: 153 mm
- Thread: M26 x 1,25 mm

Used on OPTIMUM6,
OPTIMUM8

REF [160TA4062](#)

HYDRAULIC BRAKE



- Diameter housing: 184 mm
- Length housing: 93 mm
- Total length: 158 mm
- Thread: 1 1/8"

Used on COMPACT8,
COMPACT12, COMPACT10,
COMPACT10N, COMPACT8W,
COMPACT10RTE,
COMPACT12EN 280

REF [138TA7310](#)