



USED ON
UPRIGHT

USED ON UPRIGHT



JOYSTICKS & CONTROL BOXES

ELECTRONIC JOYSTICKS



Single-axis
Used on MX15, MX19, SL20,
SL26N, SL30N
REF [164TA7279](#)



Single-axis
Used on AB46
REF [145TA3104](#)



Single-axis
Used on AB46, AB46 I/C,
AB46 RT
REF [145TA3108](#)



Single-axis
Used on AB62
REF [164TA7285](#)



Single-axis
Used on LX31, LX41
REF [145TA3112](#)



Single-axis
Used on LX31, LX41, LX50,
XRT27, XRT33
REF [145TA3089](#)



Single-axis
Used on MB20, MB26, SP37,
AB38
REF [145TA2871](#)



Single-axis
Used on MX15, MX19, SL20,
SL26(N), SL30(N)
REF [145TA2886](#)



Single-axis
Used on MX15, MX19, TM12,
SL14, SL20D
REF [145TA3091](#)



Single-axis
Used on MX15, MX19, X20(N,W),
X26N
REF [145TA2875](#)

USED ON UPRIGHT



ELECTRONIC JOYSTICKS

JOYSTICKS & CONTROL BOXES



Single-axis
Used on SL26
REF [165TA4517](#)



Single-axis
Used on S3370(BE,RT),
S2770(BE,RT), SR-series,
SLH-series
REF [145TA3092](#)



Single-axis
Used on SB60, SB80
REF [164TA7282](#)



Single-axis
Used on SB60, SB80
REF [164TA7288](#)



Dual-axis
Used on SB60, SB80
REF [142TA8013](#)



Single-axis
Used on SL15, SL19, SL20,
SL25, S2033, S2545
REF [145TA3094](#)



Single-axis
Used on SL20
REF [164TA7286](#)



Single-axis
Used on SL20, TM12
REF [145TA2874](#)



Single-axis
Used on SL20, X20(N,W),
X26(N,UN), X32N
REF [145TA2870](#)



Single-axis
Used on SL26(N,RT,SL),
SL30(N,RT,SL)
REF [145TA2880](#)

USED ON UPRIGHT



JOYSTICKS & CONTROL BOXES

ELECTRONIC JOYSTICKS



Single-axis
Used on TL38, TL49
REF [164TA7287](#)



Single-axis
Used on X20(N,W), X26N, X31N, X32N
REF [145TA3331](#)



Single-axis
Used on X26(N), X32(N)
REF [164TA7278](#)



Single-axis
Used on X26N, SL26SL, SL30SL, MX19, MB20N, MB26, AB38, A38E
REF [161TA2140](#)



Cable length: 230 mm
Used on TL38, TL50
REF [164TA7519](#)



Cable length: 115 mm
Used on AB38, A38E, MB20N, MB26
REF [127TA2750](#)

USED ON UPRIGHT



JOYSTICKS & CONTROL BOXES

CONTROL BOXES



- Length: 270 mm
- Width: 370 mm
- Height: 420 mm

Used on X20W, X26N, X31N, X series

REF [165TA4518](#)



- Length: 184 mm
- Width: 235 mm
- Height: 124 mm

Used on AB38, A38E

REF [164TA7284](#)

ELECTRICITY CLOSETS AND BOXES



- Length: 20 mm
- Width: 160 mm
- Height: 105 mm

Used on X series

REF [164TA7384](#)

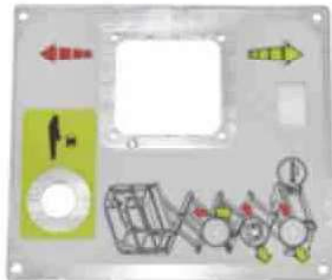


- Length: 235 mm
- Width: 185 mm
- Height: 130 mm

Used on AB38, A38E

REF [164TA7387](#)

BUILT-IN FRAME SWITCH



- Mounting plate for upper control box
- Length: 212 mm
- Width: 180 mm

Used on MX19

REF [164TA7386](#)

USED ON UPRIGHT



CONTROLLERS & PRINTED CIRCUIT BOARDS

ELECTRONIC CONTROL UNIT (ECU)



- Length: 127 mm
- Width: 132 mm
- Height: 50,3 mm

Used on MX19, X26N, TM12

REF [164TA7480](#)

MOTOR CONTROLLERS



- Upright motor controller
- Length: 170 mm
- Width: 170 mm

Used on SL20

REF [164TA7466](#)



- Upright motor controller
- Length: 173 mm
- Width: 114 mm

Used on SL20, X series, X20N, X20W, X26N, X26UN, X32N

REF [164TA7482](#)



- Curtis controller
- Length: 195 mm
- Width: 145 mm

Used on AB38, A38E

REF [164TA7465](#)



- Motor controller MOS90
- Length: 235 mm
- Width: 140 mm

Used on TL38

REF [164TA7447](#)



- Motor controller MOS90
- Length: 238 mm
- Width: 140 mm

Used on TL49

REF [164TA7459](#)



- Motor controller MOS90
- Length: 240 mm
- Width: 140 mm

Used on TL38, TL33

REF [164TA7469](#)

USED ON UPRIGHT



MOTOR CONTROLLERS



- Motor controller MOS90
- Length: 255 mm
- Width: 138 mm

Used on MB20/26

REF [164TA7486](#)



- Pump control unit
- Motor controller MOS90
- Length: 263 mm
- Width: 140 mm

Used on AB38

REF [164TA7460](#)



- Traction control unit
- Motor controller MOS90
- Length: 263 mm
- Width: 140 mm

Used on AB38

REF [164TA7473](#)



- Motor controller MOS90
- Length: 339 mm
- Width: 140 mm

Used on AB46, AB46 Electric & Bi-energy

REF [164TA7472](#)



- ECU box (with printed circuit board)
- Length: 205 mm
- Width: 132 mm

Used on AB38, A38E

REF [164TA7479](#)

CONTROLLERS & PRINTED CIRCUIT BOARDS

USED ON UPRIGHT



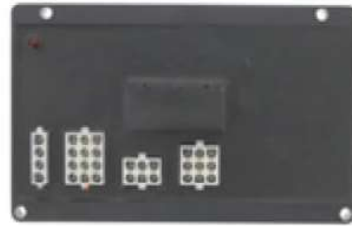
CONTROLLERS & PRINTED CIRCUIT BOARDS

PRINTED CIRCUIT BOARDS



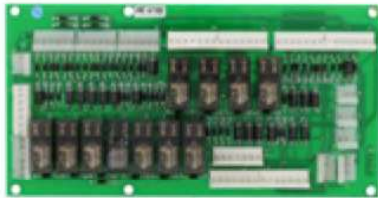
- Auto stabiliser module
- Length: 185 mm
- Width: 115 mm

Used on SR2255, SR2755, SR3370, SR2770



- Overload circuit
- Length: 185 mm
- Width: 115

Used on MX19



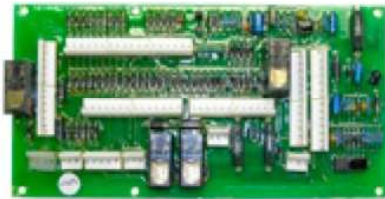
- Lower circuit board
- Length: 214 mm
- Width: 107 mm

Used on MB20/26



- Lower printed circuit board
- Length: 213 mm
- Width: 107 mm

Used on TL38 work platforms



- Lower printed circuit board AB38
- Length: 129 mm
- Width: 58 mm

Used on AB38



- Length: 129 mm
- Width: 58 mm

Used on A38E



- Lower control box
- Length: 132 mm
- Width: 110 mm

Used on TL33



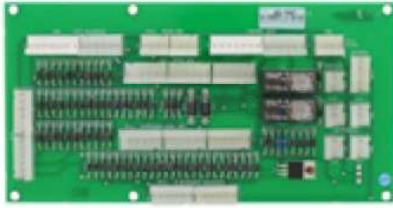
- Printed circuit board assembly (platform controller)
- Length: 131,4 mm
- Width: 133,5 mm

Used on AB38, MX19, A38E

USED ON UPRIGHT



PRINTED CIRCUIT BOARDS



- Printed circuit board assembly lower
- Length: 214 mm
- Height: 107 mm

Used on TL49



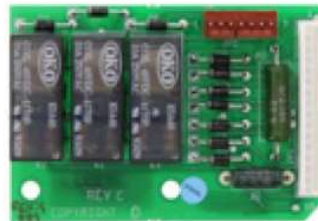
Printed circuit board lower control box LX41 with outrigger

Used on LX31, LX41, LX50



- Printed circuit board MX19 whisper
- Length: 150 mm
- Width: 150 mm

Used on SL20, X series, X20N, X20W, X26N, X26UN, X32N



- Printed circuit board upper SP37
- Length: 76 mm
- Width: 52 mm

Used on AB38



- Resistor module dual
- Length: 90 mm
- Width: 54 mm

Used on AB46RT



- SP37 lower printed circuit board S/S 57592-00 serial n° 1076 – current
- Length: 212 mm
- Width: 106 mm

Used on SP37



- TL33 upper control board
- Length: 76,5 mm
- Width: 51 mm

Used on TL33, TL49, SP37

Although these electronic cards may resemble the one fitted on your mobile elevating work platform there can be a big difference. Therefore we always ask you to supply us with part number or full vehicle details before ordering a similar unit.

This is just a small selection of our electronic boards. For all other types, please feel free to call us!

CONTROLLERS & PRINTED CIRCUIT BOARDS

USED ON UPRIGHT



ELECTRICAL PARTS

DASHBOARD WARNING LIGHTS



- Built-in diameter: 12 mm
- Outer diameter: 16,2 mm
- Lens colour: green

Used on U-DRIVE25, LX31, LX41, LX50, XRT27/XRT33, LX50

REF 164TA7107



- Built-in diameter: 14 mm
- Outer diameter: 16 mm
- Lens colour: green

Used on AB38, TL38, TL33, TL49, SP37, TL34

REF 164TA7109 - Green

REF 164TA7108 - Red

BUZZERS/BACK-UP ALARMS



- Voltage: 12-48 V
- Volume: 107 dB
- Dimensions: 62 x 73,5 mm

Used on LX31, LX41, LX50, AB62, SL20, X series, SB80, XRT27/XRT33, SL26, 30RT, SL20 (12V), 30SL, X20N, X20W, X26N, X26UN, X32N, AB46, AB46 I/C 2WD, 30N

REF 164TA7089



- Voltage: 12-48 V
- Volume: 107 dB
- Dimensions: 62 x 73,7 mm

Used on LX31, LX41, LX50, MX15, MX19, SL26, 30RT, 30SL, X20N, X20W, X26N, X26UN, X32N, 30N, X series

REF 164TA7088

SEA-approved



- Voltage: 12 V
- Volume: 102 dB
- Dimensions: 101,5 x 41,3 x 69 mm

Used on LX31, LX41, MX15/MX19, SL26RT/SL30RT, SL26N/SL30N, TM12, SL20 1, SL26, 30SL, 30N, LX31DD/LX41DD

REF 139TA5211

UL/SEA-approved



- Voltage: 5-28 V
- Volume: 98 dB
- Dimensions: 46 x 50 mm

Used on AB38, MB20/26, TL38, AB38, SP37, TL33, TL49

REF 164TA7087



- Voltage: 6-30 V
- Volume: 90 dB
- Dimensions: 46 x 36,3 mm
- Built-in diameter: 29 mm

Used on AB38, MX19, AB38, A38E

REF 128TA3427

USED ON UPRIGHT



ELECTRICAL PARTS

HORNS



- Volume: 105 dB
- Voltage: 12 V
- Type of mounting: straight bracket
- Diameter: 90 mm

REF [111TA3928](#)

E-approved



- Volume: 112 dB
- Voltage: 24 V
- Type of mounting: straight bracket
- Diameter: 90 mm

REF [126TA6165](#)

E-approved

CABLE LOOMS



- Cable type: < 6 mm²
- Type of loom: multiple cables
- Total length: 2550 mm
- Number of plugs: 6

Used on TM12, M1230E

REF [164TA7335](#)



- Cable type: < 6 mm²
- Type of loom: multiple cables
- Total length: 3020 mm
- Number of plugs: 2

REF [164TA7344](#)



- Cable type: < 6 mm²
- Type of loom: multiple cables
- Total length: 403 mm
- Number of plugs: 2

Used on MX19

REF [164TA7326](#)



- Cable type: < 6 mm²
- Single cable loom: 1 cable
- Total length: 365 mm
- Number of plugs: 2

Used on AB38, MX19, A38E

REF [164TA7336](#)



- Cable type: < 6 mm²
- Single cable loom: 1 cable
- Total length: 2620 mm
- Number of plugs: 2

Used on AB38, MX19, A38E

REF [164TA7343](#)



- Cable type: < 6 mm²
- Type of loom: multiple cables
- Total length: 11 650 mm
- Number of plugs: 5

Used on MX19, MX15, SL20.1

REF [164TA7342](#)

USED ON UPRIGHT



ELECTRICAL PARTS

CABLE LOOMS



- Cable type: < 6 mm²
- Type of loom: multiple cables
- Total length: 12 000 mm
- Number of plugs: 4

Used on MX19

REF 164TA7334



- Cable type: < 6 mm²
- Type of loom: multiple cables
- Total length: 16 545 mm
- Number of plugs: 3

Used on AB38, AB38 work platforms

REF 164TA7346



- Cable type: < 6 mm²
- Type of loom: multiple cables
- Total length: 16 800 mm
- Number of plugs: 4

Used on AB38, AB38 work platforms, 38E

REF 164TA7341



- Cable type: < 6 mm²
- Type of loom: multiple cables
- Total length: 17 230 mm
- Number of plugs: 4

Used on X series, X20N, X20W, X26N, X26UN, X32N

REF 164TA7333



- Cable type: < 6 mm²
- Type of loom: multiple cables
- Total length: 18 450 mm
- Number of plugs: 5

Used on XS, X series work platform

REF 164TA7338



- Cable type: < 6 mm²
- Type of loom: multiple cables
- Total length: 15 250 mm
- Number of plugs: 1

Used on SP37

REF 164TA7331

USED ON UPRIGHT



COMPLETE CONTACTORS						
	Voltage V	Maximum current A	Magnetic blowouts	Dust cover	Used on	REF
	48	150	No	No	SP37	165TA4519
	12	80	No	No	AB62, AB46RT European SP, AB46RT, AB46, LX31, LX41, LX50, SL26, 30SL, AB46 Electric & Bi-energy, AB46RT 4WD, AB46 I/C 2WD, SL26RT/SL30RT, SL26N/SL30N, LX31DD/LX41DD	123TA5763
	24	100	No	No	AN38, AB38, A38E	152TA2169
	24	100	No	No	LX31, LX41, LX50, AB38, AB38, A38E, AB46I/C 2WD, AB46	164TA7103
	24	100	Yes	No	MB20/26, TL38, TL33, TL49	106TA1585
	24	200	No	No	SL20, X series, MX15, MX19, SL20 (12V), XS, TM12, X20N, X20W, X26N, X26UN, X32N, X series	122TA7511
	24	200	Not specified	Enclosed version	MX15, MX19, SL20D, SL30N, TM12, SL20 1, SL26, 30N, X20N, X20W, X26N, SL14,	111TA4054

ELECTRICAL PARTS

USED ON UPRIGHT



ELECTRICAL PARTS

COMPLETE CONTACTORS						
	Voltage V	Maximum current A	Magnetic blowouts	Dust cover	Used on	REF
	24	200	Yes	No	SL20	106TA1670
	48	200	No	No	AB38, A38E	164TA7104
	48	100	Yes	No	AB38	107TA1353
	48	200	No	No	AB46, AB46 Electric & Bi-energy	123TA9532
	48	250	No	Yes	LX31, LX41, AB46, AB46 Electric & Bi-energy	164TA7101
	48	80	No	No	AB38	164TA7105

USED ON UPRIGHT



ENCODERS



- Diameter shaft: 4,7 mm
- Length shaft: 12,8 mm
- Housing diameter: 28,6 mm
- Voltage: 10,44 V
- Number of pins: 2

REF [123TA5543](#)



- Diameter shaft: 4,8 mm
- Length shaft: 14,5 mm
- Housing diameter: 30 mm
- Voltage: 20,8 V
- Number of pins: 2

REF [124TA9515](#)

HOUSING CONNECTORS



- Biggest diameter: 25 mm
- Smallest diameter: 20 mm
- Height: 82 mm
- Number of connecting holes: 8 female

Used on MX19

REF [164TA7345](#)



- Biggest diameter: 43,4 mm
- Smallest diameter: 30,4 mm
- Height: 27,2 mm
- Number of connecting holes: 37 female

Used on AB38

REF [160TA2985](#)

USED ON UPRIGHT



ELECTRICAL PARTS

RELAYS					
	Voltage V	Type of voltage	Current A	Used on	REF
General purpose and power relay					
	6	DC	10	SL26, 30RT, 30SL, SL26RT/SL30RT, 30N	111TA4922
	12	DC	10	LX50, AB46 European SP, AB46RT, LX31, LX41, LX50, AB46RT 4WD, AB46 I/C 2WD, LX31DD/LX41DD	124TA4686
	12	DC	10	LX50, AB46RT, SB80, LX31, LX41, AB46RT 4WD, AB46RT, LX31DD/LX41DD	128TA3014
	12	DC	10	LX50, LX31, LX41, SL20, XRT27/XRT33, SL26, 30RT, SL20 (12V), SL26RT/SL30RT, SL26N/SL30N, 30SL, 30N	164TA7499
	12	DC	10	SL20, SL26, 30RT, 30SL, SL26RT/SL30RT, SL26N/SL30N, 30N	164TA7502
	12	DC	10	SL26, 30RT, 30SL, SL26RT/SL30RT, SL26N/SL30N	121TA1131
	12	DC	10	LW31, LX41, LX50, AB46RT European SP, AB46RT, SB80, LX31DD/LX41DD, LX31/41, LS31/LX41	122TA7891

USED ON UPRIGHT



ELECTRICAL PARTS

RELAYS					
	Voltage V	Type of voltage	Current A	Used on	REF
	12	DC	10	AB85RJ, AB40JRT	111TA4904
	24	DC	10	U-DRIVE25, SL20, TM12, X20N, X20W, X26N, X26UN, X32N, MX15, MX19, SL20D, X series, SL14	139TA5073
	24	DC	16	SL20D, SL26N/SL30N, SL26, 30N	164TA7500
	24	DC	3-30	U-DRIVE25, TM12, MX15, MX19, TM12	122TA7919
	48	DC	10	LX31/LX41, AB46RT, AB46RT 4XD, AB46, AB46I/C 2WD, AB46 Electric & Bi-Energy	124TA8980
	48	DC	16	LX31, LX41	124TA8989

USED ON UPRIGHT



ELECTRICAL PARTS

TIMER RELAY



- For 12 VDC and 24 VDC machines
- Input range: 10-32 V
- Operating temperature: -20 up to 85 °C

Used on LX31/41, LX31DD/41DD

REF [164TA7497](#)

ELECTRIC MOTORS



- Minimum voltage: 24 V
- Current: 150 A
- Revolutions/minute: 3600 rpm
- Power: 2,94 kW
- Direction of rotation: CW

Used on XS, SL20

REF [122TA7771](#)



- Minimum voltage: 48 V
- Current: 85 A
- Revolutions/minute: 1000 rpm
- Power: 4 kW
- Direction of rotation: CW-CCW

Used on AB38, A38E, SP37

REF [164TA7129](#)



- Minimum voltage: 48 V
- Current: 108 A
- Revolutions/minute: 2700 rpm
- Power: 5,45 kW
- Direction of rotation: CCW

Used on AB46, AB46 Electric & Bi-Energy

REF [164TA7128](#)



- Minimum voltage: 48 V
- Current: 85 A
- Revolutions/minute: 1000 rpm
- Power: 4 kW
- Direction of rotation: CW-CCW

Used on AB38, A38E

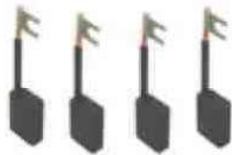
REF [164TA7130](#)

USED ON UPRIGHT



ELECTRICAL PARTS

BRUSH KITS



- Thickness: 9,4 mm
- Width: 20,6 mm
- Height: 28,4 mm
- Set of 4 brushes

Used on AV46, AB46 Electric & Bi-energy

REF [164TA7351](#)



- Thickness: 12,6 mm
- Width: 21,7 mm
- Height: 36,6 mm
- Set of 4 brushes

Used on AB38, A38E, SP37

REF [164TA7352](#)



- Thickness: 7 mm
- Width: 22 mm
- Height: 19,3 mm
- Set of 2 brushes

Used on X series

REF [121TA2338](#)



- Thickness: 7 mm
- Width: 22,2 mm
- Height: 19 mm
- Set of 4 brushes

Used on MX15, MX19, TL38, SL20D, SL26N/SL30N, TM12

REF [164TA7353](#)

CARBON BRUSHES



- Thickness: 15,9 mm
- Width: 31,6 mm
- Height: 33,1 mm

Used on AB46, AB46 Electric-Bi-energy

REF [140TA4563](#)



- Thickness: 8 mm
- Width: 28 mm
- Height: 30 mm

Used on AB38, A38E, SP37

REF [140TA4808](#)

SERVO MOTORS



- Voltage: 12 V
- Cable length: 1765 mm
- Dimensions: 140 x 63,5 mm

Used on AB62

REF [164TA6943](#)



- Voltage: 12 V
- Cable length: 1000 mm
- Dimensions: 290 x 51 mm

Used on AB62

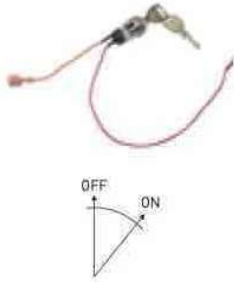
REF [164TA6944](#)

USED ON UPRIGHT



SWITCHES

IGNITION SWITCHES



- Number of connections: 3
- Number of positions: 2
- Built-in diameter: 17 mm
- Total length: 40 mm
- Key: yes

Used on AB38, A38E

REF 164TA7402



- Number of connections: 3
- Number of positions: 2
- Built-in diameter: 19 mm
- Total length: 41 mm
- Key: yes

Used on AB38, MX19, A38E

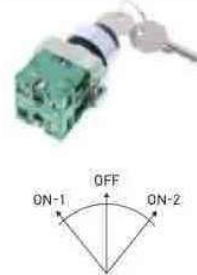
REF 164TA7400



- Number of connections: 3
- Number of positions: 3
- Built-in diameter: 19 mm
- Total length: 62 mm
- Key: yes

Used on MX15, MX19, XS, SL20D, TM12, SL20 1, SL14

REF 141TA2635



- Number of connections: 4
- Number of positions: 3
- Built-in diameter: 22 mm
- Total length: 62 mm
- Key: yes

Used on MS20/26, TL38, SP37, TL34

REF 164TA7396



- Number of connections: 4
- Number of positions: 3
- Built-in diameter: 22 mm
- Total length: 62 mm
- Key: yes

Used on AB38

REF 164TA7399



- Number of connections: 4
- Number of positions: 3
- Built-in diameter: 22 mm
- Total length: 62 mm
- Key: yes

REF 164TA7393



- Number of connections: 4
- Number of positions: 4
- Built-in diameter: 19 mm
- Total length: 70 mm
- Key: no

Used on AB62, SB80, AB50JRT, AB85RJ, AB60JRT, AB46RT

REF 126TA5997



- Number of connections: 4
- Number of positions: 4
- Built-in diameter: 19 mm
- Total length: 71 mm
- Key: yes

Used on SL26, 30RT, 30SL, LX50, LX31, LX41, LX-50, SRT27/XRT33, 30N, LX31DD/LX41DD

REF 164TA7398



- Number of connections: 5
- Number of positions: 4
- Built-in diameter: 28 mm
- Total length: 69 mm
- Key: yes

Used on LX30, LX41, LX31DD/LX41DD, SL26RT/SL30RT, SL26N/30SL, SL26, 30SL, 30N

REF 140TA1484

USED ON UPRIGHT



SWITCHES

OPERATING HEADS						
	Number of positions	Built-in diameter mm	Key	Material	Used on	REF
	3	22	Yes	Metal	X series, SL20, X20N, X20W, X26N, X26UN, X32N, SL 20 (12V)	164TA7401
	3	22	Yes	Plastic	LX31/LX41, AB46RT European SP, AB46RT Dual fuel, AB46RT, AB46RT 4WD, AB46, AB46 I/C 2WD, AB46 Electric & Bi-energy	164TA7397
	4	21	Yes	Plastic	LX31/LX41, AB46RT European SP, AB46RT Dual fuel, AB46RT, AB46RT 4WD, AB46, AB46 I/C 2WD, AB46 Electric & Bi-energy	164TA7395

ROTARY SWITCHES	
 <ul style="list-style-type: none"> Number of positions: 2 Built-in diameter: 22 mm <p>Used on LX31, LX41, LX50, SL20, X series, MX15, MX19, XTR27/XTR33, SL20 (12V), XS, X20N, X20W, W26N, X26UN, X32N, X series</p> <p>REF 164TA7623</p>	 <ul style="list-style-type: none"> Number of positions: 3 Built-in diameter: 22 mm <p>Used on LX31, LX41, LX50, X series, XTR27/XTR33, SL20 (12V), SL20, XS, X20N, X20W, X26N, X26UN, X32N</p> <p>REF 164TA7624</p>

COMPLETE ROTARY SWITCHES	
 <ul style="list-style-type: none"> Number of positions: 2 Voltage: 240 V Current: 3 A Built-in diameter: 22 mm <p>Used on AB38, SL20, MB20/26, AB38, SP37</p> <p>REF 160TA2157</p>	 <ul style="list-style-type: none"> Number of positions: 2 Voltage: 48 VDC Built-in dimensions: 42 x 41 mm <p>Used on AB46, AB46 Electric & Bi-energy</p> <p>REF 146TA8793</p>

USED ON UPRIGHT



SWITCHES

KEYS FOR IGNITIONS/DOOR LOCKS



- Key number: 3095
- Number of supplied keys: 1

Used on LX31/LX41, AB62, AB46RT European SP, AB46RT Dual fuel, AB46RT, X series, AB62, AB46RT 4WD, AB46, AB46 I/C 2WD, AB46 Electric & Bi-energy

REF [129TA4234](#)



- Key number: 455
- Number of supplied keys: 1

Used on AB38, MB20/26, TL38 work platforms, AB38 work platforms

REF [110TA3210](#)



- Key number: CH512
- Number of supplied keys: 1

Used on AB38, MB20/26, TL38

REF [129TA3821](#)



- Key number: PK556
- Number of supplied keys: 1

Used on LX31, LX41, LX50, LX31/41/50, UL II series, SL26N/SL30N, SL14

REF [141TA3435](#)



- Key number: 001
- Number of supplied keys: 1

Used on SL20, MX19

REF [164TA7595](#)

USED ON UPRIGHT



SWITCHES

CAM SWITCH



- Rotary switch
- Number of positions: 4

Used on AB38, TL38, TL33, TL49, SP37

REF [146TA8782](#)

FOOT SWITCHES



- Number of NC contacts: 2
- Number of NO contacts: 2

Used on AB50JRT, AB85RJ, AB60JRT, AB46E, AN46RT

REF [165TA4445](#)



- Number of NC contacts: none
- Number of NO contacts: none

Used on AB62, AB46RT European SP, AB46RT Dual fuel, SB80, SL20 (12V), SL20, TM12 work platform, AB46RT 4WD, AB46, AB46 I/C 2WD, SL20D, TM12, AB46 Electric & Bi-energy, SL26, SL14

REF [127TA2765](#)

LIMIT SWITCHES



- Number of NO contacts: 1
- Number of NC contacts: 1
- Current: 3 A

Used on AB62, AB46RT European SP, AB46RT Dual fuel, AB46RT, AB46E, AB46RT, AB46RT 4WD, A46JE, A46JRT

REF [161TA8097](#)



- Number of NO contacts: 1
- Number of NC contacts: 1
- Current: 3 A

Used on TL33

REF [146TA8778](#)



- Number of NO contacts: 1
- Number of NC contacts: 1
- Current: 3 A

Used on TL49, SP37

REF [146TA8750](#)



- Number of NO contacts: 2
- Number of NC contacts: 0
- Current: 3 A

Used on AB38, SP37

REF [146TA8752](#)

USED ON UPRIGHT



SWITCHES

MICROSWITCHES



- Number of connections: 2
- Number of NC contacts: 2
- Number of connection holes: 2
- Current: 5 A

Used on X series, SL20

REF [146TA1555](#)



- Number of connections: 3
- Number of CO contacts: 1
- Number of connection holes: 2
- Current: 15 A

Used on AB38, TL38, TL33, TL49, SP37

REF [145TA9666](#)



- Number of connections: 3
- Number of CO contacts: 1
- Number of connection holes: 2
- Current: 15 A

Used on LX31, LX41, LX50, SL26, 30RT, 30SL, SL26RT/SL30RT, SL26N/SL30N, SL26, 30N, 30SL, LX31DD/LX41DD, X series

REF [146TA4199](#)



- Number of connections: 3
- Number of CO contacts: 1
- Number of connection holes: 2
- Current: 15 A

Used on LX31, LX41, LX50, SL26, 30RT, 30SL, AB62, SB80, MX15/MX19, X series, SL20D, SL26RT/SL30RT, SL26N/SL30N, SL20 1, SL26, 30SL, 30N, LX31DD/LX41DD

REF [127TA2546](#)



- Number of connections: 3
- Number of CO contacts: 1
- Number of connection holes: 2
- Current: 16 A

Used on S3370, S2770

REF [145TA9464](#)

USED ON UPRIGHT



SWITCHES

MUSHROOMHEAD PUSH BUTTONS



- Built-in diameter: 22 mm
- Diameter knob: 40 mm

Used on LX50, LX31, LX41, AB62, AB46RT European SP, AB46RT Dual fuel, AB46RT, SB80, XRT27/XRT33, SL26, 30RT, 30SL, LX50, AB46RT 4WD, AB46, AB46 I/C 2WD, SL26RT/SL30RT, SL26N/SL30N, SL26, 30SL, 30N, LX31DD/LX41DD, AB46 Electric & Bi-energy

REF [164TA7614](#)



- Built-in diameter: 22 mm
- Diameter knob: 40 mm

Used on U-DRIVE25, UL II series

REF [128TA3060](#)



- Built-in diameter: 22 mm
- Diameter knob: 40 mm

Used on LX31, LX41, LX50, SL20, X series, MX15/MX19, XTR27/XTR33, SL20 (12V), XS, TM12, X20N, X20W, X26N, X26UN, X32N

REF [126TA4758](#)

COMPLETE MUSHROOMHEAD PUSH BUTTONS



- Built-in diameter: 22 mm
- Current: 3 A
- Voltage: 240 V

Used on AB38, SL20, MB20/26, TL38, AB38, TL33, TL19, SP37

REF [146TA8748](#)



- Built-in diameter: 22 mm
- Current: 3 A
- Voltage: 240 V

Used on MX15, MX19, X20N, X20W, X26N, SL20D, TM12, SL20 1

REF [147TA1659](#)



- Diameter: 40 mm
- Current: 100 A
- Voltage: 24 V

Used on AB38, MW19, AB38, MX19, A38E

REF [164TA7625](#)



- Diameter: 40 mm
- Current: 3 A
- Voltage: 240 V

Used on AB496E

REF [164TA7628](#)

USED ON UPRIGHT



SWITCHES

PUSH BUTTONS



- Diameter: 30 mm
- Length: 28 mm
- Button colour: green

Used on LX31/LX41, AB62, LX50, LX31/41, AB46RT European SP, AB46RT Dual fuel, AB46RT, SL20, LX31/LX41/LX50, AB46RT 4WD, AB46 I/C 2WD, AB46, LX31DD/LX41DD, AB46 Electric & Bi-energy

REF [164TA7615](#)



- Diameter: 30 mm
- Length: 41 mm
- Button colour: black

Used on LX31, LX41, AB62, LX50, AB46RT European SP, AB46RT Dual fuel, AB46RT, SB80, AB46RT 4WD, AB46, AB46 I/C 2WD, AB46RT, LX31DD/LX41DD, AB46 Electric & Bi-energy

REF [164TA7626](#)

COMPLETE PUSH BUTTONS



- Built-in diameter: 12 mm
- Length: 26,5 mm
- Button colour: black

Used on MX19

REF [164TA7520](#)



- Built-in diameter: 16 mm
- Length: 34 mm
- Button colour: red

Used on LX31, LX41, LX50, SL26, 30RT, 30SL, AB62, SB80, MX15, MX19, LX31/41, SL26RT/SL30RT, SL26N/SL30N, SL20 1, SL26, 30SL, 30N, LX31DD/LX41DD, X series

REF [126TA5215](#)

TOGGLE SWITCHES

	Number of connections	Maximum voltage V	Current A	Used on	REF
	6	277	10	LX31, LX41, LX50, SL26, 30RT, 30SL, AB62, SB80, MX15/MX19, SL26RT/SL30RT, SL26N/SL30N, LX31DD/LX41DD, X series	127TA2721
	3	250	12	LX31, LX41, LX50, AB62, SL20, AB46RT, SB80, SL20 (20V), SL26, 30SL, LX31DD/LX41DD, AB85RJ, AB60JRT	106TA1443
	3	250	12	LX31, LX41, LX50, AB62, AB46RT European SP, AB46RT Dual fuel, AB46RT, LX31/41, AB46RT, SB80, SL26, 30RT, 30SL, AB46RT 4WD, SL26RT/SL30RT, SL26N/SL30N, SL26, 30SL, 30N, LX31DD/LX41DD, AB50JRT	146TA1783
	6	250	10	SL26, 30RT, TM12, MX15, MX19, X20N, X20W, X26N, SL20D, SL26RT/SL30RT, TM12, SL20 1, SL14, AB85RJ, AB60JRT	145TA1947

USED ON UPRIGHT



SWITCHES

TOGGLE SWITCHES					
	Number of connections	Maximum voltage V	Current A	Used on	REF
	6	277	15	AB50JRT, AB85RJ, AB50JRT	126TA5378
	6	250	12	AB42, AB46RT European SP, AB46RT Dual fuel, AB46RT, AB62, AB46RT 4WD, AB46, AB46 I/C 2WD, AB46 Electric & Bi-energy	126TA5388
	3	125-350	20	AB38, MB20/26, TL38, AB38	146TA3723

SWITCH ACCESSORY



1 hole cover

Used on SL26, SL20, SL14

REF [151TA2363](#)

RUBBER BELLOWS SWITCH



- Full toggle switch
- Made of rubber
- Length: 25 mm
- Width: 17 mm
- Height: 15 mm

Used on LX31, LX41, LX50, AB46RT European SP, AB46RT, AB46RT 4WD, X series, MX15/MX19, SL26, 30RT, TM12

REF [151TA2351](#)

USED ON UPRIGHT



SENSORS

PRESSURE CONTACTS



- Thread: 1/4" BSP
- Connection: 4 x blade
- Switch mode: change over
- Pressure range: 101 bar
- Length: 84 mm

Used on SL20

REF 164TA7742



- Thread: 1/4" NPT
- Connection: 3 x wires
- Switch mode: change over
- Pressure range: 14 bar
- Length: 77,5 mm

Used on LX50, LX31, LX41,
LX31DD/LX41DD

REF 164TA7749



- Thread: 1/4" NPT
- Connection: 3 x wires
- Switch mode: change over
- Pressure range: 38 bar
- Length: 62,7 mm

Used on AB46, AB46 Electric &
Bi-energy

REF 164TA7739



- Thread: 1/4" NPT
- Connection: 3 x wires
- Switch mode: change over
- Pressure range: 52 bar
- Length: 79 mm

Used on LX31, LX41, AB46, AB46
Electric & Bi-energy

REF 164TA7747



- Thread: 1/8" BSP conical
- Connection: 1 x screw
- Switch mode: normally closed
- Pressure range: 0,6 bar
- Length: 34,5 mm

Used on LX50, LX31, LX41, AB46
I/C 2WD, AB46, SL26RT/SL30RT,
SL26N, 30SL, 30N, LX31DD/
LX41DD

REF 164TA7748



- Thread: 7/16" UNF
- Connection: 1 x loose
connector
- Switch mode: multiple,
different or with signal
- Length: 89 mm

Used on S1930E, S1932E,
S2646E, S3246E

REF 164TA7746



- Thread: 7/16" UNF
- Connection: 1 x loose
connector
- Switch mode: multiple,
different or with signal
- Pressure range:
200 bar/3000 psi
- Length: 69 mm

Used on MX19

REF 163TA7912

USED ON UPRIGHT



PLUNGER SWITCH



- Thread: 9/16" UNF
- Wrench size: 7/8"

Used on U-DRIVE25, LX31, LX41, LX50, AB46RT
European SP, AB46RT Dual fuel, AB46RT, LX31/41,
AB46RT, LX31DD/LX41DD, AB46, AB46 1/C 4WD, TL49,
AB46 Electric & Bi-energy, X20N, X20W, W26N

REF [164TA7750](#)

SENSORS

USED ON UPRIGHT



SENSORS

PROXIMITY SENSORS



- Length: 82 mm
- Width: 19 mm
- Height: 19 mm
- Switch type: NO NC
- Voltage: 250 VAC/300 VDC

Used on SL20, MW20/26

REF 164TA7586

- Length: 54 mm
- Width: 16,5 mm
- Height: 32 mm
- Switch type: NO
- Voltage: 100 V

Used on S3370, S2770, SP17, SP18, SP20, SP22

REF 164TA7569

- Height: 52 mm
- Diameter: 18 mm
- Switch type: NO-PNP output
- Voltage: 10-30 VDC

Used on MX19

REF 165TA4520

- Height: 65 mm
- Diameter: 30 mm
- Switch type: NO-PNP output
- Voltage: 10-30 VDC

Used on LX31, LX41, LX50, X20N, X20W, X26N, X26UN, X32N, SL6SL/SL30SL

REF 164TA7574

- Length: 29 mm
- Width: 19,2 mm
- Height: 7 mm
- Switch type: NO
- Voltage: 100 V

Used on MX15, MX19, TM12

REF 164TA7579

- Length: 38,5 mm
- Width: 19,2 mm
- Height: 7 mm
- Switch type: magnet

Used on LX50, LX31, LX41, SL20, XS, LX31DD, LX41DD, X series

REF 164TA7581

- Length: 38,5 mm
- Width: 19,2 mm
- Height: 7 mm
- Switch type: NO
- Voltage: 100 V

Used on LX50, LX31, LX41, SL20, X series, LX31DD/LX41DD

REF 164TA7585

USED ON UPRIGHT



SENSORS

TILT SENSORS



- Length: 103 mm
- Width: 37,5 mm
- Height: 32 mm

Used on XM19

REF 164TA7125



- Height: 113,5 mm
- Diameter: 97 mm
- Switch type: normally closed
- Voltage: 12-24 VDC
- Detection: 2°, 2-sec delay

Used on SL26, 30SL

REF 160TA3914



- Height: 11 mm
- Diameter: 43 mm

Used on U-DRIVE25, LX50, LX31/LX41/LX50, LX31, LX-50, LC41, SL26, 30SL, UL II series

REF 161TA2024



- Height: 113 mm
- Diameter: 90 mm
- Switch type: normally closed
- Voltage: 12-24 VDC
- Detection: 3°, 2,7-sec delay

Used on X20N, X20W, X26N, X26UN, X32N

REF 164TA7571



- Height: 116 mm
- Diameter: 97 mm
- Switch type: normally closed
- Voltage: 24 V
- Detection: 2°

Used on U-DRIVE25, SL20, MW15, MX19, SL26, 30RT, SL20 (12V), SL20D, SL14, SL20 1, X20N, X20W, X26N, SL26RT/SL30RT, SL26N/SL30N, TM12, SL26/30N, X series

REF 160TA4069



- Height: 116 mm
- Diameter: 86 mm
- Switch type: normally closed
- Voltage: 12-24 VDC
- Detection: 3°, 1-sec delay

Used on AB62, LX31, LX50, LX41, AB62, AB46RT EUropean SP, AB46RT, X series, XS, AB46RT 4WD, SL26, 30N, LX31DD, LX41DD, X series

REF 164TA7582



- Height: 116 mm
- Diameter: 97 mm
- Switch type: normally closed
- Voltage: 0-48 V
- Detection: 3°, 1-sec delay

Used on AB38, A38E, X26N

REF 164TA7584



- Height: 60 mm
- Diameter: 84 mm
- Switch type: normally closed
- Voltage: 12-24 VDC
- Detection: 3°, 1-sec

Used on A38E

REF 164TA7572

USED ON UPRIGHT



SENSORS

TILT SENSOR



- Height: 46,5 mm
- Diameter: 13,2 mm
- Switch type: NC horizontal or up, NO down
- Voltage: 240 V

Used on LX50, LX31, LX41, MX15, MX19, SL26, 30SL, XS, SL26RT, SL30RT, SL26N/SL30N, SL26, 30N, X series

REF [164TA7580](#)

LOAD CELLS



- Length: 145 mm
- Width: 25 mm
- Height: 19 mm

Used on AB85RJ

REF [164TA7565](#)



- Length: 175 mm
- Width: 130 mm
- Height: 80 mm

Used on AB38, A38E

REF [164TA7583](#)

USED ON UPRIGHT



BATTERY DISCHARGE INDICATOR



- Voltage: 24–48 V
- Built-in diameter: 52 mm
- Lift lock-out: yes
- Connection: 6 x blade

Used on SL20, MX15, MX19, SL20 (12V), TM12, X20N, X20W, X26UN, X32N, TM12, SL20 1, X series, SL14

REF [164TA7019](#)

HOUR METER



- Voltage: 12–48 V
- Depth: 28,5 mm
- Width: 56,5 mm
- Length: 36,5 mm
- Number of digits: 6

CURTIS

Used on LX31, LX41, LX50, AB62, AB46RT European SP, AB46RT Dual fuel, AR46RT, X series, SB80, SL20, XRT27, XRT33, SL30, 30RT, SL20, SL20 (12V), SL26, 30SL, AB46RT 4WD, AB46, MX15, MX19, SL26RT/SL30RT, SL26N/SL30N, TM12, SL20 1, 30N, AB45 Electric & Bi-energy, SL26

REF [164TA7427](#)

INDICATORS & HOUR METERS

USED ON UPRIGHT



HYDRAULIC PARTS

CARTRIDGE VALVE



- Width across flats: 7/8"
- Length: 70,4 mm
- Diameter: 15 mm

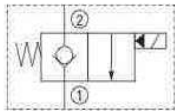
Used on AB62, AB46RT European SP, AB46 Dual fuel, AB46RT, AB46RT 4WD, AB62, AB46 I/C 2WD, AB46 Electric & Bi-energy

REF [164TA7136](#)

CARTRIDGES WITH COIL



- Voltage: 24 V
- AC/DC: DC
- Resistance: 29,1 Ω
- Diameter: 16,4 mm
- Length: 107 mm

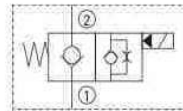


Used on TM12, SL20D, SL26RT, SL30RT, SL26N, SL30N, TM2, SL26, 30RT, 30N

REF [164TA7139](#)



- Voltage: 18 V
- AC/DC: DC
- Resistance: 15,5 Ω
- Diameter: 13,3 mm
- Length: 171 mm

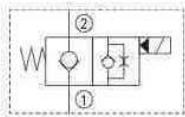


Used on MB20/26

REF [165TA4450](#)



- Voltage: 10 V
- AC/DC: DC
- Resistance: 6,3 Ω
- Diameter: 13 mm
- Length: 108 mm

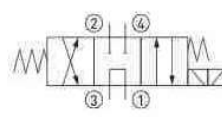


Used on SL20, XRT27, XTR33, SL20 (12V), UL II series

REF [164TA7143](#)



- Voltage: 48 V
- AC/DC: DC
- Resistance: 83 Ω
- Diameter: 16,2 mm
- Length: 191 mm

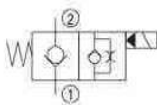


Used on AB46, AB46 Electric & Bi-energy

REF [164TA7145](#)



- Voltage: 20 V
- AC/DC: DC
- Resistance: 24,3 Ω
- Diameter: 13 mm
- Length: 76,5 mm

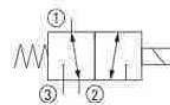


Used on X series, MX15, MX19, SL20, XS, X20N, X20W, X26N, X26UN, X32N, SL14

REF [164TA7150](#)



- Voltage: 10 V
- AC/DC: DC
- Resistance: 5,9 Ω
- Diameter: 16 mm
- Length: 119,3 mm



Used on SL26, 30SL, SL26RT/SL30RT, SL26N, SL30N, SL26, 30RT, 30SL, 30N

REF [164TA7151](#)

USED ON UPRIGHT



HYDRAULIC PARTS

CARTRIDGES WITH COIL



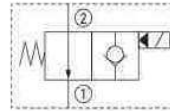
- Voltage: 10 V
- AC/DC: DC
- Resistance: 4 Ω
- Diameter: 16 mm
- Length: 106 mm

Used on MX15, MX19, SL20 1, X series, SL14

REF [164TA7152](#)



- Voltage: 20 V
- AC/DC: DC
- Resistance: 28,8 Ω
- Diameter: 13 mm
- Length: 85 mm

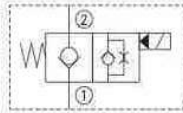


Used on X series, MX15, MX19, SL20, XS, X20N, X20W, X26N, X26UN, X32N, SL20 1

REF [164TA7154](#)



- Voltage: 20 V
- AC/DC: DC
- Resistance: 24,3 Ω
- Diameter: 13 mm
- Length: 108,4 mm



Used on X series, MX15, MX19, SL20, X20N, X20W, X26N, X26UN, X32N, SL20 1

REF [164TA7155](#)

Cartridges exist in a variety of dimensions and wiring diagrams. When placing an order, always provide the necessary info with regard to the wiring diagram, as cartridges may have identical dimensions yet be connected in different ways.

PRESSURE VALVES (FLOW)



- Thread: 3/4" UNF
- Length: 67 mm

Used on AB38, A38E

REF [164TA7703](#)



- Thread: M20 x 1,2 mm
- Length: 87 mm

Used on AB38, MB20/26, MX19, A38E, TL38, TL49, SP37, X26N,

REF [164TA7704](#)



- Thread: 7/8" UNF
- Length: 92,4 mm

Used on AB62

REF [164TA7702](#)

USED ON UPRIGHT



HYDRAULIC PARTS

HYDRAULIC BRAKE AND PART



- Diameter: 176 mm
- Height: 142 mm

REF [164TA7503](#)

HYDRAULIC MOTOR PART



Used on SL26, 30RT, 30SL,
SL26RT/SL30RT

REF [164TA7259](#)

HYDRAULIC CYLINDERS



- Hydraulic cylinder
- Total measured length: 341 mm
- Diameter tube: 66,5 mm
- Diameter rod: 25,5 mm

Used on X series, MW15, MX19,
X20N, X20W, X26N

REF [164TA7440](#)



- Special type
- Total measured length: 437 mm
- Diameter tube: 60 mm
- Diameter rod: 20 mm

Used on AB38, A38E, TL49

REF [164TA7432](#)



- Steering cylinder
- Total measured length: 279,4 mm
- Diameter tube: 114-66,5 mm
- Diameter rodd: 25,4 mm
- Piston shaft stroke: 22,4 mm

Used on SL20, SL20 (12V)

REF [164TA7438](#)



- Steering cylinder
- Total measured length: 280 mm
- Diameter tube: 60,5 mm
- Diameter rod: 25,4 mm

Used on SL20D, SL26N, SL30N,
SL20 1, SL26, 30N, SL20

REF [164TA7433](#)



- Steering cylinder
- Total measured length: 580 mm
- Diameter tube: 67 mm
- Diameter rod: 38 mm

Used on SL20, MW15, MX19,
SL20 (12V)

REF [164TA7437](#)



- Steering cylinder
- Total measured length: 670 mm
- Diameter tube: 60 mm
- Diameter rod: 35 mm

Used on AB38, A38E

REF [164TA7439](#)

USED ON UPRIGHT



HYDRAULIC CYLINDERS



- Steering cylinder
- Total measured length: 806 mm
- Diameter tube: 95,25 mm
- Diameter rod: 50,8 mm

Used on AB46RT 4WD, AB46RT European SP, AB46RT Dual fuel, AB46, AB46 I/C 2WD, AB46 Electric & Bi-energy

REF [164TA7436](#)



- Tilt cylinder or double-acting
- Total measured length: 288 mm
- Diameter tube: 65 mm
- Diameter rod: 20 mm
- Piston shaft stroke: 76 mm

Used on TM12

REF [164TA7428](#)



- Tilt cylinder or double-acting
- Total measured length: 290 mm
- Diameter tube: 65 mm
- Diameter rod: 20 mm
- Piston shaft stroke: 68 mm

Used on TM12

REF [164TA7442](#)



- Tilt cylinder or double-acting
- Total measured length: 905 mm
- Diameter tube: 100 mm
- Diameter rod: 45 mm
- Piston shaft stroke: 435 mm

Used on AB38, A38E

REF [164TA7435](#)

HYDRAULIC PARTS

HYDRAULIC HOSE



- Length: 860 mm
- Pressure: WP 350 bar

REF [164TA7237](#)

USED ON UPRIGHT

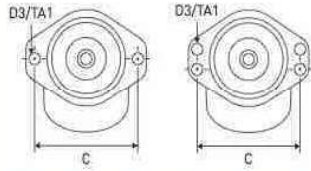


HYDRAULIC PARTS

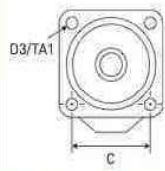
HYDRAULIC MOTORS

Type of flange

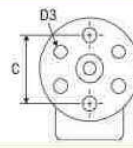
Type A



Type C



Type D
Number of holes is not important for this type



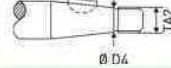
Type S: special shape, none of the previous types

Type of shaft

Type C



Type E



	Thread connections inch	Type of flange	Type of shaft	Total length mm	Used on	REF
	3/8" BSP	D	E	277	X20N, X20W, X26N, X26UN, X32N	164TA7263
	1 1/16" UNF	C	E	380	LX50, LX31, LX41	131TA9498
	1 1/16" UNF	S	E	381	LX31, LX41, LX50	164TA7254
	3/8" BSP	D	E	265	MX19	164TA7260
	3/8" BSP	C	E	206	TM12	164TA7253
	9/16" UNF	S	E	205	TM12	164TA7258
	9/16" UNF	C	E	211	SL20, SL20 (12V)	131TA6815

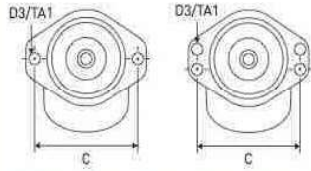
USED ON UPRIGHT



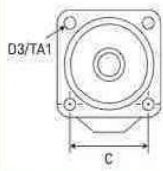
HYDRAULIC MOTORS

Type of flange

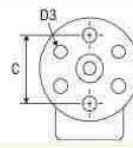
Type A



Type C



Type D
Number of holes is not important for this type



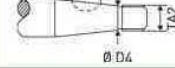
Type S: special shape, none of the previous types

Type of shaft

Type C



Type E



HYDRAULIC PARTS

	Thread connections inch	Type of flange	Type of shaft	Total length mm	Used on	REF
	7/8" UNF	A	C	217,7	LX50, LX31, LX41, LX31DD, LX41DD	164TA7256
	7/8" UNF	C	E	239	X series, SL20D, SL20, X20N, X20W, X26N, SL20 1	131TA6830
	7/8" UNF	A	C	294	SL26, 30RT, SL26RT, SL30RT, 30SL	131TA6899
	7/8" UNF	C	E	233	MX15, MX19, TM12	131TA6825
	7/8" UNF	C	E	301	SL26N, SL30N, SL26, 30N	164TA7257
	7/8" UNF	C	E	319	SK26, 30RT, 30SL, SL26RT, SL30RT, SL26N, SL30N, SL26, 30N	131TA6819

USED ON UPRIGHT



HYDRAULIC PARTS

HYDRAULIC PUMPS					
	Total length	Neck diameter	Direction of rotation	Material of housing	REF
	mm	mm			
	102	45,2	CCW	Aluminium	164TA7268
	121	45,2	CCW	Aluminium	147TA6760
	136,3	45,2	CCW	Metal	164TA7275
	157	31,7	CW	Metal	165TA4521

USED ON UPRIGHT



HYDRAULIC PUMP GROUPS				
	Electric motor V	AC/DC	Power kW	REF
	24	DC	2,4	164TA7248
	24	DC	2,4	164TA7249
	24	DC	3	164TA7247
	48	DC	4	164TA7245
	48	DC	2,57	164TA7244

HYDRAULIC PARTS



USED ON UPRIGHT



HYDRAULIC PARTS

LINK STEERING CYLINDERS



- Type: A
- Minimum distance between holes: 78 mm
- Maximum width at the hole: 21 mm
- Total length: 137 mm
- Diameter smallest hole: 17 mm

REF [164TA7599](#)



- Type: B
- Minimum distance between holes: 129 mm
- Maximum width at the hole: 9,8 mm
- Total length: 198,5 mm
- Diameter smallest hole: 22 mm

REF [164TA7606](#)



- Type: B
- Minimum distance between holes: 129 mm
- Maximum width at the hole: 9,8 mm
- Total length: 198,5 mm
- Diameter smallest hole: 22 mm

REF [164TA7607](#)



- Type: B
- Minimum distance between holes: 148 mm
- Maximum width at the hole: 10,4 mm
- Total length: 209 mm
- Diameter smallest hole: 12,7 mm

REF [164TA7598](#)



- Type: C
- Minimum distance between holes: 160 mm
- Maximum width at the hole: 57 mm
- Total length: 127 mm
- Diameter smallest hole: 16 mm

REF [164TA7608](#)

USED ON UPRIGHT



ENGINE PARTS

EXHAUST CLAMP



- Inside clamp diameter: 45 mm
- Length: 43,2 mm

Used on SL20, MX19

REF [155TA1161](#)

FUEL PUMP



- Total height: 90 mm
- Centre distance: 36 mm
- Number of holes: 2

Used on LX31, LX41, LX50, AB46RT, AB46 I/C 2WD, AB46

REF [152TA3228](#)

ENGINE STOP SOLENOIDS



- Voltage: 12 V
- Type of current: DC
- Function: pull
- Mounting side: both sides
- Length: 160,5 mm

REF [122TA7873](#)



- Voltage: 12 V
- Type of current: DC
- Function: pull
- Mounting side: both sides
- Length: 162,5 mm

REF [151TA2316](#)



- Voltage: 12 V
- Type of current: DC
- Function: pull
- Mounting side: both sides
- Length: 59,7 mm

REF [151TA2362](#)



- Voltage: 12 V
- Type of current: DC
- Function: pull
- Mounting side: both sides
- Length: 128,7 mm

REF [135TA2497](#)



- Voltage: 12 V
- Type of current: DC
- Function: pull
- Mounting side: both sides
- Length: 196 mm

REF [122TA7879](#)

USED ON UPRIGHT



ENGINE PARTS

V-BELT



- Belt width string: 10 mm
- Belt height: 7,5 mm
- Outside length: 950 mm

Used on LX31, LX41, LX50, AB46 I/C 2WD, AB46, LX31DD, LX41DD

REF [106TA9059](#)

STARTERS



- Voltage: 12 V
- Power: 1 kW
- Number of teeth: 9

REF [103TA3220](#)



- Voltage: 12 V
- Power: 1 kW
- Number of teeth: 9

REF [164TA7610](#)



- Voltage: 12 V
- Power: 1,4 kW
- Number of teeth: 15

REF [103TA3408](#)



- Voltage: 12 V
- Power: 2,1 kW
- Number of teeth: 10

REF [103TA3314](#)



- Voltage: 24 V
- Power: 1,4 kW
- Number of teeth: 9

REF [165TA4522](#)

USED ON UPRIGHT



FILTERS					
	Outer diameter mm	Inner diameter mm	Height mm	Used on	REF
Oil filters					
	97	23,2	138	AB46RT European SP, AB46RT Dual fuel, AB46RT, SL20, XRT27, XTR33, SL20 (12V), X series, MX19, X20N, X20W, X26N, X26UN, X32N, MX15, AB46RT 4 WD, AB46 I/C 2WD, SL20D, SL20 1, SL14, TL38, AL33	139TA6823
	50	25,3	76,7	AB38, MB20/26, A38E, TL49	147TA6571
	96	24,6	140	MX19, TL38, TL33	152TA2826
	52	24,5	65,6	MX19, TL38, TL33	165TA4523
	85	18,5	78,0	AB46RT European SP, AB46RT, AB46RT 4 WD, AB46, AB46 Electric & Bi-Energy	139TA5975
	43	43,5	162	TL34	165TA4183

FILTERS

USED ON UPRIGHT



BODY & CHASSIS PARTS

CABIN ACCESSORY



- Length: 245 mm
- Width: 24 mm
- Height: 45 mm
- Diameter holes: 6,7 mm

Used on AB38, SL20, A38E, T38, S3370BE, S2770RT

REF [151TA1695](#)

CHASSIS ACCESSORIES



- Diameter: 105 mm
- Height: 37,5 mm

Used on U-DRIVE25, UL II series

REF [164TA7099](#)



- Length: 154 mm
- Width: 154 mm
- Height: 89 mm

Used on AB38, A38E

REF [164TA7097](#)



- Length: 540 mm
- Width: 410 mm
- Height: 65 mm

Used on MB20/26

REF [164TA7098](#)

BALL JOINT



- Type of rod end: inner thread
- Length: 32 mm
- Thread: 1/4" UNF
- RH/LH thread: RH

Used on LX50, LX31, LX41, AB46RT European SP, AB46RT Dual fuel, AB46RT, AB46, XRT27, XRT33, AB46 Electric & Bi-energy, SL26RT, SL30RT, SL26N, SL30N, SL26, 30N, LX31DD, LX41DD

REF [105TA1476](#)

USED ON UPRIGHT



BODY & CHASSIS PARTS

BALL JOINT ROD END



- Outer diameter: 18,7 mm
- Inner diameter: 6,4 mm
- Height: 30 mm

Used on LX50, LX31, LX41, AB46RT European SP, AB46RT, AB46RT Dual fuel, AB46, AB46 AB46 Electric & Bi-energy, AB46RT 4WD, AB45 I/C 2WD, SL26RT, SL30RT, SL26N, SL30N, SL26, 30N, LX31DD, LX41DD

REF [164TA7513](#)

CONTROL CABLES

	Length cable mm	Diameter cable mm	Length sleeve mm	Used on	REF
	1465	3,6	1280	TL38, TL33	151TA1698
	2410	2,0	2270	MX19	164TA7314
	2515	1,3	2385	MX15, MX19	164TA7318
	2960	3,2	2540	X20N, X20W, X26N	165TA4524
	3000	1,0	2850	MX19	164TA7317
	4700	1,2	4590	X series, X20N, X20W, X26UN, X32N, X26N	164TA7316

USED ON UPRIGHT



BODY & CHASSIS PARTS

DOOR HANDLES



- Length: 120 mm
- Width: 30 mm
- Height: 60 mm

Used on SL26SL, SL30SL, S3370, S2770

REF 164TA7290



- Length: 121 mm
- Width: 92 mm
- Height: 35,7 mm

Used on X series, XRT27, XRT33, X20N, X20W, X26N, X26UN, X32N

REF 164TA7302



- Length: 125 mm
- Width: 41,5 mm
- Height: 20 mm

Used on AB38, MX19, A38E, TL38, TL33

REF 164TA7301



- Length: 66 mm
- Width: 53 mm
- Height: 21 mm

Used on SL20

REF 164TA7297



- Length: 67 mm
- Width: 84 mm

Used on TM12

REF 164TA7298



- Length: 80 mm
- Width: 29,5 mm
- Height: 21,5 mm

Used on SL50, LX31, LX41, SL20, MX15, MX19, SL26, 30RT, SL20 (12V), SL26, 30SL, SL20D, SL26RT, SL30RT, SL26N, SL30N, SL20 1, 30SL, 30N, LX31DD, LX41DD, SL26, SL20, SL14

REF 164TA7303



- Length: 84 mm
- Width: 40 mm
- Height: 57 mm

Used on LX50, LX31, LX41, SL26, 30RT, 20SL, 30SL, MB20/26, 30N, LX31DD, LX41DD

REF 164TA7300

USED ON UPRIGHT



FLANGE



- Total length: 34,4 mm
- Biggest diameter: 180 mm
- Number of mounting holes: 4
- Type flange: mainly round

Used on SL20

REF [164TA7241](#)

CABLE GUIDES



- Outside dimensions: 89 x 50 mm
- Inside dimensions: 73 x 35 mm
- Material: plastic

Used on AB38, A38E

REF [164TA7320](#)



- Outside dimensions: 92 x 63,5 mm
- Inside dimensions: 73 x 44,5 mm
- Material: plastic

Used on AB38, SP37

REF [164TA7319](#)



- Outside dimensions: 90,5 x 50 mm
- Inside dimensions: 76 x 34 mm
- Material: plastic

Used on AB38, A38E

REF [164TA7323](#)

CABLE GUIDE PART



- Kit of 2 pieces
- Length: 79 mm
- Width: 93 mm

Used on AB38, A38E

REF [160TA2645](#)

TUBE



- Total length: 665 mm
- Diameter: 32 mm

Used on AB38, MB20/26

REF [164TA7011](#)

USED ON UPRIGHT



BODY & CHASSIS PARTS

WEAR PADS



- Diameter: 148 mm
- Material: plastic

Used on X series, MX15, MX19, XRT27, XRT33, X20N, X20W, X26N, X26UN, X32N

REF [164TA7178](#)



- Diameter: 40 mm
- Material: plastic

Used on X26, X32

REF [164TA7187](#)



- Diameter: 51 mm
- Thickness: 5,7 mm
- Material: plastic

Used on MX15, MX19

REF [164TA7657](#)



- Length: 100 mm
- Material: plastic

Used on A38E, TL49, SP37, A38E

REF [164TA7193](#)



- Length: 100 mm
- Material: plastic

Used on AB38, A38E

REF [164TA7194](#)



- Length: 127 mm
- Material: plastic

Used on TM12

REF [164TA7195](#)



- Length: 127 mm
- Material: plastic

Used on TM12

REF [164TA7196](#)



- Length: 141 mm
- Material: plastic

Used on U-DRIVE25, UL II series

REF [164TA7201](#)

USED ON UPRIGHT



WEAR PADS



- Length: 420 mm
- Material: plastic

Used on X26N

REF [164TA7180](#)



- Length: 82,3 mm
- Material: plastic

Used on X15, MX19

REF [164TA7190](#)



- Length: 76,5 mm
- Material: plastic

Used on X series, X20N, X20W, X26N, X26UN, X32N

REF [165TA4525](#)

BODY & CHASSIS PARTS



USED ON UPRIGHT



COVERS & ACCESSORIES

PROTECTIVE COVERS



- Length: 2650 mm
- Width: 1550 mm
- Height: 7300 mm

Used on UL II Series

REF [164TA7112](#)



- Length: 410 mm
- Width: 395 mm
- Height: 75 mm

Used on UL II series

REF [164TA7116](#)



- Length: 840 mm
- Width: 410 mm

Used on AB38, A38E

REF [164TA7118](#)



- Length: 212 mm
- Width: 130 mm
- Height: 90 mm

Used on X series, SL20, XRT27, XRT33, X20N, X20W, X26N, X26UN, X32N

REF [164TA7417](#)

GAS SPRINGS/SHOCK ABSORBERS



- Push type
- Force: 380 N
- Centre distance: 305 mm

Used on U-DRIVE25, MX50, LX31, LX41, AB46RT European SP, AB46RT Dual fuel, AB46RT, SL26, 30RT, 30SL, UL II series, AB46RT 4WD, AB46, AB46 I/C 2WD, 30N, LX31DD, LX41DD, AB46 Electric & Bi-energy

REF [164TA7204](#)



- Push type
- Force: 1200 N
- Centre distance: 560 mm

Used on AB62

REF [165TA4526](#)

USED ON UPRIGHT



DECALS

DECALS



- Length: 160 mm
- Height: 82 mm

Used on U-DRIVE25, LX50, LX31, LX41, AB62, AB46RT European SP, AB46RT, AB46RT 4WD, AB46 I/C 2WD, X series, SB80, SL20, XRT27, XRT33, SL26, 30RT, SL20 (12V), 30SL, TM12, X20N, X20W, X26N, X26UN, X32N, MX15, MX19, SL26RT, SL30RT, SL26N, SL30N, SL20 1, 30N, UL25, UL32, UL40, LX31DD, LX41DD

REF [164TA7367](#)



- Length: 116 mm
- Height: 68 mm

Used on LX50, LX31, LX41, AB62, AB46RT European SP, AB46RT Dual fuel, AB46RT, AB46RT 4WD, AB46, AB46RT I/C 2WD, SL20, X series, SB80, XTR27, XTR33, SL26, 30RT, SL20 (12V), 30SL, TM12, X20N, X20W, X26N, X226UN, X32N, MX15, MX19, SL26RT, SL30RT, SL26N, SL30N, SL26, 30N, SL20 1, LX31DD, LX41DD, X series

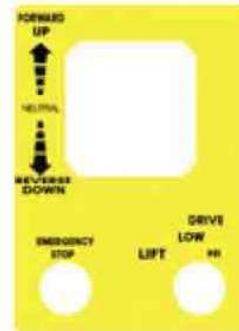
REF [164TA7369](#)



- Length: 276 mm
- Height: 178 mm

Used on X series, MX15, MX19, X20N, X20W, X26N, X26UN, X32N

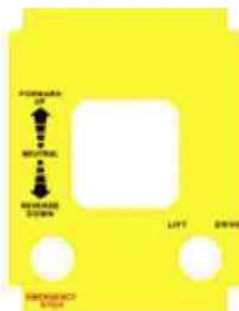
REF [164TA7363](#)



- Length: 135 mm
- Height: 185 mm

Used on X series

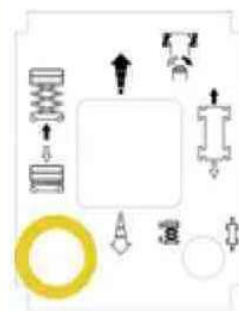
REF [126TA9853](#)



- Length: 168 mm
- Height: 211 mm

Used on MX15, MX19, SL20

REF [163TA5402](#)



- Length: 168 mm
- Height: 211 mm

Used on MX19, X series, X20N, X26N, X26N, X26UN, X32N

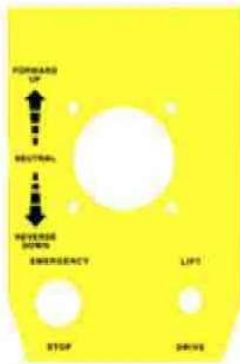
REF [163TA4296](#)

USED ON UPRIGHT



DECALS

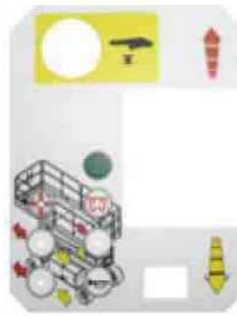
DECALS



- Length: 136 mm
- Height: 202 mm

Used on MX15, MX19, SL20 1

REF [164TA7360](#)



- Length: 158 mm
- Height: 203 mm

Used on SL26SL, SL30SL

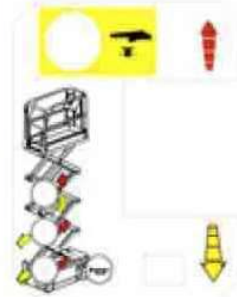
REF [162TA9081](#)



- Length: 196 mm
- Height: 145 mm

Used on AB38, A38E

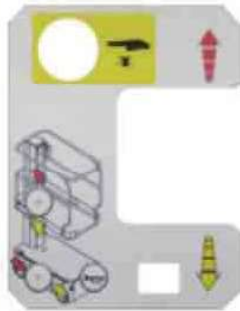
REF [138TA3429](#)



- Length: 158 mm
- Height: 203 mm

Used on MX19, X26N

REF [163TA7213](#)



- Length: 160 mm
- Height: 203 mm

Used on TM12

REF [138TA3822](#)



- Length: 275 mm
- Height: 173 mm

Used on MX19

REF [163TA4849](#)



- Length: 149 mm
- Height: 259 mm

Used on AB28

REF [138TA2785](#)



- Length: 171 mm
- Height: 278 mm

Used on TM12

REF [163TA6842](#)

USED ON UPRIGHT



DECALS

DECALS



- Length: 508 mm
- Height: 138 mm

Used on AB62

REF [164TA7358](#)



- Length: 80 mm
- Height: 70 mm

Used on SL20, MX19, MX20/26, X series, TM12

REF [138TA2474](#)



- Length: 90 mm
- Height: 117 mm

Used on LX50, LX31, LX41, AB62, AB46RT European SP, AB46RT Dual fuel, AB46RT, AB46, AB46RT 4WD, AB46 I/C 2WD, X series, AB46RT, SB80, MX15, MX19, XRT27, XRT33, X20N, X20W, X26N, X26UN, X32N, LX31DD, LX41DD

REF [164TA7368](#)



- Length: 90 mm
- Height: 150 mm

Used on LX50, LX31, LX41, X series, SB80, MX15, MX19, LX31DD, LX41DD, X20N, X20W, X26N, X26UN, X32N

REF [126TA9792](#)



USED ON UPRIGHT



WHEELS & TYRES

CASTORS



- Diameter wheel: 100 mm
- Number of bolt holes: 4
- Width wheel: 50 mm
- Total height: 130 mm

Used on U-DRIVE25, UL II series

REF [164TA7753](#)



- Diameter wheel: 102 mm
- Number of bolt holes: 4
- Width wheel: 32 mm
- Total height: 130 mm

Used on UL SERIES

REF [164TA7752](#)



- Diameter wheel: 150 mm
- Number of bolt holes: 4
- Width wheel: 50 mm
- Total height: 195 mm

Used on U-DRIVE25, UL II series

REF [164TA7754](#)

HUB WHEELS



- Total height: 56,3 mm
- Conical mounting hole: 38,2-32 mm
- Number of holes: 6

Used on MX50, LX31, LX41

REF [164TA7242](#)



- Total height: 38,1 mm
- Conical mounting hole: 31,5-26,95 mm
- Number of holes: 4

Used on X series, SL20, SL20 (12V), X20N, X20W, X26N, X26UN, X32N

REF [164TA7239](#)

USED ON UPRIGHT



LOAD WHEELS					
	Diameter wheel mm	Width wheel mm	Diameter shaft mm	Used on	REF
	254	58,4	19,1	U-DRIVE25, UL II series	151TA2605
	305	100	31,8	MX19	164TA7723
	305	100	31,8	MX19	141TA4894
	305	105	31,7	MX15, MX19	151TA2514
	305	76	44,5	TM12	164TA7728

WHEELS & TYRES



USED ON UPRIGHT



WHEELS & TYRES

TRACTION WHEELS						
	Diameter wheel	Width wheel	Diameter shaft	Number of bolt holes	Used on	REF
	mm	mm	mm			
	305	100	113	4	MX19	147TA2786
	305	100	28	0	MX19	141TA4895
	305	76	27	2	TM12	129TA9844
	305	76	27	0	TM12, M1230E	145TA9136
	340	102	113	4	MB20/26	129TA8942

USED ON UPRIGHT



TRACTION WHEELS						
	Diameter wheel	Width wheel	Diameter shaft	Number of bolt holes	Used on	REF
	mm	mm	mm			
	342	102	96	5	MB20/26	129TA9048
	380	127	113	4	SL20	164TA7729
	380	118	86	4	SL20, X series, SL20 (12V), X20N, X20W, X26N, X32N, X26UN	129TA8940
	414	120	86	5	SL20D, SL20	129TA9045
	559	229	110	5	AB38, A38E	164TA7725

WHEELS & TYRES



USED ON UPRIGHT



WHEELS & TYRES

PNEUMATIC TYRES



- Tubeless tyre
- Dimensions: 10 x 16,5

Used on LX50, LX41, LX31, AB46 I/C 2WD, AB46, MX31DD, LX41DD

REF [152TA1854](#)



- Tubeless tyre
- Dimensions: 14 x 17,5

Used on AB46RT, AB46RT 4WD

REF [152TA1859](#)

WHEEL BOLT



- Length: 38,3 mm
- Thread type: 1/2" UNF
- Imperial pitch: 20 Pi
- RH/LH: RH

Used on LX50, LX31, LX41, XRT27, XRT33, SL26, 30SL, 30RT, SL20D, SL26RT, SL30RT, SL26N, SL30N, SL20 1, 30N, X20N, X20W, X26N

REF [164TA7733](#)

WHEEL NUT



- Type: cone head
- Thread: 9/16" UNF
- Imperial pitch: 18 Pi
- Wrench opening: 1"

Used on LX50, LX31, LX41, AB46RT European SP, AB46RT Dual fuel, AB46RT, AB46RT 4WD, AB46RTI/C 2WD, AB46, LX31DD, LX41DD, AB46 Electric Bi-energy

REF [104TA9936](#)

USED ON UPRIGHT



AXLES/PINS			
	Diameter mm	Total length mm	REF
	15,8	56	164TA7001
	19,0	40	164TA7006
	19,0	50	164TA7010
	19,0	57,5	161TA1876
	30,0	185	164TA7005
	31,7	50	164TA7012

HARDWARE

USED ON UPRIGHT



HARDWARE

LOCKING PINS



- Diameter pin: 10 mm
- Total length: 63,5 mm

Used on MX19

REF [164TA7227](#)

- Diameter pin: 9,5 mm
- Length: 69,8 mm

Used on LX31, LX41, LX50, X20N, X20W, X226N, X26UN, X32N

REF [164TA7420](#)

- Diameter pin: 9,4 mm
- Total length: 275 mm
- Length tether: 155 mm

Used on AB85RJ

REF [164TA7208](#)

- Diameter pin: 9,5 mm
- Total length: 52 mm

Used on U-DRIVE25, LX50, LX31, LX41, MX15, MX19, SL20, XRT27, XRT33, SL26, 30SL, 30RT, LX31DD, LX41DD, X series, X20N, X20W, X26N, X26UN, X32N, UL II series, X series, SL26RT, SL30RT, SL26N, SL30N, SL26, 30N, LX31DD, LX41DD, SL20, SL14

REF [164TA7304](#)

USED ON UPRIGHT



SERVICE HAND CONSOLES

OTHER PARTS



- Optimizer OPTZ-4**
- Controller brands: OEM controls
 - Controller types: Superflex 4 SB controllers
 - Type: ICE machines
 - Serial communication

REF 164TA7425



Overload calibrator

REF 164TA7577



MOS90 Handset

- REF 106TA6377**
- Controller type: MOS90
 - Type: electric machines
 - Serial communication

- REF 145TA2488**
- Cable
 - For MOS90 handset
 - Adapter cable MOS90 handset to Millipak



- Upright – diagnostic tool
- Controller brand: Trionic
 - Controller types: multiple
 - Types: ICE/electric machines
 - Serial communication
 - Type of connector: 4-pins

REF 163TA8215

