

USED ON UPRIGHT



HYDRAULIC PARTS

CARTRIDGE VALVE



- Width across flats: 7/8"
- Length: 70,4 mm
- Diameter: 15 mm

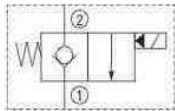
Used on AB62, AB46RT European SP, AB46 Dual fuel, AB46RT, AB46RT 4WD, AB62, AB46 I/C 2WD, AB46 Electric & Bi-energy

REF 164TA7136

CARTRIDGES WITH COIL



- Voltage: 24 V
- AC/DC: DC
- Resistance: 29,1 Ω
- Diameter: 16,4 mm
- Length: 107 mm

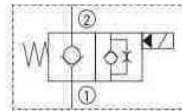


Used on TM12, SL20D, SL26RT, SL30RT, SL26N, SL30N, TM2, SL26, 30RT, 30N

REF 164TA7139



- Voltage: 18 V
- AC/DC: DC
- Resistance: 15,5 Ω
- Diameter: 13,3 mm
- Length: 171 mm

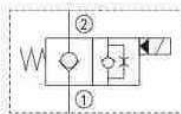


Used on MB20/26

REF 165TA4450



- Voltage: 10 V
- AC/DC: DC
- Resistance: 6,3 Ω
- Diameter: 13 mm
- Length: 108 mm

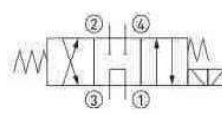


Used on SL20, XRT27, XTR33, SL20 (12V), UL II series

REF 164TA7143



- Voltage: 48 V
- AC/DC: DC
- Resistance: 83 Ω
- Diameter: 16,2 mm
- Length: 191 mm

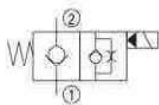


Used on AB46, AB46 Electric & Bi-energy

REF 164TA7145



- Voltage: 20 V
- AC/DC: DC
- Resistance: 24,3 Ω
- Diameter: 13 mm
- Length: 76,5 mm

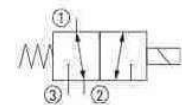


Used on X series, MX15, MX19, SL20, XS, X20N, X20W, X26N, X26UN, X32N, SL14

REF 164TA7150



- Voltage: 10 V
- AC/DC: DC
- Resistance: 5,9 Ω
- Diameter: 16 mm
- Length: 119,3 mm



Used on SL26, 30SL, SL26RT/SL30RT, SL26N, SL30N, SL26, 30RT, 30SL, 30N

REF 164TA7151

USED ON UPRIGHT



HYDRAULIC PARTS

CARTRIDGES WITH COIL



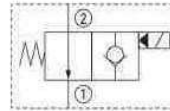
- Voltage: 10 V
- AC/DC: DC
- Resistance: 4 Ω
- Diameter: 16 mm
- Length: 106 mm

Used on MX15, MX19, SL20 1, X series, SL14

REF 164TA7152



- Voltage: 20 V
- AC/DC: DC
- Resistance: 28,8 Ω
- Diameter: 13 mm
- Length: 85 mm

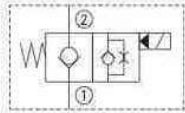


Used on X series, MX15, MX19, SL20, XS, X20N, X20W, X26N, X26UN, X32N, SL20 1

REF 164TA7154



- Voltage: 20 V
- AC/DC: DC
- Resistance: 24,3 Ω
- Diameter: 13 mm
- Length: 108,4 mm



Used on X series, MX15, MX19, SL20, X20N, X20W, X26N, X26UN, X32N, SL20 1

REF 164TA7155

Cartridges exist in a variety of dimensions and wiring diagrams. When placing an order, always provide the necessary info with regard to the wiring diagram, as cartridges may have identical dimensions yet be connected in different ways.

PRESSURE VALVES (FLOW)



- Thread: 3/4" UNF
- Length: 67 mm

Used on AB38, A38E

REF 164TA7703



- Thread: M20 x 1,2 mm
- Length: 87 mm

Used on AB38, MB20/26, MX19, A38E, TL38, TL49, SP37, X26N,

REF 164TA7704



- Thread: 7/8" UNF
- Length: 92,4 mm

Used on AB62

REF 164TA7702

USED ON UPRIGHT



HYDRAULIC PARTS

HYDRAULIC BRAKE AND PART



- Diameter: 176 mm
- Height: 142 mm

REF [164TA7503](#)

HYDRAULIC MOTOR PART



Used on SL26, 30RT, 30SL,
SL26RT/SL30RT

REF [164TA7259](#)

HYDRAULIC CYLINDERS



- Hydraulic cylinder
- Total measured length: 341 mm
- Diameter tube: 66,5 mm
- Diameter rod: 25,5 mm

Used on X series, MW15, MX19,
X20N, X20W, X26N

REF [164TA7440](#)



- Special type
- Total measured length: 437 mm
- Diameter tube: 60 mm
- Diameter rod: 20 mm

Used on AB38, A38E, TL49

REF [164TA7432](#)



- Steering cylinder
- Total measured length: 279,4 mm
- Diameter tube: 114-66,5 mm
- Diameter rodd: 25,4 mm
- Piston shaft stroke: 22,4 mm

Used on SL20, SL20 (12V)

REF [164TA7438](#)



- Steering cylinder
- Total measured length: 280 mm
- Diameter tube: 60,5 mm
- Diameter rod: 25,4 mm

Used on SL20D, SL26N, SL30N,
SL20 1, SL26, 30N, SL20

REF [164TA7433](#)



- Steering cylinder
- Total measured length: 580 mm
- Diameter tube: 67 mm
- Diameter rod: 38 mm

Used on SL20, MW15, MX19,
SL20 (12V)

REF [164TA7437](#)



- Steering cylinder
- Total measured length: 670 mm
- Diameter tube: 60 mm
- Diameter rod: 35 mm

Used on AB38, A38E

REF [164TA7439](#)

USED ON UPRIGHT



HYDRAULIC CYLINDERS



- Steering cylinder
- Total measured length: 806 mm
- Diameter tube: 95,25 mm
- Diameter rod: 50,8 mm

Used on AB46RT 4WD, AB46RT European SP, AB46RT Dual fuel, AB46, AB46 I/C 2WD, AB46 Electric & Bi-energy

REF [164TA7436](#)



- Tilt cylinder or double-acting
- Total measured length: 288 mm
- Diameter tube: 65 mm
- Diameter rod: 20 mm
- Piston shaft stroke: 76 mm

Used on TM12

REF [164TA7428](#)



- Tilt cylinder or double-acting
- Total measured length: 290 mm
- Diameter tube: 65 mm
- Diameter rod: 20 mm
- Piston shaft stroke: 68 mm

Used on TM12

REF [164TA7442](#)



- Tilt cylinder or double-acting
- Total measured length: 905 mm
- Diameter tube: 100 mm
- Diameter rod: 45 mm
- Piston shaft stroke: 435 mm

Used on AB38, A38E

REF [164TA7435](#)

HYDRAULIC PARTS

HYDRAULIC HOSE



- Length: 860 mm
- Pressure: WP 350 bar

REF [164TA7237](#)

USED ON UPRIGHT

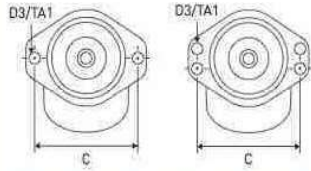


HYDRAULIC PARTS

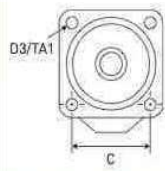
HYDRAULIC MOTORS

Type of flange

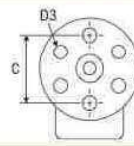
Type A



Type C



Type D
Number of holes is not important for this type



Type S: special shape, none of the previous types

Type of shaft

Type C



Type E



	Thread connections inch	Type of flange	Type of shaft	Total length mm	Used on	REF
	3/8" BSP	D	E	277	X20N, X20W, X26N, X26UN, X32N	164TA7263
	1 1/16" UNF	C	E	380	LX50, LX31, LX41	131TA9498
	1 1/16" UNF	S	E	381	LX31, LX41, LX50	164TA7254
	3/8" BSP	D	E	265	MX19	164TA7260
	3/8" BSP	C	E	206	TM12	164TA7253
	9/16" UNF	S	E	205	TM12	164TA7258
	9/16" UNF	C	E	211	SL20, SL20 (12V)	131TA6815

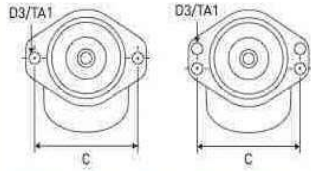
USED ON UPRIGHT



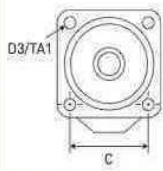
HYDRAULIC MOTORS

Type of flange

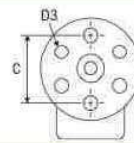
Type A



Type C



Type D
Number of holes is not important for this type



Type S: special shape, none of the previous types

Type of shaft

Type C



Type E



HYDRAULIC PARTS

	Thread connections inch	Type of flange	Type of shaft	Total length mm	Used on	REF
	7/8" UNF	A	C	217,7	LX50, LX31, LX41, LX31DD, LX41DD	164TA7256
	7/8" UNF	C	E	239	X series, SL20D, SL20, X20N, X20W, X26N, SL20 1	131TA6830
	7/8" UNF	A	C	294	SL26, 30RT, SL26RT, SL30RT, 30SL	131TA6899
	7/8" UNF	C	E	233	MX15, MX19, TM12	131TA6825
	7/8" UNF	C	E	301	SL26N, SL30N, SL26, 30N	164TA7257
	7/8" UNF	C	E	319	SK26, 30RT, 30SL, SL26RT, SL30RT, SL26N, SL30N, SL26, 30N	131TA6819

USED ON UPRIGHT



HYDRAULIC PARTS

HYDRAULIC PUMPS					
	Total length	Neck diameter	Direction of rotation	Material of housing	REF
	mm	mm			
	102	45,2	CCW	Aluminium	164TA7268
	121	45,2	CCW	Aluminium	147TA6760
	136,3	45,2	CCW	Metal	164TA7275
	157	31,7	CW	Metal	165TA4521

USED ON UPRIGHT



HYDRAULIC PUMP GROUPS				
	Electric motor V	AC/DC	Power kW	REF
	24	DC	2,4	164TA7248
	24	DC	2,4	164TA7249
	24	DC	3	164TA7247
	48	DC	4	164TA7245
	48	DC	2,57	164TA7244

HYDRAULIC PARTS

USED ON UPRIGHT



HYDRAULIC PARTS

LINK STEERING CYLINDERS



- Type: A
- Minimum distance between holes: 78 mm
- Maximum width at the hole: 21 mm
- Total length: 137 mm
- Diameter smallest hole: 17 mm

REF [164TA7599](#)

- Type: B
- Minimum distance between holes: 129 mm
- Maximum width at the hole: 9,8 mm
- Total length: 198,5 mm
- Diameter smallest hole: 22 mm

REF [164TA7606](#)

- Type: B
- Minimum distance between holes: 129 mm
- Maximum width at the hole: 9,8 mm
- Total length: 198,5 mm
- Diameter smallest hole: 22 mm

REF [164TA7607](#)

- Type: B
- Minimum distance between holes: 148 mm
- Maximum width at the hole: 10,4 mm
- Total length: 209 mm
- Diameter smallest hole: 12,7 mm

REF [164TA7598](#)

- Type: C
- Minimum distance between holes: 160 mm
- Maximum width at the hole: 57 mm
- Total length: 127 mm
- Diameter smallest hole: 16 mm

REF [164TA7608](#)