

# PAINT AND ACCESSORIES



For all our latest catalogue updates and company info: [www.tvh.com](http://www.tvh.com)

PAINT

## PAINT USED FOR AICHI



**Blue**  
Crawler machine  
REF [136TA1249](#) – 2,5 l



**Blue**  
Scissor lifts  
REF [136TA1250](#) – 2,5 l



**Grey**  
REF [136TA1251](#) – 2,5 l

## PAINT USED FOR ATLET



**Yellow**  
REF [107TA7282](#) – 2,5 l  
REF [145TA1316](#) – 400 ml  
(spray)



**Yellow**  
1997  
REF [122TA7465](#) – 2,5 l



**Grey**  
1997  
REF [122TA7466](#) – 2,5 l



**Red**  
REF [122TA9101](#) – 2,5 l  
REF [145TA1317](#) – 400 ml  
(spray)

## PAINT USED FOR AUSA



**Orange**  
REF [141TA7734](#) – 2,5 l  
REF [144TA9652](#) – 400 ml  
(spray)



**Grey**  
REF [141TA7735](#) – 2,5 l  
REF [144TA9653](#) – 400 ml  
(spray)

## PAINT USED FOR BAUMAN



**Yellow**  
REF [122TA9102](#) – 2,5 l  
REF [145TA1318](#) – 400 ml  
(spray)



**Grey**  
REF [122TA9103](#) – 2,5 l

## PAINT USED FOR BOBCAT



**White**  
REF [144TA7283](#) – 2,5 l  
REF [107TA7403](#) – 400 ml  
(spray)



**Black (satin)**  
REF [107TA7284](#) – 2,5 l  
REF [107TA9659](#) – 400 ml  
(spray)



**Red**  
REF [107TA7285](#) – 2,5 l  
REF [145TA1319](#) – 400 ml  
(spray)

## PAINT USED FOR BOLZONI



**Grey**  
REF [107TA7286](#) – 2,5 l



**Red**  
REF [122TA7458](#) – 2,5 l

Experience teaches us that the depicted colours on the printed page can never be 100% lifelike.



## PAINT AND ACCESSORIES

For all our latest catalogue updates and company info: [www.tvh.com](http://www.tvh.com)

**PAINT**

### PAINT USED FOR BOSS



**Yellow**  
REF [107TA7287](#) – 2,5 l  
REF [145TA1320](#) – 400 ml  
(spray)



**Black (satin)**  
REF [107TA7284](#) – 2,5 l  
REF [107TA9659](#) – 400 ml  
(spray)

### PAINT USED FOR BT



**Red**  
REF [107TA7288](#) – 2,5 l  
REF [105TA4648](#) – 400 ml  
(spray)

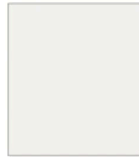


**Red/Orange**  
Since 2011  
REF [144TA9625](#) – 2,5 l  
REF [144TA9654](#) – 400 ml  
(spray)

### PAINT USED FOR BULMOR



**Blue**  
REF [145TA1783](#) – 2,5 l



**White**  
REF [145TA1784](#) – 2,5 l

### PAINT USED FOR CATERPILLAR



**Yellow**  
REF [107TA7290](#) – 2,5 l  
REF [145TA1321](#) – 400 ml  
(spray)



**Black (satin)**  
REF [107TA7284](#) – 2,5 l  
REF [107TA9659](#) – 400 ml  
(spray)

### PAINT USED FOR CESAB



**Green**  
REF [144TA9627](#) – 2,5 l



**Grey**  
REF [144TA9626](#) – 2,5 l

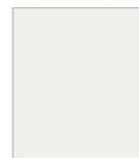
### PAINT USED FOR CLARK



**Yellow/Green**  
Since 1985  
REF [107TA7291](#) – 2,5 l  
REF [107TA7292](#) – 400 ml  
(spray)



**Black (satin)**  
Since 1985  
REF [107TA7284](#) – 2,5 l  
REF [107TA9659](#) – 400 ml  
(spray)



**White**  
REF [107TA7283](#) – 2,5 l  
REF [144TA9288](#) – 400 ml  
(spray)

### PAINT USED FOR CLIMAX



**Grey**  
REF [136TA1253](#) – 2,5 l  
REF [145TA1322](#) – 400 ml  
(spray)



**Red**  
REF [145TA1791](#) – 2,5 l  
REF [145TA1790](#) – 400 ml  
(spray)

Experience teaches us that the depicted colours on the printed page can never be 100% lifelike.

## PAINT AND ACCESSORIES



For all our latest catalogue updates and company info: [www.tvh.com](http://www.tvh.com)

PAINT

### PAINT USED FOR CROWN



**Beige**  
REF [107TA7293](#) – 2,5 l  
REF [136TA2951](#) – 400 ml  
(spray)



**Grey**  
REF [107TA7294](#) – 2,5 l

### PAINT USED FOR COMBILIFT



**Yellow**  
REF [145TA1781](#) – 2,5 l



**Grey**  
REF [145TA1782](#) – 2,5 l  
REF [145TA2583](#) – 400 ml  
(spray)

### PAINT USED FOR DATSUN



**Orange**  
REF [107TA7306](#) – 2,5 l



**Beige**  
REF [107TA7307](#) – 2,5 l

### PAINT USED FOR DESTA



**Red**  
REF [107TA7308](#) – 2,5 l



**Black (satin)**  
REF [107TA7284](#) – 2,5 l  
REF [107TA9659](#) – 400 ml  
(spray)

### PAINT USED FOR DINO LIFT



**White**  
REF [136TA1254](#) – 2,5 l

Experience teaches us that the depicted colours on the printed page can never be 100% lifelike.



## PAINT AND ACCESSORIES

For all our latest catalogue updates and company info: [www.tvh.com](http://www.tvh.com)

**PAINT**

### PAINT USED FOR DOOSAN



**Yellow**  
Since 1995  
**REF 107TA7298** – 2,5 l  
**REF 145TA1324** – 400 ml  
(spray)



**Yellow**  
Since 1998  
**REF 145TA1326** – 400 ml  
(spray)



**Yellow**  
Since 2000  
**REF 107TA7301** – 2,5 l  
**REF 107TA7302** – 400 ml  
(spray)



**Grey (dark)**  
Since 2005  
**REF 123TA5550** – 2,5 l  
**REF 144TA9655** – 400 ml  
(spray)



**Black (satin)**  
Since 1995  
**REF 107TA7284** – 2,5 l  
**REF 107TA9659** – 400 ml  
(spray)

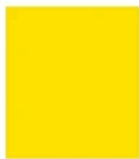


**Red**  
Reachtruck 1998  
**REF 107TA7303** – 2,5 l



**Orange**  
**REF 136TA1255** – 2,5 l  
**REF 136TA2960** – 400 ml  
(spray)

### PAINT USED FOR ECOLIFT



**Yellow**  
**REF 144TA9290** – 2,5 l  
**REF 145TA1323** – 400 ml  
(spray)

### PAINT USED FOR EP FORKLIFT



**Red**  
**REF 145TA2593** – 2,5 l



**Yellow**  
**REF 145TA2594** – 2,5 l

### PAINT USED FOR EUROLIFTER



**Orange**  
**REF 107TA7309** – 2,5 l  
**REF 145TA1329** – 400 ml  
(spray)

### PAINT USED FOR FANTUZZI



**Red**  
**REF 107TA7358** – 2,5 l  
**REF 145TA1327** – 400 ml  
(spray)



**White**  
**REF 136TA1279** – 2,5 l  
**REF 145TA1328** – 400 ml  
(spray)

Experience teaches us that the depicted colours on the printed page can never be 100% lifelike.

## PAINT AND ACCESSORIES



For all our latest catalogue updates and company info: [www.tvh.com](http://www.tvh.com)

PAINT

### PAINT USED FOR FENWICK



**Yellow**  
REF [107TA7310](#) – 2,5 l  
REF [145TA1330](#) – 400 ml  
(spray)



**Black (satin)**  
REF [107TA7284](#) – 2,5 l  
REF [107TA9659](#) – 400 ml  
(spray)



**Red**  
REF [105TA4862](#) – 2,5 l  
REF [105TA4649](#) – 400 ml  
(spray)



**Grey**  
REF [107TA7312](#) – 2,5 l

### PAINT USED FOR FIAT-OM – PIMESPO



**Beige (light)**  
REF [123TA1989](#) – 2,5 l



**Grey (dark)**  
REF [107TA7314](#) – 2,5 l



**Grey (light)**  
REF [107TA7313](#) – 2,5 l



**Grey**  
REF [107TA7312](#) – 2,5 l  
REF [107TA7341](#) – 400 ml  
(spray)



**Yellow**  
REF [107TA7332](#) – 2,5 l  
REF [145TA1331](#) – 400 ml  
(spray)

### PAINT USED FOR GENIE



**Blue**  
REF [107TA7315](#) – 2,5 l  
REF [128TA3430](#) – 400 ml  
(spray)



**Grey**  
REF [107TA7316](#) – 2,5 l  
REF [128TA3431](#) – 400 ml  
(spray)

### PAINT USED FOR GROVE



**Yellow**  
REF [136TA1257](#) – 2,5 l

Experience teaches us that the depicted colours on the printed page can never be 100% lifelike.



## PAINT AND ACCESSORIES

For all our latest catalogue updates and company info: [www.tvh.com](http://www.tvh.com)

PAINT

### PAINT USED FOR HAKO



**Red**  
REF [144TA9628](#) – 2,5 l  
REF [145TA1775](#) – 400 ml  
(spray)



**Grey**  
REF [144TA9629](#) – 2,5 l  
REF [145TA1824](#) – 400 ml  
(spray)



**Grey**  
REF [144TA9630](#) – 2,5 l



**White alu**  
REF [144TA9631](#) – 2,5 l  
REF [145TA1825](#) – 400 ml  
(spray)



**Black**  
REF [144TA9632](#) – 2,5 l



**White**  
REF [144TA9633](#) – 2,5 l  
REF [144TA9656](#) – 400 ml  
(spray)

### PAINT USED FOR HALLA – HYUNDAI



**Yellow**  
Since 1995  
REF [107TA7317](#) – 2,5 l



**Grey**  
Since 1999  
REF [107TA7318](#) – 2,5 l



**Orange**  
Since 1999  
REF [107TA7320](#) – 2,5 l

### PAINT USED FOR HAULOTTE



**Yellow**  
REF [122TA8932](#) – 2,5 l  
REF [145TA1331](#) – 400 ml  
(spray)



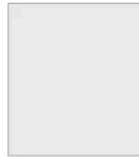
**White**  
REF [136TA2993](#) – 2,5 l  
REF [136TA1258](#) – 400 ml  
(spray)



**Black (satin)**  
REF [107TA7284](#) – 2,5 l  
REF [136TA1260](#) – 400 ml  
(spray)



**Red**  
REF [136TA2994](#) – 2,5 l  
REF [136TA1261](#) – 400 ml  
(spray)



**Grey Counterweight**  
REF [136TA2995](#) – 2,5 l  
REF [136TA1262](#) – 400 ml  
(spray)



**Grey Frame**  
REF [136TA1253](#) – 2,5 l  
REF [136TA1263](#) – 400 ml  
(spray)

### PAINT USED FOR HANGCHA



**Red**  
REF [144TA9634](#) – 2,5 l



**Yellow**  
REF [140TA8262](#) – 2,5 l

Experience teaches us that the depicted colours on the printed page can never be 100% lifelike.

# PAINT AND ACCESSORIES



For all our latest catalogue updates and company info: [www.tvh.com](http://www.tvh.com)

PAINT

### PAINT USED FOR HELI

 <p><b>Orange</b> Used in H2000 Series <b>REF <a href="#">144TA9635</a></b> – 2,5 l <b>REF <a href="#">145TA1773</a></b> – 400 ml (spray)</p>	 <p><b>Grey</b> Used in H2000 Series <b>REF <a href="#">144TA9636</a></b> – 2,5 l</p>	 <p><b>Red</b> Used in Green Series <b>REF <a href="#">145TA1771</a></b> – 2,5 l <b>REF <a href="#">145TA1772</a></b> – 400 ml (spray)</p>
 <p><b>Blue</b> Used in Green Series <b>REF <a href="#">145TA1774</a></b> – 2,5 l <b>REF <a href="#">145TA2584</a></b> – 400 ml (spray)</p>		

### PAINT USED FOR HITACHI

 <p><b>Orange</b> <b>REF <a href="#">136TA1264</a></b> – 2,5 l</p>		
---	--	--

### PAINT USED FOR HUBTEX

 <p><b>Yellow</b> <b>REF <a href="#">145TA1786</a></b> – 2,5 l <b>REF <a href="#">145TA2585</a></b> – 400 ml (spray)</p>	 <p><b>Light grey</b> <b>REF <a href="#">145TA1788</a></b> – 2,5 l</p>	 <p><b>Dark grey</b> <b>REF <a href="#">145TA1789</a></b> – 2,5 l <b>REF <a href="#">145TA2586</a></b> – 400 ml (spray)</p>
 <p><b>Dark grey</b> <b>REF <a href="#">107TA7312</a></b> – 2,5 l</p>		

### PAINT USED FOR HYSTER

 <p><b>Yellow</b> Before 1993 <b>REF <a href="#">107TA7321</a></b> – 2,5 l <b>REF <a href="#">111TA4071</a></b> – 400 ml (spray)</p>	 <p><b>Yellow</b> Since 1993 <b>REF <a href="#">107TA7322</a></b> – 2,5 l <b>REF <a href="#">111TA4072</a></b> – 400 ml (spray)</p>	 <p><b>Black (satin)</b> <b>REF <a href="#">107TA7284</a></b> – 2,5 l <b>REF <a href="#">107TA9659</a></b> – 400 ml (spray)</p>
 <p><b>Red</b> <b>REF <a href="#">107TA7285</a></b> – 2,5 l <b>REF <a href="#">111TA4073</a></b> – 400 ml (spray)</p>	 <p><b>Yellow</b> 2004 Challenger <b>REF <a href="#">122TA7467</a></b> – 2,5 l</p>	

Experience teaches us that the depicted colours on the printed page can never be 100% lifelike.



## PAINT AND ACCESSORIES

For all our latest catalogue updates and company info: [www.tvh.com](http://www.tvh.com)

PAINT

### PAINT USED FOR ICEM



**Yellow**  
Since 1998  
**REF [107TA7323](#)** – 2,5 l  
**REF [145TA1332](#)** – 400 ml  
(spray)



**Red**  
Since 1998  
**REF [107TA7324](#)** – 2,5 l



**Yellow**  
Since 2002  
**REF [107TA7310](#)** – 2,5 l  
**REF [145TA1333](#)** – 400 ml  
(spray)



**Green**  
Since 2002  
**REF [111TA4074](#)** – 2,5 l

### PAINT USED FOR IRION



**Red**  
**REF [122TA7471](#)** – 2,5 l  
**REF [145TA1334](#)** – 400 ml  
(spray)



**Grey (dark)**  
**REF [122TA7472](#)** – 2,5 l



**Grey (light)**  
**REF [122TA7473](#)** – 2,5 l  
**REF [145TA1335](#)** – 400 ml  
(spray)

### PAINT USED FOR IVECO



**Yellow**  
**REF [136TA1265](#)** – 2,5 l  
**REF [145TA2587](#)** – 400 ml  
(spray)

### PAINT USED FOR JCB



**Yellow**  
Brillant  
**REF [141TA7736](#)** – 2,5 l

### PAINT USED FOR JLG



**Orange**  
**REF [107TA7325](#)** – 2,5 l  
**REF [126TA5945](#)** – 400 ml  
(spray)



**Beige**  
**REF [107TA7326](#)** – 2,5 l  
**REF [126TA5946](#)** – 400 ml  
(spray)



**Grey**  
**REF [144TA9456](#)** – 2,5 l  
**REF [144TA9657](#)** – 400 ml  
(spray)

Experience teaches us that the depicted colours on the printed page can never be 100% lifelike.



# PAINT AND ACCESSORIES



For all our latest catalogue updates and company info: [www.tvh.com](http://www.tvh.com)

PAINT

### PAINT USED FOR JUNGHEINRICH

<p><b>Yellow</b> REF <a href="#">107TA7287</a> – 2,5 l REF <a href="#">107TA7327</a> – 400 ml (spray)</p>	<p><b>Yellow</b> REF <a href="#">136TA1282</a> – 2,5 l</p>	<p><b>Yellow</b> Reachtruck REF <a href="#">136TA1285</a> – 2,5 l</p>
<p><b>Grey</b> REF <a href="#">122TA7463</a> – 2,5 l</p>	<p><b>Black (satin)</b> REF <a href="#">107TA7284</a> – 2,5 l REF <a href="#">107TA9659</a> – 400 ml (spray)</p>	

### PAINT USED FOR KALMAR

<p><b>Beige</b> REF <a href="#">107TA7328</a> – 2,5 l</p>	<p><b>Red</b> REF <a href="#">107TA7329</a> – 2,5 l</p>
---	---

### PAINT USED FOR KOMATSU

<p><b>Blue</b> Since 1988 REF <a href="#">107TA7333</a> – 2,5 l REF <a href="#">136TA2963</a> – 400 ml (spray)</p>	<p><b>Blue</b> 1997 REF <a href="#">107TA7334</a> – 2,5 l REF <a href="#">136TA2964</a> – 400 ml (spray)</p>	<p><b>Grey</b> Since 1988 REF <a href="#">107TA7335</a> – 2,5 l</p>
<p><b>Yellow</b> Before 1988 REF <a href="#">107TA7336</a> – 2,5 l</p>	<p><b>Citron yellow</b> Before 1997 REF <a href="#">107TA7337</a> – 2,5 l</p>	<p><b>Black (satin)</b> REF <a href="#">107TA7284</a> – 2,5 l REF <a href="#">107TA9659</a> – 400 ml (spray)</p>
<p><b>Turquoise</b> REF <a href="#">107TA7338</a> – 2,5 l REF <a href="#">136TA2965</a> – 400 ml (spray)</p>	<p><b>Yellow</b> 2001 – Leo / Leo-plus REF <a href="#">111TA4075</a> – 2,5 l REF <a href="#">136TA2967</a> – 400 ml (spray)</p>	<p><b>Yellow</b> 2001 Leo-NXT / Leo-NXT-V REF <a href="#">136TA1267</a> – 2,5 l</p>
<p><b>Grey</b> REF <a href="#">136TA1268</a> – 2,5 l</p>	<p><b>Purple</b> REF <a href="#">136TA1269</a> – 2,5 l</p>	<p><b>Grey (matt)</b> Leo-NXT / Leo-NXT-V REF <a href="#">136TA1270</a> – 2,5 l</p>
<p><b>Green</b> REF <a href="#">136TA1284</a> – 2,5 l</p>		

Experience teaches us that the depicted colours on the printed page can never be 100% lifelike.



## PAINT AND ACCESSORIES

For all our latest catalogue updates and company info: [www.tvh.com](http://www.tvh.com)

**PAINT**

### PAINT USED FOR KINGLIFT (LIFTER/PRAMAC)



**Yellow**  
REF [107TA7332](#) – 2,5 l  
REF [145TA1336](#) – 400 ml  
(spray)



**Green**  
REF [107TA7331](#) – 2,5 l

### PAINT USED FOR LAFIS



**Red**  
REF [122TA7469](#) – 2,5 l  
REF [145TA1337](#) – 400 ml  
(spray)



**Grey (matt)**  
REF [136TA1271](#) – 2,5 l

### PAINT USED FOR LANSING



**Grey**  
REF [107TA7312](#) – 2,5 l  
REF [144TA9457](#) – 400 ml  
(spray)



**Red/Orange**  
REF [105TA4862](#) – 2,5 l  
REF [145TA1338](#) – 400 ml  
(spray)

### PAINT USED FOR LINDE



**Grey**  
Before 1979  
REF [107TA7339](#) – 2,5 l



**Red**  
Before 1979  
REF [107TA7285](#) – 2,5 l  
REF [145TA1340](#) – 400 ml  
(spray)



**Red/Orange**  
Since 1979  
REF [105TA4862](#) – 2,5 l  
REF [107TA7342](#) – 400 ml  
(spray)



**Black/Grey**  
Since 1979  
REF [107TA7312](#) – 2,5 l  
REF [144TA9551](#) – 400 ml  
(spray)

### PAINT USED FOR MANITOU



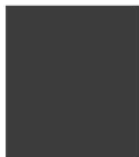
**Beige**  
REF [107TA7344](#) – 2,5 l  
REF [136TA2968](#) – 400 ml  
(spray)



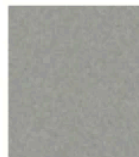
**Brown**  
Since 1998  
REF [107TA7345](#) – 2,5 l  
REF [136TA2969](#) – 400 ml  
(spray)



**Red**  
REF [107TA7329](#) – 2,5 l  
REF [136TA2962](#) – 400 ml  
(spray)



**Brown**  
Mani scopic  
REF [111TA4076](#) – 2,5 l



**Grey (metallic)**  
REF [136TA1272](#) – 2,5 l  
REF [136TA2970](#) – 400 ml  
(spray)



**Yellow**  
REF [144TA9621](#) – 2,5 l  
REF [145TA1339](#) – 400 ml  
(spray)

Experience teaches us that the depicted colours on the printed page can never be 100% lifelike.

# PAINT AND ACCESSORIES



For all our latest catalogue updates and company info: [www.tvh.com](http://www.tvh.com)

PAINT

## PAINT USED FOR MERLO



**Green**  
REF [136TA1297](#) – 2,5 l

## PAINT USED FOR MIC



**Orange**  
Since 1998  
REF [107TA7346](#) – 2,5 l



**Grey**  
Since 1998  
REF [107TA7347](#) – 2,5 l



**Yellow**  
REF [107TA7310](#) – 2,5 l  
REF [145TA1341](#) – 400 ml  
(spray)



**Black (satin)**  
REF [107TA7284](#) – 2,5 l  
REF [107TA9659](#) – 400 ml  
(spray)

## PAINT USED FOR MITSUBISHI



**Yellow**  
Up to 1985  
REF [107TA7336](#) – 2,5 l



**Black (satin)**  
Before 1985  
REF [107TA7284](#) – 2,5 l  
REF [107TA9659](#) – 400 ml  
(spray)



**Yellow/Green**  
1985-1990  
REF [107TA7348](#) – 2,5 l



**Brown**  
1985-1990  
REF [107TA7349](#) – 2,5 l  
REF [145TA1558](#) – 400 ml  
(spray)



**Green**  
1990 – CAP series +  
K series  
REF [107TA7350](#) – 2,5 l  
REF [136TA2971](#) – 400 ml  
(spray)



**Grey**  
Since 2003  
Grendia series  
REF [144TA9638](#) – 2,5 l



**Beige**  
Before 1997  
Engine-hood  
REF [107TA7351](#) – 2,5 l



**Purple**  
Since 1997  
Engine-hood  
REF [107TA7352](#) – 2,5 l



**Yellow**  
1998  
REF [111TA4077](#) – 2,5 l  
REF [145TA1342](#) – 400 ml  
(spray)



**Green**  
Since 2003  
Grendia series  
REF [136TA1273](#) – 2,5 l

Experience teaches us that the depicted colours on the printed page can never be 100% lifelike.



## PAINT AND ACCESSORIES

For all our latest catalogue updates and company info: [www.tvh.com](http://www.tvh.com)

**PAINT**

### PAINT USED FOR NICHYU



**Grey**  
REF [107TA7353](#) – 2,5 l



**Pink**  
REF [107TA7354](#) – 2,5 l

### PAINT USED FOR NIFTY



**Green**  
REF [122TA8931](#) – 2,5 l

### PAINT USED FOR NISSAN



**Grey**  
Since 1993  
REF [107TA7304](#) – 2,5 l



**Pink**  
Since 1993 – JO1/JO2  
REF [107TA7305](#) – 2,5 l



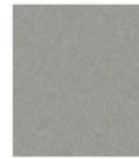
**Orange**  
F01/F02/H01/H02/D01/  
D02/N01  
(Old M01/M02)  
REF [107TA7306](#) – 2,5 l



**Beige**  
F01/F02/H01/H02/D01/  
D02/N01  
(Old M01/M02)  
REF [107TA7307](#) – 2,5 l



**Grey**  
Since 2001  
REF [111TA4078](#) – 2,5 l



**Grey (metallic)**  
L01/L02/1F1/1F2  
REF [122TA7474](#) – 2,5 l  
NO1 (NEW)  
REF [145TA1343](#) – 400 ml  
(spray)

### PAINT USED FOR NUOVA DETAS



**Yellow**  
REF [138TA7510](#) – 2,5 l  
REF [145TA2588](#) – 400 ml  
(spray)



**Grey**  
REF [145TA1776](#) – 2,5 l  
REF [145TA2589](#) – 400 ml  
(spray)



**Black**  
REF [140TA2194](#) – 2,5 l

### PAINT USED FOR NYK



**Red**  
Since 1988  
REF [107TA7324](#) – 2,5 l



**Grey**  
Since 1988  
REF [107TA7355](#) – 2,5 l  
REF [145TA1344](#) – 400 ml  
(spray)

### PAINT USED FOR OMG



**Orange**  
REF [107TA7356](#) – 2,5 l  
REF [144TA9658](#) – 400 ml  
(spray)

Experience teaches us that the depicted colours on the printed page can never be 100% lifelike.

# PAINT AND ACCESSORIES



PAINT

For all our latest catalogue updates and company info: [www.tvh.com](http://www.tvh.com)

## PAINT USED FOR PATRIA



**Green**  
REF [107TA7357](#) – 2,5 l



**Black (satin)**  
REF [107TA7284](#) – 2,5 l  
REF [107TA9659](#) – 400 ml  
(spray)

## PAINT USED FOR PRAMAC



**Green**  
REF [123TA5551](#) – 2,5 l  
REF [136TA2974](#) – 400 ml  
(spray)



**Black (satin)**  
REF [107TA7284](#) – 2,5 l  
REF [107TA9659](#) – 400 ml  
(spray)

## PAINT USED FOR PRAT



**Red**  
REF [107TA7358](#) – 2,5 l

## PAINT USED FOR SAMSUNG



**Yellow**  
REF [107TA7359](#) – 2,5 l  
REF [145TA1346](#) – 400 ml  
(spray)



**Brown**  
REF [107TA7360](#) – 2,5 l  
REF [136TA1296](#) – 400 ml  
(spray)

## PAINT USED FOR SHINKO



**Grey (light)**  
REF [107TA7364](#) – 2,5 l



**Green**  
REF [107TA7365](#) – 2,5 l  
REF [145TA1345](#) – 400 ml  
(spray)



**White**  
REF [107TA7307](#) – 2,5 l

## PAINT USED FOR SKYJACK



**Orange / Red**  
REF [145TA1777](#) – 2,5 l

## PAINT USED FOR SMARTSWEEP



**Yellow**  
REF [136TA1274](#) – 2,5 l



**Grey**  
REF [136TA1275](#) – 2,5 l

Experience teaches us that the depicted colours on the printed page can never be 100% lifelike.

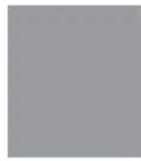


## PAINT AND ACCESSORIES

For all our latest catalogue updates and company info: [www.tvh.com](http://www.tvh.com)

**PAINT**

### PAINT USED FOR SMV KONECRANES



**Grey (light)**  
REF [122TA7473](#) – 2,5 l  
REF [145TA2590](#) – 400 ml  
(spray)



**Grey**  
REF [107TA7355](#) – 2,5 l  
REF [145TA2591](#) – 400 ml  
(spray)



**Blue**  
REF [144TA9639](#) – 2,5 l

### PAINT USED FOR STEINBOCK



**Yellow**  
REF [107TA7287](#) – 2,5 l  
REF [145TA1347](#) – 400 ml  
(spray)



**Black (satin)**  
REF [107TA7284](#) – 2,5 l  
REF [107TA9659](#) – 400 ml  
(spray)



**Orange**  
REF [144TA9642](#) – 2,5 l

### PAINT USED FOR STILL



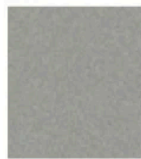
**Orange**  
REF [107TA7366](#) – 2,5 l  
REF [116TA4428](#) – 400 ml  
(spray)



**Black (satin)**  
REF [107TA7284](#) – 2,5 l  
REF [107TA9659](#) – 400 ml  
(spray)



**Grey**  
REF [111TA4079](#) – 2,5 l  
REF [145TA1348](#) – 400 ml  
(spray)



**Silver metallic**  
REF [144TA9643](#) – 2,5 l  
REF [145TA8546](#) – 400 ml  
(spray)

### PAINT USED FOR SUMITOMO



**Turquoise**  
REF [107TA7367](#) – 2,5 l



**Black (satin)**  
REF [107TA7284](#) – 2,5 l  
REF [107TA9659](#) – 400 ml  
(spray)

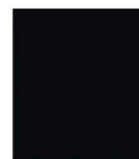
### PAINT USED FOR SVETRUCK



**Red**  
REF [107TA7343](#) – 2,5 l  
REF [145TA1349](#) – 400 ml  
(spray)



**White**  
REF [107TA7283](#) – 2,5 l  
REF [145TA1350](#) – 400 ml  
(spray)



**Black (satin)**  
REF [107TA7284](#) – 2,5 l  
REF [107TA9659](#) – 400 ml  
(spray)

Experience teaches us that the depicted colours on the printed page can never be 100% lifelike.

# PAINT AND ACCESSORIES



For all our latest catalogue updates and company info: [www.tvh.com](http://www.tvh.com)

PAINT

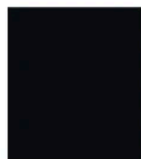
## PAINT USED FOR TCM



**Yellow**  
Before 1991  
**REF 107TA7368** – 2,5 l



**Yellow**  
2004, Inoma Series  
FB-7/FTB-7/FRB-8/FD35-50T2/FD60-100-2  
**REF 122TA9112** – 2,5 l  
**REF 136TA1277** – 400 ml (spray)



**Black (satin)**  
**REF 107TA7284** – 2,5 l  
**REF 107TA9659** – 400 ml (spray)



**Red**  
**REF 107TA7343** – 2,5 l  
**REF 145TA1351** – 400 ml (spray)



**Yellow**  
Since 1991-1995  
Alpha Series  
**REF 107TA9657** – 2,5 l



**Grey**  
Since 1995  
**REF 107TA9658** – 2,5 l



**White**  
Alpha series/J series/F(H) B-H5  
**REF 136TA1279** – 2,5 l  
**REF 145TA1352** – 400 ml (spray)



**Black/grey**  
**REF 107TA7312** – 2,5 l  
**REF 136TA1278** – 400 ml (spray)



**Yellow**  
Since 1995, J series/  
700 series/F(H)B-6/FDG35-50T9/FD60-100-9/FTB-E  
**REF 107TA7370** – 2,5 l  
**REF 136TA1276** – 400 ml (spray)



**White aluminium**  
**REF 122TA7475** – 2,5 l  
**REF 145TA1353** – 400 ml (spray)



**Blue**  
**REF 136TA1280** – 2,5 l



**White**  
Inoma series  
**REF 144TA9644** – 2,5 l  
**REF 144TA9659** – 400 ml (spray)

## PAINT USED FOR TEREX



**Beige**  
**REF 111TA4080** – 2,5 l



**Grey**  
**REF 111TA4081** – 2,5 l

## PAINT USED FOR TOTALLIFTER



**Yellow**  
**REF 136TA1346** – 2,5 l  
**REF 145TA1792** – 400 ml (spray)



**Green**  
**REF 107TA7291** – 2,5 l  
**REF 145TA1826** – 400 ml (spray)



**Black**  
**REF 107TA7284** – 2,5 l  
**REF 107TA9659** – 400 ml (spray)



**Red**  
**REF 145TA1793** – 2,5 l  
**REF 145TA1794** – 400 ml (spray)



**Orange**  
**REF 145TA1795** – 2,5 l  
**REF 145TA1796** – 400 ml (spray)

Experience teaches us that the depicted colours on the printed page can never be 100% lifelike.





## PAINT AND ACCESSORIES

For all our latest catalogue updates and company info: [www.tvh.com](http://www.tvh.com)

PAINT

### PAINT USED FOR TOYOTA



**Yellow**  
Before 1980  
**REF 107TA7372** – 2,5 l



**Orange**  
Serie 6, 7 & 8 Europe  
**REF 107TA7376** – 2,5 l  
**REF 136TA2976** – 400 ml  
(spray)



**Black (satin)**  
Before 1980 – Serie 3 & 4  
**REF 107TA7284** – 2,5 l  
**REF 107TA9659** – 400 ml  
(spray)



**Orange**  
Serie 3, 4 & 5  
**REF 107TA7374** – 2,5 l  
**REF 136TA2977** – 400 ml  
(spray)



**Orange**  
Serie 7 Japan  
**REF 107TA7377** – 2,5 l



**Blue**  
Serie 5  
**REF 107TA7373** – 2,5 l  
**REF 136TA2978** – 400 ml  
(spray)



**Grey**  
Serie 7 & 8 Europe  
**REF 107TA7375** – 2,5 l  
**REF 145TA1556** – 400 ml  
(spray)



**Blue**  
Serie 7 Japan  
**REF 107TA7378** – 2,5 l

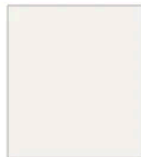


**Beige**  
Serie 7 Japan  
**REF 136TA1281** – 2,5 l



**Blue**  
Serie 6 (engine hood)  
**REF 144TA9646** – 2,5 l

### PAINT USED FOR UNICARRIERS



**White**  
**REF 144TA9647** – 2,5 l



**Grey**  
**REF 145TA8292** – 2,5 l



**Black (satin)**  
**REF 107TA7284** – 2,5 l  
**REF 107TA9659** – 400 ml  
(spray)

### PAINT USED FOR UPRIGHT



**Blue**  
**REF 122TA7468** – 2,5 l  
**REF 144TA9660** – 400 ml  
(spray)

### PAINT USED FOR BV VESTERGAARD



**Orange**  
**REF 107TA7289** – 2,5 l

Experience teaches us that the depicted colours on the printed page can never be 100% lifelike.



## PAINT AND ACCESSORIES



For all our latest catalogue updates and company info: [www.tvh.com](http://www.tvh.com)

PAINT

### PAINT USED FOR VOLVO



**Yellow brillant**  
REF [144TA9648](#) – 2,5 l

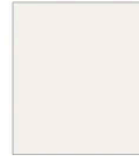
### PAINT USED FOR YALE



**Yellow**  
REF [107TA7381](#) – 2,5 l  
REF [144TA9661](#) – 400 ml  
(spray)



**Black (satin)**  
REF [107TA7284](#) – 2,5 l  
REF [107TA9659](#) – 400 ml  
(spray)



**White**  
REF [145TA1769](#) – 1 l

### PAINT USED FOR YANG-YAM



**Orange**  
REF [107TA7366](#) – 2,5 l  
REF [145TA1557](#) – 400 ml  
(spray)



**Green**  
REF [107TA7384](#) – 2,5 l

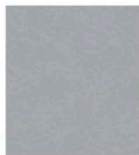


**Yellow**  
REF [107TA7385](#) – 2,5 l



**Blue**  
REF [107TA7383](#) – 2,5 l

### HEAT RESISTANT ALUMINIUM SPECIAL



**Aluminium special**  
REF [107TA7395](#) – 2,5 l  
REF [144TA9725](#) – 400 ml  
(spray)

Experience teaches us that the depicted colours on the printed page can never be 100% lifelike.